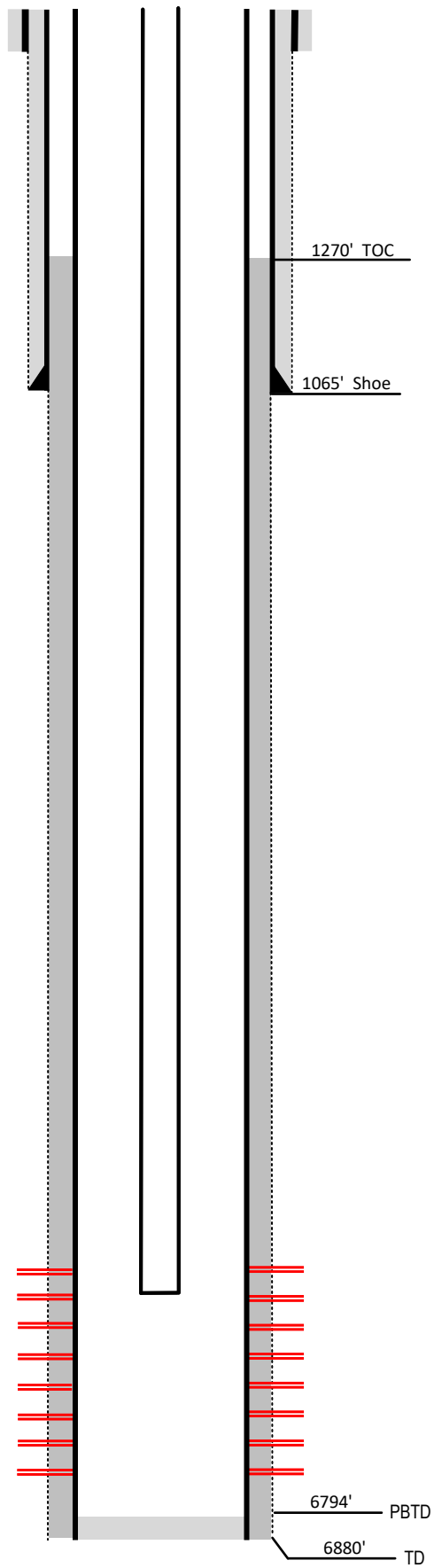


Laramie Energy

Current Wellbore Diagram
Not to scale

FEDERAL WELL: YES NO

Geological Tops Depth (MD)



Well Name Cascade Creek 697-20-11D
API 05-045-13040-00
Surface Location NENW Sec 20 T6S R97W 6 P.M.
GPS Coordinates 39.512910, -108.246116
County, State Garfield County, Co
Diagram Date 4/3/2025

Hole	22" @ 60'
Conductor	16" @ 60'
Cement	Surface

Surface Hole	12.25" @ 1065'
Casing	9 5/8" 36# J-55 @ 1065'
Cement	289 sks
TOC	Surface

Production Hole	8.75" @ 6863'
Casing	4 1/2" 11.6# N-80 @ 6863'
Cement	1625 sks
TOC	1270'

Tubing	2 3/8" 4.7# J55 @ 6170'
---------------	-------------------------

Perforations	Top	Bottom
	5405'	6562'

Wasatch G 2581'

Fort Union 2707'

Mesaverde 3883'

Williams Fork 4103'

Cameo 6165'

Rollins 6603'

6794' PBTD

6880' TD