

Date:	March 2025
Designed By:	KPK
Drawn By:	DM



K.P. Kauffman Company, Inc.
1700 Lincoln St. Suite 4550
Denver CO, 80202

K.P. Kauffman Company, Inc.
McHale #2 Flowline
NESE, Section 26, Township 2 North, Range 67 West
Weld County, Colorado

Figure 1 - Topo Map



Date:	March 2025
Designed By:	KPK
Drawn By:	DM



K.P. Kauffman Company, Inc.
1700 Lincoln St. Suite 4550
Denver CO, 80202

K.P. Kauffman Company, Inc.
McHale #2 Flowline
NESE, Section 26, Township 2 North, Range 67 West
Weld County, Colorado

Figure 2 - Site Map



1:2,257
40.108 | -104.854

Maxar, Microsoft | U.S. Fish and Wildlife Service, National Standards and Support Team, wetlands_team@fws.gov | Esri Community Maps Con... **esri** POWERED BY

Date:	April 2025
Designed By:	KPK
Drawn By:	DM



K.P. Kauffman Company, Inc.
1700 Lincoln St. Suite 4550
Denver CO, 80202

K.P. Kauffman Company, Inc.
McHale #2 Flowline
NESE, Section 26, Township 2 North, Range 67 West
Weld County, Colorado

Figure 3 – National Wetland Inventory Map



Approximate location of flowline

Fence Line



Point of Release

Excavation

Flowline Location per ECMC GIS

Northern Edge of Emergent Wetland

Stockpile

51 ft

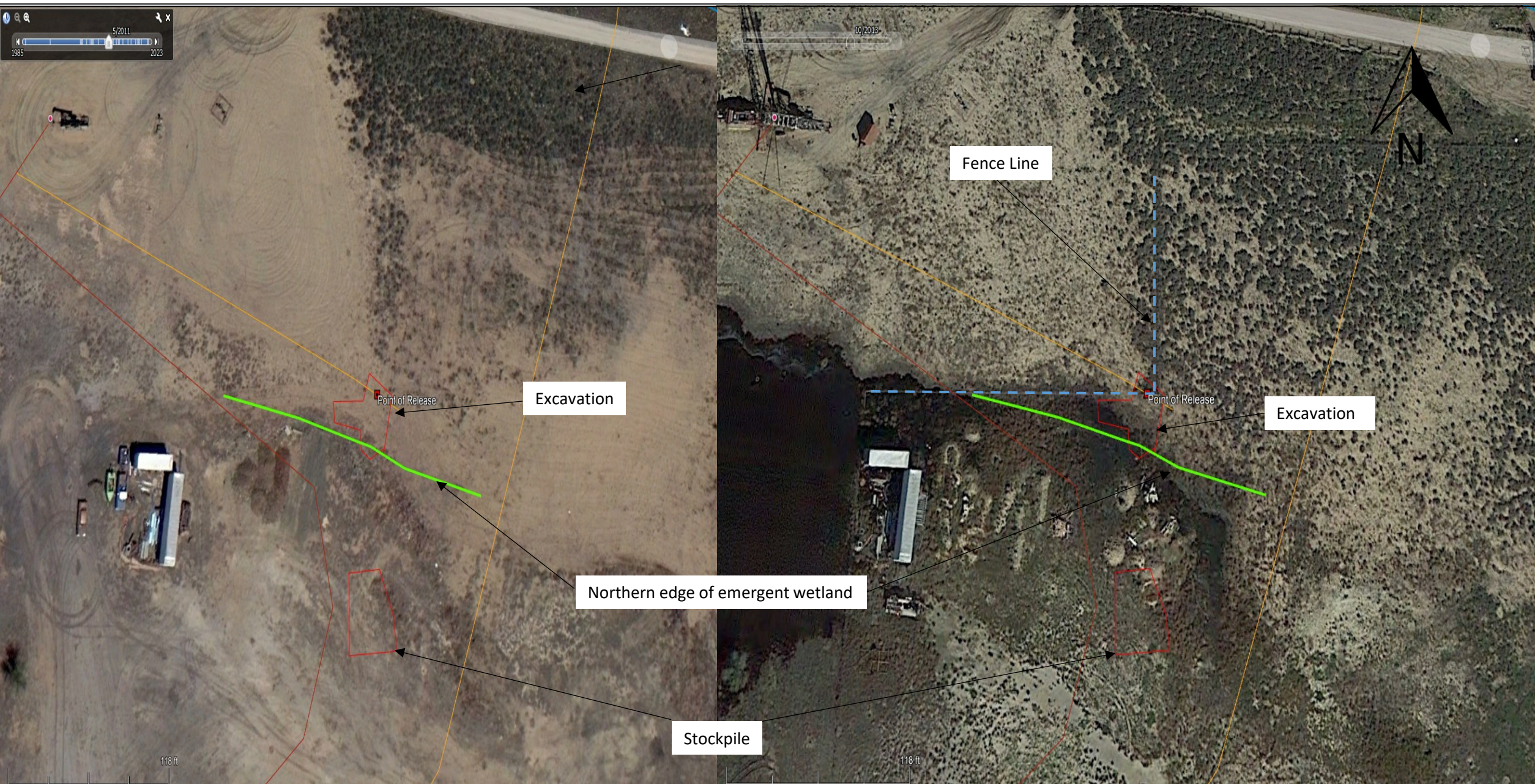
Date:	April 2025
Designed By:	KPK
Drawn By:	DM



K.P. Kauffman Company, Inc.
1700 Lincoln St. Suite 4550
Denver CO, 80202

K.P. Kauffman Company, Inc.
McHale #2 Flowline
NESE, Section 26, Township 2 North, Range 67 West
Weld County, Colorado

Figure 4 – Excavation Map



Date:	April 2025
Designed By:	KPK
Drawn By:	DM



K.P. Kauffman Company, Inc.
 1700 Lincoln St. Suite 4550
 Denver CO, 80202

K.P. Kauffman Company, Inc.
 McHale #2 Flowline
 NESE, Section 26, Township 2 North, Range 67 West
 Weld County, Colorado

Figure 3 – 2011 - 2013 Imagery