

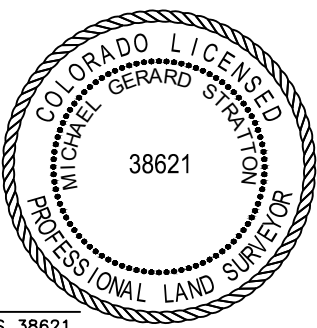
- NOTES:**
- DISTANCES ARE MEASURED PERPENDICULAR TO NEAREST SECTION LINE AND ARE SHOWN ON THE SAME SIDE OF THE SECTION LINE WHERE THE WELL IS LOCATED.
 - ALL LINEAL DISTANCES SHOWN USE THE U.S. FOOT; DEFINED AS 1 U.S. FOOT = 1200/3937 METERS.
 - THIS MAP DOES NOT REPRESENT A MONUMENTED BOUNDARY SURVEY. SIXTEENTH CORNER LOCATIONS ARE COMPUTED, UNLESS OTHERWISE NOTED.
 - BOTTOM HOLE LOCATIONS AND HORIZONTAL COMPLETION ZONE PROVIDED BY OTHERS.
 - ALL REBAR AND CAPS ARE MEASURED IN INCHES.
 - ELEVATIONS ARE BASED ON THE NORTH AMERICAN VERTICAL DATUM OF 1988 AS MEASURED BY GNSS OBSERVATIONS USING GEOID 18.

BASIS OF BEARING:
 THE EAST LINE OF THE SOUTHWEST QUARTER OF SECTION 28-T5N-R66W BEARS N00°04'23"W FOR A DISTANCE OF 2642.41' FEET BETWEEN THE SOUTH QUARTER CORNER OF SECTION 28 MONUMENTED BY A 2-1/4" PIPE WITH A 3-1/4" BRASS CAP STAMPED, "PLS 16415", AND AT THE CENTER QUARTER CORNER OF SECTION 28, MONUMENTED BY A 3/4" REBAR WITH A 3-1/4" ALUMINUM CAP STAMPED, "PLS 34995", BEING A GRID BEARING USING THE COLORADO STATE PLANE SYSTEM, NORTH ZONE, BASED ON THE NORTH AMERICAN DATUM OF 1983(2011).

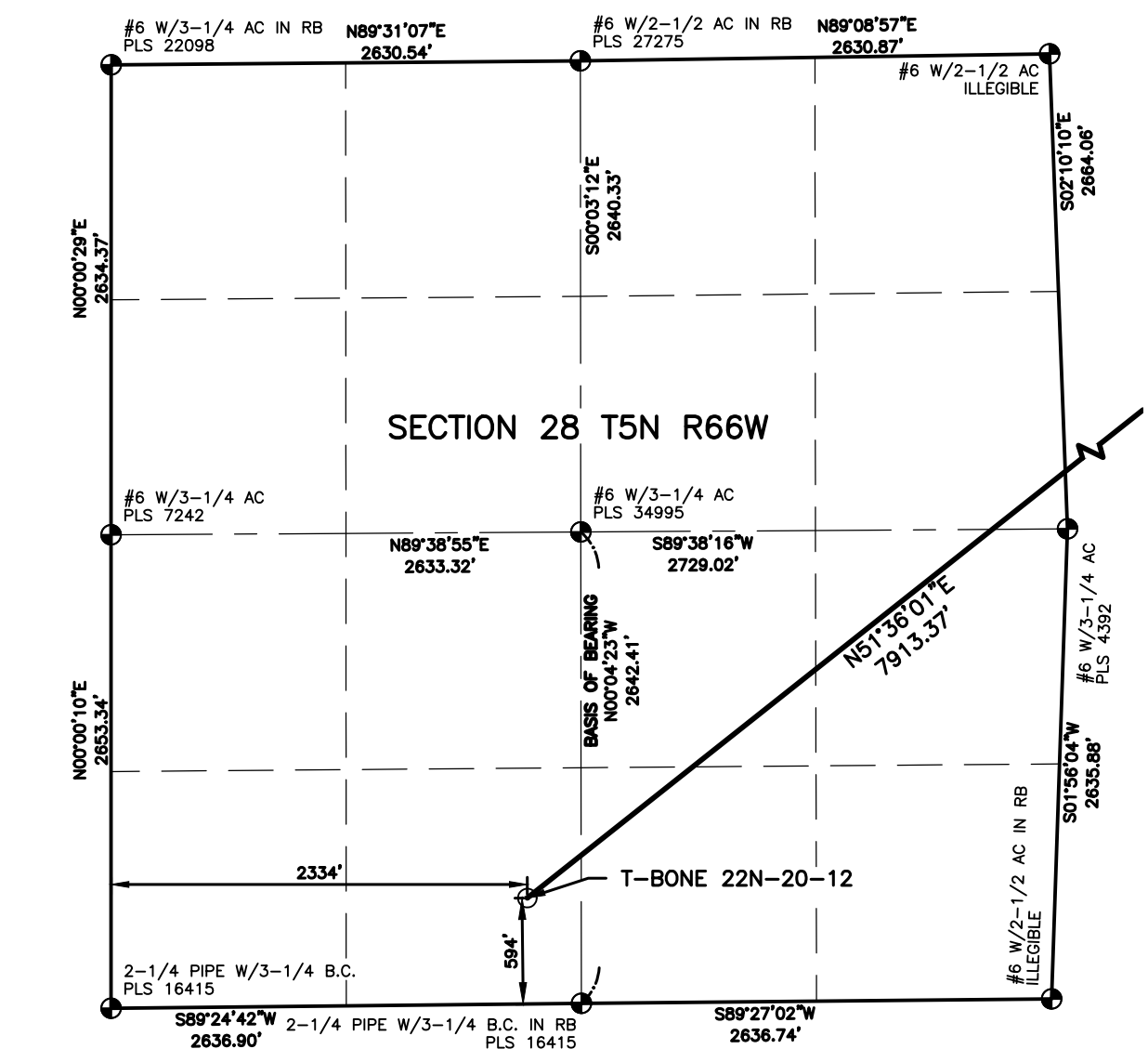
LEGEND

- ◆ COMPUTED ALIQUOT CORNER
- ⊙ PROPOSED WELL
- ⊕ ALIQUOT CORNER
- A.C. ALUMINUM CAP
- ⊖ BOTTOM HOLE
- R.B. RANGE BOX
- ⊙^{WC} ALIQUOT WITNESS CORNER
- CONC. CONCRETE
- △ LANDING POINT
- I.C.V.B. IRRIGATION CONTROL VALVE BOX

LAND SURVEYOR'S CERTIFICATION
 LAMP RYNEARSON, INC. OF FT. COLLINS, COLORADO HAS, IN ACCORDANCE WITH A REQUEST FROM KALEB ROUSH OF EXTRACTION OIL AND GAS, DETERMINED THE SURFACE LOCATION OF THE WELL DESIGNATED AS T-BONE 22N-20-12 TO BE 594' FROM THE SOUTH LINE AND 2334' FROM THE WEST LINE OF SECTION 28, TOWNSHIP 5 NORTH, RANGE 66 WEST OF THE 6TH P.M., WELD COUNTY, COLORADO.



MICHAEL GERARD STRATTON COLORADO PLS 38621
 DATE OF SURVEY: 10/22/2024 (SECTION CONTROL)
 DATE OF SURVEY: 12/18/2023 (WELL LOCATION)



SURFACE POINT				LANDING POINT/BEGIN HORIZONTAL COMPLETION ZONE				BOTTOM HOLE/END HORIZONTAL COMPLETION ZONE			
594'	FSL	2334'	FWL	160'	FSL	1976'	FEL	350'	FSL	1945'	FEL

SURFACE POINT				LANDING POINT		BOTTOM HOLE		
LATITUDE	LONGITUDE	ELEVATION	PDOP	OPERATOR	LATITUDE	LONGITUDE	LATITUDE	LONGITUDE
40.364889	-104.785716	4812	1.494	R.WARD	40.378238	-104.763321	40.407882	-104.763276

LAMP RYNEARSON
 LAMP RYNEARSON.COM

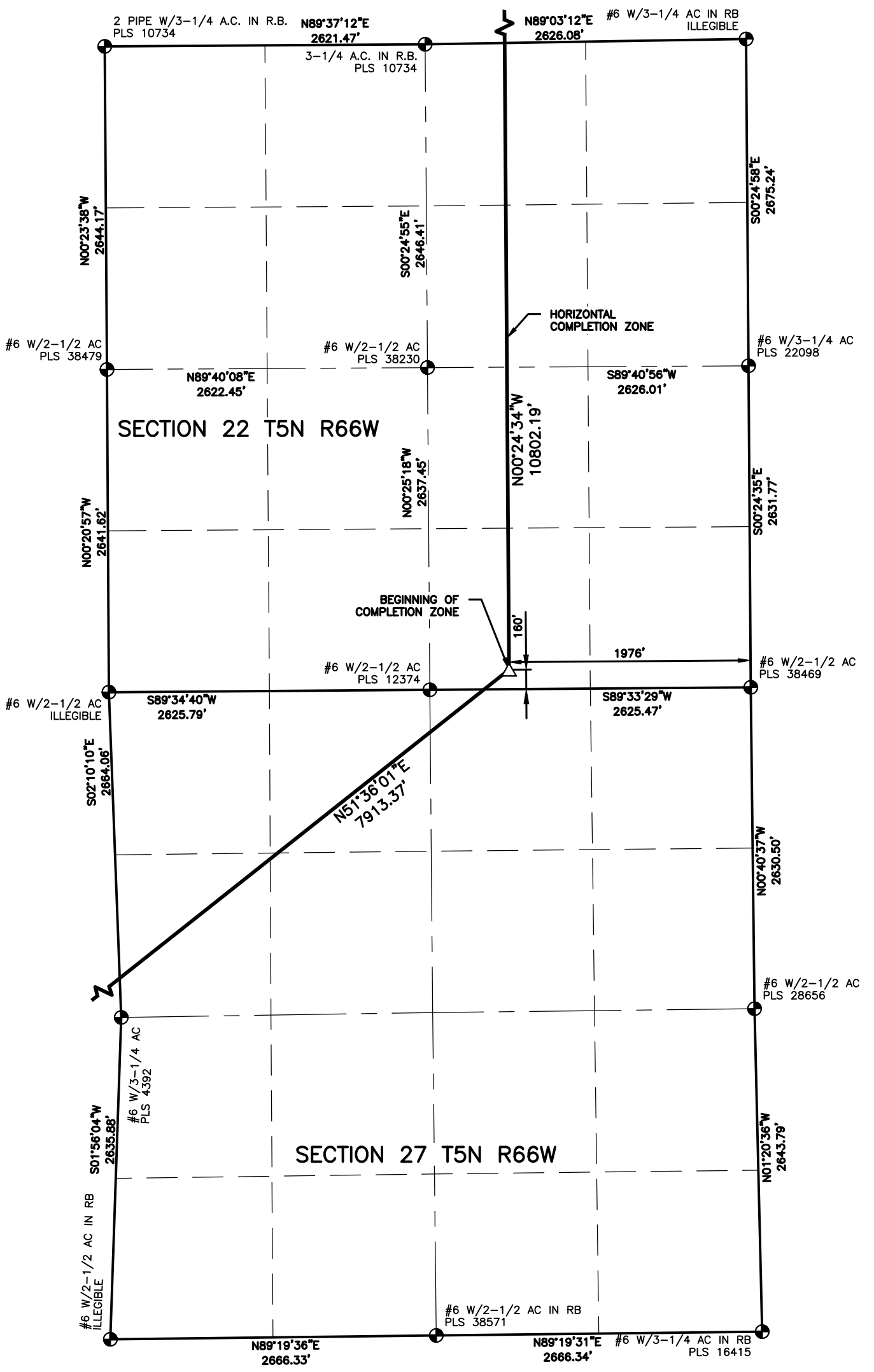
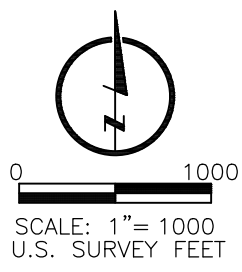
OMAHA, NEBRASKA
 14710 W. DODGE RD., STE. 100 (402)496-2498
 FORT COLLINS, COLORADO
 4715 PINEAVENUE DR., STE. 100 (970)228-0342
 KANSAS CITY, MISSOURI
 9001 STATE LINE RD., STE. 200 (816)361-0440

DESIGNER / DRAFTER
JOSH CROAK
 REVIEWER
MICHAEL STRATTON
 PROJECT NUMBER
0221023
 DATE
03/25/2025
 SURFACE LOCATION
SE4, SW4, S28, T5N, R66W
 BOOK AND PAGE

WELL LOCATION PLAT
 EXTRACTION OIL AND GAS
 T-BONE 22N-20-12



L:\Engineering\0221023\01_X06_T Bone II SURVEY\DRAWINGS\EXHIBITS\WELL PLATS\T-BONE 22N-20-12.dwg, 3/25/2025 2:21:37 PM, JOSHUA A. CROAK, LAMP RYNEARSON



- NOTES:**
1. DISTANCES ARE MEASURED PERPENDICULAR TO NEAREST SECTION LINE AND ARE SHOWN ON THE SAME SIDE OF THE SECTION LINE WHERE THE WELL IS LOCATED.
 2. ALL LINEAL DISTANCES SHOWN USE THE U.S. SURVEY FOOT; DEFINED AS 1 U.S. FOOT = 1200/3937 METERS.
 3. THIS MAP DOES NOT REPRESENT A MONUMENTED BOUNDARY SURVEY. SIXTEENTH CORNER LOCATIONS ARE COMPUTED, UNLESS OTHERWISE NOTED.
 4. BOTTOM HOLE LOCATIONS AND HORIZONTAL COMPLETION ZONE PROVIDED BY OTHERS.
 5. ALL REBAR AND CAPS ARE MEASURED IN INCHES.
 6. ELEVATIONS ARE BASED ON THE NORTH AMERICAN VERTICAL DATUM OF 1988 AS MEASURED BY GNSS OBSERVATIONS USING GEOID 18.

BASIS OF BEARING:
 THE EAST LINE OF THE SOUTHWEST QUARTER OF SECTION 28-T5N-R66W BEARS N00°04'23"W FOR A DISTANCE OF 2642.41' FEET BETWEEN THE SOUTH QUARTER CORNER OF SECTION 28 MONUMENTED BY A 2-1/4" PIPE WITH A 3-1/4" BRASS CAP STAMPED, "PLS 16415", AND AT THE CENTER QUARTER CORNER OF SECTION 28, MONUMENTED BY A 3/4" REBAR WITH A 3-1/4" ALUMINUM CAP STAMPED, "PLS 34995", BEING A GRID BEARING USING THE COLORADO STATE PLANE SYSTEM, NORTH ZONE, BASED ON THE NORTH AMERICAN DATUM OF 1983(2011).

LEGEND

◆	COMPUTED ALIQUOT CORNER	○	PROPOSED WELL
⊕	ALIQUOT CORNER	A.C.	ALUMINUM CAP
⊙	BOTTOM HOLE	R.B.	RANGE BOX
⊙ ^{WC}	ALIQUOT WITNESS CORNER	CONC.	CONCRETE
△	LANDING POINT	I.C.V.B.	IRRIGATION CONTROL VALVE BOX

LAND SURVEYOR'S CERTIFICATION
 LAMP RYNEARSON, INC. OF FT. COLLINS, COLORADO HAS, IN ACCORDANCE WITH A REQUEST FROM KALEB ROUSH OF EXTRACTION OIL AND GAS, DETERMINED THE SURFACE LOCATION OF THE WELL DESIGNATED AS T-BONE 22N-20-12 TO BE 594' FROM THE SOUTH LINE AND 2334' FROM THE WEST LINE OF SECTION 28, TOWNSHIP 5 NORTH, RANGE 66 WEST OF THE 6TH P.M., WELD COUNTY, COLORADO.



MICHAEL GERARD STRATTON COLORADO PLS 38621
 DATE OF SURVEY: 10/22/2024 (SECTION CONTROL)
 DATE OF SURVEY: 12/18/2023 (WELL LOCATION)

SURFACE POINT			LANDING POINT/BEGIN HORIZONTAL COMPLETION ZONE			BOTTOM HOLE/END HORIZONTAL COMPLETION ZONE				
594'	FSL	2334'	160'	FSL	1976'	FEL	350'	FSL	1945'	FEL

SURFACE POINT					LANDING POINT		BOTTOM HOLE	
LATITUDE	LONGITUDE	ELEVATION	PDOP	OPERATOR	LATITUDE	LONGITUDE	LATITUDE	LONGITUDE
40.364889	-104.785716	4812	1.494	R.WARD	40.378238	-104.763321	40.407882	-104.763276

LAMP RYNEARSON

OMAHA, NEBRASKA
 14710 W. DODGE RD., STE. 100 (402)496-2498
 FORT COLLINS, COLORADO
 4715 INNOVATION DR., STE. 100 (970)229-0342
 KANSAS CITY, MISSOURI
 9001 STATE LINE RD., STE. 200 (816)351-0440

DESIGNER / DRAFTER
JOSH CROAK
 REVIEWER
MICHAEL STRATTON
 PROJECT NUMBER
0221023
 DATE
03/25/2025
 SURFACE LOCATION
SE4, SW4, S28, T5N, R66W
 BOOK AND PAGE

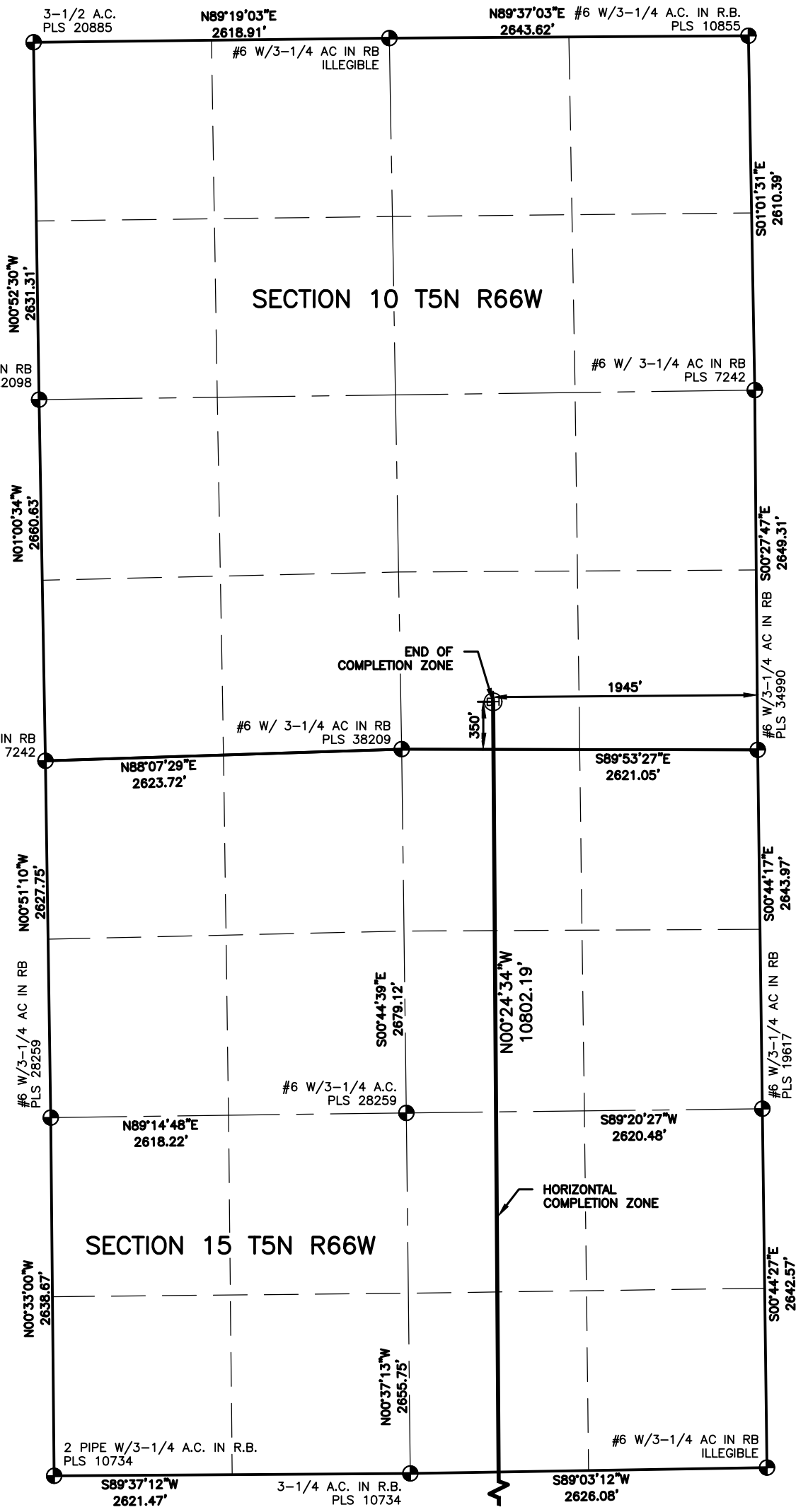
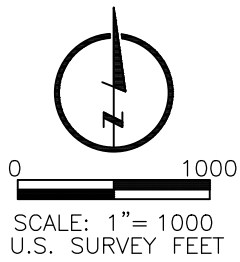
WELL LOCATION PLAT

EXTRACTION OIL AND GAS

T-BONE 22N-20-12



L:\Engineering\0221023\01_X06_T Bone_ILSURVEY\DRAWINGS\EXHIBITS\WELL_PLATS\T-BONE_22N-20-12.dwg, 3/25/2025 2:21:43 PM, JOSHUA A. CROAK, LAMP RYNEARSON



NOTES:

1. DISTANCES ARE MEASURED PERPENDICULAR TO NEAREST SECTION LINE AND ARE SHOWN ON THE SAME SIDE OF THE SECTION LINE WHERE THE WELL IS LOCATED.
2. ALL LINEAL DISTANCES SHOWN USE THE U.S. SURVEY FOOT; DEFINED AS 1 U.S. FOOT = 1200/3937 METERS.
3. THIS MAP DOES NOT REPRESENT A MONUMENTED BOUNDARY SURVEY. SIXTEENTH CORNER LOCATIONS ARE COMPUTED, UNLESS OTHERWISE NOTED.
4. BOTTOM HOLE LOCATIONS AND HORIZONTAL COMPLETION ZONE PROVIDED BY OTHERS.
5. ALL REBAR AND CAPS ARE MEASURED IN INCHES.
6. ELEVATIONS ARE BASED ON THE NORTH AMERICAN VERTICAL DATUM OF 1988 AS MEASURED BY GNSS OBSERVATIONS USING GEOID 18.

BASIS OF BEARING:

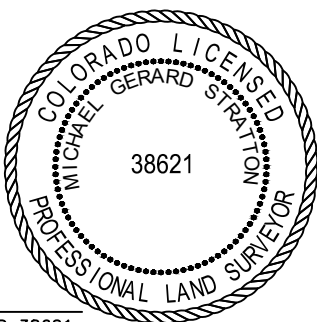
THE EAST LINE OF THE SOUTHWEST QUARTER OF SECTION 28-T5N-R66W BEARS N00°04'23"W FOR A DISTANCE OF 2642.41' FEET BETWEEN THE SOUTH QUARTER CORNER OF SECTION 28 MONUMENTED BY A 2-1/4" PIPE WITH A 3-1/4" BRASS CAP STAMPED, "PLS 16415", AND AT THE CENTER QUARTER CORNER OF SECTION 28, MONUMENTED BY A 3/4" REBAR WITH A 3-1/4" ALUMINUM CAP STAMPED, "PLS 34995", BEING A GRID BEARING USING THE COLORADO STATE PLANE SYSTEM, NORTH ZONE, BASED ON THE NORTH AMERICAN DATUM OF 1983(2011).

LEGEND

- ◆ COMPUTED ALIQUOT CORNER
- ⊙ PROPOSED WELL
- ⊕ ALIQUOT CORNER
- A.C. ALUMINUM CAP
- ⊙ BOTTOM HOLE
- R.B. RANGE BOX
- ⊙ ALIQUOT WITNESS CORNER
- CONC. CONCRETE
- △ LANDING POINT
- I.C.V.B. IRRIGATION CONTROL VALVE BOX

LAND SURVEYOR'S CERTIFICATION

LAMP RYNEARSON, INC. OF FT. COLLINS, COLORADO HAS, IN ACCORDANCE WITH A REQUEST FROM KALEB ROUSH OF EXTRACTION OIL AND GAS, DETERMINED THE SURFACE LOCATION OF THE WELL DESIGNATED AS T-BONE 22N-20-12 TO BE 594' FROM THE SOUTH LINE AND 2334' FROM THE WEST LINE OF SECTION 28, TOWNSHIP 5 NORTH, RANGE 66 WEST OF THE 6TH P.M., WELD COUNTY, COLORADO.



MICHAEL GERARD STRATTON COLORADO PLS 38621
 DATE OF SURVEY: 10/22/2024 (SECTION CONTROL)
 DATE OF SURVEY: 12/18/2023 (WELL LOCATION)

SURFACE POINT				LANDING POINT/BEGIN HORIZONTAL COMPLETION ZONE				BOTTOM HOLE/END HORIZONTAL COMPLETION ZONE			
594'	FSL	2334'	FWL	160'	FSL	1976'	FEL	350'	FSL	1945'	FEL

SURFACE POINT					LANDING POINT		BOTTOM HOLE	
LATITUDE	LONGITUDE	ELEVATION	PDOP	OPERATOR	LATITUDE	LONGITUDE	LATITUDE	LONGITUDE
40.364889	-104.785716	4812	1.494	R.WARD	40.378238	-104.763321	40.407882	-104.763276

LAMP RYNEARSON

OMAHA, NEBRASKA
 14710 W. DODGE RD., STE. 100 (402)496-2498
 FORT COLLINS, COLORADO
 4715 PINEWATER DR., STE. 100 (970)229-0342
 KANSAS CITY, MISSOURI
 9001 STATE LINE RD., STE. 200 (816)361-0440

DESIGNER / DRAFTER
JOSH CROAK
 REVIEWER
MICHAEL STRATTON
 PROJECT NUMBER
0221023
 DATE
03/25/2025
 SURFACE LOCATION
SE4, SW4, S28, T5N, R66W
 BOOK AND PAGE

WELL LOCATION PLAT
 EXTRACTION OIL AND GAS
 T-BONE 22N-20-12

