

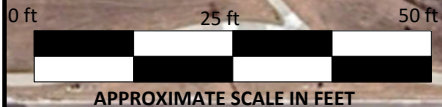


BK-01 @ 6"	
2/10/2025	
Boron	0.41
EC	0.76
pH	8.47
SAR	0.49

BK-04		
2/27/2025		
DEPTH	18"	4'
Boron	NA	NA
EC	NA	NA
pH	7.87	8.04
SAR	NA	NA

BK-02 @ 6"	
2/10/2025	
Boron	0.74
EC	1.48
pH	8.21
SAR	1.09

BK-03 @ 8"	
2/10/2025	
Boron	0.45
EC	0.77
pH	8.39
SAR	0.68



PETRO OPERATING, LLC
BEF PAD LACT UNIT SPILL/RELEASE POINT ID 488985
LAT 39.994142, LONG -104.734264
CITY OF BRIGHTON, ADAMS COUNTY



TABLE 2 ANALYTICAL SAMPLE MAP – BACKGROUND SAMPLES

Legend

- Background Soil Sample
- Soil Sample In Compliance With Table 915-1

NOTES: VALUES PRESENTED IN **BOLD** EXCEED ECMC TABLE 915-1 REGULATORY LIMITS

ECMC TABLE 915-1 SOIL STANDARDS			
Compund	Concentrations	Compund	Concentrations
Benzene	1.2mg/kg	1,3,5-TMB	27mg/kg
Touluene	490mg/kg	Boron	2mg/l
Ethylbenzene	5.8mg/kg	EC	<4mmhos/cm
Xylenes	58mg/kg	pH	6-8.3
TPH	500mg/kg	SAR	<6
1,2,4-TMB	30mg/kg		

mg/l – milligrams per litter
 mmhos/cm – millimhos per centimeter
 mg/kg – milligrams per kilogram

Imagery Source: Google Earth 2024

Prepared By:
Ardor Environmental LLC

March 25, 2025



BK-01 @ 6"
2/10/2025

Depth	4'
arsenic	2.51
barium	91.35
cadmium	0.12
chromium (VI)	0.08
copper	8.12
lead	5.51
nickel	5.44
selenium	2.13
silver	0.27
zinc	22.8

BK-04
2/27/2025

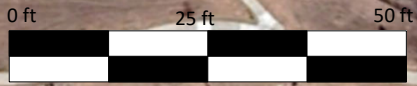
DEPTH	18"	4'
arsenic	4.67	5.04
barium	NA	NA
cadmium	NA	NA
chromium (VI)	NA	NA
copper	NA	NA
lead	NA	NA
nickel	NA	NA
selenium	NA	NA
silver	NA	NA
zinc	NA	NA

BK-02 @ 6"
2/10/2025

Depth	4'
arsenic	2.94
barium	83.25
cadmium	0.35
chromium (VI)	0.12
copper	16.32
lead	11.54
nickel	7.3
selenium	3.07
silver	1.3
zinc	43.75

BK-03 @ 6"
2/10/2025

Depth	4'
arsenic	3.12
barium	295.82
cadmium	0.16
chromium (VI)	<0.08
copper	9.36
lead	7.06
nickel	6.98
selenium	2.22
silver	<0.25-RL
zinc	26.61



PETRO OPERATING, LLC
BEF PAD LACT UNIT SPILL/RELEASE POINT ID 488985
LAT 39.994142, LONG -104.734264
CITY OF BRIGHTON, ADAMS COUNTY
TABLE 4 ANALYTICAL SAMPLE MAP – BACKGROUND SAMPLES



Legend

- Background Soil Sample
- Soil Sample In Compliance With Table 915-1

NOTES: VALUES PRESENTED IN **BOLD** EXCEED ECMC TABLE 915-1 REGULATORY LIMITS

ECMC TABLE 915-1 SOIL STANDARDS

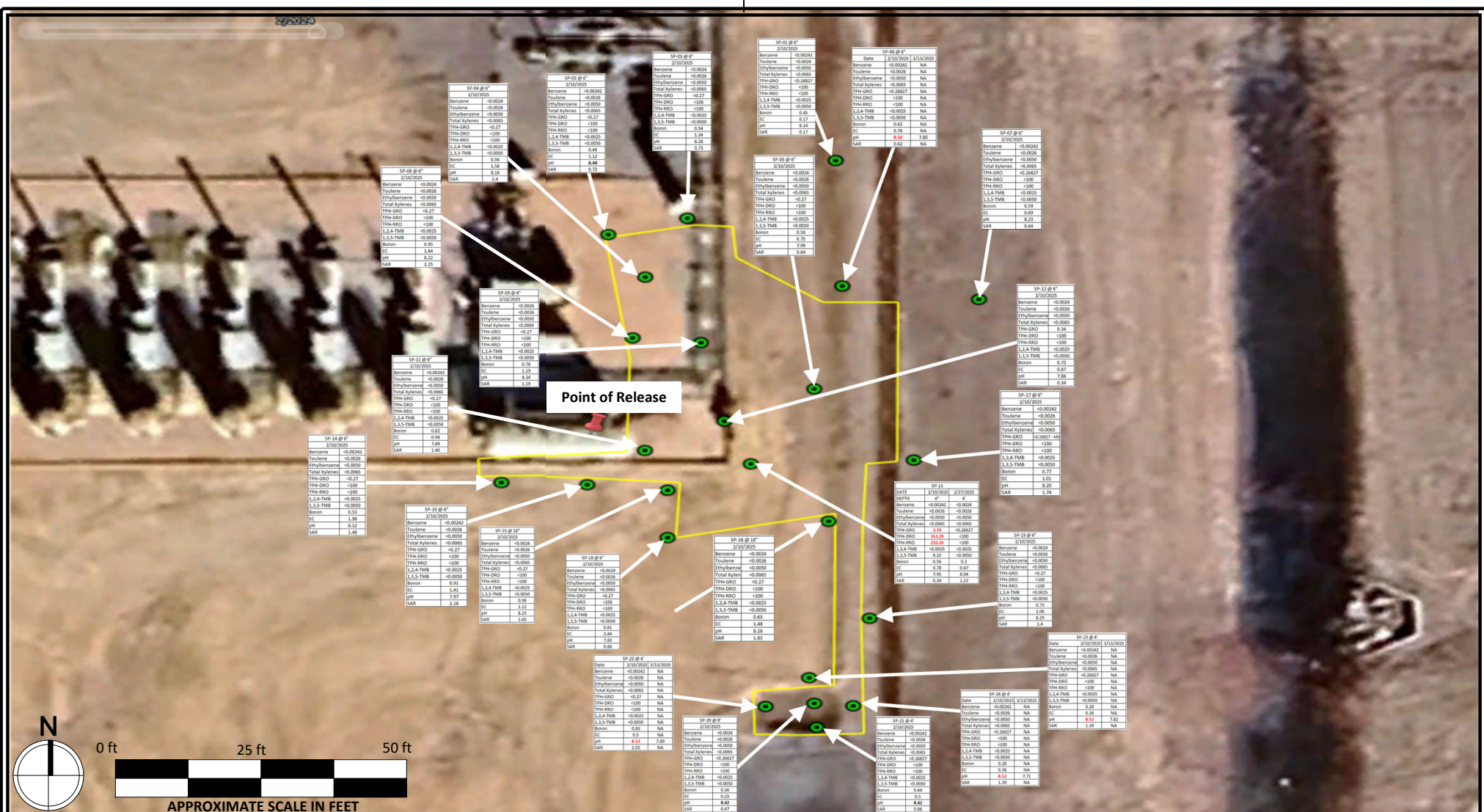
Compound	Concentrations (mg/kg)	Compound	Concentrations (mg/kg)
Arsenic	0.68	Lead	400
Barium	15000	Nickel	1500
Cadmium	71	Selenium	390
Chromium (VI)	0.3	Silver	390
Copper	3100	Zinc	23000

mg/kg – milligrams per kilogram

Imagery Source: Google Earth 2024

Prepared By:
Ardor Environmental LLC

March 25, 2025



PETRO OPERATING, LLC
BEF PAD LACT UNIT SPILL/RELEASE POINT ID 488985
LAT 39.994142, LONG -104.734264
CITY OF BRIGHTON, ADAMS COUNTY
TABLE 2 ANALYTICAL SAMPLE MAP – RELEASE CONFIRMATION SAMPLES

Legend

- Background Soil Sample
- Soil Sample In Compliance With Table 915-1
- Release Excavation Area

NOTES: VALUES PRESENTED IN **BOLD** EXCEED ECMC TABLE 915-1 REGULATORY LIMITS

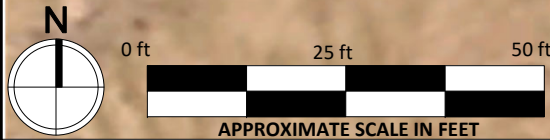
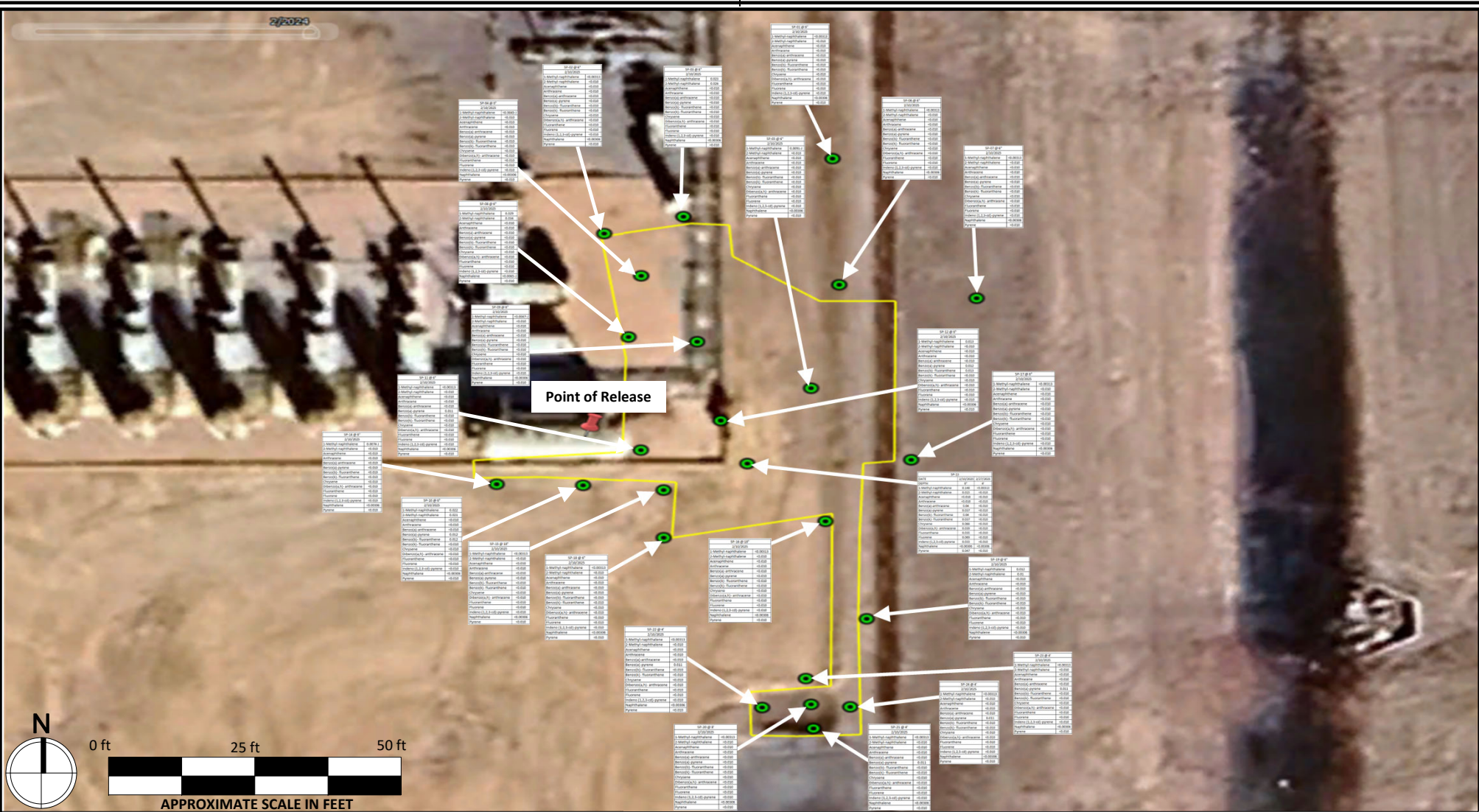
ECMC TABLE 915-1 SOIL STANDARDS			
Compound	Concentrations	Compound	Concentrations
Benzene	1.2mg/kg	1,3,5-TMB	27mg/kg
Toluene	490mg/kg	Boron	2mg/l
Ethylbenzene	5.8mg/kg	EC	<4mmhos/cm
Xylenes	58mg/kg	pH	6-8.3
TPH	500mg/kg	SAR	<6
1,2,4-TMB	30mg/kg		

mg/l – milligrams per liter
 mmhos/cm – millimhos per centimeter
 mg/kg – milligrams per kilogram



Prepared By:
Ardor Environmental LLC
 March 25, 2025

2/2/2025



PETRO OPERATING, LLC
 BEF PAD LACT UNIT SPILL/RELEASE POINT ID 488985
 LAT 39.994142, LONG -104.734264
 CITY OF BRIGHTON, ADAMS COUNTY

TABLE 3 ANALYTICAL SAMPLE MAP – RELEASE CONFIRMATION SAMPLES

Legend

- Background Soil Sample
- Soil Sample In Compliance With Table 915-1
- Release Excavation Area

NOTES: VALUES PRESENTED IN **BOLD** EXCEED ECMC TABLE 915-1 REGULATORY LIMITS

ECMC TABLE 915-1 SOIL STANDARDS			
Compound	Concentrations (mg/kg)	Compound	Concentrations (mg/kg)
1-Methyl-naphthalene	18	Chrysene	110
2-Methyl-naphthalene	24	Dibenzo(a,h)-anthracene	0.11
Acenaphthene	360	Fluoranthene	240
Anthracene	1800	Fluorene	240
Benzo(a)-anthracene	1.1	Indeno (1,2,3-cd)-pyrene	1.1
Benzo(a)-pyrene	0.11	Naphthalene	2
Benzo(b)-fluoranthene	1.1	Pyrene	180
Benzo(k)-fluoranthene	11		

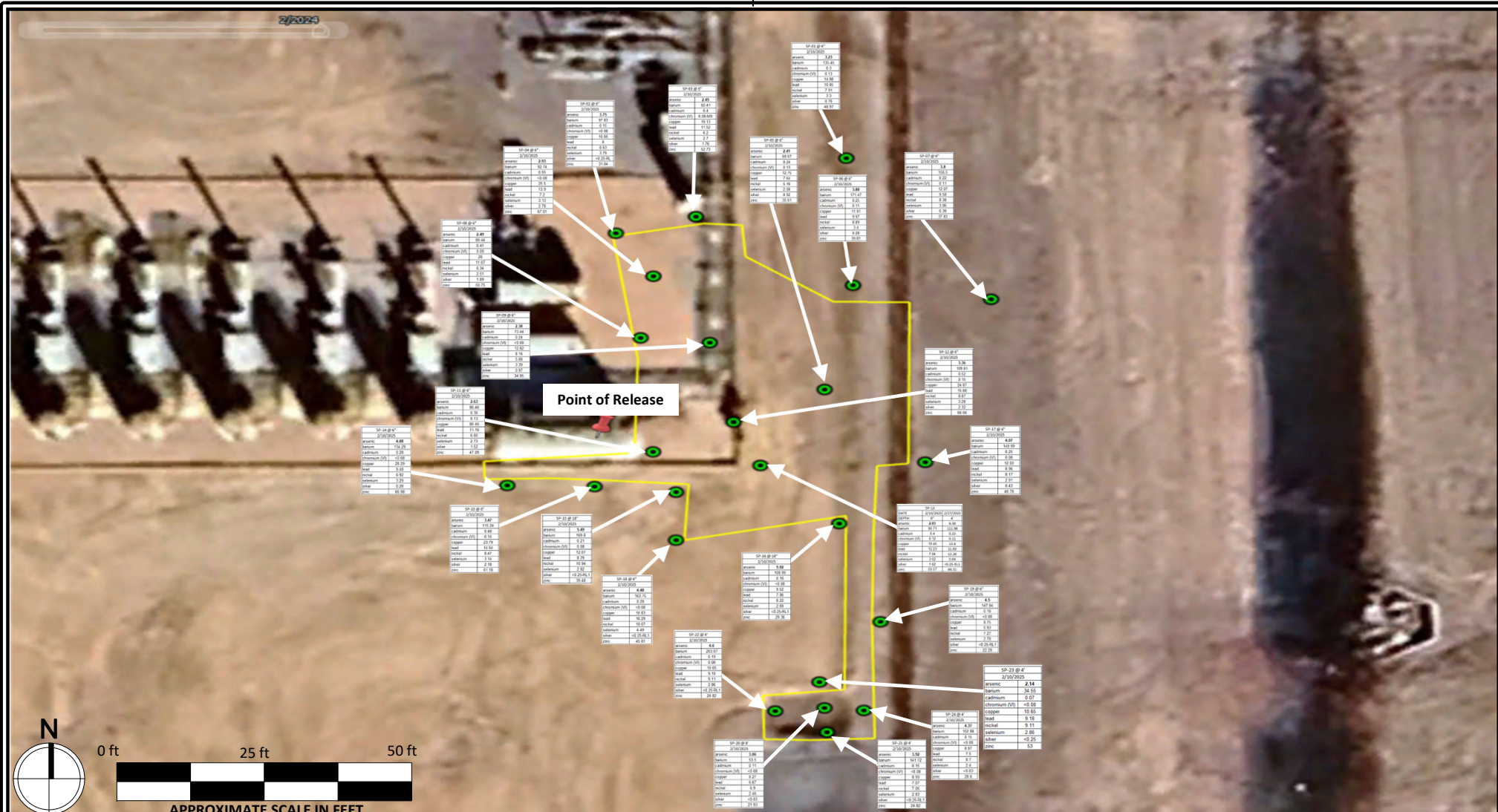
mg/kg – milligrams per kilogram



Prepared By:
 Ardor Environmental LLC

March 25, 2025

Imagery Source: Google Earth 2024



PETRO OPERATING, LLC
BEF PAD LACT UNIT SPILL/RELEASE POINT ID 488985
LAT 39.994142, LONG -104.734264
CITY OF BRIGHTON, ADAMS COUNTY
TABLE 4 ANALYTICAL SAMPLE MAP – RELEASE CONFIRMATION SAMPLES

Legend

- Background Soil Sample
- Soil Sample In Compliance With Table 915-1
- Release Excavation Area

NOTES: VALUES PRESENTED IN **BOLD** EXCEED ECMC TABLE 915-1 REGULATORY LIMITS

ECMC TABLE 915-1 SOIL STANDARDS			
Compound	Concentrations (mg/kg)	Compound	Concentrations (mg/kg)
Arsenic	0.68	Lead	400
Barium	15000	Nickel	1500
Cadmium	71	Selenium	390
Chromium (VI)	0.3	Silver	390
Copper	3100	Zinc	23000

mg/kg – milligrams per kilogram



Prepared By:
Ardor Environmental LLC

March 25, 2025

Imagery Source: Google Earth 2024