



**Company** CHEVRON  
**Well** RAY H12-24D  
**Field** WATTENBERG  
**County** WELD  
**State** CO

**Location:** SEC 12 TWP 3 RGE 65  
**API # :** 05-123-32007  
**Other Services**

**Permanent Datum** KB Elevation 4,858'  
**Log Measured From** KB  
**Drilling Measured From** KB  
**Elevation** K.B. 4,871'  
 D.F. 4,870'  
 G.L. 4,858'

Date	9-4-24			
Run Number	ONE			
Depth Driller	7,873'			
Depth Logger	840'			
Bottom Logged Interval	840'			
Top Log Interval	SURFACE			
Open Hole Size	12.25"			
Type Fluid	WATER			
Density / Viscosity	N/A			
Max. Recorded Temp.	N/A			
Estimated Cement Top	N/A			
Time Well Ready	7:30			
Time Logger on Bottom	7:50			
Equipment Number	473			
Location	RIG 12			
Recorded By	ZION DIONNE			
Witnessed By	BRANDON TRACY			

Run Number	Borehole Record			Tubing Record			
	Bit	From	To	Size	Weight	From	To
Casing Record							
Surface String		8 5/8"		Wgt/Ft		Top	Bottom
Prot. String				24#		SURFACE	695'
Production String		4.5"		11.6#		SURFACE	7,863'
Liner							

<<< Fold Here >>>

All interpretations are opinions based on inferences from electrical or other measurements and we cannot and do not guarantee the accuracy or correctness of any interpretation, and we shall not, except in the case of gross or willful negligence on our part, be liable or responsible for any loss, costs, damages, or expenses incurred or sustained by anyone resulting from any interpretation made by any of our officers, agents or employees. These interpretations are also subject to our general terms and conditions set out in our current Price Schedule.

**Comments**

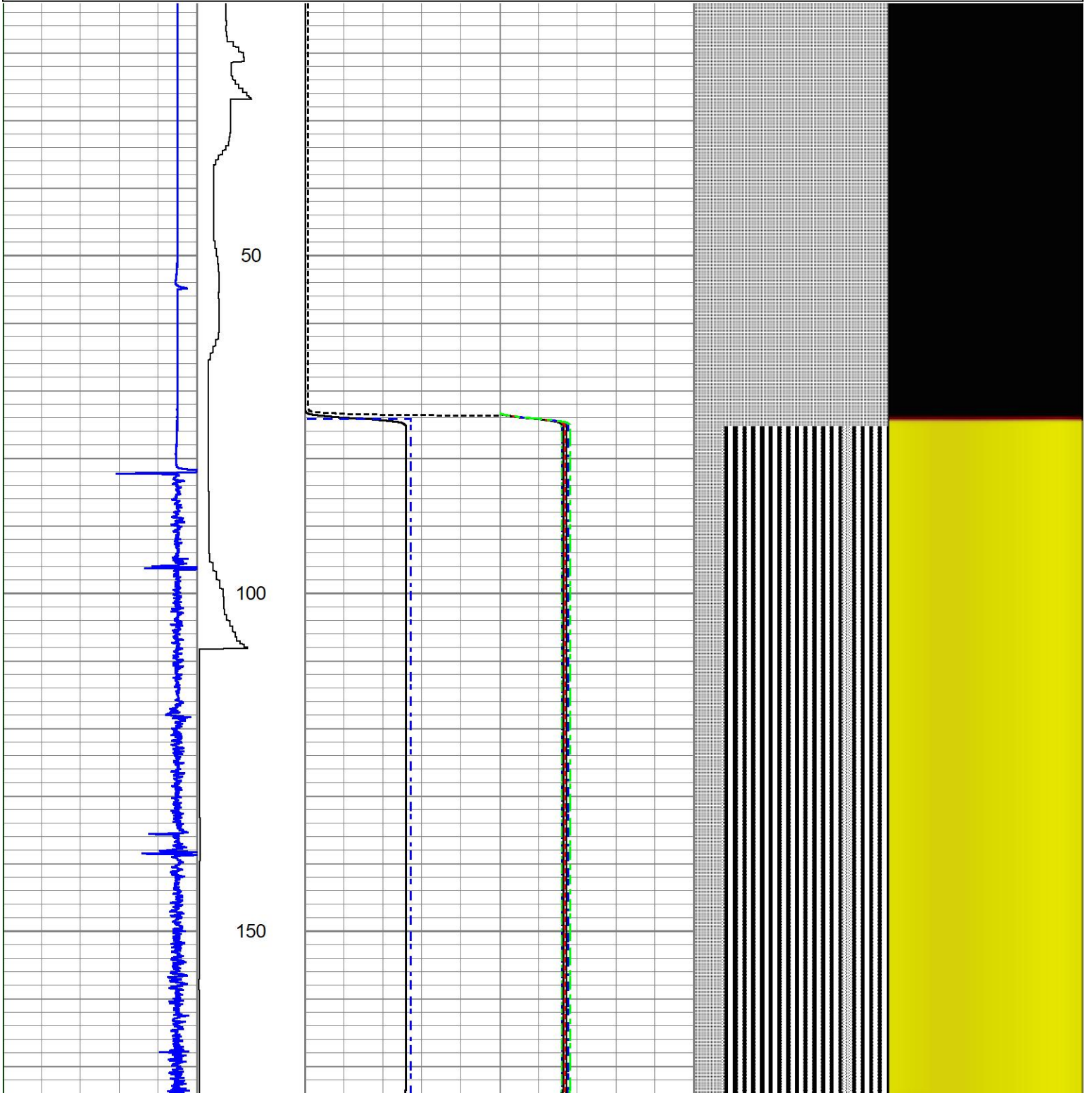
LOG RAN PER CUSTOMER REQUEST  
 DEPTH REFERENCED TO KB  
 ZERO PRESSURE APPLIED  
  
 MAIN PASS 840" TO SURFACE  
 TOOL SHUT OFF CLOSE TO SURFACE ANNOTATED ON THE LOG  
  
 THANK YOU FOR USING A-PLUS P&A LLC

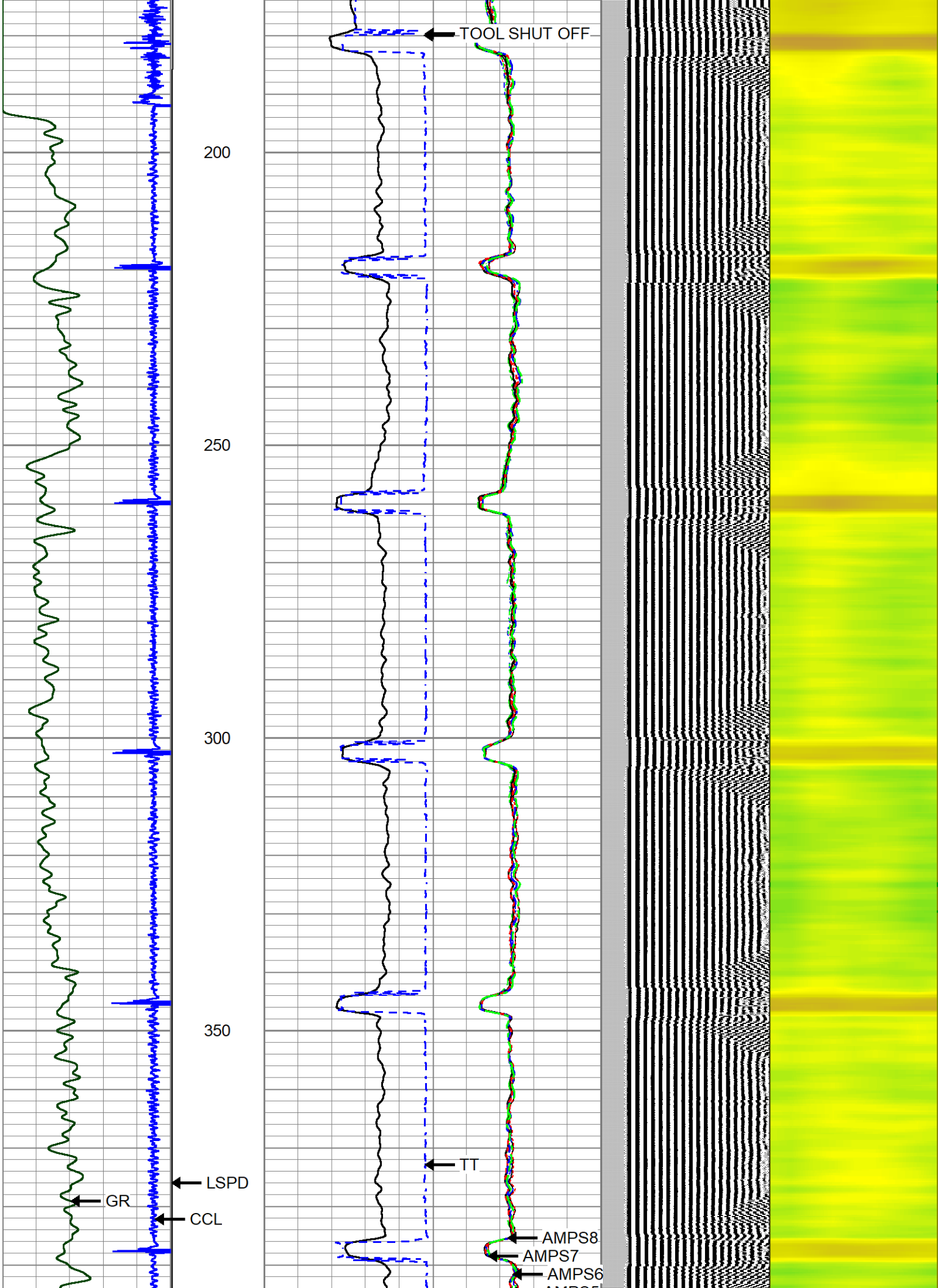


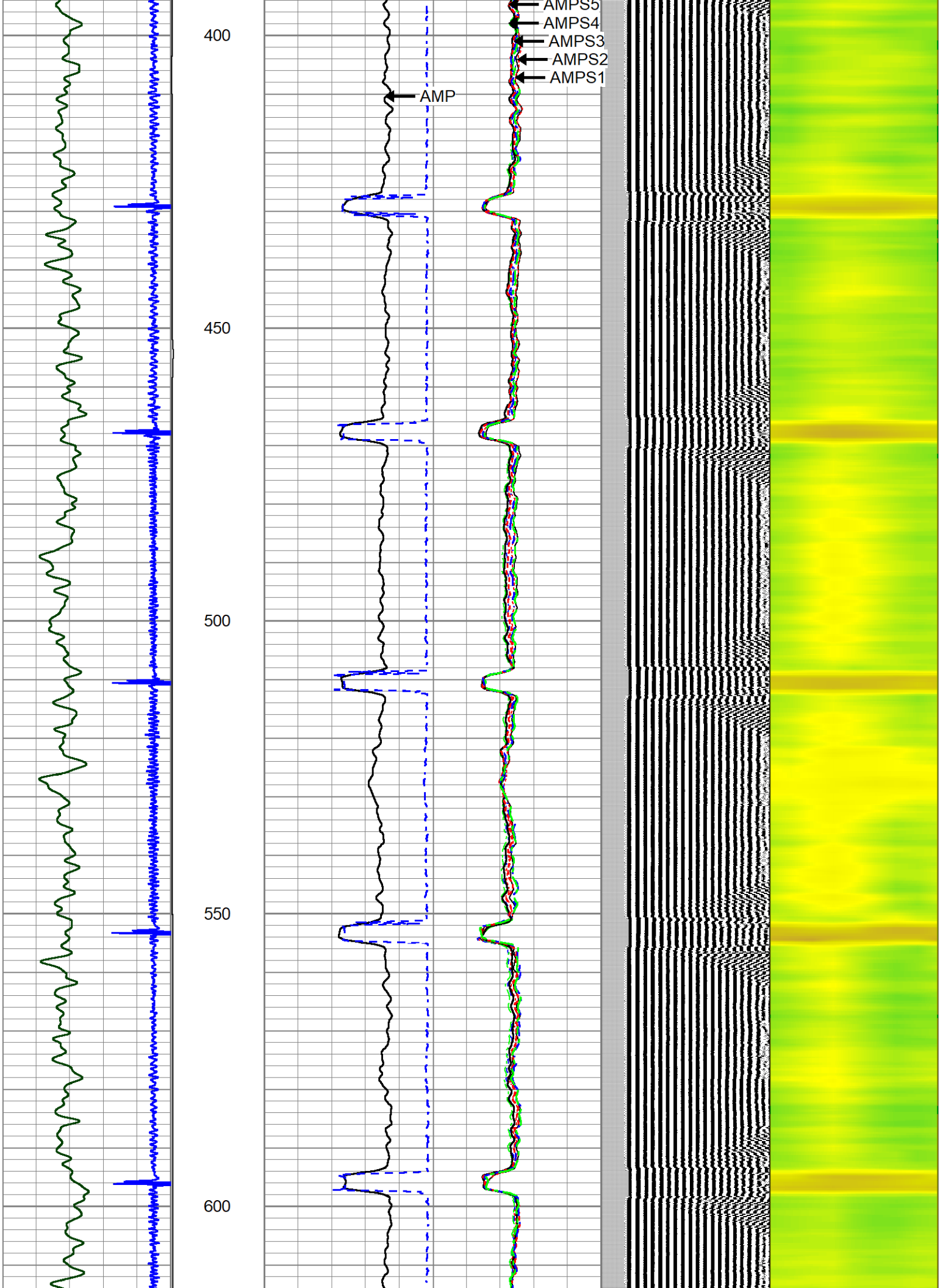
**MAIN PASS**

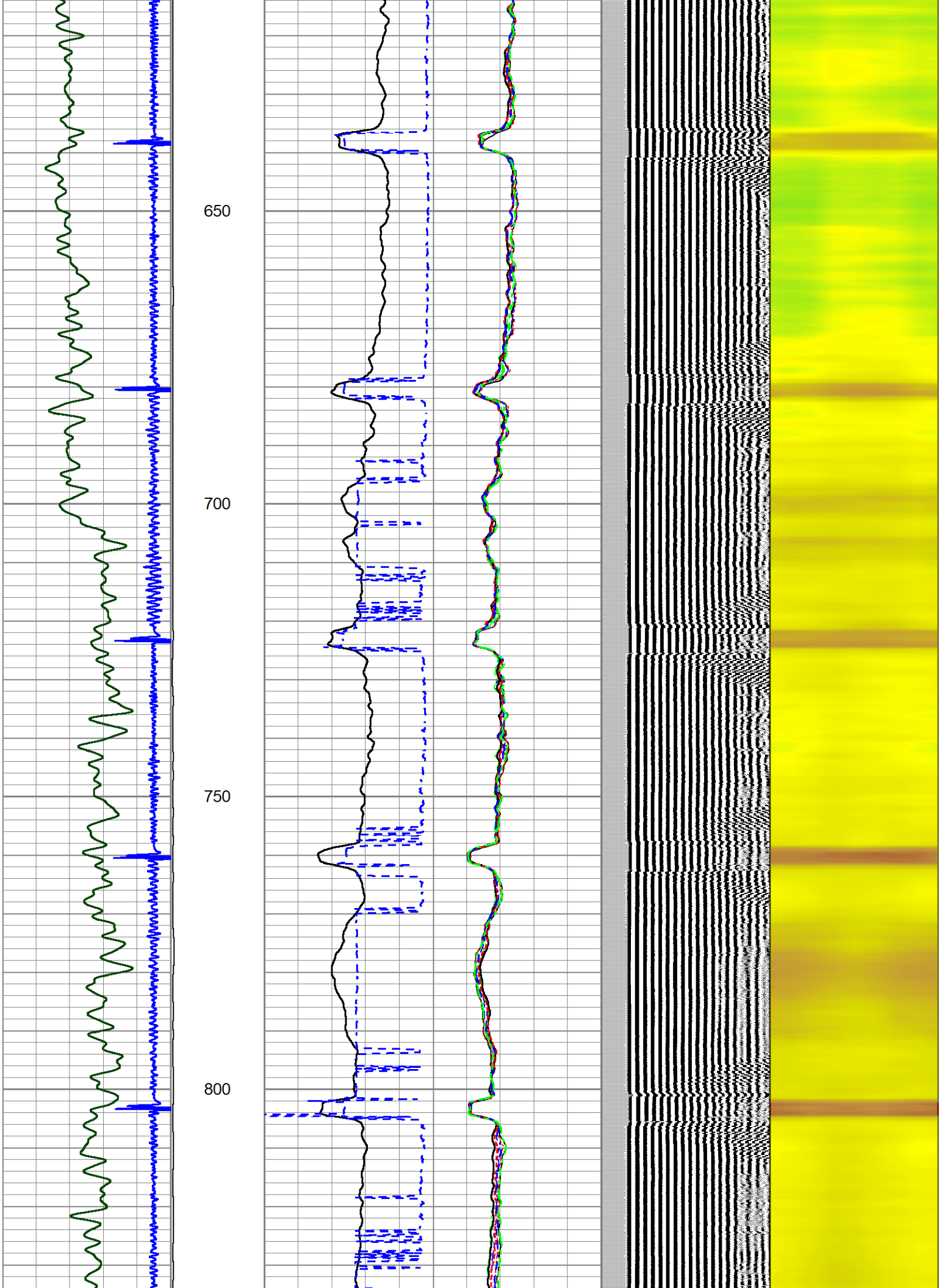
Database File 9-4-24.db  
 Dataset Pathname pass6  
 Presentation Format zionrbl  
 Dataset Creation Wed Sep 04 07:51:44 2024  
 Charted by Depth in Feet scaled 1:240

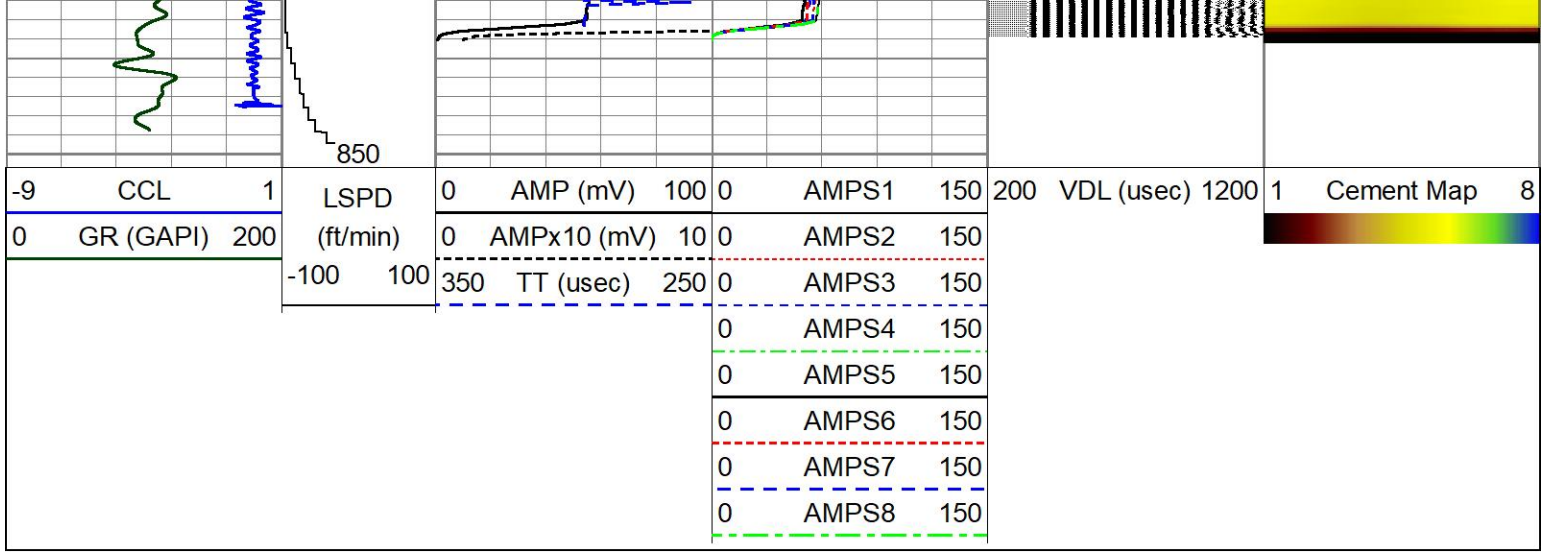
-9	CCL	1	LSPD	0	AMP (mV)	100	0	AMPS1	150	200	VDL (usec)	1200	1	Cement Map	8
0	GR (GAPI)	200	(ft/min)	0	AMPx10 (mV)	10	0	AMPS2	150						
			-100 100	350	TT (usec)	250	0	AMPS3	150						
							0	AMPS4	150						
							0	AMPS5	150						
							0	AMPS6	150						
							0	AMPS7	150						
							0	AMPS8	150						





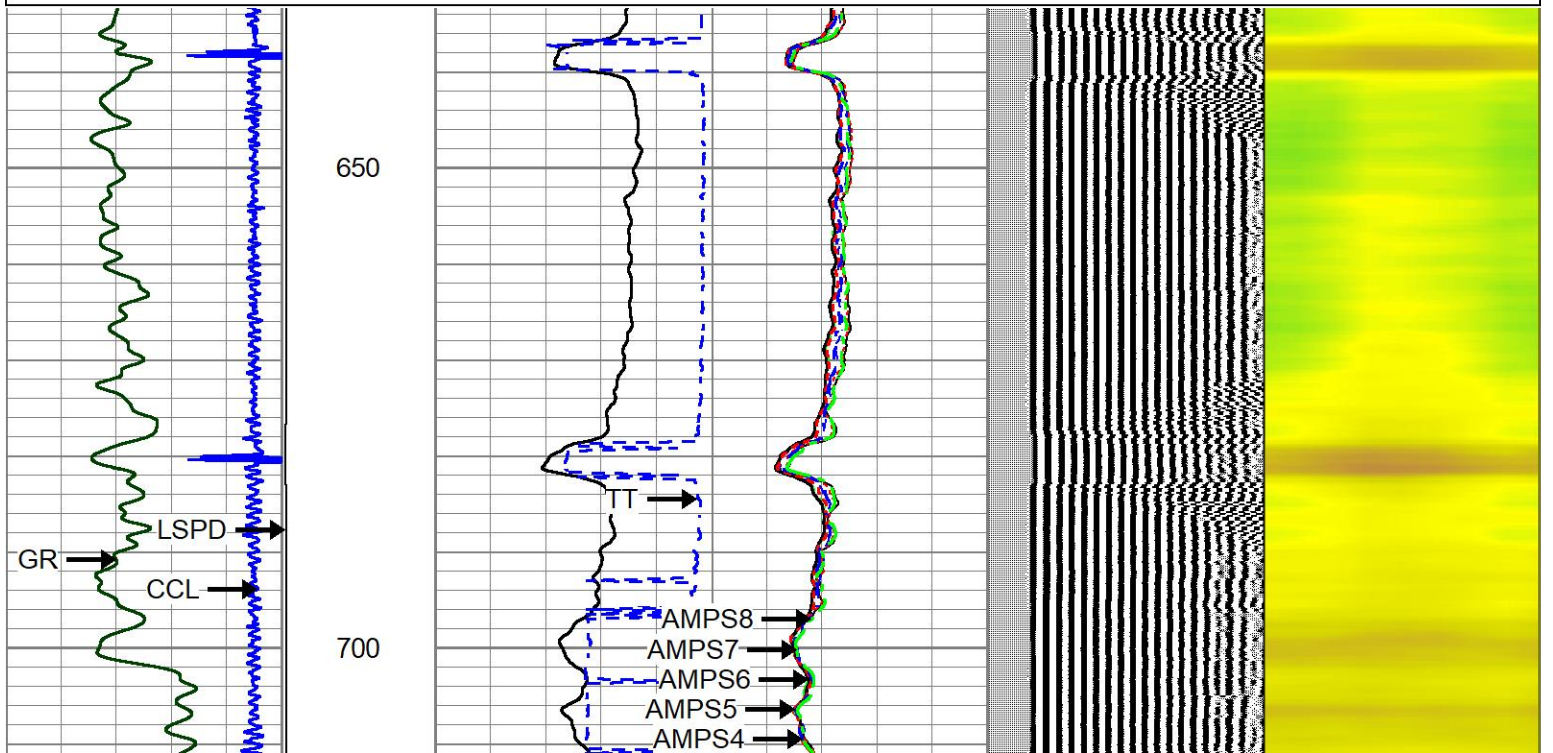
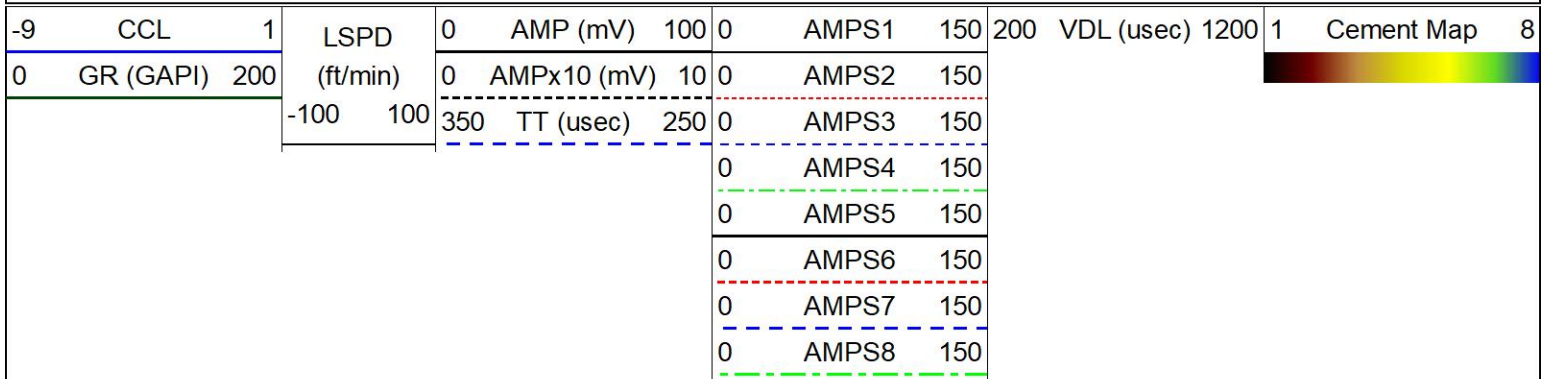


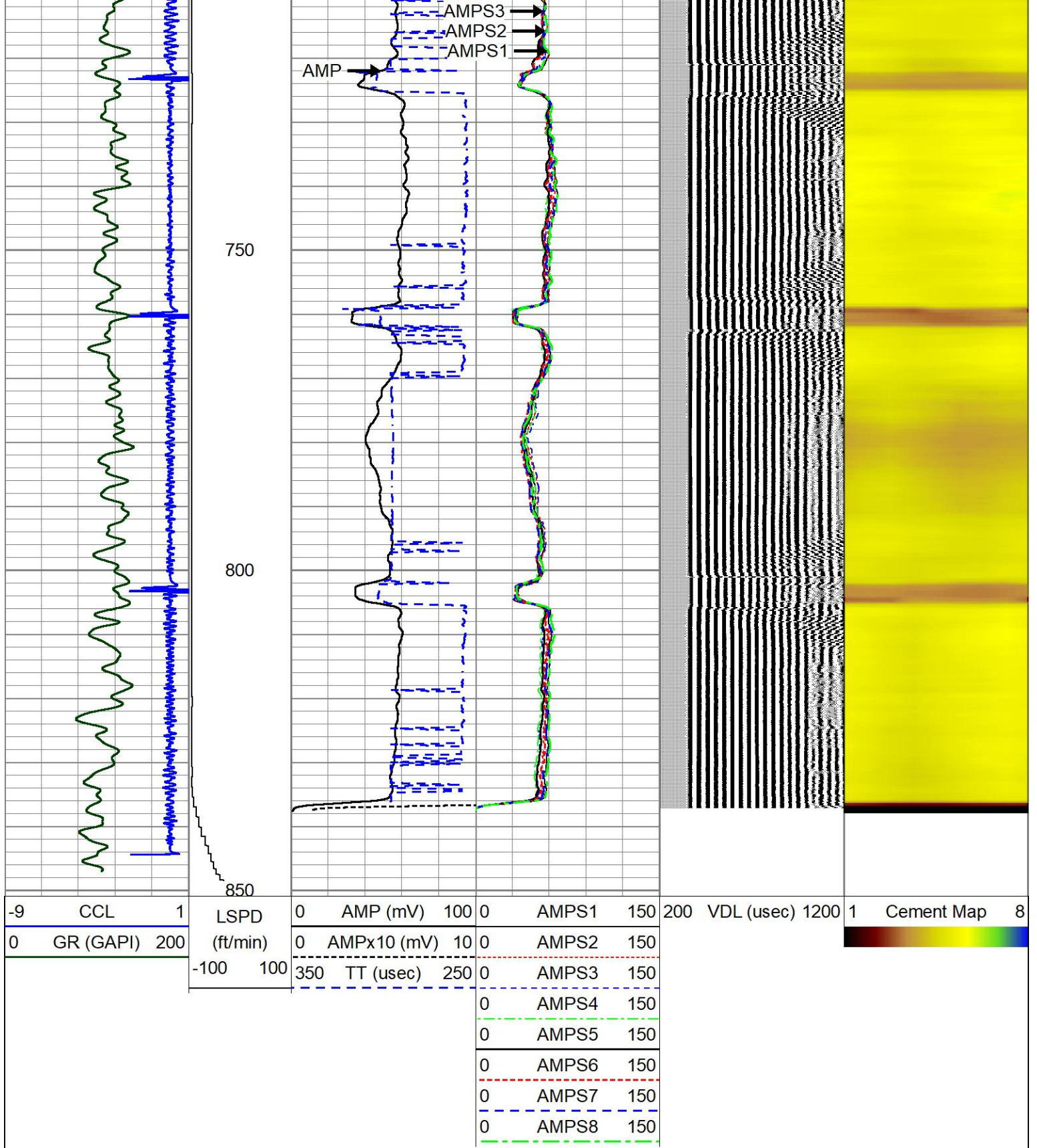




# REPEAT PASS

Database File 9-4-24.db  
 Dataset Pathname pass4  
 Presentation Format zionrbl  
 Dataset Creation Wed Sep 04 07:47:43 2024  
 Charted by Depth in Feet scaled 1:240





### Calibration Report

Database File 9-4-24.db  
 Dataset Pathname pass6  
 Dataset Creation Wed Sep 04 07:51:44 2024

### Gamma Ray Calibration Report

Serial Number: GCL004\_base  
 Tool Model: GCL004  
 Performed: (Not Performed)

Calibrator Value:	1.0	GAPI
Background Reading:	0.0	cps
Calibrator Reading:	1.0	cps
Sensitivity:	1.0000	GAPI/cps

Segmented Cement Bond Log Calibration Report

Serial Number:	FW2001-30	
Tool Model:	HTRCB-275	
Calibration Casing Diameter:	4.500	in
Calibration Depth:	108.370	ft

Master Calibration, performed Wed Sep 04 07:41:02 2024:

	Raw (v)		Calibrated (mv)		Results	
	Zero	Cal	Zero	Cal	Gain	Offset
3'	0.000	0.944	1.000	81.196	84.925	1.000
CAL	0.000	1.055				
5'	0.000	0.549	1.000	81.196	145.960	1.000
SUM						
S1	0.000	0.882	0.000	81.196	92.062	0.000
S2	0.000	0.873	0.000	81.196	93.011	0.000
S3	0.000	0.911	0.000	81.196	89.159	0.000
S4	0.000	0.981	0.000	81.196	82.791	0.000
S5	0.000	1.023	0.000	81.196	79.350	0.000
S6	0.000	1.013	0.000	81.196	80.150	0.000
S7	0.000	0.947	0.000	81.196	85.720	0.000
S8	0.000	0.871	0.000	81.196	93.247	0.000

Internal Reference Calibration, performed Fri Aug 23 07:44:06 2024:

	Raw (v)		Calibrated (v)		Results	
	Zero	Cal	Zero	Cal	Gain	Offset
CAL	0.000	0.000	0.000	1.055	1.000	0.000


Air Zero Calibration, performed Fri Apr 19 14:29:14 2024:

	Raw (v)		Calibrated (v)		Results	
	Zero		Zero			Offset
3'	0.000		0.000			0.000
5'	0.000		0.000			0.000
SUM						
S1	0.000		0.000			0.000
S2	0.000		0.000			0.000
S3	0.000		0.000			0.000
S4	0.000		0.000			0.000
S5	0.000		0.000			0.000
S6	0.000		0.000			0.000
S7	0.000		0.000			0.000
S8	0.000		0.000			0.000

Inclinometer Calibration Report

Performed:	(Not Performed)			
	Low Read.	High Read.	Low Ref.	High Ref.



GCT_IntTemp	2.00		0.33	1.38	1.00
GR	1.75				

Dataset: 9-4-24.db: field/well/run1/pass6  
 Total length: 24.36 ft  
 Total weight: 141.00 lb  
 O.D.: 2.75 in

## Log Variables

DatabaseC:\ProgramData\Warrior\Data\9-4-24.db  
 Dataset field/well/run1/pass6/\_vars\_

### Top - Bottom

BOREID in 7.875	BOTTEMP degF 100	CASEOD in 4.5	CASETHCK in 0	CASEWGHT lb/ft 11.6	MAXAMPL mV 81.2	MINAMPL mV 1	MINATTN db/ft 0.8
PERFS No	PPT usec 0	SRFTEMP degF 0	TDEPTH ft 0				

### Variable Description

BOREID : Borehole I.D.

BOTTEMP : Bottom Hole Temperature

CASEOD : Casing O.D.

CASETHCK : Casing Thickness

CASEWGHT : Casing Weight

MAXAMPL : Maximum Amplitude

MINAMPL : Minimum Amplitude

MINATTN : Minimum Attenuation

PERFS : Perforation Flag

PPT : Predicted Pipe Time

SRFTEMP : Surface Temperature

TDEPTH : Total Depth