

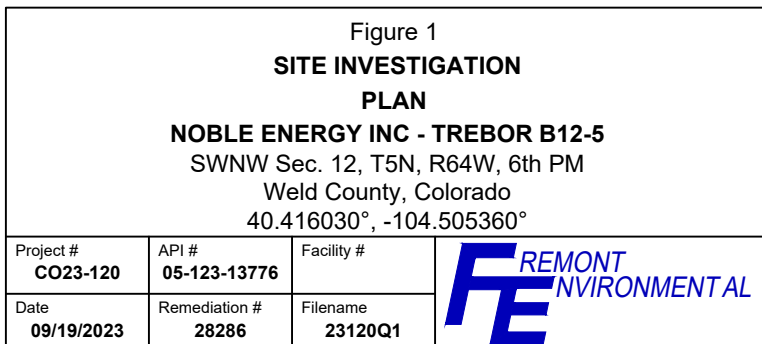
LEGEND			
● WELLHEAD LOCATION	○ ABOVE GROUND STORAGE TANK	FORMER FACILITY	FORMER FLOW LINE
● SOIL SAMPLE LOCATION		FORMER CONTAINMENT BERM	FORMER FENCE LINE

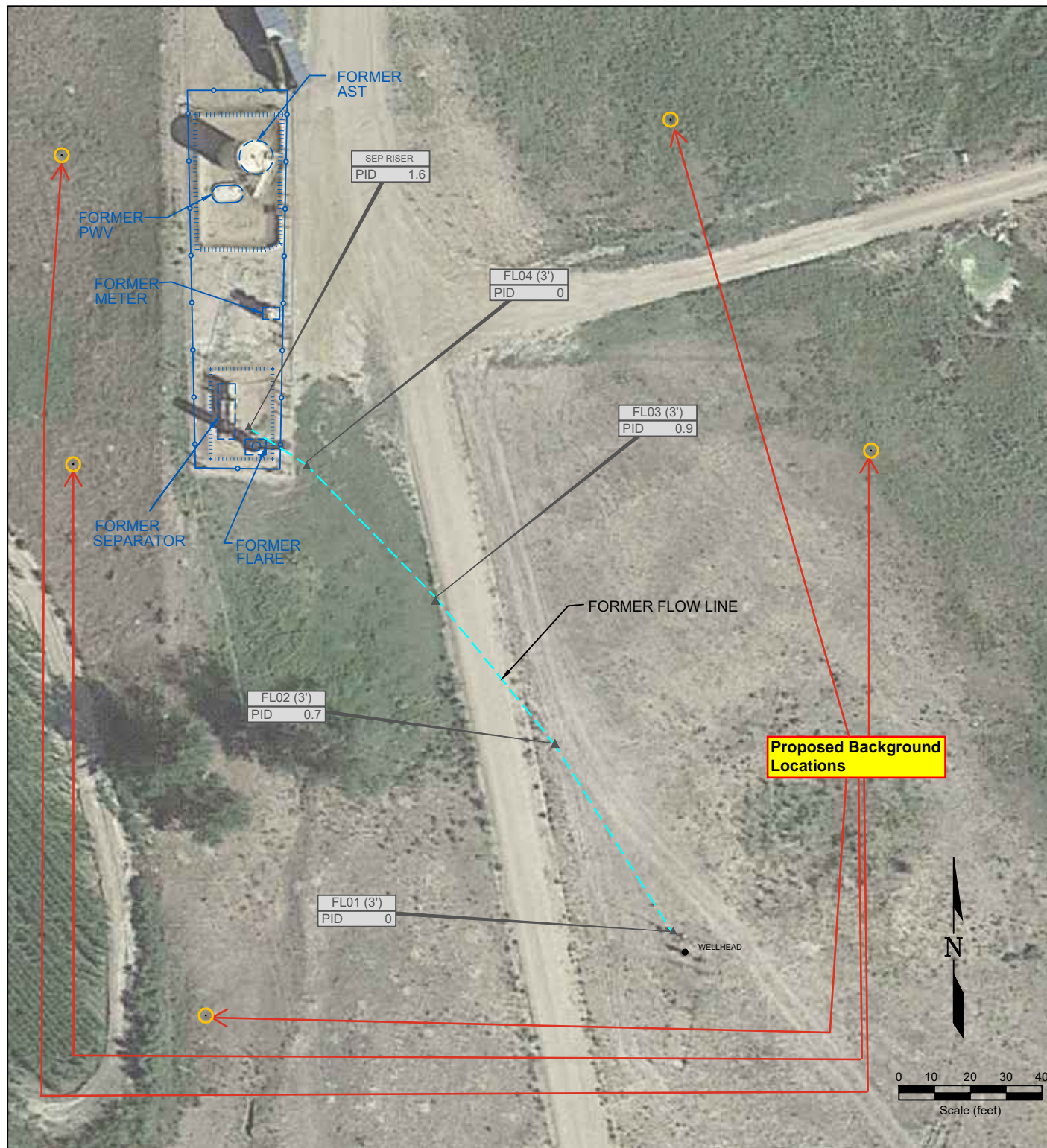
DATE SAMPLED	SAMPLE ID and DEPTH (ft)	DATE SAMPLED	SAMPLE ID and DEPTH (ft)	DATE SAMPLED	SAMPLE ID and DEPTH (ft)
4/7/2023	FL01 (4')	4/7/2023	FL01 (4')	4/7/2023	FL01 (4')
ACE	<0.00500	B	<0.0020	SAR	0.99
Ant	<0.00500	T	<0.0050	pH	8.54
BaA	<0.00500	E	<0.0050	EC	0.38
BbF	<0.00500	X	<0.010	B	0.035
BaP	<0.00500	FLU	<0.0050		
Chr	<0.00500	124TMB	<0.0050		
DBaAnt	<0.00500	135TMB	<0.0050		
FLU	<0.00500	N	<0.0038		
1123cdPY	<0.00500	G	<0.50		
1MN	<0.00500	D	<50		
2MN	<0.00500	O	<50		
PY	<0.00500				

DATE SAMPLED	SAMPLE ID and DEPTH (ft)	DATE SAMPLED	SAMPLE ID and DEPTH (ft)	DATE SAMPLED	SAMPLE ID and DEPTH (ft)
4/7/2023	FL01 (4')	4/7/2023	FL01 (4')	4/7/2023	FL01 (4')
ACE	<0.00500	B	<0.0020	SAR	0.99
Ant	<0.00500	T	<0.0050	pH	8.54
BaA	<0.00500	E	<0.0050	EC	0.38
BbF	<0.00500	X	<0.010	B	0.035
BaP	<0.00500	FLU	<0.0050		
Chr	<0.00500	124TMB	<0.0050		
DBaAnt	<0.00500	135TMB	<0.0050		
FLU	<0.00500	N	<0.0038		
1123cdPY	<0.00500	G	<0.50		
1MN	<0.00500	D	<50		
2MN	<0.00500	O	<50		
PY	<0.00500				







#### LEGEND

- WELLHEAD LOCATION
- ▲ PID READING LOCATION
- ABOVE GROUND STORAGE TANK
- FORMER FACILITY
- FORMER FLOW LINE
- FORMER CONTAINMENT BERM FENCE LINE

FL01  
PID 0.1  
PID READING LOCATION IDENTIFICATION  
PHOTO IONIZATION DETECTION (ppm)

#### Figure 2 PROPOSED BACKGROUND LOCATIONS

**NOBLE ENERGY INC - TREBOR B12-5**  
SWNW Sec. 12, T5N, R64W, 6th PM  
Weld County, Colorado  
40.416030°, -104.505360°

Project # <b>CO23-120</b>	API # <b>05-123-13776</b>	Facility #
Date <b>09/19/2023</b>	Remediation # <b>28286</b>	Filename <b>23120Q1</b>

