



FIGURES

Figure 1: Topographic Site Location Map

Figure 2: Aerial Site Location Map

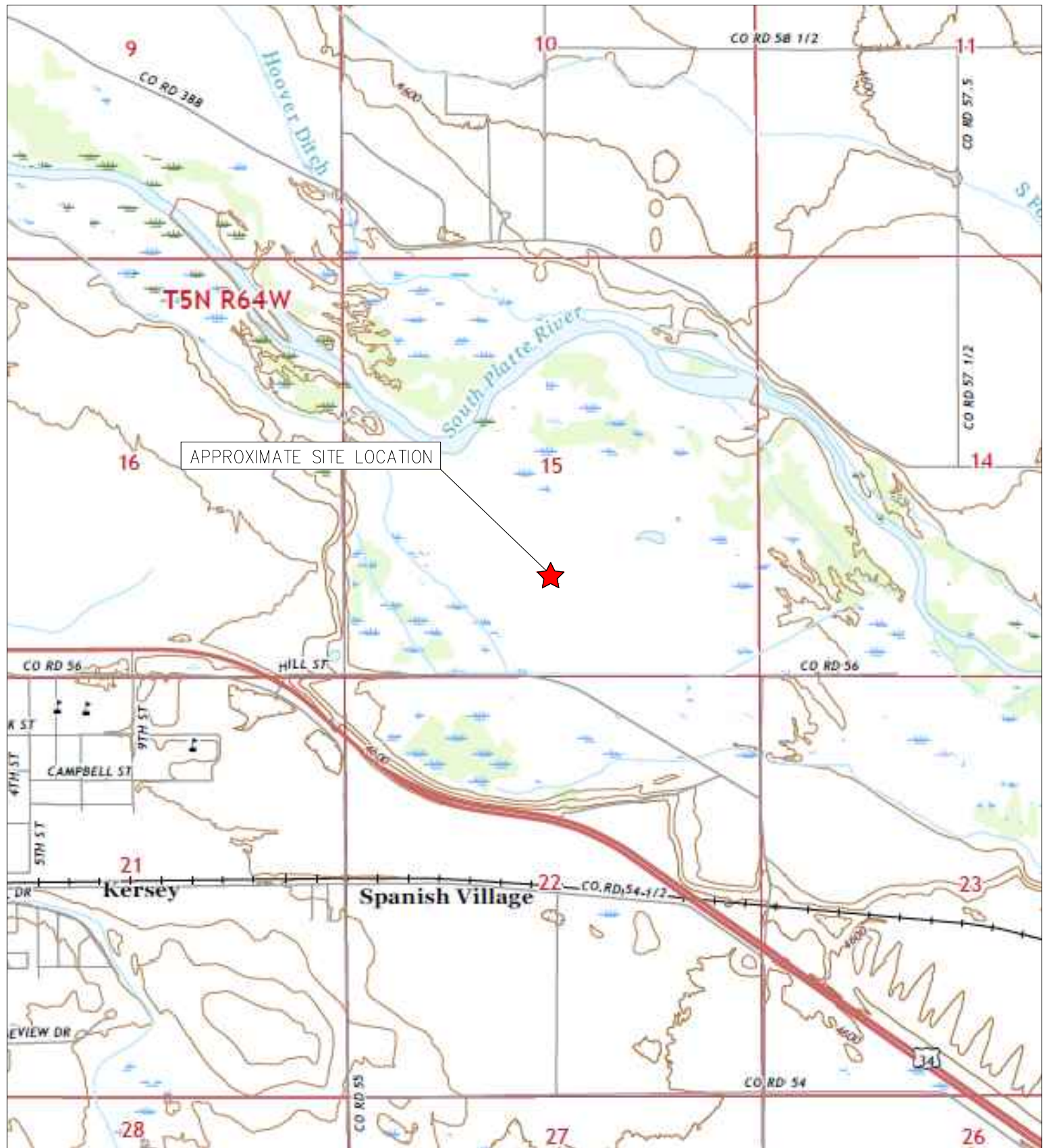
Figure 3: Monitoring Well Soil Analytical Map

Figure 4: Polycyclic Aromatic Hydrocarbons Map

Figure 5: Monitoring Well Metals in Soil Map

Figure 6: Groundwater Analytical Map (05/02/24)

Figure 7: Groundwater Elevation Map (05/02/24)



TOPOGRAPHIC SITE LOCATION MAP
 LOUSTELET T5N-R64W-S15 L01 TANK BATTERY
 HISTORICAL RELEASE
 40.395146 / -104.536147
 SE¼ SW¼ SEC.15 T5N R64W 6PM
 WELD COUNTY, COLORADO
 LOCATION ID 447668
 REMEDIATION # 23570

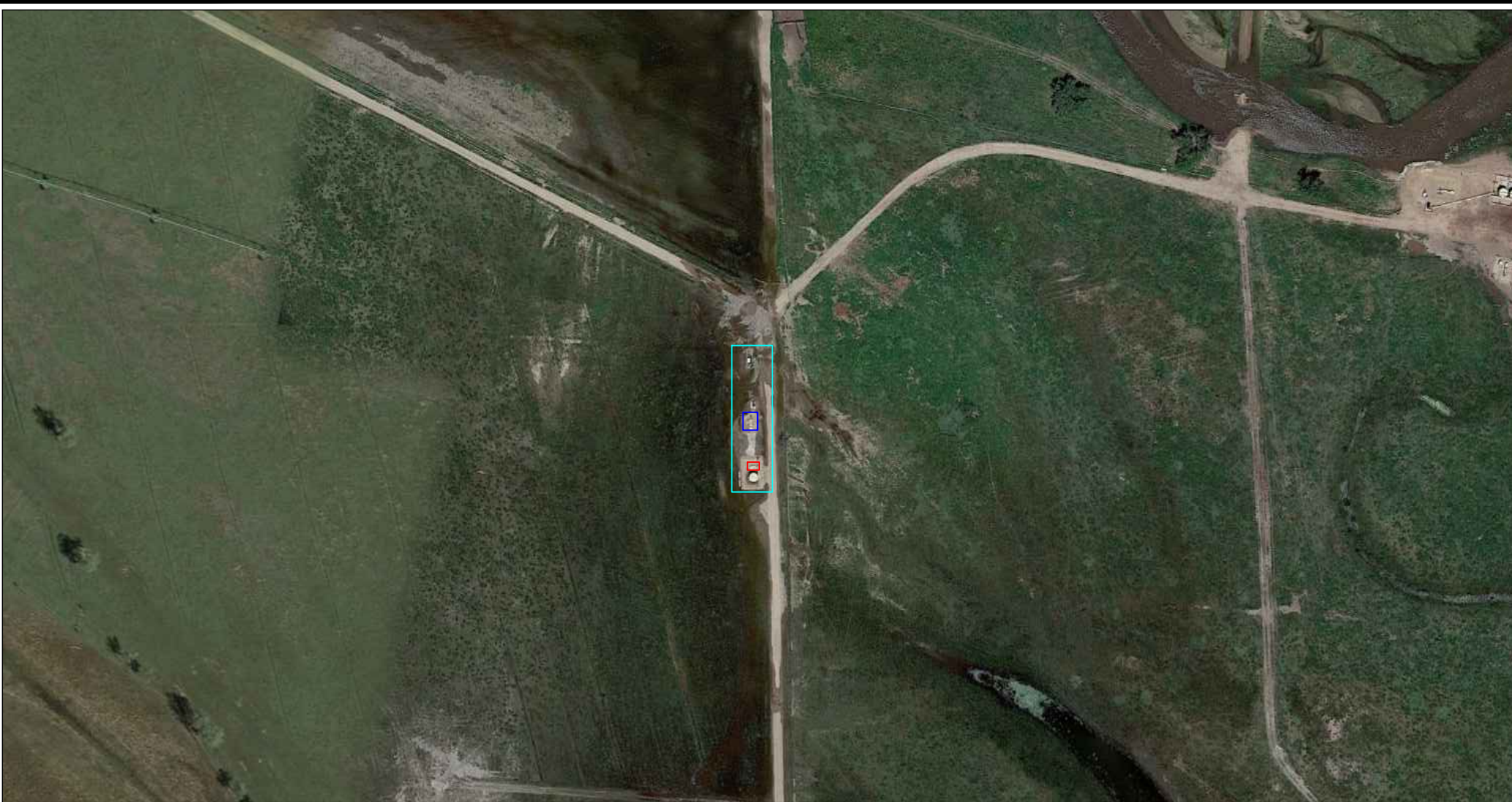
SOURCE: USGS 7.5 MINUTE TOPOGRAPHIC MAP,
 KERSEY, CO QUADRANGLE 2022

FIGURE NO. 1

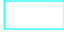
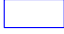



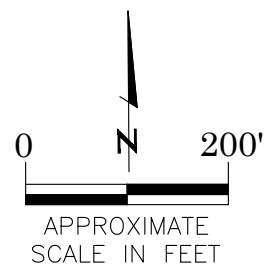
EAGLE
 ENVIRONMENTAL
 CONSULTING, LLC

8000 W 44th Ave, Wheat Ridge, CO 80033
 Ph: 303-433-0479 • F: 303-325-5449



LEGEND

-  FORMER LOUSTELET T5N-R64W-S15 L01 TANK BATTERY (DECOMMISSIONED)
-  SEPARATOR CONTAINMENT AREA (DECOMMISSIONED)
-  WATER VAULT LOCATION (REMOVED)



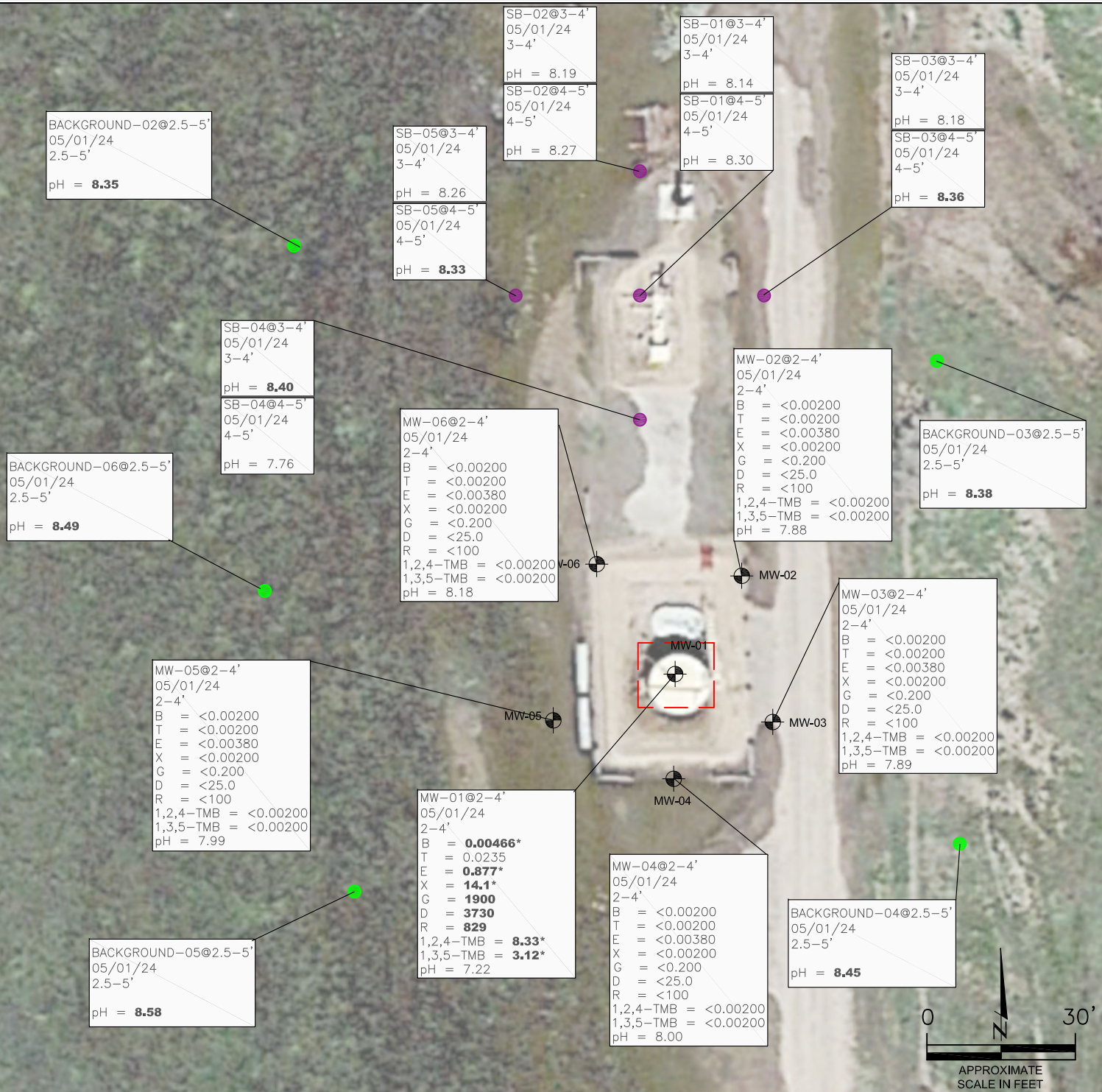
AERIAL SITE LOCATION MAP
LOUSTELET T5N-R64W-S15 L01 TANK BATTERY
HISTORICAL RELEASE
40.395146 / -104.536147
SE $\frac{1}{4}$ SW $\frac{1}{4}$ SEC.15 T5N R64W 6PM
WELD COUNTY, COLORADO
LOCATION ID 447668
REMEDIAION # 23570

FIGURE NO.
2

DRAWN BY:
CT



EAGLE
ENVIRONMENTAL
CONSULTING, LLC
8000 W 44th Ave, Wheat Ridge, CO 80033
Ph: 303-433-0479 • F: 303-325-5449



LEGEND

- WATER VAULT ASSESSMENT BOUNDARIES
- MONITORING WELL LOCATIONS
- BACKGROUND LOCATIONS
- SOIL BORING LOCATIONS

PARAMETERS

SAMPLE LOCATION
DATE
DEPTH (FEET)
B = BENZENE (mg/kg)
T = TOLUENE (mg/kg)
E = ETHYLBENZENE (mg/kg)
X = TOTAL XYLENES (mg/kg)
G = TPH-GRO (mg/kg)
D = TPH-DRO (mg/kg)
R = TPH-RRO (mg/kg)
1,2,4-TMB = 1,2,4 TRIMETHYLBENZENE (mg/kg)
1,3,5-TMB = 1,3,5 TRIMETHYLBENZENE (mg/kg)
pH = pH (pH UNITS)

mg/kg = MILLIGRAMS PER KILOGRAM

TPH-GRO = TOTAL PETROLEUM HYDROCARBONS - GASOLINE RANGE ORGANICS
TPH-DRO = TOTAL PETROLEUM HYDROCARBONS - DIESEL RANGE ORGANICS
TPH-RRO = TOTAL PETROLEUM HYDROCARBONS - RESIDUAL RANGE ORGANICS

NOTES:
VALUES PRESENTED WITH A LESS THAN SYMBOL (<) DID NOT CONTAIN CONCENTRATIONS AT OR ABOVE LABORATORY DETECTION LIMITS

VALUES PRESENTED IN **BOLD** EXCEED ECMC TABLE 915-1 REGULATORY LIMITS

VALUES PRESENTED WITH ASTERISK (*) EXCEED ECMC TABLE 915-1 PROTECTION OF GROUNDWATER SOIL SCREENING LEVELS, ONLY.

ECMC = ENERGY & CARBON MANAGEMENT COMMISSION

MONITORING WELL SOIL ANALYTICAL MAP
LOUSTELET T5N-R64W-S15 LOT TANK BATTERY
HISTORICAL RELEASE
40.395146 / -104.536147
SE¼ SW¼ SEC.15 T5N R64W 6PM
WELD COUNTY, COLORADO
LOCATION ID 447668
REMEDATION # 23570

FIGURE NO.
3

DRAWN BY:
RS





LEGEND

- WATER VAULT ASSESSMENT BOUNDARIES
- MONITORING WELL LOCATIONS

PARAMETERS

SAMPLE LOCATION
DATE SAMPLE COLLECTED
APPROXIMATE DEPTH

POLYCYCLIC AROMATIC HYDROCARBONS (PAHs) (mg/kg)

mg/kg = MILLIGRAMS PER KILOGRAM

NOTES:
VALUES PRESENTED WITH A LESS THAN SYMBOL (<) DID NOT
CONTAIN CONCENTRATIONS AT OR ABOVE LABORATORY
DETECTION LIMITS.

VALUES PRESENTED IN **BOLD** EXCEED ECMC TABLE 915-1
REGULATORY LIMITS.

VALUES PRESENTED WITH AN ASTERISK (*) EXCEED ECMC
TABLE 915-1 GROUNDWATER SOIL SCREENING LEVELS, ONLY.

ECMC = ENERGY & CARBON MANAGEMENT COMMISSION

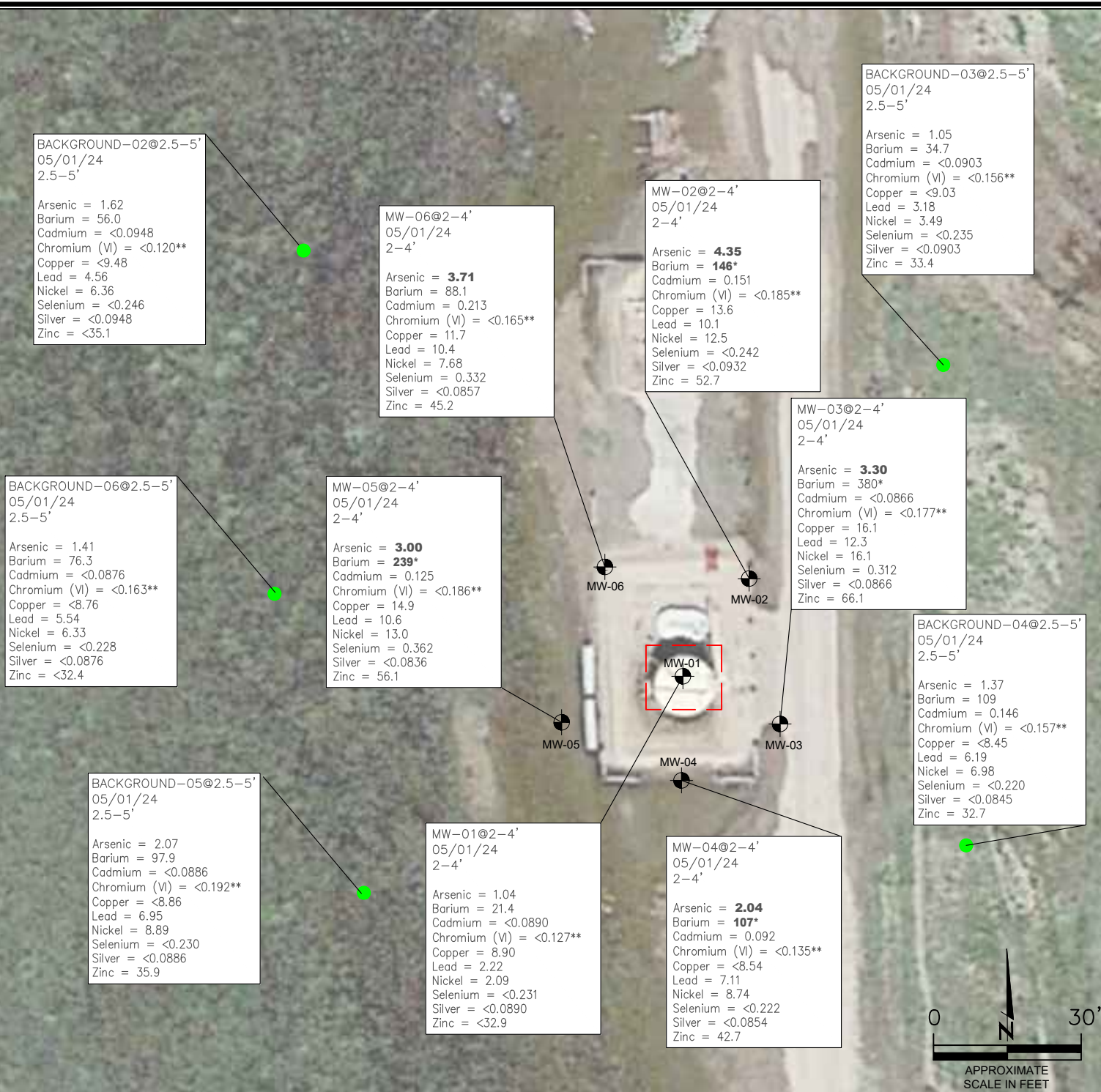
POLYCYCLIC AROMATIC HYDROCARBONS MAP
LOUSTELET T5N-R64W-S15 L01 TANK BATTERY
HISTORICAL RELEASE
40.395146 / -104.536147
SE¼ SW¼ SEC.15 T5N R64W 6PM
WELD COUNTY, COLORADO
LOCATION ID 447668
REMEDATION # 23570

FIGURE NO.
4

DRAWN BY:
RS



EAGLE
ENVIRONMENTAL
CONSULTING, LLC
8000 W 44th Ave, Wheat Ridge, CO 80033
Ph: 303-433-0479 • F: 303-325-5449



LEGEND

- WATER VAULT ASSESSMENT BOUNDARIES
- MONITORING WELL LOCATIONS
- BACKGROUND SAMPLE LOCATIONS

PARAMETERS

SAMPLE LOCATION
DATE SAMPLE COLLECTED
APPROXIMATE DEPTH
Arsenic = (mg/kg)
Barium = (mg/kg)
Cadmium = (mg/kg)
Chromium (VI) = (mg/kg)
Copper = (mg/kg)
Lead = (mg/kg)
Nickel = (mg/kg)
Selenium = (mg/kg)
Silver = (mg/kg)
Zinc = (mg/kg)

mg/kg = MILLIGRAMS PER KILOGRAM

(NS) = NOT SAMPLED

NOTES:

VALUES PRESENTED WITH A LESS THAN SYMBOL (<) DID NOT CONTAIN CONCENTRATIONS AT/OR ABOVE LABORATORY REPORTING LIMITS AND/OR MINIMUM DETECTION LIMITS.

ELEVATED METALS ARE NATURALLY OCCURRING IN COLORADO. LOCAL CLEAN-UP LEVELS ARE 1.25*BACKGROUND CONCENTRATIONS WHERE APPLICABLE.

VALUES PRESENTED IN **BOLD** EXCEED ECMC TABLE 915-1 REGULATORY LIMITS AND APPLICABLE LOCAL CLEAN-UP LEVELS.

*VALUES EXCEED ECMC TABLE 915-1 PROTECTION OF GROUNDWATER SOIL SCREENING LEVELS, ONLY.

**ACHIEVABLE PRACTICAL QUANTITATIVE LIMITS FOR HEXAVALENT CHROMIUM (Cr VI) IN SOILS IS IN THE RANGE OF 0.1 TO 1 mg/kg.

ECMC = ENERGY & CARBON MANAGEMENT COMMISSION

MONITORING WELL METALS IN SOIL MAP
LOUSTELET T5N-R64W-S15 L01 TANK BATTERY
HISTORICAL RELEASE
40.395146 / -104.536147
SE¼ SW¼ SEC.15 T5N R64W 6PM
WELD COUNTY, COLORADO
LOCATION ID 447668
REMEDATION # 23570

FIGURE NO.
5

DRAWN BY:
RS



EAGLE
ENVIRONMENTAL
CONSULTING, LLC
8000 W 44th Ave, Wheat Ridge, CO 80033
Ph: 303-433-0479 • F: 303-325-5449

LEGEND

- WATER VAULT ASSESSMENT BOUNDARIES
- MONITORING WELL LOCATIONS

PARAMETERS

GROUNDWATER SAMPLE LOCATION
DATE
B = BENZENE (µg/L)
T = TOLUENE (µg/L)
E = ETHYLBENZENE (µg/L)
X = TOTAL XYLENES (µg/L)
N = NAPHTHALENE (µg/L)
1,2,4-TMB = 1,2,4-TRIMETHYLBENZENE (µg/L)
1,3,5-TMB = 1,3,5-TRIMETHYLBENZENE (µg/L)
C = CHLORIDE (mg/L)
S = SULFATE (mg/L)
TDS = TOTAL DISSOLVED SOLIDS (mg/L)

µg/L = MICROGRAMS PER LITER

NOTES:
INORGANIC GROUNDWATER SAMPLES WERE COLLECTED 05/02/24.

THE GROUNDWATER INORGANIC PARAMETERS IN MONITORING WELL MW-03 WAS USED IN THE DETERMINATION OF "LOCAL BACKGROUND" LEVELS AT THE SITE.

VALUES PRESENTED WITH A LESS THAN SYMBOL (<) DID NOT CONTAIN CONCENTRATIONS AT OR ABOVE THE LABORATORY REPORTING LIMIT

VALUES PRESENTED IN **BOLD** EXCEED THE ECMC TABLE 915-1 REGULATORY LIMITS FOR THAT COMPOUND

ECMC = ENERGY & CARBON MANAGEMENT COMMISSION

GROUNDWATER ANALYTICAL MAP (05/02/24)

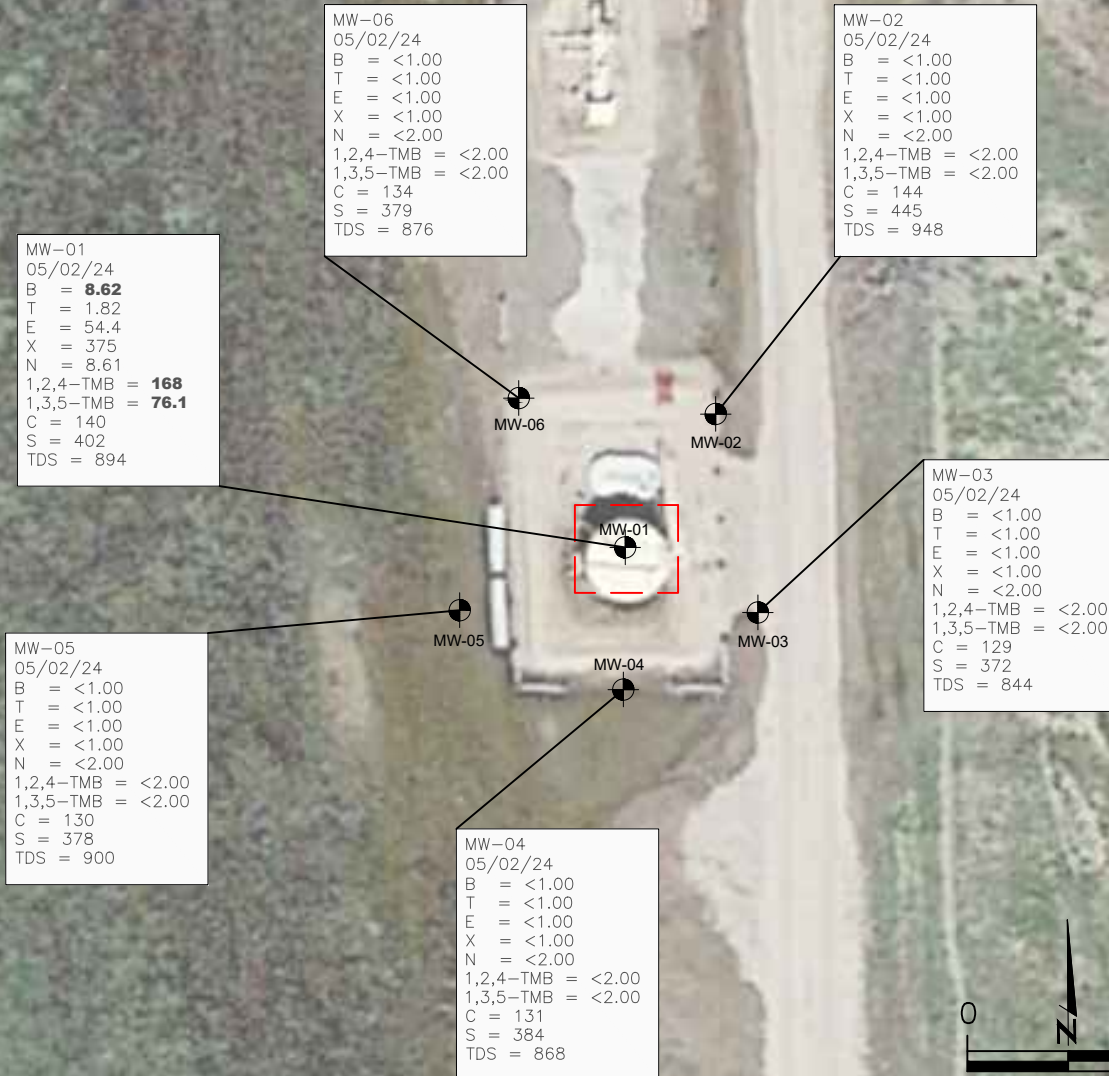
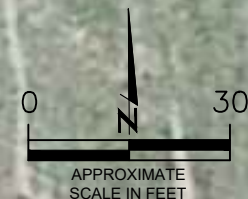
LOUSTELET T5N-R64W-S15 L01 TANK BATTERY
HISTORICAL RELEASE
40.395146 / -104.536147
SE¼ SW¼ SEC.15 T5N R64W 6PM
WELD COUNTY, COLORADO
REMEDATION # 23570



FIGURE NO.
6

DRAWN BY:
RS



EAGLE
ENVIRONMENTAL
CONSULTING, LLC
8000 W 44th Ave, Wheat Ridge, CO 80033
Ph: 303-433-0479 • F: 303-325-5449

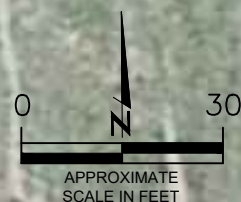
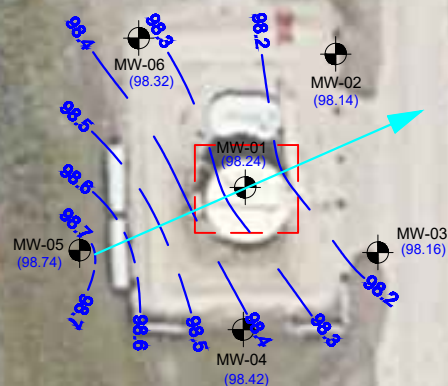


- LEGEND**
- WATER VAULT ASSESSMENT BOUNDARIES
 -  MONITORING WELL LOCATIONS
 - (89.25) RELATIVE GROUNDWATER ELEVATION (FT.)
 - INFERRED GROUNDWATER ELEVATION CONTOUR (FT.)
 -  APPROXIMATE GROUNDWATER FLOW DIRECTION

FT. = FEET

NOTE:
GROUNDWATER ELEVATION DATA WAS COLLECTED ON 5/2/24.

BACKGROUND: GOOGLE EARTH AERIAL IMAGERY JUNE 2016



GROUNDWATER CONTOUR MAP
(05/02/24)

LOUSTELET T5N-R64W-S15 L01 TANK BATTERY
HISTORICAL RELEASE
40.395146 / -104.536147
SE¼ SW¼ SEC.15 T5N R64W 6PM
WELD COUNTY, COLORADO
REMEDATION # 23570

FIGURE NO.
7

DRAWN BY:
RS



EAGLE
ENVIRONMENTAL
CONSULTING, LLC
8000 W 44th Ave, Wheat Ridge, CO 80033
Ph: 303-433-0479 • F: 303-325-5449



TABLES

Table 1: Field Data Summary Table

Table 2: Summary of Volatile Organic Soil Chemistry Data

Table 3: Summary of PAHs Soil Chemistry Data

Table 4: Summary of Soil Suitability for Reclamation

Table 5: Summary of Metals in Soil Chemistry Data

Table 6: Summary of Groundwater Elevation Data and Organic Chemistry Data

Table 7: Summary of Inorganic Groundwater Chemistry Data

TABLE 1
FIELD DATA SUMMARY TABLE
LOUSTELET T5N-R64W-S15 L01 TANK BATTERY
HISTORICAL RELEASE
40.395041 / -104.536099
SE¼ SW¼ S15 T5N R64W
WELD COUNTY, COLORADO
LOCATION ID 447669
REM # 23570

Sample ID	Sample Date	Depth	GPS Data		PDOP Value	VOC Concentration (ppm)
			Latitude/Longitude			
MW-01 @ 2-4'	5/1/2024	2-4'	40.395030	-104.536162	Y	1,573
MW-02 @ 2-4'	5/1/2024	2-4'	40.395098	-104.536113	Y	3.2
MW-03 @ 2-4'	5/1/2024	2-4'	40.395014	-104.536068	Y	0.8
MW-04 @ 2-4'	5/1/2024	2-4'	40.394960	-104.536150	Y	3.1
MW-05 @ 2-4'	5/1/2024	2-4'	40.395003	-104.536238	Y	2.9
MW-06 @ 2-4'	5/1/2024	2-4'	40.395094	-104.536213	Y	3.4
Background-02 @ 2.5-5'	5/1/2024	2.5-5'	40.395262	-104.536406	Y	1.2
Background-03 @ 2.5-5'	5/1/2024	2.5-5'	40.395185	-104.536197	Y	0.9
Background-04 @ 2.5-5'	5/1/2024	2.5-5'	40.395185	-104.536197	Y	0.7
Background-05 @ 2.5-5'	5/1/2024	2.5-5'	40.395023	-104.536378	Y	0.6
Background-06 @ 2.5-5'	5/1/2024	2.5-5'	40.395255	-104.536281	Y	0.5
SB-01 @ 3-4'	5/1/2024	3-4'	40.395245	-104.536191	Y	2.8
SB-01 @ 4-5'	5/1/2024	4-5'	40.395245	-104.536191	Y	2.1
SB-02 @ 3-4'	5/1/2024	3-4'	40.395326	-104.536189	Y	0.5
SB-02 @ 4-5'	5/1/2024	4-5'	40.395326	-104.536189	Y	0.0
SB-03 @ 3-4'	5/1/2024	3-4'	40.395243	-104.536082	Y	1.8
SB-03 @ 4-5'	5/1/2024	4-5'	40.395243	-104.536082	Y	0.1
SB-04 @ 3-4'	5/1/2024	3-4'	40.395162	-104.536181	Y	3.2
SB-04 @ 4-5'	5/1/2024	4-5'	40.395162	-104.536181	Y	2.8
SB-05 @ 3-4'	5/1/2024	3-4'	40.395241	-104.536297	Y	2.4
SB-05 @ 4-5'	5/1/2024	4-5'	40.395241	-104.536297	Y	0.4

1. Global Positioning System (GPS) data is provided in decimal degrees using North American Datum (NAD) 83 UTMZone 13 North.

2. Volatile organic compound (VOC) concentrations are measured in the field using a photoionization detector (PID).

PDOP = Position Dilution of Precision

ppm = Parts per million

in. = Inches

ft. = Feet

bgs = Below ground surface

= Source material characterization sample, excavated and transported off site for disposal.

= Material excavated and transported off site for disposal.



TABLE 2
SUMMARY OF VOLATILE ORGANIC SOIL CHEMISTRY DATA
LOUSTELET T5N-R64W-S15 L01 TANK BATTERY
HISTORICAL RELEASE
40.395041 / -104.536099
SE¼ SW¼ S15 T5N R64W
WELD COUNTY, COLORADO
LOCATION ID 447669
REM # 23570

Sample ID	Sample Date	Depth (ft)	Benzene (mg/kg)	Toluene (mg/kg)	Ethyl-Benzene (mg/kg)	Xylenes (mg/kg)	1,2,4- Trimethyl- Benzene (mg/kg)	1,3,5- Trimethyl- Benzene (mg/kg)	Naphthalene (mg/kg)	TPH (mg/kg)	TPH GRO (mg/kg)	TPH DRO (mg/kg)	TPH ORO (mg/kg)
ECMC Table 915-1 Limits (Residential SSL)			1.2	490	5.8	58	30	27	2	500	500**		
ECMC Table 915-1 Limits (Protection of Groundwater SSL)			0.0026	0.69	0.78	9.9	0.0081	0.0087	0.0038	500	500**		
MW-01 @ 2-4'	5/1/2024	2-4'	0.00466	0.0235	0.887	14.1	8.33	3.12	0.0257	6,459	1900	3730	829
MW-02 @ 2-4'	5/1/2024	2-4'	<0.00200	<0.00200	<0.00380	<0.00200	<0.00200	<0.00200	<0.00380	<500	<0.200	<25.0	<100
MW-03 @ 2-4'	5/1/2024	2-4'	<0.00200	<0.00200	<0.00380	<0.00200	<0.00200	<0.00200	<0.00380	<500	<0.200	<25.0	<100
MW-04 @ 2-4'	5/1/2024	2-4'	<0.00200	<0.00200	<0.00380	<0.00200	<0.00200	<0.00200	<0.00380	<500	<0.200	<25.0	<100
MW-05 @ 2-4'	5/1/2024	2-4'	<0.00200	<0.00200	<0.00380	<0.00200	<0.00200	<0.00200	<0.00380	<500	<0.200	<25.0	<100
MW-06 @ 2-4'	5/1/2024	2-4'	<0.00200	<0.00200	<0.00380	<0.00200	<0.00200	<0.00200	<0.00380	<500	<0.200	<25.0	<100

1. **Bold** values exceed the ECMC Table 915-1 limit(s)

2. Pink & blue highlighted soil analytical values indicate an exceedance of the referenced soil screening level (SSL)

3. * Indicates laboratory minimum detection limit in excess of SSL

4. ** Summation of GRO+DRO+ORO must be less than 500 mg/kg

NA - Not analyzed

= Source material characterization sample, excavated and transported off site for disposal.

= Material excavated and transported off site for disposal.



TABLE 3
SUMMARY OF POLYCYCLIC AROMATIC HYDROCARBON SOIL CHEMISTRY DATA
LOUSTELET T5N-R64W-S15 L01 TANK BATTERY
HISTORICAL RELEASE
40.395041 / -104.536099
SE¼ SW¼ S15 T5N R64W
WELD COUNTY, COLORADO
LOCATION ID 447669
REM # 23570

Sample ID	Sample Date	Depth (ft)	Acenaphthene (mg/kg)	Anthracene (mg/kg)	Benzo (a) Anthracene (mg/kg)	Benzo (a) Pyrene (mg/kg)	Benzo (b) Fluoranthene (mg/kg)	Benzo (k) Fluoranthene (mg/kg)	Chrysene (mg/kg)	Dibenzo (a,h) Anthracene (mg/kg)	Fluoranthene (mg/kg)	Fluorene (mg/kg)	Indeno (1,2,3- cd) Pyrene (mg/kg)	Pyrene (mg/kg)	1-Methyl - Naphthalene (mg/kg)	2-Methyl- Naphthalene (mg/kg)
ECMC Table 915-1 Limits (Residential SSL)			360	1800	1.1	0.11	1.1	11	110	0.11	240	240	1.1	180	18	24
ECMC Table 915-1 Limits (Protection of Groundwater SSL)			0.55	5.8	0.011	0.24	0.3	2.9	9	0.096	8.9	0.54	0.98	1.3	0.006	0.019
MW-01 @ 2-4'	5/1/2024	2-4'	0.506	0.057	<0.005	<0.020	<0.020	<0.020	0.047	<0.020	<0.020	0.683	<0.020	0.042	1.31	1.63
MW-02 @ 2-4'	5/1/2024	2-4'	<0.020	<0.020	<0.005	<0.020	<0.020	<0.020	<0.020	<0.020	<0.020	<0.020	<0.020	<0.020	<0.002	<0.002*
MW-03 @ 2-4'	5/1/2024	2-4'	<0.020	<0.020	<0.005	<0.020	<0.020	<0.020	<0.020	<0.020	<0.020	<0.020	<0.020	<0.020	<0.002	<0.002*
MW-04 @ 2-4'	5/1/2024	2-4'	<0.020	<0.020	<0.005	<0.020	<0.020	<0.020	<0.020	<0.020	<0.020	<0.020	<0.020	<0.020	<0.002	<0.002*
MW-05 @ 2-4'	5/1/2024	2-4'	<0.020	<0.020	<0.005	<0.020	<0.020	<0.020	<0.020	<0.020	<0.020	<0.020	<0.020	<0.020	<0.002	<0.002*
MW-06 @ 2-4'	5/1/2024	2-4'	<0.020	<0.020	<0.005	<0.020	<0.020	<0.020	<0.020	<0.020	<0.020	<0.020	<0.020	<0.020	<0.002	<0.002*

1. **Bold** values exceed the ECMC Table 915-1 limit(s)
2. Pink & blue highlighted soil analytical values indicate an exceedance of the referenced soil screening level (SSL)
3. * Indicates laboratory minimum detection limit in excess of SSL

NA - Not analyzed

= Source material characterization sample, excavated and transported off site for disposal.
 = Material excavated and transported off site for disposal.



TABLE 4
SUMMARY OF SOIL SUITABILITY FOR RECLAMATION
LOUSTELET T5N-R64W-S15 L01 TANK BATTERY
HISTORICAL RELEASE
40.395041 / -104.536099
SE¼ SW¼ S15 T5N R64W
WELD COUNTY, COLORADO
LOCATION ID 447669
REM # 23570

Sample ID	Sample Date	Depth (ft)	pH (Standard Units)	EC (mmhos/cm)	SAR (Standard Units)	Boron (mg/L)
ECMC Table 915-1 Soil Suitability Limits			6 - 8.3	<4	<6	2
MW-01 @ 2-4'	5/1/2024	2-4'	7.22	NA	NA	NA
MW-02 @ 2-4'	5/1/2024	2-4'	7.88	NA	NA	NA
MW-03 @ 2-4'	5/1/2024	2-4'	7.89	NA	NA	NA
MW-04 @ 2-4'	5/1/2024	2-4'	8.00	NA	NA	NA
MW-05 @ 2-4'	5/1/2024	2-4'	7.99	NA	NA	NA
MW-06 @ 2-4'	5/1/2024	2-4'	8.18	NA	NA	NA
Background-02 @ 2.5-5'	5/1/2024	2.5-5'	8.35	NA	NA	NA
Background-03 @ 2.5-5'	5/1/2024	2.5-5'	8.38	NA	NA	NA
Background-04 @ 2.5-5'	5/1/2024	2.5-5'	8.45	NA	NA	NA
Background-05 @ 2.5-5'	5/1/2024	2.5-5'	8.58	NA	NA	NA
Background-06 @ 2.5-5'	5/1/2024	2.5-5'	8.49	NA	NA	NA
SB-01 @ 3-4'	5/1/2024	3-4'	8.14	NA	NA	NA
SB-01 @ 4-5'	5/1/2024	4-5'	8.30	NA	NA	NA
SB-02 @ 3-4'	5/1/2024	3-4'	8.19	NA	NA	NA
SB-02 @ 4-5'	5/1/2024	4-5'	8.27	NA	NA	NA
SB-03 @ 3-4'	5/1/2024	3-4'	8.18	NA	NA	NA
SB-03 @ 4-5'	5/1/2024	4-5'	8.36	NA	NA	NA
SB-04 @ 3-4'	5/1/2024	3-4'	8.40	NA	NA	NA
SB-04 @ 4-5'	5/1/2024	4-5'	7.76	NA	NA	NA
SB-05 @ 3-4'	5/1/2024	3-4'	8.26	NA	NA	NA
SB-05 @ 4-5'	5/1/2024	4-5'	8.33	NA	NA	NA
Maximum Background Concentration			8.58			
Mean Background Concentration			8.45			

1. **Bold** faced values exceed the ECMC Table 915-1 limit(s)

2. Brown highlighted soil analytical values indicate a regulatory exceedance, but below background concentration.

NA - Not analyzed

= Source material characterization sample, excavated and transported off site for disposal.

= Material excavated and transported off site for disposal.



TABLE 5
SUMMARY OF METALS IN SOIL CHEMISTRY DATA
LOUSTELET T5N-R64W-S15 L01 TANK BATTERY
HISTORICAL RELEASE
40.395041 / -104.536099
SE¼ SW¼ S15 T5N R64W
WELD COUNTY, COLORADO
LOCATION ID 447669
REM # 23570

Sample ID	Sample Date	Depth (ft)	Arsenic (mg/kg)	Barium (mg/kg)	Cadmium (mg/kg)	Chromium (VI) (mg/kg)	Copper (mg/kg)	Lead (mg/kg)	Nickel (mg/kg)	Selenium (mg/kg)	Silver (mg/kg)	Zinc (mg/kg)
ECMC Table 915-1 Limits (Residential SSL)			0.68	15000	71	0.3	3100	400	1500	390	390	23000
ECMC Table 915-1 Limits (Protection of Groundwater SSL)			0.29	82	0.38	0.00067	46	14	26	0.26	0.8	370
MW-01 @ 2-4'	5/1/2024	2-4'	1.04	21.4	<0.0890	<0.127*	<8.90	2.22	2.09	<0.231	<0.0890	<32.9
MW-02 @ 2-4'	5/1/2024	2-4'	4.35	146	0.151	<0.185*	13.6	10.1	12.5	<0.242	<0.0932	52.7
MW-03 @ 2-4'	5/1/2024	2-4'	3.30	380	<0.0866	<0.177*	16.1	12.3	16.1	0.312	<0.0866	66.1
MW-04 @ 2-4'	5/1/2024	2-4'	2.04	107	0.092	<0.135*	<8.54	7.11	8.74	<0.222	<0.0854	42.7
MW-05 @ 2-4'	5/1/2024	2-4'	3.00	239	0.125	<0.186*	14.9	10.6	13.0	0.362	<0.0836	56.1
MW-06 @ 2-4'	5/1/2024	2-4'	3.71	88.1	0.213	<0.165*	11.7	10.4	7.68	0.332	<0.0857	45.2
Background-02 @ 2.5-5'	5/1/2024	2.5-5'	1.62	56.0	<0.0948	<0.120*	<9.48	4.56	6.36	<0.246	<0.0948	<35.1
Background-03 @ 2.5-5'	5/1/2024	2.5-5'	1.05	34.7	<0.0903	<0.156*	<9.03	3.18	3.49	<0.235	<0.0903	33.4
Background-04 @ 2.5-5'	5/1/2024	2.5-5'	1.37	109	0.146	<0.157*	<8.45	6.19	6.98	<0.220	<0.0845	32.7
Background-05 @ 2.5-5'	5/1/2024	2.5-5'	2.07	97.9	<0.0886	<0.192*	<8.86	6.95	8.89	<0.230	<0.0886	35.9
Background-06 @ 2.5-5'	5/1/2024	2.5-5'	1.41	76.3	<0.0876	<0.163*	<8.76	5.54	6.33	<0.228	<0.0876	<32.4
Maximum Background Concentration			2.07	109								
Mean Background Concentration X 1.25			1.88	93.48								

1. **Bold** values exceed the ECMC Table 915-1 limit(s)

2. Red & blue highlighted soil analytical values indicate an exceedance of the referenced soil screening level (SSL)

* Indicates laboratory minimum detection limit in excess of SSL

NA - Not analyzed

= Source material characterization sample, excavated and transported off site for disposal.

= Material excavated and transported off site for disposal.



TABLE 6
SUMMARY OF GROUNDWATER ELEVATION DATA AND ORGANIC CHEMISTRY DATA
LOUSTELET T5N-R64W-S15 L01 TANK BATTERY
HISTORICAL RELEASE
40.395041 / -104.536099
SE¼ SW¼ S15 T5N R64W
WELD COUNTY, COLORADO
LOCATION ID 447669
REM # 23570

Sample ID	Sample Date	Benzene (µg/L)	Toluene (µg/L)	Ethyl-Benzene (µg/L)	Xylenes (µg/L)	Naphthalene (µg/L)	1,2,4- Trimethyl- Benzene (µg/L)	1,3,5- Trimethyl- Benzene (µg/L)	TOC Elevation (ft)	Depth to Groundwater Below TOC (ft)	Depth to Groundwater Below Ground Surface (ft)	Groundwater Elevation (ft)	LNAPL Thickness (ft)
ECMC Table 915-1 Limits		5.0	560	700	1400	140	67	67					
MW-01	05/02/24	8.62	1.82	54.4	375	8.61	168	76.1	99.82	1.58	1.58	98.24	NP
MW-02	05/02/24	<1.00	<1.00	<1.00	<1.00	<2.00	<2.00	<2.00	100	1.68	1.68	98.32	NP
MW-03	05/02/24	<1.00	<1.00	<1.00	<1.00	<2.00	<2.00	<2.00	99.83	1.66	1.66	98.17	NP
MW-04	05/02/24	<1.00	<1.00	<1.00	<1.00	<2.00	<2.00	<2.00	99.58	1.40	1.40	98.18	NP
MW-05	05/02/24	<1.00	<1.00	<1.00	<1.00	<2.00	<2.00	<2.00	99.37	1.08	1.08	98.29	NP
MW-06	05/02/24	<1.00	<1.00	<1.00	<1.00	<2.00	<2.00	<2.00	99.99	1.50	1.50	98.49	NP

1. Bold values exceed the ECMC limit(s)

2. Red highlighted groundwater analytical values indicate a regulatory exceedance

NP - No measurable LNAPL, NA - Not Analyzed, INA - Inaccessible, IW - Insufficient Water, DES - Destroyed



TABLE 7
SUMMARY OF INORGANIC GROUNDWATER CHEMISTRY DATA
LOUSTELET T5N-R64W-S15 L01 TANK BATTERY
HISTORICAL RELEASE
40.395041 / -104.536099
SE¼ SW¼ S15 T5N R64W
WELD COUNTY, COLORADO
LOCATION ID 447669
REM # 23570

Sample ID	Sample Date	Total Dissolved Solids (mg/L)	Chloride Ion (mg/L)	Sulfate Ion (mg/L)
ECMC Table 915-1 Limits		<1.25 x local background	250 or <1.25 x local background	250 or <1.25 x local background
MW-1	5/2/24	894	140	402
MW-02	5/2/24	948	144	445
MW-03	5/2/24	844	129	372
MW-04	5/2/24	868	131	384
MW-05	5/2/24	900	130	378
MW-06	5/2/24	876	134	379
Background Concentration (Current)		1125	163	473

1. Bold values exceed the ECMC limit(s)

2. Blue highlighted groundwater analytical values indicate a regulatory exceedance

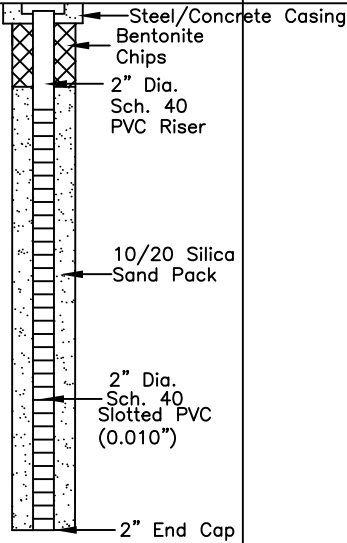
NP - No measurable LNAPL, NA - Not Analyzed, INA - Inaccessible, IW - Insufficient Water, DES - Destroyed





ATTACHMENT A

Soil Boring Logs / Well Completion Diagrams

DEPTH (FT)	LITHOLOGY	SAMPLE				OVM/OVA (PPM)	BLOW COUNT (per 0.5 FT)	DEPTH (FT)	WELL CONSTRUCTION DETAIL	COMMENTS
	DESCRIPTION	GRAPHIC LOG	TYPE	NUMBER	RECOVERY %					
0	(0-2.5') sandy CLAY - brown, moist, fine grained, medium stiff, poorly-graded with ~20% sand, slight plasticity, N/O, N/S	CL	DP	1	90	206.4	N/A			
	(2.5-5') poorly-graded SAND - brown, wet, loose, fine to medium grained, well-graded with trace fines & trace gravel, S/O, BLK/S @~4' - wet					1573				
						N/A				
5	(5-12.5') FLOWING SANDS	SP	DP	2	N/A	N/A	N/A			
						N/A	N/A			
						N/A	N/A			
10			DP	3	N/A	N/A	N/A			
	BoB @ 12.5'									
15										
20										
25										
30										

HA - Hand Auger
DP - Direct Push
HC - Hydrocarbon
BoB - Bottom of Boring
N/O - no odor
N/S - no staining
TOC - top of casing
bgs - below ground surface

START/COMPLETION DATE: 05/01/24

SAND PACK INTERVAL (FEET): 2-12.5

PROJECT: LOUSTELET T5N-R64W-S15 L01 TANK BATTERY

BENTONITE/GROUT INTERVAL (FEET): 0-2

LOGGED BY: I. MCFARLAND / Z. MARTINEZ

WELL SCREEN INTERVAL (FEET): 2.5-12.5

DRILLING COMPANY/EQUIPMENT: EAGLE/GEOPROBE

WELL DIAMETER (INCHES): 2

BORING DEPTH (FEET): 12.5

WELL DEPTH (FEET): 12.5

PID INSTRUMENT: MiniRAE 3000 - PID #10

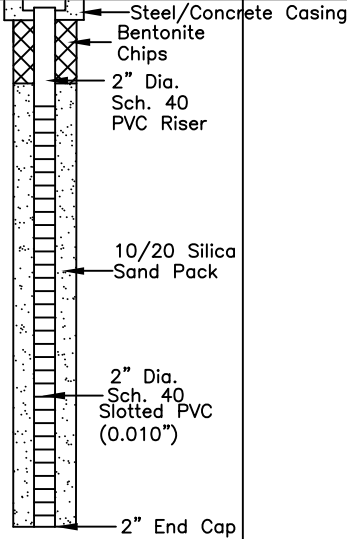
TIME STARTED/COMPLETED: 1053/1115

SAMPLE COLLECTION DEPTH (FT.)/TIME: 2-4/1056



EAGLE
ENVIRONMENTAL
CONSULTING, LLC

8000 W 44th Ave., Wheat Ridge, CO 80033
Ph: 303-433-0479 • F: 303-325-5449

DEPTH (FT)	LITHOLOGY	SAMPLE				OVM/OVA (PPM)	BLOW COUNT (per 0.5 FT)	DEPTH (FT)	WELL CONSTRUCTION DETAIL	COMMENTS
	DESCRIPTION	GRAPHIC LOG	TYPE	NUMBER	RECOVERY %					
0	(0-4') sandy CLAY - brown, moist, fine grained, stiff, poorly-graded with ~10% sand, high plasticity, N/O, N/S	CL	DP	1	75	3.7	N/A			
	(4-5') poorly-graded SAND - brown, wet, loose, fine to medium grained, trace fines & trace gravel, N/O, N/S					3.2				
	@~4' - wet					3.3				
5	(5-12.5') FLOWING SANDS	SP	DP	2	N/A	N/A	N/A	5		
						N/A				
						N/A				
10		DP	3	N/A	N/A	N/A	N/A	10		
						N/A				
						N/A				
	BoB @ 12.5'									
15								15		
20								20		
25								25		
30										

HA - Hand Auger
 DP - Direct Push
 HC - Hydrocarbon
 BoB - Bottom of Boring
 N/O - no odor
 N/S - no staining
 TOC - top of casing
 bgs - below ground surface

START/COMPLETION DATE: 05/01/24

SAND PACK INTERVAL (FEET): 2-12.5

PROJECT: LOUSTELET T5N-R64W-S15 L01 TANK BATTERY

BENTONITE/GROUT INTERVAL (FEET): 0.5-2

LOGGED BY: I. MCFARLAND / Z. MARTINEZ

WELL SCREEN INTERVAL (FEET): 2.5-12.5

DRILLING COMPANY/EQUIPMENT: EAGLE/GEOPROBE

WELL DIAMETER (INCHES): 2

BORING DEPTH (FEET): 12.5

WELL DEPTH (FEET): 12.5

PID INSTRUMENT: MiniRAE 3000 - PID #10

TIME STARTED/COMPLETED: 1343/1405

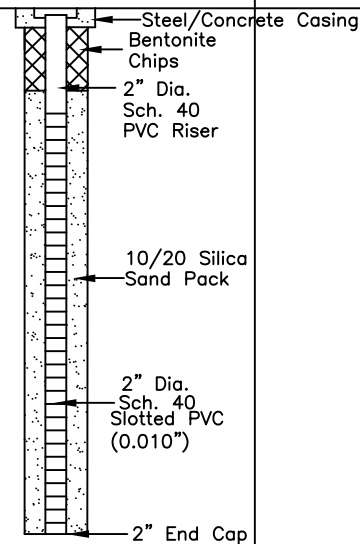
SAMPLE COLLECTION DEPTH (FT.)/TIME: 2-4/1345



EAGLE
 ENVIRONMENTAL
 CONSULTING, LLC

8000 W 44th Ave., Wheat Ridge, CO 80033
 Ph: 303-433-0479 • F: 303-325-5449

DEPTH (FT)	LITHOLOGY	SAMPLE				OVM/OVA (PPM)	BLOW COUNT (per 0.5 FT)	DEPTH (FT)	WELL CONSTRUCTION DETAIL	COMMENTS
	DESCRIPTION	GRAPHIC LOG	TYPE	NUMBER	RECOVERY %					
0	(0-4') sandy CLAY - brown, moist, fine grained, stiff, poorly-graded with ~10% sand, high plasticity, N/O, N/S	CL	DP	1	70	2.4	N/A			
	(4-5') poorly-graded SAND - brown, wet, loose, fine to medium grained, trace fines & trace gravel, N/O, N/S					0.8				
5	@~4' - wet	SP	DP	2	N/A	N/A	N/A	5		
	(5-12.5') FLOWING SANDS									
10		DP		3	N/A	N/A	N/A	10		
	BoB @ 12.5'									
15								15		
20								20		
25								25		
30										



HA - Hand Auger
 DP - Direct Push
 HC - Hydrocarbon
 BoB - Bottom of Boring
 N/O - no odor
 N/S - no staining
 TOC - top of casing
 bgs - below ground surface

START/COMPLETION DATE: 05/01/24

SAND PACK INTERVAL (FEET): 2-12.5

PROJECT: LOUSTELET T5N-R64W-S15 L01 TANK BATTERY

BENTONITE/GROUT INTERVAL (FEET): 0.5-2

LOGGED BY: I. MCFARLAND / Z. MARTINEZ

WELL SCREEN INTERVAL (FEET): 2.5-12.5

DRILLING COMPANY/EQUIPMENT: EAGLE/GEOPROBE

WELL DIAMETER (INCHES): 2

BORING DEPTH (FEET): 12.5

WELL DEPTH (FEET): 12.5

PID INSTRUMENT: MiniRAE 3000 - PID #10

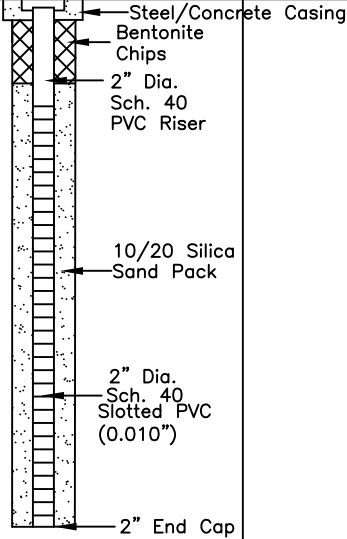
TIME STARTED/COMPLETED: 1125/1139

SAMPLE COLLECTION DEPTH (FT.)/TIME: 2-4/1127



EAGLE
 ENVIRONMENTAL
 CONSULTING, LLC

8000 W 44th Ave., Wheat Ridge, CO 80033
 Ph: 303-433-0479 • F: 303-325-5449

DEPTH (FT)	LITHOLOGY	SAMPLE				OVM/OVA (PPM)	BLOW COUNT (per 0.5 FT)	DEPTH (FT)	WELL CONSTRUCTION DETAIL	COMMENTS
	DESCRIPTION	GRAPHIC LOG	TYPE	NUMBER	RECOVERY %					
0	(0-4') sandy CLAY - brown, moist, fine grained, stiff, poorly-graded with ~10% sand, high plasticity, N/O, N/S	CL	DP	1	80	0.5	N/A		 <p>Steel/Concrete Casing Bentonite Chips 2" Dia. Sch. 40 PVC Riser 10/20 Silica Sand Pack 2" Dia. Sch. 40 Slotted PVC (0.010") 2" End Cap</p>	
	(4-5') poorly-graded SAND - brown, wet, loose, fine to medium grained, trace fines & trace gravel, N/O, N/S					3.1				
	@~4' - wet					3.5				
5	(5-12.5') FLOWING SANDS	SP	DP	2	N/A	N/A	N/A			
10		SP	DP	3	N/A	N/A	N/A			
	BoB @ 12.5'									
15										
20										
25										
30										

HA - Hand Auger
DP - Direct Push
HC - Hydrocarbon
BoB - Bottom of Boring
N/O - no odor
N/S - no staining
TOC - top of casing
bgs - below ground surface

START/COMPLETION DATE: 05/01/24

SAND PACK INTERVAL (FEET): 2-12.5

PROJECT: LOUSTELET T5N-R64W-S15 L01 TANK BATTERY

BENTONITE/GROUT INTERVAL (FEET): 0.5-2

LOGGED BY: I. MCFARLAND / Z. MARTINEZ

WELL SCREEN INTERVAL (FEET): 2.5-12.5

DRILLING COMPANY/EQUIPMENT: EAGLE/GEOPROBE

WELL DIAMETER (INCHES): 2

BORING DEPTH (FEET): 12.5

WELL DEPTH (FEET): 12.5

PID INSTRUMENT: MiniRAE 3000 - PID #10

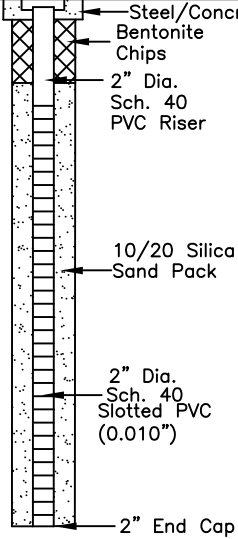
TIME STARTED/COMPLETED: 1144/1155

SAMPLE COLLECTION DEPTH (FT.)/TIME: 2-4/1146



EAGLE
ENVIRONMENTAL
CONSULTING, LLC

8000 W 44th Ave., Wheat Ridge, CO 80033
Ph: 303-433-0479 • F: 303-325-5449

DEPTH (FT)	LITHOLOGY	SAMPLE				OVM/OVA (PPM)	BLOW COUNT (per 0.5 FT)	DEPTH (FT)	WELL CONSTRUCTION DETAIL	COMMENTS
	DESCRIPTION	GRAPHIC LOG	TYPE	NUMBER	RECOVERY %					
0	(0-4') sandy CLAY - brown, moist, fine grained, stiff, poorly-graded with ~10% sand, high plasticity, N/O, N/S	CL	DP	1	80	4.2	N/A			
	(4-5') poorly-graded SAND - brown, wet, loose, fine to medium grained, trace fines & trace gravel, N/O, N/S					2.9				
	@~4' - wet					2.7				
5	(5-12.5') FLOWING SANDS	SP	DP	2	N/A	N/A	N/A			
						N/A				
10			DP	3	N/A	N/A	N/A			
	BoB @ 12.5'									
15										
20										
25										
30										

HA - Hand Auger
 DP - Direct Push
 HC - Hydrocarbon
 BoB - Bottom of Boring
 N/O - no odor
 N/S - no staining
 TOC - top of casing
 bgs - below ground surface

START/COMPLETION DATE: 05/01/24

SAND PACK INTERVAL (FEET): 2-12.5

PROJECT: LOUSTELET T5N-R64W-S15 L01 TANK BATTERY

BENTONITE/GROUT INTERVAL (FEET): 0.5-2

LOGGED BY: I. MCFARLAND / Z. MARTINEZ

WELL SCREEN INTERVAL (FEET): 2.5-12.5

DRILLING COMPANY/EQUIPMENT: EAGLE/GEOPROBE

WELL DIAMETER (INCHES): 2

BORING DEPTH (FEET): 12.5

WELL DEPTH (FEET): 12.5

PID INSTRUMENT: MiniRAE 3000 - PID #10

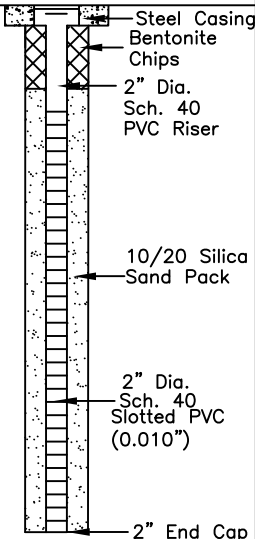
TIME STARTED/COMPLETED: 1203/1230

SAMPLE COLLECTION DEPTH (FT.)/TIME: 2-4/1205



EAGLE
 ENVIRONMENTAL
 CONSULTING, LLC

8000 W 44th Ave., Wheat Ridge, CO 80033
 Ph: 303-433-0479 • F: 303-325-5449

DEPTH (FT)	LITHOLOGY	SAMPLE				OVM/OVA (PPM)	BLOW COUNT (per 0.5 FT)	DEPTH (FT)	WELL CONSTRUCTION DETAIL	COMMENTS
	DESCRIPTION	GRAPHIC LOG	TYPE	NUMBER	RECOVERY %					
0	(0-4') sandy CLAY - brown, moist, fine grained, stiff, poorly-graded with ~10% sand, high plasticity, N/O, N/S	CL	DP	1	70	3.4	N/A		 <p>Steel Casing Bentonite Chips 2" Dia. Sch. 40 PVC Riser 10/20 Silica Sand Pack 2" Dia. Sch. 40 Slotted PVC (0.010") 2" End Cap</p>	
	(4-5') poorly-graded SAND - brown, wet, very loose, fine to medium grained, trace fines & trace gravel, N/O, N/S					3.4				
	@~4' - wet					4.1				
5	(5-12.5') FLOWING SANDS	SP	DP	2	N/A	N/A	N/A	5		
						N/A				
						N/A				
10		SP	DP	3	N/A	N/A	N/A	10		
						N/A				
						N/A				
	BoB @ 12.5'									
15								15		
20								20		
25								25		
30										

HA - Hand Auger
DP - Direct Push
HC - Hydrocarbon
BoB - Bottom of Boring
N/O - no odor
N/S - no staining
TOC - top of casing
bgs - below ground surface

START/COMPLETION DATE: 05/01/24

SAND PACK INTERVAL (FEET): 2-12.5

PROJECT: LOUSTELET T5N-R64W-S15 L01 TANK BATTERY

BENTONITE/GROUT INTERVAL (FEET): 0.5-2

LOGGED BY: I. MCFARLAND / Z. MARTINEZ

WELL SCREEN INTERVAL (FEET): 2.5-12.5

DRILLING COMPANY/EQUIPMENT: EAGLE/GEOPROBE

WELL DIAMETER (INCHES): 2

BORING DEPTH (FEET): 12.5

WELL DEPTH (FEET): 12.5

PID INSTRUMENT: MiniRAE 3000 - PID #10

TIME STARTED/COMPLETED: 1235/1330

SAMPLE COLLECTION DEPTH (FT.)/TIME: 2-4/1237



EAGLE
ENVIRONMENTAL
CONSULTING, LLC

8000 W 44th Ave., Wheat Ridge, CO 80033
Ph: 303-433-0479 • F: 303-325-5449

Boring Log/Well Completion Diagram:

SB-01

PAGE 1 OF 1

DEPTH (FT)	LITHOLOGY	SAMPLE				OVM/OVA (PPM)	BLOW COUNT (per 0.5 FT)	DEPTH (FT)	WELL CONSTRUCTION DETAIL	COMMENTS
	DESCRIPTION	GRAPHIC LOG	TYPE	NUMBER	RECOVERY %					
0	(0-4') sandy CLAY - brown, moist, fine grained, medium stiff, poorly-graded with ~10% sand, medium plasticity, N/O, N/S	CL	DP	1	70	1.8	N/A			
	@~4' - wet					2.8				
5	(4-5') clayey SAND - brown, wet, loose, fine to medium grained, poorly-graded with <10% clay, N/O, N/S	SP				2.1				
5	BoB @ 5'							5		
10								10		
15								15		
20								20		
25								25		
30										

HA - Hand Auger
DP - Direct Push
HC - Hydrocarbon
BoB - Bottom of Boring
N/O - no odor
N/S - no staining
TOC - top of casing
bgs - below ground surface

START/COMPLETION DATE: 05/01/24

SAND PACK INTERVAL (FEET): N/A

PROJECT: LOUSTELET T5N-R64W-S15 L01 TANK BATTERY

BENTONITE/GROUT INTERVAL (FEET): N/A

LOGGED BY: I. MCFARLAND / Z. MARTINEZ

WELL SCREEN INTERVAL (FEET): N/A

DRILLING COMPANY/EQUIPMENT: EAGLE/GEOPROBE

WELL DIAMETER (INCHES): N/A

BORING DEPTH (FEET): 5

WELL DEPTH (FEET): N/A

PID INSTRUMENT: MiniRAE 3000 - PID #10

TIME STARTED/COMPLETED: 1420/1425

SAMPLE COLLECTION DEPTH (FT.)/TIME: 3-4/1425 & 4-5/1425



EAGLE
ENVIRONMENTAL
CONSULTING, LLC

8000 W 44th Ave., Wheat Ridge, CO 80033
Ph: 303-433-0479 • F: 303-325-5449

Boring Log/Well Completion Diagram:

SB-02

PAGE 1 OF 1

DEPTH (FT)	LITHOLOGY	SAMPLE				OVM/OVA (PPM)	BLOW COUNT (per 0.5 FT)	DEPTH (FT)	WELL CONSTRUCTION DETAIL	COMMENTS
	DESCRIPTION	GRAPHIC LOG	TYPE	NUMBER	RECOVERY %					
0	(0-4') sandy CLAY - brown, moist, fine grained, medium stiff, poorly-graded with ~10% sand, medium plasticity, N/O, N/S	CL	HA	1	100	1.1	N/A			
	@~4' - wet									
	(4-5') clayey SAND - brown, wet, loose, fine to medium grained, poorly-graded with <10% clay, N/O, N/S	SP				0.5				
5						0.0				
	BoB @ 5'									
10										
15										
20										
25										
30										

HA - Hand Auger
 DP - Direct Push
 HC - Hydrocarbon
 BoB - Bottom of Boring
 N/O - no odor
 N/S - no staining
 TOC - top of casing
 bgs - below ground surface

START/COMPLETION DATE: 05/02/24

SAND PACK INTERVAL (FEET): N/A

PROJECT: LOUSTELET T5N-R64W-S15 L01 TANK BATTERY

BENTONITE/GROUT INTERVAL (FEET): N/A

LOGGED BY: I. MCFARLAND / Z. MARTINEZ

WELL SCREEN INTERVAL (FEET): N/A

DRILLING COMPANY/EQUIPMENT: EAGLE/GEOPROBE

WELL DIAMETER (INCHES): N/A

BORING DEPTH (FEET): 5

WELL DEPTH (FEET): N/A

PID INSTRUMENT: MiniRAE 3000 - PID #10

TIME STARTED/COMPLETED: 1100/1110

SAMPLE COLLECTION DEPTH (FT.)/TIME: 3-4/1110 & 4-5/1110



EAGLE
 ENVIRONMENTAL
 CONSULTING, LLC

8000 W 44th Ave., Wheat Ridge, CO 80033
 Ph: 303-433-0479 • F: 303-325-5449

Boring Log/Well Completion Diagram:

SB-03

PAGE 1 OF 1

DEPTH (FT)	LITHOLOGY	SAMPLE				OVM/OVA (PPM)	BLOW COUNT (per 0.5 FT)	DEPTH (FT)	WELL CONSTRUCTION DETAIL	COMMENTS
	DESCRIPTION	GRAPHIC LOG	TYPE	NUMBER	RECOVERY %					
0	(0-4') sandy CLAY - brown, moist, fine grained, medium stiff, poorly-graded with ~10% sand, medium plasticity, N/O, N/S	CL	HA	1	100	0.0	N/A			
	@~4' - wet									
	(4-5') clayey SAND - brown, wet, loose, fine to medium grained, poorly-graded with <10% clay, N/O, N/S	SP				1.8				
5						0.1				
	BoB @ 5'									
10										
15										
20										
25										
30										

HA - Hand Auger
DP - Direct Push
HC - Hydrocarbon
BoB - Bottom of Boring
N/O - no odor
N/S - no staining
TOC - top of casing
bgs - below ground surface

START/COMPLETION DATE: 05/02/24

SAND PACK INTERVAL (FEET): N/A

PROJECT: LOUSTELET T5N-R64W-S15 L01 TANK BATTERY

BENTONITE/GROUT INTERVAL (FEET): N/A

LOGGED BY: I. MCFARLAND / Z. MARTINEZ

WELL SCREEN INTERVAL (FEET): N/A

DRILLING COMPANY/EQUIPMENT: EAGLE/GEOPROBE

WELL DIAMETER (INCHES): N/A

BORING DEPTH (FEET): 5

WELL DEPTH (FEET): N/A

PID INSTRUMENT: MiniRAE 3000 - PID #10

TIME STARTED/COMPLETED: 1120/1130

SAMPLE COLLECTION DEPTH (FT.)/TIME: 3-4/1130 & 4-5/1130



EAGLE
ENVIRONMENTAL
CONSULTING, LLC

8000 W 44th Ave., Wheat Ridge, CO 80033
Ph: 303-433-0479 • F: 303-325-5449

DEPTH (FT)	LITHOLOGY	SAMPLE				OVM/OVA (PPM)	BLOW COUNT (per 0.5 FT)	DEPTH (FT)	WELL CONSTRUCTION DETAIL	COMMENTS
	DESCRIPTION	GRAPHIC LOG	TYPE	NUMBER	RECOVERY %					
0	(0-4') sandy CLAY - brown, moist, fine grained, medium stiff, poorly-graded with ~10% sand, medium plasticity, N/O, N/S	CL	DP	1	70	2.5	N/A			
	@~4' - wet					3.2				
	(4-5') clayey SAND - brown, wet, loose, fine to medium grained, poorly-graded with <10% clay, N/O, N/S	SP				2.8				
5	BoB @ 5'							5		
10								10		
15								15		
20								20		
25								25		
30										

HA - Hand Auger
 DP - Direct Push
 HC - Hydrocarbon
 BoB - Bottom of Boring
 N/O - no odor
 N/S - no staining
 TOC - top of casing
 bgs - below ground surface

START/COMPLETION DATE: 05/01/24

SAND PACK INTERVAL (FEET): N/A

PROJECT: LOUSTELET T5N-R64W-S15 L01 TANK BATTERY

BENTONITE/GROUT INTERVAL (FEET): N/A

LOGGED BY: I. MCFARLAND / Z. MARTINEZ

WELL SCREEN INTERVAL (FEET): N/A

DRILLING COMPANY/EQUIPMENT: EAGLE/GEOPROBE

WELL DIAMETER (INCHES): N/A

BORING DEPTH (FEET): 5

WELL DEPTH (FEET): N/A

PID INSTRUMENT: MiniRAE 3000 - PID #10

TIME STARTED/COMPLETED: 1410/1415

SAMPLE COLLECTION DEPTH (FT.)/TIME: 3-4/1412 & 4-5/1412



EAGLE
 ENVIRONMENTAL
 CONSULTING, LLC

8000 W 44th Ave., Wheat Ridge, CO 80033
 Ph: 303-433-0479 • F: 303-325-5449

Boring Log/Well Completion Diagram:

SB-05

PAGE 1 OF 1

DEPTH (FT)	LITHOLOGY	SAMPLE				OVM/OVA (PPM)	BLOW COUNT (per 0.5 FT)	DEPTH (FT)	WELL CONSTRUCTION DETAIL	COMMENTS
	DESCRIPTION	GRAPHIC LOG	TYPE	NUMBER	RECOVERY %					
0	(0-4') sandy CLAY - brown, moist, fine grained, medium stiff, poorly-graded with ~10% sand, medium plasticity, N/O, N/S	CL	DP	1	75	2.6	N/A			
	@~4' - wet									
	(4-5') clayey SAND - brown, wet, loose, fine to medium grained, poorly-graded with <10% clay, N/O, N/S	SP				2.4				
5	BoB @ 5'					0.4		5		
10								10		
15								15		
20								20		
25								25		
30										

HA - Hand Auger
DP - Direct Push
HC - Hydrocarbon
BoB - Bottom of Boring
N/O - no odor
N/S - no staining
TOC - top of casing
bgs - below ground surface

START/COMPLETION DATE: 05/01/24

SAND PACK INTERVAL (FEET): N/A

PROJECT: LOUSTELET T5N-R64W-S15 L01 TANK BATTERY

BENTONITE/GROUT INTERVAL (FEET): N/A

LOGGED BY: I. MCFARLAND / Z. MARTINEZ

WELL SCREEN INTERVAL (FEET): N/A

DRILLING COMPANY/EQUIPMENT: EAGLE/GEOPROBE

WELL DIAMETER (INCHES): N/A

BORING DEPTH (FEET): 5

WELL DEPTH (FEET): N/A

PID INSTRUMENT: MiniRAE 3000 - PID #10

TIME STARTED/COMPLETED: 1415/1420

SAMPLE COLLECTION DEPTH (FT.)/TIME: 3-4/1420 & 4-5/1420



EAGLE
ENVIRONMENTAL
CONSULTING, LLC

8000 W 44th Ave., Wheat Ridge, CO 80033
Ph: 303-433-0479 • F: 303-325-5449

Boring Log/Well Completion Diagram:

BG-02

PAGE 1 OF 1

DEPTH (FT)	LITHOLOGY	SAMPLE				OVM/OVA (PPM)	BLOW COUNT (per 0.5 FT)	DEPTH (FT)	WELL CONSTRUCTION DETAIL	COMMENTS
	DESCRIPTION	GRAPHIC LOG	TYPE	NUMBER	RECOVERY %					
0	(0-4') sandy CLAY - brown, moist, fine grained, medium stiff, poorly-graded with ~10% sand, medium plasticity, N/O, N/S	CL	HA	1	100	0.9	N/A			
	@~4' - wet					1.2				
5	(4-5') clayey SAND - brown, wet, loose, fine to medium grained, poorly-graded with 10% clay, N/O, N/S	SP								
	BoB @ 5'									
10										
15										
20										
25										
30										

HA - Hand Auger
 DP - Direct Push
 HC - Hydrocarbon
 BoB - Bottom of Boring
 N/O - no odor
 N/S - no staining
 TOC - top of casing
 bgs - below ground
 surface

START/COMPLETION DATE: 05/02/24

SAND PACK INTERVAL (FEET): N/A

PROJECT: LOUSTELET T5N-R64W-S15 L01 TANK BATTERY

BENTONITE/GROUT INTERVAL (FEET): N/A

LOGGED BY: I. MCFARLAND / Z. MARTINEZ

WELL SCREEN INTERVAL (FEET): N/A

DRILLING COMPANY/EQUIPMENT: EAGLE/GEOPROBE

WELL DIAMETER (INCHES): N/A

BORING DEPTH (FEET): 5

WELL DEPTH (FEET): N/A

PID INSTRUMENT: MiniRAE 3000 - PID #10

TIME STARTED/COMPLETED: 1140/1150

SAMPLE COLLECTION DEPTH (FT.)/TIME: 2.5-5/1147



EAGLE
 ENVIRONMENTAL
 CONSULTING, LLC

8000 W 44th Ave., Wheat Ridge, CO 80033
 Ph: 303-433-0479 • F: 303-325-5449

DEPTH (FT)	LITHOLOGY	SAMPLE				OVM/OVA (PPM)	BLOW COUNT (per 0.5 FT)	DEPTH (FT)	WELL CONSTRUCTION DETAIL	COMMENTS
	DESCRIPTION	GRAPHIC LOG	TYPE	NUMBER	RECOVERY %					
0	(0-4') sandy CLAY - brown, moist, fine grained, medium stiff, poorly-graded with ~10% sand, medium plasticity, N/O, N/S	CL	HA	1	100	0.9	N/A			
	@~4' - wet					0.9				
5	(4-5') clayey SAND - brown, wet, loose, fine to medium grained, poorly-graded with 10% clay, N/O, N/S	SP						5		
	BoB @ 5'									
10								10		
15								15		
20								20		
25								25		
30										

HA - Hand Auger
 DP - Direct Push
 HC - Hydrocarbon
 BoB - Bottom of Boring
 N/O - no odor
 N/S - no staining
 TOC - top of casing
 bgs - below ground
 surface

START/COMPLETION DATE: 05/02/24

SAND PACK INTERVAL (FEET): N/A

PROJECT: LOUSTELET T5N-R64W-S15 L01 TANK BATTERY

BENTONITE/GROUT INTERVAL (FEET): N/A

LOGGED BY: I. MCFARLAND / Z. MARTINEZ

WELL SCREEN INTERVAL (FEET): N/A

DRILLING COMPANY/EQUIPMENT: EAGLE/GEOPROBE

WELL DIAMETER (INCHES): N/A

BORING DEPTH (FEET): 5

WELL DEPTH (FEET): N/A

PID INSTRUMENT: MiniRAE 3000 - PID #10

TIME STARTED/COMPLETED: 1205/1215

SAMPLE COLLECTION DEPTH (FT.)/TIME: 2.5-5/1212



EAGLE
 ENVIRONMENTAL
 CONSULTING, LLC

8000 W 44th Ave., Wheat Ridge, CO 80033
 Ph: 303-433-0479 • F: 303-325-5449

DEPTH (FT)	LITHOLOGY	SAMPLE				OVM/OVA (PPM)	BLOW COUNT (per 0.5 FT)	DEPTH (FT)	WELL CONSTRUCTION DETAIL	COMMENTS
	DESCRIPTION	GRAPHIC LOG	TYPE	NUMBER	RECOVERY %					
0	(0-4') sandy CLAY - brown, moist, fine grained, medium stiff, poorly-graded with ~10% sand, medium plasticity, N/O, N/S	CL	HA	1	100	0.5	N/A			
	@~4' - wet					0.7				
5	(4-5') clayey SAND - brown, wet, loose, fine to medium grained, poorly-graded with <10% clay, N/O, N/S	SP								
	BoB @ 5'									
10										
15										
20										
25										
30										

HA - Hand Auger
 DP - Direct Push
 HC - Hydrocarbon
 BoB - Bottom of Boring
 N/O - no odor
 N/S - no staining
 TOC - top of casing
 bgs - below ground surface

START/COMPLETION DATE: 05/02/24

SAND PACK INTERVAL (FEET): N/A

PROJECT: LOUSTELET T5N-R64W-S15 L01 TANK BATTERY

BENTONITE/GROUT INTERVAL (FEET): N/A

LOGGED BY: I. MCFARLAND / Z. MARTINEZ

WELL SCREEN INTERVAL (FEET): N/A

DRILLING COMPANY/EQUIPMENT: EAGLE/GEOPROBE

WELL DIAMETER (INCHES): N/A

BORING DEPTH (FEET): 5

WELL DEPTH (FEET): N/A

PID INSTRUMENT: MiniRAE 3000 - PID #10

TIME STARTED/COMPLETED: 1220/1230

SAMPLE COLLECTION DEPTH (FT.)/TIME: 2.5-5/1227



EAGLE
 ENVIRONMENTAL
 CONSULTING, LLC

8000 W 44th Ave., Wheat Ridge, CO 80033
 Ph: 303-433-0479 • F: 303-325-5449

Boring Log/Well Completion Diagram:

BG-05

PAGE 1 OF 1

DEPTH (FT)	LITHOLOGY	SAMPLE				OVM/OVA (PPM)	BLOW COUNT (per 0.5 FT)	DEPTH (FT)	WELL CONSTRUCTION DETAIL	COMMENTS
	DESCRIPTION	GRAPHIC LOG	TYPE	NUMBER	RECOVERY %					
0	(0-4') sandy CLAY - brown, moist, fine grained, medium stiff, poorly-graded with ~10% sand, medium plasticity, N/O, N/S	CL	HA	1	100	0.8	N/A			
5	@~4' - wet (4-5') clayey SAND - brown, wet, loose, fine to medium grained, poorly-graded with <10% clay, N/O, N/S	SP				0.6				
5	BoB @ 5'							5		
10								10		
15								15		
20								20		
25								25		
30										

HA - Hand Auger
DP - Direct Push
HC - Hydrocarbon
BoB - Bottom of Boring
N/O - no odor
N/S - no staining
TOC - top of casing
bgs - below ground surface

START/COMPLETION DATE: 05/02/24

SAND PACK INTERVAL (FEET): N/A

PROJECT: LOUSTELET T5N-R64W-S15 L01 TANK BATTERY

BENTONITE/GROUT INTERVAL (FEET): N/A

LOGGED BY: I. MCFARLAND / Z. MARTINEZ

WELL SCREEN INTERVAL (FEET): N/A

DRILLING COMPANY/EQUIPMENT: EAGLE/GEOPROBE

WELL DIAMETER (INCHES): N/A

BORING DEPTH (FEET): 5

WELL DEPTH (FEET): N/A

PID INSTRUMENT: MiniRAE 3000 - PID #10

TIME STARTED/COMPLETED: 1235/1245

SAMPLE COLLECTION DEPTH (FT.)/TIME: 2.5-5/1243



EAGLE
ENVIRONMENTAL
CONSULTING, LLC

8000 W 44th Ave., Wheat Ridge, CO 80033
Ph: 303-433-0479 • F: 303-325-5449

Boring Log/Well Completion Diagram:

BG-06

PAGE 1 OF 1

DEPTH (FT)	LITHOLOGY	SAMPLE				OVM/OVA (PPM)	BLOW COUNT (per 0.5 FT)	DEPTH (FT)	WELL CONSTRUCTION DETAIL	COMMENTS
	DESCRIPTION	GRAPHIC LOG	TYPE	NUMBER	RECOVERY %					
0	(0-4') sandy CLAY - brown, moist, fine grained, medium stiff, poorly-graded with ~10% sand, medium plasticity, N/O, N/S	CL	HA	1	100	0.5	N/A			
	@~4' - wet									
	(4-5') clayey SAND - brown, wet, loose, fine to medium grained, poorly-graded with <10% clay, N/O, N/S	SP				0.5				
5	BoB @ 5'							5		
10								10		
15								15		
20								20		
25								25		
30										

HA - Hand Auger
 DP - Direct Push
 HC - Hydrocarbon
 BoB - Bottom of Boring
 N/O - no odor
 N/S - no staining
 TOC - top of casing
 bgs - below ground
 surface

START/COMPLETION DATE: 05/02/24

SAND PACK INTERVAL (FEET): N/A

PROJECT: LOUSTELET T5N-R64W-S15 L01 TANK BATTERY

BENTONITE/GROUT INTERVAL (FEET): N/A

LOGGED BY: I. MCFARLAND / Z. MARTINEZ

WELL SCREEN INTERVAL (FEET): N/A

DRILLING COMPANY/EQUIPMENT: EAGLE/GEOPROBE

WELL DIAMETER (INCHES): N/A

BORING DEPTH (FEET): 5

WELL DEPTH (FEET): N/A

PID INSTRUMENT: MiniRAE 3000 - PID #10

TIME STARTED/COMPLETED: 1150/1200

SAMPLE COLLECTION DEPTH (FT.)/TIME: 2.5-5/1157



EAGLE
 ENVIRONMENTAL
 CONSULTING, LLC

8000 W 44th Ave., Wheat Ridge, CO 80033
 Ph: 303-433-0479 • F: 303-325-5449