

FERGUSON 10-9-5-45

API # 125-02376

Loc. # 302959

FIELD NAME BALLYNEAL - #1970

Spud Date 4/4/2004

Basin DENVER - JULESBURG

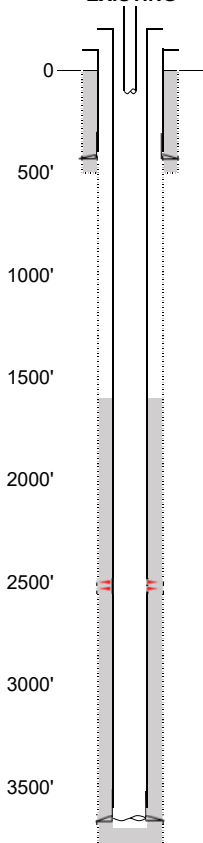
Location NWSE 9 5N 45W 6

Elevation GL (ft) 3813

Elevation KB (ft) 3819

TD (ft) 3750

PBTD (ft) 3635

Formation Tops**EXISTING**Existing Casing and Cement Coverage

SURF: Size: 7", Hole Size: 9.875 in.

Depth: 432 ft., Weight: UNK

Cement: 195 sx, Top: 0 ft., Method: Vis

Deepest DWR w/in 1 mi.= 380'

1ST, Size: 4.5", Hole Size: 6.25"

Depth: 3680', Weight: UNK

Cement: 170 sx, TOC: 1550', Method: CALC

tubing UNK

TOC = 1550' (CALC)

NBRR Perfs 2494' - 2531'

PBTD (ft) 3635'

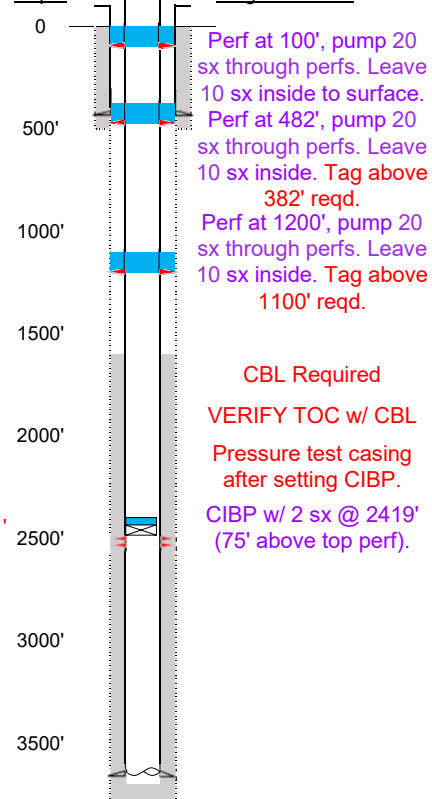
TD (ft) 3750'

NIOBRARA - 2491'

BENTONITE - 3212'

D SAND - 3298'

SKULL CREEK - 3514'

PROPOSEDDepthPlug PlacementPerf at 100', pump 20
sx through perfs. Leave
10 sx inside to surface.Perf at 482', pump 20
sx through perfs. Leave
10 sx inside. Tag above
382' reqd.Perf at 1200', pump 20
sx through perfs. Leave
10 sx inside. Tag above
1100' reqd.

CBL Required

VERIFY TOC w/ CBL

Pressure test casing
after setting CIBP.CIBP w/ 2 sx @ 2419'
(75' above top perf).

NIOBRARA - 2491'