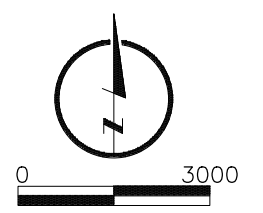
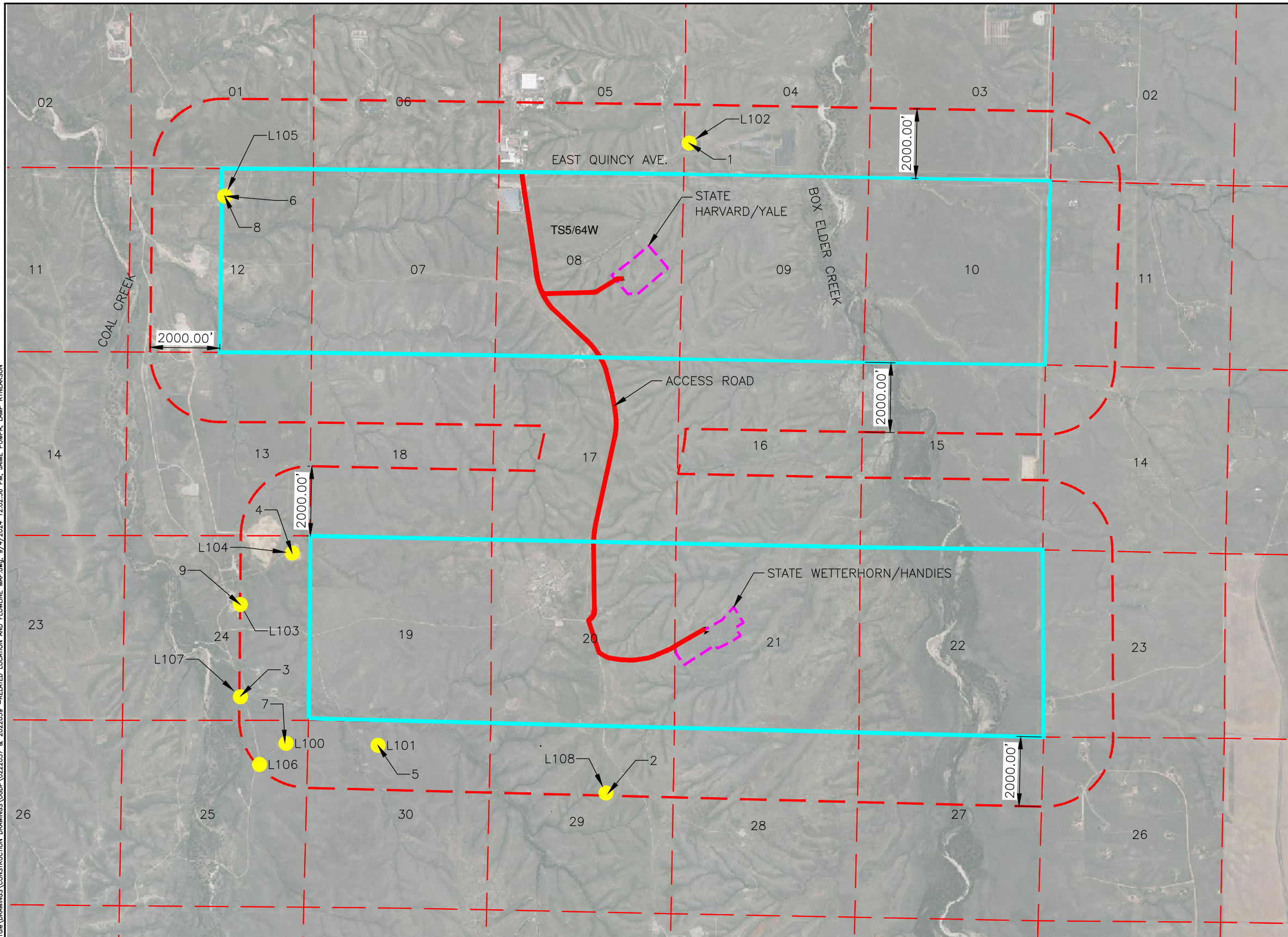


L:\Engineering\0222037 - State Harvard - Yale\DRAWINGS\CONSTRUCTION DRAWINGS\OGDP\0222037 & 0222039 -RELATED LOCATION AND FLOWLINE MAP.dwg, 9/4/2024, 12:02:36 PM, JAMIE POMPA, LAMP RYNEARSON



LEGEND

- DISTURBANCE AREA
- 2000' SETBACK FROM OGDP
- SECTION LINE
- MINERAL DEVELOPMENT AREA
- O&G LOCATIONS
- L 50
- O&G WELL
- CITY OF AURORA
- ACCESS ROAD

HARVARD/YALE NOTES

1. DISTURBED AREA DURING CONSTRUCTION = 26.39 ACRES
2. DRILLING WORKING PAD SURFACE = 10.41 AC
3. INTERIM RECLAMATION WORKING PAD SURFACE = 4.49 AC
3. REFERENCE WELL: STATE YALE 5-64 9-10 2AH, LAT.LONG = 39.630486/-104.56849
4. SURFACE USE = RANGELAND
5. SEE SHEET 2 FOR EXISTING O&G WELL AND LOCATION TABLE.

WETTERHORN/HANDIES NOTES

1. DISTURBED AREA DURING CONSTRUCTION = 28.40 ACRES
2. DRILLING WORKING PAD SURFACE = 11.71 AC
3. INTERIM RECLAMATION WORKING PAD SURFACE = 4.94 AC
3. REFERENCE WELL: STATE WETTERHORN 5-64 20-19 1AH, LAT/LONG = 39.600779/-104.564260 ELEVATION = 5986', PDOP = 1.613, DATE = 06/06/2024, OPERATOR = I.PRUSHNOK
4. SURFACE USE = RANGELAND
5. SEE SHEET 2 FOR EXISTING O&G WELL AND LOCATION TABLE.

LAMP RYNEARSON

LAMPRYNEARSON.COM

CRESTONE PEAK RESOURCES OPERATING LLC

OMAHA, NEBRASKA
14710 W. DODGE RD, STE. 100 (402)496.2498

FORT COLLINS, COLORADO
4715 INNOVATION DR., STE. 100 (970)226.0342

KANSAS CITY, MISSOURI
9001 STATE LINE RD., STE. 200 (816)361.0440

DESIGNER / DRAFTER
JUP

REVIEWER
MAP

PROJECT NUMBER
0222037 & 0222039

DATE
09/04/2024

SURFACE LOCATION
S08 T5S R65W & S21 T5S R65W

BOOK AND PAGE
1 OF 2

STATE HARVARD/YALE AND STATE WETTERHORN/HANDIES OGDP RELATED LOCATION AND FLOWLINE MAP

L:\Engineering\0222037 - Civitas - State - Record - Yale\DRAWINGS\CONSTRUCTION DRAWINGS\OGDP\0222037 & 0222039 -RELATED LOCATION AND FLOWLINE MAP.dwg, 9/4/2024, 11:57:37 AM, JAMIE POMPA, LAMP RYNEARSON

OGDP LOCATION TABLE			
POINT #	OPERATOR	LOCATION ID	STATUS
L 100	RENEGADE OIL & GAS COMPANY LLC	320686	AC
L 101	RENEGADE OIL & GAS COMPANY LLC	320691	AC
L 102	CRESTONE PEAK RESOURCES OPERATING LLC	433616	AC
L 103	RENEGADE OIL & GAS COMPANY LLC	420284	AC
L 104	RENEGADE OIL & GAS COMPANY LLC	423626	AC
L 105	CRESTONE PEAK RESOURCES OPERATING LLC	436051	AC
L 106	RENEGADE OIL & GAS COMPANY LLC	478407	AC
L 107	RENEGADE OIL & GAS COMPANY LLC	320689	AC
L 108	RENEGADE OIL & GAS COMPANY LLC	320705	AC

WELL TABLE			
POINT #	OPERATOR	LOCATION NAME	LOCATION ID
1	CRESTONE PEAK RESOURCES OPERATING LLC	Tebo 4 1H	433616
2	RENEGADE OIL & GAS COMPANY LLC	STATE OF COLORADO 'AA'-65S64W 29SWNE	320705
3	RENEGADE OIL & GAS COMPANY LLC	STATE OF COLORADO 'W'-65S65W 24SWSE	320689
4	RENEGADE OIL & GAS COMPANY LLC	STATE OF CO 5-24HZ	423626
5	RENEGADE OIL & GAS COMPANY LLC	STATE OF COLORADO 'U'-65S64W 30NENW	320691
6	CRESTONE PEAK RESOURCES OPERATING LLC	State Harvard 1H	436051
7	RENEGADE OIL & GAS COMPANY LLC	STATE OF COLO 'T' (NCT-3)-65S65W 25NENE	320686
8	CRESTONE PEAK RESOURCES OPERATING LLC	State Harvard 1H	436051
9	RENEGADE OIL & GAS COMPANY LLC	STATE OF CO 7-24	420284

LAMP RYNEARSON

LAMPRYNEARSON.COM



CRESTONE PEAK RESOURCES OPERATING LLC

OMAHA, NEBRASKA
14710 W. DODGE RD, STE. 100 (402)496.2498
FORT COLLINS, COLORADO
4715 INNOVATION DR., STE. 100 (970)226.0342

KANSAS CITY, MISSOURI
9001 STATE LINE RD., STE. 200 (816)361.0440

DESIGNER / DRAFTER

JUP

REVIEWER

MAP

PROJECT NUMBER

0222037 & 0222039

DATE

09/04/2024

SURFACE LOCATION

S08 T5S R65W & S21 T5S R65W

BOOK AND PAGE

2 OF 2

STATE HARVARD/YALE AND STATE WETTERHORN/HANDIES OGDP RELATED LOCATION AND FLOWLINE MAP