

LEGEND

	PROPERTY LINE		PROPOSED WORKING PAD SURFACE
	OIL & GAS WELL		500' SETBACK
	DISTURBANCE AREA (26.39 AC)		1000' SETBACK
	OHP OVERHEAD POWER LINE		2000' SETBACK

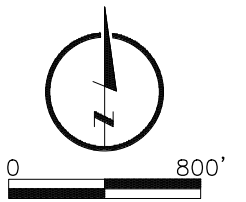


TABLE A

DISTANCE TO NEAREST	LENGTH	DIRECTION
BUILDING	2394'	SW
RESIDENTIAL BUILDING UNIT (RBU)	2394'	SW
HIGH OCCUPANCY BUILDING UNIT (HOBU)	5280'+	SW
DESIGNATED OUTSIDE ACTIVITY AREA	5280'+	NW
PUBLIC ROAD	2432'	N
ABOVE GROUND UTILITY	130'	S
RAILROAD	5280'+	NW
PROPERTY LINE	636'	E
SCHOOL FACILITY	5280'+	SW
CHILD CARE CENTER	5280'+	SW
DISPROPORTIONATELY IMPACTED (DI) COMMUNITY	5280'+	NW

NEAREST WITHIN DISPROPORTIONATELY IMPACTED COMMUNITY

DISTANCE (FT)	DIRECTION	DESCRIPTION
5280'+	NW	Nearest RBU
5280'+	NW	Nearest HOBU (Ridge View Charter School)
5280'+	NW	Nearest School (Ridge View Charter School)

TABLE B

Boundary	Number of Building Units	Number of Residential Building Units	Number of High Occupancy Building Units	Number of School Properties	Number of School Facilities	Number of Designated Outside Activity Area
Within 500' Buffer from Working Pad Surface	0	0	0	0	0	0
Within 1000' Buffer from Working Pad Surface	0	0	0	0	0	0
Within 2000' Buffer from Working Pad Surface	0	0	0	0	0	0

NOTES

1. DISTURBED AREA DURING CONSTRUCTION = 26.39 ACRES
2. INTERIM RECLAMATION WORKING PAD SURFACE = 4.49 ACRES
3. REFERENCE WELL: STATE YALE 5-64 9-10 2AH, LAT/LONG = 39.630486/-104.569849
4. SURFACE USE = RANGELAND
5. TABLE DISTANCES ARE FROM WORKING PAD SURFACE

L:\Engineering\0222037 - Civitas - State - Harvard - Yale\DRAWINGS\CONSTRUCTION DRAWINGS\060\0222037-CULTURAL DISTANCE MAP.dwg, 9/6/2024, 11:04:40 PM, JAIME POMPA, LAMP RYNEARSON

LAMP RYNEARSON
LAMPRYNEARSON.COM

OMAHA, NEBRASKA
14110 W. DOUGLAS RD., STE. 100 (402) 496-2498
NE AUTH. NO.: CA0130

FORT COLLINS, COLORADO
4715 INNOVATION DR., STE. 100 (970) 226-0342

KANSAS CITY, MISSOURI
9001 STATE LINE RD., STE. 200 (816) 361-0440
MO AUTH. NO.: E-2013011903 | LS-2019043127

DESIGNER / DRAFTER
JAIME P./PAUL G.

REVIEWER
MAP

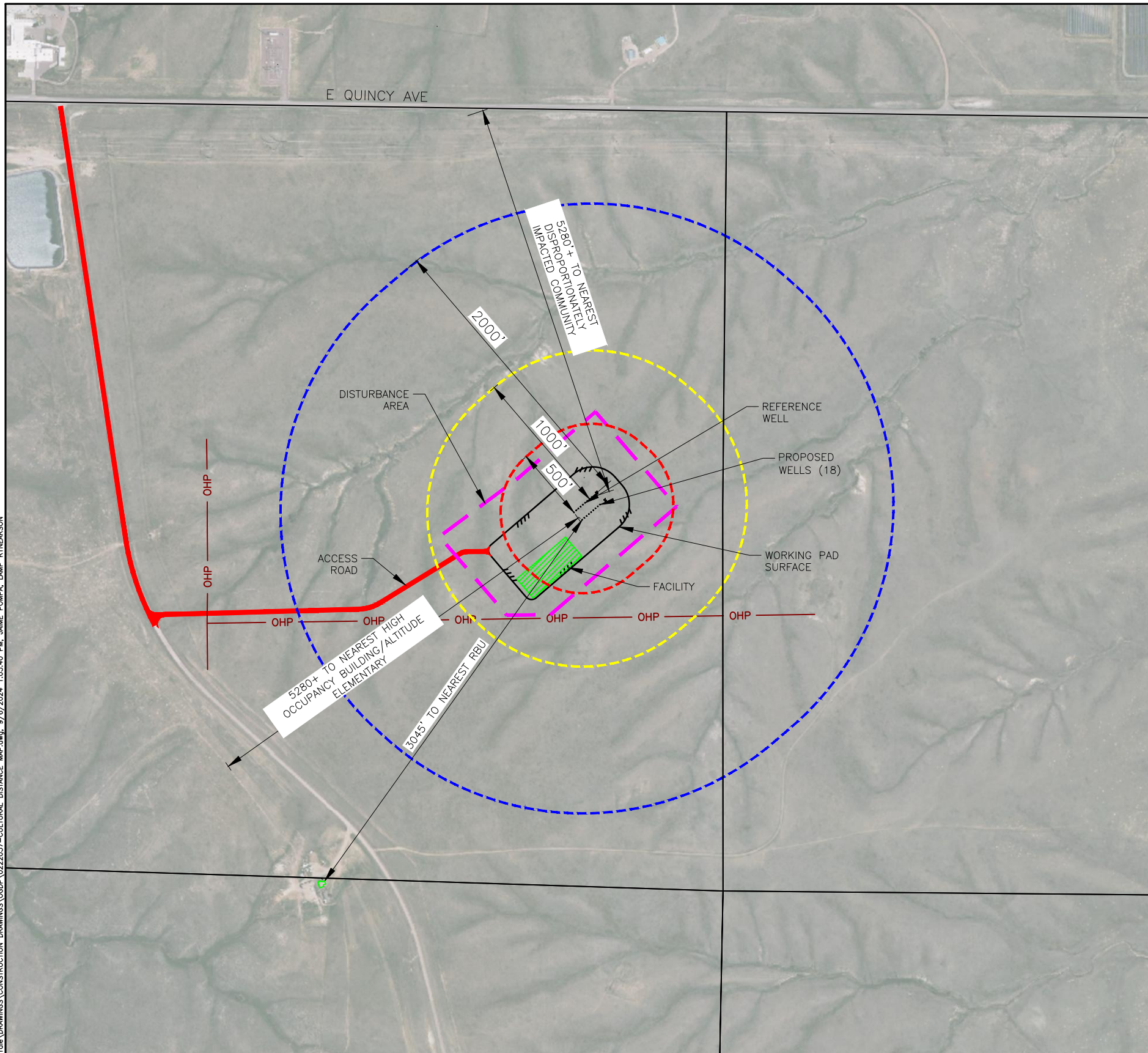
PROJECT NUMBER
0222037

DATE
09/06/2024

SURFACE LOCATION
S08 T5S R64W

BOOK AND PAGE
1 OF 2

STATE HARVARD/YALE PAD CULTURAL DISTANCE MAP



LEGEND

- PROPERTY LINE
- OIL & GAS WELL
- - - - - DISTURBANCE AREA (26.39 AC)
- OHP — OVERHEAD POWER LINE
- / / / / — PROPOSED WORKING PAD SURFACE
- - - - - 500' SETBACK FROM WELLHEAD
- - - - - 1000' SETBACK FROM WELLHEAD
- - - - - 2000' SETBACK FROM WELLHEAD

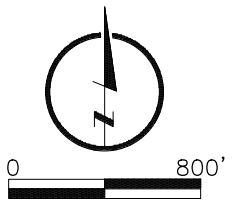


TABLE A				
DISTANCE TO NEAREST	WELL NAME	LENGTH	DIRECTION	
BUILDING	STATE HARVARD 5-64 8-7-12 4BH	3045'	SW	
RESIDENTIAL BUILDING UNIT	STATE HARVARD 5-64 8-7-12 4BH	3045'	SW	
HIGH OCCUPANCY BUILDING UNIT	STATE YALE 5-64 9-10 4BH	5280'+	SW	
DESIGNATED OUTDOOR ACTIVITY AREA	STATE YALE 5-64 9-10 5TBD	5280'+	NW	
PUBLIC ROAD	STATE YALE 5-64 9-10 5TBD	2639'	N	
ABOVE GROUND ELECTRIC (OVERHEAD POWER)	STATE HARVARD 5-64 8-7-12 4BH	667'	S	
RAILROAD	STATE YALE 5-64 9-10 5TBD	5280'+	NW	
PROPERTY LINE	STATE YALE 5-64 9-10 6TBD	836'	E	
SCHOOL FACILITY	STATE YALE 5-64 9-10 4BH	5280'+	SW	
CHILDCARE FACILITY	STATE YALE 5-64 9-10 4BH	5280'+	SW	
DISPROPORTIONATELY IMPACTED COMMUNITIES	STATE YALE 5-64 9-10 5TBD	5280'+	NW	

NOTE: ALL DISTANCES ARE FROM CENTER OF WELLHEAD.

L:\Engineering\0222037 - Civitas - State - Harold - Yale\DRAWINGS\CONSTRUCTION DRAWINGS\0606\CULTURAL DISTANCE MAP.dwg, 9/6/2024, 1:05:40 PM, JAIME POMPA, LAMP RYNEARSON

LAMP RYNEARSON
LAMPRYNEARSON.COM

OMAHA, NEBRASKA
14710 W. DOCK RD., STE. 100 (402) 496-2498
NE AUTH. NO.: CA0130

FORT COLLINS, COLORADO
4715 INNOVATION DR., STE. 100 (970) 226-0342

KANSAS CITY, MISSOURI
9001 STATE LINE RD., STE. 200 (816) 361-0440
MO AUTH. NO.: E-2013011903 | LS-2019043127

DESIGNER / DRAFTER
JAIME P./PAUL G.

REVIEWER
MICHAEL PALIZZI

PROJECT NUMBER
0222037

DATE
09/06/2024

SURFACE LOCATION
S08 T5S R64W

BOOK AND PAGE
2 OF 2

STATE HARVARD/YALE PAD CULTURAL DISTANCE MAP - WELLS