

LEGEND

- INITIAL ASSESSMENT BOUNDARIES
- SS-02 APPROXIMATE LOCATION OF SOIL SAMPLES FIELD SCREENED, ONLY, WITH PHOTOIONIZATION DETECTOR
- SS-02 APPROXIMATE LOCATION OF SOIL SAMPLES SUBMITTED FOR LABORATORY ANALYSIS

PARAMETERS

SAMPLE LOCATION
DATE
DEPTH (FEET)
B = BENZENE (mg/kg)
T = TOLUENE (mg/kg)
E = ETHYLBENZENE (mg/kg)
X = TOTAL XYLENES (mg/kg)
N = NAPHTHALENE (mg/kg)
G = TPH-GRO (mg/kg)
D = TPH-DRO (mg/kg)
R = TPH-RRO (mg/kg)
1,2,4-TMB = 1,2,4 TRIMETHYLBENZENE (mg/kg)
1,3,5-TMB = 1,3,5 TRIMETHYLBENZENE (mg/kg)
Brn= BORON (mg/L)
EC = SPECIFIC CONDUCTANCE (mmhos/cm)
SAR= SODIUM ADSORPTION RATIO
pH = pH (pH UNITS)
POLYCYCLIC AROMATIC HYDROCARBONS (PAHs) (mg/kg)

mg/kg = MILLIGRAMS PER KILOGRAM
mg/L = MILLIGRAMS PER LITER
mmhos/cm = MILLIMHOS PER CENTIMETER

(BRL) = ALL VALUES BELOW REGULATORY LIMITS

TPH-GRO = TOTAL PETROLEUM HYDROCARBONS – GASOLINE RANGE ORGANICS
TPH-DRO = TOTAL PETROLEUM HYDROCARBONS – DIESEL RANGE ORGANICS
TPH-RRO = TOTAL PETROLEUM HYDROCARBONS – RESIDUAL RANGE ORGANICS

NOTES:
VALUES PRESENTED IN **BOLD** EXCEED ECMC TABLE 915-1 REGULATORY LIMITS.

ECMC = ENERGY & CARBON MANAGEMENT COMMISSION

Proposed Site Investigation Plan

GIBSON #11-9
CLOSURE ASSESSMENT 40.506190 /
-104.448170
NW1/4 NW1/4 Sec.9 T6N R63W 6PM
WELD COUNTY, COLORADO API #
05-123-23102 REMEDIATION #
31628

FIGURE NO.

1

DRAWN BY:

RS

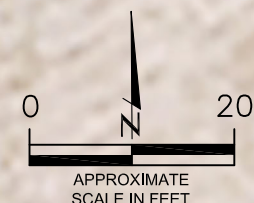
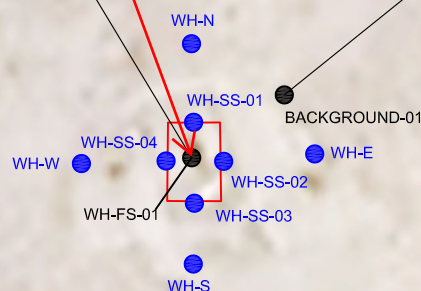


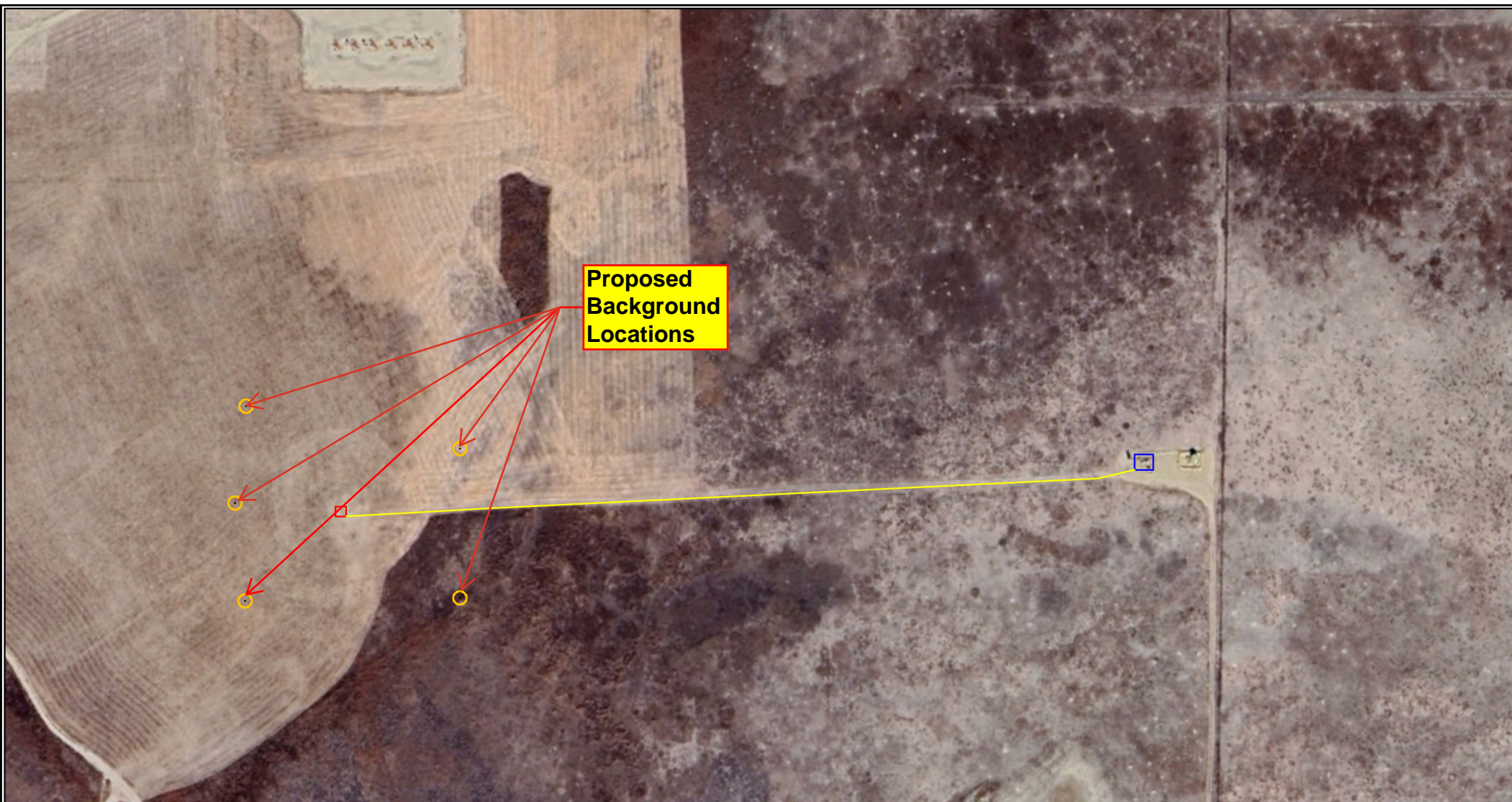
EAGLE
ENVIRONMENTAL
CONSULTING, LLC
8000 W 44th Ave, Wheat Ridge, CO 80033
Ph: 303-433-0479 • F: 303-325-5449

**Re-Sample for
Full Table 915-1
Suite**

WH-FS-01@7'
02/23/24
7'
(BRL)

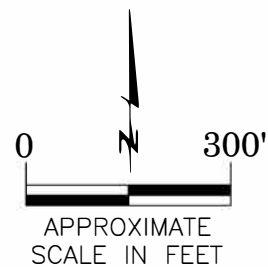
BACKGROUND-01@2'
02/23/24
2'
Brn= 0.395
EC = 0.333
SAR= 0.620
pH = **8.32**





LEGEND

- FORMER GIBSON #11-9 WELLHEAD (PLUGGED AND ABANDONED)
- ASSOCIATED SEPARATOR
- APPROXIMATE FLOWLINE LOCATION



Proposed Background Locations
 GIBSON #11-9
 CLOSURE ASSESSMENT
 40.506190 / -104.448170
 NW¼ NW¼ SEC.9 T6N R63W
 6PM WELD COUNTY, COLORADO
 API # 05-123-23102
 REMEDIATION # 31628

FIGURE NO.
2

DRAWN BY:
RS



EAGLE
 ENVIRONMENTAL
 CONSULTING, LLC
 8000 W 44th Ave, Wheat Ridge, CO 80033
 Ph: 303-433-0479 • F: 303-325-5449