

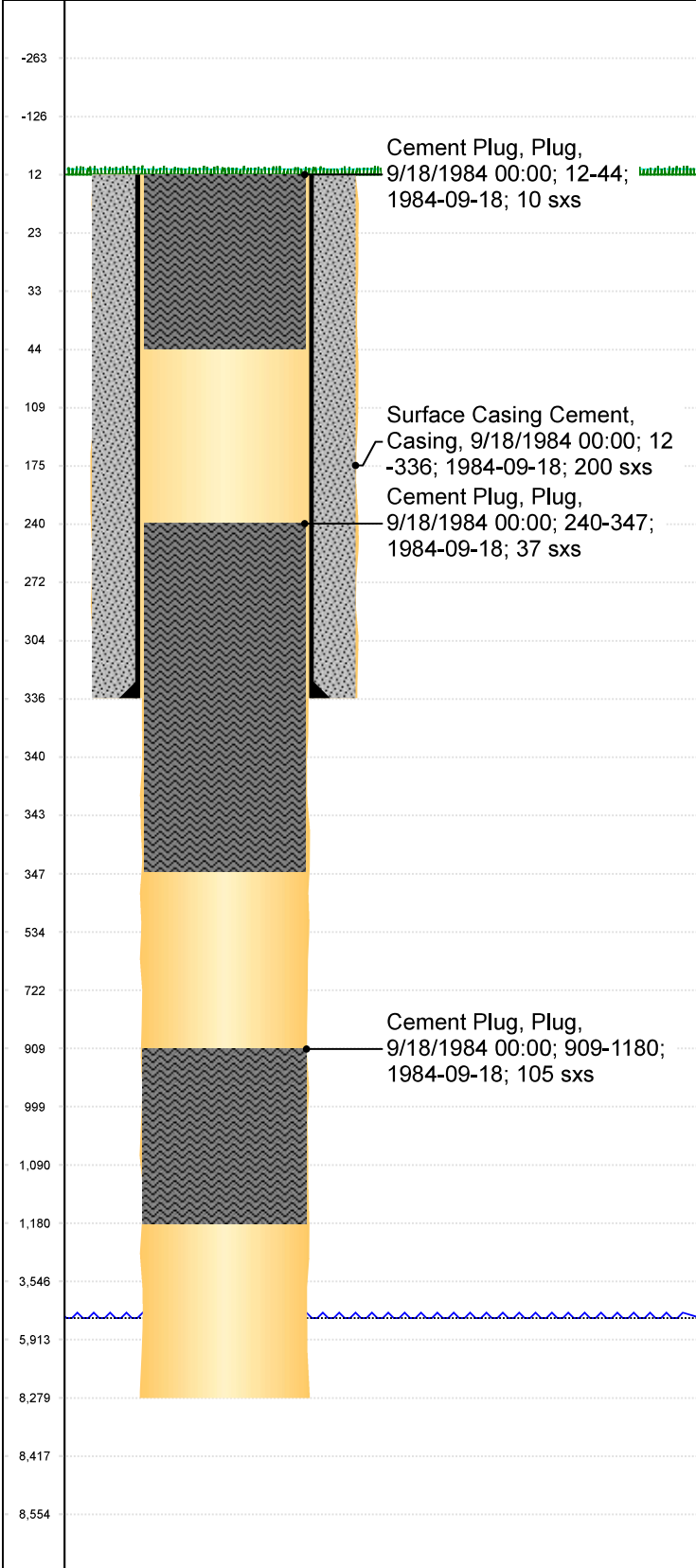


# PA Wellbore For State - Vertical

Well Name: Ritchey 1-19

Original Hole [Land]

MD (ftKB)  
B) Vertical schematic (actual)



Well Header				
Surface UWI	Business Unit	Gov Auth Dist	Prod Tree Loc	
0500108515	Rockies	Evans	Land	
Orig. KB to Gnd (ft)	Original Spud Date	Abandon Date	Well Sub-Status	High...
12.00	9/10/1984	9/19/1984	PA	N
Comment Well was drilled and abandoned.				

Geologic Horizons	
Formation Name	Final Top MD (ftKB)
Niobrara	7,318
Formation Name	Final Top MD (ftKB)
Codell	7,732
Formation Name	Final Top MD (ftKB)
J Sand	8,156
Formation Name	Final Top MD (ftKB)
Sussex	4,888

Surface Location (Congressional)							
Qtr 3	Qtr 4	Section	Twnshp	Twnsh...	Range	Rng E/...	Latitude (°)
SE	SW						39° 56'
							Longitude (°)
							104° 49' 16.172"
							45.708° N
							W

Wellbore Sections			
Section Des	Hole Size (in)	Top Depth (ftKB)	Btm Depth (ftKB)
Surface	12 3/4	12.0	336.0
Production	7 7/8	336.0	8,279.0

Casing Strings						
Csg Des	Run Date	OD (in)	Wt/Len (lb/ft)	Grade	Top Depth (MD) (ftKB)	Set Depth (MD) (ftKB)
Surface	9/18/1984	8 5/8	24.00		12	336

Cement			
Des	Start Date	Top (ftKB)	Btm (ftKB)
Surface Casing Cement	9/18/1984	12.0	336.0
Cement Plug	9/18/1984	12.0	44.0
Cement Plug	9/18/1984	240.0	347.0
Cement Plug	9/18/1984	909.0	1,180.0

Stim/Frac Summary	
Min Top Depth (ftKB)	Max Btm Depth (ftKB)

Perforations			
Linked Zone	Date	Top Depth (ftKB)	Bottom Depth (ftKB)

Other In Hole					
Run Date	Des	Make	OD (in)	Top (ftKB)	Btm (ftKB)

Logs			
Date	Type	Depth Top (MD) (ftKB)	Btm (ftKB)
9/17/1984	Compensated Density Neutron (CDN)	4,700	8,275.0
9/17/1984	Dual Induction (DIT)	347	8,275.0