


Company		CHEVRON		Company		CHEVRON	
Well		LUCCI STATE B03-69HNL		Well		LUCCI STATE B03-69HNL	
Field		WATTENBERG		Field		WATTENBERG	
County		WELD		County		WELD	
State		CO		State		CO	
Location:		API # : 05-123-36534		Other Services			
SEC 1		TWP 5		RGE 64W			
Permanent Datum		GL		Elevation		4641	
Log Measured From		24					
Drilling Measured From		KB					
Date		3/26/2025					
Run Number		1					
Depth Driller		N/A					
Depth Logger		816					
Bottom Logged Interval		820					
Top Log Interval		SURFACE					
Open Hole Size		8.75"					
Type Fluid		WATER					
Density / Viscosity		N/A					
Max. Recorded Temp.		N/A					
Estimated Cement Top		N/A					
Time Well Ready		ON ARRIVAL					
Time Logger on Bottom		N/A					
Equipment Number		5075					
Location		GREELEY CO					
Recorded By		CODY JENSEN					
Witnessed By		JORGE NAVA					
Borehole Record		Tubing Record					
Run Number		Bit		From		To	
Casing Record		Size		Wgt/Ft		Top	
Surface String		8.625		24		SURFACDE	
Prot. String						Bottom	
Production String		7		26		SURFACE	
Liner						TOTAL DEPTH	

<<< Fold Here >>>



All interpretations are opinions based on inferences from electrical or other measurements and we cannot and do not guarantee the accuracy or correctness of any interpretation, and we shall not, except in the case of gross or willful negligence on our part, be liable or responsible for any loss, costs, damages, or expenses incurred or sustained by anyone resulting from any interpretation made by any of our officers, agents or employees. These interpretations are also subject to our general terms and conditions set out in our current Price Schedule.

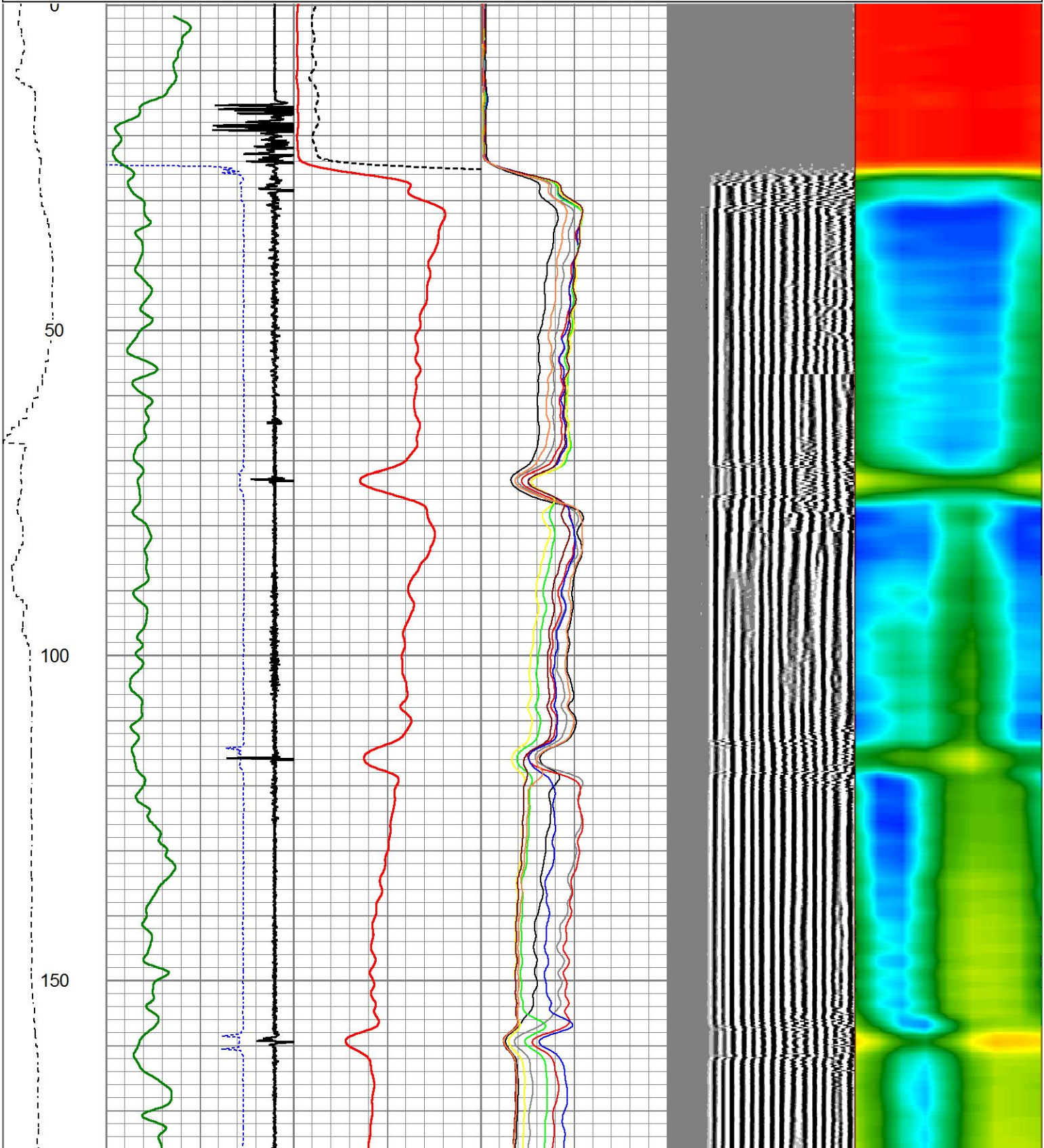
Comments

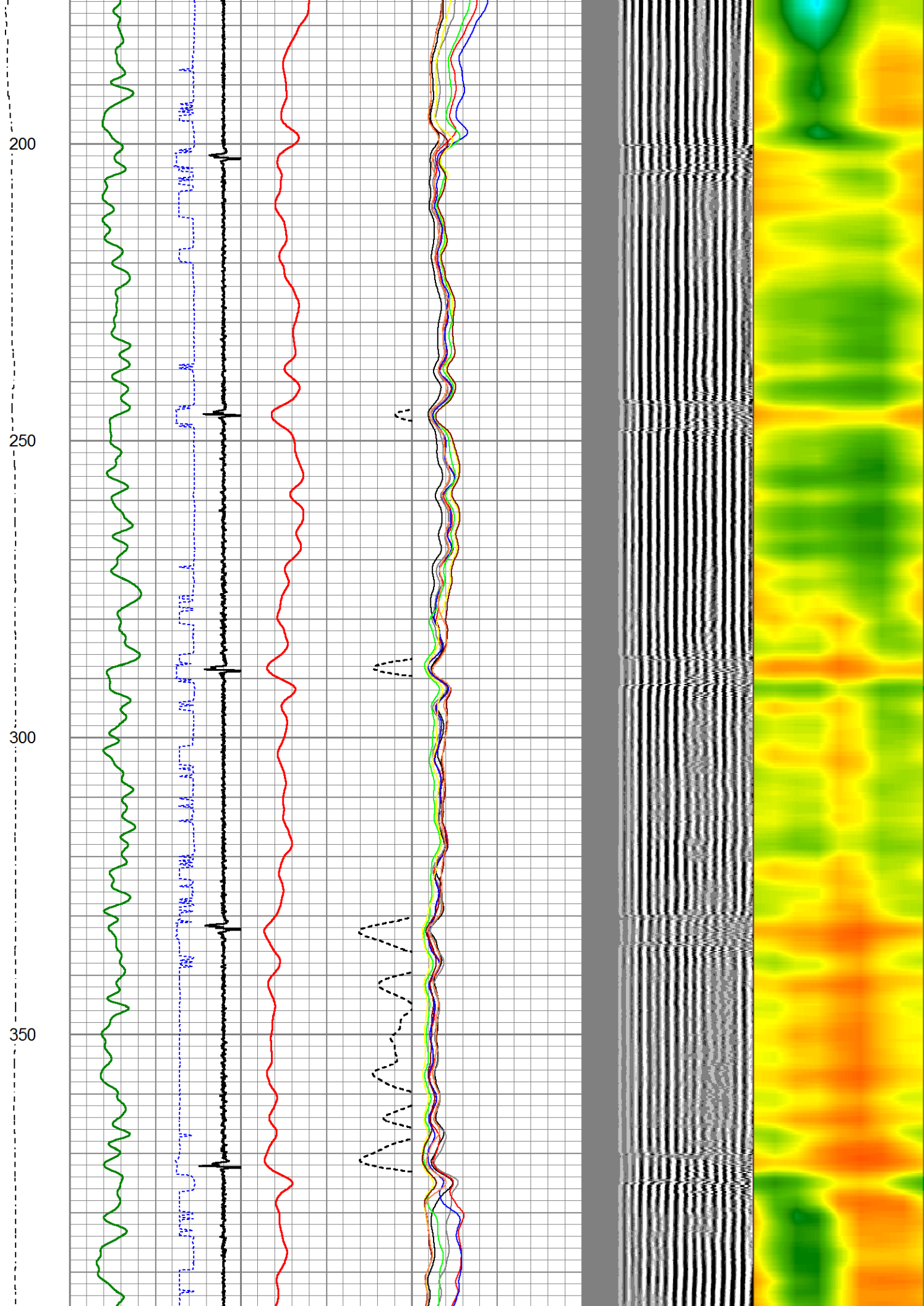
LOG RAN UNDER 1000 PSI

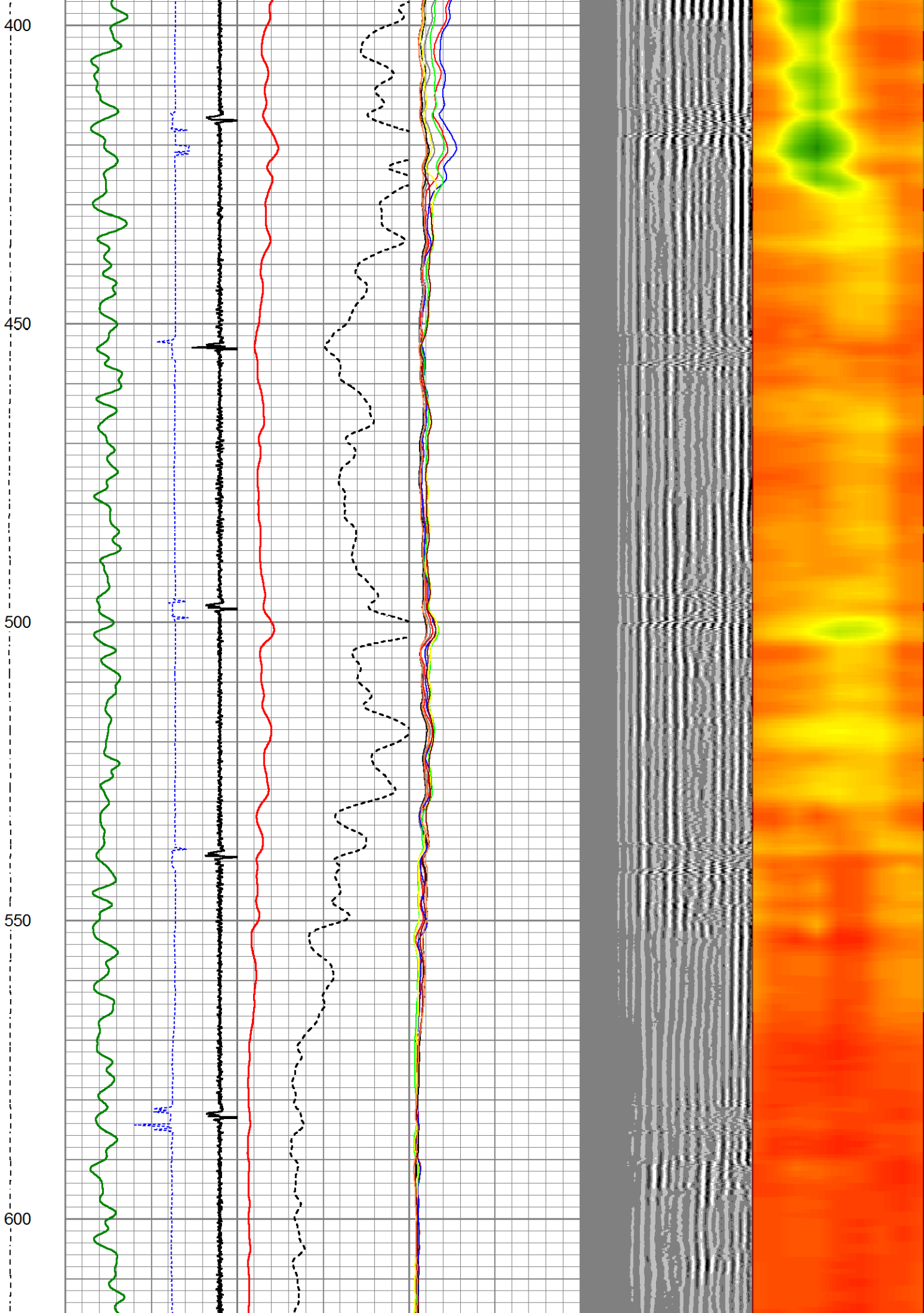
Sensor	Offset (ft)	Schematic	Description	Length (ft)	O.D. (in)	Weight (lb)
			CHD-1_11/16_Cablehead 1 11/16 Cablehead	1.00	1.68	5.00

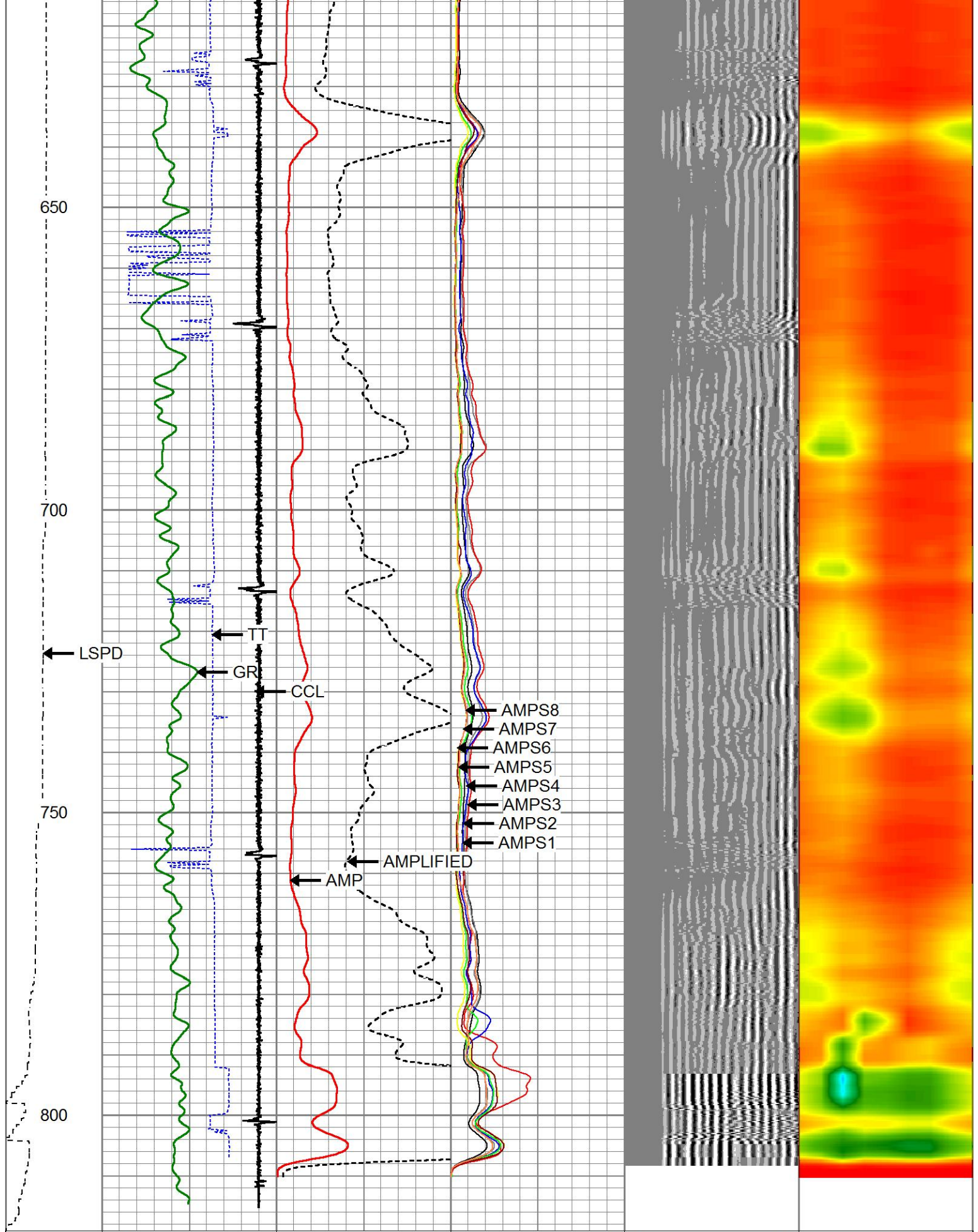
			CENT-1.69variable 1.69" Centrilizer Variable Length	2.88	1.69	15.00
Temp	13.93					
WVFS8	11.69		RBT-27SBT10 (Greeley Ext Temp) Probe 2.75" Radial with Integral Temperature Sub	9.39	2.75	
WVFS7	11.69					
WVFS6	11.69					
WVFS5	11.69					
WVFS4	11.69					
WVFS3	11.69					
WVFS2	11.69					
WVFS1	11.69					
WVF3FT	11.69					
WVF5FT	10.69					
HEADVOLT	7.44					
WVFCAL	7.44					
			CENT-1.69variable 1.69" Centrilizer Variable Length	2.88	1.69	15.00
CCL	3.63					
			GR-27GRL10 (27GRL10-XXXX) 2-3/4" Probe Gamma Ray	4.56	2.75	50.00
GR	0.89					
Dataset: lucci state b03-69hnl.db: field/well/run1/pass4 Total length: 20.71 ft Total weight: 85.00 lb O.D.: 2.75 in						

Charted by		Depth in Feet scaled 1.240													
LSPD (ft/min)	650	TT (usec)	150	0	AMP (mV)	100	0	AMPS1	150	200	VDL (usec)	1200	1	Cement Map	8
	-9	CCL	1	AMPLIFIED			0	AMPS2	150						
	0	GR (GAPI)	200	0	(mV)	20	0	AMPS3	150						
	200		GR (GAPI)	400				0	AMPS4	150					
							0	AMPS5	150						
							0	AMPS6	150						
							0	AMPS7	150						
							0	AMPS8	150						









LSPD	650	TT (usec)	150	0	AMP (mV)	100	0	AMPS1	150	200	VDL (usec)	1200	1	Cement Map	8
(ft/min)	-9	CCL	1		AMPLIFIED		0	AMPS2	150						
0	250	0	GR (GAPI)	200	0	(mV)	20	0	AMPS3	150					
		200	GR (GAPI)	100				0	AMPS4	150					

200	GR (GAPI)	400
-----	-----------	-----

0	AMPS4	150
0	AMPS5	150
0	AMPS6	150
0	AMPS7	150
0	AMPS8	150



Company	CHEVRON
Well	LUCCI STATE B03-69HNL
Field	WATTENBERG
County	WELD
State	CO

Country