

LEGEND

- WELL HEAD LOCATION
- ⊗ SOIL SAMPLE LOCATION
- ABOVE GROUND STORAGE TANK
- FORMER FACILITY
- FORMER FLOW LINE
- FENCE LINE
- ||||| CONTAINMENT BERM
- CONTAINMENT WALL
- NOT ANALYZED

SAMPLE ID	SAMPLE ID	SAMPLE ID	SAMPLE ID	SAMPLE ID	SAMPLE ID
DATE	DATE SAMPLED	DATE	DATE SAMPLED	DATE	DATE SAMPLED
DEPTH (ft)	DEPTH (ft)	DEPTH (ft)	DEPTH (ft)	DEPTH (ft)	DEPTH (ft)
ACE	ACENAPHTHENE (mg/kg)	ACE	ACENAPHTHENE (mg/kg)	ACE	ACENAPHTHENE (mg/kg)
Ant	ANTHRACENE (mg/kg)	Ant	ANTHRACENE (mg/kg)	Ant	ANTHRACENE (mg/kg)
BaA	BENZO (A) ANTHRACENE (mg/kg)	BaA	BENZO (A) ANTHRACENE (mg/kg)	BaA	BENZO (A) ANTHRACENE (mg/kg)
BaP	BENZO (A) PYRENE (mg/kg)	BaP	BENZO (A) PYRENE (mg/kg)	BaP	BENZO (A) PYRENE (mg/kg)
BbF	BENZO (K) FLUORANTHENE (mg/kg)	BbF	BENZO (K) FLUORANTHENE (mg/kg)	BbF	BENZO (K) FLUORANTHENE (mg/kg)
Chr	CHRYSENE (mg/kg)	Chr	CHRYSENE (mg/kg)	Chr	CHRYSENE (mg/kg)
DBaAnt	DIBENZO (A,H) ANTHRACENE (mg/kg)	DBaAnt	DIBENZO (A,H) ANTHRACENE (mg/kg)	DBaAnt	DIBENZO (A,H) ANTHRACENE (mg/kg)
FLU	FLUORANTHENE (mg/kg)	FLU	FLUORANTHENE (mg/kg)	FLU	FLUORANTHENE (mg/kg)
FL	FLUORENE (mg/kg)	FL	FLUORENE (mg/kg)	FL	FLUORENE (mg/kg)
FL123cdPY	INDENO (1,2,3-CD) PYRENE (mg/kg)	FL123cdPY	INDENO (1,2,3-CD) PYRENE (mg/kg)	FL123cdPY	INDENO (1,2,3-CD) PYRENE (mg/kg)
PY	PYRENE (mg/kg)	PY	PYRENE (mg/kg)	PY	PYRENE (mg/kg)
1MN	1-METHYLNAPHTHALENE (mg/kg)	1MN	1-METHYLNAPHTHALENE (mg/kg)	1MN	1-METHYLNAPHTHALENE (mg/kg)
2MN	2-METHYLNAPHTHALENE (mg/kg)	2MN	2-METHYLNAPHTHALENE (mg/kg)	2MN	2-METHYLNAPHTHALENE (mg/kg)
As	ARSENIC (mg/kg)	As	ARSENIC (mg/kg)	As	ARSENIC (mg/kg)
Ba	BARIUM (mg/kg)	Ba	BARIUM (mg/kg)	Ba	BARIUM (mg/kg)
Ca	CADMIUM (mg/kg)	Ca	CADMIUM (mg/kg)	Ca	CADMIUM (mg/kg)
Cr(VI)	CHROMIUM (mg/kg)	Cr(VI)	CHROMIUM (mg/kg)	Cr(VI)	CHROMIUM (mg/kg)
Cu	COPPER (mg/kg)	Cu	COPPER (mg/kg)	Cu	COPPER (mg/kg)
Pb	LEAD (mg/kg)	Pb	LEAD (mg/kg)	Pb	LEAD (mg/kg)
Ni	NICKEL (mg/kg)	Ni	NICKEL (mg/kg)	Ni	NICKEL (mg/kg)
Se	SELENIUM (mg/kg)	Se	SELENIUM (mg/kg)	Se	SELENIUM (mg/kg)
Ag	SILVER (mg/kg)	Ag	SILVER (mg/kg)	Ag	SILVER (mg/kg)
Zn	ZINC (mg/kg)	Zn	ZINC (mg/kg)	Zn	ZINC (mg/kg)

Figure 1
PROPOSED SITE INVESTIGATION PLAN
NOBLE ENERGY INC - DERR 21-4
 SENE Sec. 4, T5N, R65W, 6th PM
 Weld County, Colorado
 40.431342° , -104.663468°

Project No. C023-291	API # 05-123-30775	Facility #
Date 6/18/24	Remediation # 29994	Filename 23291Q

LEGEND

- - - WELLHEAD ASSESSMENT BOUNDARIES
- SS-02 APPROXIMATE LOCATION OF SOIL SAMPLES FIELD SCREENED, ONLY, WITH PHOTOIONIZATION DETECTOR
- SS-02 APPROXIMATE LOCATION OF SOIL SAMPLES SUBMITTED FOR LABORATORY ANALYSIS

PARAMETERS

SAMPLE LOCATION
 DATE
 DEPTH (FEET)
 B = BENZENE (mg/kg)
 T = TOLUENE (mg/kg)
 E = ETHYLBENZENE (mg/kg)
 X = TOTAL XYLENES (mg/kg)
 N = NAPHTHALENE (mg/kg)
 G = TPH-GRO (mg/kg)
 D = TPH-DRO (mg/kg)
 R = TPH-RRO (mg/kg)
 1,2,4-TMB = 1,2,4 TRIMETHYLBENZENE (mg/kg)
 1,3,5-TMB = 1,3,5 TRIMETHYLBENZENE (mg/kg)
 Brn= BORON (mg/L)
 EC = SPECIFIC CONDUCTANCE (mmhos/cm)
 SAR= SODIUM ADSORPTION RATIO
 pH = pH (pH UNITS)
 POLYCYCLIC AROMATIC HYDROCARBONS (PAHs) (mg/kg)

mg/kg = MILLIGRAMS PER KILOGRAM
 mg/L = MILLIGRAMS PER LITER
 mmhos/cm = MILLIMHOS PER CENTIMETER

BRL = BELOW REGULATORY LIMITS

TPH-GRO = TOTAL PETROLEUM HYDROCARBONS - GASOLINE RANGE ORGANICS
 TPH-DRO = TOTAL PETROLEUM HYDROCARBONS - DIESEL RANGE ORGANICS
 TPH-RRO = TOTAL PETROLEUM HYDROCARBONS - RESIDUAL RANGE ORGANICS

NOTES:
 VALUES PRESENTED IN **BOLD** EXCEED ECMC TABLE 915-1 REGULATORY LIMITS.

ECMC = ENERGY & CARBON MANAGEMENT COMMISSION

Site Investigation Plan

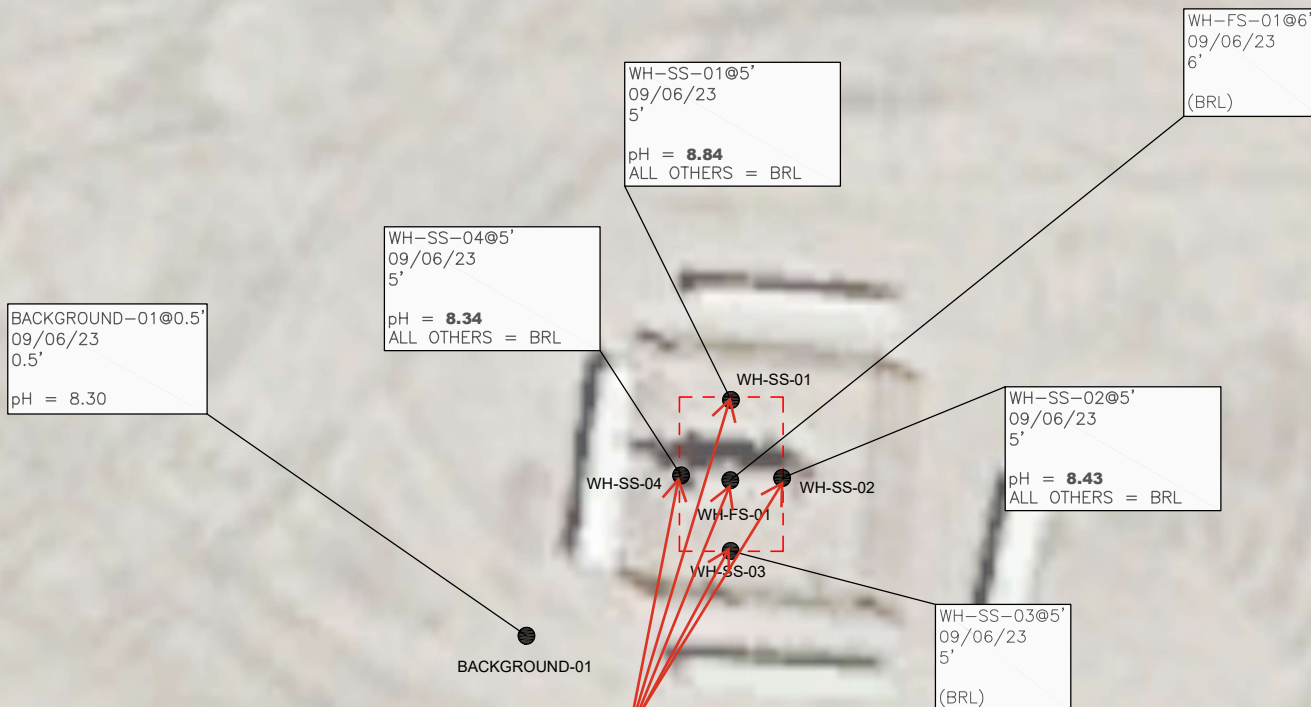
DERR #21-4
 CLOSURE ASSESSMENT
 40.431342 / -104.663468
 SE¼ NE¼ SEC.4 T5N R65W 6PM
 WELD COUNTY, COLORADO
 API # 05-123-30775
 REMEDIATION # 29994

FIGURE NO.
 2

DRAWN BY:
 BU



EAGLE
 ENVIRONMENTAL
 CONSULTING, LLC
 8000 W 44th Ave, Wheat Ridge, CO 80033
 Ph: 303-433-0479 • F: 303-325-5449



BACKGROUND-01@0.5'
 09/06/23
 0.5'
 pH = 8.30

WH-SS-04@5'
 09/06/23
 5'
 pH = **8.34**
 ALL OTHERS = BRL

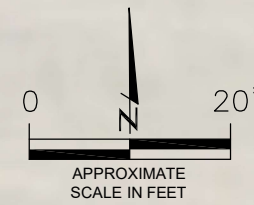
WH-SS-01@5'
 09/06/23
 5'
 pH = **8.84**
 ALL OTHERS = BRL

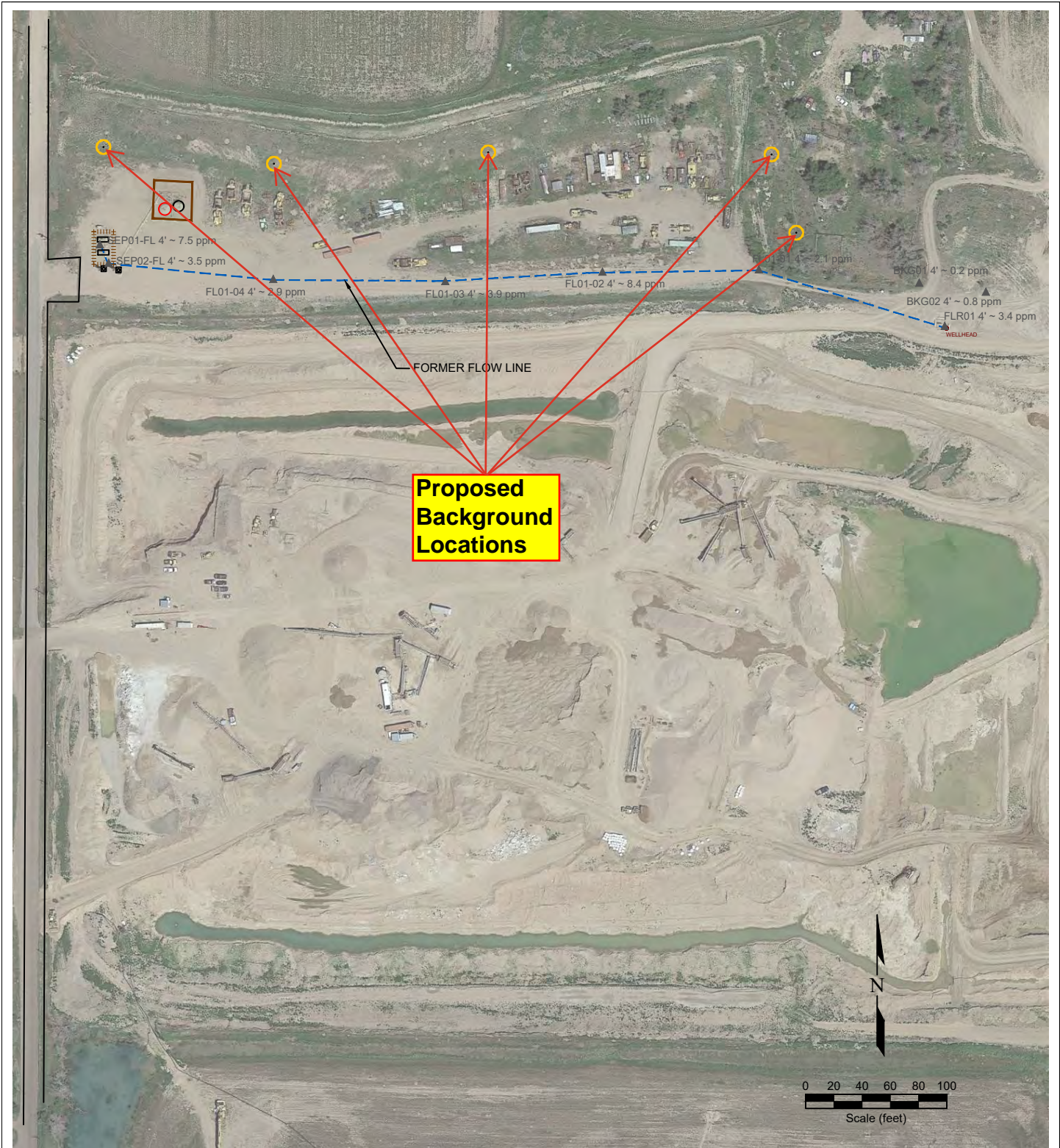
WH-FS-01@6'
 09/06/23
 6'
 (BRL)

WH-SS-02@5'
 09/06/23
 5'
 pH = **8.43**
 ALL OTHERS = BRL

WH-SS-03@5'
 09/06/23
 5'
 (BRL)

**Re-Sample for
 Full Table 915-1
 Suite**





LEGEND

- WELL HEAD LOCATION
- ▲ PID READING LOCATION
- ABOVE GROUND STORAGE TANK
- FORMER FACILITY
- FORMER FLOW LINE
- FENCE LINE
- CONTAINMENT BERM
- CONTAINMENT WALL

**Figure 3
PROPOSED BACKGROUND LOCATIONS**

NOBLE ENERGY INC - DERR 21-4

SENE Sec. 4, T5N, R65W, 6th PM
Weld County, Colorado
40.431342°, -104.663468°

Project No. C023-291	API # 05-123-30775	Facility #
Date 6/18/24	Remediation # 29994	Filename 23291Q

