

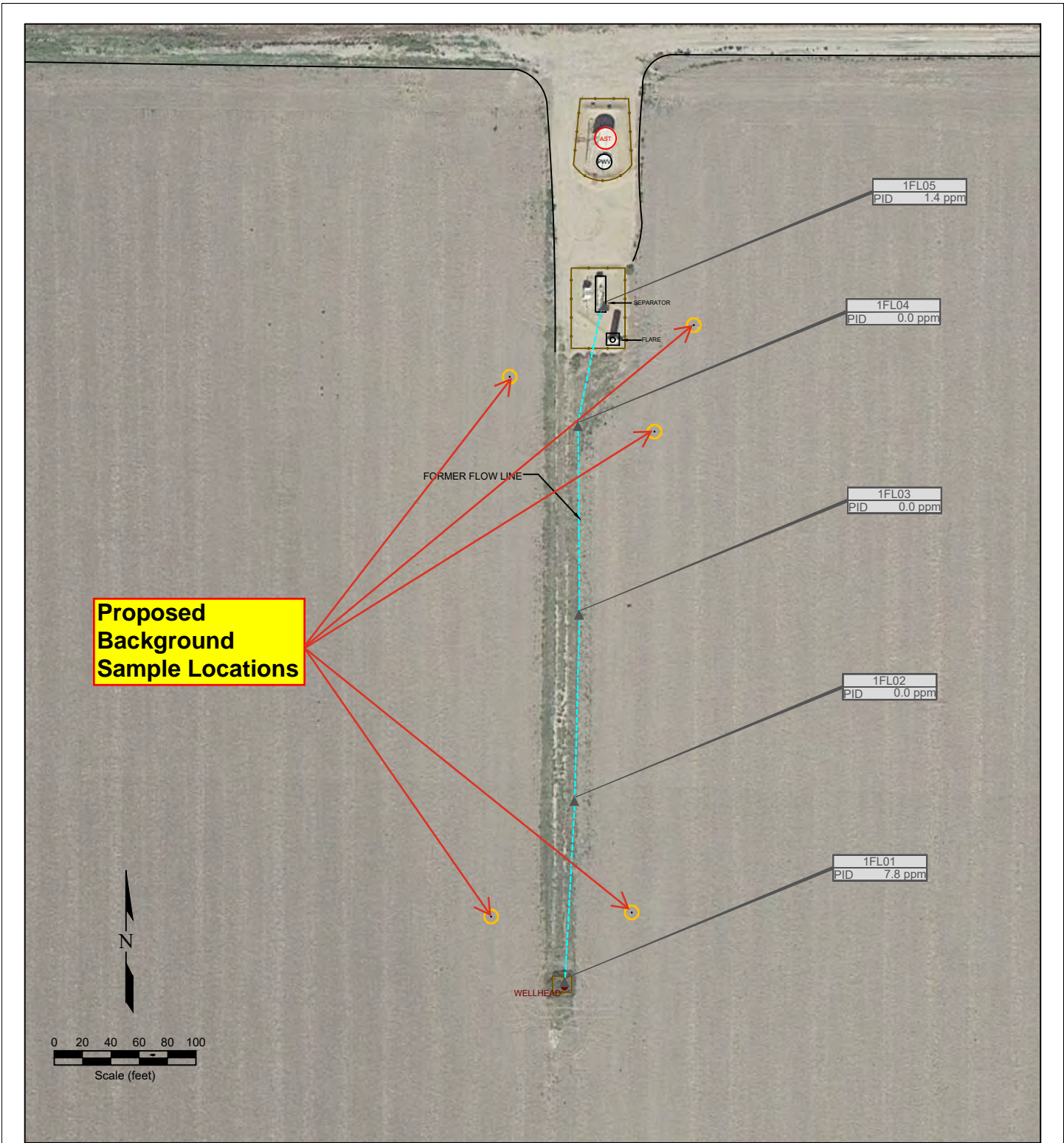
**LEGEND**

● WELL HEAD LOCATION	▲ PID READING LOCATION	AST ABOVE GROUND STORAGE TANK	FORMER FACILITY	— FENCE LINE
				▤ CONTAINMENT BERM
				— CONTAINMENT WALL
				- - - FLOW LINE

Figure 1  
**PROPOSED SITE INVESTIGATION PLAN**  
**NOBLE ENERGY INC~ BORN SITZMAN 1**

NENE Sec. 27, T4N, R64W, 6th PM  
 Weld County, Colorado  
 40.289050°, -104.529660°

Project No. <b>C023-067</b>	API # <b>05-123-11308</b>	Facility # <b>243516</b>	
Date <b>4/19/23</b>	Remediation # <b>25836</b>	Filename <b>23067Q</b>	



**Proposed Background Sample Locations**

FORMER FLOW LINE

1FL05  
PID 1.4 ppm

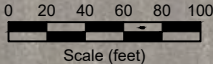
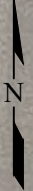
1FL04  
PID 0.0 ppm

1FL03  
PID 0.0 ppm

1FL02  
PID 0.0 ppm

1FL01  
PID 7.8 ppm

WELLHEAD



**LEGEND**

- WELL HEAD LOCATION
- ▲ PID READING LOCATION
- AST ABOVE GROUND STORAGE TANK
- FORMER FACILITY
- FENCE LINE
- CONTAINMENT BERM
- CONTAINMENT WALL
- FLOW LINE

**Figure 2**  
**PROPOSED BACKGROUND LOCATIONS**  
**NOBLE ENERGY INC~ BORN SITZMAN 1**

NENE Sec. 27, T4N, R64W, 6th PM  
Weld County, Colorado  
40.289050°, -104.529660°

Project No. <b>C023-067</b>	API # <b>05-123-11308</b>	Facility # <b>243516</b>
Date <b>4/19/23</b>	Remediation # <b>25836</b>	Filename <b>23067Q</b>

