



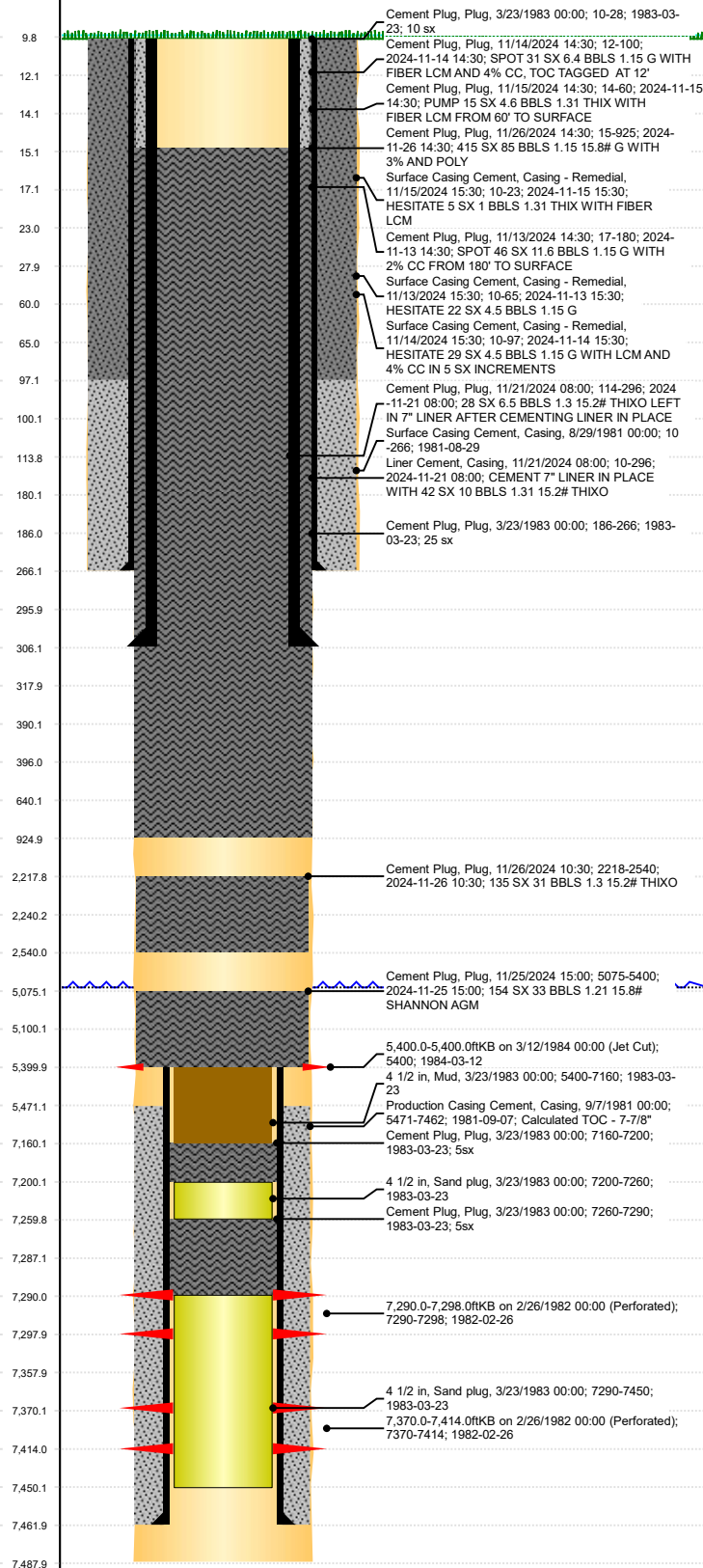
P&A Wellbore For State

Well Name: CUYKENDALL 24-7

Original Hole

MD
(ftK
B)

Vertical schematic (actual)



Well Header				
Surface UWI	Business Unit	Gov Auth Dist	Prod Tree Loc	
0512310357	Rockies			
Orig. KB to Gnd (ft)	Original Spud Date	Abandon Date	Well Sub-Status	High...
10.00	8/29/1981	4/18/1983	PA	N
Comment				
Mormack Energy Corp's well				

Wellbore Sections			
Section Des	Hole Size (in)	Top Depth (ftKB)	Btm Depth (ftKB)
Surface	12 1/4	10.0	266.0
Production	7 7/8	266.0	7,488.0

Casing Strings						
Csg Des	Run Date	OD (in)	Wt/Len (lb/ft)	Grade	Top Depth (MD) (ftKB)	Set Depth (MD) (ftKB)
Surface	8/29/1981	8 5/8	24.00		10	266
Drilling Tieback	11/20/2024	7	35.00	P-110	9.9	306
Production Casing	9/7/1981	5 1/2	17.00		10	7462

Cement			
Des	Start Date	Top (ftKB)	Btm (ftKB)
Surface Casing Cement	8/29/1981	10.0	266.0
Production Casing Cement	9/7/1981	5,471.0	7,462.0
Cement Plug	3/23/1983	7,160.0	7,200.0
Cement Plug	3/23/1983	7,260.0	7,290.0
Cement Plug	3/23/1983	10.0	28.0
Cement Plug	3/23/1983	186.0	266.0
Cement Plug	3/23/1983	318.0	390.0
Cement Plug	3/23/1983	396.0	640.0
Cement Plug	11/13/2024	10.0	180.0
Cement Plug	11/13/2024	10.0	100.0
Cement Plug	11/13/2024	10.0	60.0
Surface Casing Cement	11/13/2024	10.0	65.0
Surface Casing Cement	11/13/2024	10.0	97.0
Surface Casing Cement	11/13/2024	10.0	23.0
Liner Cement	11/21/2024	10.0	296.0
Cement Plug	11/21/2024	114.0	296.0
Cement Plug	11/25/2024	5,075.0	5,400.0
Cement Plug	11/26/2024	2,218.0	2,540.0
Cement Plug	11/26/2024	15.0	925.0

Zone Statuses					
Zone Name	Status Date	Status	Fluid Type	Job	Prod Method

Perforation Data					
Linked Zone	Explosive Type	Entered Shot Total	Top (ftKB)	Btm (ftKB)	Date
D Sand, Original Hole			5,400.0	5,400.0	3/12/1984
J Sand, Original Hole			7,290.0	7,298.0	2/26/1982
			7,370.0	7,414.0	2/26/1982

Other In Hole					
Run Date	Des	Make	OD (in)	Top (ftKB)	Btm (ftKB)
3/23/1983	Sand plug		4 1/2	7,200.0	7,260.0
3/23/1983	Sand plug		4 1/2	7,290.0	7,450.0
3/23/1983	Mud		4 1/2	5,400.0	7,160.0

Logs			
Date	Type	Depth Top (MD) (ftKB)	Btm (ftKB)