

**Flowline Abandonment Type:**

Full Removal. With full removal of previously ABIP 18-23HC Willow Bend LD (05-001-09776) and 18-361HN Willow Bend (05-001-09832) flowlines in common trench. With full removal of gas injection line.

**Flowlines**

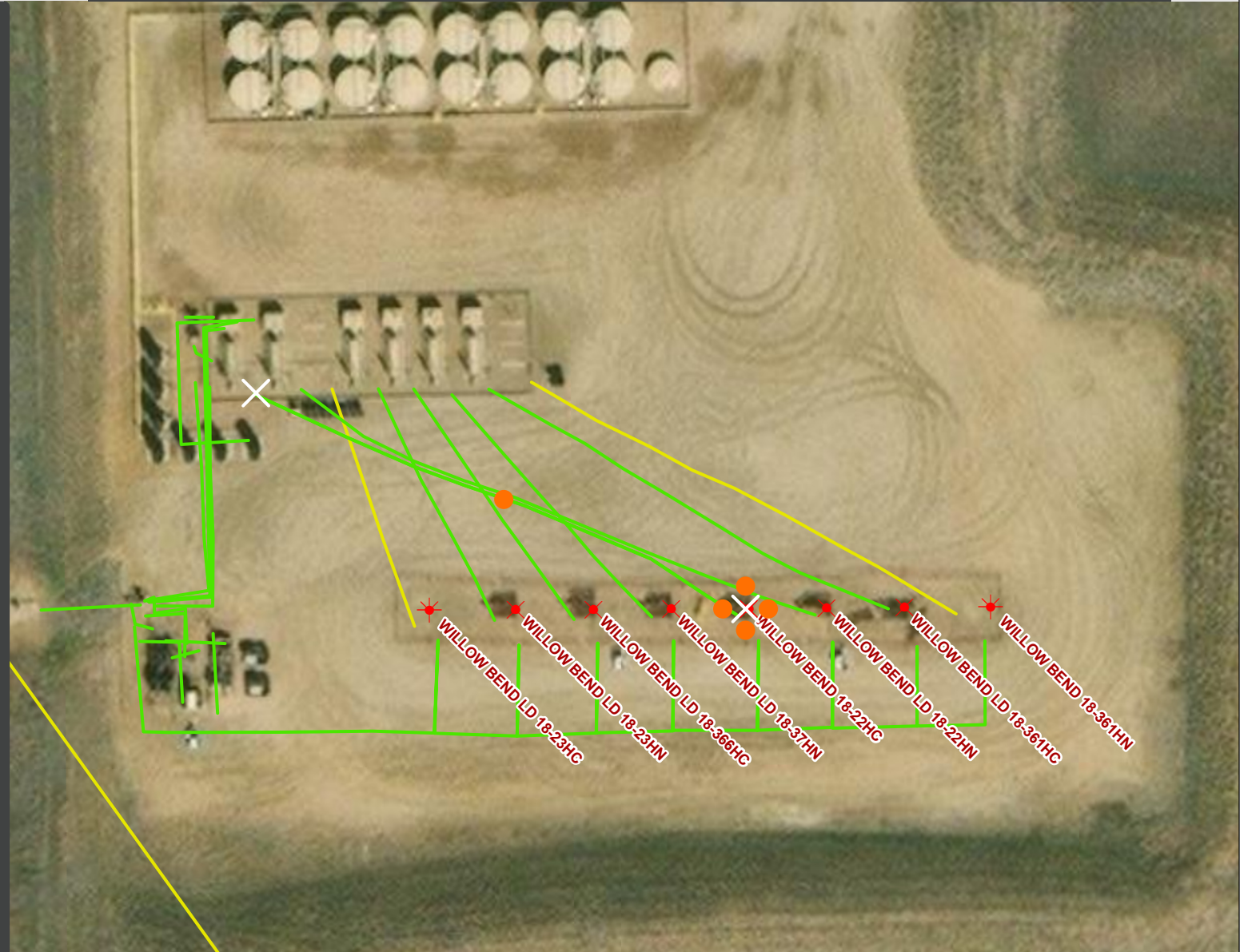
- Abandoned
- Active
- Out of Service
- Pre-Commissioned
- Removed
- Turned into Air Line
- Area of Conflict  
(Proposed Abandon-in-Place Area)
- ✕ Proposed Soil Sample Location
- Field Screening Location

**Wells**

- ✱ Active Well
- ✱ Abandoned Location
- ✱ Plugged & Abandoned
- ✱ Producing
- ✱ Shut-In
- ✱ Temporarily Abandoned
- ✱ Waiting on Completion

**Third-Party Pipelines**

- — — —
- — — —
- NWI Wetlands



Well Latitude/Longitude: 39.9709590/-104.9239890

Flowline Length (ft): 202

Flowline Point A Latitude/Longitude: 39.9711886/-104.9246584

Flowline Point B Latitude/Longitude: 39.9709552/-104.9240064

Created by: CJENCK

Date: 3/24/2025

