

Final Reclamation Inspection

March 19, 2025

Operator: KERR MCGEE OIL & GAS ONSHORE LP - 47120

Location ID: 336085

Inspection Document #: 718800057

Weld County, CO

Katelyn Mitchem
Reclamation Specialist, ECMC



COLORADO

**Energy & Carbon Management
Commission**

Department of Natural Resources

Inspection Photos
Location Name: CHAMPLIN 86 AMOCO
O-61N68W
Location ID: 336085

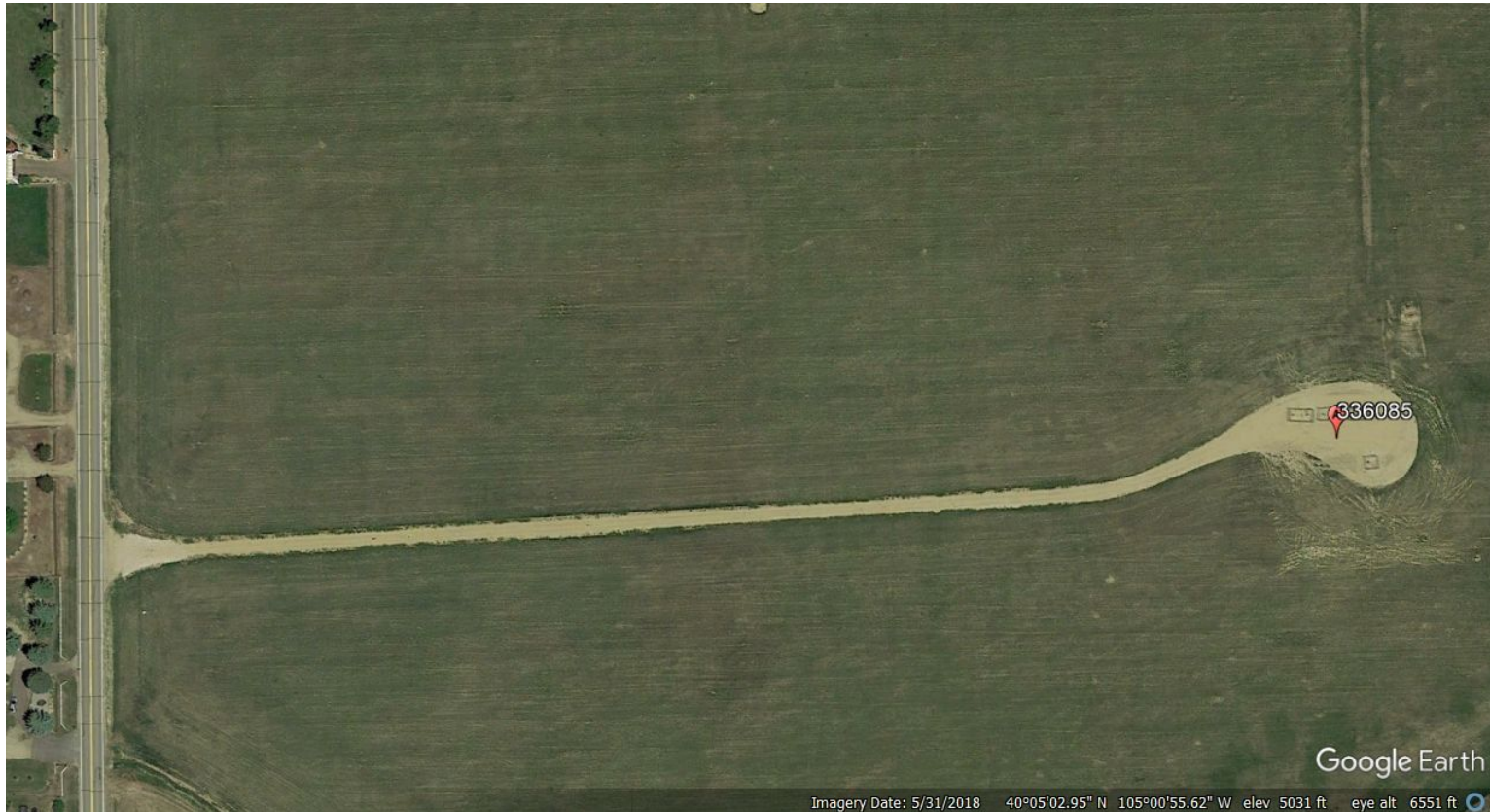


Photo 1. Google Earth aerial imagery from May 31, 2018. Photo illustrates the well location, access road, and associated tank battery during active operations.

Inspection Photos
Location Name: CHAMPLIN 86 AMOCO
O-61N68W
Location ID: 336085

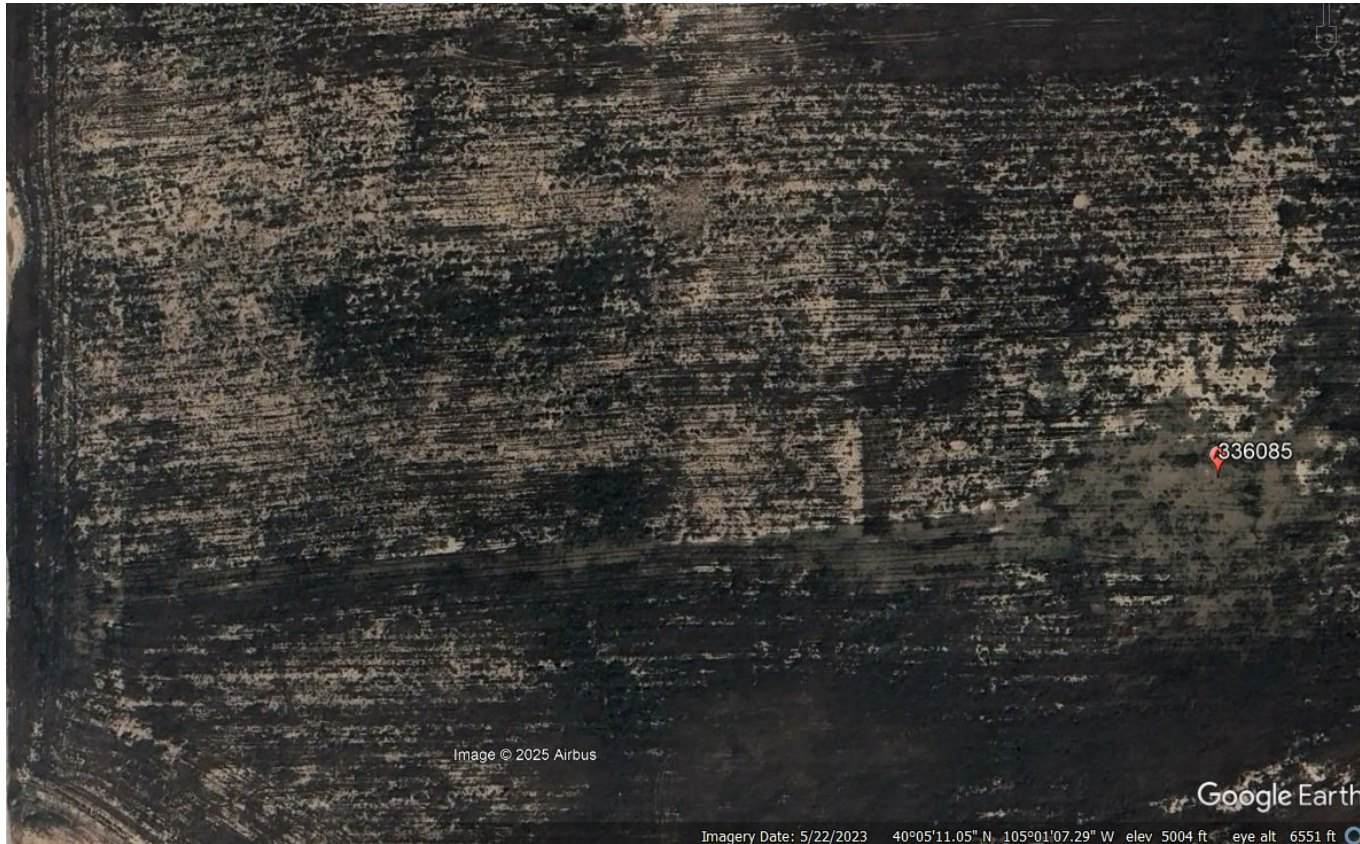


Photo 2. Google Earth aerial imagery from May 22, 2023. Photo illustrates the well location, access road, and associated tank battery after plugging operations. Based off of this imagery the vegetation throughout the crop field appears reflective of reference areas and meets Rule 1004 standards.

Inspection Photos
Location Name: CHAMPLIN 86 AMOCO
O-61N68W
Location ID: 336085



Photo 3. Photo taken from the multi-well location, facing North. Photo illustrates that the well location is contained within a land use change from cropland to a residential development.



Photo 4. Photo taken from the multi-well location, facing East. See comments under Photo 3.

Inspection Photos
Location Name: CHAMPLIN 86 AMOCO
O-61N68W
Location ID: 336085



Photo 5. Photo taken from the multi-well location, facing South. See comments under Photo 3.



Photo 6. Photo taken from the multi-well location, facing West. See comments under Photo 3.