

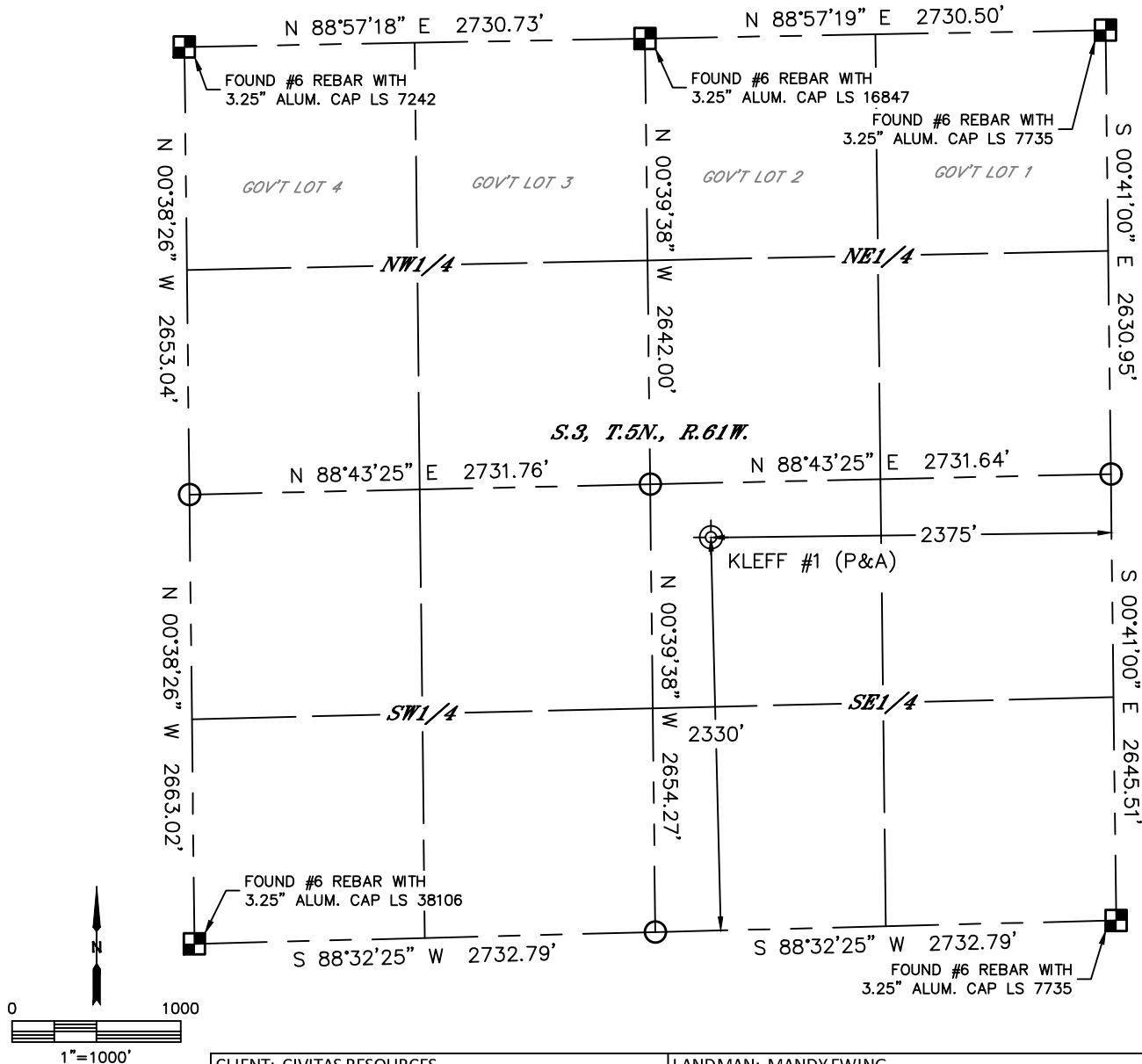


Lat40°, Inc. 6250 W. 10th Street, Unit 2, Greeley, CO 970-515-5294

PLUGGED AND ABANDONED WELL EXHIBIT

KLEFF #1

SECTION: 3
TOWNSHIP: 5N
RANGE: 61W
6TH. P.M.
WELD COUNTY, CO



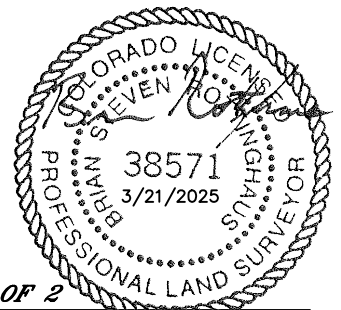
CLIENT: CIVITAS RESOURCES					LANDMAN: MANDY EWING				
INSTRUMENT OPERATOR: DUSTIN SIMON					SURVEY DATE: 3/20/2025		SURFACE USE: RANGELAND		
SHL FOOTAGE		SHL LAT°	SHL LONG°	SHL PDOP	SHL ELEV (FT.)	SHL 1/4/1/4	SHL S-T-R		
2330	FSL	2375	FEL	40.42948	-104.19355	1.3	4756	NWSE	3-5-61
DESCRIPTION: FOUND STRONG METAL DETECTOR RING AT NOTED POSITION. ALSO FOUND A PIECE OF CORE SAMPLE AND OTHER CONCRETE PIECES IN THE AREA.									

LEGEND

- = ALIQUOT MONUMENT AS DESCRIBED
- = CALCULATED POSITION
- ⊗ = ABANDONED WELL

NOTE:

- 1) Bearings shown are Grid Bearings of the Colorado State Plane Coordinate System, North Zone, North American Datum 1983. The lineal dimensions as contained herein are based upon the "U.S. Survey Foot."
- 2) Distances to section lines measured at 90 degrees from said section lines.
- 3) Ground elevations are based on an observed GPS elevation (NAVD 1988 DATUM).
- 4) Latitude and Longitude shown are (NAD 83 DATUM).
- 5) Sectional data as shown hereon is from previous surveys and was not verified for this P&A Exhibit.
- 6) This map does not represent a boundary survey.



SHEET 1 OF 2

Brian S. Rottinghaus—On behalf of Lat40°, Inc.
Colorado Licensed Professional Land Surveyor No. 38571
DATE: 3/21/2025
PROJECT#: 2025090



Lat40°, Inc. 6250 W. 10th Street, Unit 2, Greeley, CO 970-515-5294

PLUGGED AND ABANDONED WELL EXHIBIT

KLEFF #1

SECTION: 3
TOWNSHIP: 5N
RANGE: 61W
6TH. P.M.
WELD COUNTY, CO
DATE: 3/20/2025



VIEW NORTH



VIEW WEST



VIEW EAST



VIEW SOUTH