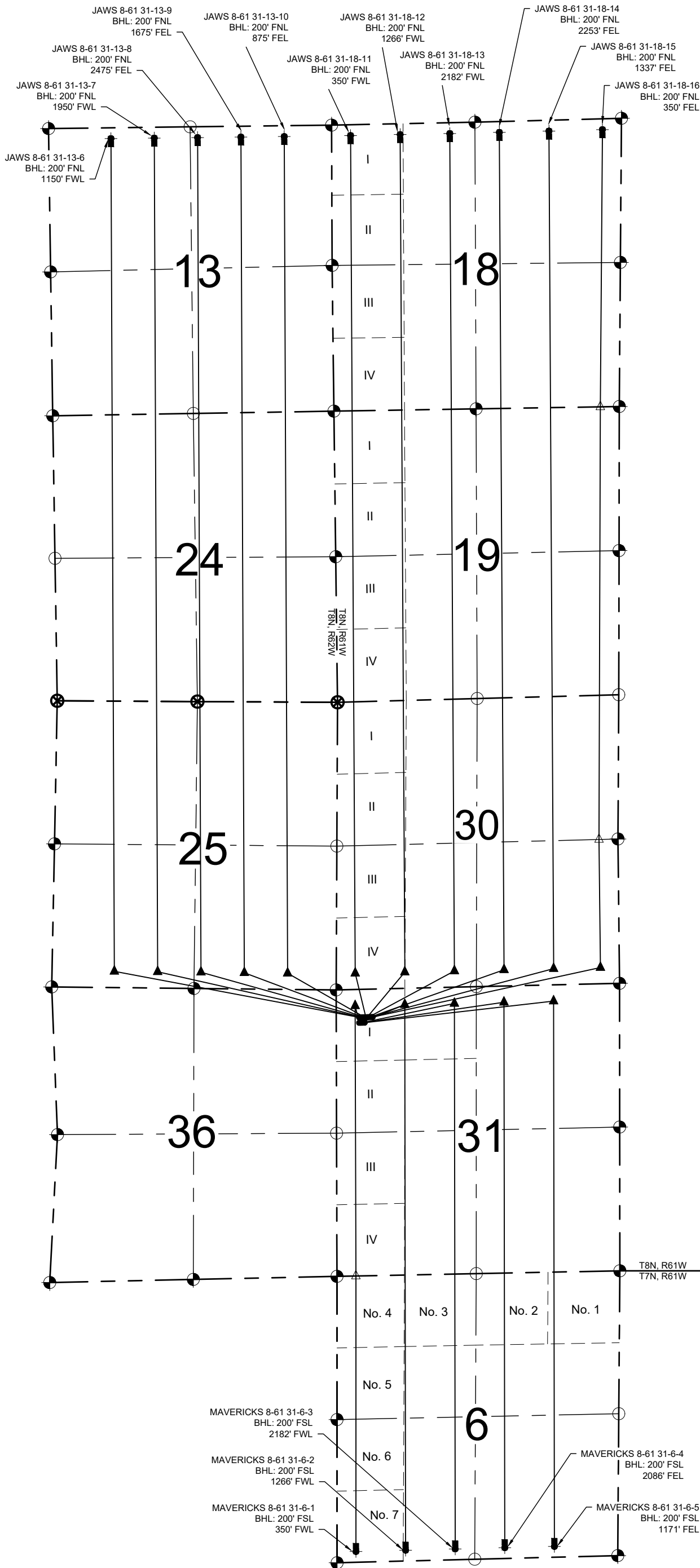


MAVERICKS PAD DIRECTIONAL WELL PLAT



NOTES:

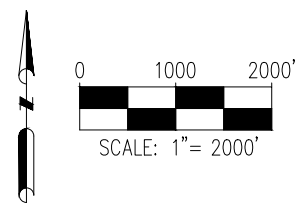
1. THIS FIELD SURVEY CONFORMS TO THE MINIMUM STANDARDS SET BY THE ECMC, RULE NO. 216
2. FIELD VERIFICATION OF MONUMENTS COMPLETED WITHIN 1 YEAR OF SIGNATURE DATE, UNLESS OTHERWISE NOTED.

NOTES:

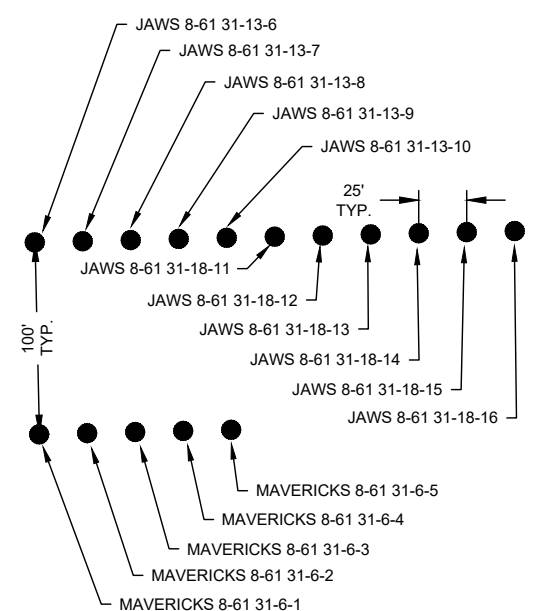
- MAVERICKS 8-61 31-6-1 TO BE AT 616' FNL & 425' FWL. BOTTOM HOLE AT 200' FSL & 350' FWL, SEC. 6, T7N, R61W.
- MAVERICKS 8-61 31-6-2 TO BE AT 616' FNL & 450' FWL. BOTTOM HOLE AT 200' FSL & 1266' FWL, SEC. 6, T7N, R61W.
- MAVERICKS 8-61 31-6-3 TO BE AT 616' FNL & 475' FWL. BOTTOM HOLE AT 200' FSL & 2182' FWL, SEC. 6, T7N, R61W.
- MAVERICKS 8-61 31-6-4 TO BE AT 616' FNL & 500' FWL. BOTTOM HOLE AT 200' FSL & 2086' FWL, SEC. 6, T7N, R61W.
- MAVERICKS 8-61 31-6-5 TO BE AT 616' FNL & 525' FWL. BOTTOM HOLE AT 200' FSL & 1171' FWL, SEC. 6, T7N, R61W.
- JAWS 8-61 31-13-6 TO BE AT 516' FNL & 422' FWL. BOTTOM HOLE AT 200' FNL & 1150' FWL, SEC. 13, T8N, R62W.
- JAWS 8-61 31-13-7 TO BE AT 516' FNL & 447' FWL. BOTTOM HOLE AT 200' FNL & 1950' FWL, SEC. 13, T8N, R62W.
- JAWS 8-61 31-13-8 TO BE AT 516' FNL & 472' FWL. BOTTOM HOLE AT 200' FNL & 2475' FWL, SEC. 13, T8N, R62W.
- JAWS 8-61 31-13-9 TO BE AT 516' FNL & 497' FWL. BOTTOM HOLE AT 200' FNL & 1675' FWL, SEC. 13, T8N, R62W.
- JAWS 8-61 31-13-10 TO BE AT 516' FNL & 522' FWL. BOTTOM HOLE AT 200' FNL & 875' FWL, SEC. 13, T8N, R62W.
- JAWS 8-61 31-18-11 TO BE AT 516' FNL & 547' FWL. BOTTOM HOLE AT 200' FNL & 350' FWL, SEC. 18, T8N, R61W.
- JAWS 8-61 31-18-12 TO BE AT 516' FNL & 572' FWL. BOTTOM HOLE AT 200' FNL & 1266' FWL, SEC. 18, T8N, R61W.
- JAWS 8-61 31-18-13 TO BE AT 516' FNL & 597' FWL. BOTTOM HOLE AT 200' FNL & 2182' FWL, SEC. 18, T8N, R61W.
- JAWS 8-61 31-18-14 TO BE AT 516' FNL & 622' FWL. BOTTOM HOLE AT 200' FNL & 2253' FWL, SEC. 18, T8N, R61W.
- JAWS 8-61 31-18-15 TO BE AT 516' FNL & 647' FWL. BOTTOM HOLE AT 200' FNL & 1337' FWL, SEC. 18, T8N, R61W.
- JAWS 8-61 31-18-16 TO BE AT 516' FNL & 672' FWL. BOTTOM HOLE AT 200' FNL & 350' FWL, SEC. 18, T8N, R61W.

LEGEND

- = EXISTING MONUMENT
- = PROPOSED WELL
- ⊙ = BOTTOM HOLE
- = CALCULATED POSITION
- ⊗ = CALCULATED POSITION PER WITNESS CORNER
- ▲ = LANDING POINT
- = BOTTOM OF PRODUCTION ZONE
- BHL = BOTTOM HOLE
- △ = INFLECTION POINT



WELL DETAILS
1" = 100'



FIELD DATE:
10-01-24
DRAWING DATE:
10-23-24
BY:
GLP
CHECKED:
NJH

WELL NAME:
MAVERICKS PAD
SURFACE LOCATION:
NW1/4 NW1/4 SEC. 31, T8N, R61W, 6TH P.M.
WELD COUNTY, COLORADO

PREPARED FOR: