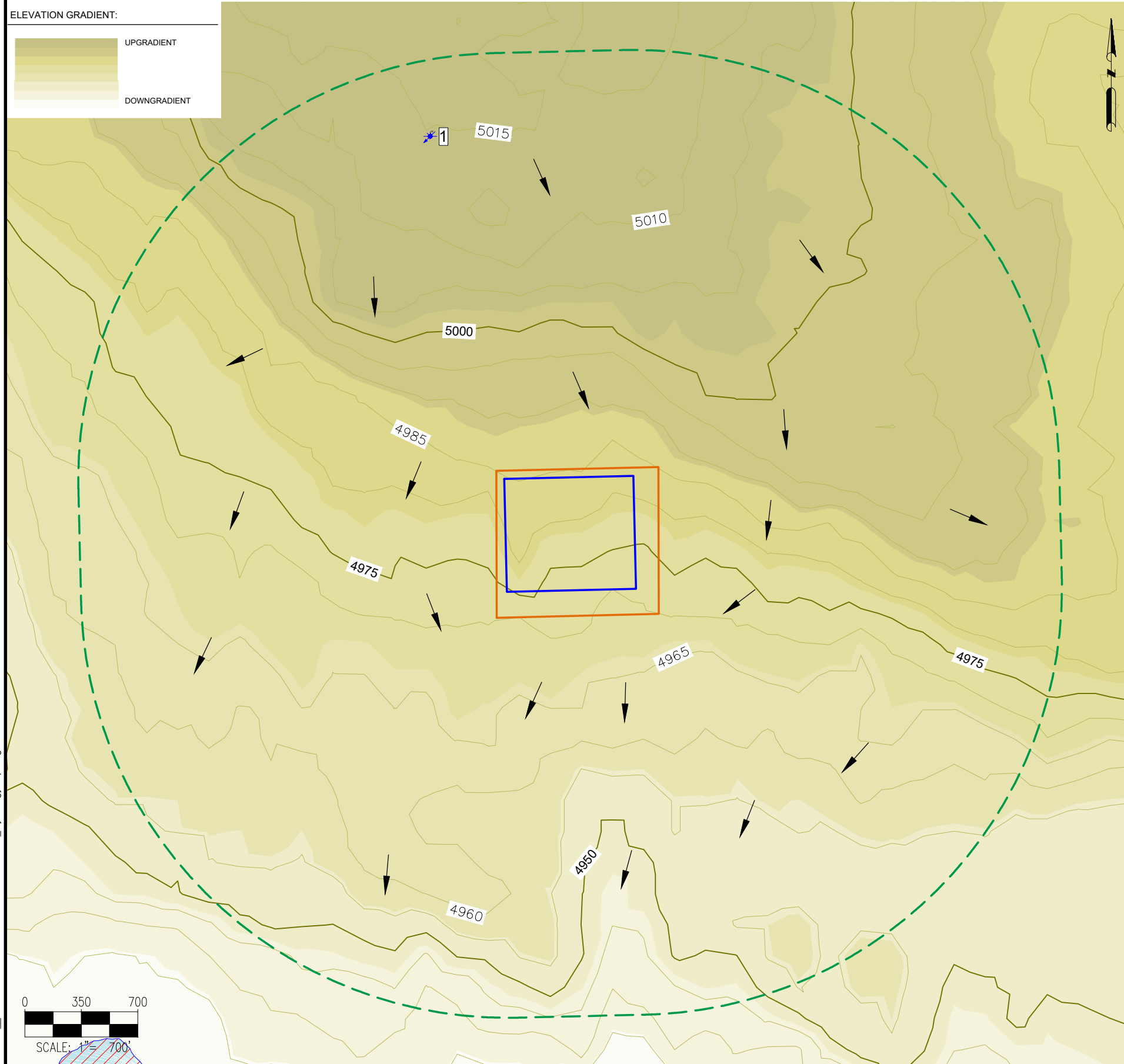
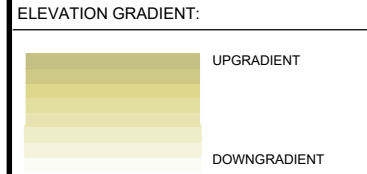


MAVERICKS PAD HYDROLOGY MAP



- LEGEND:
- OIL AND GAS LOCATION
 - WORKING PAD SURFACE
 - - - 2640' WORKING PAD SURFACE BUFFER
 - - - STREAM / DITCH
 - DRAINAGE DIRECTION
 - WATER WELL
 - WETLAND

NEAREST SURFACE WATER FEATURES:
(AS MEASURED FROM NEAREST)

	FROM WORKING PAD SURFACE	FROM OIL & GAS LOCATION	WATER FEATURE DESCRIPTION
SURFACE WATER	±3503' SW	±3666' SW	FARMED PALUSTRINE WETLAND
DOWNGRAIENT SURFACE WATER OF THE STATE	±3503' SW	±3666' SW	FARMED PALUSTRINE WETLAND

WATER FEATURES:
(AS MEASURED FROM THE WORKING PAD SURFACE)

1	WATER WELL (DWR)	±2172' NW
---	------------------	-----------

NOTES:

- THERE ARE NO PUBLIC WATER SYSTEMS FACILITIES, PWS INTAKES <15 MILES DOWNSTREAM, OR RULE 411 BUFFER ZONES WITHIN THE 2,640' RADIUS.

DATA SOURCE:
TOPO: GOOGLE
SURFACE WATER FEATURES: CDOT
WETLANDS: USFWS
WATER WELLS: COLORADO DWR

DISCLAIMER:
THIS PLOT DOES NOT REPRESENT A MONUMENTED LAND SURVEY AND SHOULD NOT BE RELIED UPON TO DETERMINE BOUNDARY LINES, PROPERTY OWNERSHIP OR OTHER PROPERTY INTERESTS. PARCEL LINES, IF DEPICTED HAVE NOT BEEN FIELD VERIFIED AND MAY BE BASED UPON PUBLICLY AVAILABLE DATA THAT ALSO HAS NOT BEEN INDEPENDENTLY VERIFIED.

PUBLICLY AVAILABLE DATA SOURCES HAVE NOT BEEN INDEPENDENTLY VERIFIED BY ASCENT.



ASCENT GEOMATICS SOLUTIONS
8620 WOLFF COURT
WESTMINSTER, CO 80031
(303) 928-7128

PREPARED FOR:



BISON IV OPERATING LLC
518 17TH STREET, SUITE 1800
DENVER, CO 80202
(720) 644-8997

SHEET NAME:
HYDROLOGY MAP

SURFACE LOCATION:
NW 1/4 NW 1/4 SECTION 31
T8N R61W, 6TH P.M.
WELD COUNTY, COLORADO

DRFT	CHK	DATE
CSG	DM	10/15/24

REVISION DESCRIPTION

REV.	ISSUED FOR PERMIT
0	

DRAWING DATE:
10/15/24

DRAFTED BY:
CSG

SHEET NO.
01 OF 01

