

MAVERICKS PAD LOCATION PICTURES



VIEW NORTH



VIEW EAST



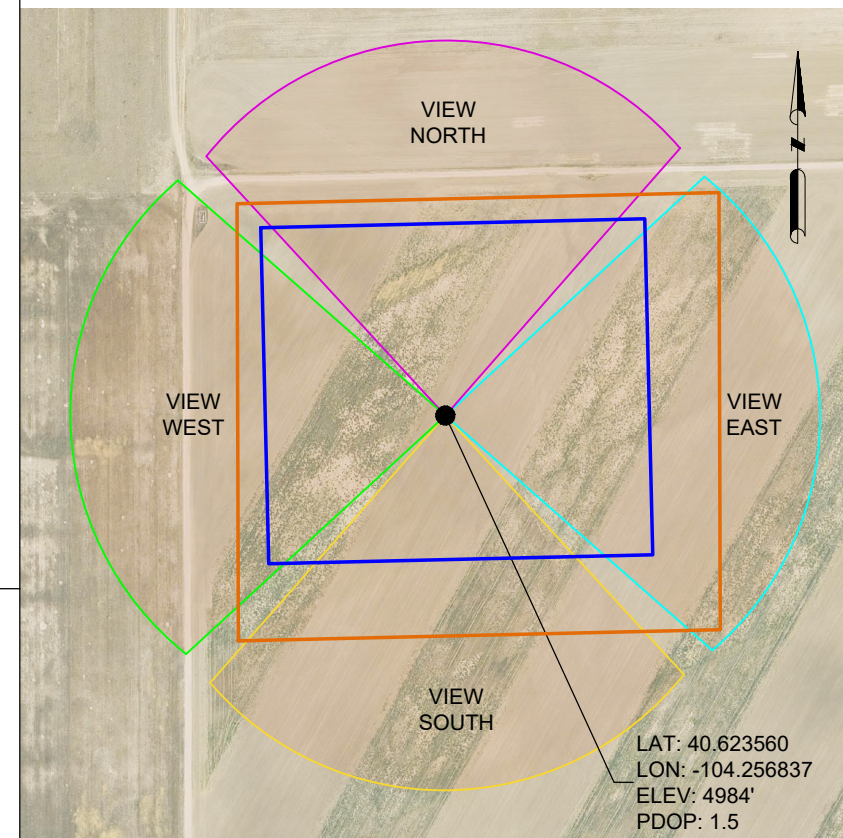
VIEW SOUTH



VIEW WEST

LEGEND:

- OIL AND GAS LOCATION
- WORKING PAD SURFACE
- REFERENCE POINT
- FIELD OF VIEW - NORTH
- FIELD OF VIEW - WEST
- FIELD OF VIEW - EAST
- FIELD OF VIEW - SOUTH



ALL PICTURES WERE TAKEN AT THE
JAWS 8-61 31-18-11 WELL LOCATION ON 09/25/2024

DATA SOURCE:
AERIAL IMAGERY: NAIP 2023

PUBLICLY AVAILABLE DATA SOURCES HAVE NOT BEEN INDEPENDENTLY VERIFIED BY ASCENT.

DISCLAIMER:
THIS PLOT DOES NOT REPRESENT A MONUMENTED LAND SURVEY AND SHOULD NOT BE RELIED UPON TO DETERMINE BOUNDARY LINES, PROPERTY OWNERSHIP OR OTHER PROPERTY INTERESTS. PARCEL LINES, IF DEPICTED HAVE NOT BEEN FIELD VERIFIED AND MAY BE BASED UPON PUBLICLY AVAILABLE DATA THAT ALSO HAS NOT BEEN INDEPENDENTLY VERIFIED.



ASCENT GEOMATICS SOLUTIONS
8620 WOLFF COURT
WESTMINSTER, CO 80031
(303) 928-7128

PREPARED FOR:



BISON IV OPERATING LLC
518 17TH STREET, SUITE 1800
DENVER, CO 80202
(720) 644-8997

SHEET NAME:
LOCATION PICTURES
SURFACE LOCATION:
NW 1/4 NW 1/4 SECTION 31
T8N R61W, 6TH P.M.
WELD COUNTY, COLORADO

DRFT	CHK	DATE
CSG	DM	10/15/24

REV.	REVISION DESCRIPTION
0	ISSUED FOR PERMIT

DRAWING DATE:
10/15/24

DRAFTED BY:
CSG

SHEET NO.
01 OF 02

MAVERICKS PAD LOCATION PICTURES



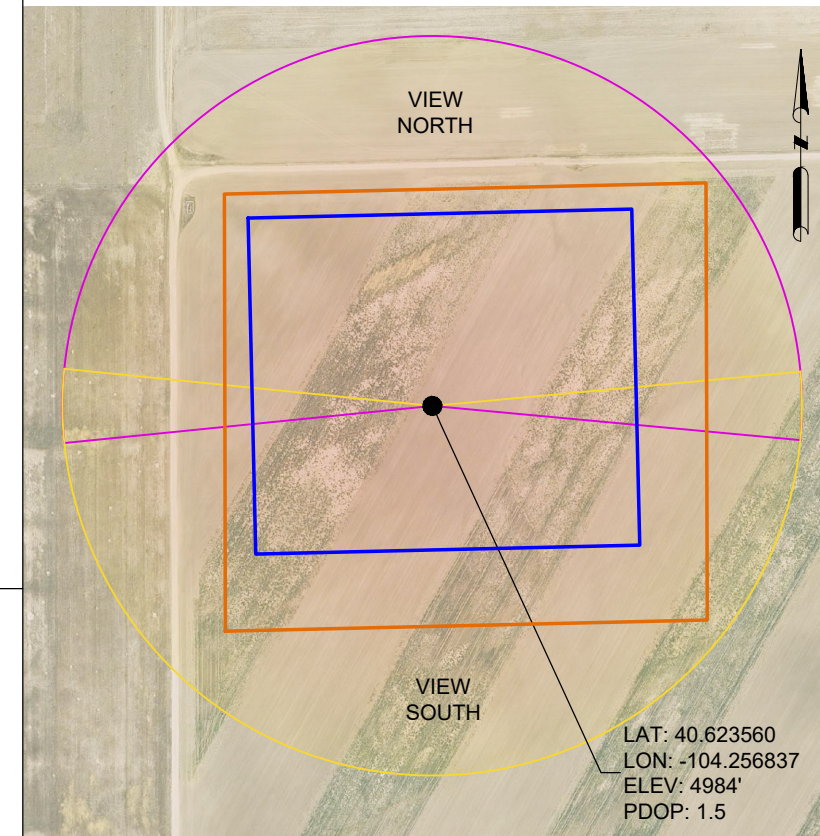
PANORAMIC VIEW NORTH



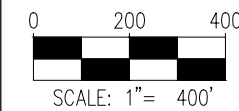
PANORAMIC VIEW SOUTH

LEGEND:

- OIL AND GAS LOCATION
- WORKING PAD SURFACE
- REFERENCE POINT
- FIELD OF VIEW - NORTH
- FIELD OF VIEW - SOUTH



LAT: 40.623560
LON: -104.256837
ELEV: 4984'
PDOP: 1.5



ALL PICTURES WERE TAKEN AT THE
JAWS 8-61 31-18-11 WELL LOCATION ON 09/25/2024

DATA SOURCE:
AERIAL IMAGERY: NAIP 2023

PUBLICLY AVAILABLE DATA SOURCES HAVE NOT BEEN INDEPENDENTLY VERIFIED BY ASCENT.

DISCLAIMER:
THIS PLOT DOES NOT REPRESENT A MONUMENTED LAND SURVEY AND SHOULD NOT BE RELIED UPON TO DETERMINE BOUNDARY LINES, PROPERTY OWNERSHIP OR OTHER PROPERTY INTERESTS. PARCEL LINES, IF DEPICTED HAVE NOT BEEN FIELD VERIFIED AND MAY BE BASED UPON PUBLICLY AVAILABLE DATA THAT ALSO HAS NOT BEEN INDEPENDENTLY VERIFIED.



ASCENT GEOMATICS SOLUTIONS
8620 WOLFF COURT
WESTMINSTER, CO 80031
(303) 928-7128

PREPARED FOR:



BISON IV OPERATING LLC
518 17TH STREET, SUITE 1800
DENVER, CO 80202
(720) 644-8997

SHEET NAME:

LOCATION PICTURES

SURFACE LOCATION:

NW 1/4 NW 1/4 SECTION 31
T8N R61W, 6TH P.M.
WELD COUNTY, COLORADO

DRFT	DATE	CHK	DATE
CSG	10/15/24	DM	10/15/24

REV.	REVISION DESCRIPTION
0	ISSUED FOR PERMIT

DRAWING DATE:
10/15/24

DRAFTED BY:
CSG

SHEET NO.
02 OF 02