



FIGURES

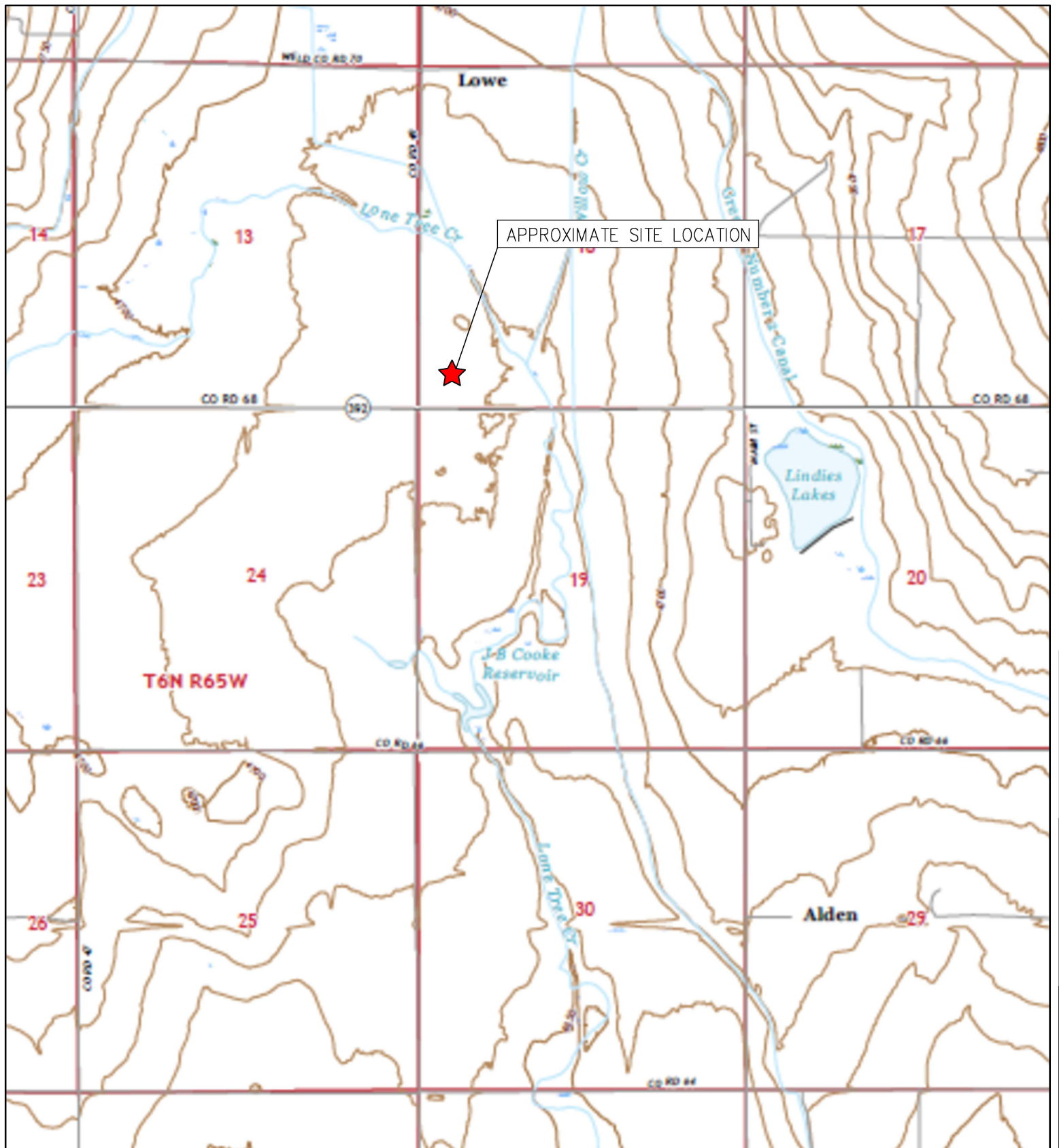
Figure 1: Topographic Site Location Map

Figure 2: Aerial Site Location Map

Figure 3: Soil Analytical Map

Figure 4: Metals in Soil Map

Figure 5: Background Metals in Soil Map



TOPOGRAPHIC SITE LOCATION MAP
 WPF III #A18-13A
 SITE ASSESSMENT
 40.480489 / -104.599693
 SW¼ SW¼ SEC.18 T6N R64W 6PM
 WELD COUNTY, COLORADO
 API # 05-123-13197
 REMEDIATION # 25040

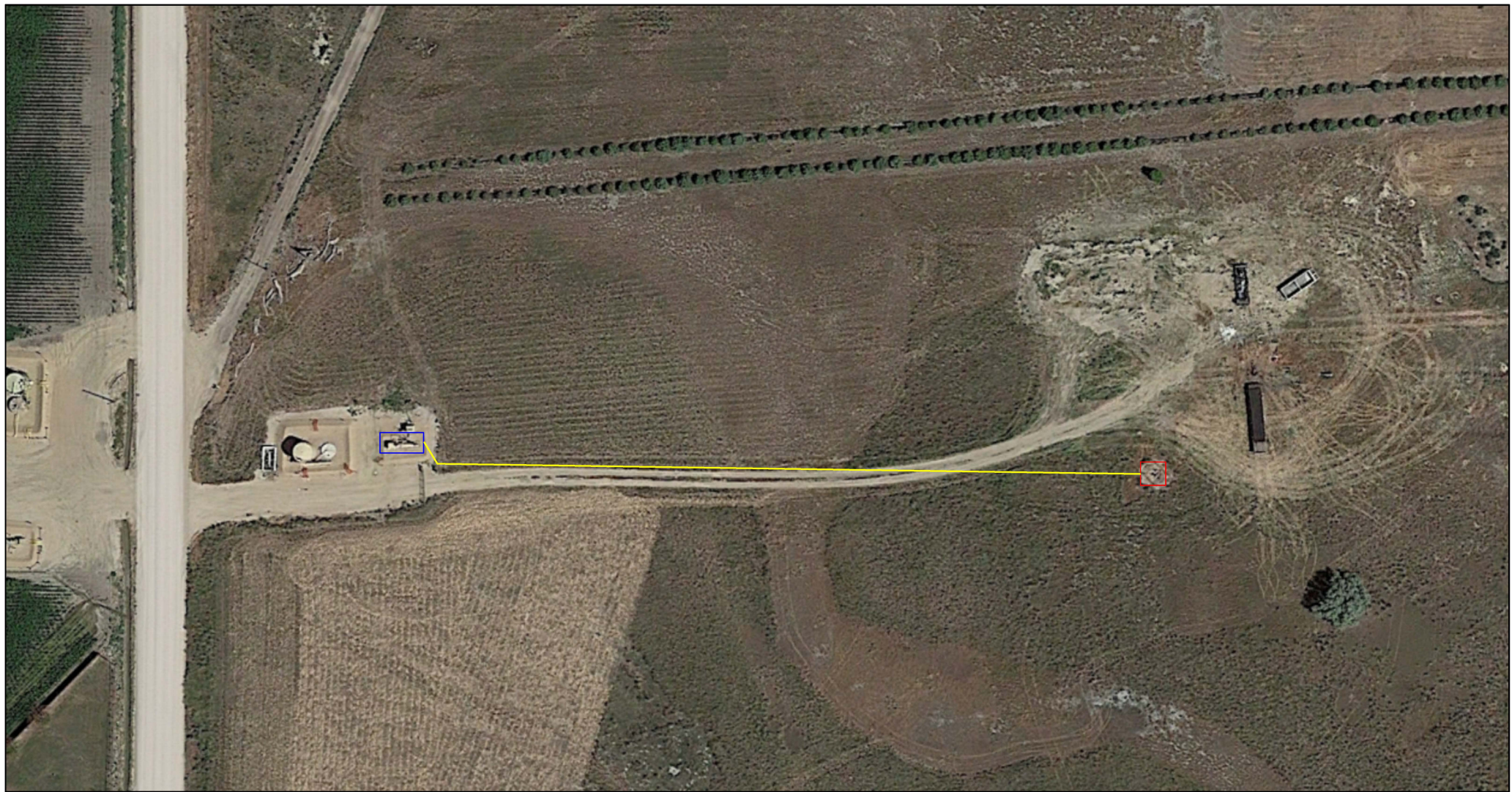


EAGLE
 ENVIRONMENTAL
 CONSULTING, INC.

8000 W 44th Ave, Wheat Ridge, CO 80033
 Ph: 303-433-0479 · F: 303-325-5449

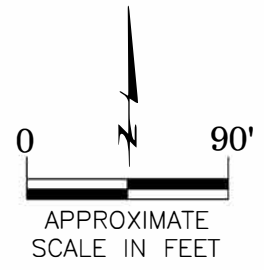
SOURCE: USGS 7.5 MINUTE TOPOGRAPHIC MAP,
 KERSEY, CO QUADRANGLE 2022

FIGURE 1



LEGEND

- FORMER WPF III #A18-13A WELLHEAD (PLUGGED AND ABANDONED)
- ASSOCIATED SEPARATOR
- APPROXIMATE FLOWLINE LOCATION



AERIAL SITE LOCATION MAP
 WPF III #A18-13A
 SITE ASSESSMENT
 40.480489 / -104.599693
 SW¼ SW¼ SEC.18 T6N R64W 6PM
 WELD COUNTY, COLORADO
 API # 05-123-13197
 REMEDIATION # 25040

DRAWN BY:
IM

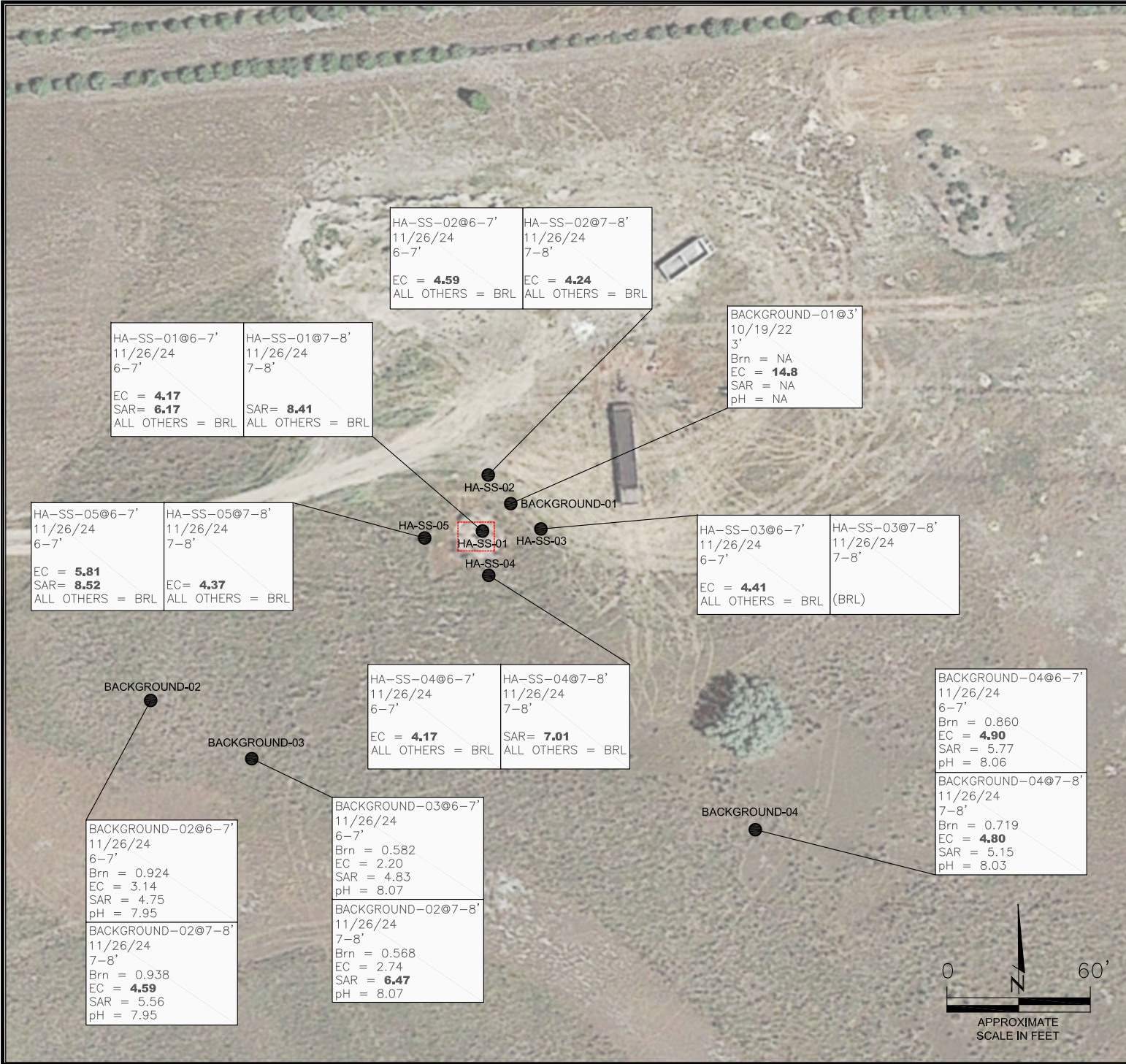
FIG. NO.
2



EAGLE

ENVIRONMENTAL
CONSULTING, INC.

8000 W 44th Ave, Wheat Ridge, CO 80033
Ph: 303-433-0479 · F: 303-325-5449



LEGEND

- INITIAL ASSESSMENT BOUNDARIES
- APPROXIMATE LOCATION OF SOIL SAMPLES SUBMITTED FOR LABORATORY ANALYSIS

PARAMETERS

SAMPLE LOCATION	
DATE	
DEPTH (FEET)	
B	= BENZENE (mg/kg)
T	= TOLUENE (mg/kg)
E	= ETHYLBENZENE (mg/kg)
X	= TOTAL XYLENES (mg/kg)
G	= TPH-GRO (mg/kg)
D	= TPH-DRO (mg/kg)
R	= TPH-RRO (mg/kg)
1,2,4-TMB	= 1,2,4 TRIMETHYLBENZENE (mg/kg)
1,3,5-TMB	= 1,3,5 TRIMETHYLBENZENE (mg/kg)
Brn	= BORON (mg/L)
EC	= SPECIFIC CONDUCTANCE (mmhos/cm)
SAR	= SODIUM ADSORPTION RATIO
pH	= pH (pH UNITS)
POLYCYCLIC AROMATIC HYDROCARBONS (PAHs) (mg/kg)	

mg/kg = MILLIGRAMS PER KILOGRAM
 mg/L = MILLIGRAMS PER LITER
 mmhos/cm = MILLIMHOS PER CENTIMETER

NA - NOT ANALYZED

BRL = BELOW REGULATORY LIMITS

(BRL) = ALL VALUES BELOW REGULATORY LIMITS

TPH-GRO = TOTAL PETROLEUM HYDROCARBONS - GASOLINE RANGE ORGANICS
 TPH-DRO = TOTAL PETROLEUM HYDROCARBONS - DIESEL RANGE ORGANICS
 TPH-RRO = TOTAL PETROLEUM HYDROCARBONS - RESIDUAL RANGE ORGANICS

NOTES:
 VALUES PRESENTED IN **BOLD** EXCEED ECMC TABLE 915-1 REGULATORY LIMITS.

ECMC = ENERGY & CARBON MANAGEMENT COMMISSION

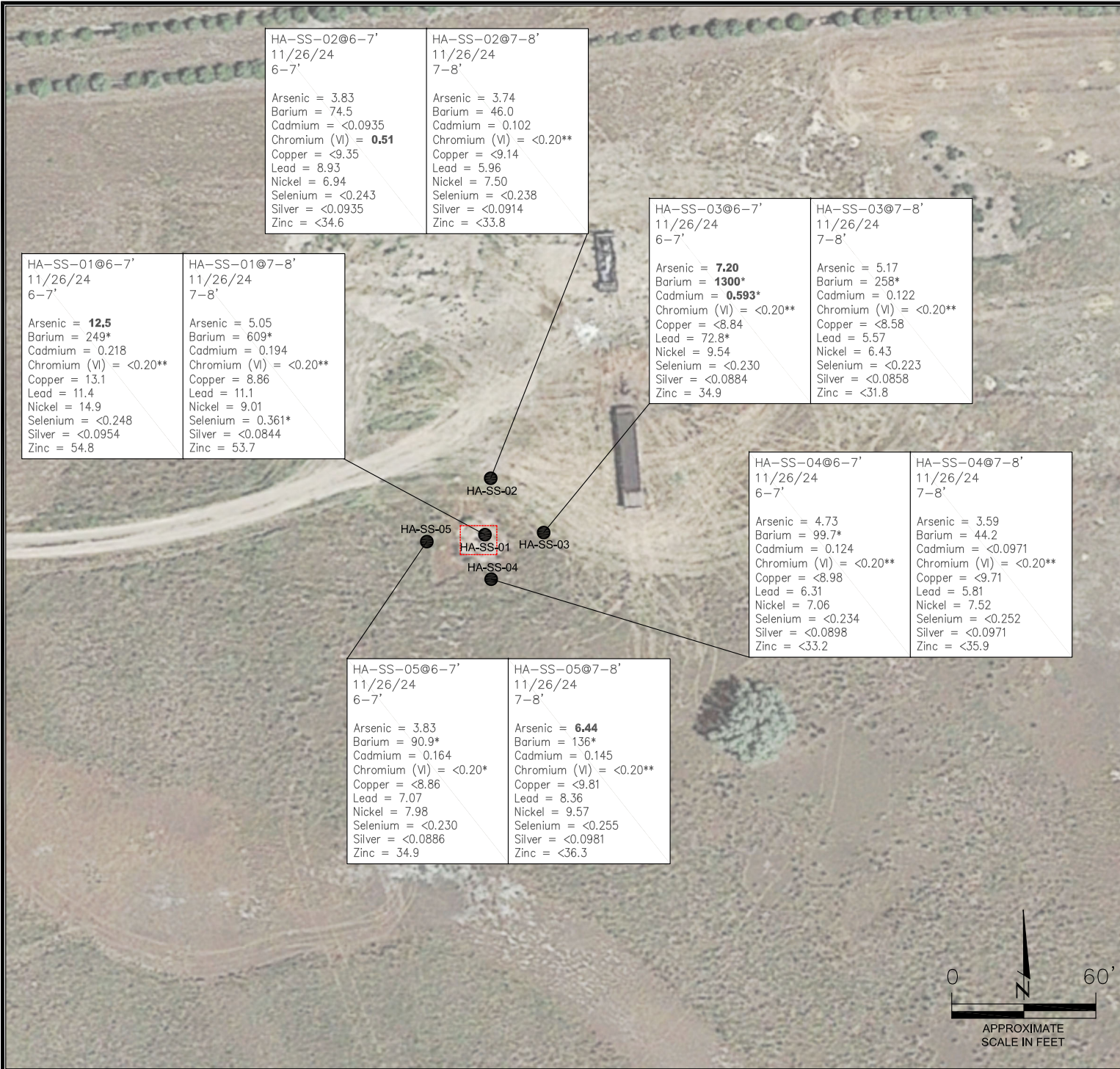
SOIL ANALYTICAL MAP
 WPF III #A18-13A
 SITE ASSESSMENT
 40.480489 / -104.599693
 SW¼ SW¼ SEC.18 T6N R64W 6PM
 WELD COUNTY, COLORADO
 API # 05-123-13197
 REMEDIATION # 25040

DRAWN BY:
 RS

FIG. NO. 3



EAGLE
 ENVIRONMENTAL
 CONSULTING, INC.
 8000 W 44th Ave, Wheat Ridge, CO 80033
 Ph: 303-433-0479 • F: 303-325-5449



HA-SS-02@6-7' 11/26/24 6-7' Arsenic = 3.83 Barium = 74.5 Cadmium = <0.0935 Chromium (VI) = 0.51 Copper = <9.35 Lead = 8.93 Nickel = 6.94 Selenium = <0.243 Silver = <0.0935 Zinc = <34.6	HA-SS-02@7-8' 11/26/24 7-8' Arsenic = 3.74 Barium = 46.0 Cadmium = 0.102 Chromium (VI) = <0.20** Copper = <9.14 Lead = 5.96 Nickel = 7.50 Selenium = <0.238 Silver = <0.0914 Zinc = <33.8
---	---

HA-SS-01@6-7' 11/26/24 6-7' Arsenic = 12.5 Barium = 249* Cadmium = 0.218 Chromium (VI) = <0.20** Copper = 13.1 Lead = 11.4 Nickel = 14.9 Selenium = <0.248 Silver = <0.0954 Zinc = 54.8	HA-SS-01@7-8' 11/26/24 7-8' Arsenic = 5.05 Barium = 609* Cadmium = 0.194 Chromium (VI) = <0.20** Copper = 8.86 Lead = 11.1 Nickel = 9.01 Selenium = 0.361* Silver = <0.0844 Zinc = 53.7
--	---

HA-SS-03@6-7' 11/26/24 6-7' Arsenic = 7.20 Barium = 1300* Cadmium = 0.593* Chromium (VI) = <0.20** Copper = <8.84 Lead = 72.8* Nickel = 9.54 Selenium = <0.230 Silver = <0.0884 Zinc = 34.9	HA-SS-03@7-8' 11/26/24 7-8' Arsenic = 5.17 Barium = 258* Cadmium = 0.122 Chromium (VI) = <0.20** Copper = <8.58 Lead = 5.57 Nickel = 6.43 Selenium = <0.223 Silver = <0.0858 Zinc = <31.8
--	---

HA-SS-04@6-7' 11/26/24 6-7' Arsenic = 4.73 Barium = 99.7* Cadmium = 0.124 Chromium (VI) = <0.20** Copper = <8.98 Lead = 6.31 Nickel = 7.06 Selenium = <0.234 Silver = <0.0898 Zinc = <33.2	HA-SS-04@7-8' 11/26/24 7-8' Arsenic = 3.59 Barium = 44.2 Cadmium = <0.0971 Chromium (VI) = <0.20** Copper = <9.71 Lead = 5.81 Nickel = 7.52 Selenium = <0.252 Silver = <0.0971 Zinc = <35.9
--	---

HA-SS-05@6-7' 11/26/24 6-7' Arsenic = 3.83 Barium = 90.9* Cadmium = 0.164 Chromium (VI) = <0.20* Copper = <8.86 Lead = 7.07 Nickel = 7.98 Selenium = <0.230 Silver = <0.0886 Zinc = 34.9	HA-SS-05@7-8' 11/26/24 7-8' Arsenic = 6.44 Barium = 136* Cadmium = 0.145 Chromium (VI) = <0.20** Copper = <9.81 Lead = 8.36 Nickel = 9.57 Selenium = <0.255 Silver = <0.0981 Zinc = <36.3
--	--

LEGEND

- INITIAL ASSESSMENT BOUNDARIES
- APPROXIMATE LOCATION OF SOIL SAMPLES SUBMITTED FOR LABORATORY ANALYSIS

PARAMETERS

SAMPLE LOCATION DATE SAMPLE COLLECTED APPROXIMATE DEPTH Arsenic = (mg/kg) Barium = (mg/kg) Cadmium = (mg/kg) Chromium (VI) = (mg/kg) Copper = (mg/kg) Lead = (mg/kg) Nickel = (mg/kg) Selenium = (mg/kg) Silver = (mg/kg) Zinc = (mg/kg)
--

mg/kg = MILLIGRAMS PER KILOGRAM

NOTES:
 VALUES PRESENTED WITH A LESS THAN SYMBOL (<) DID NOT CONTAIN CONCENTRATIONS AT/OR ABOVE LABORATORY REPORTING LIMITS AND/OR MINIMUM DETECTION LIMITS.

VALUES PRESENTED IN **BOLD** EXCEED ECMC TABLE 915-1 REGULATORY LIMITS.

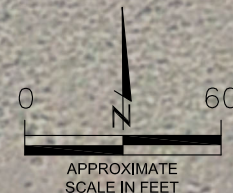
*VALUES EXCEED ECMC TABLE 915-1 PROTECTION OF GROUNDWATER SOIL SCREENING LEVELS.

**ACHIEVABLE PRACTICAL QUANTITATIVE LIMITS FOR HEXAVALENT CHROMIUM (Cr VI) IN SOILS IS IN THE RANGE OF 0.1 TO 1 mg/kg.

ELEVATED METALS ARE NATURALLY OCCURRING IN COLORADO. LOCAL CLEAN-UP LEVELS ARE 1.25*BACKGROUND HIGH, WHERE APPLICABLE.

ECMC = ENERGY & CARBON MANAGEMENT COMMISSION

METALS IN SOIL MAP
 WPF III #A18-13A
 SITE ASSESSMENT
 40.480489 / -104.599693
 SW¼ SW¼ SEC.18 T6N R64W 6PM
 WELD COUNTY, COLORADO
 API # 05-123-13197
 REMEDIATION # 25040

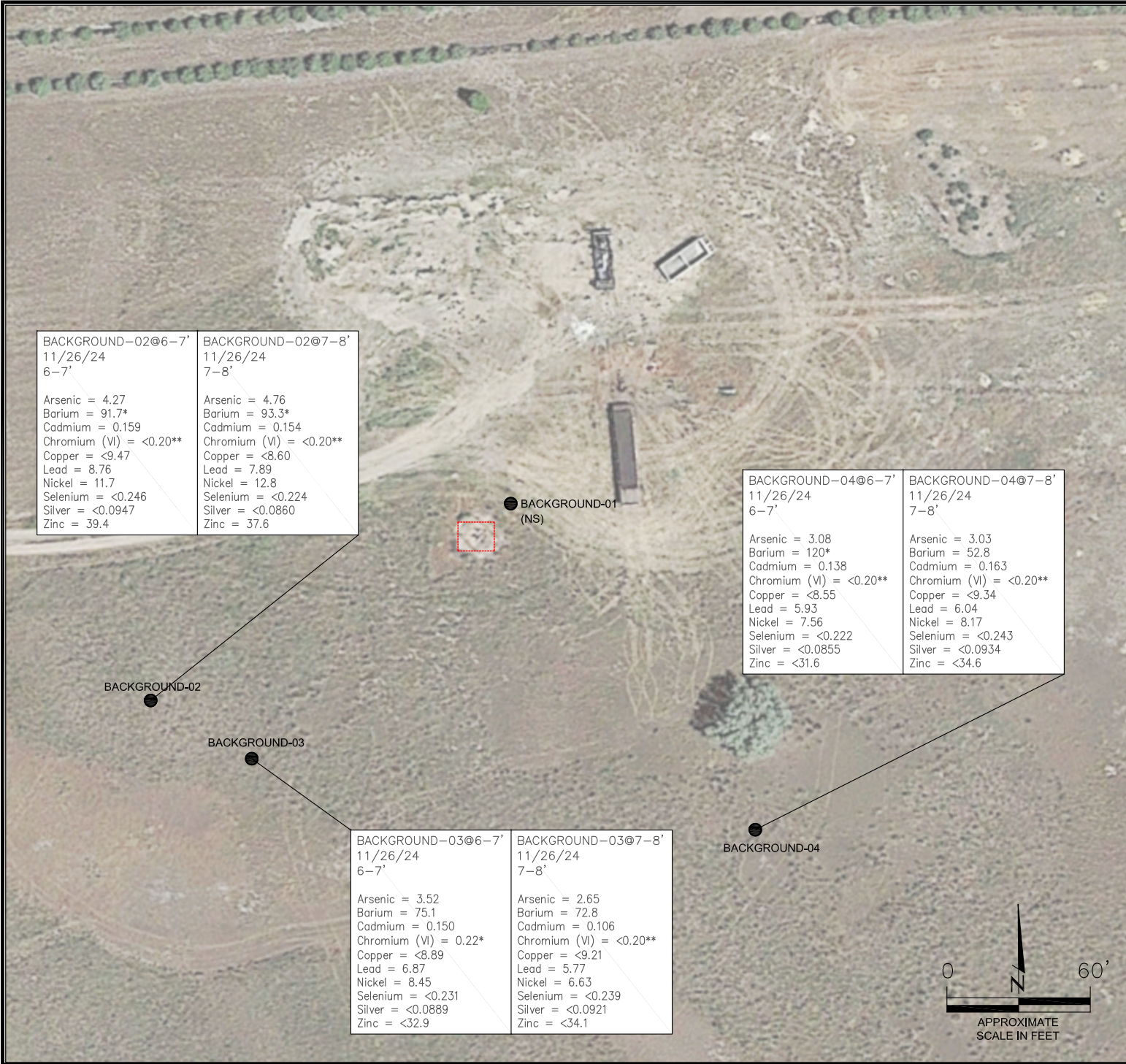


DRAWN BY:
RS

FIG. NO. 4



EAGLE
 ENVIRONMENTAL
 CONSULTING, INC.
 8000 W 44th Ave, Wheat Ridge, CO 80033
 Ph: 303-433-0479 • F: 303-325-5449



BACKGROUND-02@6-7' 11/26/24 6-7'	BACKGROUND-02@7-8' 11/26/24 7-8'
Arsenic = 4.27 Barium = 91.7* Cadmium = 0.159 Chromium (VI) = <0.20** Copper = <9.47 Lead = 8.76 Nickel = 11.7 Selenium = <0.246 Silver = <0.0947 Zinc = 39.4	Arsenic = 4.76 Barium = 93.3* Cadmium = 0.154 Chromium (VI) = <0.20** Copper = <8.60 Lead = 7.89 Nickel = 12.8 Selenium = <0.224 Silver = <0.0860 Zinc = 37.6

BACKGROUND-04@6-7' 11/26/24 6-7'	BACKGROUND-04@7-8' 11/26/24 7-8'
Arsenic = 3.08 Barium = 120* Cadmium = 0.138 Chromium (VI) = <0.20** Copper = <8.55 Lead = 5.93 Nickel = 7.56 Selenium = <0.222 Silver = <0.0855 Zinc = <31.6	Arsenic = 3.03 Barium = 52.8 Cadmium = 0.163 Chromium (VI) = <0.20** Copper = <9.34 Lead = 6.04 Nickel = 8.17 Selenium = <0.243 Silver = <0.0934 Zinc = <34.6

BACKGROUND-03@6-7' 11/26/24 6-7'	BACKGROUND-03@7-8' 11/26/24 7-8'
Arsenic = 3.52 Barium = 75.1 Cadmium = 0.150 Chromium (VI) = 0.22* Copper = <8.89 Lead = 6.87 Nickel = 8.45 Selenium = <0.231 Silver = <0.0889 Zinc = <32.9	Arsenic = 2.65 Barium = 72.8 Cadmium = 0.106 Chromium (VI) = <0.20** Copper = <9.21 Lead = 5.77 Nickel = 6.63 Selenium = <0.239 Silver = <0.0921 Zinc = <34.1

LEGEND

- INITIAL ASSESSMENT BOUNDARIES
- APPROXIMATE LOCATION OF SOIL SAMPLES SUBMITTED FOR LABORATORY ANALYSIS

PARAMETERS

SAMPLE LOCATION
DATE SAMPLE COLLECTED
APPROXIMATE DEPTH
Arsenic = (mg/kg)
Barium = (mg/kg)
Cadmium = (mg/kg)
Chromium (VI) = (mg/kg)
Copper = (mg/kg)
Lead = (mg/kg)
Nickel = (mg/kg)
Selenium = (mg/kg)
Silver = (mg/kg)
Zinc = (mg/kg)

mg/kg = MILLIGRAMS PER KILOGRAM

(NS) - NOT SAMPLED

NOTES:
VALUES PRESENTED WITH A LESS THAN SYMBOL (<) DID NOT CONTAIN CONCENTRATIONS AT/OR ABOVE LABORATORY REPORTING LIMITS AND/OR MINIMUM DETECTION LIMITS.

VALUES PRESENTED IN **BOLD** EXCEED ECMC TABLE 915-1 REGULATORY LIMITS.

*VALUES EXCEED ECMC TABLE 915-1 PROTECTION OF GROUNDWATER SOIL SCREENING LEVELS.

**ACHIEVABLE PRACTICAL QUANTITATIVE LIMITS FOR HEXAVALENT CHROMIUM (Cr VI) IN SOILS IS IN THE RANGE OF 0.1 TO 1 mg/kg.

ELEVATED METALS ARE NATURALLY OCCURRING IN COLORADO. LOCAL CLEAN-UP LEVELS ARE 1.25*BACKGROUND HIGH, WHERE APPLICABLE.

ECMC = ENERGY & CARBON MANAGEMENT COMMISSION

BACKGROUND METALS IN SOIL MAP

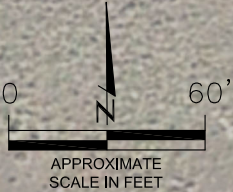
WPF III #A18-13A
SITE ASSESSMENT
40.480489 / -104.599693
SW¼ SW¼ SEC.18 T6N R64W 6PM
WELD COUNTY, COLORADO
API # 05-123-13197
REMEDATION # 25040

DRAWN BY:
RS

FIG. NO. 5



EAGLE
ENVIRONMENTAL
CONSULTING, INC.
8000 W 44th Ave, Wheat Ridge, CO 80033
Ph: 303-433-0479 • F: 303-325-5449





TABLES

Table 1: Field Data Summary Table

Table 2: Summary of Volatile Organic Soil Chemistry Data

Table 3: Summary of Polycyclic Aromatic Hydrocarbon Soil Chemistry Data

Table 4: Summary of Soil Suitability for Reclamation

Table 5: Summary of Metals in Soil Chemistry Data

TABLE 1
FIELD DATA SUMMARY TABLE
NOBLE ENERGY 100322
WPF III #A18-13A, WELD COUNTY, COLORADO
REM # 25040

Sample ID	Sample Date	Depth (ft)	GPS Data		VOC Concentration (ppm)
			Latitude/Longitude		
WH-SS-01 @ 5'	10/19/2022	5	40.480501	-104.599686	1.9
WH-SS-02 @ 5'	10/19/2022	5	40.480488	-104.599662	1.9
WH-SS-03 @ 5'	10/19/2022	5	40.480473	-104.599687	2.0
WH-SS-04 @ 5'	10/19/2022	5	40.480485	-104.599710	2.1
WH-FS-01 @ 6'	10/19/2022	6	40.480493	-104.599686	2.9
HA-SS-01 @ 6-7'	11/26/2024	6-7	40.480496	-104.599671	1.1
HA-SS-01 @ 7-8'	11/26/2024	7-8	40.480496	-104.599671	0.8
HA-SS-02 @ 6-7'	11/26/2024	6-7	40.480554	-104.599665	1.0
HA-SS-02 @ 7-8'	11/26/2024	7-8	40.480554	-104.599665	1.0
HA-SS-03 @ 6-7'	11/26/2024	6-7	40.480496	-104.599598	1.4
HA-SS-03 @ 7-8'	11/26/2024	7-8	40.480496	-104.599598	1.8
HA-SS-04 @ 6-7'	11/26/2024	6-7	40.480459	-104.599668	1.4
HA-SS-04 @ 7-8'	11/26/2024	7-8	40.480459	-104.599668	1.6
HA-SS-05 @ 6-7'	11/26/2024	6-7	40.480494	-104.599747	2.2
HA-SS-05 @ 7-8'	11/26/2024	7-8	40.480494	-104.599747	1.7
Background-01 @ 3'	10/19/2022	3	40.480514	-104.599642	1.2
Background-02 @ 6-7'	11/26/2024	6-7	40.480287	-104.600172	1.6
Background-02 @ 7-8'	11/26/2024	7-8	40.480287	-104.600172	1.5
Background-03 @ 6-7'	11/26/2024	6-7	40.480226	-104.600009	1.5
Background-03 @ 7-8'	11/26/2024	7-8	40.480226	-104.600009	1.1
Background-04 @ 6-7'	11/26/2024	6-7	40.480173	-104.599258	1.2
Background-04 @ 7-8'	11/26/2024	7-8	40.480173	-104.599258	1.4

1. Global Positioning System (GPS) data is provided in decimal degrees using North American Datum (NAD) 83 UTMZone 13 North.

2. Volatile organic compound (VOC) concentrations are measured in the field using a photoionization detector (PID).

PDOP = Position Dilution of Precision

ppm = Parts per million

in. = Inches

ft. = Feet

bgs = Below ground surface

TABLE 2
SUMMARY OF VOLATILE ORGANIC SOIL CHEMISTRY DATA
NOBLE ENERGY 100322
WPF III #A18-13A, WELD COUNTY, COLORADO
REM # 25040

Sample ID	Sample Date	Depth (ft)	Benzene (mg/kg)	Toluene (mg/kg)	Ethyl-Benzene (mg/kg)	Xylenes (mg/kg)	1,2,4-Trimethyl-Benzene (mg/kg)	1,3,5-Trimethyl-Benzene (mg/kg)	Naphthalene (mg/kg)	TPH (mg/kg)	TPH GRO (mg/kg)	TPH DRO (mg/kg)	TPH ORO (mg/kg)
ECMC Table 915-1 Limits (Residential SSL)			1.2	490	5.8	58	30	27	2	500	500**		
ECMC Table 915-1 Limits (Protection of Groundwater SSL)			0.0026	0.69	0.78	9.9	0.0081	0.0087	0.0038	500	500**		
WH-FS-01 @ 6'	10/19/2022	6	<0.00200	<0.00200	<0.00200	<0.00200	<0.00200	<0.00200	<0.00335	<500	<0.200	42.3	<100
HA-SS-01 @ 6-7'	11/26/2024	6-7	<0.00200	<0.00200	<0.00200	<0.00200	<0.00200	<0.00200	<0.00380	<500	<0.200	<25.0	<100
HA-SS-01 @ 7-8'	11/26/2024	7-8	<0.00200	<0.00200	<0.00200	<0.00200	<0.00200	<0.00200	<0.00380	<500	<0.200	<25.0	<100
HA-SS-02 @ 6-7'	11/26/2024	6-7	<0.00200	<0.00200	<0.00200	<0.00200	<0.00200	<0.00200	<0.00380	<500	<0.200	<25.0	<100
HA-SS-02 @ 7-8'	11/26/2024	7-8	<0.00200	<0.00200	<0.00200	<0.00200	<0.00200	<0.00200	<0.00380	<500	<0.200	<25.0	<100
HA-SS-03 @ 6-7'	11/26/2024	6-7	<0.00200	<0.00200	<0.00200	<0.00200	<0.00200	<0.00200	<0.00380	<500	<0.200	<25.0	<100
HA-SS-03 @ 7-8'	11/26/2024	7-8	<0.00200	<0.00200	<0.00200	<0.00200	<0.00200	<0.00200	<0.00380	<500	<0.200	<25.0	<100
HA-SS-04 @ 6-7'	11/26/2024	6-7	<0.00200	<0.00200	<0.00200	<0.00200	<0.00200	<0.00200	<0.00380	<500	<0.200	<25.0	<100
HA-SS-04 @ 7-8'	11/26/2024	7-8	<0.00200	<0.00200	<0.00200	<0.00200	<0.00200	<0.00200	<0.00380	<500	<0.200	<25.0	<100
HA-SS-05 @ 6-7'	11/26/2024	6-7	<0.00200	<0.00200	<0.00200	<0.00200	<0.00200	<0.00200	<0.00380	<500	<0.200	<25.0	<100
HA-SS-05 @ 7-8'	11/26/2024	7-8	<0.00200	<0.00200	<0.00200	<0.00200	<0.00200	<0.00200	<0.00380	<500	<0.200	<25.0	<100

1. Bold values are equal to or exceed the ECMC Table 915-1 limit(s)
 2. Red & blue highlighted soil analytical values indicate an exceedance of the referenced soil screening level (SSL)
 3. * Indicates laboratory minimum detection limit in excess of SSL
 4. ** Summation of GRO+DRO+ORO must be less than 500 mg/kg
- NA - Not analyzed

TABLE 3
SUMMARY OF POLYCYCLIC AROMATIC HYDROCARBON SOIL CHEMISTRY DATA
NOBLE ENERGY 100322
WPF III #A18-13A, WELD COUNTY, COLORADO
REM # 25040

Sample ID	Sample Date	Depth (ft)	Acenaphthene (mg/kg)	Anthracene (mg/kg)	Benzo (a) Anthracene (mg/kg)	Benzo (a) Pyrene (mg/kg)	Benzo (b) Fluoranthene (mg/kg)	Benzo (k) Fluoranthene (mg/kg)	Chrysene (mg/kg)	Dibenzo (a,h) Anthracene (mg/kg)	Fluoranthene (mg/kg)	Fluorene (mg/kg)	Indeno (1,2,3-cd) Pyrene (mg/kg)	Pyrene (mg/kg)	1-Methyl - Naphthalene (mg/kg)	2-Methyl- Naphthalene (mg/kg)
ECMC Table 915-1 Limits (Residential SSL)			360	1800	1.1	0.11	1.1	11	110	0.11	240	240	1.1	180	18	24
ECMC Table 915-1 Limits (Protection of Groundwater SSL)			0.55	5.8	0.011	0.24	0.3	2.9	9	0.096	8.9	0.54	0.98	1.3	0.006	0.019
WH-FS-01 @ 6'	10/19/2022	6	<0.00335	<0.00335	<0.00335	<0.00335	<0.00335	<0.00335	<0.00335	<0.00335	<0.00335	<0.00335	<0.00335	<0.00335	<0.00335	<0.00335
HA-SS-01 @ 6-7'	11/26/2024	6-7	<0.020	<0.020	<0.005	<0.020	<0.020	<0.020	<0.020	<0.020	<0.020	<0.020	<0.020	<0.020	<0.002	<0.002
HA-SS-01 @ 7-8'	11/26/2024	7-8	<0.020	<0.020	<0.005	<0.020	<0.020	<0.020	<0.020	<0.020	<0.020	<0.020	<0.020	<0.020	<0.002	<0.002
HA-SS-02 @ 6-7'	11/26/2024	6-7	<0.020	<0.020	<0.005	<0.020	<0.020	<0.020	<0.020	<0.020	<0.020	<0.020	<0.020	<0.020	<0.002	<0.002
HA-SS-02 @ 7-8'	11/26/2024	7-8	<0.020	<0.020	<0.005	<0.020	<0.020	<0.020	<0.020	<0.020	<0.020	<0.020	<0.020	<0.020	<0.002	<0.002
HA-SS-03 @ 6-7'	11/26/2024	6-7	<0.020	<0.020	<0.005	<0.020	<0.020	<0.020	<0.020	<0.020	<0.020	<0.020	<0.020	<0.020	<0.002	<0.002
HA-SS-03 @ 7-8'	11/26/2024	7-8	<0.020	<0.020	<0.005	<0.020	<0.020	<0.020	<0.020	<0.020	<0.020	<0.020	<0.020	<0.020	<0.002	<0.002
HA-SS-04 @ 6-7'	11/26/2024	6-7	<0.020	<0.020	<0.005	<0.020	<0.020	<0.020	<0.020	<0.020	<0.020	<0.020	<0.020	<0.020	<0.002	<0.002
HA-SS-04 @ 7-8'	11/26/2024	7-8	<0.020	<0.020	<0.005	<0.020	<0.020	<0.020	<0.020	<0.020	<0.020	<0.020	<0.020	<0.020	<0.002	<0.002
HA-SS-05 @ 6-7'	11/26/2024	6-7	<0.020	<0.020	<0.005	<0.020	<0.020	<0.020	<0.020	<0.020	<0.020	<0.020	<0.020	<0.020	<0.002	<0.002
HA-SS-05 @ 7-8'	11/26/2024	7-8	<0.020	<0.020	<0.005	<0.020	<0.020	<0.020	<0.020	<0.020	<0.020	<0.020	<0.020	<0.020	<0.002	<0.002

1. Bold values are equal to or exceed the ECMC Table 915-1 limit(s)
 2. Red & blue highlighted soil analytical values indicate an exceedance of the referenced soil screening level (SSL)
 3. * Indicates laboratory minimum detection limit in excess of SSL
- NA - Not analyzed

TABLE 4
SUMMARY OF SOIL SUITABILITY FOR RECLAMATION
NOBLE ENERGY 100322
WPF III #A18-13A, WELD COUNTY, COLORADO
REM # 25040

Sample ID	Sample Date	Depth (ft)	pH (Standard Units)	EC (mmhos/cm)	SAR (Standard Units)	Boron (mg/L)
ECMC Table 915-1 Soil Suitability Limits			6 - 8.3	<4	<6	2
WH-FS-01 @ 6'	10/19/2022	6	7.95	4.2	3.52	1.3
HA-SS-01 @ 6-7'	11/26/2024	6-7	7.98	4.17	6.17	1.48
HA-SS-01 @ 7-8'	11/26/2024	7-8	8.20	2.71	8.41	1.19
HA-SS-02 @ 6-7'	11/26/2024	6-7	7.94	4.59	5.28	0.588
HA-SS-02 @ 7-8'	11/26/2024	7-8	7.94	4.24	4.59	0.574
HA-SS-03 @ 6-7'	11/26/2024	6-7	7.98	4.41	5.62	0.865
HA-SS-03 @ 7-8'	11/26/2024	7-8	8.10	2.79	4.74	0.454
HA-SS-04 @ 6-7'	11/26/2024	6-7	8.00	4.17	5.87	0.725
HA-SS-04 @ 7-8'	11/26/2024	7-8	8.25	2.17	7.01	0.503
HA-SS-05 @ 6-7'	11/26/2024	6-7	7.99	5.81	8.52	1.10
HA-SS-05 @ 7-8'	11/26/2024	7-8	7.96	4.37	5.80	0.807
Background-01 @ 3'	10/19/2022	3	NA	14.8	NA	NA
Background-02 @ 6-7'	11/26/2024	6-7	7.95	3.14	4.75	0.924
Background-02 @ 7-8'	11/26/2024	7-8	7.95	4.59	5.56	0.938
Background-03 @ 6-7'	11/26/2024	6-7	8.07	2.20	4.83	0.582
Background-03 @ 7-8'	11/26/2024	7-8	8.07	2.74	6.47	0.568
Background-04 @ 6-7'	11/26/2024	6-7	8.06	4.90	5.77	0.860
Background-04 @ 7-8'	11/26/2024	7-8	8.03	4.80	5.15	0.719
Maximum Background Concentration			8.07	14.8	6.47	0.938

1. Bold values are equal to or exceed the ECMC Table 915-1 limit(s)
 2. Blue highlighted soil analytical values indicate a regulatory exceedance
- NA - Not analyzed

TABLE 5
SUMMARY OF METALS IN SOIL CHEMISTRY DATA
NOBLE ENERGY 100322
WPF III #A18-13A, WELD COUNTY, COLORADO
REM # 25040

Sample ID	Sample Date	Depth (ft)	Arsenic (mg/kg)	Barium (mg/kg)	Cadmium (mg/kg)	Chromium (VI) (mg/kg)	Copper (mg/kg)	Lead (mg/kg)	Nickel (mg/kg)	Selenium (mg/kg)	Silver (mg/kg)	Zinc (mg/kg)
ECMC Table 915-1 Limits (Residential SSL)			0.68	15000	71	0.3	3100	400	1500	390	390	23000
ECMC Table 915-1 Limits (Protection of Groundwater SSL)			0.29	82	0.38	0.00067	46	14	26	0.26	0.8	370
HA-SS-01 @ 6-7'	11/26/2024	6-7	12.5	249	0.218	<0.20*	13.1	11.4	14.9	<0.248	<0.0954	54.8
HA-SS-01 @ 7-8'	11/26/2024	7-8	5.05	609	0.194	<0.20*	8.86	11.1	9.01	0.361	<0.0844	53.7
HA-SS-02 @ 6-7'	11/26/2024	6-7	3.83	74.5	<0.0935	0.51	<9.35	8.93	6.94	<0.243	<0.0935	<34.6
HA-SS-02 @ 7-8'	11/26/2024	7-8	3.74	46.0	0.102	<0.20*	<9.14	5.96	7.50	<0.238	<0.0914	<33.8
HA-SS-03 @ 6-7'	11/26/2024	6-7	7.20	1300	0.593	<0.20*	<8.84	72.8	9.54	<0.230	<0.0884	34.9
HA-SS-03 @ 7-8'	11/26/2024	7-8	5.17	258	0.122	<0.20*	<8.58	5.57	6.43	<0.223	<0.0858	<31.8
HA-SS-04 @ 6-7'	11/26/2024	6-7	4.73	99.7	0.124	<0.20*	<8.98	6.31	7.06	<0.234	<0.0898	<33.2
HA-SS-04 @ 7-8'	11/26/2024	7-8	3.59	44.2	<0.0971	<0.20*	<9.71	5.81	7.52	<0.252	<0.0971	<35.9
HA-SS-05 @ 6-7'	11/26/2024	6-7	3.83	90.9	0.164	<0.20*	<8.86	7.07	7.98	<0.230	<0.0886	34.9
HA-SS-05 @ 7-8'	11/26/2024	7-8	6.44	136	0.145	<0.20*	<9.81	8.36	9.57	<0.255	<0.0981	<36.3
Background-02 @ 6-7'	11/26/2024	6-7	4.27	91.7	0.159	<0.20*	<9.47	8.76	11.7	<0.246	<0.0947	39.4
Background-02 @ 7-8'	11/26/2024	7-8	4.76	93.3	0.154	<0.20*	<8.60	7.89	12.8	<0.224	<0.0860	37.6
Background-03 @ 6-7'	11/26/2024	6-7	3.52	75.1	0.150	0.22	<8.89	6.87	8.45	<0.231	<0.0889	<32.9
Background-03 @ 7-8'	11/26/2024	7-8	2.65	72.8	0.106	<0.20*	<9.21	5.77	6.63	<0.239	<0.0921	<34.1
Background-04 @ 6-7'	11/26/2024	6-7	3.08	120	0.138	<0.20*	<8.55	5.93	7.56	<0.222	<0.0855	<31.6
Background-04 @ 7-8'	11/26/2024	7-8	3.03	52.8	0.163	<0.20*	<9.34	6.04	8.17	<0.243	<0.0934	<34.6
Maximum Background Concentration			4.76	120	0.163	0.22		8.76	12.8			39.4
125% Maximum Background Concentration			5.95	150	0.204	0.28		11.0	16.0			49.3

1. Bold values are equal to or exceed the ECMC Table 915-1 limit(s)

2. Red & blue highlighted soil analytical values indicate an exceedance of the referenced soil screening level (SSL)

* Indicates laboratory minimum detection limit in excess of SSL

NA - Not analyzed




ATTACHMENT A

Soil Boring Logs

DEPTH (FT)	LITHOLOGY	SAMPLE				OVM/OVA (PPM)	BLOW COUNT (per 0.5 FT)	DEPTH (FT)	WELL CONSTRUCTION DETAIL	COMMENTS
	DESCRIPTION	GRAPHIC LOG	TYPE	NUMBER	RECOVERY %					
0	(0-1') clayey SAND, light brown, dry, very loose, fine grained, poorly-graded with ~10% clay, N/O, N/S	SC HA CL	HA	1	100	N/A	N/A			
1-4	(1-4') sandy CLAY - brown, dry, stiff, low plasticity, poorly-graded with ~15 sand, N/O, N/S									
4-8	(4-8') sandy CLAY - brown, moist, stiff, low plasticity, poorly-graded with ~20% sand, N/O, N/S									
8	BoB @ 8'									
10										
15										
20										
25										
30										

HA - Hand Auger
 DP - Direct Push
 HC - Hydrocarbon
 BoB - Bottom of Boring
 N/O - no odor
 N/S - no staining
 TOC - top of casing
 bgs - below ground surface

START/COMPLETION DATE: 11/26/24	SAND PACK INTERVAL (FEET): NA
PROJECT: WPF III #A18-13A	BENTONITE/GROUT INTERVAL (FEET): NA
LOGGED BY: S. LEIVO	WELL SCREEN INTERVAL (FEET): NA
DRILLING COMPANY/EQUIPMENT: EAGLE/HAND AUGER - GAS AUGER	WELL DIAMETER (INCHES): NA
BORING DEPTH (FEET): 8	WELL DEPTH (FEET): NA
PID INSTRUMENT: MiniRAE 3000 - PID #15	 <p>EAGLE ENVIRONMENTAL CONSULTING, LLC</p> <p>8000 W 44th Ave., Wheat Ridge, CO 80033 Ph: 303-433-0479 • F: 303-325-5449</p>
TIME STARTED/COMPLETED: 0940/1015	
SAMPLE COLLECTION DEPTH (FT.)/TIME: 6-7/1000 & 7-8/1010	

DEPTH (FT)	LITHOLOGY	SAMPLE				OVM/OVA (PPM)	BLOW COUNT (per 0.5 FT)	DEPTH (FT)	WELL CONSTRUCTION DETAIL	COMMENTS
	DESCRIPTION	GRAPHIC LOG	TYPE	NUMBER	RECOVERY %					
0	(0-1') clayey SAND, light brown, dry, very loose, fine grained, poorly-graded with ~10% clay, N/O, N/S	SC	HA	1	100	N/A	N/A			
1-4	(1-4') sandy CLAY - brown, dry, stiff, low plasticity, poorly-graded with ~15 sand, N/O, N/S									
4-8	(4-8') sandy CLAY - brown, moist, stiff, low plasticity, poorly-graded with ~20% sand, N/O, N/S									
8	BoB @ 8'	CL				1.0				
						1.0				

HA - Hand Auger
 DP - Direct Push
 HC - Hydrocarbon
 BoB - Bottom of Boring
 N/O - no odor
 N/S - no staining
 TOC - top of casing
 bgs - below ground surface

START/COMPLETION DATE: 11/26/24

SAND PACK INTERVAL (FEET): NA

PROJECT: WPF III #A18-13A

BENTONITE/GROUT INTERVAL (FEET): NA

LOGGED BY: S. LEIVO

WELL SCREEN INTERVAL (FEET): NA

DRILLING COMPANY/EQUIPMENT: EAGLE/HAND AUGER - GAS AUGER

WELL DIAMETER (INCHES): NA

BORING DEPTH (FEET): 8

WELL DEPTH (FEET): NA

PID INSTRUMENT: MiniRAE 3000 - PID #15

TIME STARTED/COMPLETED: 1015/1135

SAMPLE COLLECTION DEPTH (FT.)/TIME: 6-7/1125 & 7-8/1130




EAGLE
 ENVIRONMENTAL
 CONSULTING, LLC

8000 W 44th Ave., Wheat Ridge, CO 80033
 Ph: 303-433-0479 • F: 303-325-5449


DEPTH (FT)	LITHOLOGY	SAMPLE				OVM/OVA (PPM)	BLOW COUNT (per 0.5 FT)	DEPTH (FT)	WELL CONSTRUCTION DETAIL	COMMENTS
	DESCRIPTION	GRAPHIC LOG	TYPE	NUMBER	RECOVERY %					
0	(0-1') clayey SAND, light brown, dry, very loose, fine grained, poorly-graded with ~10% clay, N/O, N/S	SC	HA	1	100	N/A	N/A			
1-4	(1-4') sandy CLAY - brown, dry, stiff, low plasticity, poorly-graded with ~15 sand, N/O, N/S									
4-8	(4-8') sandy CLAY - brown, moist, stiff, low plasticity, poorly-graded with ~20% sand, N/O, N/S									
8	BoB @ 8'	CL				1.4				
						1.8				

HA - Hand Auger
 DP - Direct Push
 HC - Hydrocarbon
 BoB - Bottom of Boring
 N/O - no odor
 N/S - no staining
 TOC - top of casing
 bgs - below ground surface

START/COMPLETION DATE: 11/26/24	SAND PACK INTERVAL (FEET): NA
PROJECT: WPF III #A18-13A	BENTONITE/GROUT INTERVAL (FEET): NA
LOGGED BY: S. LEIVO	WELL SCREEN INTERVAL (FEET): NA
DRILLING COMPANY/EQUIPMENT: EAGLE/HAND AUGER - GAS AUGER	WELL DIAMETER (INCHES): NA
BORING DEPTH (FEET): 8	WELL DEPTH (FEET): NA
PID INSTRUMENT: MiniRAE 3000 - PID #15	 <p>EAGLE ENVIRONMENTAL CONSULTING, LLC</p> <p>8000 W 44th Ave., Wheat Ridge, CO 80033 Ph: 303-433-0479 • F: 303-325-5449</p>
TIME STARTED/COMPLETED: 0945/1020	
SAMPLE COLLECTION DEPTH (FT.)/TIME: 6-7/1005 & 7-8/1015	


DEPTH (FT)	LITHOLOGY	SAMPLE				OVM/OVA (PPM)	BLOW COUNT (per 0.5 FT)	DEPTH (FT)	WELL CONSTRUCTION DETAIL	COMMENTS
	DESCRIPTION	GRAPHIC LOG	TYPE	NUMBER	RECOVERY %					
0	(0-1') clayey SAND, light brown, dry, very loose, fine grained, poorly-graded with ~10% clay, N/O, N/S									
1-4'	sandy CLAY - brown, dry, stiff, low plasticity, poorly-graded with ~15 sand, N/O, N/S	SC								
4-8'	sandy CLAY - brown, moist, stiff, low plasticity, poorly-graded with ~20% sand, N/O, N/S	HA	1	100			N/A			
		CL				1.4				
						1.6				
8'	BoB @ 8'									

HA - Hand Auger
 DP - Direct Push
 HC - Hydrocarbon
 BoB - Bottom of Boring
 N/O - no odor
 N/S - no staining
 TOC - top of casing
 bgs - below ground surface

START/COMPLETION DATE: 11/26/24	SAND PACK INTERVAL (FEET): NA
PROJECT: WPF III #A18-13A	BENTONITE/GROUT INTERVAL (FEET): NA
LOGGED BY: S. LEIVO	WELL SCREEN INTERVAL (FEET): NA
DRILLING COMPANY/EQUIPMENT: EAGLE/HAND AUGER - GAS AUGER	WELL DIAMETER (INCHES): NA
BORING DEPTH (FEET): 8	WELL DEPTH (FEET): NA
PID INSTRUMENT: MiniRAE 3000 - PID #15	 <p>EAGLE ENVIRONMENTAL CONSULTING, LLC</p> <p>8000 W 44th Ave., Wheat Ridge, CO 80033 Ph: 303-433-0479 • F: 303-325-5449</p>
TIME STARTED/COMPLETED: 1020/1140	
SAMPLE COLLECTION DEPTH (FT.)/TIME: 6-7/1125 & 7-8/1135	

DEPTH (FT)	LITHOLOGY	SAMPLE				OVM/OVA (PPM)	BLOW COUNT (per 0.5 FT)	DEPTH (FT)	WELL CONSTRUCTION DETAIL	COMMENTS
	DESCRIPTION	GRAPHIC LOG TYPE	NUMBER	RECOVERY %						
0	(0-1') clayey SAND, light brown, dry, very loose, fine grained, poorly-graded with ~10% clay, N/O, N/S	SC								
1-4	(1-4') sandy CLAY - brown, dry, stiff, low plasticity, poorly-graded with ~15 sand, N/O, N/S	HA	1	100		N/A				
4-8	(4-8') sandy CLAY - brown, moist, stiff, low plasticity, poorly-graded with ~20% sand, N/O, N/S	CL								
					2.2					
					1.7					
8	BoB @ 8'									
10										
15										
20										
25										
30										

HA - Hand Auger
 DP - Direct Push
 HC - Hydrocarbon
 BoB - Bottom of Boring
 N/O - no odor
 N/S - no staining
 TOC - top of casing
 bgs - below ground surface

START/COMPLETION DATE: 11/26/24		SAND PACK INTERVAL (FEET): NA	
PROJECT: WPF III #A18-13A		BENTONITE/GROUT INTERVAL (FEET): NA	
LOGGED BY: S. LEIVO		WELL SCREEN INTERVAL (FEET): NA	
DRILLING COMPANY/EQUIPMENT: EAGLE/HAND AUGER - GAS AUGER		WELL DIAMETER (INCHES): NA	
BORING DEPTH (FEET): 8	WELL DEPTH (FEET): NA	 <p>EAGLE ENVIRONMENTAL CONSULTING, LLC</p> <p>8000 W 44th Ave., Wheat Ridge, CO 80033 Ph: 303-433-0479 • F: 303-325-5449</p>	
PID INSTRUMENT: MiniRAE 3000 - PID #15			
TIME STARTED/COMPLETED: 1135/1210			
SAMPLE COLLECTION DEPTH (FT.)/TIME: 6-7/1155 & 7-8/1205			

DEPTH (FT)	LITHOLOGY	SAMPLE				OVM/OVA (PPM)	BLOW COUNT (per 0.5 FT)	DEPTH (FT)	WELL CONSTRUCTION DETAIL	COMMENTS
	DESCRIPTION	GRAPHIC LOG	TYPE	NUMBER	RECOVERY %					
0	(0-1') clayey SAND, brown, dry, loose, fine grained, poorly-graded with ~20% clay, N/O, N/S									
1-5	(1-5') sandy CLAY - brown, moist, stiff, low plasticity, poorly-graded with ~15 sand, N/O, N/S	SC								
5	(5-8') clayey SAND - brown, moist, dense, fine grained, poorly-graded with 25% sand, N/O, N/S	HA	1	100		N/A				
		CL				1.6				
						1.5				
10	BoB @ 8'									
15										
20										
25										
30										

HA - Hand Auger
 DP - Direct Push
 HC - Hydrocarbon
 BoB - Bottom of Boring
 N/O - no odor
 N/S - no staining
 TOC - top of casing
 bgs - below ground surface


START/COMPLETION DATE: 11/26/24	SAND PACK INTERVAL (FEET): NA
PROJECT: WPF III #A18-13A	BENTONITE/GROUT INTERVAL (FEET): NA
LOGGED BY: S. LEIVO	WELL SCREEN INTERVAL (FEET): NA
DRILLING COMPANY/EQUIPMENT: EAGLE/HAND AUGER - GAS AUGER	WELL DIAMETER (INCHES): NA
BORING DEPTH (FEET): 8	WELL DEPTH (FEET): NA
PID INSTRUMENT: MiniRAE 3000 - PID #15	
TIME STARTED/COMPLETED: 1220/1335	
SAMPLE COLLECTION DEPTH (FT.)/TIME: 6-7/1320 & 7-8/1330	



EAGLE
 ENVIRONMENTAL
 CONSULTING, LLC
 8000 W 44th Ave., Wheat Ridge, CO 80033
 Ph: 303-433-0479 • F: 303-325-5449


DEPTH (FT)	LITHOLOGY	SAMPLE				OVM/OVA (PPM)	BLOW COUNT (per 0.5 FT)	DEPTH (FT)	WELL CONSTRUCTION DETAIL	COMMENTS
	DESCRIPTION	GRAPHIC LOG	TYPE	NUMBER	RECOVERY %					
0	(0-1') clayey SAND, brown, dry, loose, fine grained, poorly-graded with ~20% clay, N/O, N/S									
1-5	(1-5') sandy CLAY - brown, moist, stiff, low plasticity, poorly-graded with ~15 sand, N/O, N/S	SC								
5	(5-8') clayey SAND - brown, moist, dense, fine grained, poorly-graded with 25% sand, N/O, N/S	HA	1	100		N/A				
		CL				1.2				
						1.4				
8	BoB @ 8'									
10										
15										
20										
25										
30										

HA - Hand Auger
 DP - Direct Push
 HC - Hydrocarbon
 BoB - Bottom of Boring
 N/O - no odor
 N/S - no staining
 TOC - top of casing
 bgs - below ground surface

START/COMPLETION DATE: 11/26/24		SAND PACK INTERVAL (FEET): NA	
PROJECT: WPF III #A18-13A		BENTONITE/GROUT INTERVAL (FEET): NA	
LOGGED BY: S. LEIVO		WELL SCREEN INTERVAL (FEET): NA	
DRILLING COMPANY/EQUIPMENT: EAGLE/HAND AUGER - GAS AUGER		WELL DIAMETER (INCHES): NA	
BORING DEPTH (FEET): 8	WELL DEPTH (FEET): NA	 <p>EAGLE ENVIRONMENTAL CONSULTING, LLC 8000 W 44th Ave., Wheat Ridge, CO 80033 Ph: 303-433-0479 • F: 303-325-5449</p>	
PID INSTRUMENT: MiniRAE 3000 - PID #15			
TIME STARTED/COMPLETED: 1225/1340			
SAMPLE COLLECTION DEPTH (FT.)/TIME: 6-7/1320 & 7-8/1330			

DEPTH (FT)	LITHOLOGY	SAMPLE				OVM/OVA (PPM)	BLOW COUNT (per 0.5 FT)	DEPTH (FT)	WELL CONSTRUCTION DETAIL	COMMENTS
	DESCRIPTION	GRAPHIC LOG	TYPE	NUMBER	RECOVERY %					
0	(0-1') clayey SAND, brown, dry, loose, fine grained, poorly-graded with ~20% clay, N/O, N/S									
1-5	(1-5') sandy CLAY - brown, moist, stiff, low plasticity, poorly-graded with ~15 sand, N/O, N/S	SC								
5	(5-8') clayey SAND - brown, moist, dense, fine grained, poorly-graded with 25% sand, N/O, N/S	HA	1	100		N/A				
		CL				1.5				
						1.1				
8	BoB @ 8'									
10										
15										
20										
25										
30										

HA - Hand Auger
 DP - Direct Push
 HC - Hydrocarbon
 BoB - Bottom of Boring
 N/O - no odor
 N/S - no staining
 TOC - top of casing
 bgs - below ground surface

START/COMPLETION DATE: 11/26/24	SAND PACK INTERVAL (FEET): NA
PROJECT: WPF III #A18-13A	BENTONITE/GROUT INTERVAL (FEET): NA
LOGGED BY: S. LEIVO	WELL SCREEN INTERVAL (FEET): NA
DRILLING COMPANY/EQUIPMENT: EAGLE/HAND AUGER - GAS AUGER	WELL DIAMETER (INCHES): NA
BORING DEPTH (FEET): 8	WELL DEPTH (FEET): NA
PID INSTRUMENT: MiniRAE 3000 - PID #15	 <p>EAGLE ENVIRONMENTAL CONSULTING, LLC 8000 W 44th Ave., Wheat Ridge, CO 80033 Ph: 303-433-0479 • F: 303-325-5449</p>
TIME STARTED/COMPLETED: 1335/1415	
SAMPLE COLLECTION DEPTH (FT.)/TIME: 6-7/1400 & 7-8/1410	