



PA Wellbore For State - Vertical

Well Name: WELD COUNTY USX AB19-08P

Original Hole [Land]		Well Header			
MD (ftK B)	Vertical schematic (actual)	Surface UWI	Business Unit	Gov Auth Dist	Prod Tree Loc
		0512330107	Rockies		Land
		Orig. KB to Gnd (ft)	Original Spud Date	Abandon Date	Well Sub-Status
		16.00	11/5/2009		TA (AT SURFACE)
		Comment FRAC'D INTO MAGNUSON 19-23.			
		Geologic Horizons			
		Formation Name	Final Top MD (ftKB)		
		FOXHILLS-BASE PROD	603.2		
		Formation Name	Final Top MD (ftKB)		
		UPPER PIERRE AQUIFER-TOP PROD	739.5		
		Formation Name	Final Top MD (ftKB)		
		UPPER PIERRE AQUIFER-BASE PROD	1,724.2		
		Formation Name	Final Top MD (ftKB)		
		A SAND-TOP PROD	2,687.6		
		Formation Name	Final Top MD (ftKB)		
		A SAND-BASE PROD	3,177.3		
		Formation Name	Final Top MD (ftKB)		
		PARKMAN-TOP PROD	3,801.3		
		Formation Name	Final Top MD (ftKB)		
		PARKMAN-BASE PROD	4,253.1		
		Formation Name	Final Top MD (ftKB)		
		SUSSEX-TOP PROD	4,374.0		
		Formation Name	Final Top MD (ftKB)		
		SUSSEX-BASE PROD	4,729.0		
		Formation Name	Final Top MD (ftKB)		
		SHANNON-TOP PROD	5,150.4		
		Formation Name	Final Top MD (ftKB)		
		SHANNON-BASE PROD	5,232.2		
		Formation Name	Final Top MD (ftKB)		
		NIORARA-TOP PROD	6,839.5		
		Formation Name	Final Top MD (ftKB)		
		INTRA SHARON SPGS MK	6,879.8		
		Formation Name	Final Top MD (ftKB)		
		NIO A CHALK	6,906.1		
		Formation Name	Final Top MD (ftKB)		
		NIO A MARL	6,924.3		
		Formation Name	Final Top MD (ftKB)		
		NIO B CHALK	7,017.7		
		Formation Name	Final Top MD (ftKB)		
		NIO C MARL	7,050.0		
		Formation Name	Final Top MD (ftKB)		
		NIO D CHALK	7,079.3		
		Formation Name	Final Top MD (ftKB)		
		NIO FT HAYS	7,103.5		
		Formation Name	Final Top MD (ftKB)		
		CODELL	7,127.3		
		Formation Name	Final Top MD (ftKB)		
		CARLILE	7,143.9		
		Formation Name	Final Top MD (ftKB)		
		GREENHORN	7,209.0		
		Surface Location (Congressional)			
		Qtr 3	Qtr 4	Section	Twncshp
		SE	NE	19	7
		Twncshp...	Range	Rng E/...	Latitude (°)
		N	64	W	40.56018303
					Longitude (°)
					-104.58557632
					5
		Wellbore Sections			
		Section Des	Hole Size (in)	Top Depth (ftKB)	Btm Depth (ftKB)
		SURFACE	12 1/4	16.0	810.0
		PRODUCTION	7 7/8	810.0	7,294.0
		Casing Strings			
		Csg Des	Run Date	OD (in)	Wt/Len (lb/ft)
		Surface	11/6/2009	8 5/8	32.00
		Production Casing	11/9/2009	4 1/2	11.60
		Grade	Top Depth (MD) (ftKB)	Set Depth (MD) (ftKB)	
		J-55	16	802.3	
		PS-80	16	7284.5	
		Cement			
		Des	Start Date	Top (ftKB)	Btm (ftKB)
		Surface Casing Cement	11/6/2009	16.0	802.3
		Production Casing Cement	11/9/2009	1,383.0	7,284.5
		Stim/Frac Summary			
		Min Top Depth (ftKB)	Max Btm Depth (ftKB)		
		6,912.0	7,143.0		
		Perforations			
		Linked Zone	Date	Top Depth (ftKB)	Bottom Depth (ftKB)
		NIOBRARA, Original Hole	12/8/2009 18:00	6,912.0	6,924.0

Surface Casing Cement, Casing, 11/6/2009 08:00; 16-802.3; 2009-11-06 08:00

Production Casing Cement, Casing, 11/9/2009 16:30; 1383-7284.5; 2009-11-09 16:30

6,912.0-6,924.0ftKB on 12/8/2009 18:00 (Perforated); 6912-6924; 2009-12-08 18:00
7,025.0-7,037.0ftKB on 12/8/2009 13:50 (Perforated); 7025-7037; 2009-12-08 13:50

7,128.0-7,143.0ftKB on 11/19/2009 11:00 (Perforated); 7128-7143; 2009-11-19 11:00

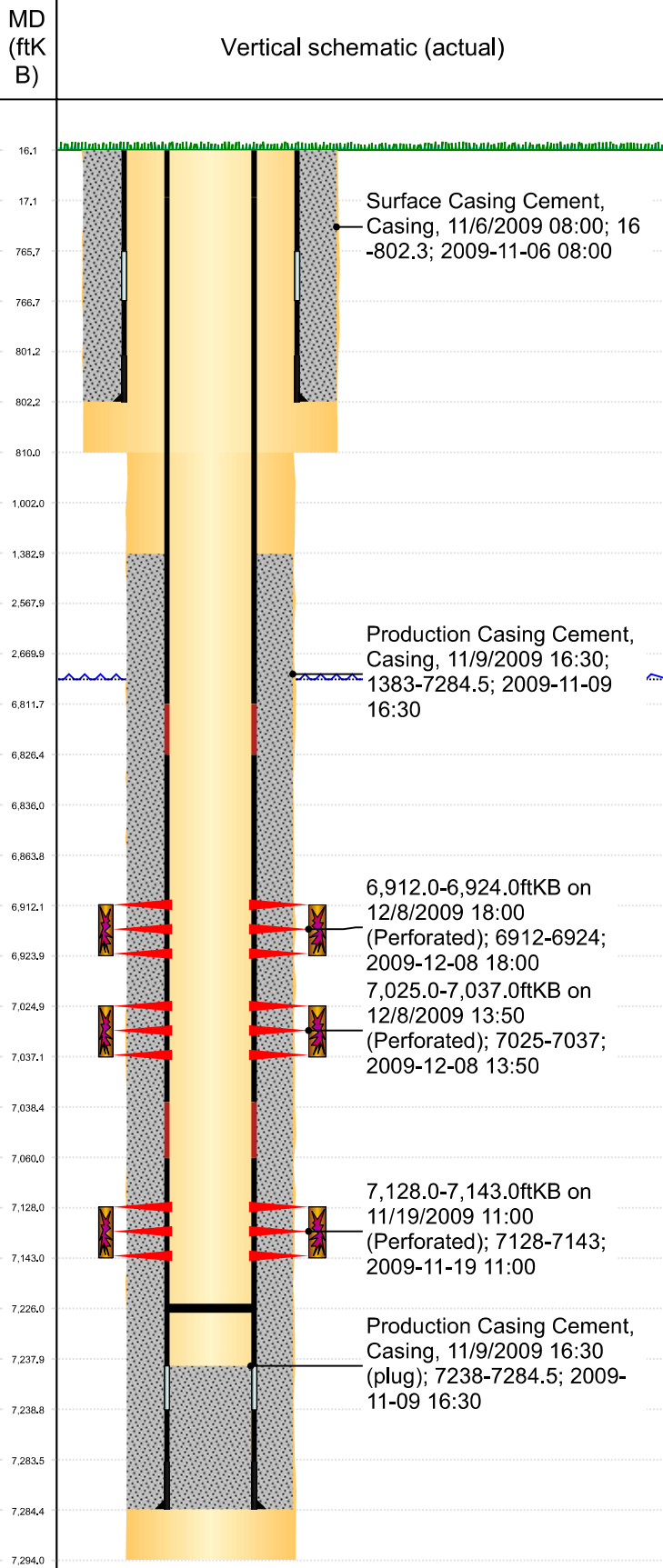
Production Casing Cement, Casing, 11/9/2009 16:30 (plug); 7238-7284.5; 2009-11-09 16:30



PA Wellbore For State - Vertical

Well Name: WELD COUNTY USX AB19-08P

Original Hole [Land]



Perforations			
Linked Zone NIOBRARA, Original Hole	Date 12/8/2009 13:50	Top Depth (ftKB) 7,025.0	Bottom Depth (ftKB) 7,037.0
Linked Zone CODELL, Original Hole	Date 11/19/2009 11:00	Top Depth (ftKB) 7,128.0	Bottom Depth (ftKB) 7,143.0

Other In Hole					
Run Date	Des	Make	OD (in)	Top (ftKB)	Btm (ftKB)

Logs			
Date	Type	Depth Top (MD) (ftKB)	Btm (ftKB)
10/9/2009	Caliper/Comp. Density/Neutron/GR/SP/ML	2,950	7,297.0
10/9/2009	DIL/GR/SP/Caliper	802	7,297.0
11/16/2009	CBL/CCL/GR	0	7,212.0

Wellbore Plug Back Total Depths			
Date	Type	Com	PBTD (ftKB)
11/30/2009	PLUG	TBG TALLY MEASUREMENT.	7,234
1/18/2010	PLUG REMNANTS	DRILL 2 COMPOSITE PLUGS AND CHASE DOWN W/ 232 JTS	7,226