

Reclamation Plan – 304.c.(16)

TR 32-28-597 Oil and Gas Location

Loc ID #324040

October 2023



INTRODUCTION

TEP Rocky Mountain LLC (“TEP”) has prepared the following Reclamation Plan as required by the Colorado Oil and Gas Conservation Commission (“COGCC”) Rule 304.c.(16). This reclamation plan describes the methods TEP will use during interim reclamation and final reclamation of the TR 32-28-597 pad in compliance with State and Local reclamation standards. TEP also operates under a field wide Surface Reclamation Plan for Oil and Gas Operations which provides additional guidance on surface reclamation methods and best management practices that are applicable for the majority of sites operated by TEP.

This reclamation plan addresses two phases of site reclamation – interim reclamation, and final reclamation. Interim reclamation occurs once well construction and/or facility construction is complete. The area surrounding the wellhead and production facilities not required for long-term production operations is recontoured and stabilized to prevent soil erosion and to promote growth of desirable vegetation. The primary objective of interim reclamation is to establish a self-sustaining, vigorous, diverse, native (or otherwise approved) plant community sufficient to minimize visual impacts, provide forage for wildlife, stabilize soils, and impede growth of noxious weeds.

Final reclamation occurs once all existing wells on an Oil and Gas Location have been plugged and abandoned and the location is no longer needed for ongoing production operations. The primary objectives of final reclamation are to return the land to pre-disturbance condition by recontouring the site where necessary, re-establishing hydrologic systems, and establishing self-sustaining native (or otherwise approved) plant communities.

SITE DESCRIPTION

The TR 32-28-597 Oil and Gas Development Plan (“TR 32-28-597 OGD”) is a 360-acre OGD consisting of 5.778-acres of Surface Lands and 360-acres of Mineral Lands located within W $\frac{1}{2}$ NW $\frac{1}{4}$, NW $\frac{1}{4}$ SW $\frac{1}{4}$, NE $\frac{1}{4}$, N $\frac{1}{2}$ SE $\frac{1}{4}$ of Section 28, Township 5 South, Range 97, 6th P.M., Garfield County, Colorado. The TR 32-28-597 OGD includes the re-construction of the existing TR 32-28-597 pad to support drilling, completion, and production operations for seventeen (17) proposed directionally drilled natural gas wells, upgrading small sections of the existing access entrances (north & south), and installation of associated pipeline infrastructure.

The TR 32-28-597 pad (COGCC Loc ID# 324040) is an existing Oil and Gas Location, with one (1) existing natural gas well, located within SW $\frac{1}{4}$ NE $\frac{1}{4}$ of Section 28, Township 5 South, Range 97 West, 6th P.M., within Garfield County, Colorado, on private land owned by Chevron USA Inc., which overlies private minerals. The Oil and Gas Location is located approximately 15.24 miles northwest of the Town of Parachute, Colorado. The land on which the pad is located is classified as non-crop land and rangeland. The seventeen (17) proposed wells planned for development on this location will be directionally drilled into the underlying Fee lease.

The existing 4.525-acres TR 32-28-597 pad will be reconstructed and expanded to a 5.778-acres footprint to support drilling and completion operations of the proposed directional wells. The long-term disturbance, or the disturbance required for long-term production operations, attributed to the TR 32-28-597 pad will be approximately 1.192-acres. All proposed disturbance will be located on private property.

A small portion of the existing TR 32-28-597 access road will be upgraded at both entrances to the pad (north and south side). The proposed access road upgrades associated with development of the proposed wells on the TR 32-28-597 pad will occur within the existing road disturbance area and will not create any new surface disturbance.

The existing 7.757-acres TR 34-16-597 pad will be utilized to support remote well completion operations associated with the seventeen (17) proposed wells on the TR 32-28-597 pad. The TR 34-16-597 pad will be reconstructed within the original footprint of the Oil and Gas Location. The TR 34-16-597 pad will be reclaimed back to the current production pad footprint (1.779-acres) after well completion operations associated with the proposed wells on the TR 32-28-597 pad have finished.

The proposed pipeline corridors associated with development of the proposed wells on the TR 32-28-597 pad will create approximately 0.134-acres of surface disturbance. Of the 0.134-acres of surface disturbance, approximately 0.025-acres would be considered existing surface disturbance (i.e. existing roads) and approximately 0.109-acres would be considered re-disturbance (i.e. reclaimed rights-of-way). The long-term disturbance attributed to the proposed pipeline following reclamation of the pipeline Right-of-Way will be approximately 0.025-acres (i.e. existing access road). All proposed surface disturbance associated with permanent pipeline installation would be located on private surface.

TEP would also need to install temporary surface pipelines between TR 32-28-597 pad and the TR 34-16-597 pad to support remote well completion operations. No ground disturbance activities are planned during installation or removal of the proposed temporary surface pipelines.

The total surface disturbance associated with the TR 32-28-597 OGD and the associated support facilities is approximately 13.668-acres, all of which would be located on private surface and includes reconstruction and expansion of the TR 32-28-597 pad, installation of the proposed gas and water pipelines, and reconstruction of the TR 34-16-597 pad to support remote well completion operations. Of the 13.668-acres of disturbance, 12.416-acres will be within areas of existing disturbance or areas previously disturbed by development activities. Approximately ninety one percent (91%) of the total disturbance acreage will be on lands previously disturbed. The long-term disturbance, or disturbance remaining after interim reclamation, including support locations, will be approximately 2.996-acres.

Please see the Plan of Development attached to the Form 2A for a detailed breakdown of disturbance acreage for all project components associated with the TR 32-28-597 OGD.

SOILS DESCRIPTION

The National Resource Conservation Service (“NRCS”) identifies the dominate soil types within the boundary of the TR 32-28-597 pad as the Parachute-Irigul complex and the Parachute-Irigul-Rhine association. The Parachute soil type is associated with colluvium over residuum weathered from sandstone and shale. The typical profile to a depth of 10 inches is defined as loam, 10-25 inches defined as very channery loam, and 20-59 inches defined as bedrock. The Irigul soil type is associated with colluvium over residuum weathered from sandstone and shale. The typical profile to a depth of 6 inches is defined as channery loam, 6-13 inches is defined as vary channery loam, and 13-59 inches is defined as bedrock. The Rhine soil type is associated with colluvium over residuum weathered from sandstone and shale. The typical profile to a depth of 10 inches is defined as loam, 10-39 inches is defined as channery loam, 39-55 inches is defined as very channery loam, and 55-60 inches is defined as bedrock.

The NRCS reports that these soils are classified, under the Uniform Soils Classification System, as inorganic silts (ML). These soils have a reported hydrologic group rating of C, having a slow infiltration rate when thoroughly wet, or D, having a very slow infiltration rate when thoroughly wet. The infiltration rate is listed as low to moderately high ranging from 0.00 to 0.57 inches per hour. The NRCS lists the Flood Frequency Class for the facility location as “None”. “None” means that flooding is not probable, and the chance of flooding is nearly zero percent in any year.

NRCS reports that the Erosion factor K (whole soil) of 0.20 for the site, or low to moderately susceptible to erosion by water. Erosion factor K indicates the susceptibility of a soil to sheet and rill erosion by water.

Factor K is one of six factors used in the Universal Soil Loss Equation (USLE) and the Revised Universal Soil Loss Equation (RUSLE) to predict the average annual rate of soil loss by sheet and rill erosion in tons per acre per year. The estimates are based primarily on percentage of silt, sand, and organic matter and on soil structure and saturated hydraulic conductivity (Ksat). Values of K range from 0.02 to 0.69. Other factors being equal, the higher the value, the more susceptible the soil is to sheet and rill erosion by water. Stormwater BMPs will be implemented to control soil erosion.

PRE-DISTURBANCE VEGETATION COMPOSITION

WestWater Engineering, Inc (“WestWater”) prepared a Biological Resources Report in March 2023 potential impacts to environmental resources within the project area. A desktop analysis of the project site was completed to determine the potential occurrence of biological resources. Information reviewed as part of the desktop analysis included literature reviews, information and mapping provided by U.S. Fish and Wildlife Service (USFWS), Colorado Parks and Wildlife (CPW) online mapping information, and WestWater’s knowledge of the general area based on previous nearby surveys. The report also includes a list of common plant species within the project area. The primary vegetation communities within the project area include mountain shrublands, sagebrush shrublands, and aspen woodlands. A comprehensive list of common plant species within the project area can be found in the Biological Resources Report attached to the Form 2A.

A vegetation assessment was completed for the TR 32-28-597 pad by WestWater in July 2023. This assessment provides additional details regarding vegetation communities located within the project area. The vegetation assessment was completed for the reference area and determined that the present cover for pre-disturbance conditions is approximately 98%. Please see the Vegetation Assessment attached to the Form 2A for additional information.

IDENTIFICATION OF REFERENCE AREA AND VEGETATION COMPOSITION

Reference area locations correspond to the pre-disturbance vegetation communities found on the pad site are chosen in areas that experience the same environmental conditions and are not expected to be disturbed. The reference area is used to set goals for reclamation success. The proposed TR 32-28-597 pad reference site is located at Lat.: 39.586748/ Long.: -108.283535 west of the working pad surface with the same soil type, Parachute-Irigul complex. WestWater prepared a Biological Resources Report in March 2023 assessing potential impacts to environmental resources within the project area. A comprehensive list of common plant species within the project area can be found in the Biological Resources Report attached to the Form 2A. WestWater completed a follow-up vegetation assessment in the July 2023, which includes a list of plant species found along the reference transect within the reference area. The Reference Area Map and Pictures have been attached to the Form 2A. Please see the Biological Resources Report and Vegetation Assessment attached to the Form 2A for additional details.

KNOWN WEED INFESTATIONS

WestWater conducted a vegetation assessment at the TR 32-28-597 pad in July 2023. The vegetation assessment did not identify any existing weed infestations. TEP will continue to implement a Noxious Weed Management Program as described in the Topsoil Protection Plan attached to the Form 2A.

GATHERING LINES

Development of the TR 32-28-597 pad involves the installation and operation of new natural gas and produced water gathering pipelines. Installation of the proposed off-location pipelines include one (1) eight-inch (8”) coated steel natural gas gathering pipeline and two (2) four-inch (4”) FlexPipe produced water pipeline. Installation of the proposed pipelines will create approximately 0.134-acres of surface disturbance. Of the 0.134-acres of surface disturbance, approximately 0.025-acres would be considered existing surface

disturbance (i.e. existing roads) and approximately 0.109-acres would be considered re-disturbance (i.e. reclaimed rights-of-way). No new disturbance will occur from installation of the proposed pipeline. The long-term disturbance attributed is approximately 0.025-acres (i.e. existing road).

Cleanup and reclamation of the pipeline corridor(s) will occur immediately following completion of the pipeline installations. Cleanup of the construction workspace and any temporary use areas would be performed by removing any construction debris and by performing final grading to the original / pre-disturbance contour. Erosion control measures would be installed, and seeding would be performed in accordance with COGCC requirements.

TEP will employ drill, broadcast, or hydroseed methods to ensure proper seed placement. Drill seeding is preferred and will be used wherever soil characteristics and slope allows for effective operation of a rangeland seed drill. Drill seeding will be performed perpendicular to contour. Seed will be placed in direct contact with the soil at an average depth of 0.5 inches, covered with soil, and firmed to eliminate air pockets around the seeds. Broadcast seeding will be employed only in areas where drill seeding is unsafe or physically impossible. Seed will be applied uniformly over disturbed areas with manually operated cyclone-bucket spreaders, mechanical spreaders, or blowers. Broadcast application rates will be twice that of drill rates. The seed will be uniformly raked or dragged to incorporate seed to a sufficient seeding depth. TEP will incorporate the gathering line ROW into its existing weed management plan.

ACCESS ROAD

A small portion of the existing TR 32-28-597 access road will be upgraded at both entrances to the pad (north and south side). The proposed access road upgrades associated with development of the proposed wells on the TR 32-28-597 pad will occur within the existing road disturbance area and will not create any new surface disturbance. In addition, minor road maintenance will be performed (if needed) along the existing lease roads prior to construction. Stormwater controls along the existing access roads and the TR 32-28-597 road will be evaluated during construction to ensure they are functioning properly. Additional controls may be evaluated with the surface owners during construction and implemented, as necessary.

Interim reclamation of the reconstructed access road, if any, will begin following completion of construction of the proposed driving surface of the access road. Preserved topsoil windrowed along the uphill side of the access road corridor will be placed back over the cut and fill slope of the access road. Any boulders larger than twenty-four inches in diameter exposed on the cut and fill slope will be removed prior to reseeding. Once placement of topsoil is complete, hydro-mulch / seed will be applied to the cut and fill slopes of the access road to stabilize topsoil and promote establishment of desirable vegetation.

REMOVAL OF DRILLING, COMPLETION EQUIPMENT, AND ALL ASSOCIATED DEBRIS AND WASTE MATERIALS

All drilling, flowback, and well completion equipment will be removed from the Oil and Gas Location upon completion of the proposed operations. Any materials, debris, and non-exploration and production waste materials will be removed from the Oil and Gas Location and recycled or disposed of in accordance with applicable regulations. All guy line anchors left buried for future use will be identified by a marker no less than four feet (4') in height and not greater than one foot (1') east of the guy line anchor, as required by COGCC rule.

MANAGEMENT OF WASTE MATERIALS

Construction, drilling, and completion operations generate waste streams that will be managed, recycled, and/or disposed in accordance with applicable Federal and State regulations. All potential waste streams are described in detail in the Waste Management Plan attached to the Form 2A, which includes a detailed

description the process and procedures for drill cuttings sampling and onsite disposal. Drill cuttings that meet Table 915-1 standards or are within background limits in the footnotes listed in Table 915-1, will be disposed of within the onsite cuttings trench. Any excess drill cuttings that exceed the capacity of the cuttings trench will either be hauled to an approved third-party disposal facility or utilized for beneficial reuse in recontouring during reclamation. Please see the Appendix A, Interim Reclamation Layout Drawing, which depicts the final placement of mixed drill cuttings.

INTERIM RECLAMATION AREAS

Interim reclamation of the TR 32-28-597 pad will begin within six (6) months following completion of drilling and well completion operations. A working area (production pad) must be maintained around each wellhead and production equipment to ensure site accessibility and safe working conditions during long-term production operations. Of the 5.778-acres of total site disturbance, approximately 1.192-acres (production pad) will be left un-reclaimed for long-term production operations. The disturbed areas surrounding the production pad will be re-contoured to blend as nearly as possible with the natural topography. Final grading of back-fill and cut slopes is necessary to prevent erosion and encourage re-establishment of desirable vegetation. Please see Appendix A, Interim Reclamation Layout, for additional site-specific details.

COMPACTION ALLEVIATION

Compaction alleviation is a necessary component of site reclamation as soil compaction can reduce water infiltration and may hinder the ability of seed to penetrate the soil following germination. All compacted portions of the pad, roads, and pipeline route, not required for long term production operations, will be ripped to a depth of eighteen inches (18”) when subsurface conditions permit. If the seed bed has begun to crust over or seal, the seed bed will be prepared by disking or some other mechanical means sufficient to allow penetration of the seed into the soil.

RECONTOURING

The disturbed areas of the Oil and Gas Location surrounding the production pad will be re-contoured to blend as nearly as possible with the natural topography. Final grading of back-fill and cut slopes is necessary to prevent erosion and encourage re-establishment of desirable vegetation. Any existing drainages disturbed during pad construction will be re-established where appropriate. Prior to seeding, topsoil will be spread to a uniform depth to promote the establishment of desirable vegetation. Soil samples may be collected once re-contouring and topsoil redistribution has occurred to determine if any soil amendments are needed. Please see Appendix A, Interim Reclamation Layout, for additional details.

RE-ESTABLISH AND STABILIZE DRAINAGE FEATURES

Stormwater control measures will be maintained and/or re-established to ensure soil stabilization at the Oil and Gas Location. Perimeter controls such as diversion ditches, sediment traps, application of seed and mulch, as well as other BMPs, will be utilized to ensure proper management of stormwater following interim reclamation. Stormwater control features will be established at the TR 32-28-597 pad to ensure proper management and discharge of stormwater during weather events. Stormwater control measures are described in detail in the Stormwater Management Plan attached to the Form 2A.

ESTABLISH DESIRED SELF-PERPETUATING PLANT COMMUNITY

The TR 32-28-597 pad is located on private surface owned by Chevron USA Inc. The seed mix provided in Table 1 is planned for use at the TR 32-28-597 pad and will be applied to all disturbed areas outside the

proposed production pad. This seed mix will also be utilized for the proposed access road and pipeline corridor associated with the proposed Oil and Gas Location.

Generally, slopes steeper than 2:1 will be hydroseeded and slopes shallower than 2:1 will be drill seeded. Seeding will occur during an appropriate time of year to ensure the best possible results for plant growth. The rate of application of the seed mix is listed in pounds of pure live seed (PLS) per acre. The seed mix will be certified and there will be no primary or secondary noxious weeds in the seed mixture.

SEEDBED PREPARATION AND SEEDING

Prior to seeding, topsoil will be spread to a uniform depth to promote the establishment of desirable vegetation. Soil samples may be collected once re-contouring and topsoil redistribution has occurred to determine if any soil amendments are needed. Recommendations regarding seed mix and/or soil amendments will be reviewed with TEP’s reclamation consultant prior to application.

All compacted portions of the pad, roads, and pipeline corridor, not required for long term production operations, will be ripped to a depth of eighteen inches (18”) when subsurface conditions permit. If the seed bed has begun to crust over or seal, the seed bed will be prepared by disking or some other mechanical means sufficient to allow penetration of the seed into the soil. In addition, broadcast seed should be covered by using a harrow, drag bar, or chain. Generally, slopes steeper than 2:1 will be hydroseeded and slopes shallower than 2:1 will be drill seeded. Drill seeding will occur on contour with a depth no greater than one-half inch (0.5”). Seeding will occur during the appropriate time of year to ensure the best possible results for plant growth. Seeding typically occurs immediately after reclamation activities while the soil is loose; however, seeding may be delayed due to high temperatures and dry conditions. The seed mix proposed for use at the TR 32-28-597 pad is provided in Table 1, which includes the rate of application listed in pounds of pure live seed (PLS) per acre. The seed mix will be certified and there will be no primary or secondary noxious weeds in the seed mixture.

Table 1. Proposed Seed Mix

Species	PLS lbs./acre
'Bromar' Mountain brome (<i>Bromus marginatus</i>)	1.5
'Critana' Thickspike wheatgrass (<i>Elymus lanceolatus</i> ssp. <i>Lanceolatus</i>)	2.25
'Secar' Snake River wheatgrass (<i>Elymus wawawaiensis</i>)	2
'Canbar' Canby bluegrass (<i>Poa secunda</i> ssp. <i>Canbyi</i>)	0.25
'Rosana' Western wheatgrass (<i>Pascopyrum smithii</i>)	2
'San Luis' Slender wheatgrass (<i>Elymus trachycaulus</i> ssp. <i>Trachycaulus</i>)	1.9
'Lodorm' Green needlegrass (<i>Nassella viridula</i>)	1
'Nezpar' Indian ricegrass (<i>Achnatherum hymenoides</i>)	1
Prairie junegrass (<i>Koeleria macrantha</i>)	0.1
'Paiute' Orchardgrass (<i>Dactylis glomerata</i>)	1
'Paddock' Meadow brome (<i>Bromopsis biebersteinii</i>)	5
'Bozoisky II' Russian wildrye (<i>Psathyrostachys juncea</i>)	2
'Alkar' Tall wheatgrass (<i>Thinopyrum ponticum</i>)	2
Total:	22

Hydro-mulch will be applied to the reclaimed area to minimize the potential for soil erosion and to provide protection for the seed prior to germination. Proper reshaping of slopes, placement of soils and earthwork, and other site design characteristics provide for site stabilization. Re-establishment of desirable plant communities provides the best means for ensuring long-term site stability.

FENCING

TEP does not plan to fence this Oil and Gas Location. Cattle grazing does occur in the vicinity of the Oil and Gas Location, which could result in potential impacts to reclamation success. If it is determined that cattle are limiting reclamation success, TEP will evaluate installation of a perimeter fence to limit grazing access to the Oil and Gas Location. Other option that would be considered include, deferred grazing and additional application of seed. In the event a fence is installed around this oil and gas location, TEP will use a CPW approved wildlife friendly fence design to minimize the potential for wildlife entanglement.

MANAGEMENT OF INVASIVE PLANTS

TEP will implement a weed management program to ensure the Oil and Gas Location is free of undesirable plant species designated to be noxious weeds as required by COGCC Rule 1003.f. Weed control measures will be conducted in compliance with the Colorado Noxious Weed Act, C.R.S. §35-5.5-115 and the current rules pertaining to the administration and enforcement of Colorado Noxious Weed Act. Field personnel will monitor the Oil and Gas Location for noxious weeds and notify the Environmental Specialist, and a certified weed sprayer will be dispatched to inspect the site and take action to treat the noxious weeds if present.

RECLAMATION MONITORING, INSPECTION, MAINTENANCE, AND REPORTING

Permanent vegetative cover will be considered successful when the basal cover of desirable perennial species is at least 80 percent of the basal cover of the undisturbed site or, of a reference area, or, if available, of the potential basal cover as defined in the National Resource Conservation Service (NRCS) Range/Ecological Site(s), or similar, for the area. Reclamation success will be determined by the Director through a visual appraisal. Reclamation success standards are detailed in TEP's field wide Surface Reclamation Plan.

INTERIM RECLAMATION COMPLETION NOTICE

TEP will comply with the Interim Reclamation Completion Notice as required per COGCC Rule 1003.e.(3) by submitting a Sundry Notice, Form 4, describing interim reclamation procedures and any associated mitigation measures performed, any changes, if applicable in the landowner's designated final land use, and the required photos.

FINAL RECLAMATION OF OIL AND GAS LOCATION

Final Reclamation of the pad location and access roads will occur once the facility is no longer necessary for production operations and following final abandonment of all existing wells drilled from the Oil and Gas Location. Upon completion of approved plugging and abandonment of the wells, all casing will be cut-off at the base of the cellar or [a minimum of] three feet (3') below final restored ground level (whichever is deeper). The well bore will then be covered with a metal plate at least 1/4-inch-thick and welded in place, or a four-inch (4") pipe, ten feet (10') in length, four feet (4') above ground and embedded in cement. The well location and identity shall be permanently inscribed. A weep hole shall be left if a metal plate is welded in place. All plugging and abandonment operations will be completed as required by COGCC Rule 434.

Any production equipment on location will be removed and any pipelines that are associated with the plugged wells will be decommissioned/abandoned per COGCC 1100 Series rules. If pipelines are abandoned in place, pipeline risers will be cut off and capped at a minimum of three-feet (3') below final grade. The disturbed areas surrounding the well location, including the access roads, will be re-contoured

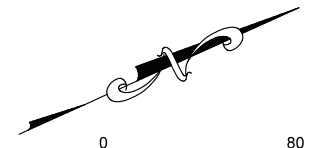
to blend as nearly as possible with the natural topography. Final grading of cut and fill slopes will be done to prevent erosion and encourage establishment of desirable vegetation. Any existing drainages disturbed and not re-established during interim reclamation will be re-established during final reclamation.

Final reclamation of the Oil and Gas Location, including recontouring, topsoil placement, compaction alleviation, seed application, weed management, and reclamation monitoring, will be generally follow the practices described above.

BEST MANAGEMENT PRACTICES

- 1) The Oil and Gas Location will be re-contoured to blend as nearly as possible with the natural topography during site reclamation. All subsoil and topsoil separated and segregated during site construction will be replaced to a uniform depth during reclamation recontouring operations.
- 2) The Oil and Gas Location will be reseeded by drill, broadcast, or hydroseed methods. Drill seeding will be utilized wherever soil characteristics and slope allow for effective operation of a rangeland seed drill.
- 3) TEP will use a seed mix approved by the surface owner.
- 4) Erosion controls will be implemented per the Stormwater Management Plan included in the Form 2A for this location and will be inspected and maintained as required by Federal, State, and Local regulations.
- 5) Noxious weeds, which may be introduced due to soil disturbance during reclamation, will be treated in accordance with applicable Federal, State, and local regulations.
- 6) Site reclamation will occur within six (6) months following well completion operations.
- 7) The areas identified to be interim reclaimed will be re-contoured to blend as nearly as possible with the natural topography during site reclamation; all topsoil will be moved from the stockpile area and placed over the facility's cut and fill slopes to a uniform depth to ensure long term topsoil health including protection from erosion, prevention of weed establishment, and maintaining soil microbial activity until final reclamation;
- 8) The seed bed will be prepared on all topsoiled areas to alleviate compaction and minimize the potential for erosion;
- 9) Topsoiled areas will be planted with desirable species or a seed mixture provided by the Surface Owner for this particular location;

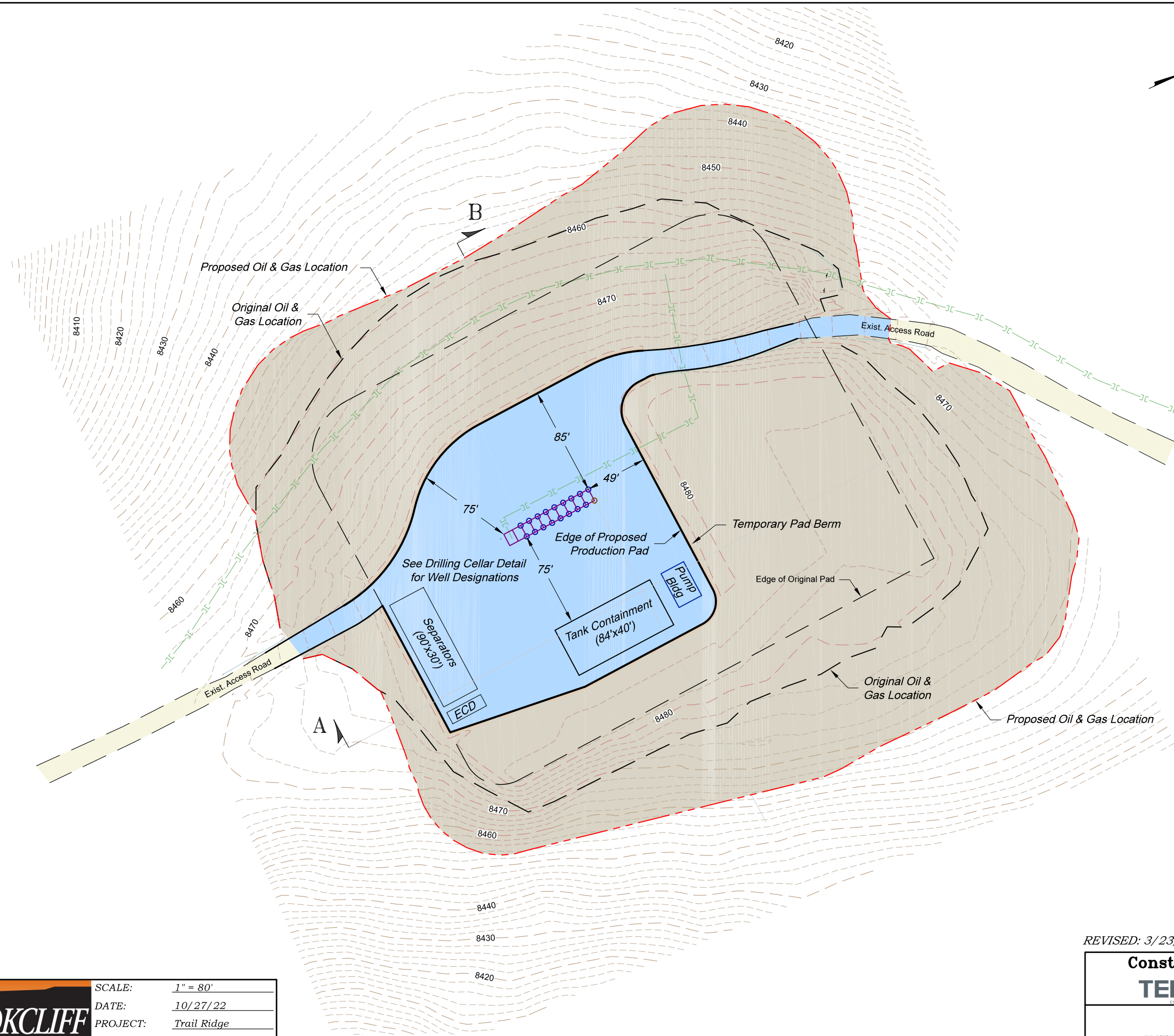
APPENDIX A
TR 32-28-597 DRILL PAD
INTERIM RECLAMATION LAYOUT DRAWING
PLAN VIEW & CROSS SECTION



0 80
GRAPHIC SCALE IN FEET
1 INCH = 80 FEET
Contour Interval: 2'

UnReclaimed Area: ±1.192 ac.
Reclaimed Area: ±4.586 ac.
Total Site Disturbance: ±5.778 ac.

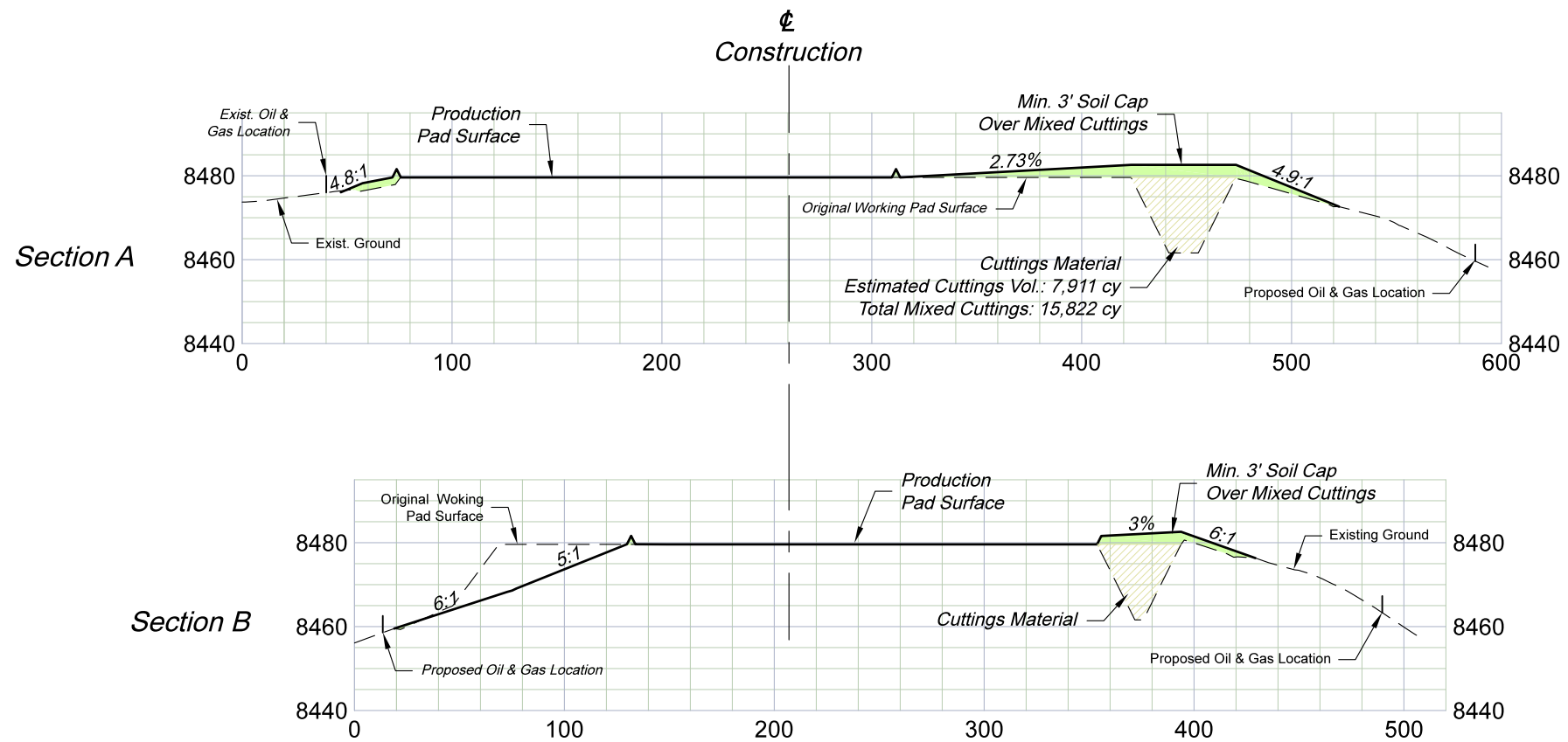
LEGEND
Reclaimed Area 
UnReclaimed Area 



SCALE:	1" = 80'
DATE:	10/27/22
PROJECT:	Trail Ridge
DFT:	cs

REVISED: 3/23/23

Construction Plan Prepared for:
 TEP Rocky Mountain LLC
 TR 32-28-597 Drill Pad
 INTERIM RECLAMATION LAYOUT



SCALE: Horiz.: 1" = 80'
Vert.: 1" = 40'

*Reclaim Slopes Vary As Shown

ESTIMATED EARTHWORK QUANTITIES (cy)			Running TOTAL
Material Excavated, Stockpiled and Generated Cuttings	Interim Cut	15,470	15,470
	Un-Mixed Cuttings	+7,911	23,380
	Topsoil Stockpile	+5,450	28,830
Reclaim Fill Material	Mixed Cuttings	-15,822	13,010
	Remaining Fill ¹	-13,009	0
Total Remaining to Balance		0	

¹Remaining Fill= Any Cut Not Used for Mixing Cuttings + Topsoil

REVISED: 4/20/23b



SCALE:	As Noted
DATE:	8/22
PROJECT:	Trail Ridge
DFT:	cs

Construction Plan Prepared for:



TR 32-28-597 Drill Pad

INTERIM RECLAMATION CROSS SECTIONS