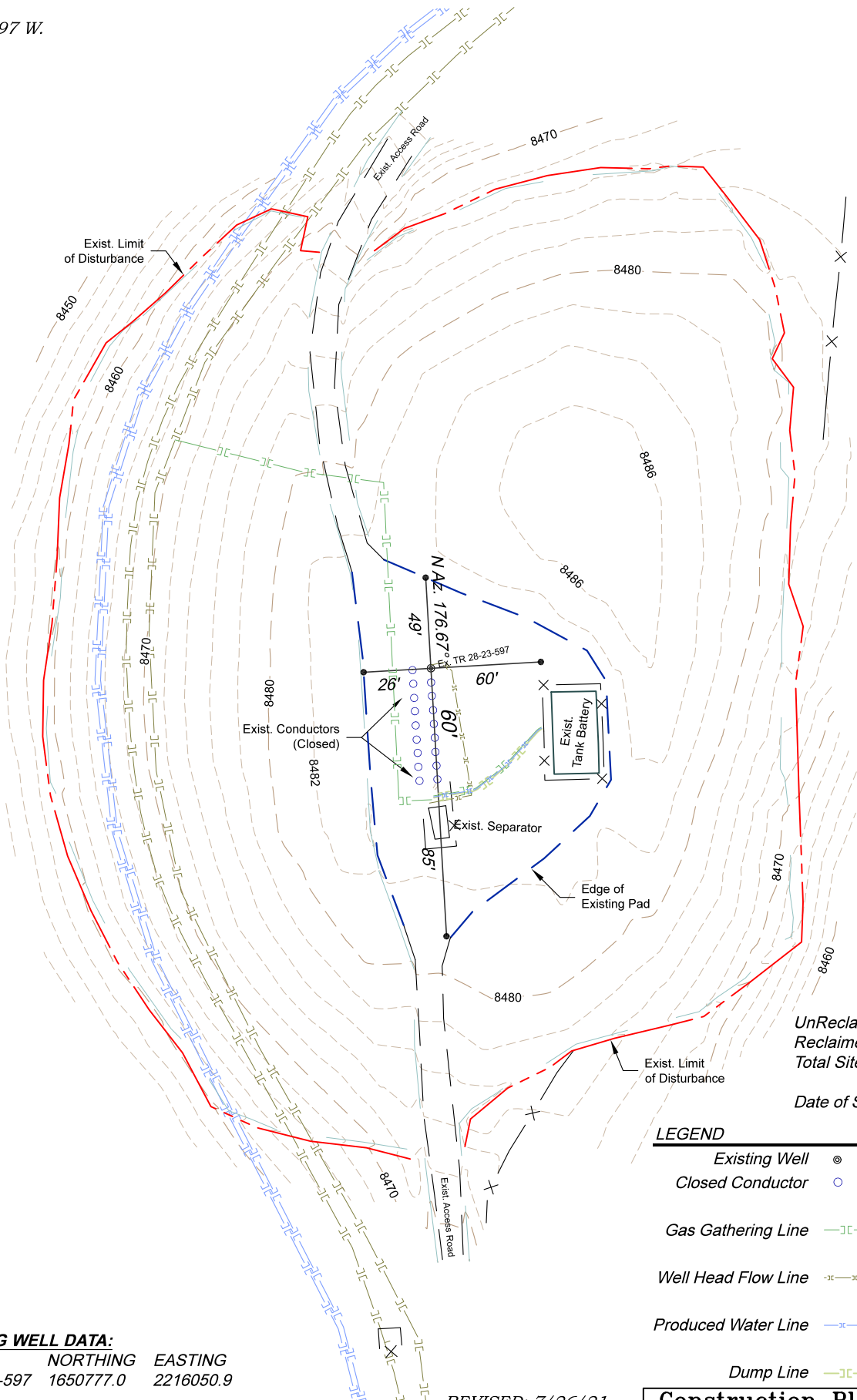
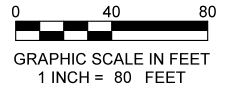


Section 28  
T. 5 S., R. 97 W.



UnReclaimed Area: ±0.54 ac.  
Reclaimed Area: ±3.56 ac.  
Total Site Disturbance: ±4.10 ac.

Date of Survey: 6/23/21

**LEGEND**

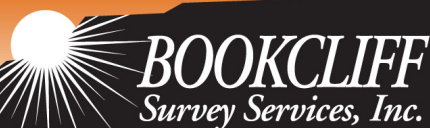
- Existing Well    ⊙
- Closed Conductor    ○
- Gas Gathering Line    —[ ]—[ ]—[ ]—[ ]—[ ]—[ ]—
- Well Head Flow Line    -x-x-x-x-x-x-x-x-x-x-x-x-x-x-x-x-
- Produced Water Line    -x-x-x-x-x-x-x-x-x-x-x-x-x-x-x-x-
- Dump Line    —[ ]—[ ]—[ ]—[ ]—[ ]—[ ]—

**EXISTING WELL DATA:**

WELL	NORTHING	EASTING
TR 32-28-597	1650777.0	2216050.9

REVISED: 7/26/21

136 East Third Street  
Rifle, Colorado 81650  
Ph. (970) 625-2720  
Fax (970) 625-2773



SCALE:	1" = 80'
DATE:	6/24/21
PLAT:	1 of 1
PROJECT:	TEP Trail Ridge
DFT:	cs

**Construction Plan Prepared for:**

**TERRA ENERGY PARTNERS** TEP Rocky Mountain LLC

TR 32-28-597 Drill Pad  
As-CONSTRUCTED LOCATION