

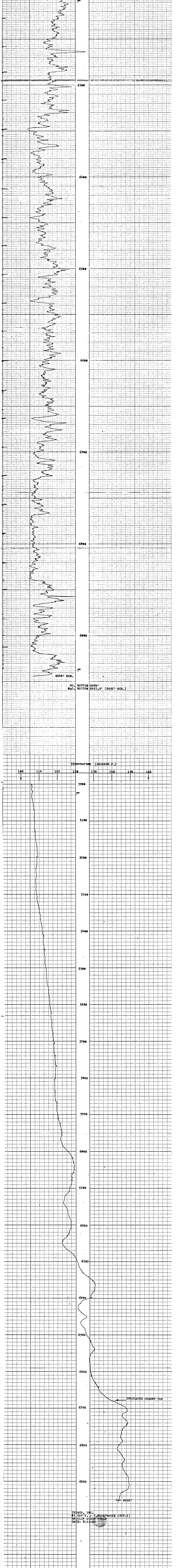


COMPANY: TEIACO, INC.
#1 GOV'T. - T.F. STROOCK (NCT-1)
MADRLIN GULCH
COUNTY: MOFFAT STATE: COLORADO
LOCATION: 270' N. AND 690' W. OF
K/4 CORNER

PERMANENT DATUM (GROUND) LEVEL: 8058'
LOG MEASURED FROM K.B. 12 FT ABOVE PERMANENT DATUM OF: 8058'
DATE LOG MEASURED FROM: 8-11-56

SEC. 35 TWP. 48 N. R. 95 W. ELEVATIONS:
8058' 8078' 8058'

WELL NO.	1	TEMP. LOG	1
DEPTH-DRILLER	6944'	DEPTH-DRILLER	6944'
BOTTOM LOGGED INTERVAL	6944' SCH. (6945.5' MCG)	BOTTOM LOGGED INTERVAL	6944'
TOP LOGGED INTERVAL	6200'	TOP LOGGED INTERVAL	5000'
TYPE FLUID IN HOLE	WATER	TYPE FLUID IN HOLE	WATER
DESIGNY LEGAL	FULL	DESIGNY LEGAL	FULL
MAX. REC. TEMP. BEG. F.	---	MAX. REC. TEMP. BEG. F.	---
TEMP. LOG TIME	---	TEMP. LOG TIME	---
WITNESSED BY	M. J. ROBERTS	WITNESSED BY	M. J. ROBERTS
RUN IN	---	RUN IN	---
TIME	1:15	TIME	1:15
LOG	860'	LOG	860'
DATE	8-11-56	DATE	8-11-56



TEIACO, INC.
#1 GOV'T. - T.F. STROOCK (NCT-1)
MADRLIN GULCH FIELD
DATE: 8-11-56