

2024 CCR 0994-23-02 Oil and Gas Development Plan

Emergency Response Plan ECMC Rule 304.c.(8)



**Laramie Energy, LLC
3199 D Rd. Bldg A2
Grand Junction, CO 81504**

2024 CCR 0994-23-02 Oil and Gas Development Plan Emergency Response Plan ECMC Rule 304.c.(8)



1. INTRODUCTION

The purpose of the Laramie Energy 2024 CCR 0994-23-02 Oil and Gas Development Plan Emergency Response Plan (CCR ERP) is to provide employees and contractors working at CCR 0994-23-02 well pad (CCR Pad) in the Laramie Energy, LLC's (Laramie) (Operator # 10433) with emergency procedures and phone numbers for local emergency response agencies that should be contacted in the event of an emergency at the pad.

The following plan addresses the applicable requirements for the Colorado Energy and Carbon Management Commission (referred to hereinafter as ECMC or the Commission) Rule 304.c.(8) Emergency Response Plan under 300 Series of the Commission's rules as required for a Form 2A Location Assessment permit application. The CCR ERP was developed in accordance with ECMC Rule 602.j. and ECMC Emergency Response Plan Guidance (February 16, 2021).

The subject ERP was prepared to provide site-specific emergency response information for the CCR Pad. The plan includes emergency routes, site location descriptions, and Laramie's Emergency Action Plan (ERP), detailing fieldwide emergency response actions. Employees and contractors shall familiarize themselves with emergency plans and emergency routes if accessing the CCR Pad location.

2. LOCAL EMERGENCY AGENCY APPROVAL - ECMC RULE 602.j.

In accordance with ECMC Rule 602.j., the CCR ERP was approved by the Plateau Valley Fire Protection District on August 29, 2024. Signature of approval is provided in **Appendix A**.

3. CCR 0994-23-02 WELL PAD – LOCATION DETAILS

The 2024 CCR 0994-23-02 OGDG involves construction, drilling, completions, and production of the Location. Site-specific details are provided in the CCR ERP, including location details, access route maps, coordinates, and location summary. The CCR Pad is located within Laramie's Plateau Valley operations area in Mesa County, Colorado.

**2024 CCR 0994-23-02 Oil and Gas Development Plan
Emergency Response Plan
ECMC Rule 304.c.(8)**



Table 1. Location Description

Location Name	CCR 0994-23-02
ECMC Location ID Number	New Location
Legal Description	NWNE of Section 23, Township 9 South, Range 94 West, 6 th P.M.
Location Coordinates	Latitude: 39.268132° Longitude: -107.847692°
Elevation	7142 feet
County	Mesa
Zone District	Agricultural, Forestry, Transitional District (AFT)
Parcel Number	2665-231-00-220, 2665-232-00-219, 2665-232-00-237
Surface Owner	Colorado Canyon Ranch LLC (CCR) 9800 Metcalf Ave - 5th Floor Overland Park, KS 66212

The project will result in a total of 10.2-acre disturbance, including well pad, access road, and buried pipeline. If approved, the proposed well pad will be constructed to create an approximate 5.2 acre Working Pad Surface (WPS) to accommodate drilling equipment, piping, a truck/equipment turn-around location, and facilities for two (2) horizontal gas wells developing fee minerals. The Area of Disturbance for the CCR well pad, including cut and fill slopes and soil stockpiles, will be approximately 7.5 acres. Acreage disturbance for the project is detailed in **Table 3**.

Construction of the CCR access road will result in 1.9 acres of new disturbance. Approximately 2,542 feet of new access road would be constructed to access the subject well pad. The access road was designed to the BLM’s Gold Book standards (revised edition 2017).

Approximately 703 feet of 12-inch welded steel gas gathering line and 4-inch Flexpipe water line will be required to tie into Laramie’s existing 16-inch gas gathering line and 4-inch Flexpipe waterline south of the proposed pad. The gas pipeline and water gathering line will result in 0.8 acres of surface disturbance. Once the pipelines are installed, the disturbance will be immediately reclaimed.

Interim reclamation will begin after all wells are drilled and completed as planned with production facilities installed at the CCR. During interim reclamation, the cut and fill slopes will be reshaped and contoured, reclaiming approximately 5.2 acres. The Production Pad Surface (long-term well pad disturbance) will be 2.3 acres. The total long-term disturbance associated with this pad and access road will be 4.2 acres.

**2024 CCR 0994-23-02 Oil and Gas Development Plan
Emergency Response Plan
ECMC Rule 304.c.(8)**



Table 2. Disturbance Acreage

Well Pad		Disturbance in Acres
Area of Disturbance		7.5
Working Pad Surface		4.3
Area to be Interim Reclaimed		5.2
Production Pad Surface (after Interim Reclamation)		2.3
Access Road		Disturbance in Acres
Proposed Access Road Acreage (2,542 feet length)		1.9
Pipeline		Disturbance in Acres
Proposed Pipeline (703 feet length)		0.8
Disturbance Totals - Acres		
TOTAL DISTURBANCE	Short-term	Long Term
10.2	6.0	4.2

4. DIRECTIONS TO THE CCR 0994-23-02 FROM NEAREST PUBLIC ROAD

The CCR Pad is located in a remote area approximately 6 mapped miles east of Collbran, Colorado. The nearest public road intersection is Mesa County Road 64 3/10 (64 3/10 Rd) (also known as Brush Creek Road) and HWY 330. The nearest public road is 64 3/10 Rd, which is 2,542 feet (access /travel distance) from the CCR Pad. The CCR Pad is located approximately 1,560 feet southeast (mapped distance) from 64 3/10 Rd.

A driveway permit is required since the well pad will be accessed from 64 3/10 Rd. KLJ Engineering (contractor) submitted a driveway permit to Mesa County on July 10th, 2024. On August 20, 2024, Mesa County issued the driveway permit (Access Permit #: DW24-0139). At the intersection of the CCR access road entrance with 64 3/10 Rd, the public road is graveled.

- To access the project, vehicles would travel east from Collbran, CO, on what is commonly referred to as CR 330E for approximately 6.5 access miles.
- Vehicles will turn left (north) onto a Mesa County Road 64 3/10.
- Vehicles will head north for approximately 950 feet until reaching the entrance of the CCR Pad access road located on the right (west) side (Driveway entrance - Lat: 39.266527; Long: -107.854687).
- Vehicles will turn right (east) onto the CCR Pad access road located on private surface owned by Colorado Canyon Ranch.
- Vehicles will continue east for 2,542 feet until reaching the entrance of the CCR Pad.

Emergency access routes maps are provided in **Appendix B**.

**2024 CCR 0994-23-02 Oil and Gas Development Plan
Emergency Response Plan
ECMC Rule 304.c.(8)**



5. INGRESS AND EGRESS

The CCR Pad access road will be accessed via a new private access road located on private surface owned by Colorado Canyon Ranch. Laramie will maintain the access road, providing safe and accessible access to vehicles.

6. EMERGENCY CONTACT INFORMATION

Location details and emergency contacts are listed below in **Table 3** and in the Notification Chart (**Appendix C**). Addition emergency contacts are listed in the Laramie Emergency Action Plan.

Table 3. Emergency Contacts and Notification Information

CCR 0994-23-02 WELL PAD – EMERGENCY CONTACTS	
Site Name	CCR 0994-23-02
Legal Description	NWNE of Section 23, Township 9 South, Range 94 West, 6 th P.M.
Coordinates	Latitude: 39.268132° Longitude: -107.847692°
Operator	Laramie Energy, LLC 3199 D Rd. Bldg A2 Grand Junction, CO 81504 Operator Number - 10433
Landowner/Surface Owner	Laramie Energy, LLC
Operations Area	Brush Creek / Plateau Valley
Health & Safety Coordinator	Greg Anoa 970-263-3627 – Office 970-216-1387 - Cell ganoia@laramie-energy.com
South Production Manager	Rory Mortensen 970-778-5161 – Cell 970-487-3843 – Office
Regulatory & Environmental Manager For spills, environmental, wildlife	Wayne Bankert 970-985-5383 - Cell 970-812-5310 - Office
Plateau Valley Fire Protection District	2004 Elm Street Collbran, CO 81624 (970)487-3762
CareFlight	(800) 332-4923
Mesa County Sheriff	970-242-6707
Saint Mary’s Hospital	970-244-2273
Colorado State Patrol	970-249-4392



7. MUTUAL AID AGENCIES

PLATEAU VALLEY FIRE PROTECTION DISTRICT	
Collbran Station 91	Fire Chief
2004 Elm Street Collbran, CO 81624 (970)487-3762	Kevin Henderson k.Henderson@pvfiredept.org
49084 KE Rd # ½. Mesa Co 81643 (970) 268-5283	

8. STAFF OF LOCAL AND MUTUAL AGENCIES

The Plateau Valley Fire Protection District provides Fire and EMS service to Collbran, Mesa, Molina, and surrounding rural areas. The Plateau Valley Fire Protection District has three station locations: Mesa Station 92, Molina Station 93, and Collbran Station 91. Collbran Station 91 is the nearest station to the CCR Pad.

The Plateau Valley Fire Protection District has 8 staff and 17 volunteers. The Plateau Valley Fire Protection District has three (3) full time staff during the day and two (2) full time staff plus (1) ALS provider during the night shift. The Plateau Valley Fire Protection District provides 24/7 Advanced Life Support ambulance service and has 3 ambulances. The Plateau Valley Fire Protection District has a county wide mutual aid agreement that gives access to 10 more ambulances and up to 4 helicopters. The Plateau Valley Fire Protection District multiple resources for firefighting including brush trucks.

9. PROPOSED OPERATIONS DESCRIPTION

The Form 2A is requesting to permit a new oil and gas location. The proposed well pad is located on private property and will be operated by Laramie. Laramie is proposing two (2) new wells to be drilled at the subject well pad. The well pad will be situation within Laramie’s Plateau Valley operations area.

The CCR Pad will utilize a closed-loop drilling system. Both water-based drilling muds (for the vertical portion) and oil-based drilling muds (for the horizon section) will be utilized for the 2 new horizontal wells. The site will operate in accordance with applicable local, state, and Federal regulations.

**2024 CCR 0994-23-02 Oil and Gas Development Plan
Emergency Response Plan
ECMC Rule 304.c.(8)**



Table 4. Duration of Operational Phases

Phase/Activity /Stage	Timeframe (Days)
Construction	50
Production Equipment Installation	30
Drilling Mobilization	7
Drilling	46
Drilling Demobilization	7
Completions Mobilization	10
Completions and Flowback	48
Completions Demobilization	10
Interim Reclamation	14
Total Pre-Production Timeframe	222
Production	Up to 30 years
Inspection Activities	Will Occur During All Phases

10. OPERATIONS LAYOUT AND EQUIPMENT LIST

Layout drawings for each operational phase are provided in **Appendix D** of the CCR ERP. Preliminary equipment placement is subject to equipment availability. All equipment, pre-production & production, will be located on Laramie owned surface.

Pre-production (drilling, completions, and flowback) phase equipment is listed below in **Table 5**. Equipment will be mobilized to the CCR Pad and will be removed upon well completion.

Table 5. Pre-Production Equipment List – CCR Pad

Equipment	Number of Units	Total Capacity
Drill Rig	1	
Upright tanks for Freshwater storage tanks	4	1600 barrels
Mud pits	6-8	400-600bbls
Trip tanks	2	80 barrels
Mud shack	2	
Rig diesel tank	1	240 barrels
Mud pumps	2	
Generators	3	
Cutting Management Area	1	
Cuttings Tank	1	
Rig Office	1	
Company Man	1	
Crew Camp	4	
Water Tank	2	TBD
Sewer Tank	2	TBD
Frac Tanks	80	40,000 barrels
Frac Pump (diesel)	12	2,760 gallons
Charge Pump / Blender	1	100 gallons

**2024 CCR 0994-23-02 Oil and Gas Development Plan
Emergency Response Plan
ECMC Rule 304.c.(8)**



Production equipment will be located onsite during production operations. Production equipment is listed below in **Table 6**.

Table 6. Proposed Production Equipment

Equipment		Number of Units	Total Capacity
Oil Tanks		1	400 barrels
Produced Water Tanks		2	800 barrels
Gunbarrel Tanks		1	400 barrels
Sand Tanks		1	400 barrels
Portable Chemical Storage Unit	(Downhole scale inhibitor)	2	1320 gallons
	(Methanol tote with injection pump)	2	
Enclosed Combustion Device (ECD)		1	109 MCFD
Heat exchanger with burner (One per Separator)		2	1500 MMBTU/HR
Separator		2	Horizontal
Sand Trap		2	
Line Heaters (heat exchangers)		2	
Water Pump		2	1700 bbl/day
Power Generator		2	65 kW each
Knockout and Pump		1	
Thermoelectric Generator		1	

Tanks that will be installed at the CCR will have a capacity of 400 barrels each with a total capacity of 2,000 barrels for the CCR Pad. Tanks will be vapor manifolded together and will be routed to an enclosed combustor. Each tank will be located more than 3 feet apart in accordance with ECMC Rule 608.a.(2).A. Laramie will label all tanks on the subject pad to comply with ECMC Rule 605.h. and Rule 608.a.(12).

11. SENSITIVE AREAS

The following cultural features are **not** located within 2,000 feet of the CCR Pad:

- A High Occupancy Building Unit
- A School Facility
- A Designated Outside Activity Area boundary
- and railroad.

An above ground utility is located 1,760 feet to the southwest at the nearest point. Power poles and lines run in a north-south direction along 64 3/10 Road (Brush Creek Road). Another set of power poles and lines run east and west just north of HWY 330. The distance of the above ground utilities meets stated in ECMC Rule 604.a.(1), which requires a well to be located more than 200 feet from an above ground utility.

2024 CCR 0994-23-02 Oil and Gas Development Plan

Emergency Response Plan

ECMC Rule 304.c.(8)



The proposed development will not result in any disturbance to CPW mapped High Priority Habitat. Mapped Aquatic Sportfish Management Waters buffer along Buzzard Creek is located 66 feet downgradient. Buzzard Creek is located 578 feet from the WPS. Laramie has consulted with CPW regarding the proposed project.

The CCR Pad is not considered a Sensitive Areas. Buzzard Creek, a perennial stream, is located downgradient 578 feet north at the nearest point. Buzzard Creek contains field-verified wetland features downgradient of the well pad. Wetland habitat consisting of dense willow thickets occur adjacent to Buzzard Creek. Dense vegetation comprised of oakbrush, mountain shrublands, and willows are present along the hillside below the proposed CCR Pad location, creating a natural buffer between Buzzard Creek and the proposed well pad.

There are two (2) Residential Building Units (RBU) within 2,000 feet of the proposed WPS. Laramie has communicated with the residential building owners and tenants. One RBU is located 1,873 feet west of the WPS. The second RBU is located 1,948 feet south of the WPS is located on the opposite side of HWY 330. The second RBU is located greater than 2,000 feet from all production and permanent equipment. Laramie has contacted the RBUs owners and provided letters detailing proposed operations. As part of the OGD, a noise mitigation plan, light mitigation plan, and odor plan will be submitted to the ECMC to minimize and mitigate potential impacts.

12. POTENTIAL IMPACTS AND MITIGATION

Potential spills will be mitigated by the construction of BMPs, installation of containment, the continuous presence of personnel during pre-production operations to monitor equipment, remote monitoring during production, and daily site visits during production operations.

Tanks will be installed within secondary containment, in accordance with ECMC Rule 603.o.(1). Secondary containment will be sized to contain 150 percent of the volume of the largest tank. All proposed tanks have a capacity of 400 barrels. The capacity for secondary containment, therefore, will be sized to contain a minimum of 600 barrels at the Laramie CCR Pad. The containment will be constructed of metal wall and spray-in liner. Spray-in liners are more durable and has a longer lifespan than HDPE liners. The spray-in liner will minimize potential spill incidents and impacts.

During production, tanks will be equipped with dedicated continuous monitoring through a SCADA platform at the CCR Pad for remote monitoring, alerting, and shut-in capabilities. Laramie's SCADA system, which provides real-time fluid level data, will allow for continuous monitoring of tank volumes.

During production, four (4) 330-gallon chemical storage units with secondary containment

2024 CCR 0994-23-02 Oil and Gas Development Plan

Emergency Response Plan

ECMC Rule 304.c.(8)



will be located on the Production Pad Surface. Each portable chemical storage unit is outfitted with a secondary containment feature which is adequate for the size of the storage tank prevent discharges. Two (2) of the chemicals storage units stored on location will consist of corrosion/scale inhibitor, wetting agent, and H₂S scavenger. Two (2) of the chemical storage units are methanol totes with injection pump.

Mitigation efforts and spill response are described in the CCR Leak Detection Plan and Laramie's Spill Prevention Control and Countermeasure Plan: Western Colorado Facilities. Additional response actions detailed in the Emergency Action Plan (**Appendix E**).

13. EMERGENCY RESPONSE EQUIPMENT

During drilling, completions, and flowback operations, a fully equipped emergency spill response trailer will be staged at an adjacent Laramie operated Oil and Gas Location, the David 23-7 well pad (Location ID # 334500) and prepared for immediate response in the event of the release or spill during pre-production activities. A second emergency spill response trailer will be available for immediate mobilization if needed at Laramie's Harrison Creek Water Treatment Facility (Location ID # 413056) approximately 7 miles from the CCR Pad location.

An emergency spill kit (95-gallon drum spill kit) will be placed on the pad for any spills that might occur for the life of the producing wells. Any spills that occur will be reported in compliance with ECMC rules and procedures.

14. HEALTH AND SAFETY ACTION LEVELS

Laramie Energy uses a risk based classification system, based on ISO 31000 standards for Risk. Incidents are classified as Critical, Serious, Moderate and Minor. As shown in **Table 7**. Laramie management will determine the action level or decontamination severity; and will evacuate and report based on the severity level. Laramie management is responsible for taking tactical actions to mitigate emergencies and will protect life, environment and property, in that order. The Laramie ERP applies to E&P production locations located in Garfield, Mesa, and Rio Blanco counties.

**2024 CCR 0994-23-02 Oil and Gas Development Plan
Emergency Response Plan
ECMC Rule 304.c.(8)**



Table 7. Risk Based Classification System

Level	People	Environment	Assets
4 Critical	<ul style="list-style-type: none"> • Fatality • Long-term health impact • Permanent disability • Life altering injury or illness • Evacuation of a facility and community • Action from landowner/activist involving weapons 	<ul style="list-style-type: none"> • Severe long-term environmental damage • Wide-spread impacts to sensitive environments, wildlife and/or major bodies of water • Significant off lease/site groundwater impacts 	<ul style="list-style-type: none"> • One month facility/ equipment outage • Production, equipment, property, motor vehicle loss and or damage greater than \$10 million • Terrorist attack/attempt
3 Serious	<ul style="list-style-type: none"> • Short term health impact • Lost time injury or illness • Evacuation of facility and immediate area • Violent action from landowner/activist 	<ul style="list-style-type: none"> • Severe short-term environmental damage • Localized on lease groundwater impacts • Significant off lease/site surface impacts 	<ul style="list-style-type: none"> • One week facility/ equipment outage • Production, equipment, property, motor vehicle loss and or damage greater than \$1 million • Substantial loss from theft/vandalism
2 Moderate	<ul style="list-style-type: none"> • Medical aid injury or illness • Restricted work /modified duties • Evacuation of job site • Specific threat from landowner/activist 	<ul style="list-style-type: none"> • Moderate environmental damage • No groundwater impacts • Localized off lease/site surface impacts • Immediate clean up 	<ul style="list-style-type: none"> • Short term (less than one week) facility/ equipment outage • Production, equipment, property, motor vehicle loss and or damage greater than \$100,000 • Major Property crime
1 Minor	<ul style="list-style-type: none"> • First Aid injury or illness • Implied threat from landowner/activist 	<ul style="list-style-type: none"> • Minor environmental damage • Localized on lease/site surface impacts 	<ul style="list-style-type: none"> • Negligible production loss • Production, equipment, property, motor vehicle loss and/or damage less than \$100,000 • Minor property crime

15. COORDINATION WITH LOCAL RESPONDERS

Laramie is a member of the Mesa County Local Emergency Planning Committee (LEPC). Laramie participates in discussions on oil and gas related issues and topics. The PVFPD was invited to the CRR Pad Pre-Application onsite meeting on July 10, 2024, but was not able to attend.

16. EMERGENCY RESPONSE DOCUMENT GUIDE

LIST OF APPENDICES	
Appendix A	Rule 602.j. Local Emergency Response Agency
Appendix B	Emergency Access and Haul Route Maps
Appendix C	Emergency Notification Chart
Appendix D	CCR Pad Layout Drawings
Appendix E	Emergency Action Plan



Appendix A

ECMC Rule 602.j. Local Emergency Response Agency

Approval of 2024 CCR 0994-23-02 OGDG ERP

**Laramie Energy, LLC
2024 CCR 0994-23-02 OGD
Emergency Response Plan**

**Colorado Energy & Carbon Management Commission
Rule 602.j. Local Emergency Response Agency**

Grand Junction Office
3199 D Rd. Bldg A2
Grand Junction, CO 81504

Corporate Office
1700 Lincoln Street, Suite 3950
Denver, CO 80203

The following Emergency Response Plan is approved by:

Plateau Valley Fire Protection District

Staff: Carol Hill

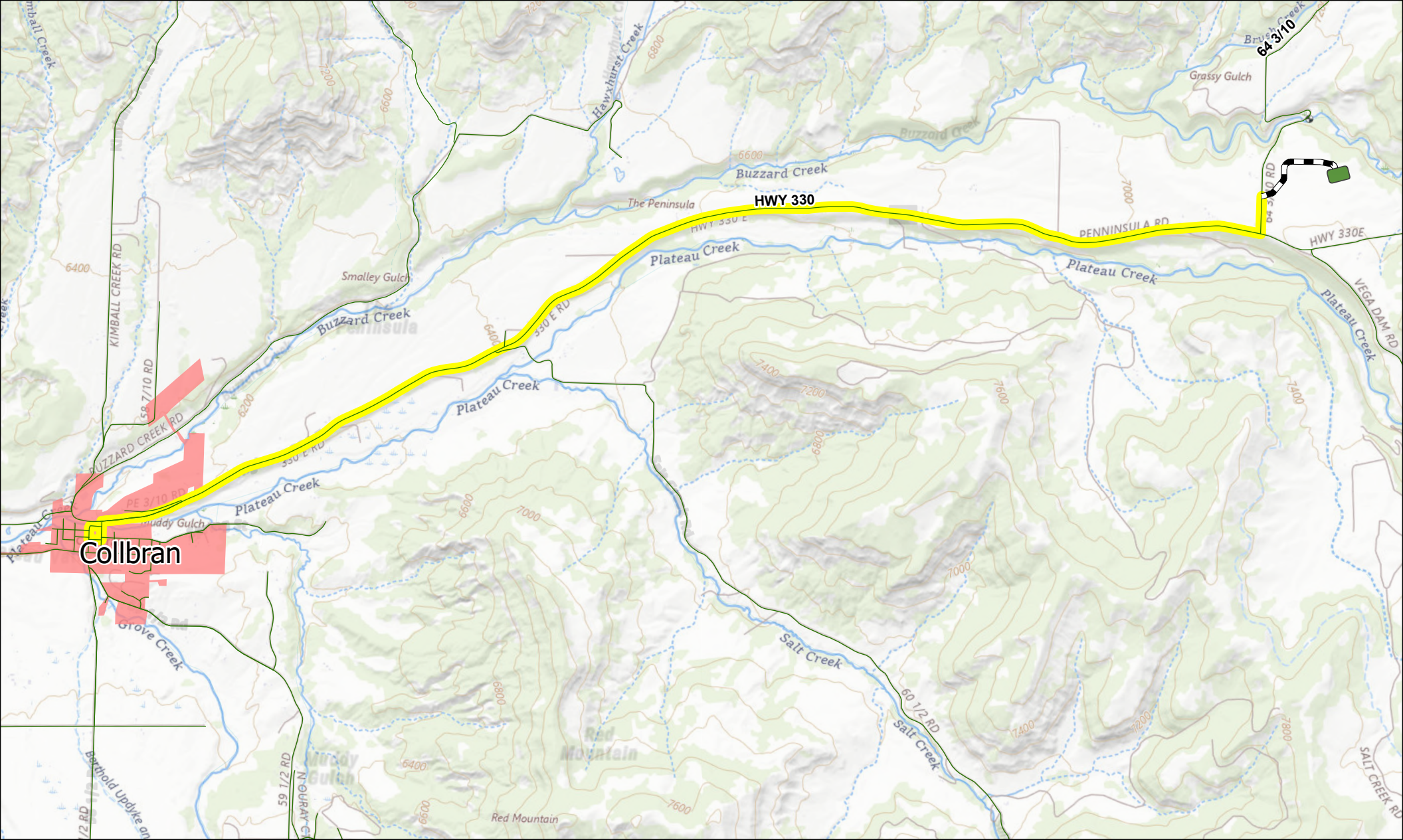
Title: Administrative Assistant






Date: 8.29.2024

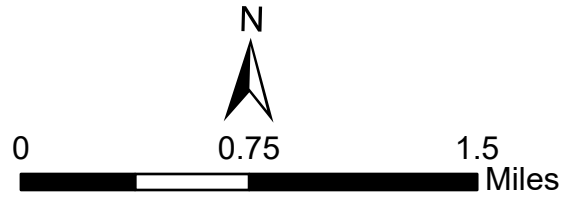


Appendix B

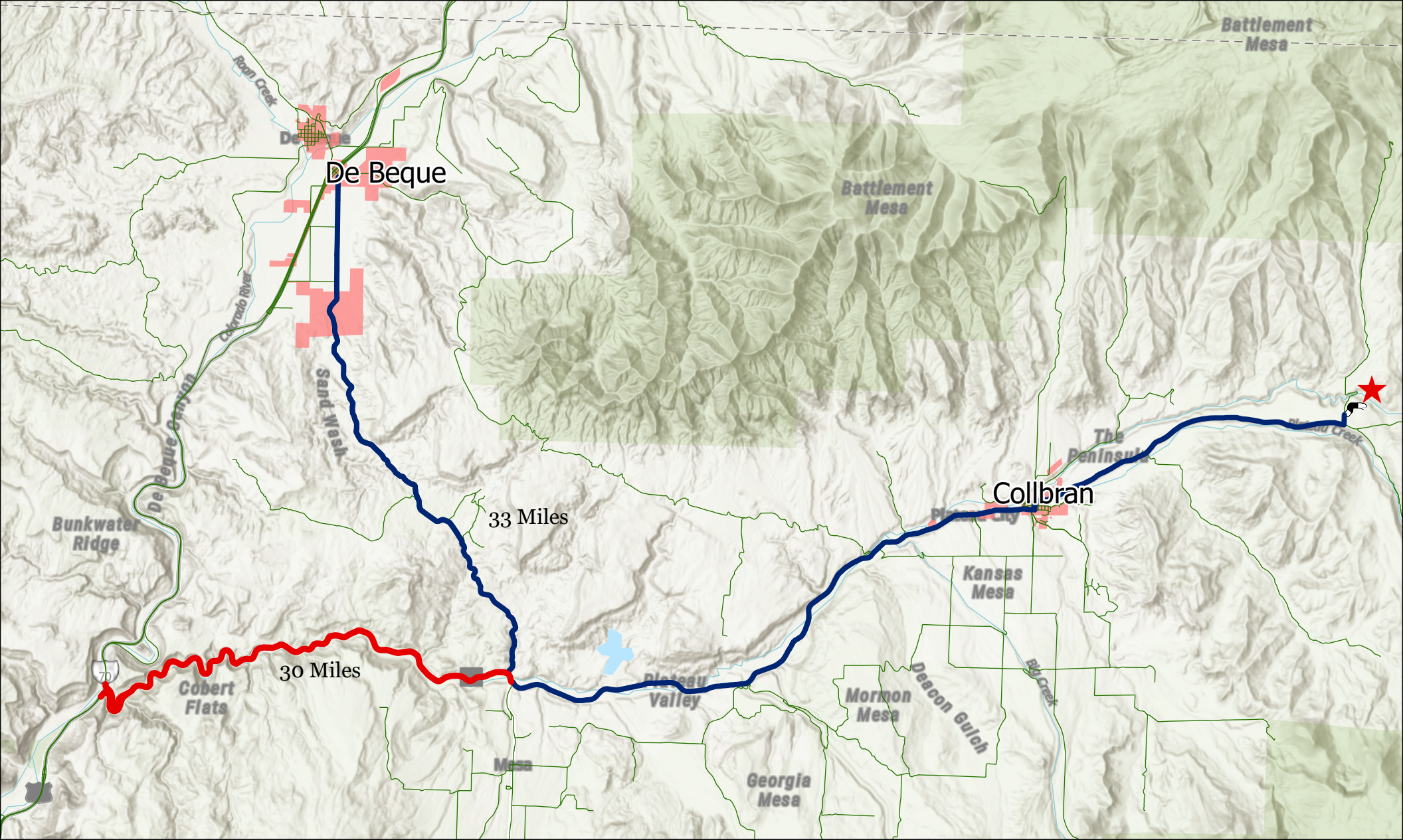
Emergency Access and Haul Route Maps








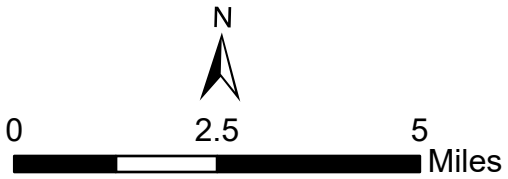
-  Public Roads
-  CCR 0094 03-02 Access Road
-  Emergency Access
-  CCR 0994-23-02
-  Town of Collbran Municipal Boundary



**Emergency Access
Route Map**
 CCR 0994-23-02 Pad
 NWNE, SECTION 23,
 T9S, R94W, 6th P.M.
 MESA COUNTY, CO



-  Site Location
-  Public Roads
-  CCR 0994 23-02 Access Road 2,542 ft
-  Route 1 - 30 Miles
-  Route 2 - 33 Miles



Haul Route Map

CCR 0994-23-02 Pad
 NWNE, SECTION 23,
 T9S, R94W, 6th P.M.
 MESA COUNTY, CO



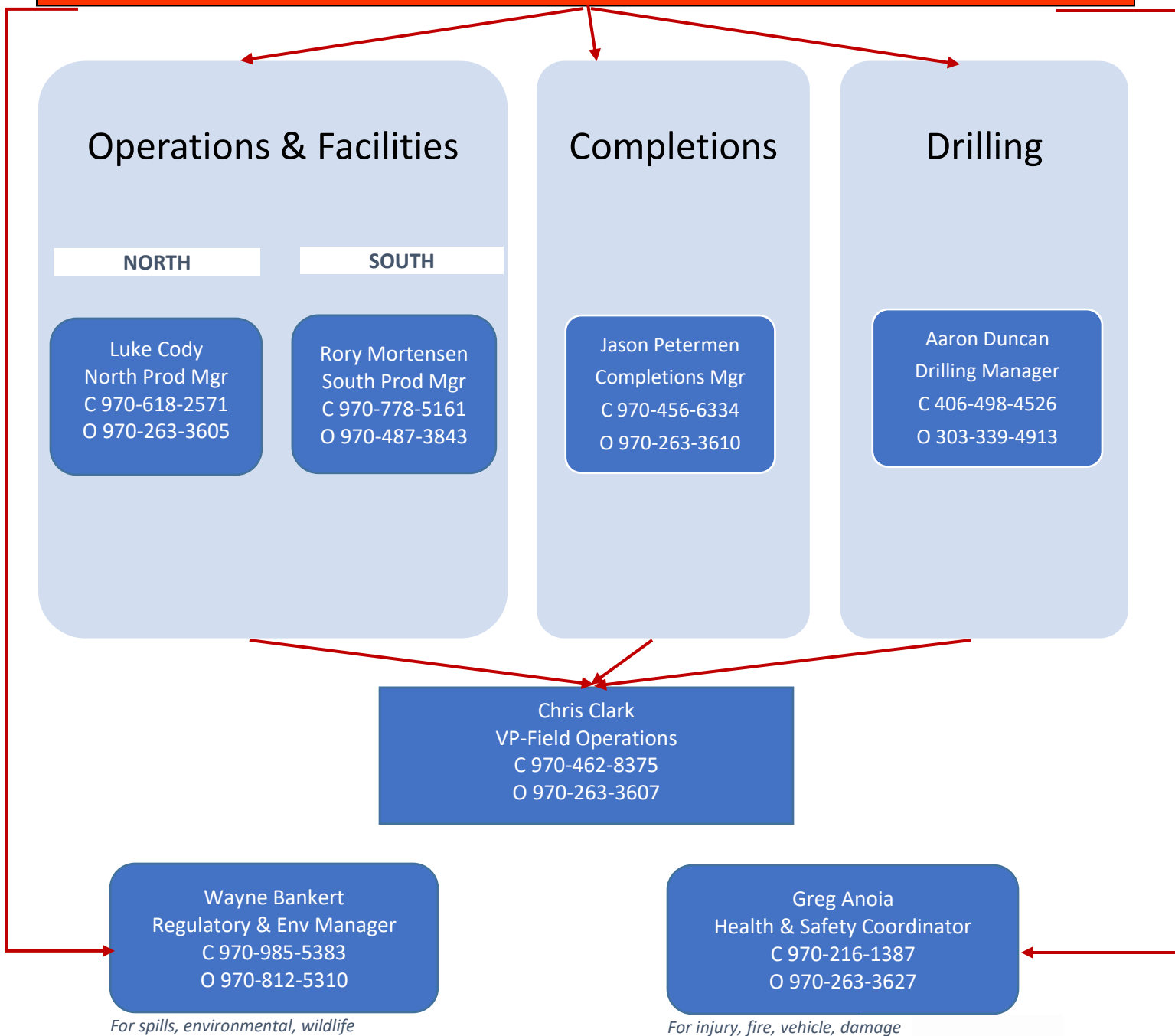
Appendix C

Emergency Notification Chart

Emergency Notification Chart

First Responder: contact emergency services as necessary 911. Direct Dispatch numbers are listed below.

****Verbal contact MUST be made or move to next person in line. Voicemail, email or text are not acceptable for emergency notification****



Mesa County Dispatch (Debeque/Collbran)	970-242-1234
Garfield County Dispatch (Rifle)	970-625-8095
Rio Blanco County Dispatch (Buckhorn Draw/Piceance)	970-878-9625
St. Mary's Careflight	970-332-4923
Poison Control Hotline	800-222-1222
Chemtrec	800-424-9300





Appendix D

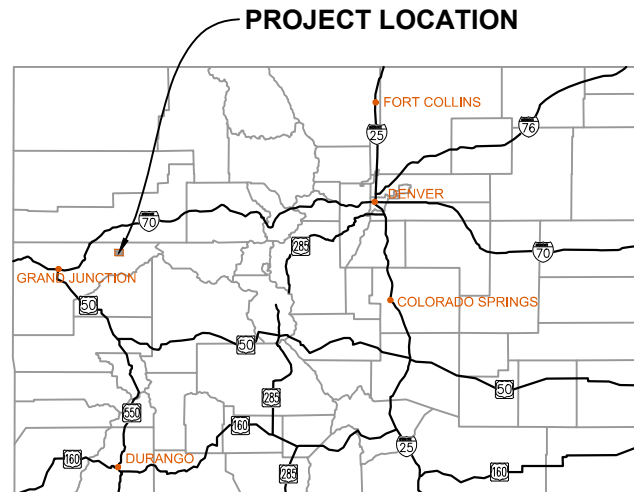
CCR 0994-23-02 Layout Drawings

CCR 0994-23-02 WELL PAD DESIGN

LARAMIE ENERGY, LLC

NWNE OF SECTION 23, T.9S., R.94W., 6TH P.M., MESA COUNTY, CO

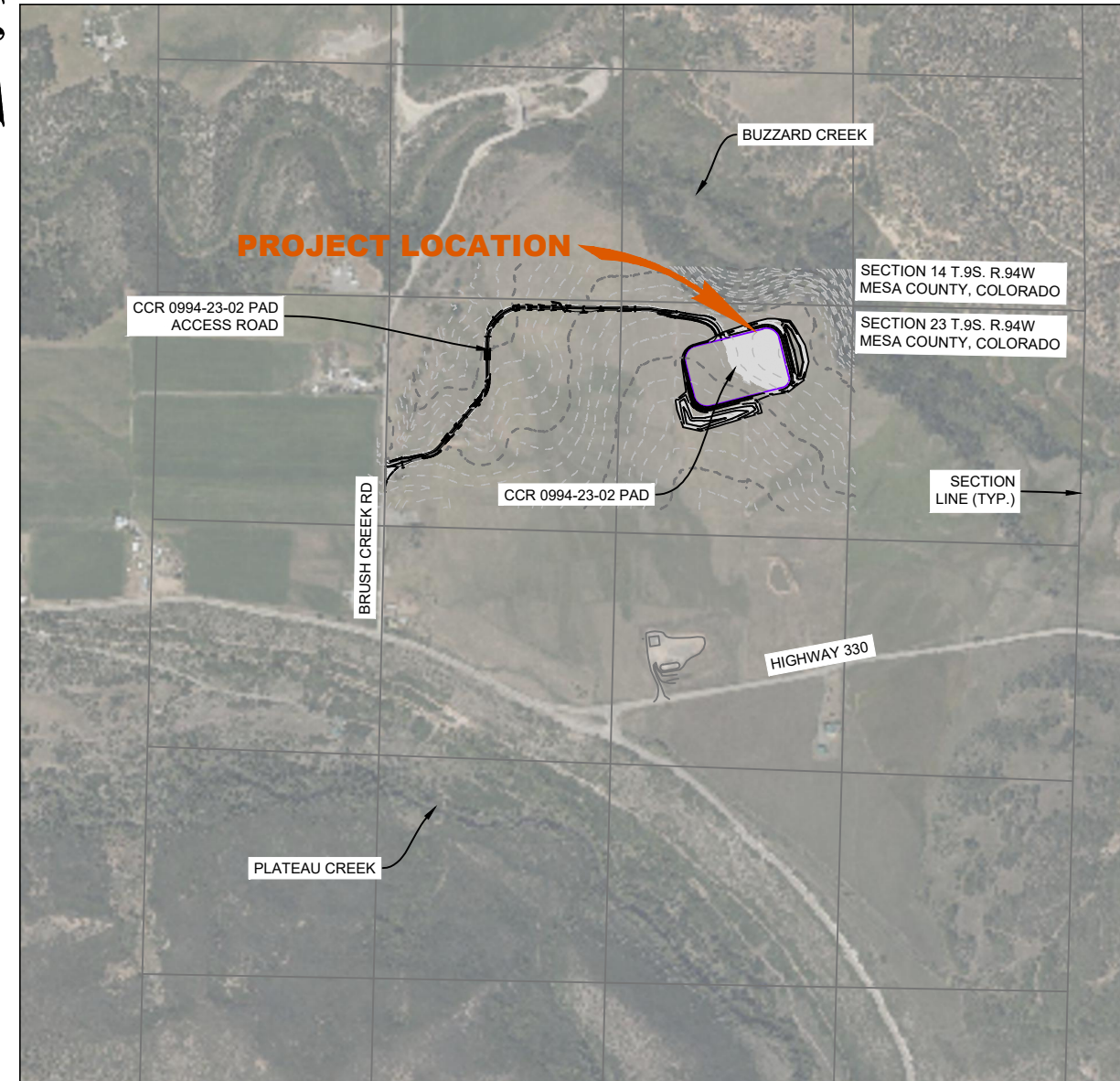
AUGUST 15, 2024



STATE OF COLORADO



NWNE OF SECTION 23, T.9S., R.94W., 6TH P.M., MESA COUNTY, CO



VICINITY MAP

1" = 1000'

INDEX OF SHEETS

1.01	COVER SHEET
2.01	ROAD TYPICAL SECTIONS AND NOTES
3.01	PLAN SHEET LAYOUT
4.01 - 4.04	ROAD PLAN AND PROFILE
5.01 - 5.02	ROAD CROSS SECTIONS
6.01	CULVERT CROSS SECTIONS
7.01 - 7.04	PAD LAYOUTS
8.01 - 8.02	PAD CROSS SECTIONS
9.01 - 9.02	COMPLETIONS AND PRODUCTION LAYOUTS
10.01	FINAL RECLAMATION LAYOUT

SITE INFORMATION

PAD:
CCR 0994-23-02

HORIZONTALS:
EASTERN - CCR 0994-11-A7-NH1
WESTERN - CCR FED 0994-11-A3-NH1

CERTIFICATION

I HEREBY CERTIFY THAT THE ATTACHED PLANS WERE PREPARED BY ME OR UNDER MY DIRECT SUPERVISION AND THAT I AM A DULY REGISTERED PROFESSIONAL ENGINEER IN THE STATE OF COLORADO.



DATE: _____



LARAMIE ENERGY, LLC
760 HORIZON DRIVE, SUITE 101
GRAND JUNCTION, CO 81506
PH: 303.339.4682
aedge@laramie-energy.com

KLJ ENGINEERING, LLC
1601 RIVERFRONT DRIVE, SUITE 204
GRAND JUNCTION, CO 81501
PH: 970.450.7474
www.kljeng.com



KLJ PROJECT NO. 2307-01465.2



STORMWATER VOLUME
 DESIGN STORM = 2-YEAR 24-HOUR
 NOAA POINT PRECIP. = 1.28 INCHES
 REQUIRED STORAGE VOLUME = 35,532 CUBIC FEET*
 (1.28 IN / 12 IN/FT * 7.5 AC * 43560 SQFT/AC)
 (* ASSUMES ZERO LOSS (E.G., INFILTRATION/EVAPORATION))
 VOLUME PROVIDED = 44,037 CUBIC FEET**
 (** INCLUDES FREEBOARD VOLUME)

STORMWATER BASIN DIRT BALANCE (IN CUBIC YARDS)
 BASIN: CUT = 2,138 / FILL = 56; NET = 2,082 CY (CUT)

PAD VOLUME SUMMARY

CUT FACTOR = 1.0
 CUT VOLUME = 32,444 CY (INCLUDES STORMWATER BASIN)
 FILL FACTOR = 1.15 (COMPACTION)
 FILL VOLUME = 31,133 CY
 NET = 1,311 CY (CUT)

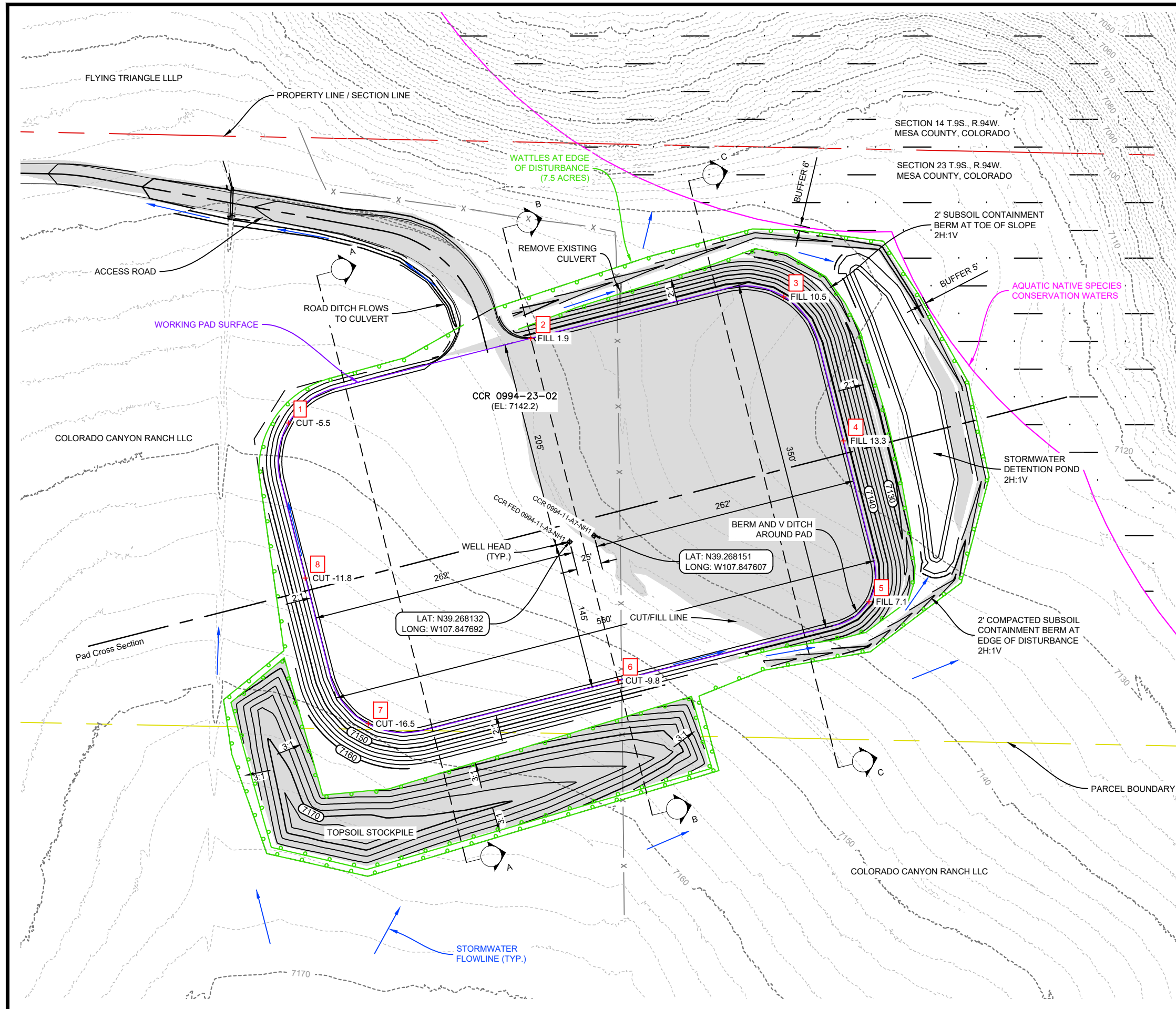
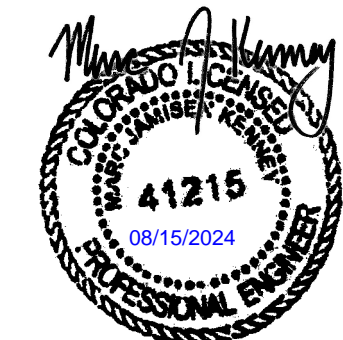
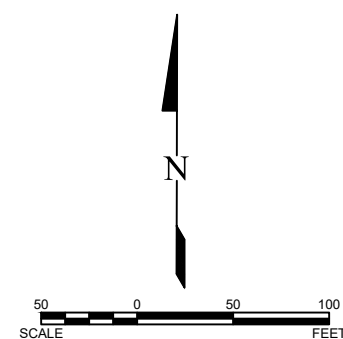
TOPSOIL VOLUME

EXISTING TOPSOIL DEPTH = 6.00 INCHES*
 (*AREA WEIGHTED AVERAGE DEPTH)
 AREA OF DISTURBANCE = 7.5 (ACRES)
 WORKING PAD SURFACE = 4.3 (ACRES)
 TOPSOIL STOCKPILE VOLUME = 6,190 CY

NOTES

1. CONTOUR INTERVAL IS 2 FEET.
2. EXISTING TOPOGRAPHY AND FEATURE DATA WERE COLLECTED BY WASATCH SURVEYING.
3. WELL PAD DIMENSIONS AND EQUIPMENT LAYOUTS PROVIDED BY LARAMIE ENERGY, LLC.

LEGEND	
	WATTLE
	EXISTING FENCE
	FILL
	HIGH PRIORITY HABITAT
	PARCEL BOUNDARY
	SECTION LINE



REVISION	DATE	NO.	DESCRIPTION
1	8/13/24	1	REVISED LABELS/COLORS AND ROAD DITCH

DRAFTED: JRH
 REVIEWED: MJK
 PROJECT NUMBER: 2307-01465.2
 ISSUE DATE: 8/15/24

CCR 0994-23-02 WELL PAD DESIGN
 LARAMIE ENERGY, LLC
 NWNE OF SECTION 23, T.9S., R.94W., 6TH P.M., MESA COUNTY, CO
CONSTRUCTION LAYOUT

SHEET
7.01



NO.	DATE	REVISION
1	8/13/24	REVISED LABELS/COLORS AND ROAD DITCH

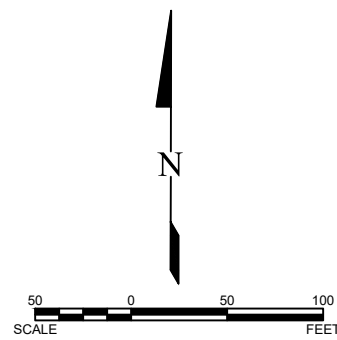
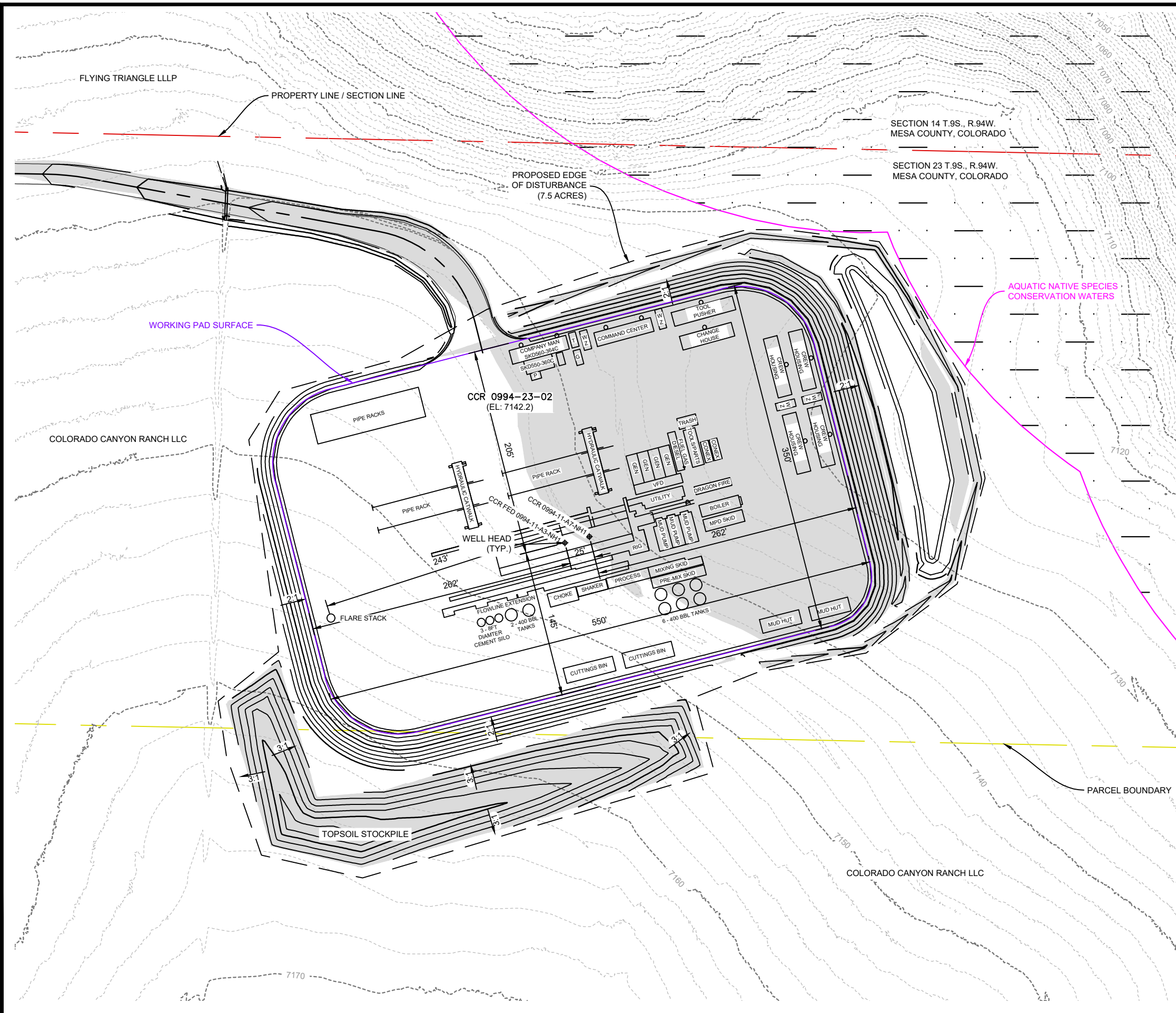
DRAFTED	JRH
REVIEWED	MJK
PROJECT NUMBER	2307-01465.2
ISSUE DATE	8/15/24

CCR 0994-23-02 WELL PAD DESIGN

LARAMIE ENERGY, LLC
 NW/4E OF SECTION 23, T.9S., R.94W., 6TH P.M., MESA COUNTY, CO

RIG LAYOUT

SHEET
7.02





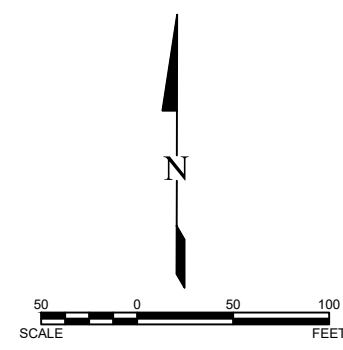
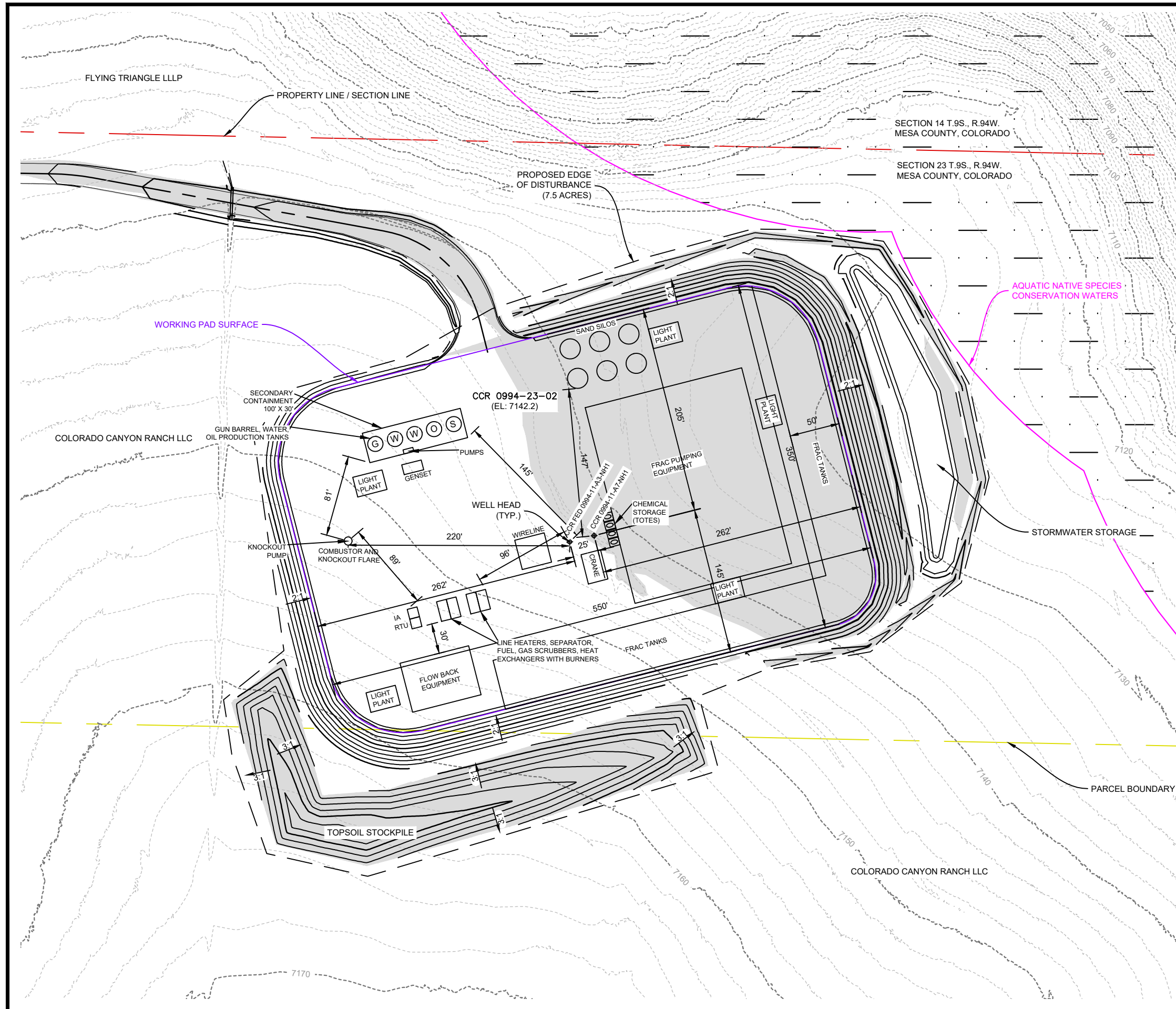
REVISION	
DATE	8/13/24
NO.	1

DRAFTED	JRH
REVIEWED	MJK
PROJECT NUMBER	2307-01465.2
ISSUE DATE	8/15/24

CCR 0994-23-02 WELL PAD DESIGN

LARAMIE ENERGY, LLC
 NWNE OF SECTION 23, T.9S., R.94W., 6TH P.M., MESA COUNTY, CO

COMPLETIONS LAYOUT





INTERIM PAD VOLUME SUMMARY

CUT FACTOR = 1.0
CUT VOLUME = 18,195 CY
FILL FACTOR = 1.0
FILL VOLUME = 17,723 CY
NET = 472 CY (CUT)

INTERIM RECLAIM AREA = 5.2 (ACRES)
ORIGINAL AREA OF DISTURBANCE = 7.5 (ACRES)
PRODUCTION PAD SURFACE = 2.3 (ACRES)

ROAD LENGTH (BRUSH CREEK RD TO INTERIM PAD) = 2,564 FEET
ROAD AREA OF DISTURBANCE = 1.9 ACRES
ROAD RUNNING SURFACE = 1.4 ACRES

LONG-TERM DISTURBANCE = 4.2 ACRES

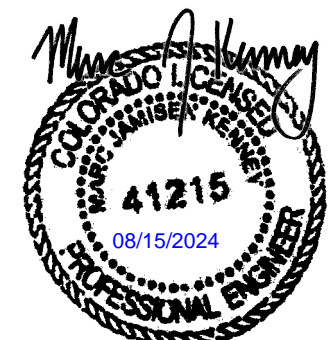
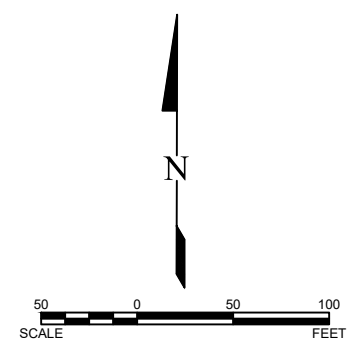
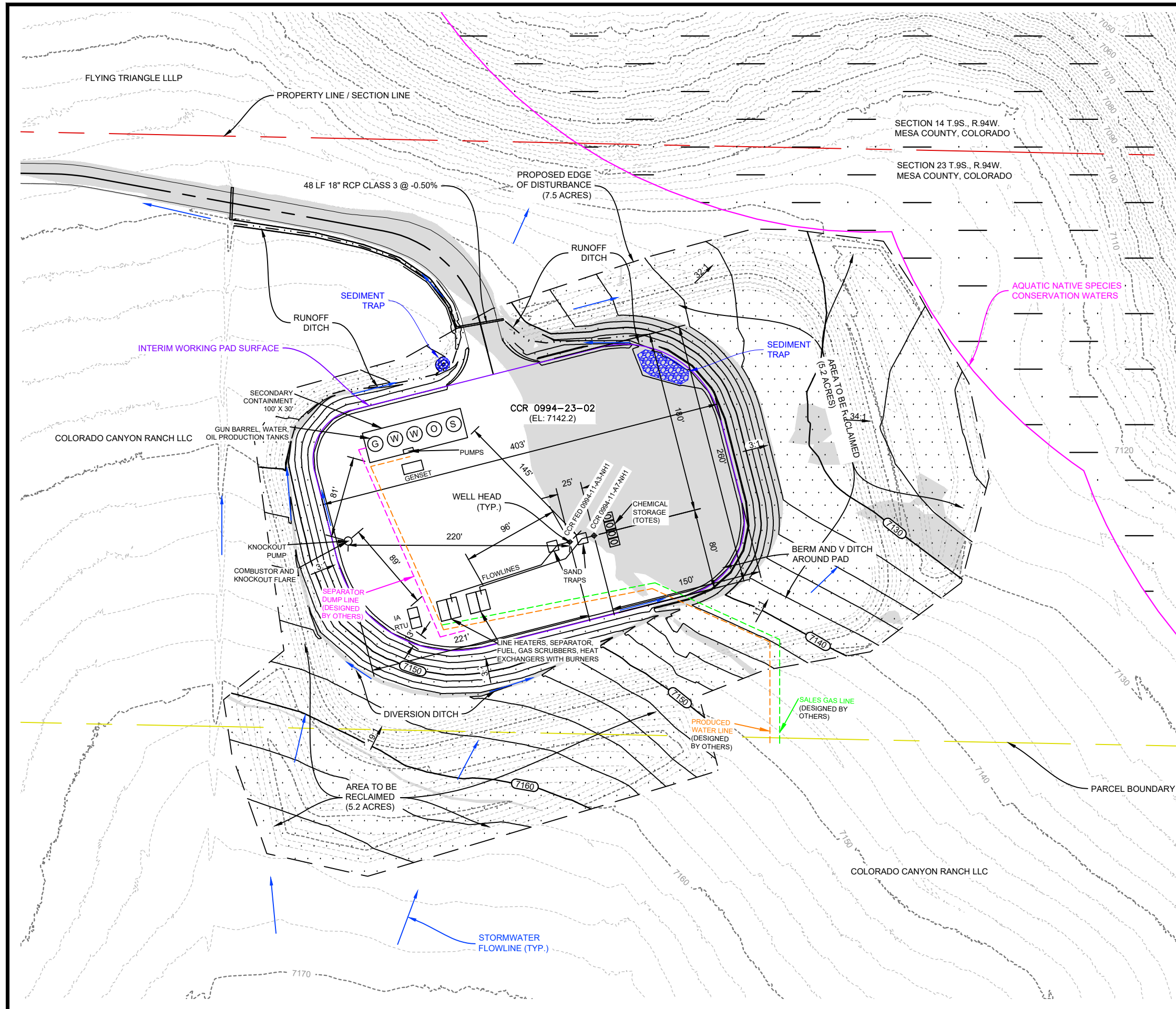
NOTES

1. CONTOUR INTERVAL IS 2 FEET.
2. EXISTING TOPOGRAPHY AND FEATURE DATA WERE COLLECTED BY WASATCH SURVEYING.
3. WELL PAD DIMENSIONS AND EQUIPMENT LAYOUTS PROVIDED BY LARAMIE ENERGY, LLC.

LEGEND	
	REVEGATED AREA
	SEDIMENT TRAP
	FILL
	GUN
	WATER
	OIL
	SAND

NO.	DATE	REVISION
1	8/13/24	REVISED LABELS/COLORS

NO.	DATE	REVISION
		DRAFTED JRH
		REVIEWED MJK
		PROJECT NUMBER 2307-01465.2
		ISSUE DATE 8/15/24



CCR 0994-23-02 WELL PAD DESIGN

LARAMIE ENERGY, LLC
NWNE OF SECTION 23, T.9S., R.94W., 6TH P.M., MESA COUNTY, CO

PRODUCTION LAYOUT

SHEET
9.02



Appendix E

Emergency Action Plan

Laramie Energy, LLC

Emergency Action Plan

Updated: 7/06/2023

Corporate:

Laramie Energy, LLC

1001 Seventeenth St. Suite 1900

Denver, Colorado 80202

Field:

760 Horizon Drive, Suite 101

Grand Junction, Colorado 81506

TABLE OF CONTENTS

Emergency Action Plan	1
PURPOSE	1
OWNERSHIP	2
GENERAL, ON-SITE RESPONSIBILITY	2
DRILLING OPERATIONS, ON-SITE RESPONSIBILITY	3
COMPLETION OPERATIONS, ON-SITE RESPONSIBILITY	3
EMERGENCY PHONE NUMBERS AND CONTACTS (TABLE 1)	4

Emergency Procedures:

FIRE/EXPLOSION	5
HAZARDOUS MATERIALS RELEASE.....	5
VEHICLE ACCIDENT	6
PERSONAL INJURY	6
SUDDEN ILLNESS OR DEATH.....	7

Emergency Action Plan

The management of Laramie Energy is genuinely concerned with the health and welfare of all personnel who enter oil and gas field operations including company employees, customer employees, contractors, contractor's employees, visitors to the premises and the general public. While Laramie Energy engages professional contractors and drilling contractors and relies upon their expertise and their own, published, Emergency and Safety Plans, it is essential for all Laramie Energy personnel and associates to know what to do in the event of an emergency in order to minimize danger.

Purpose

The purpose of this emergency action plan is to provide employees and contractors working at Laramie Energy sites with emergency procedures and phone numbers for local emergency response agencies that should be contacted in the event of an emergency at a Laramie Energy work site. This Emergency Action Plan may be published independently from the Safety Plan as needed.

Requirements (per 29 CFR 1910.38(c))

- Means of reporting fires and other emergencies – Laramie employees must use any means possible to contact emergency services if necessary. Cell phones, company radios, land lines and satellite phones may be used to accomplish this goal. In offices, the manual fire alarm may be pulled. All fires and incidents must be reported to the appropriate supervisor and safety department as soon as possible.
- Evacuation procedures and emergency escape route assignments – written procedures and route assignments are available for larger facilities and offices. In occupied offices, you must close your door as you exit your office. A floor warden will ensure that the office floor is completely evacuated and will be the last employee to vacate the office area. Evacuation of smaller sites, such as well pad locations must be addressed during a project pre-job meeting.
- Procedures for employees who remain to operate critical plant operations before they evacuate – Laramie employees will initiate shutdown procedures per facility in the event of an emergency evacuation. Laramie employees will be expected to evacuate when the signal is given.
- Accounting for all employees after an emergency evacuation has been completed – the supervisor on site (or most senior employee if the supervisor is not present) will be responsible to account for all employees and contractors on site during an evacuation to ensure that everyone has safely evacuated.
- Rescue and medical duties for employees performing them – Employees will be expected to perform rescue and medical duties to the level in which they were trained. Employees will be expected to not perform above their training level.
- Names or job titles of persons who can be contacted:

Ownership

OWNER	RESPONSIBLE PARTY
Laramie Energy, LLC 1001 Seventeenth St. Suite 1900 Denver, Colorado 80202 Office: 303-339-4400 Fax: 303-339-4399	Robert S. Boswell Chairman & Chief Executive Officer Office: 303-339-4401 Cell: 303-517-1774

General, On-Site Responsibility

DENVER OFFICE	RESPONSIBLE PARTY
Denver Emergency	911
Laramie Energy Office	303-339-4400
Building Security	303-293-8388
Property Management	303-293-0100

GRAND JUNCTION OFFICE	RESPONSIBLE PARTY
Laramie Energy, LLC 760 Horizon Drive, Suite 101 Grand Junction, Colorado 81506 Phone: 970-263-3600	Chris Clark Vice President- Field Operations Office: 970-263-3607 Cell: 970-462-8375

NORTH PICEANCE OFFICE - DEBEQUE	RESPONSIBLE PARTY
Laramie Energy, LLC 4321 V 2/10 Rd. DeBeque, Colorado 81630 Phone: 970-263-3655	Luke Cody North Area Production Manager Office: 970-263-3605 Cell: 970-618-2571

SOUTH PICEANCE OFFICE-COLLBRAN	RESPONSIBLE PARTY
Laramie Energy, LLC 6645 64 6/10 Road Collbran, Colorado 81624 Phone: 970-487-0298	Rory Mortensen South Area Production Manager Office: 970-487-3843 Cell: 970-778-5161

Drilling Operations, On-Site Responsibility

DRILLSITE	RESPONSIBLE PARTY
Varies (to be shared during drilling activity)	Aaron Duncan Drilling Manager Office: 303-339-4913 Cell: 406-498-4526

Completion Operations, On-Site Responsibility

COMPLETION SITE	RESPONSIBLE PARTY
Varies (to be shared during completion activity)	Jason Petermen Completions/Production Engineering Manager Office: 970-263-3610 Cell: 970-456-6334

Emergency Phone Numbers and Contacts

This section provides a list of emergency phone numbers that should be used in the event of an emergency at one of Laramie Energy’s field locations. **Please note that the different Laramie Energy field locations have different local emergency response numbers.**

**** All Emergencies should be routed through 911.**

Table 1 – Local Contact Phone Numbers

DeBeque Area		Collbran Area	
CareFlight	1 (800) 332-4923	CareFlight	1 (800) 332-4923
Mesa County Sheriff	970-242-6707	Mesa County Sheriff	970-242-6707
Saint Mary’s Hospital	970-244-2273	Saint Mary’s Hospital	970-244-2273
Grand River Hospital	970-625-6400	Community Hospital	970-242-0920
DeBeque Fire Dept.	970-283-8632	Plateau Valley Fire Dept.	970-268-5283
Non-Emergency	970-242-6707	Non-Emergency	970-242-6707
Colorado State Patrol	970-249-4392	Colorado State Patrol	970-249-4392
Buckhorn Draw Area			
CareFlight	1-800-332-4923		
Rio Blanco County Sheriff	970-878-9625		
Pioneers Medical Center	970-878-5047		
Meeker Fire Dept.	970-878-3443		
Non-Emergency	970-878-9600		
Colorado State Patrol	970-826-1301		

All Denver area emergencies – call 911

EMERGENCY PROCEDURES FOR:

FIRE/EXPLOSION

1. **KEEP CALM!** In your haste to act, you may injure others or yourself.
2. Drilling Supervisor, Completion Supervisor, or Area Production Manager is in charge.
3. Evacuate and follow directions to a safe location.
4. Contact the appropriate local emergency response authorities from Table 1:
5. Follow directives of Sheriff, Ambulance and/or Fire Department personnel upon arrival.
6. Be available to support supervisor's directives, including assisting with fire extinguishing and evacuation of injured personnel if trained and able.
7. Contact Area Production Manager by phone if not already onsite or previously contacted.
8. Contact Chris Clark, Vice President- Field Operations, at 970-462-8375 (cell) if not previously contacted.
9. Contact Robert Boswell, Chief Executive Officer, at 303-517-1774 (cell) if not previously contacted.

HAZARDOUS MATERIALS RELEASE

1. **KEEP CALM!** In your haste to act, you may injure others or yourself.
2. Make sure the area is safe. If a confined area, verify that atmosphere is breathable before entering.
 - Assess the situation:
 - Is anyone injured?
 - What materials were released?
 - Are surface runoff waters impacted?
3. Depending on conditions:
 - If a serious injury or an associated fire:
 - Call appropriate emergency response authorities from Table 1.
 - Relay nature of emergency, location and travel instructions.
 - If drilling or completion rig/materials/personnel are involved, Notify:
 - The Drilling or Completions Supervisor and/or
 - The Area Production Manager
4. If release is manageable, use materials on hand to control and contain the release.
5. Follow procedures in Spill Prevention, Control and Countermeasures Plan.
6. Ensure that all communications notices have been made.

VEHICLE ACCIDENT

1. **KEEP CALM!** In your haste to act, you may injure others or yourself.
2. Make sure the vehicle is secured. Take notice of risk of fire or of shifting loads.
3. Assess the situation:
 - Is anyone hurt?
 - Have any hazardous materials been released?
 - Provide first aid to injured personnel to your training level.
4. Take steps to control traffic in area.
5. Depending on conditions:
 - If a serious injury or associated fire, call appropriate emergency response authorities from Table 1;
 - Identify the nature of the emergency, location and travel instructions.
 - If no injury or minor injury, document information and provide medical attention.
 - If on public roads, call local Sheriff from Table 1.
 - If reasonable, remove damaged vehicle from public thoroughfare.
6. Ensure that all communications notices have been made.

PERSONAL INJURY

1. **KEEP CALM!** In your haste to act, you may injure others or yourself.
2. Make sure the area around injured person is safe. If a confined area, verify that atmosphere is breathable before entering.
3. Assess the condition of the injured.
4. If a serious injury, call the appropriate emergency response authorities from Emergency Notification Chart:
 - Nature of emergency, location and travel instructions.
 - Designate a well-known local site to meet incoming ambulance to guide to site.
 - Use map for surface transportation.
 - In case of major incident; use latitude-longitude or well known, easy-to-recognize landmark for helicopter response.
5. If drilling or completion rig/materials/personnel are involved, Notify:
 - The Drilling or Completion Supervisor and/or
 - The Area Production Manager.
6. Provide first aid to injured personnel to your training ability.
7. Ensure that all required notifications have been made.

SUDDEN ILLNESS OR DEATH

1. KEEP CALM! In your haste to act, you may injure others or yourself.
2. If ill worker is conscious and able to respond:
 - Make sure the area around ill person is safe. If a confined area, verify that atmosphere is breathable before entering.
 - Remove ill worker from harm's way. Protect from extremes of temperature. Assure continued breathing.
 - Inquire as to the nature of the illness, attack or symptoms and available medication if needed.
 - Administer first aid to your training ability.
 - Call appropriate emergency response services from Table 1.
3. If ill worker is unconscious or unable to respond:
 - Make sure the area around ill person is safe. If a confined area, verify that atmosphere is breathable before entering.
 - Remove ill worker from harm's way. Protect from extremes of temperature. Assure continued breathing.
 - Inquire of friends or co-workers as to the nature of the illness, attack or symptoms.
 - Inquire of friends or co-workers as to available medication if needed.
 - Administer first aid to your training ability.
 - Call appropriate emergency response services from Table 1.
4. Notify the Drilling Supervisor, Completions Supervisor, or Area Production Manager.
5. Contact Chris Clark, Vice President – Field Operations, at 970-462-8375 (cell) if not previously contacted.
6. Contact Robert Boswell, Chief Executive Officer, at 303-517-1774 (cell) if not previously contacted.
7. If a hospitalization, fatality, amputation or loss of an eye occurs, the Chief Operating Officer or his/her representative must notify OSHA within 8 hours of such incident.