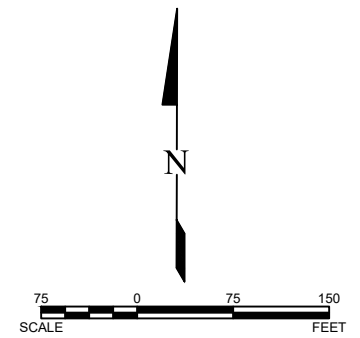
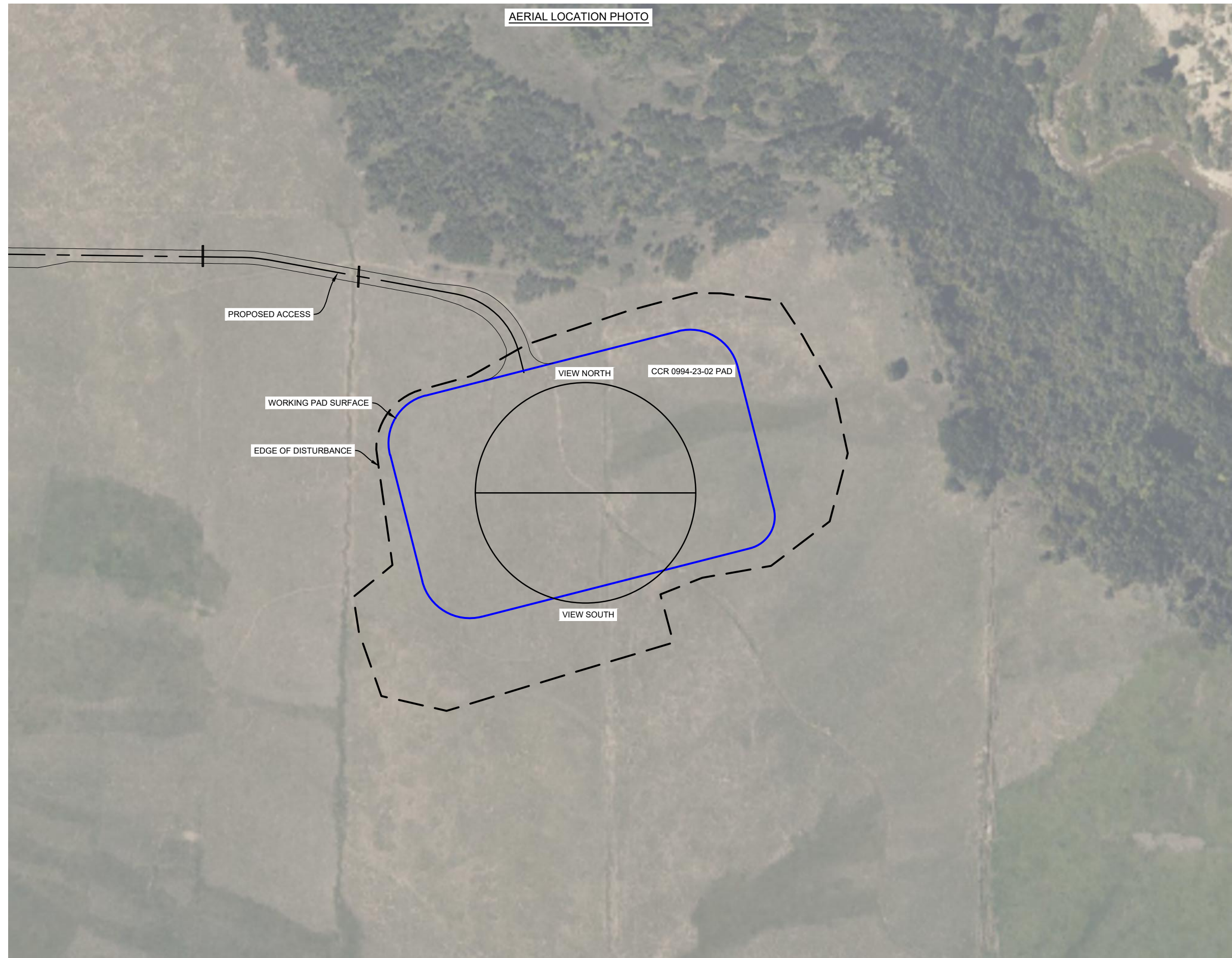


AERIAL LOCATION PHOTO



NO.	DATE	REVISION

DRAFTED
 JRH
 REVIEWED
 WH
 PROJECT NUMBER
 2307-01465.2
 ISSUE DATE
 8/22/24

CCR 0994-23-02 WELL PAD DESIGN
 LARAMIE ENERGY, LLC
 NWNE OF SECTION 23, T.9S., R.94W., 6TH P.M., MESA COUNTY, CO
LOCATION PHOTOS 1 OF 4

PANORAMA LOCATION PHOTOS
 PHOTOGRAPHS TAKEN AUGUST 7, 2024

LOCATION PHOTO LOOKING NORTH
 N

W

E



LOCATION PHOTO LOOKING SOUTH
 S

E

W

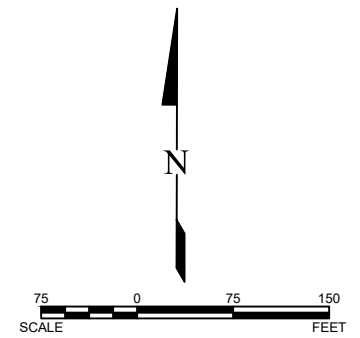
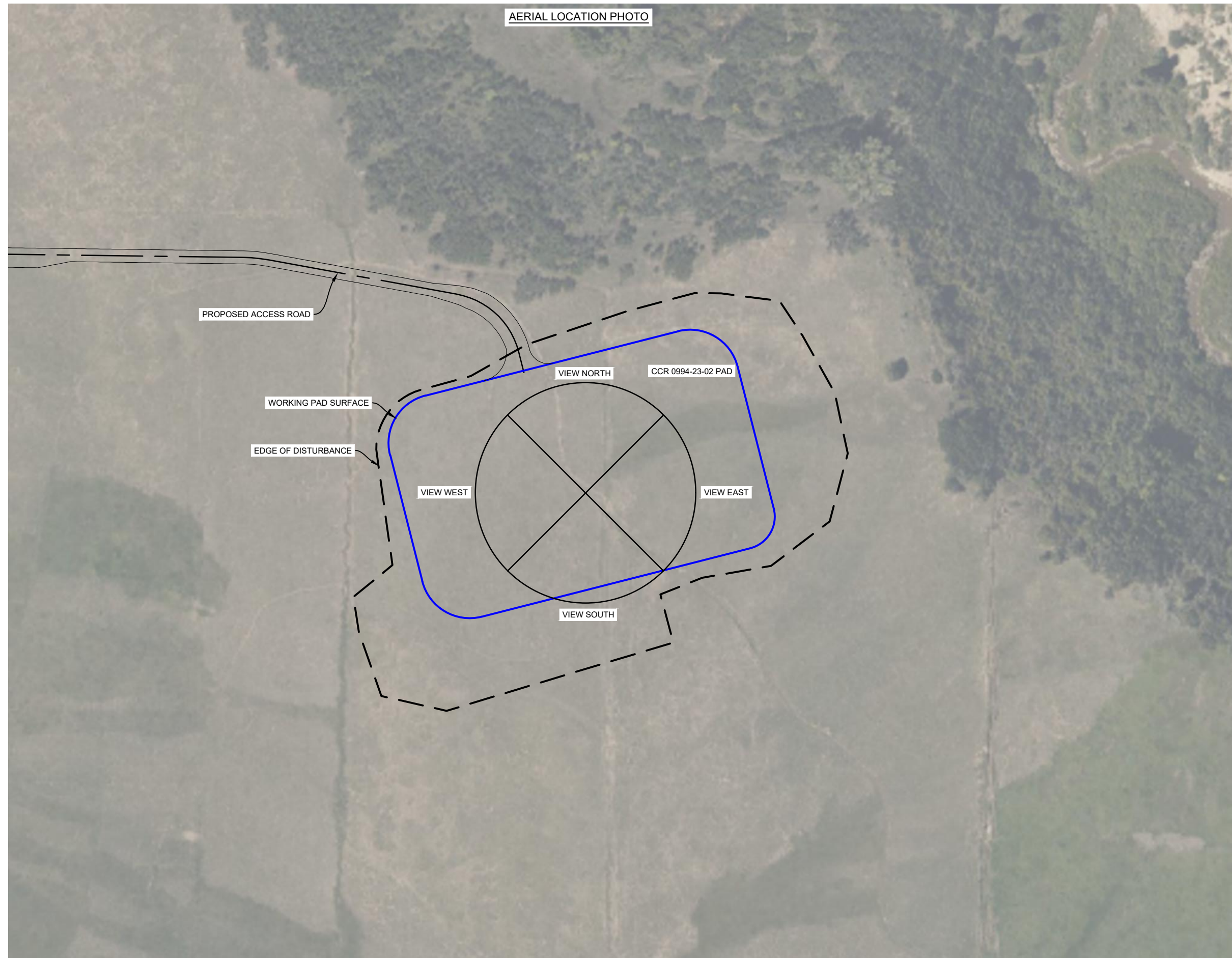


NO.	DATE	REVISION

DRAFTED	JRH
REVIEWED	WH
PROJECT NUMBER	2307-01465.2
ISSUE DATE	8/22/24

CCR 0994-23-02 WELL PAD DESIGN
 LARAMIE ENERGY, LLC
 NWNE OF SECTION 23, T.9S., R.94W., 6TH P.M., MESA COUNTY, CO
 LOCATION PHOTOS 2 OF 4

AERIAL LOCATION PHOTO



NO.	DATE	REVISION
DRAFTED		
JRH		
REVIEWED		
WH		
PROJECT NUMBER		
2307-01465.2		
ISSUE DATE		
8/22/24		

CCR 0994-23-02 WELL PAD DESIGN
 LARAMIE ENERGY, LLC
 NWNE OF SECTION 23, T.9S., R.94W., 6TH P.M., MESA COUNTY, CO

LOCATION PHOTOS 3 OF 4

CARDINAL LOCATION PHOTOS
 PHOTOGRAPHS TAKEN AUGUST 7, 2024



LOCATION PHOTO LOOKING NORTH



LOCATION PHOTO LOOKING SOUTH



LOCATION PHOTO LOOKING WEST



LOCATION PHOTO LOOKING EAST



NO.	DATE	REVISION

DRAFTED	JRH
REVIEWED	WH
PROJECT NUMBER	2307-01465.2
ISSUE DATE	8/22/24

CCR 0994-23-02 WELL PAD DESIGN
 LARAMIE ENERGY, LLC
 NWNE OF SECTION 23, T.9S., R.94W., 6TH P.M., MESA COUNTY, CO