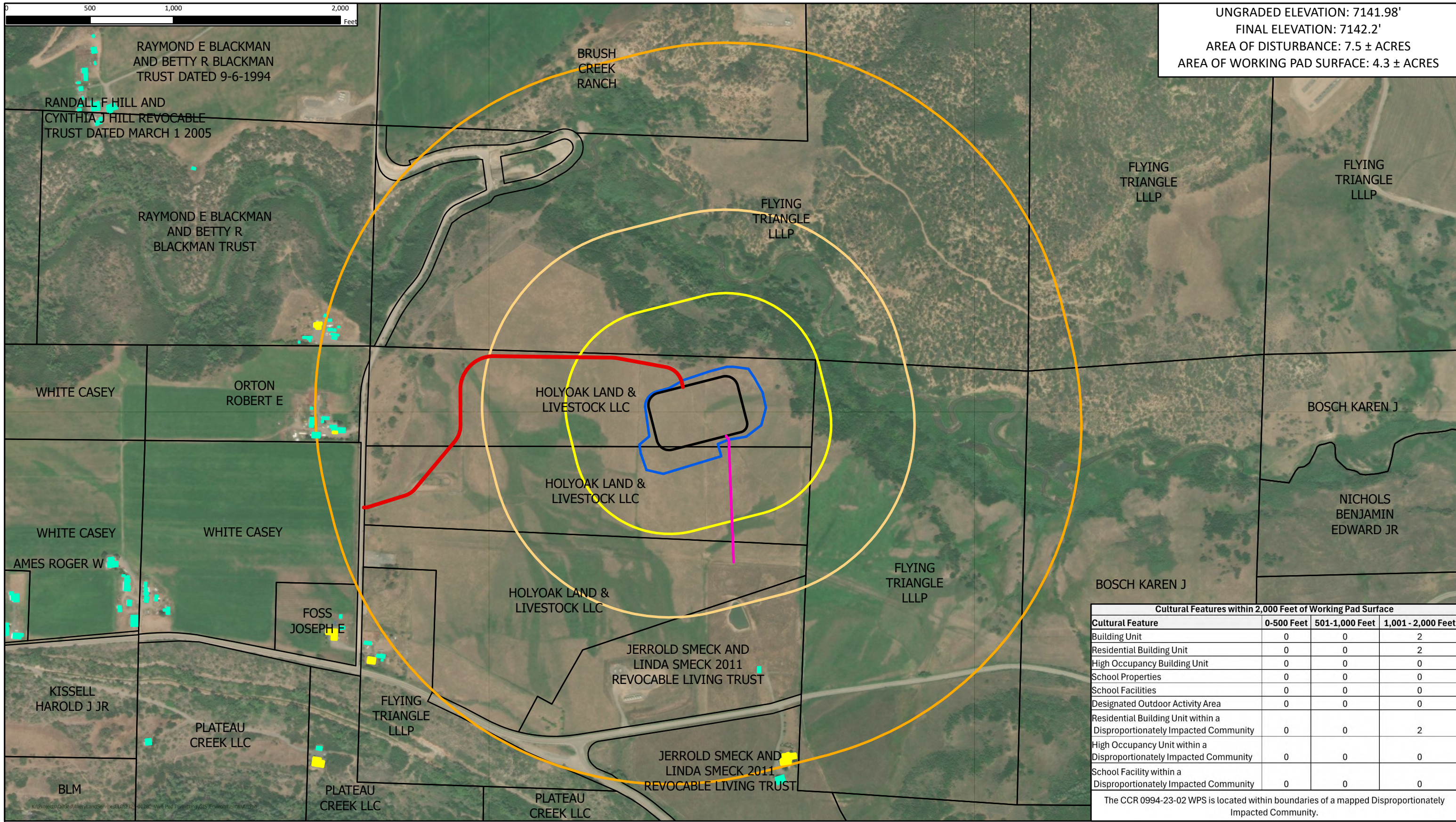
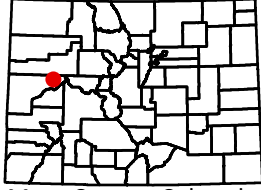


UNGRADED ELEVATION: 7141.98'
 FINAL ELEVATION: 7142.2'
 AREA OF DISTURBANCE: 7.5 ± ACRES
 AREA OF WORKING PAD SURFACE: 4.3 ± ACRES



Cultural Features within 2,000 Feet of Working Pad Surface			
Cultural Feature	0-500 Feet	501-1,000 Feet	1,001 - 2,000 Feet
Building Unit	0	0	2
Residential Building Unit	0	0	2
High Occupancy Building Unit	0	0	0
School Properties	0	0	0
School Facilities	0	0	0
Designated Outdoor Activity Area	0	0	0
Residential Building Unit within a Disproportionately Impacted Community	0	0	2
High Occupancy Unit within a Disproportionately Impacted Community	0	0	0
School Facility within a Disproportionately Impacted Community	0	0	0

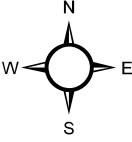
The CCR 0994-23-02 WPS is located within boundaries of a mapped Disproportionately Impacted Community.



Mesa County, Colorado

CCR 0994-23-02 Well Pad
 Laramie Energy, LLC
 Cultural Distances - ECMC Rule 304.b.(3)
 NWNE OF SECTION 23, T.9S., R.94W., 6TH P.M.,
 MESA COUNTY, CO

- Proposed Water and Gas Pipeline
- Area of Disturbance
- Working Pad Surface (WPS)
- Proposed Access Road
- Residential Building Unit
- Buildings
- 500 feet from WPS
- 1000 feet from WPS
- 2000 feet from WPS
- Parcels



KLJ Project Number: 2307-01465.2
 Date Created: 9/3/2024 | Created by: NSO

DISTANCE FROM WORKING PAD SURFACE (WPS) - ECMC RULE 304b(3)A																				
	BUILDING		RESIDENTIAL BUILDING UNIT		HIGH OCCUPANCY BUILDING UNIT		SCHOOL FACILITY		DESIGNATED OUTDOOR ACTIVITY AREA		PUBLIC ROAD		ABOVE GROUND UTILITY		RAILROAD		PROPERTY LINE*		PROPERTY LINE OF DIFFERENT LAND OWNER	
	DIRECTION	LENGTH	DIRECTION	LENGTH	DIRECTION	LENGTH	DIRECTION	LENGTH	DIRECTION	LENGTH	DIRECTION	LENGTH	DIRECTION	LENGTH	DIRECTION	LENGTH	DIRECTION	LENGTH	DIRECTION	LENGTH
WPS	S	1385'	W	1873'	W	>5280'	SW	>5280'	W	>5280'	NW	>1560'	SW	1760'	NW	>5280'	N/A	0	N	111'
DISTANCE FROM WORKING PAD SURFACE - DISPROPORTIONATELY IMPACTED COMMUNITY																				
		RESIDENTIAL BUILDING UNIT		HIGH OCCUPANCY BUILDING UNIT		SCHOOL FACILITY														
		DIRECTION	LENGTH	DIRECTION	LENGTH	DIRECTION	LENGTH	DIRECTION	LENGTH											
WPS		W	1873'	W	>5280'	W	>5280'													

*Colorado Canyon Ranch, LLC owns the properties north and south of the parcel line that crosses the working pad surface.