

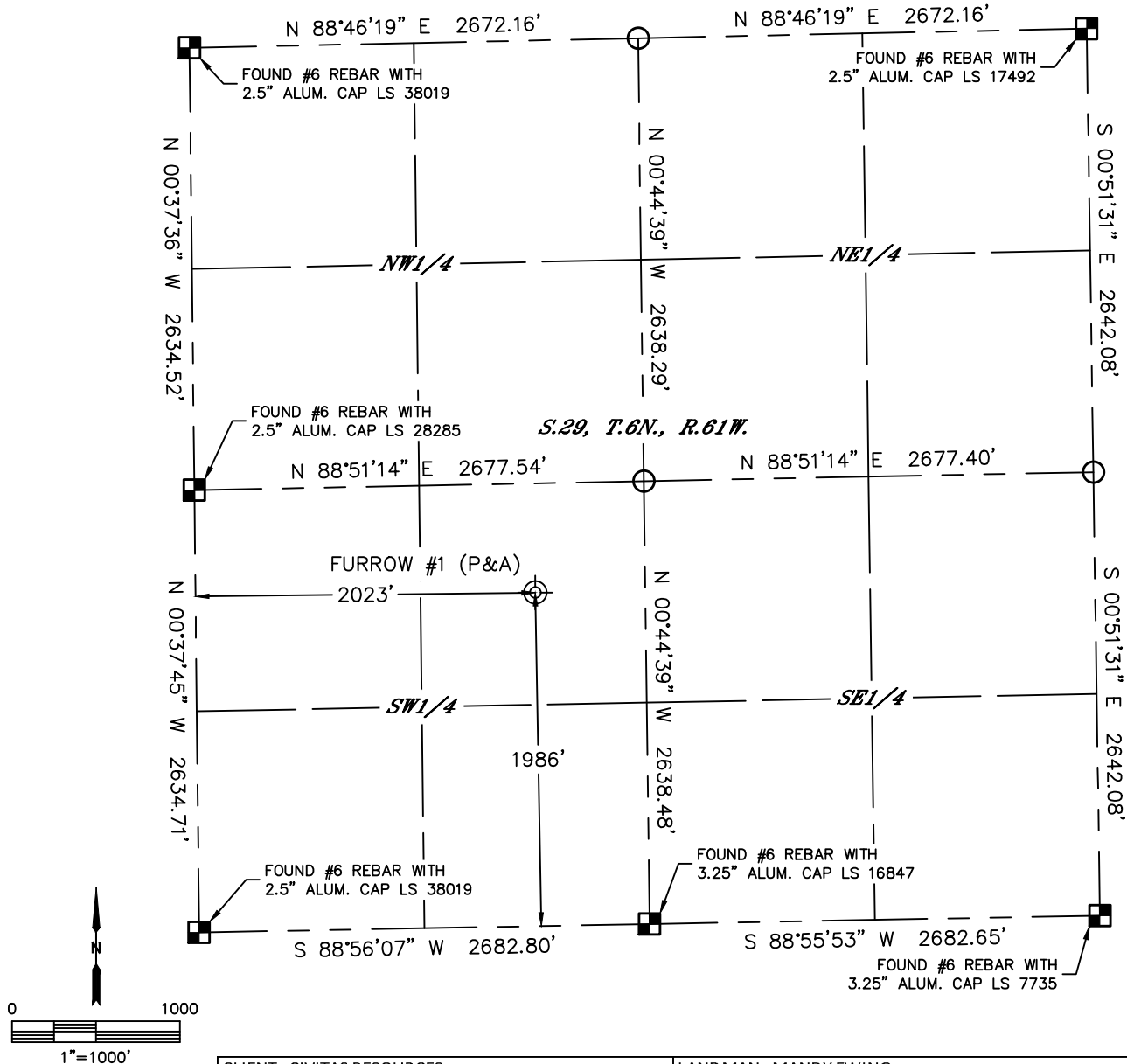


Lat40°, Inc. 6250 W. 10th Street, Unit 2, Greeley, CO 970-515-5294

# PLUGGED AND ABANDONED WELL EXHIBIT

FURROW #1

SECTION: 29  
TOWNSHIP: 6N  
RANGE: 61W  
6TH. P.M.  
WELD COUNTY, CO



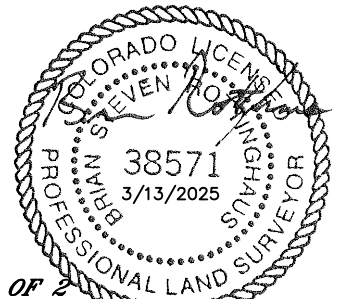
CLIENT: CIVITAS RESOURCES						LANDMAN: MANDY EWING				
INSTRUMENT OPERATOR: DUSTIN SIMON						SURVEY DATE: 3/12/2025			SURFACE USE: CROPLAND	
SHL FOOTAGE			SHL LAT °		SHL LONG °		SHL PDOP	SHL ELEV (FT.)	SHL 1/4/1/4	SHL S-T-R
1986	FSL	2023	FWL	40.45736	-104.23566	1.0		4686	NESW	29-6-61
DESCRIPTION: FOUND STRONG METAL DETECTOR RING AT NOTED POSITION.										

## LEGEND

- = ALIQUOT MONUMENT AS DESCRIBED
- = CALCULATED POSITION
- ⊙ = ABANDONED WELL

## NOTE:

- 1) Bearings shown are Grid Bearings of the Colorado State Plane Coordinate System, North Zone, North American Datum 1983. The lineal dimensions as contained herein are based upon the "U.S. Survey Foot."
- 2) Distances to section lines measured at 90 degrees from said section lines.
- 3) Ground elevations are based on an observed GPS elevation (NAVD 1988 DATUM).
- 4) Latitude and Longitude shown are (NAD 83 DATUM).
- 5) Sectional data as shown hereon is from previous surveys and was not verified for this P&A Exhibit.
- 6) This map does not represent a boundary survey.



SHEET 1 OF 2

Brian S. Rottinghaus—On behalf of Lat40°, Inc.  
Colorado Licensed Professional Land Surveyor No. 38571  
DATE: 3/13/2025  
PROJECT#: 2025077



Lat40°, Inc. 6250 W. 10th Street, Unit 2, Greeley, CO 970-515-5294

## PLUGGED AND ABANDONED WELL EXHIBIT

**FURROW #1**

SECTION: 29  
TOWNSHIP: 6N  
RANGE: 61W  
6TH. P.M.  
WELD COUNTY, CO  
DATE: 3/12/2025



VIEW NORTH



VIEW WEST



VIEW EAST



VIEW SOUTH