



SITE NAME: WIEDEMAN 4-5 FL							DATE: 5/10/2024	REM. PROJECT #: 33975	WEATHER: 50S CLOUDY	
SITE DIRECTIONS:							CLIENT: Noble			
LEGALS AND LAT/LONG: 40.434112, -104.806975							TASMAN PERSONNEL: RY, LM			
SOIL TYPES: SW - Well Graded Sand							SURFACE GRADIENT:			
SOIL SAMPLING							FACILITY INFRASTRUCTURE			
Date/Time	Soil Sample ID	PID (ppm)	Visual	Olfactory	Photo?	Grab or Lab Sample?	EQUIPMENT		Quantity	
							Above Ground Storage Tank (AST)			
5/10/2024 14:00	FL01R-W@3'	0.0	No Staining	No Odor	Yes	Lab	Buried or Partially Buried Vessel			
							Separator			
							Emission Control Device (ECD)			
							Dump Line			
							Wellhead			
							Flowline			
							Other:			
							Soil Loads Removed			
							IMPACTED SOIL IDENTIFIED?			
							ESTIMATED VOLUME OF IMPACTS:			
							Date	Number	CY	
							Total Removed	0	0	
							Disposal Facility:			
							Groundwater Recovery			
							DATE GW ENCOUNTERED:		DEPTH:	
							GROUNDWATER IN CONTACT WITH IMPACTED SOIL?			
							LNAPL OR SHEEN OBSERVED ON GW?			
GROUNDWATER SAMPLING							Date	BBLs		
Date/Time	Groundwater Sample ID	Depth Collected	Turbid?	Sheen?	Odor?	Photo?				
							Total Removed	0		
							Disposal Facility:			

Photographic Log


Equipment ID: FL01R-W		Equipment Type:		Equipment ID:		Equipment Type:	
Material:	Volume:	Contents:		Material:	Volume:	Contents:	
Notes/Conditions:				Notes/Conditions:			



CLIENT: Noble		SITE NAME: Wiedeman 4-5					DATE: 1/30/2025	REM. PROJECT #: 33975	WEATHER: 40s, cloudy	
SITE DIRECTIONS: 83rd Ave/W 4th St, turn E 0.1 mi, then turn N into							JOB#:			
LEGALS AND LAT/LONG: 40.434104, -104.806967							TASMAN PERSONNEL: MD			
SOIL TYPES:							SURFACE GRADIENT:			
SOIL SAMPLING							FACILITY INFRASTRUCTURE			
Date/Time	Soil Sample ID	PID (ppm)	Visual	Olfactory	Photo?	Grab or Lab Sample?	EQUIPMENT		Quantity	
							Above Ground Storage Tank (AST)			
01-31-2025 11:35	FL01-01@4'	0.7	No Staining	No Odor	Yes	Lab	Buried or Partially Buried Vessel			
							Separator			
							Emission Control Device (ECD)			
							Dump Line			
							Wellhead			
							Flowline		6	
01-30-2025 14:25	FL02R-W@4'	1.1	No Staining	No Odor	Yes	Lab	Other:			
01-31-2025 11:20	FL02-01@4'	0.9	No Staining	No Odor	Yes	Lab	Soil Loads Removed			
							IMPACTED SOIL IDENTIFIED?			
							ESTIMATED VOLUME OF IMPACTS:			
							Date	Number	CY	
01-30-2025 14:30	FL03R-W@4'	0.9	No Staining	No Odor	Yes	Lab				
01-31-2025 11:15	FL03-01@4'	1.5	No Staining	No Odor	Yes	Lab				
							Total Removed		0 0	
							Disposal Facility:			
							Groundwater Recovery			
01-30-2025 14:35	FL04R-W@4'	1.4	No Staining	No Odor	Yes	Lab	DATE GW ENCOUNTERED:		DEPTH:	
01-31-2025 11:10	FL04-01@4'	2.1	No Staining	No Odor	Yes	Lab	GROUNDWATER IN CONTACT WITH IMPACTED SOIL?			
							LNAPL OR SHEEN OBSERVED ON GW?			
GROUNDWATER SAMPLING							Date	BBLs		
Date/Time	Groundwater Sample ID	Depth Collected	Turbid?	Sheen?	Odor?	Photo?				
1/30/2025 15:10	GW01	4'	Medium Turbid	None	None	Yes				
							Total Removed		0	
							Disposal Facility:			

Chevron Rockies Business Unit

Field Qualitative Criteria for ECMC Reporting Associated with the Discovery of Potentially Impacted Material

If answered **Yes** to any of the questions listed below, this may suggest the presence of potentially impacted materials as outlined in ECMC Rule 912. Out of an abundance of caution, a “Yes” response will be reported to the ECMC within 24 hours after discovery, regardless of laboratory results. **Immediately notify the RBU Remediation Team.** Include a copy of this Field Qualitative Spill Criteria Checklist in the field Report.

Please answer the following questions when on-site:

1. Is there visible petroleum hydrocarbon staining in the soil? No_____
2. Does the soil sample from the stained area have a petroleum odor? No_____
3. Is there a petroleum hydrocarbon sheen on the nearby surface water? No_____
4. Does there appear to be a sheen of the surface of accumulated groundwater or seeps within the excavation indicative of petroleum? No_____
5. Is stained soil in contact with groundwater? No_____

Please Include relevant photos of the site conditions for items 1-5.

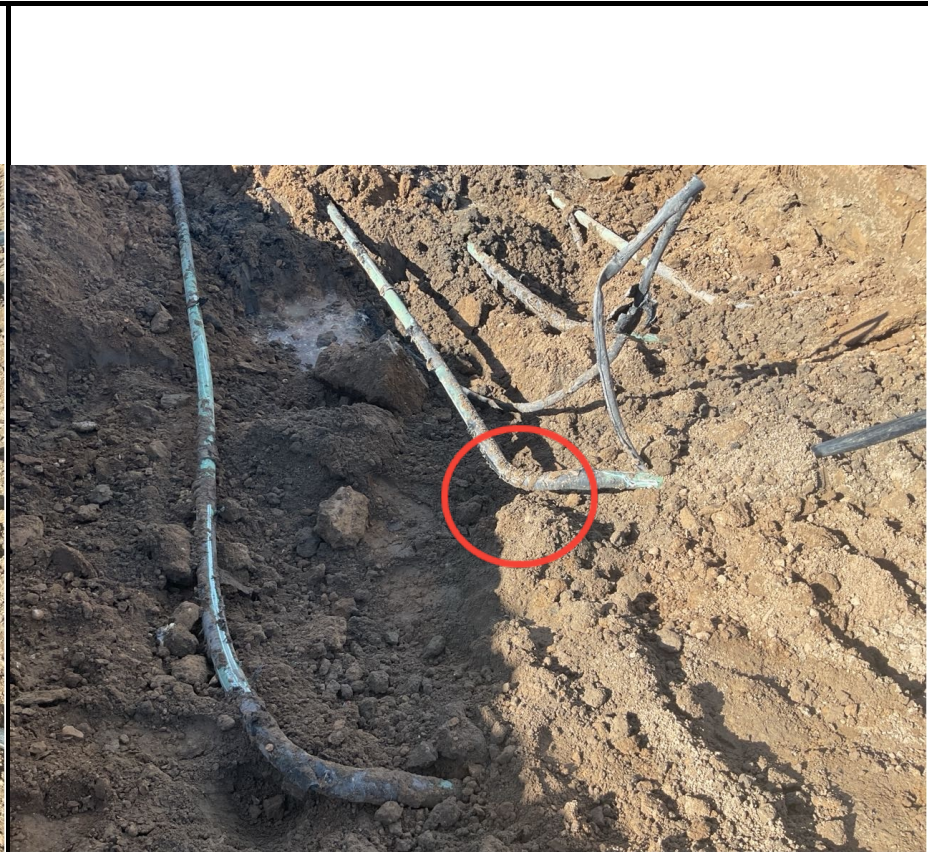
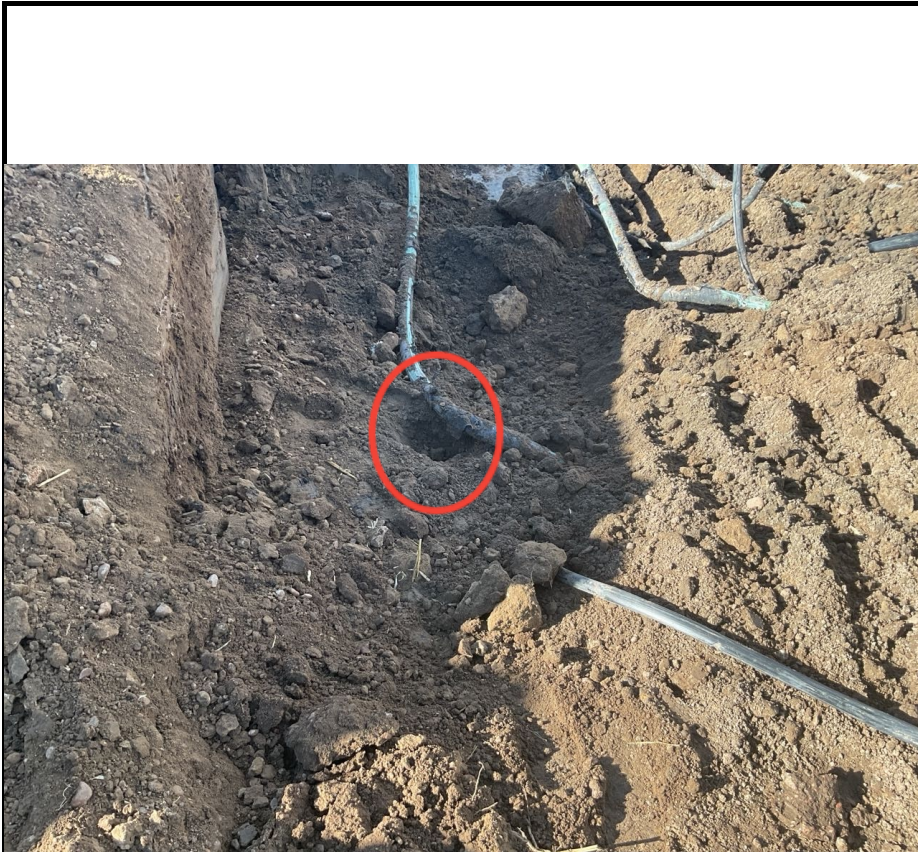
Location name: Wiedeman 4-5_____

Please Circle Facility Type: Flowline_____

					
Equipment ID: FL02R-W@4'		Equipment Type:	Equipment ID: FL03R-W@4'		Equipment Type:
Material:	Volume:	Contents:	Material:	Volume:	Contents:
Notes/Conditions:			Notes/Conditions:		

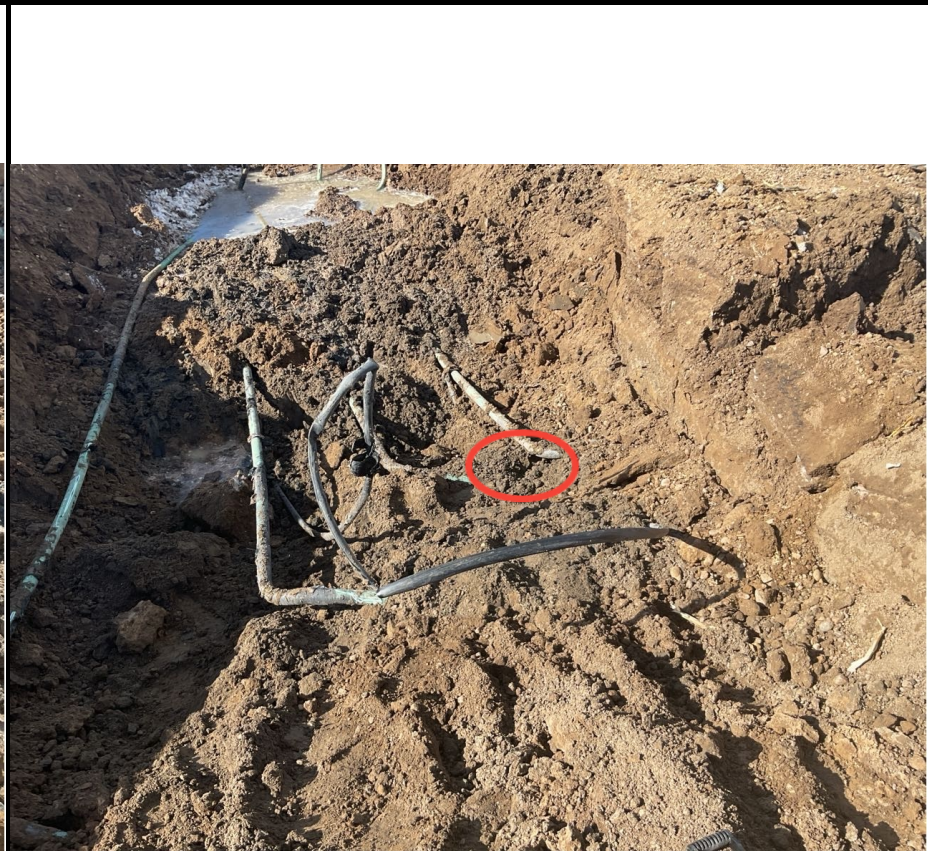
					
Equipment ID: FL04R-W@4'		Equipment Type:	Equipment ID: FL05R-W@4'		Equipment Type:
Material:	Volume:	Contents:	Material:	Volume:	Contents:
Notes/Conditions:			Notes/Conditions:		

					
Material:	Volume:	Contents:	Material:	Volume:	Contents:
Notes/Conditions:			Notes/Conditions:		



Equipment ID: FL06-01 @4'		Equipment Type:	
Material:	Volume:	Contents:	
Notes/Conditions:			

Equipment ID: FL05-01 @4'		Equipment Type:	
Material:	Volume:	Contents:	
Notes/Conditions:			



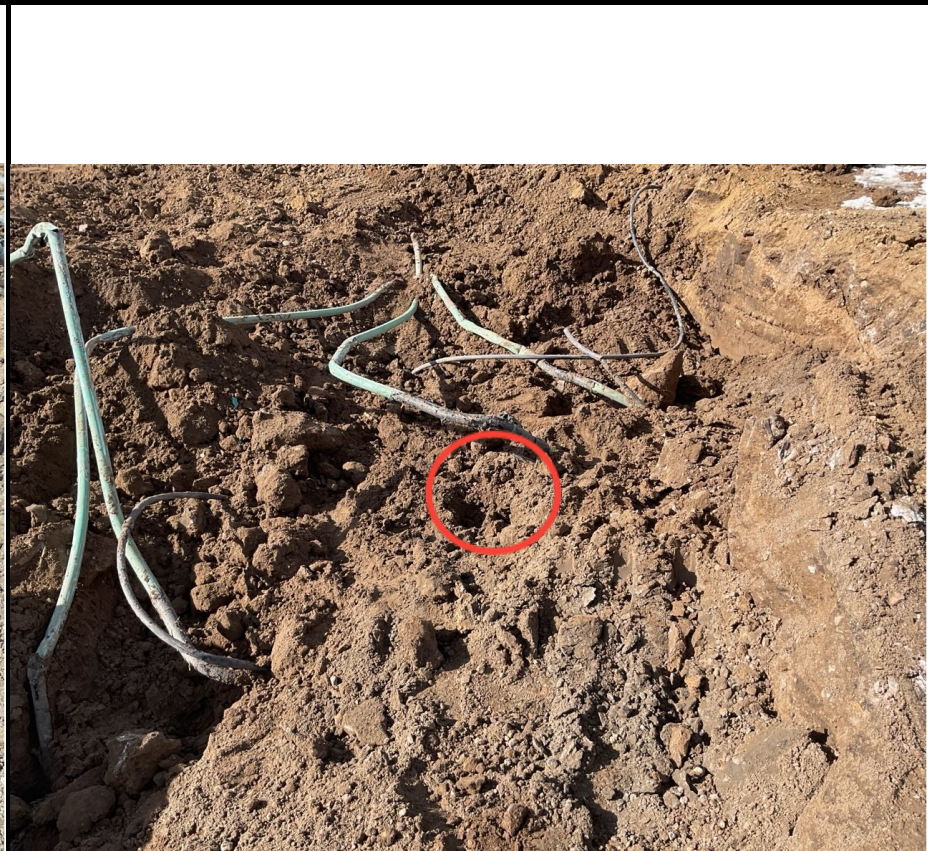
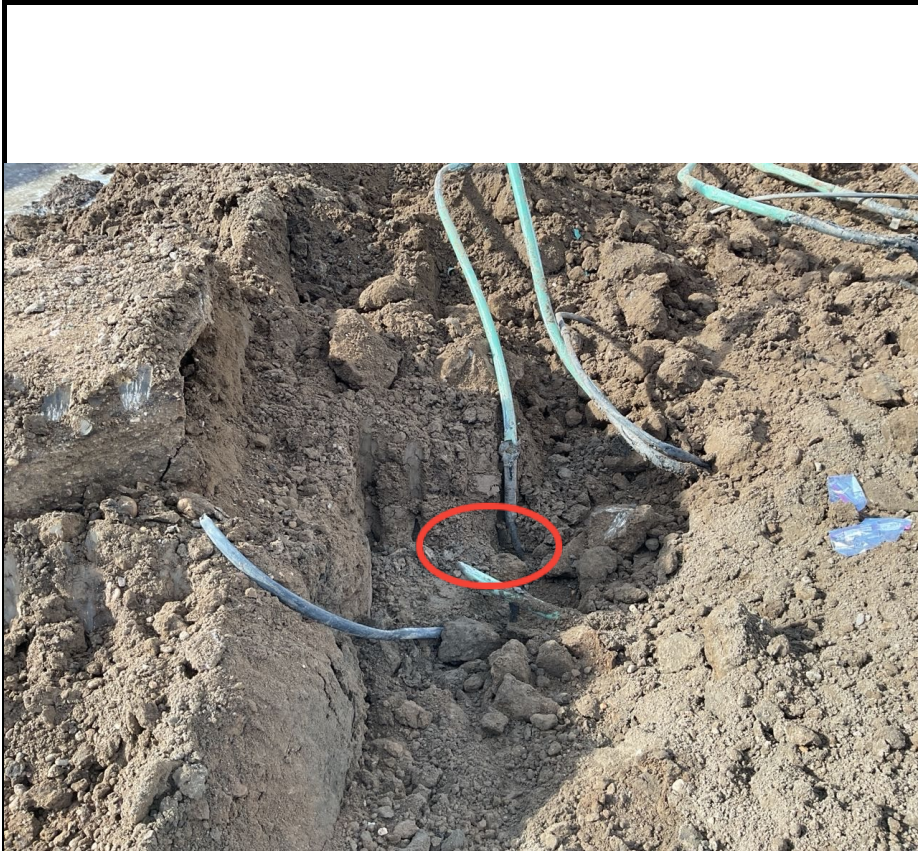
Equipment ID: FL04-01 @ 4'		Equipment Type:	
Material:	Volume:	Contents:	
Notes/Conditions:			

Equipment ID: FL03-01 @ 4'		Equipment Type:	
Material:	Volume:	Contents:	
Notes/Conditions:			



Equipment ID:		Equipment Type:	
Material:	Volume:	Contents:	
Notes/Conditions: SEPERATOR RISERS FOR FL03-FL06. FI 03 is far right, fl06 is far left			

Equipment ID:		Equipment Type:	
Material:	Volume:	Contents:	
Notes/Conditions: SEPERATOR risers for fl02, wiedeman 3-5, 4-5, and 29-5. Single GPS point was taken for these due to hammer junction			



Equipment ID: FL02-01 @4'		Equipment Type:	
Material:	Volume:	Contents:	
Notes/Conditions:			

Equipment ID: FL01-01 @4'		Equipment Type:	
Material:	Volume:	Contents:	
Notes/Conditions: WIEDEMAN 4-5 LINE			

TABLE 1
FIELD DATA SUMMARY TABLE
NOBLE ENERGY, INC. - 100322
WIEDEMAN 4-5, WELD COUNTY, COLORADO
REM # 33975

Sample ID	Sample Date	Depth (ft. bgs)	GPS Data Latitude/Longitude		PDOP Value	VOC Concentration (ppm)
FL01R-W@3'	5/10/2024	3	40.434097	-104.806971	0.9	0.0
FL01-01@4'	1/31/2024	4	40.433432	-104.807061	0.8	0.7
FL02R-W@4 ⁴	1/30/2025	4	40.434011	-104.806933	0.8	1.1
FL02-01@4 ⁴	1/31/2025	4	40.433416	-104.807043	0.8	0.9
FL03R-W@4 ⁵	1/30/2025	4	40.433969	-104.806920	0.8	0.9
FL03-01@4 ⁵	1/31/2025	4	40.433379	-104.807027	0.8	1.5
FL04R-W@4 ⁶	1/30/2025	4	40.433922	-104.806903	0.9	1.4
FL04-01@4 ⁶	1/31/2025	4	40.433372	-104.807024	0.8	2.1
FL05R-W@4 ⁷	1/30/2025	4	40.433887	-104.806884	0.9	0.9
FL05-01@4 ⁷	1/31/2025	4	40.433368	-104.807011	0.8	3
FL06R-W@4 ⁸	1/30/2025	4	40.433851	-104.806868	1.0	0.4
FL06-01@4 ⁸	1/31/2025	4	40.433362	-104.806997	0.8	1.6
BKG01@3 ³	5/10/2024	3	40.433958	-104.806844	0.8	0.0

1. Global Positioning System (GPS) data is provided in decimal degrees using North American Datum (NAD) 83 UTMZone 13 North.

2. Volatile organic compound (VOC) concentrations are measured in the field using a photoionization detector (PID).

PDOP = Position Dilution of Precision

ppm = Parts per million

ft. = Feet

bgs = Below ground surface

3 = Sample collected by Tasman, Inc. as part of the associated Wiedeman 3-5 Flowline decommissioning (Rem #33977).

4 = Sample collected for Wiedeman 5-5 WH

6 = Sample collected for Wiedeman 18-15 WH

8 = Sample collected for Wiedeman 6-5 WH

5 = Sample collected for Wiedeman 25-5 WH

7 = Sample collected for Wiedeman 22-5 WH

TABLE 2
SUMMARY OF VOLATILE ORGANIC SOIL CHEMISTRY DATA
NOBLE ENERGY, INC. - 100322
WIEDEMAN 4-5, WELD COUNTY, COLORADO
REM # 33975

Sample ID	Sample Date	Depth (ft. bgs)	Benzene (mg/kg)	Toluene (mg/kg)	Ethyl-Benzene (mg/kg)	Xylenes (mg/kg)	1,2,4-Trimethyl-Benzene (mg/kg)	1,3,5-Trimethyl-Benzene (mg/kg)	Naphthalene (mg/kg)	TPH (mg/kg)	TPH GRO (mg/kg)	TPH DRO (mg/kg)	TPH ORO (mg/kg)
ECMC Table 915-1 Limits (Residential SSL)			1.2	490	5.8	58	30	27	2	500	500**		
ECMC Table 915-1 Limits (Protection of Groundwater SSL)			0.0026	0.69	0.78	9.9	0.0081	0.0087	0.0038	500	500**		
FL01R-W@3'	5/10/2024	3	<0.0020	<0.0050	<0.0050	<0.010	<0.0050	<0.0050	<0.0038	<50	<0.50	<50	<50
FL01-01@4'	1/31/2024	4	RP	RP	RP	RP	RP	RP	RP	RP	RP	RP	RP
FL02R-W@4' ⁴	1/30/2025	4	<0.0020	<0.0050	<0.0050	<0.010	<0.0050	<0.0050	<0.0038	<50	<0.51	<50	<50
FL02-01@4' ⁴	1/31/2025	4	RP	RP	RP	RP	RP	RP	RP	RP	RP	RP	RP
FL03R-W@4' ⁵	1/30/2025	4	<0.0020	<0.0050	<0.0050	<0.010	<0.0050	<0.0050	<0.0038	<50	<0.52	<50	<50
FL03-01@4' ⁵	1/31/2025	4	RP	RP	RP	RP	RP	RP	RP	RP	RP	RP	RP
FL04R-W@4' ⁶	1/30/2025	4	<0.0020	<0.0050	<0.0050	<0.010	<0.0050	<0.0050	<0.0038	640	<0.50	360	280
FL04-01@4' ⁶	1/31/2025	4	RP	RP	RP	RP	RP	RP	RP	RP	RP	RP	RP
FL05R-W@4' ⁷	1/30/2025	4	<0.0020	<0.0050	<0.0050	<0.010	<0.0050	<0.0050	<0.0038	<50	<0.50	<50	<50
FL05-01@4' ⁷	1/31/2025	4	RP	RP	RP	RP	RP	RP	RP	RP	RP	RP	RP
FL06R-W@4' ⁸	1/30/2025	4	<0.0020	<0.0050	<0.0050	<0.010	<0.0050	<0.0050	<0.0038	<50	<0.50	<50	<50
FL06-01@4' ⁸	1/31/2025	4	RP	RP	RP	RP	RP	RP	RP	RP	RP	RP	RP

1. Bold values exceed the ECMC Table 915-1 limit(s)

2. Red & blue highlighted soil analytical values indicate an exceedance of the referenced soil screening level (SSL)

3. ** Summation of GRO+DRO+ORO must be less than 500 mg/kg

(<) = Analytical result is less than the indicated laboratory reporting limit.

TPH-GRO = Total petroleum hydrocarbons - gasoline range organics

TPH-DRO = Total petroleum hydrocarbons - diesel range organics

TPH-ORO = Total petroleum hydrocarbons - oil range organics

mg/kg = Milligrams per kilogram

ft. = Feet

bgs = Below ground surface 4 = Sample collected for Wiedeman 5-5 WH

6 = Sample collected for Wiedeman 6-5 WH

NA - Not analyzed

5 = Sample collected for Wiedeman 25-5 WH

7 = Sample collected for Wiedeman 22-5 WH

TABLE 3
SUMMARY OF POLYCYCLIC AROMATIC HYDROCARBON SOIL CHEMISTRY DATA
NOBLE ENERGY, INC. - 100322
WIEDEMAN 4-5, WELD COUNTY, COLORADO
REM # 33975

Sample ID	Sample Date	Depth (ft. bgs)	Acenaphthene (mg/kg)	Anthracene (mg/kg)	Benzo (a) Anthracene (mg/kg)	Benzo (a) Pyrene (mg/kg)	Benzo (b) Fluoranthene (mg/kg)	Benzo (k) Fluoranthene (mg/kg)	Chrysene (mg/kg)	Dibenzo (a,h) Anthracene (mg/kg)	Fluoranthene (mg/kg)	Fluorene (mg/kg)	Indeno (1,2,3-cd) Pyrene (mg/kg)	Pyrene (mg/kg)	1-Methyl - Naphthalene (mg/kg)	2-Methyl- Naphthalene (mg/kg)
ECMC Table 915-1 Limits (Residential SSL)			360	1800	1.1	0.11	1.1	11	110	0.11	240	240	1.1	180	18	24
ECMC Table 915-1 Limits (Protection of Groundwater SSL)			0.55	5.8	0.011	0.24	0.3	2.9	9	0.096	8.9	0.54	0.98	1.3	0.006	0.019
FL01R-W@3'	5/10/2024	3	<0.00500	<0.00500	<0.00500	<0.00500	<0.00500	<0.00500	<0.00500	<0.00500	<0.00500	<0.00500	<0.00500	<0.00500	<0.00500	<0.00500
FL01-01@4'	1/31/2024	4	RP	RP	RP	RP	RP	RP	RP	RP	RP	RP	RP	RP	RP	RP
FL02R-W@4 ⁴	1/30/2025	4	<0.00500	<0.00500	<0.00500	<0.00500	<0.00500	<0.00500	<0.00500	<0.00500	<0.00500	<0.00500	<0.00500	<0.00500	<0.00500	<0.00500
FL02-01@4 ⁴	1/31/2025	4	RP	RP	RP	RP	RP	RP	RP	RP	RP	RP	RP	RP	RP	RP
FL03R-W@4 ⁵	1/30/2025	4	<0.00500	<0.00500	<0.00500	<0.00500	<0.00500	<0.00500	<0.00500	<0.00500	<0.00500	<0.00500	<0.00500	<0.00500	<0.00500	<0.00500
FL03-01@4 ⁵	1/31/2025	4	RP	RP	RP	RP	RP	RP	RP	RP	RP	RP	RP	RP	RP	RP
FL04R-W@4 ⁶	1/30/2025	4	<0.00500	<0.00500	<0.00500	<0.00500	<0.00500	<0.00500	<0.00500	<0.00500	<0.00500	<0.00500	<0.00500	<0.00500	<0.00500	<0.00500
FL04-01@4 ⁶	1/31/2025	4	RP	RP	RP	RP	RP	RP	RP	RP	RP	RP	RP	RP	RP	RP
FL05R-W@4 ⁷	1/30/2025	4	<0.00500	<0.00500	<0.00500	<0.00500	<0.00500	<0.00500	<0.00500	<0.00500	<0.00500	<0.00500	<0.00500	<0.00500	<0.00500	<0.00500
FL05-01@4 ⁷	1/31/2025	4	RP	RP	RP	RP	RP	RP	RP	RP	RP	RP	RP	RP	RP	RP
FL06R-W@4 ⁸	1/30/2025	4	<0.00500	<0.00500	<0.00500	<0.00500	<0.00500	<0.00500	<0.00500	<0.00500	<0.00500	<0.00500	<0.00500	<0.00500	<0.00500	<0.00500
FL06-01@4 ⁸	1/31/2025	4	RP	RP	RP	RP	RP	RP	RP	RP	RP	RP	RP	RP	RP	RP

1. Bold values exceed the ECMC Table 915-1 limit(s)
 2. Red & blue highlighted soil analytical values indicate an exceedance of the referenced soil screening level (SSL)
 3. * Indicates laboratory minimum detection limit in excess of SSL
 4. ** Summation of GRO+DRO+ORO must be less than 500 mg/kg
 TPH-GRO = Total petroleum hydrocarbons - gasoline range organics
 TPH-DRO = Total petroleum hydrocarbons - diesel range organics
 TPH-ORO = Total petroleum hydrocarbons - oil range organics
 (-) = Analytical result is less than the indicated laboratory reporting limit.
 mg/kg = Milligrams per kilogram
 ft. = Feet
 bgs = Below ground surface
 NA - Not analyzed
- RP = Results Pending
 4 = Sample collected for Wiedeman 5-5 6 = Sample collected for Wiede 8 = Sample collected for Wiedeman 6-5 WH
 5 = Sample collected for Wiedeman 25-5 7 = Sample collected for Wiedeman 22-5 WH

TABLE 4
SUMMARY OF SOIL SUITABILITY FOR RECLAMATION
NOBLE ENERGY, INC. - 100322
WIEDEMAN 4-5, WELD COUNTY, COLORADO
REM # 33975

Sample ID	Sample Date	Depth (ft. bgs)	pH (Standard Units)	EC (mmhos/cm)	SAR (Standard Units)	Boron (mg/L)
ECMC Table 915-1 Soil Suitability Limits			6 - 8.3	<4	<6	2
FL01R-W@3'	5/10/2024	3	8.42	0.435	0.901	<2.00
FL01-01@4'	1/31/2024	4	RP	RP	RP	RP
FL02R-W@4 ⁴	1/30/2025	4	9.02	0.307	0.739	<2.00
FL02-01@4 ⁴	1/31/2025	4	RP	RP	RP	RP
FL03R-W@4 ⁵	1/30/2025	4	8.54	0.278	0.644	<2.00
FL03-01@4 ⁵	1/31/2025	4	RP	RP	RP	RP
FL04R-W@4 ⁶	1/30/2025	4	8.54	0.349	0.655	<2.00
FL04-01@4 ⁶	1/31/2025	4	RP	RP	RP	RP
FL05R-W@4 ⁷	1/30/2025	4	8.20	0.538	1.14	<2.00
FL05-01@4 ⁷	1/31/2025	4	RP	RP	RP	RP
FL06R-W@4 ⁸	1/30/2025	4	8.84	0.191	0.936	<2.00
FL06-01@4 ⁸	1/31/2025	4	RP	RP	RP	RP
BKG01@3 ⁹	5/10/2024	3	8.04	0.472	1.02	NA
Maximum Background Concentration			8.04	0.472	1.02	NA

1. **Bold** faced values exceed the ECMC Table 915-1 limit(s), but are within background concentrations.

2. **Bold** faced values exceed the ECMC Table 915-1 limit(s) and native background concentrations.

3. **Brown highlighted** soil analytical values indicate a regulatory exceedance.

mg/L = Milligrams per liter

ft. = Feet

bgs = Below ground surface

mmhos/cm = Millimohs per centimeter

NA - Not analyzed

4 = Sample collected for Wiedeman 5-5 WH

5 = Sample collected for Wiedeman 25-5 WH

6 = Sample collected for Wiedeman 18-15 WH

7 = Sample collected for Wiedeman 22-5 WH

8 = Sample collected for Wiedeman 6-5 WH

9 = Sample collected as part of the associated Wiedeman 3-5 Flowline decommissioning (Rem #33977).

RP = Results Pending

TABLE 5
SUMMARY OF METALS IN SOIL CHEMISTRY DATA
NOBLE ENERGY, INC. - 100322
WIEDEMAN 4-5, WELD COUNTY, COLORADO
REM # 33975

Sample ID	Sample Date	Depth (ft. bgs)	Arsenic (mg/kg)	Barium (mg/kg)	Cadmium (mg/kg)	Chromium (VI) (mg/kg)	Copper (mg/kg)	Lead (mg/kg)	Nickel (mg/kg)	Selenium (mg/kg)	Silver (mg/kg)	Zinc (mg/kg)
ECMC Table 915-1 Limits (Residential SSL)			0.68	15000	71	0.3	3100	400	1500	390	390	23000
ECMC Table 915-1 Limits (Protection of Groundwater SSL)			0.29	82	0.38	0.00067	46	14	26	0.26	0.8	370
FL01R-W@3'	5/10/2024	3	3.07	105	0.234	<0.30*	7.47	5.48	6.56	<0.260	0.0225	23.5
FL01-01@4'	1/31/2024	4	RP	RP	RP	RP	RP	RP	RP	RP	RP	RP
FL02R-W@4 ⁴	1/30/2025	4	2.89	89.6	<0.200	<0.30*	4.67	4.1	4.38	<0.260	0.023	17.7
FL02-01@4 ⁴	1/31/2025	4	RP	RP	RP	RP	RP	RP	RP	RP	RP	RP
FL03R-W@4 ⁵	1/30/2025	4	2.56	104	<0.200	<0.30*	3.94	3.81	4.28	<0.260	0.0207	16.5
FL03-01@4 ⁵	1/31/2025	4	RP	RP	RP	RP	RP	RP	RP	RP	RP	RP
FL04R-W@4 ⁶	1/30/2025	4	2.70	598	<0.200	<0.30*	4.63	4.28	4.25	<0.260	0.0226	19.6
FL04-01@4 ⁶	1/31/2025	4	RP	RP	RP	RP	RP	RP	RP	RP	RP	RP
FL05R-W@4 ⁷	1/30/2025	4	3.27	123	<0.200	<0.30*	5.23	5.42	4.36	<0.260	0.0326	22.5
FL05-01@4 ⁷	1/31/2025	4	RP	RP	RP	RP	RP	RP	RP	RP	RP	RP
FL06R-W@4 ⁸	1/30/2025	4	3.84	75.3	<0.200	<0.30*	4.75	5.1	5.24	<0.260	0.0274	21.4
FL06-01@4 ⁸	1/31/2025	4	RP	RP	RP	RP	RP	RP	RP	RP	RP	RP
BKG01@3 ⁹	5/10/2024	3	4.78	150	0.227	<0.30*	8.21	6.45	9.85	<0.260	0.0355	33.6
1.25x Maximum Background Concentration			5.98	188	0.284	NA	10.3	8.06	12.3	NA	0.0444	42.0

1. **Bold** faced values exceed the ECMC Table 915-1 limit(s), but are within 1.25x background concentrations.
2. **Bold** faced values exceed the ECMC Table 915-1 limit(s) and native background concentrations.
3. Red & blue highlighted soil analytical values indicate an exceedance of the referenced soil screening level (SSL).
4. Non-detect background results accounted for in the highest background concentration by using the reporting limit.
5. * Indicates laboratory minimum detection limit in excess of SSL.

ECMC = Energy & Carbon Management Commission

(<) = Analytical result is less than the indicated laboratory reporting limit.

mg/kg = Milligrams per kilogram

ft. = Feet

bgs = Below ground surface

NA - Not analyzed

RP = Results Pending

4 = Sample collected for Wiedeman 5-5 6 = Sample collected for Wiedeman 18-15 WH

5 = Sample collected for Wiedeman 25- 7 = Sample collected for Wiedeman 22-5 WH

8 = Sample collected for Wiedeman 6-5 WH

9 = Sample collected by Tasman, Inc. as part of the associated Wiedeman 3-5 Flowline decommissioning (Rem #33977).

TABLE 6
SUMMARY OF GROUNDWATER ELEVATION DATA AND ORGANIC CHEMISTRY DATA
NOBLE ENERGY, INC. - 100322
WIEDEMAN 4-5, WELD COUNTY, COLORADO
REM # 33975

Sample ID	Sample Date	Benzene (µg/L)	Toluene (µg/L)	Ethyl-Benzene (µg/L)	Xylenes (µg/L)	Naphthalene (µg/L)	1,2,4- Trimethyl- Benzene (µg/L)	1,3,5- Trimethyl- Benzene (µg/L)	TOC Elevation (ft)	Depth to Groundwater Below TOC (ft)	Depth to Groundwater Below Ground Surface (ft)	Groundwater Elevation (ft)	LNAPL Thickness (ft)
ECMC Table 915-1 Limits		5.0	560	700	1400	140	67	67					
GW01	1/30/2025	<1.0	<1.0	<1.0	<2.0	<1.0	<1.0	<1.0	NM	NM	NM	NM	NM

1. Bold values exceed the ECMC limit(s)
2. Red highlighted groundwater analytical values indicate a regulatory exceedance NM = Not Measured
NP - No measurable LNAPL, NA - Not Analyzed, NL - No Limit, INA - Inaccessible, IW - Insufficient Water, DES - Destroyed

TABLE 7
SUMMARY OF INORGANIC GROUNDWATER CHEMISTRY DATA
NOBLE ENERGY, INC. - 100322
WIEDEMAN 4-5, WELD COUNTY, COLORADO
REM # 33975

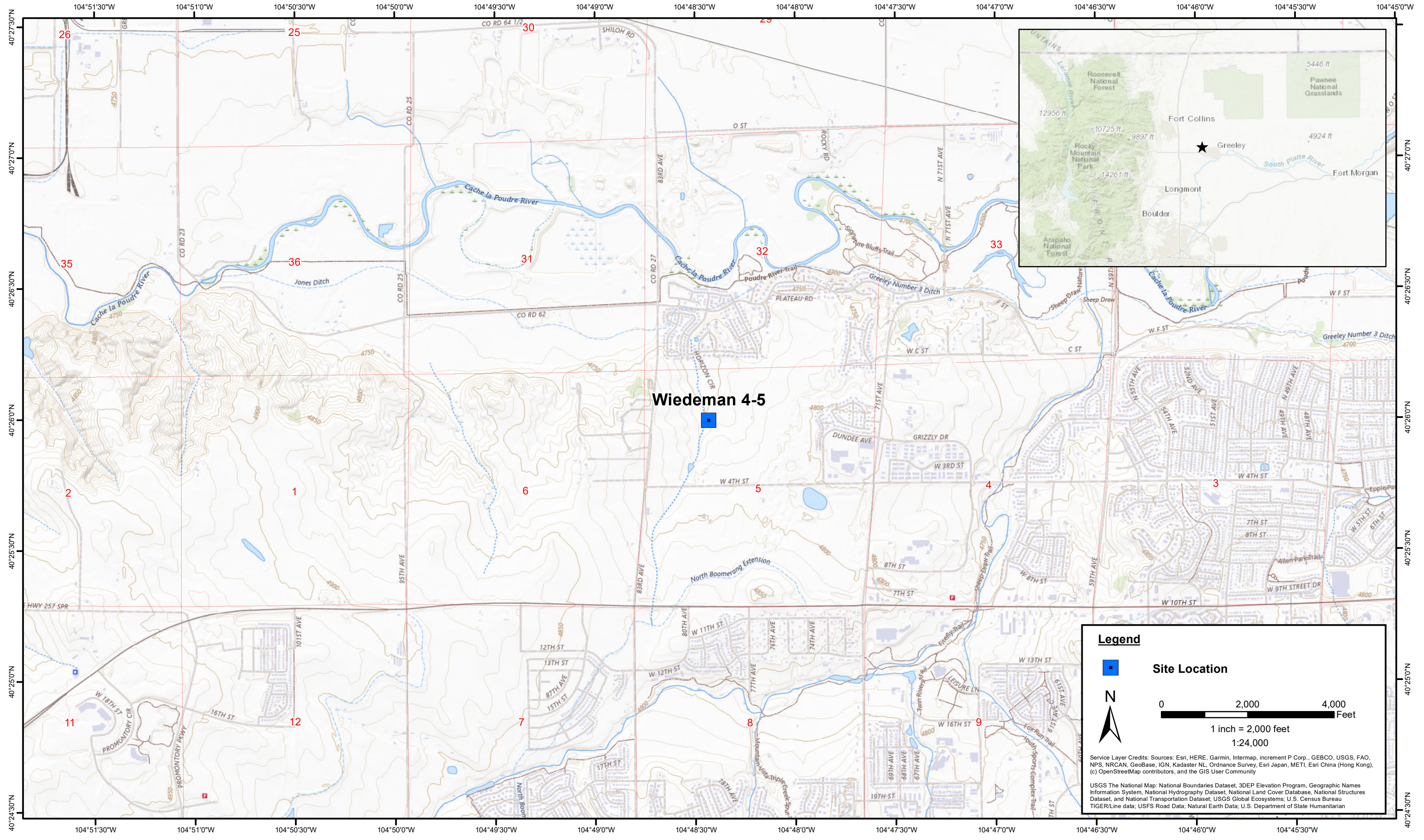
Sample ID	Sample Date	Total Dissolved Solids (mg/L)	Chloride Ion (mg/L)	Sulfate Ion (mg/L)
ECMC Table 915-1 Limits*		<1.25 x local background	250 or <1.25 x local background	250 or <1.25 x local background
GW01	1/30/2025	2040	210	1640

1. Bold values exceed the ECMC limit(s)

2. Blue highlighted groundwater analytical values indicate a regulatory exceedance

NP - No measurable LNAPL, NA - Not Analyzed, INA - Inaccessible, IW - Insufficient Water, DES - Destroyed

*Dissolved metals refer to Colorado Regulation 41 Standards



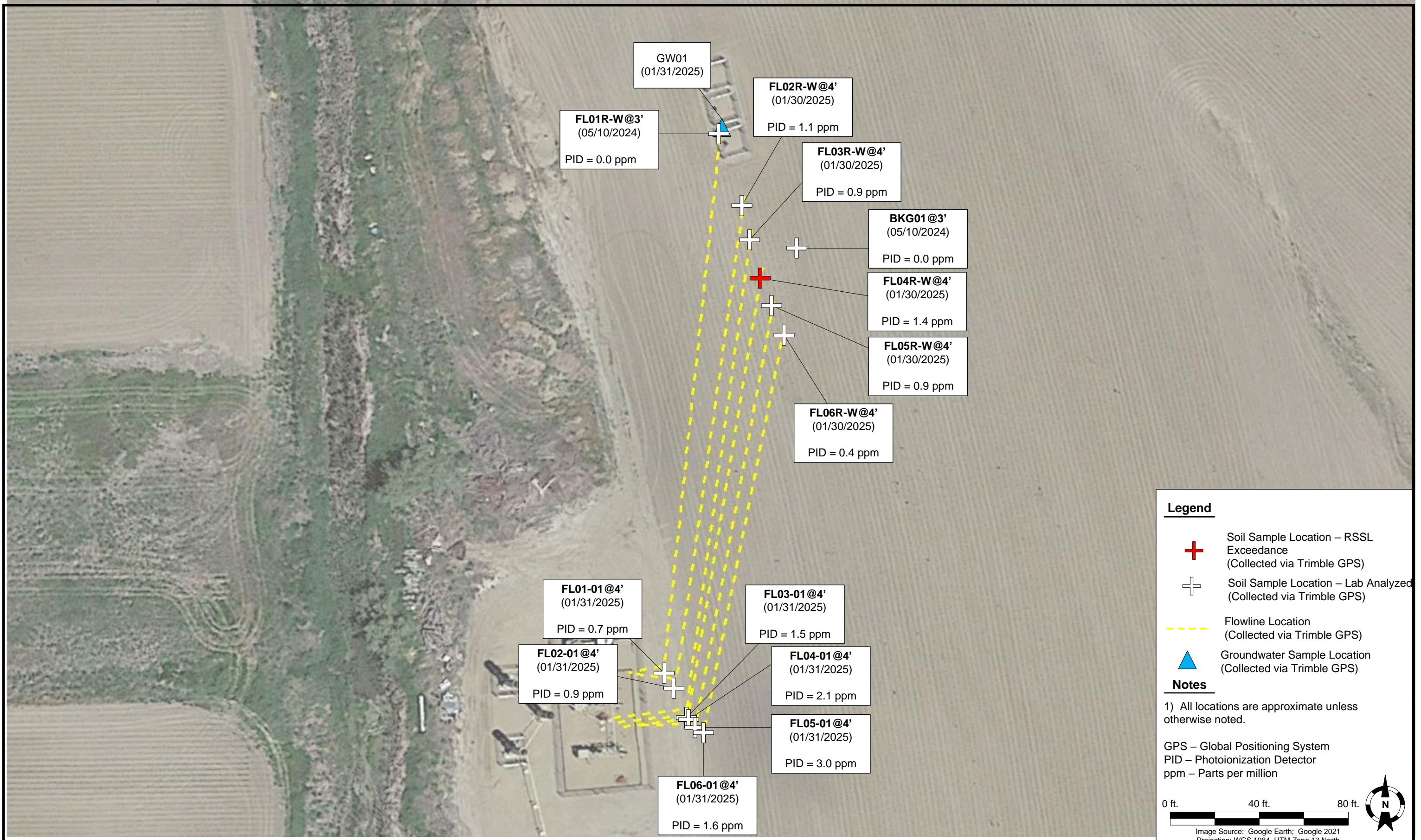
DATE: March 2025
 DESIGNED BY: J. Whritenour
 DRAWN BY: J. Woffinden



Noble Energy, Inc. - 100322 - DJ Basin
Wiedeman 4-5
 NWNW, Section 5 Township 5 North, Range 66 West
 Weld County, Colorado

Site Location Map

Figure 1



DATE: March 13, 2025

DESIGNED BY: J. Whritenour

DRAWN BY: D. Gray



Noble Energy, Inc. – 100322 – DJ Basin
Wiedeman 4-5
 NENW, Section 5, Township 5 North, Range 66 West
 Weld County, Colorado

Flowline Analytical Results Map
 (5/10/2024, 1/30/2025
 & 1/31/2025)