

Kathy Vertiz
Contract EHS Specialist
Caerus Oil and Gas LLC (10456)
143 Diamond Ave.
Parachute, CO 81635
kvertiz@caerusoilandgas.com
(delivered electronically)

August 7, 2024

Final Reclamation – Quantitative Vegetation Survey Report

ECMC Location Name (ID)	STANDARD SHALE-67S99W/11NWNW (323906)
Operator Location Name	D11 799
Legal Description	NWNW Sec. 11 T7S R99W
API	05-045-06914
Geographic Coordinates (WGS84)	39.465252/-108.41506
Surface Ownership	Private
County	Garfield

Introduction

Confluence Compliance Companies, LLC (Confluence) is presenting this report to Caerus Oil and Gas, LLC (Caerus) documenting the results of a quantitative vegetation survey (survey) completed at the former D11 799 well pad (323906) (Location). The survey was conducted to evaluate the final reclamation status of reclaimed surfaces (reclaim) by comparing vegetation cover and composition with the selected reference area(s) (reference). The survey is used alongside a site evaluation to determine if the location meets reclamation standards for applicable regulatory agencies. Included with this report is a review of the methodologies used to evaluate the reclaimed surface, results of those evaluations, and recommendations for how to proceed with this information. Attached are figures illustrating the project location, survey transects, and reclaim and reference areas, along with summaries of collected vegetation data and photo logs.

Background

The Location is on private surface approximately 14.0 miles northwest of Debeque, Colorado. The Location historically contained a single oil and gas well that was plugged and abandoned (P&A) on December 21, 2005 (Form 6 Document: 400119473). The historical well pad surface disturbance was approximately 4.53 acres. The Location was reclaimed in 2011 and has received at least annual monitoring of vegetation since then. In 2024, a Caerus Reclamation Specialist noted comparable vegetation in the reclaim and reference at the Location and recommended a quantitative vegetation survey.

Methods

Any reclaim must meet standards applicable to any regulatory jurisdictions the Location is subject to. This methodology was developed to meet state and federal requirements for upstream oil and gas locations in the State of Colorado without additional municipal or county requirements. Minimum requirements under this scope specify that reclaim species composition is at least 80% comparable to undisturbed reference areas. These requirements are detailed in the Colorado Energy and Carbon

Management Commission (ECMC) Rule 1004.d [1] for final reclamation, and final abandonment requirements set forth in the Department of Interior (DOI) 43 CFR Part 3160 [2]. To evaluate if the Location meets these regulatory requirements, Confluence selected a line-point intercept vegetation cover survey method with plot-level species inventories from the Monitoring Manual for Grassland, Shrubland and Savanna Ecosystems (Volume 2) [3].

Prior to conducting the survey, a desktop review of available records and historical aerial imagery was performed to define and map all portions of the historical surface disturbance and identify and map comparable reference areas. Wherever feasible, reference area(s) were selected to ensure that comparative assessments occur in areas not previously impacted by oil and gas operations or other surface disturbing activities, have similar slope and aspect to the reclaimed surface, and are to the extent practicable, reflective of pre-disturbance conditions or desired final ecological condition for the reclaimed surface. When on-site, applicability of the reclaim and reference transect locations selected during the desktop review was confirmed based on observed field conditions. Transect locations were selected to best represent the vegetative cover and species composition of the respective areas, and to limit subjectivity of field personnel.

Per the 2023 BLM Oil and Gas Reclamation Monitoring Protocols, a minimum of 150 survey points is required in both reclaim and reference area(s). Additional reclaim transects are required when the historical access road, pipeline right-of-way, or other linear feature is greater than 0.25 miles. If linear features greater than 0.25 miles are present, one additional reclaim transect is collected for every 0.25-mile feature. Total transect length must be at least one quarter of the length of the historical surface disturbance perimeter to ensure collected data were representative of overall Location conditions.

Foliar and basal cover, along with non-vegetated and noxious weed occurrences, were documented at each survey point. Survey point data were documented in the attached Transect Detail – Field Data Tables. Photographs were collected throughout the survey to document site conditions and depict transects. These photos are included in the Vegetation Assessment Photo Log. The Reclamation Survey Site Diagram illustrates transect locations as well as photo collection points.

Noxious weeds, as defined by the Colorado Department of Agriculture (CDA), were excluded from the percent of reference vegetative coverage calculations, per ECMC Rule 1004.d. Undesirable species, as defined by the United States Department of Agriculture (USDA) Natural Resources Conservation Service (NRCS) and other information communications, were also excluded to ensure reclamation vegetative composition meets stakeholder standards. All other vegetation, was identified by growth habit (grass, forb, shrub) and was considered desirable vegetative cover. Noxious, undesirable, and desirable species observed during the survey are quantified in the attached summary of field data.

Results

The survey was conducted on June 10, 2024. Based on the size of the reclaimed well pad and survey transect design requirements, three 50-point survey transects were established at the historical well pad, and two 75-point survey transects were established in the adjacent reference area. Findings of the survey are presented in the table below. Additional detail on survey results can be found in the attached summary of field data, relative foliar species abundance tables, and field data tables.



Reclaim Vegetation Cover	Cover (%)	Reference Vegetation Cover	Cover (%)
Desirable Foliar Cover	76.7	Desirable Foliar Cover	63.3
Undesirable Foliar Cover	2.7	Undesirable Foliar Cover	4.7
Noxious Weed Foliar Cover	10.0	Noxious Weed Foliar Cover	25.3
Desirable vegetation comparison (reclaim/reference)			121%

Analysis and Recommendations

Desirable vegetation cover in the reclaim is 121% of reference, which meets the 80% threshold for final reclamation vegetation establishment as specified by the ECMC. Based on these results and comparable occurrences of noxious weeds and undesirable species in both areas, Confluence recommends submittal of a Final Abandonment Notice (FAN) and Form 4 (Final Reclamation Completion Notice) to document successful completion of final reclamation and notify regulators that the site is ready for final reclamation inspections.

Confluence appreciates the opportunity to provide support for your vegetation monitoring program. If you have any questions about our methodology, the results of this assessment, or our conclusions, please contact me.

Respectfully,



Chris Hines
 Reclamation Specialist/CEO
 970-261-1127 (M)
 chris.hines@confluence-cc.com

Attachments

- Topographic Location Map
- QVS Site Diagram
- Summary of Field Data
- Species Abundance Tables
- Transect Detail – Field Data Tables
- Vegetation Assessment Photo Log

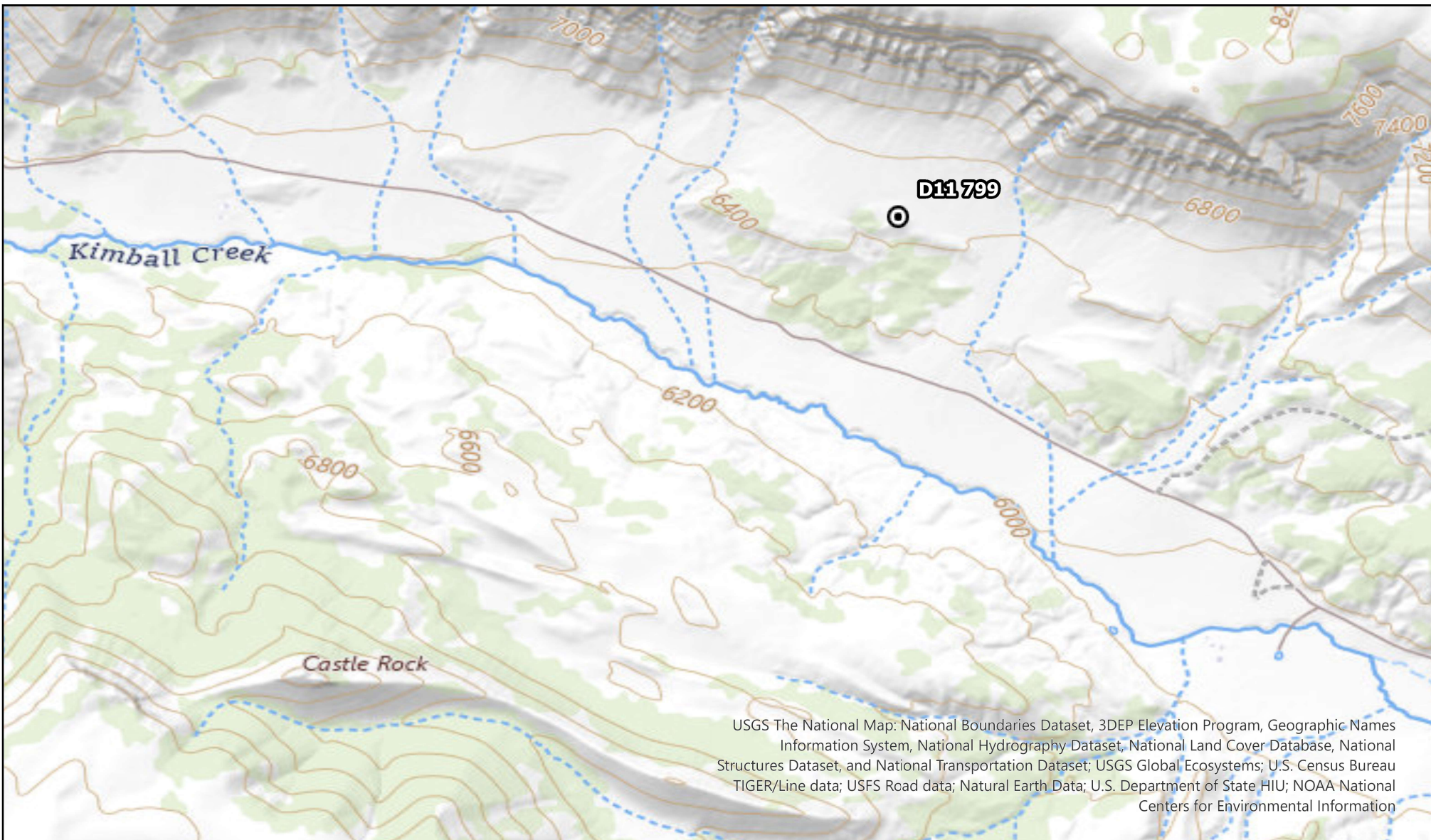


References

1. Colorado Department of Natural Resources, Energy and Carbon Management Commission. “Rules and Regulations”, April 30, 2022, [Complete Rules \(100 - 1200 Series\) \(state.co.us\)](#).
2. United States Department of the Interior, Bureau of Land Management. “43 CFR Subpart 3160 - Onshore Oil and Gas Operations: General”, 1983, [eCFR :: 43 CFR Part 3160 -- Onshore Oil and Gas Operations](#).
3. United States Department of the Interior, Bureau of Land Management. “Surface Operating Standards and Guidelines for Oil and Gas Exploration and Development – The Gold Book”, 2007, [The Gold Book | Bureau of Land Management \(blm.gov\)](#).
4. Herrcik, Jeffrey E, et al. “Monitoring Manual for Grassland, Shrubland and Savanna Ecosystems.” Monitoring Manual, 2nd Edition, USDA - ARS Jornada Experimental Range, 2009, <https://aim.landscapetoolbox.org/wp-content/uploads/2015/08/Monitoring-Manual-Volume-II.pdf>.
5. Bureau of Land Management, Colorado River Valley Field Office and Grand Junction Field Office. “Oil and Gas Reclamation Monitoring Protocols, 2023”.

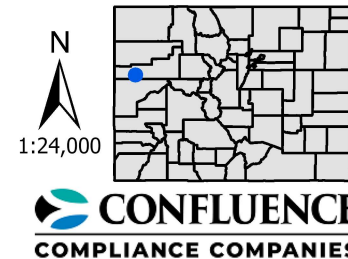
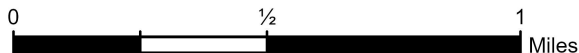


Topographic Location Map

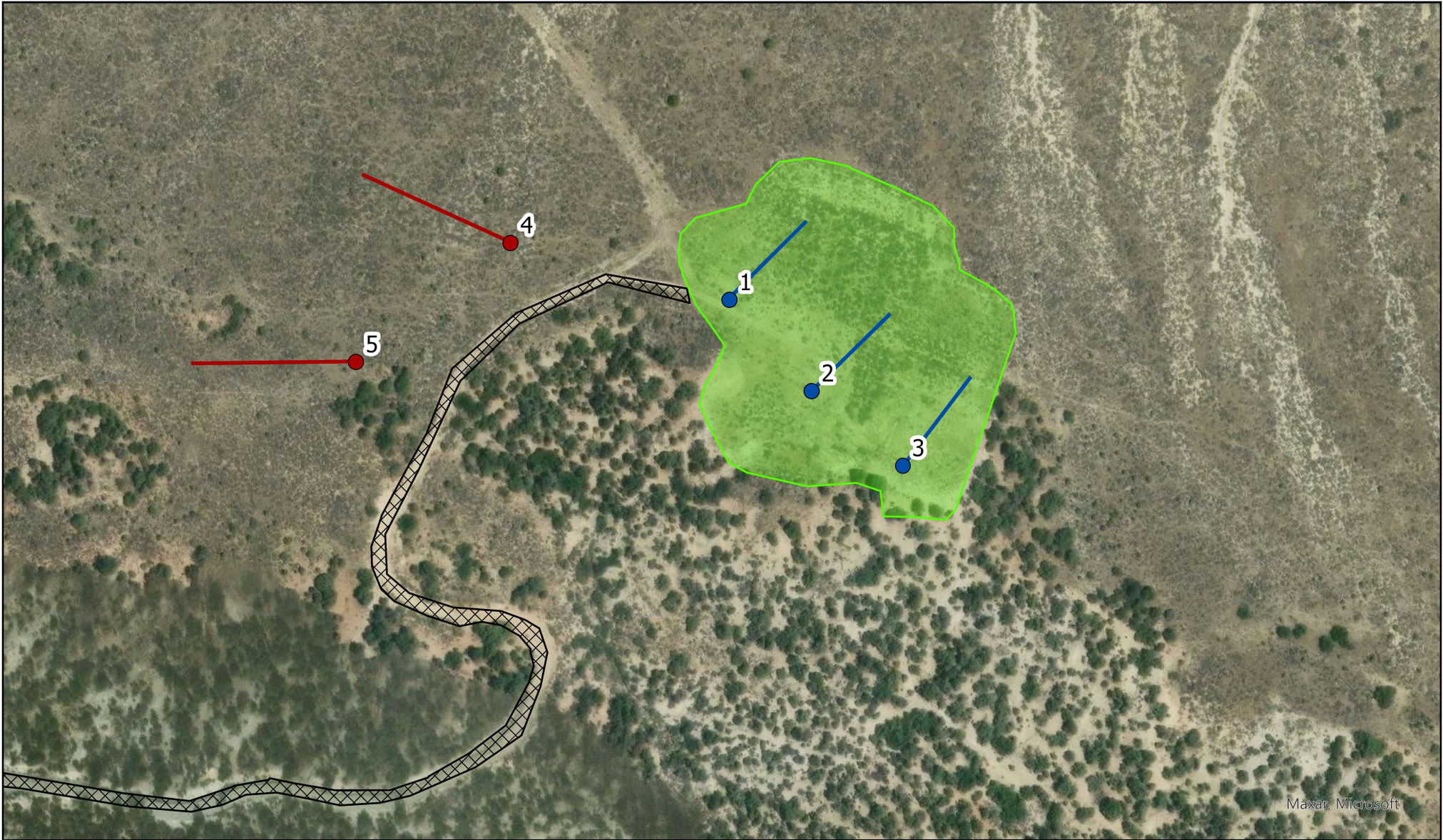


USGS The National Map: National Boundaries Dataset, 3DEP Elevation Program, Geographic Names Information System, National Hydrography Dataset, National Land Cover Database, National Structures Dataset, and National Transportation Dataset; USGS Global Ecosystems; U.S. Census Bureau TIGER/Line data; USFS Road data; Natural Earth Data; U.S. Department of State HIU; NOAA National Centers for Environmental Information

Caerus Oil and Gas LLC
D11 799 (SS 6402)
ECMC Location ID: 323906 | API: 05-045-06914
Lat/Long: 39.465252, -108.41506
Location: NWNW 11 7S99W Garfield County



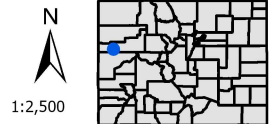
Survey Diagram



Caerus Oil and Gas LLC
D11 799 (SS 6402)
ECMC Location ID: 323906 | API: 05-045-06914
Lat/Long: 39.465252, -108.41506
Location: NWNW 11 7S99W Garfield County

Legend

-  Reclaim Transect Photo Point
-  Reference Transect Photo Point
-  Reclaim Transect
-  Reference Transect
-  Variance Area
-  Reclamation Area



1:2,500

**CONFLUENCE**
COMPLIANCE COMPANIES

0 25 50 100
Meters

Spatial data was collected using a handheld GPS unit with submeter accuracy. Illustration discrepancies may be present in this diagram due to the inherent limitations of data accuracy for both project data and the underlying aerial imagery. The position of illustrated data may have been manually adjusted to align with the aerial imagery in a manner more representative of field conditions for presentation purposes only.

Quantitative Vegetation Survey - Summary of Field Data

Client	Caerus Oil and Gas, Inc.	API(s)	
Operator Location	D11 799		05-045-06914
CCC Disturbance ID	COG240604.DIS0001		
ECMC Location ID	323906		
Reclamation Phase	Final Reclamation		
BLM Area	Private		
Latitude/Longitude	39.465252/-108.41506		
Assessment Date	6/10/2024		
Inspector Name	Alex Slorby		

The survey methodology employed by Confluence is the line-point intercept method with plot-level species inventories conducted in accordance with the Monitoring Manual for Grassland, Shrubland and Savanna Ecosystems. Vegetation cover data is collected along each transect. Foliar and basal cover, along with non-vegetated and noxious weed occurrences, are documented at each survey point. Transects are completed in the reclaim and reference areas. The desirable foliar cover (grasses, forbs, shrubs) in each survey transect area is calculated by summing the total number of foliar occurrences (#), excluding noxious weeds and undesirable species, and dividing by the total possible foliar occurrences in the transect. This is completed for both transects in the reclaim area and in the reference area. The resulting values from each transect in the respective areas are then averaged to surmise an overall coverage and/or composition for the location. For this location:

Reclaim Area Vegetation

Desirable Foliar Cover = 76.7%
 $[(100 + 5 + 10) / 150] * 100$

Reference Area Vegetation

Desirable Foliar Cover = 63.3%
 $[(62 + 11 + 22) / 150] * 100$

For the purposes of this assessment, undesirable foliar cover is defined as introduced and non-native to the lower 48 states by the USDA NRCS and is not considered beneficial for reclamation purposes. The undesirable foliar cover (%) in each survey transect area is calculated by summing the total number of undesirable foliar occurrences (#), excluding noxious weeds, and dividing by the total possible foliar occurrences in the transect. This is completed for both transects in the reclaim area and in the reference area. The resulting values from each transect in the respective areas are then averaged to surmise an overall coverage and/or composition for the location. For this location:

Noxious Weed/Undesirable Foliar Cover = 12.7%
 $[(4 + 15) / 150] * 100$

Noxious Weed/Undesirable Foliar Cover = 30%
 $[(7 + 38) / 150] * 100$

The percent of reference used to evaluate the reclamation area for compliance with ECMC Rule 1003.e(2) is calculated by dividing the averaged foliar cover (%) in the reclaim area by the averaged foliar cover (%) in the reference area. For this location:

Percent of Reference = 121%
 $76.7% / 63.3%$

Cover Type	Reclaim Transect(s) x 3		Reference Transect(s) x 2	
	#	Overall Cover	#	Overall Cover
Desirable Foliar Cover	115	76.7%	95	63.3%
Grass	100	66.7%	62	41.3%
Forb	5	3.3%	11	7.3%
Shrub	10	6.7%	22	14.7%
Desirable Basal Cover	42	28.0%	55	36.7%
Grass	37	24.7%	35	23.3%
Forb	4	2.7%	11	7.3%
Shrub	1	0.7%	9	6.0%
Undesirable Cover	14	9.3%	18	12.0%
Foliar	4	2.7%	7	4.7%
Basal	10	6.7%	11	7.3%
Unvegetated	16	10.7%	10	6.7%
Bare Ground	7	4.7%	4	2.7%
Litter	6	4.0%	6	4.0%
Rock	3	2.0%	0	0.0%
Other	0	0.0%	0	0.0%
Noxious Weeds Cover	27	18.0%	63	42.0%
Foliar	15	10.0%	38	25.3%
Basal	12	8.0%	25	16.7%
Foliar Quality Assurance Total	150	100%	150	100%

Reclaim Transect Global ID(s):
 74bfe79a-d164-4b72-a67c-3b7a58c1c8cf,
 980d5058-011e-4e22-9c4b-07030ec159af,
 e0f4ee3f-3301-464e-be0d-5693ef5c842d,

Reference Transect Global ID(s):
 c02ad4f-6fab-4082-954c-9254eaa9325e,
 dada2a6a-7926-461f-9e94-27b9c46657df,

Client Caerus Oil and Gas, Inc.
Operator Location D11 799
Assessment Date 6/10/2024
Inspector Name Alex Slorby

Transect Detail - Reclamation Area Observation Summary

Plant species indicated by red text include all State-listed noxious weeds and undesirable species identified as introduced and non-native to the lower 48 states by the USDA NRCS not considered beneficial for reclamation purposes.

Observation Summary				
Life Cycle	Foliar Occurrence	Foliar Cover	Basal Occurrence	Basal Cover
Annual	20	13%	22	15%
Perennial	114	76%	42	28%
Unvegetated	16	11%	86	57%
Grand Total	150	100%	150	100%

Life Cycle	Species Code	Scientific Name	Common Name	Cover Type	Foliar Occurrence	Foliar Cover	Basal Occurrence	Basal Cover
Annual	ALS18	<i>Alyssum simplex</i>	Alyssum	Undesirable	3	2%	10	7%
Annual	BRTE	<i>Bromus tectorum</i>	Downy brome	Noxious List C	15	10%	12	8%
Annual	DEPI	<i>Descurainia pinnata</i>	Western tansymustard	Forb	1	1%	0	0%
Annual	TRDU	<i>Tragopogon dubius</i>	Yellow salsify	Undesirable	1	1%	0	0%
NA	NA	NA	Bare Ground	Unvegetated	7	5%	16	11%
NA	NA	NA	Litter	Unvegetated	6	4%	57	38%
NA	NA	NA	Rock	Unvegetated	3	2%	13	9%
Perennial	AGCR	<i>Agropyron cristatum</i>	Crested wheatgrass	Grass	1	1%	0	0%
Perennial	ATGA	<i>Atriplex gardneri</i>	Gardners saltbush	Shrub	7	5%	1	1%
Perennial	BRMA4	<i>Bromus marginatus</i>	Mountain brome	Grass	5	3%	3	2%
Perennial	ELELE	<i>Elymus elymoides</i>	Bottlebrush squirreltail	Grass	1	1%	0	0%
Perennial	ELTR7	<i>Elymus trachycaulus</i>	Slender wheatgrass	Grass	11	7%	4	3%
Perennial	GUSA2	<i>Gutierrezia sarothrae</i>	Broom snakeweed	Shrub	3	2%	0	0%
Perennial	LYJU	<i>Lygodesmia juncea</i>	Rush Skeletonplant	Forb	1	1%	1	1%
Perennial	PASM	<i>Pascopyrum smithii</i>	Western Wheatgrass	Grass	82	55%	30	20%
Perennial	SPCO	<i>Sphaeralcea coccinea</i>	Scarlet globemallow	Forb	2	1%	2	1%
Perennial	Various	<i>Vicia Spp.</i>	Vetch	Forb	1	1%	1	1%

Client Caerus Oil and Gas, Inc.
Operator Location Reference location(s) for D11 799
Assessment Date 6/10/2024
Inspector Name Alex Slorby

Transect Detail - Reference Area Observation Summary

Plant species indicated by red text include all State-listed noxious weeds and undesirable species identified as introduced and non-native to the lower 48 states by the USDA NRCS not considered beneficial for reclamation purposes.

Observation Summary				
Life Cycle	Foliar Occurrence	Foliar Cover	Basal Occurrence	Basal Cover
Annual	45	30%	36	24%
Perennial	95	63%	55	37%
Unvegetated	10	7%	59	39%
Grand Total	150	100%	150	100%

Life Cycle	Species Code	Scientific Name	Common Name	Cover Type	Foliar Occurrence	Foliar Cover	Basal Occurrence	Basal Cover
Annual	ALS18	<i>Alyssum simplex</i>	Alyssum	Undesirable	3	2%	10	7%
Annual	BRTE	<i>Bromus tectorum</i>	Downy brome	Noxious List C	38	25%	25	17%
Annual	SIAL2	<i>Sisymbrium altissimum</i>	Tumblemustard	Undesirable	4	3%	1	1%
NA	NA	NA	Litter	Unvegetated	6	4%	49	33%
NA	NA	NA	Bare Ground	Unvegetated	4	3%	10	7%
Perennial	AGCR	<i>Agropyron cristatum</i>	Crested wheatgrass	Grass	4	3%	0	0%
Perennial	ATGA	<i>Atriplex gardneri</i>	Gardners saltbush	Shrub	16	11%	5	3%
Perennial	ELTR7	<i>Elymus trachycaulus</i>	Slender wheatgrass	Grass	38	25%	22	15%
Perennial	GUSA2	<i>Gutierrezia sarothrae</i>	Broom snakeweed	Shrub	4	3%	2	1%
Perennial	HECO26	<i>Hesperostipa comata</i>	Needle and thread	Grass	18	12%	12	8%
Perennial	LYJU	<i>Lygodesmia juncea</i>	Rush Skeletonplant	Forb	1	1%	0	0%
Perennial	PASM	<i>Pascopyrum smithii</i>	Western Wheatgrass	Grass	2	1%	1	1%
Perennial	PECY4	<i>Penstemon cyanocaulis</i>	Bluestem Penstemon	Forb	1	1%	0	0%

Client Caerus Oil and Gas, Inc.
 Operator Location Information D11 799
 Assessment Date 6/10/2024
 Inspector Name Alex Slorby
 Transect Length (m) 50

Reclaim Transect 1

Point #	Cover Type - Foliar	Species - Foliar	Cover Type - Basal Species - Basal
1	Grass	Western Wheatgrass (Pascopyrum smithii) - PASM	Unvegetated Litter
2	Grass	Western Wheatgrass (Pascopyrum smithii) - PASM	Grass Western Wheatgrass (Pascopyrum smithii) - PASM
3	Undesirable	Alyssum (Alyssum simplex) - ALS18	Unvegetated Rock
4	Grass	Western Wheatgrass (Pascopyrum smithii) - PASM	Unvegetated Rock
5	Grass	Western Wheatgrass (Pascopyrum smithii) - PASM	Unvegetated Litter
6	Grass	Western Wheatgrass (Pascopyrum smithii) - PASM	Unvegetated Litter
7	Grass	Western Wheatgrass (Pascopyrum smithii) - PASM	Grass Western Wheatgrass (Pascopyrum smithii) - PASM
8	Grass	Western Wheatgrass (Pascopyrum smithii) - PASM	Unvegetated Bare Ground
9	Grass	Western Wheatgrass (Pascopyrum smithii) - PASM	Unvegetated Bare Ground
10	Grass	Western Wheatgrass (Pascopyrum smithii) - PASM	Unvegetated Rock
11	Unvegetated	Bare Ground	Unvegetated Bare Ground
12	Grass	Western Wheatgrass (Pascopyrum smithii) - PASM	Unvegetated Litter
13	Grass	Western Wheatgrass (Pascopyrum smithii) - PASM	Unvegetated Litter
14	Grass	Western Wheatgrass (Pascopyrum smithii) - PASM	Unvegetated Rock
15	Unvegetated	Rock	Unvegetated Rock
16	Grass	Western Wheatgrass (Pascopyrum smithii) - PASM	Grass Western Wheatgrass (Pascopyrum smithii) - PASM
17	Grass	Western Wheatgrass (Pascopyrum smithii) - PASM	Undesirable Alyssum (Alyssum simplex) - ALS18
18	Grass	Western Wheatgrass (Pascopyrum smithii) - PASM	Unvegetated Bare Ground
19	Grass	Western Wheatgrass (Pascopyrum smithii) - PASM	Unvegetated Bare Ground
20	Grass	Western Wheatgrass (Pascopyrum smithii) - PASM	Grass Western Wheatgrass (Pascopyrum smithii) - PASM
21	Unvegetated	Litter	Unvegetated Litter
22	Grass	Mountain brome (Bromus marginatus) - BRMA4	Grass Mountain brome (Bromus marginatus) - BRMA4
23	Unvegetated	Bare Ground	Unvegetated Bare Ground
24	Grass	Western Wheatgrass (Pascopyrum smithii) - PASM	Unvegetated Litter
25	Grass	Western Wheatgrass (Pascopyrum smithii) - PASM	Unvegetated Litter
26	Grass	Western Wheatgrass (Pascopyrum smithii) - PASM	Undesirable Alyssum (Alyssum simplex) - ALS18
27	Grass	Western Wheatgrass (Pascopyrum smithii) - PASM	Undesirable Alyssum (Alyssum simplex) - ALS18
28	Undesirable	Alyssum (Alyssum simplex) - ALS18	Undesirable Alyssum (Alyssum simplex) - ALS18
29	Grass	Western Wheatgrass (Pascopyrum smithii) - PASM	Noxious List C Downy brome (Bromus tectorum) - BRTE
30	Grass	Western Wheatgrass (Pascopyrum smithii) - PASM	Undesirable Alyssum (Alyssum simplex) - ALS18
31	Noxious List C	Downy brome (Bromus tectorum) - BRTE	Undesirable Alyssum (Alyssum simplex) - ALS18
32	Undesirable	Alyssum (Alyssum simplex) - ALS18	Unvegetated Litter
33	Grass	Western Wheatgrass (Pascopyrum smithii) - PASM	Unvegetated Litter
34	Noxious List C	Downy brome (Bromus tectorum) - BRTE	Unvegetated Bare Ground
35	Shrub	Gardners saltbush (Atriplex gardneri) - ATGA	Grass Western Wheatgrass (Pascopyrum smithii) - PASM
36	Grass	Western Wheatgrass (Pascopyrum smithii) - PASM	Unvegetated Litter
37	Grass	Western Wheatgrass (Pascopyrum smithii) - PASM	Grass Western Wheatgrass (Pascopyrum smithii) - PASM
38	Grass	Slender wheatgrass (Elymus trachycaulus) - ELTR7	Grass Slender wheatgrass (Elymus trachycaulus) - ELTR7
39	Grass	Slender wheatgrass (Elymus trachycaulus) - ELTR7	Unvegetated Litter
40	Grass	Western Wheatgrass (Pascopyrum smithii) - PASM	Grass Western Wheatgrass (Pascopyrum smithii) - PASM
41	Grass	Western Wheatgrass (Pascopyrum smithii) - PASM	Unvegetated Litter
42	Shrub	Gardners saltbush (Atriplex gardneri) - ATGA	Noxious List C Downy brome (Bromus tectorum) - BRTE
43	Shrub	Gardners saltbush (Atriplex gardneri) - ATGA	Noxious List C Downy brome (Bromus tectorum) - BRTE
44	Grass	Western Wheatgrass (Pascopyrum smithii) - PASM	Grass Western Wheatgrass (Pascopyrum smithii) - PASM
45	Noxious List C	Downy brome (Bromus tectorum) - BRTE	Noxious List C Downy brome (Bromus tectorum) - BRTE
46	Grass	Western Wheatgrass (Pascopyrum smithii) - PASM	Unvegetated Rock
47	Forb	Scarlet globemallow (Sphaeralcea coccinea) - SPCO	Forb Scarlet globemallow (Sphaeralcea coccinea) - SPCO
48	Unvegetated	Litter	Unvegetated Litter
49	Grass	Western Wheatgrass (Pascopyrum smithii) - PASM	Unvegetated Litter
50	Noxious List C	Downy brome (Bromus tectorum) - BRTE	Unvegetated Litter

Client Caerus Oil and Gas, Inc.
 Operator Location Information D11 799
 Assessment Date 6/10/2024
 Inspector Name Alex Slorby
 Transect Length (m) 50

Reclaim Transect 2

Point #	Cover Type - Foliar	Species - Foliar	Cover Type - Basal	Species - Basal
1	Grass	Western Wheatgrass (Pascopyrum smithii) - PASM	Grass	Western Wheatgrass (Pascopyrum smithii) - PASM
2	Grass	Western Wheatgrass (Pascopyrum smithii) - PASM	Unvegetated	Litter
3	Unvegetated	Bare Ground	Unvegetated	Bare Ground
4	Unvegetated	Litter	Unvegetated	Litter
5	Unvegetated	Rock	Unvegetated	Rock
6	Unvegetated	Bare Ground	Unvegetated	Bare Ground
7	Grass	Western Wheatgrass (Pascopyrum smithii) - PASM	Grass	Western Wheatgrass (Pascopyrum smithii) - PASM
8	Grass	Slender wheatgrass (Elymus trachycaulus) - ELTR7	Grass	Slender wheatgrass (Elymus trachycaulus) - ELTR7
9	Grass	Western Wheatgrass (Pascopyrum smithii) - PASM	Grass	Western Wheatgrass (Pascopyrum smithii) - PASM
10	Grass	Western Wheatgrass (Pascopyrum smithii) - PASM	Unvegetated	Litter
11	Grass	Western Wheatgrass (Pascopyrum smithii) - PASM	Grass	Western Wheatgrass (Pascopyrum smithii) - PASM
12	Grass	Western Wheatgrass (Pascopyrum smithii) - PASM	Unvegetated	Rock
13	Grass	Western Wheatgrass (Pascopyrum smithii) - PASM	Unvegetated	Litter
14	Grass	Western Wheatgrass (Pascopyrum smithii) - PASM	Unvegetated	Litter
15	Grass	Western Wheatgrass (Pascopyrum smithii) - PASM	Grass	Western Wheatgrass (Pascopyrum smithii) - PASM
16	Grass	Slender wheatgrass (Elymus trachycaulus) - ELTR7	Unvegetated	Litter
17	Grass	Western Wheatgrass (Pascopyrum smithii) - PASM	Unvegetated	Litter
18	Forb	Vetch (Vicia Spp.) - Various	Forb	Vetch (Vicia Spp.) - Various
19	Unvegetated	Bare Ground	Unvegetated	Bare Ground
20	Grass	Mountain brome (Bromus marginatus) - BRMA4	Grass	Mountain brome (Bromus marginatus) - BRMA4
21	Grass	Western Wheatgrass (Pascopyrum smithii) - PASM	Unvegetated	Rock
22	Grass	Slender wheatgrass (Elymus trachycaulus) - ELTR7	Unvegetated	Bare Ground
23	Grass	Slender wheatgrass (Elymus trachycaulus) - ELTR7	Unvegetated	Litter
24	Grass	Western Wheatgrass (Pascopyrum smithii) - PASM	Grass	Western Wheatgrass (Pascopyrum smithii) - PASM
25	Grass	Western Wheatgrass (Pascopyrum smithii) - PASM	Unvegetated	Litter
26	Grass	Slender wheatgrass (Elymus trachycaulus) - ELTR7	Grass	Slender wheatgrass (Elymus trachycaulus) - ELTR7
27	Grass	Western Wheatgrass (Pascopyrum smithii) - PASM	Grass	Western Wheatgrass (Pascopyrum smithii) - PASM
28	Grass	Western Wheatgrass (Pascopyrum smithii) - PASM	Unvegetated	Litter
29	Grass	Slender wheatgrass (Elymus trachycaulus) - ELTR7	Grass	Slender wheatgrass (Elymus trachycaulus) - ELTR7
30	Grass	Mountain brome (Bromus marginatus) - BRMA4	Unvegetated	Litter
31	Grass	Mountain brome (Bromus marginatus) - BRMA4	Grass	Mountain brome (Bromus marginatus) - BRMA4
32	Grass	Western Wheatgrass (Pascopyrum smithii) - PASM	Unvegetated	Bare Ground
33	Grass	Western Wheatgrass (Pascopyrum smithii) - PASM	Unvegetated	Litter
34	Unvegetated	Bare Ground	Unvegetated	Bare Ground
35	Unvegetated	Litter	Unvegetated	Litter
36	Grass	Western Wheatgrass (Pascopyrum smithii) - PASM	Unvegetated	Litter
37	Grass	Western Wheatgrass (Pascopyrum smithii) - PASM	Unvegetated	Litter
38	Unvegetated	Litter	Unvegetated	Litter
39	Grass	Slender wheatgrass (Elymus trachycaulus) - ELTR7	Unvegetated	Litter
40	Grass	Western Wheatgrass (Pascopyrum smithii) - PASM	Grass	Western Wheatgrass (Pascopyrum smithii) - PASM
41	Noxious List C	Downy brome (Bromus tectorum) - BRTE	Unvegetated	Rock
42	Grass	Slender wheatgrass (Elymus trachycaulus) - ELTR7	Unvegetated	Litter
43	Grass	Western Wheatgrass (Pascopyrum smithii) - PASM	Grass	Western Wheatgrass (Pascopyrum smithii) - PASM
44	Grass	Western Wheatgrass (Pascopyrum smithii) - PASM	Grass	Western Wheatgrass (Pascopyrum smithii) - PASM
45	Grass	Western Wheatgrass (Pascopyrum smithii) - PASM	Grass	Western Wheatgrass (Pascopyrum smithii) - PASM
46	Grass	Western Wheatgrass (Pascopyrum smithii) - PASM	Unvegetated	Litter
47	Grass	Western Wheatgrass (Pascopyrum smithii) - PASM	Unvegetated	Litter
48	Shrub	Gardners saltbush (Atriplex gardneri) - ATGA	Noxious List C	Downy brome (Bromus tectorum) - BRTE
49	Noxious List C	Downy brome (Bromus tectorum) - BRTE	Noxious List C	Downy brome (Bromus tectorum) - BRTE
50	Shrub	Gardners saltbush (Atriplex gardneri) - ATGA	Unvegetated	Rock

Client Caerus Oil and Gas, Inc.
 Operator Location Information D11 799
 Assessment Date 6/10/2024
 Inspector Name Alex Slorby
 Transect Length (m) 50

Reclaim Transect 3

Point #	Cover Type - Foliar	Species - Foliar	Cover Type - Basal	Species - Basal
1	Unvegetated	Bare Ground	Unvegetated	Bare Ground
2	Forb	Rush Skeletonplant (Lygodesmia juncea) - LYJU	Forb	Rush Skeletonplant (Lygodesmia juncea) - LYJU
3	Grass	Western Wheatgrass (Pascopyrum smithii) - PASM	Unvegetated	Litter
4	Unvegetated	Rock	Unvegetated	Rock
5	Grass	Western Wheatgrass (Pascopyrum smithii) - PASM	Unvegetated	Litter
6	Shrub	Gardners saltbush (Atriplex gardneri) - ATGA	Unvegetated	Litter
7	Unvegetated	Litter	Unvegetated	Litter
8	Grass	Western Wheatgrass (Pascopyrum smithii) - PASM	Unvegetated	Litter
9	Shrub	Gardners saltbush (Atriplex gardneri) - ATGA	Shrub	Gardners saltbush (Atriplex gardneri) - ATGA
10	Grass	Western Wheatgrass (Pascopyrum smithii) - PASM	Grass	Western Wheatgrass (Pascopyrum smithii) - PASM
11	Grass	Western Wheatgrass (Pascopyrum smithii) - PASM	Unvegetated	Litter
12	Grass	Western Wheatgrass (Pascopyrum smithii) - PASM	Unvegetated	Litter
13	Undesirable	Yellow salsify (Tragopogon dubius) - TRDU	Unvegetated	Litter
14	Grass	Western Wheatgrass (Pascopyrum smithii) - PASM	Grass	Western Wheatgrass (Pascopyrum smithii) - PASM
15	Forb	Western tansymustard (Descurainia pinnata) - DEPI	Unvegetated	Litter
16	Grass	Bottlebrush squirreltail (Elymus elymoides) - ELELE	Unvegetated	Litter
17	Grass	Western Wheatgrass (Pascopyrum smithii) - PASM	Unvegetated	Bare Ground
18	Grass	Western Wheatgrass (Pascopyrum smithii) - PASM	Unvegetated	Litter
19	Grass	Western Wheatgrass (Pascopyrum smithii) - PASM	Unvegetated	Litter
20	Grass	Western Wheatgrass (Pascopyrum smithii) - PASM	Unvegetated	Litter
21	Grass	Western Wheatgrass (Pascopyrum smithii) - PASM	Grass	Western Wheatgrass (Pascopyrum smithii) - PASM
22	Grass	Western Wheatgrass (Pascopyrum smithii) - PASM	Unvegetated	Litter
23	Grass	Western Wheatgrass (Pascopyrum smithii) - PASM	Grass	Western Wheatgrass (Pascopyrum smithii) - PASM
24	Grass	Western Wheatgrass (Pascopyrum smithii) - PASM	Grass	Western Wheatgrass (Pascopyrum smithii) - PASM
25	Grass	Western Wheatgrass (Pascopyrum smithii) - PASM	Grass	Western Wheatgrass (Pascopyrum smithii) - PASM
26	Grass	Mountain brome (Bromus marginatus) - BRMA4	Grass	Western Wheatgrass (Pascopyrum smithii) - PASM
27	Grass	Crested wheatgrass (Agropyron cristatum) - AGCR	Undesirable	Alyssum (Alyssum simplex) - ALSI8
28	Grass	Western Wheatgrass (Pascopyrum smithii) - PASM	Grass	Western Wheatgrass (Pascopyrum smithii) - PASM
29	Grass	Western Wheatgrass (Pascopyrum smithii) - PASM	Unvegetated	Litter
30	Grass	Western Wheatgrass (Pascopyrum smithii) - PASM	Grass	Western Wheatgrass (Pascopyrum smithii) - PASM
31	Grass	Western Wheatgrass (Pascopyrum smithii) - PASM	Unvegetated	Litter
32	Grass	Western Wheatgrass (Pascopyrum smithii) - PASM	Unvegetated	Litter
33	Noxious List C	Downy brome (Bromus tectorum) - BRTE	Undesirable	Alyssum (Alyssum simplex) - ALSI8
34	Grass	Slender wheatgrass (Elymus trachycaulus) - ELTR7	Unvegetated	Litter
35	Noxious List C	Downy brome (Bromus tectorum) - BRTE	Noxious List C	Downy brome (Bromus tectorum) - BRTE
36	Grass	Western Wheatgrass (Pascopyrum smithii) - PASM	Grass	Western Wheatgrass (Pascopyrum smithii) - PASM
37	Noxious List C	Downy brome (Bromus tectorum) - BRTE	Noxious List C	Downy brome (Bromus tectorum) - BRTE
38	Shrub	Broom snakeweed (Gutierrezia sarothrae) - GUSA2	Unvegetated	Bare Ground
39	Grass	Western Wheatgrass (Pascopyrum smithii) - PASM	Noxious List C	Downy brome (Bromus tectorum) - BRTE
40	Grass	Western Wheatgrass (Pascopyrum smithii) - PASM	Unvegetated	Litter
41	Noxious List C	Downy brome (Bromus tectorum) - BRTE	Unvegetated	Litter
42	Grass	Western Wheatgrass (Pascopyrum smithii) - PASM	Grass	Western Wheatgrass (Pascopyrum smithii) - PASM
43	Noxious List C	Downy brome (Bromus tectorum) - BRTE	Noxious List C	Downy brome (Bromus tectorum) - BRTE
44	Noxious List C	Downy brome (Bromus tectorum) - BRTE	Noxious List C	Downy brome (Bromus tectorum) - BRTE
45	Shrub	Broom snakeweed (Gutierrezia sarothrae) - GUSA2	Undesirable	Alyssum (Alyssum simplex) - ALSI8
46	Noxious List C	Downy brome (Bromus tectorum) - BRTE	Undesirable	Alyssum (Alyssum simplex) - ALSI8
47	Noxious List C	Downy brome (Bromus tectorum) - BRTE	Noxious List C	Downy brome (Bromus tectorum) - BRTE
48	Noxious List C	Downy brome (Bromus tectorum) - BRTE	Unvegetated	Rock
49	Forb	Scarlet globemallow (Sphaeralcea coccinea) - SPCO	Unvegetated	Litter
50	Shrub	Broom snakeweed (Gutierrezia sarothrae) - GUSA2	Forb	Scarlet globemallow (Sphaeralcea coccinea) - SPCO

Client Caerus Oil and Gas, Inc.
 Operator Location Information D11 799
 Assessment Date 6/10/2024
 Inspector Name Alex Slorby
 Transect Length (m) 75

Reference Transect 1

Point #	Cover Type - Foliar	Species - Foliar	Cover Type - Basal	Species - Basal
1	Noxious List C	Downy brome (Bromus tectorum) - BRTE	Forb	Spiny phlox (Phlox hoodii)
2	Noxious List C	Downy brome (Bromus tectorum) - BRTE	Unvegetated	Litter
3	Noxious List C	Downy brome (Bromus tectorum) - BRTE	Forb	Spiny phlox (Phlox hoodii)
4	Noxious List C	Downy brome (Bromus tectorum) - BRTE	Unvegetated	Litter
5	Undesirable	Tumblemustard (Sisymbrium altissimum) - SIAL2	Unvegetated	Litter
6	Undesirable	Tumblemustard (Sisymbrium altissimum) - SIAL2	Undesirable	Tumblemustard (Sisymbrium altissimum) - SIAL2
7	Shrub	Gardners saltbush (Atriplex gardneri) - ATGA	Shrub	Gardners saltbush (Atriplex gardneri) - ATGA
8	Unvegetated	Bare Ground	Unvegetated	Bare Ground
9	Noxious List C	Downy brome (Bromus tectorum) - BRTE	Noxious List C	Downy brome (Bromus tectorum) - BRTE
10	Forb	Woodyaster (Xylorhiza Nutt.) - XYLOR	Forb	Spiny phlox (Phlox hoodii)
11	Noxious List C	Downy brome (Bromus tectorum) - BRTE	Noxious List C	Downy brome (Bromus tectorum) - BRTE
12	Grass	Crested wheatgrass (Agropyron cristatum) - AGCR	Noxious List C	Downy brome (Bromus tectorum) - BRTE
13	Unvegetated	Litter	Unvegetated	Litter
14	Grass	Needle and thread (Hesperostipa comata) - HECO26	Noxious List C	Downy brome (Bromus tectorum) - BRTE
15	Grass	Needle and thread (Hesperostipa comata) - HECO26	Grass	Needle and thread (Hesperostipa comata) - HECO26
16	Grass	Slender wheatgrass (Elymus trachycaulus) - ELTR7	Grass	Slender wheatgrass (Elymus trachycaulus) - ELTR7
17	Noxious List C	Downy brome (Bromus tectorum) - BRTE	Unvegetated	Litter
18	Grass	Slender wheatgrass (Elymus trachycaulus) - ELTR7	Undesirable	Alyssum (Alyssum simplex) - ALSI8
19	Shrub	Woods rose (Rosa woodsii) - ROWO	Shrub	Woods rose (Rosa woodsii) - ROWO
20	Grass	Crested wheatgrass (Agropyron cristatum) - AGCR	Unvegetated	Litter
21	Forb	Woodyaster (Xylorhiza Nutt.) - XYLOR	Forb	Woodyaster (Xylorhiza Nutt.) - XYLOR
22	Noxious List C	Downy brome (Bromus tectorum) - BRTE	Forb	Spiny phlox (Phlox hoodii)
23	Shrub	Gardners saltbush (Atriplex gardneri) - ATGA	Shrub	Gardners saltbush (Atriplex gardneri) - ATGA
24	Shrub	Broom snakeweed (Gutierrezia sarothrae) - GUSA2	Shrub	Broom snakeweed (Gutierrezia sarothrae) - GUSA2
25	Noxious List C	Downy brome (Bromus tectorum) - BRTE	Unvegetated	Bare Ground
26	Forb	Bluestem Penstemon (Penstemon cyanocaulis) - PECY4	Shrub	Woods rose (Rosa woodsii) - ROWO
27	Shrub	Gardners saltbush (Atriplex gardneri) - ATGA	Noxious List C	Downy brome (Bromus tectorum) - BRTE
28	Shrub	Gardners saltbush (Atriplex gardneri) - ATGA	Unvegetated	Litter
29	Forb	Rush Skeletonplant (Lygodesmia juncea) - LYJU	Undesirable	Alyssum (Alyssum simplex) - ALSI8
30	Shrub	Broom snakeweed (Gutierrezia sarothrae) - GUSA2	Unvegetated	Litter
31	Shrub	Gardners saltbush (Atriplex gardneri) - ATGA	Unvegetated	Litter
32	Noxious List C	Downy brome (Bromus tectorum) - BRTE	Undesirable	Alyssum (Alyssum simplex) - ALSI8
33	Noxious List C	Downy brome (Bromus tectorum) - BRTE	Unvegetated	Litter
34	Undesirable	Alyssum (Alyssum simplex) - ALSI8	Unvegetated	Litter
35	Shrub	Gardners saltbush (Atriplex gardneri) - ATGA	Unvegetated	Litter
36	Grass	Needle and thread (Hesperostipa comata) - HECO26	Unvegetated	Litter
37	Noxious List C	Downy brome (Bromus tectorum) - BRTE	Grass	Needle and thread (Hesperostipa comata) - HECO26
38	Unvegetated	Litter	Unvegetated	Litter
39	Grass	Slender wheatgrass (Elymus trachycaulus) - ELTR7	Grass	Slender wheatgrass (Elymus trachycaulus) - ELTR7
40	Forb	Woodyaster (Xylorhiza Nutt.) - XYLOR	Forb	Woodyaster (Xylorhiza Nutt.) - XYLOR
41	Grass	Slender wheatgrass (Elymus trachycaulus) - ELTR7	Unvegetated	Litter
42	Grass	Needle and thread (Hesperostipa comata) - HECO26	Unvegetated	Litter
43	Grass	Slender wheatgrass (Elymus trachycaulus) - ELTR7	Unvegetated	Litter
44	Grass	Slender wheatgrass (Elymus trachycaulus) - ELTR7	Unvegetated	Litter
45	Grass	Western Wheatgrass (Pascopyrum smithii) - PASM	Unvegetated	Litter
46	Shrub	Gardners saltbush (Atriplex gardneri) - ATGA	Grass	Needle and thread (Hesperostipa comata) - HECO26
47	Shrub	Gardners saltbush (Atriplex gardneri) - ATGA	Noxious List C	Downy brome (Bromus tectorum) - BRTE
48	Forb	Scarlet globemallow (Sphaeralcea coccinea) - SPCO	Unvegetated	Litter
49	Grass	Slender wheatgrass (Elymus trachycaulus) - ELTR7	Unvegetated	Litter
50	Forb	Woodyaster (Xylorhiza Nutt.) - XYLOR	Forb	Woodyaster (Xylorhiza Nutt.) - XYLOR
51	Unvegetated	Bare Ground	Unvegetated	Bare Ground
52	Noxious List C	Downy brome (Bromus tectorum) - BRTE	Unvegetated	Litter
53	Noxious List C	Downy brome (Bromus tectorum) - BRTE	Shrub	Gardners saltbush (Atriplex gardneri) - ATGA
54	Noxious List C	Downy brome (Bromus tectorum) - BRTE	Noxious List C	Downy brome (Bromus tectorum) - BRTE
55	Noxious List C	Downy brome (Bromus tectorum) - BRTE	Unvegetated	Litter
56	Grass	Crested wheatgrass (Agropyron cristatum) - AGCR	Forb	Scarlet globemallow (Sphaeralcea coccinea) - SPCO
57	Grass	Slender wheatgrass (Elymus trachycaulus) - ELTR7	Unvegetated	Litter
58	Noxious List C	Downy brome (Bromus tectorum) - BRTE	Grass	Slender wheatgrass (Elymus trachycaulus) - ELTR7
59	Noxious List C	Downy brome (Bromus tectorum) - BRTE	Unvegetated	Litter
60	Shrub	Gardners saltbush (Atriplex gardneri) - ATGA	Grass	Needle and thread (Hesperostipa comata) - HECO26
61	Shrub	Gardners saltbush (Atriplex gardneri) - ATGA	Grass	Slender wheatgrass (Elymus trachycaulus) - ELTR7
62	Grass	Slender wheatgrass (Elymus trachycaulus) - ELTR7	Undesirable	Alyssum (Alyssum simplex) - ALSI8
63	Shrub	Gardners saltbush (Atriplex gardneri) - ATGA	Shrub	Gardners saltbush (Atriplex gardneri) - ATGA
64	Noxious List C	Downy brome (Bromus tectorum) - BRTE	Undesirable	Alyssum (Alyssum simplex) - ALSI8
65	Noxious List C	Downy brome (Bromus tectorum) - BRTE	Noxious List C	Downy brome (Bromus tectorum) - BRTE
66	Noxious List C	Downy brome (Bromus tectorum) - BRTE	Unvegetated	Litter
67	Shrub	Gardners saltbush (Atriplex gardneri) - ATGA	Shrub	Gardners saltbush (Atriplex gardneri) - ATGA
68	Shrub	Gardners saltbush (Atriplex gardneri) - ATGA	Noxious List C	Downy brome (Bromus tectorum) - BRTE
69	Noxious List C	Downy brome (Bromus tectorum) - BRTE	Noxious List C	Downy brome (Bromus tectorum) - BRTE
70	Undesirable	Tumblemustard (Sisymbrium altissimum) - SIAL2	Noxious List C	Downy brome (Bromus tectorum) - BRTE
71	Noxious List C	Downy brome (Bromus tectorum) - BRTE	Noxious List C	Downy brome (Bromus tectorum) - BRTE
72	Shrub	Woods rose (Rosa woodsii) - ROWO	Noxious List C	Downy brome (Bromus tectorum) - BRTE
73	Shrub	Gardners saltbush (Atriplex gardneri) - ATGA	Noxious List C	Downy brome (Bromus tectorum) - BRTE
74	Shrub	Gardners saltbush (Atriplex gardneri) - ATGA	Unvegetated	Litter
75	Forb	Woodyaster (Xylorhiza Nutt.) - XYLOR	Forb	Woodyaster (Xylorhiza Nutt.) - XYLOR

Client Caerus Oil and Gas, Inc.
 Operator Location Information D11 799
 Assessment Date 6/10/2024
 Inspector Name Alex Slorby
 Transect Length (m) 75

Reference Transect 2

Point #	Cover Type - Foliar	Species - Foliar	Cover Type - Basal Species - Basal
1	Grass	Slender wheatgrass (Elymus trachycaulus) - ELTR7	Grass Slender wheatgrass (Elymus trachycaulus) - ELTR7
2	Grass	Slender wheatgrass (Elymus trachycaulus) - ELTR7	Undesirable Alyssum (Alyssum simplex) - ALSI8
3	Grass	Needle and thread (Hesperostipa comata) - HECO26	Grass Slender wheatgrass (Elymus trachycaulus) - ELTR7
4	Grass	Needle and thread (Hesperostipa comata) - HECO26	Grass Needle and thread (Hesperostipa comata) - HECO26
5	Grass	Needle and thread (Hesperostipa comata) - HECO26	Noxious List C Downy brome (Bromus tectorum) - BRTE
6	Noxious List C	Downy brome (Bromus tectorum) - BRTE	Unvegetated Litter
7	Undesirable	Tumblemustard (Sisymbrium altissimum) - SIAL2	Noxious List C Downy brome (Bromus tectorum) - BRTE
8	Grass	Needle and thread (Hesperostipa comata) - HECO26	Unvegetated Litter
9	Grass	Crested wheatgrass (Agropyron cristatum) - AGCR	Unvegetated Litter
10	Grass	Needle and thread (Hesperostipa comata) - HECO26	Noxious List C Downy brome (Bromus tectorum) - BRTE
11	Noxious List C	Downy brome (Bromus tectorum) - BRTE	Unvegetated Litter
12	Grass	Needle and thread (Hesperostipa comata) - HECO26	Grass Needle and thread (Hesperostipa comata) - HECO26
13	Forb	Scarlet globemallow (Sphaeralcea coccinea) - SPCO	Forb Scarlet globemallow (Sphaeralcea coccinea) - SPCO
14	Grass	Needle and thread (Hesperostipa comata) - HECO26	Grass Needle and thread (Hesperostipa comata) - HECO26
15	Noxious List C	Downy brome (Bromus tectorum) - BRTE	Unvegetated Litter
16	Grass	Slender wheatgrass (Elymus trachycaulus) - ELTR7	Unvegetated Litter
17	Noxious List C	Downy brome (Bromus tectorum) - BRTE	Undesirable Alyssum (Alyssum simplex) - ALSI8
18	Grass	Western Wheatgrass (Pascopyrum smithii) - PASM	Unvegetated Litter
19	Grass	Needle and thread (Hesperostipa comata) - HECO26	Grass Needle and thread (Hesperostipa comata) - HECO26
20	Grass	Slender wheatgrass (Elymus trachycaulus) - ELTR7	Grass Slender wheatgrass (Elymus trachycaulus) - ELTR7
21	Grass	Slender wheatgrass (Elymus trachycaulus) - ELTR7	Grass Slender wheatgrass (Elymus trachycaulus) - ELTR7
22	Grass	Slender wheatgrass (Elymus trachycaulus) - ELTR7	Grass Slender wheatgrass (Elymus trachycaulus) - ELTR7
23	Undesirable	Alyssum (Alyssum simplex) - ALSI8	Undesirable Alyssum (Alyssum simplex) - ALSI8
24	Grass	Slender wheatgrass (Elymus trachycaulus) - ELTR7	Grass Slender wheatgrass (Elymus trachycaulus) - ELTR7
25	Grass	Slender wheatgrass (Elymus trachycaulus) - ELTR7	Grass Slender wheatgrass (Elymus trachycaulus) - ELTR7
26	Shrub	Broom snakeweed (Gutierrezia sarothrae) - GUSA2	Unvegetated Bare Ground
27	Unvegetated	Bare Ground	Unvegetated Bare Ground
28	Noxious List C	Downy brome (Bromus tectorum) - BRTE	Noxious List C Downy brome (Bromus tectorum) - BRTE
29	Noxious List C	Downy brome (Bromus tectorum) - BRTE	Unvegetated Litter
30	Undesirable	Alyssum (Alyssum simplex) - ALSI8	Undesirable Alyssum (Alyssum simplex) - ALSI8
31	Shrub	Gardners saltbush (Atriplex gardneri) - ATGA	Noxious List C Downy brome (Bromus tectorum) - BRTE
32	Noxious List C	Downy brome (Bromus tectorum) - BRTE	Undesirable Alyssum (Alyssum simplex) - ALSI8
33	Grass	Slender wheatgrass (Elymus trachycaulus) - ELTR7	Noxious List C Downy brome (Bromus tectorum) - BRTE
34	Grass	Slender wheatgrass (Elymus trachycaulus) - ELTR7	Grass Slender wheatgrass (Elymus trachycaulus) - ELTR7
35	Grass	Slender wheatgrass (Elymus trachycaulus) - ELTR7	Grass Slender wheatgrass (Elymus trachycaulus) - ELTR7
36	Grass	Slender wheatgrass (Elymus trachycaulus) - ELTR7	Grass Slender wheatgrass (Elymus trachycaulus) - ELTR7
37	Unvegetated	Litter	Unvegetated Litter
38	Grass	Needle and thread (Hesperostipa comata) - HECO26	Grass Needle and thread (Hesperostipa comata) - HECO26
39	Grass	Needle and thread (Hesperostipa comata) - HECO26	Grass Needle and thread (Hesperostipa comata) - HECO26
40	Grass	Slender wheatgrass (Elymus trachycaulus) - ELTR7	Grass Slender wheatgrass (Elymus trachycaulus) - ELTR7
41	Grass	Slender wheatgrass (Elymus trachycaulus) - ELTR7	Grass Slender wheatgrass (Elymus trachycaulus) - ELTR7
42	Grass	Slender wheatgrass (Elymus trachycaulus) - ELTR7	Unvegetated Bare Ground
43	Grass	Slender wheatgrass (Elymus trachycaulus) - ELTR7	Unvegetated Litter
44	Grass	Slender wheatgrass (Elymus trachycaulus) - ELTR7	Unvegetated Litter
45	Grass	Slender wheatgrass (Elymus trachycaulus) - ELTR7	Unvegetated Bare Ground
46	Unvegetated	Litter	Unvegetated Litter
47	Shrub	Broom snakeweed (Gutierrezia sarothrae) - GUSA2	Shrub Broom snakeweed (Gutierrezia sarothrae) - GUSA2
48	Noxious List C	Downy brome (Bromus tectorum) - BRTE	Noxious List C Downy brome (Bromus tectorum) - BRTE
49	Unvegetated	Bare Ground	Unvegetated Bare Ground
50	Grass	Slender wheatgrass (Elymus trachycaulus) - ELTR7	Grass Slender wheatgrass (Elymus trachycaulus) - ELTR7
51	Grass	Slender wheatgrass (Elymus trachycaulus) - ELTR7	Grass Slender wheatgrass (Elymus trachycaulus) - ELTR7
52	Grass	Slender wheatgrass (Elymus trachycaulus) - ELTR7	Unvegetated Litter
53	Unvegetated	Litter	Unvegetated Litter
54	Grass	Slender wheatgrass (Elymus trachycaulus) - ELTR7	Noxious List C Downy brome (Bromus tectorum) - BRTE
55	Grass	Slender wheatgrass (Elymus trachycaulus) - ELTR7	Unvegetated Litter
56	Noxious List C	Downy brome (Bromus tectorum) - BRTE	Grass Western Wheatgrass (Pascopyrum smithii) - PASM
57	Grass	Slender wheatgrass (Elymus trachycaulus) - ELTR7	Grass Slender wheatgrass (Elymus trachycaulus) - ELTR7
58	Grass	Slender wheatgrass (Elymus trachycaulus) - ELTR7	Unvegetated Bare Ground
59	Grass	Slender wheatgrass (Elymus trachycaulus) - ELTR7	Grass Slender wheatgrass (Elymus trachycaulus) - ELTR7
60	Grass	Slender wheatgrass (Elymus trachycaulus) - ELTR7	Unvegetated Litter
61	Noxious List C	Downy brome (Bromus tectorum) - BRTE	Unvegetated Litter
62	Grass	Needle and thread (Hesperostipa comata) - HECO26	Grass Slender wheatgrass (Elymus trachycaulus) - ELTR7
63	Grass	Slender wheatgrass (Elymus trachycaulus) - ELTR7	Noxious List C Downy brome (Bromus tectorum) - BRTE
64	Grass	Needle and thread (Hesperostipa comata) - HECO26	Grass Needle and thread (Hesperostipa comata) - HECO26
65	Noxious List C	Downy brome (Bromus tectorum) - BRTE	Noxious List C Downy brome (Bromus tectorum) - BRTE
66	Noxious List C	Downy brome (Bromus tectorum) - BRTE	Grass Slender wheatgrass (Elymus trachycaulus) - ELTR7
67	Noxious List C	Downy brome (Bromus tectorum) - BRTE	Unvegetated Litter
68	Grass	Needle and thread (Hesperostipa comata) - HECO26	Grass Needle and thread (Hesperostipa comata) - HECO26
69	Grass	Needle and thread (Hesperostipa comata) - HECO26	Unvegetated Litter
70	Unvegetated	Litter	Unvegetated Litter
71	Noxious List C	Downy brome (Bromus tectorum) - BRTE	Unvegetated Litter
72	Noxious List C	Downy brome (Bromus tectorum) - BRTE	Noxious List C Downy brome (Bromus tectorum) - BRTE
73	Forb	Scarlet globemallow (Sphaeralcea coccinea) - SPCO	Forb Scarlet globemallow (Sphaeralcea coccinea) - SPCO
74	Grass	Slender wheatgrass (Elymus trachycaulus) - ELTR7	Unvegetated Bare Ground
75	Forb	Scarlet globemallow (Sphaeralcea coccinea) - SPCO	Unvegetated Litter

Quantitative Vegetation Survey - Photo Log

Operator Location Name D11 799
Location Type Well Site
Event ID COG240604-QVS0001

Directional Photos

Photo Point 1

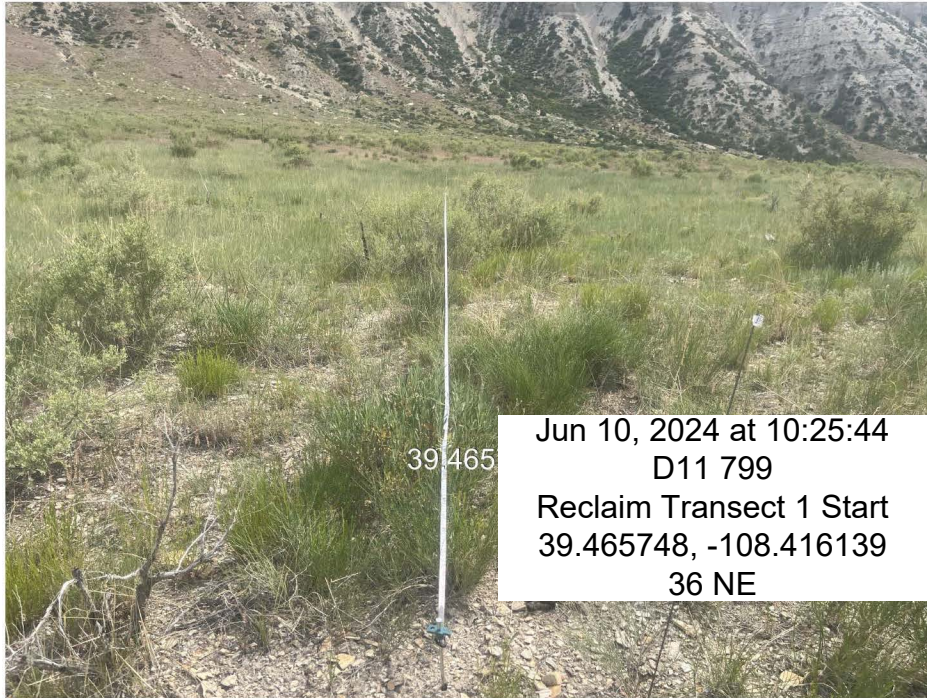
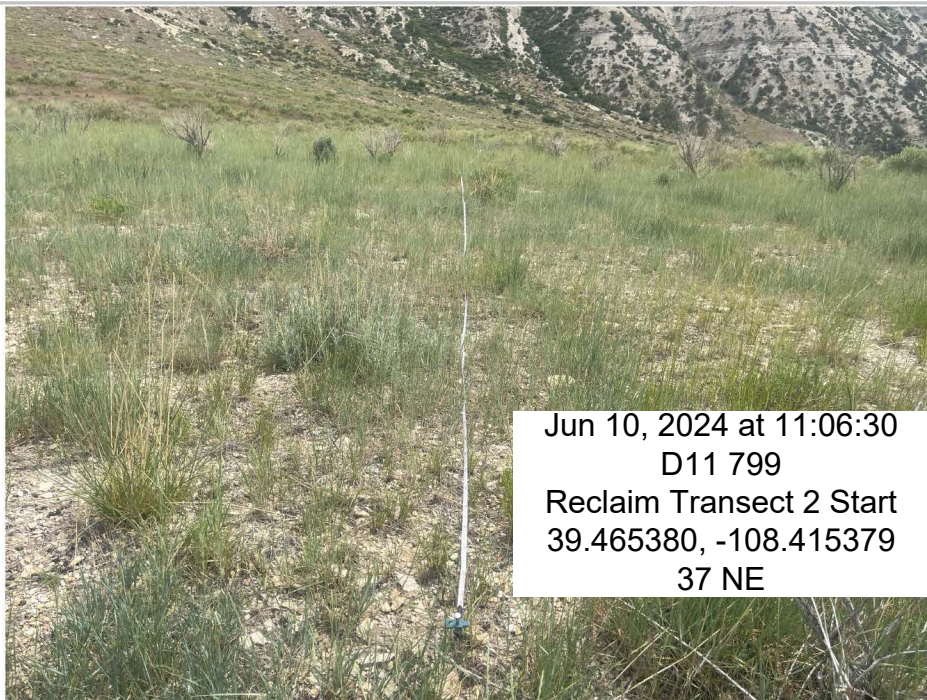


Photo Point 2



NOTE: Geographic coordinate were collected with a sub-meter accurate GPS unit.

Quantitative Vegetation Survey - Photo Log

Operator Location Name D11 799
Location Type Well Site
Event ID COG240604-QVS0001

Directional Photos

Photo Point 3

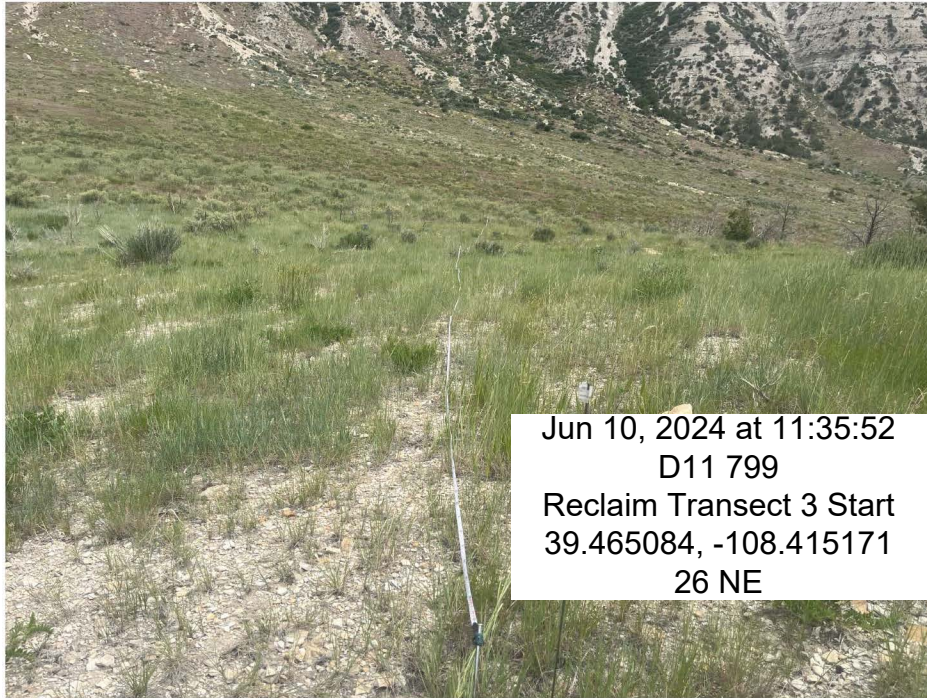
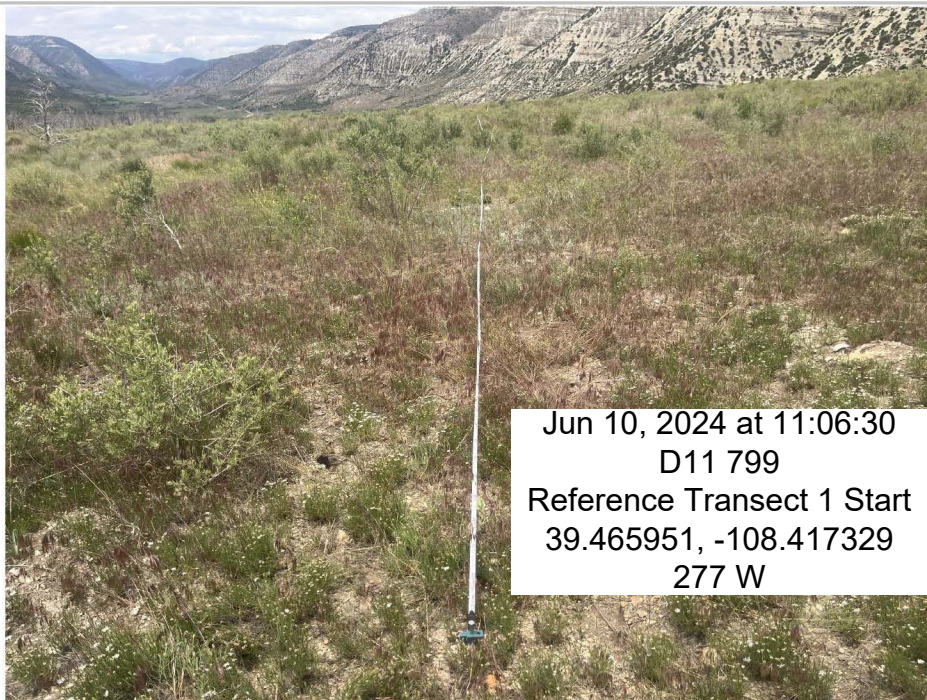


Photo Point 4



NOTE: Geographic coordinate were collected with a sub-meter accurate GPS unit.

Quantitative Vegetation Survey - Photo Log

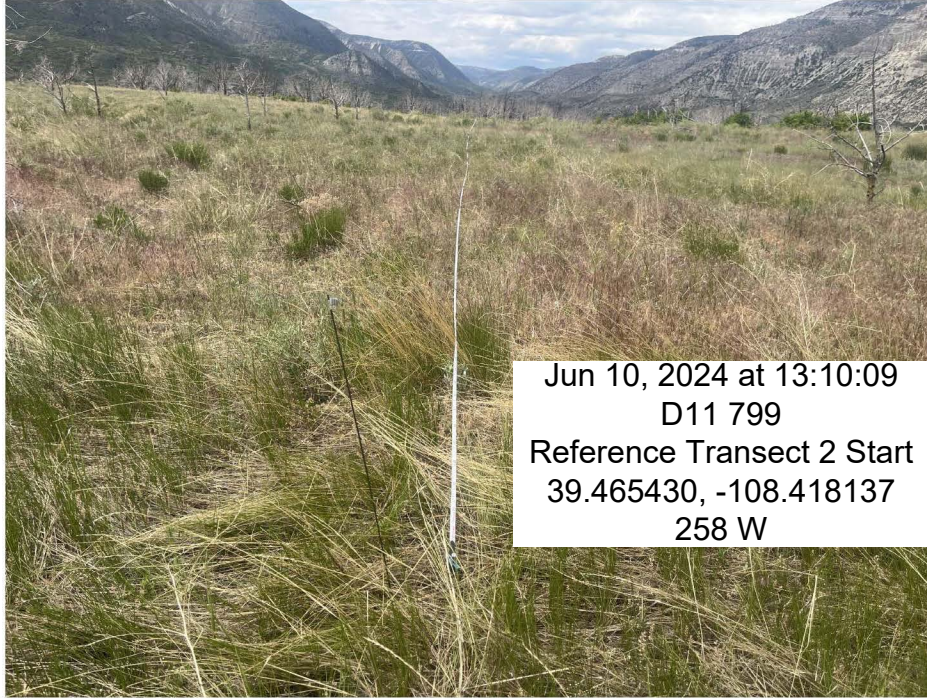
Operator Location Name D11 799

Location Type Well Site

Event ID COG240604-QVS0001

Directional Photos

Photo Point 5



NOTE: Geographic coordinate were collected with a sub-meter accurate GPS unit.