

Kathy Vertiz
Contract EHS Specialist
Caerus Oil and Gas LLC (10456)
143 Diamond Ave.
Parachute, CO 81635
kvertiz@caerusoilandgas.com
(delivered electronically)

August 7, 2024

Final Reclamation – Quantitative Vegetation Survey Report

ECMC Location Name (ID)	BUERGER-67S92W/15NENE(324226)
Operator Location Name	A15
Legal Description	NENE Sec. 15 T7S-R92W
API	05-045-09150
Geographic Coordinates (WGS84)	39.451010 / -107.643860
Surface Ownership	Private
County	Garfield

Introduction

Confluence Compliance Companies, LLC (Confluence) is presenting this report to Caerus Oil and Gas, LLC (Caerus) documenting the results of a quantitative vegetation survey (survey) completed at the former A15 well pad (324226) (Location). The survey was conducted to evaluate the final reclamation status of reclaimed surfaces (reclaim) by comparing vegetation cover and composition with the selected reference area(s) (reference). The survey is used alongside a site evaluation to determine if the location meets reclamation standards for applicable regulatory agencies. Included with this report is a review of the methodologies used to evaluate the reclaimed surface, results of those evaluations, and recommendations for how to proceed with this information. Attached are figures illustrating the project location, survey transects, and reclaim and reference areas, along with summaries of collected vegetation data and photo logs.

Background

The Location is on private surface approximately 9.31 miles southeast of Rifle, Colorado. The Location historically contained a single oil and gas well that was plugged and abandoned (P&A) on June 5, 2015 (Form 6 Document: 400893202). The historical well pad surface disturbance was approximately 4.16 acres. The Location was reclaimed in 2015 and has received at least annual monitoring of vegetation since then. In 2024, a Caerus Reclamation Specialist noted comparable vegetation in the reclaim and reference at the Location and recommended a quantitative vegetation survey.

Methods

Any reclaim must meet standards applicable to any regulatory jurisdictions the Location is subject to. This methodology was developed to meet state and federal requirements for upstream oil and gas locations in the State of Colorado without additional municipal or county requirements. Minimum requirements under this scope specify that reclaim species composition is at least 80% comparable to undisturbed reference areas. These requirements are detailed in the Colorado Energy and Carbon

Management Commission (ECMC) Rule 1004.d [1] for final reclamation, and final abandonment requirements set forth in the Department of Interior (DOI) 43 CFR Part 3160 [2]. To evaluate if the Location meets these regulatory requirements, Confluence selected a line-point intercept vegetation cover survey method with plot-level species inventories from the Monitoring Manual for Grassland, Shrubland and Savanna Ecosystems (Volume 2) [3].

Prior to conducting the survey, a desktop review of available records and historical aerial imagery was performed to define and map all portions of the historical surface disturbance and identify and map comparable reference areas. Wherever feasible, reference area(s) were selected to ensure that comparative assessments occur in areas not previously impacted by oil and gas operations or other surface disturbing activities, have similar slope and aspect to the reclaimed surface, and are to the extent practicable, reflective of pre-disturbance conditions or desired final ecological condition for the reclaimed surface. When on-site, applicability of the reclaim and reference transect locations selected during the desktop review was confirmed based on observed field conditions. Transect locations were selected to best represent the vegetative cover and species composition of the respective areas, and to limit subjectivity of field personnel.

Per the 2023 BLM Oil and Gas Reclamation Monitoring Protocols, a minimum of 150 survey points is required in both reclaim and reference area(s). Additional reclaim transects are required when the historical access road, pipeline right-of-way, or other linear feature is greater than 0.25 miles. If linear features greater than 0.25 miles are present, one additional reclaim transect is collected for every 0.25-mile feature. Total transect length must be at least one quarter of the length of the historical surface disturbance perimeter to ensure collected data were representative of overall Location conditions.

Foliar and basal cover, along with non-vegetated and noxious weed occurrences, were documented at each survey point. Survey point data were documented in the attached Transect Detail – Field Data Tables. Photographs were collected throughout the survey to document site conditions and depict transects. These photos are included in the Vegetation Assessment Photo Log. The Reclamation Survey Site Diagram illustrates transect locations as well as photo collection points.

Noxious weeds, as defined by the Colorado Department of Agriculture (CDA), were excluded from the percent of reference vegetative coverage calculations, per ECMC Rule 1004.d. Undesirable species, as defined by the United States Department of Agriculture (USDA) Natural Resources Conservation Service (NRCS) and other information communications, were also excluded to ensure reclamation vegetative composition meets stakeholder standards. All other vegetation, was identified by growth habit (grass, forb, shrub) and was considered desirable vegetative cover. Noxious, undesirable, and desirable species observed during the survey are quantified in the attached summary of field data.

Results

The survey was conducted on June 17, 2024. Based on the size of the reclaimed well pad and survey transect design requirements, three 50-point survey transects were established at the historical well pad, and two 75-point survey transects were established in the adjacent reference area. Findings of the survey are presented in the table below. Additional detail on survey results can be found in the attached summary of field data, relative foliar species abundance tables, and field data tables.



Reclaim Vegetation Cover	Cover (%)	Reference Vegetation Cover	Cover (%)
Desirable Foliar Cover	42.7	Desirable Foliar Cover	43.3
Undesirable Foliar Cover	12.0	Undesirable Foliar Cover	2.7
Noxious Weed Foliar Cover	6.7	Noxious Weed Foliar Cover	10.0
Desirable vegetation comparison (reclaim/reference)			98%

Analysis and Recommendations

Desirable vegetation cover in the reclaim is 98% of reference, which meets the 80% threshold for final reclamation vegetation establishment as specified by the ECMC. Based on these results and comparable occurrences of noxious weeds and undesirable species in both areas, Confluence recommends submittal of a Final Abandonment Notice (FAN) and Form 4 (Final Reclamation Completion Notice) to document successful completion of final reclamation and notify regulators that the site is ready for final reclamation inspections.

Confluence appreciates the opportunity to provide support for your vegetation monitoring program. If you have any questions about our methodology, the results of this assessment, or our conclusions, please contact me.

Respectfully,



Chris Hines
 Reclamation Specialist/CEO
 970-261-1127 (M)
chris.hines@confluence-cc.com

Attachments

- Topographic Location Map
- QVS Site Diagram
- Summary of Field Data
- Species Abundance Tables
- Transect Detail – Field Data Tables
- Vegetation Assessment Photo Log

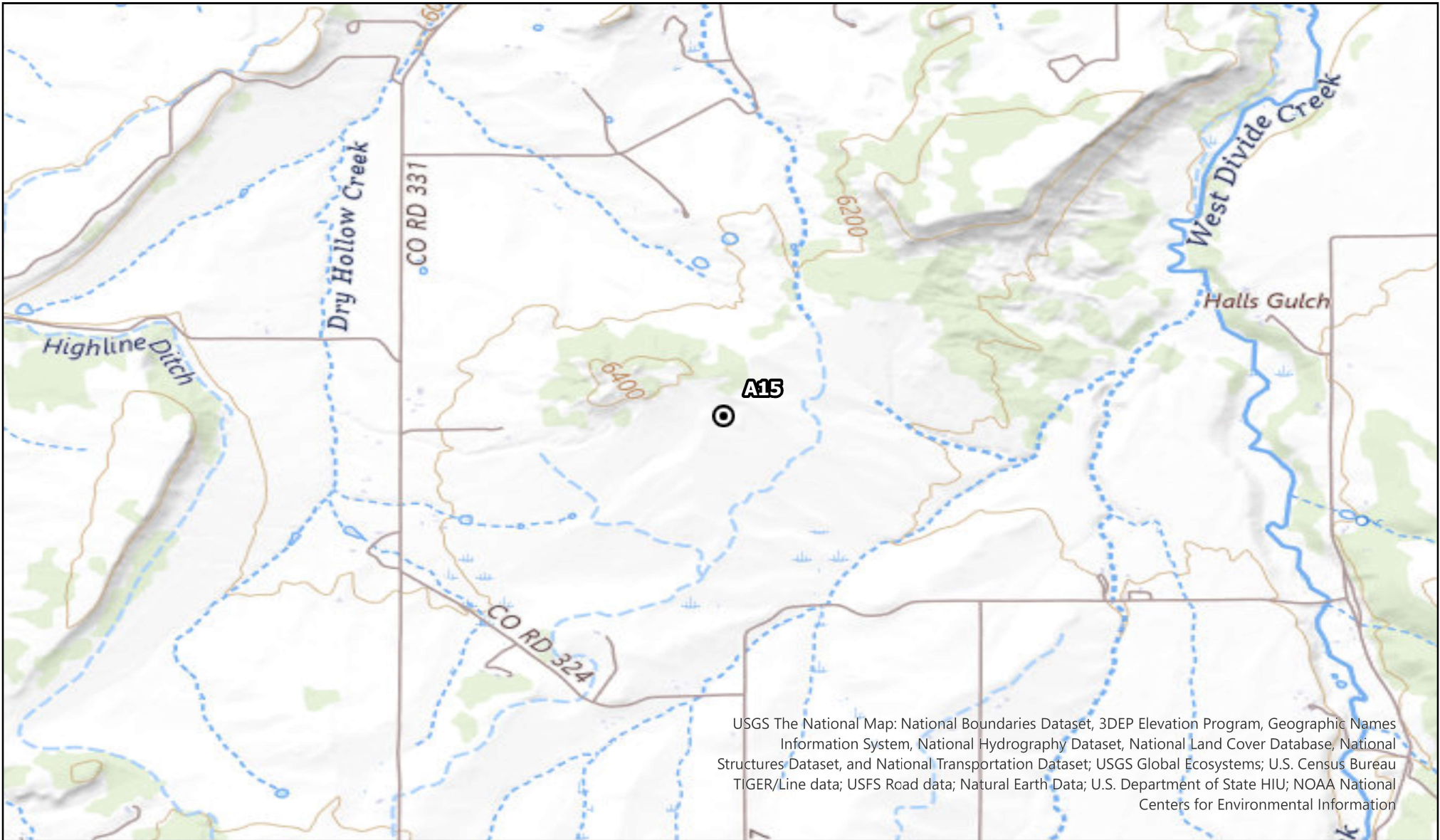


References

1. Colorado Department of Natural Resources, Energy and Carbon Management Commission. “Rules and Regulations”, April 30, 2022, [Complete Rules \(100 - 1200 Series\) \(state.co.us\)](#).
2. United States Department of the Interior, Bureau of Land Management. “43 CFR Subpart 3160 - Onshore Oil and Gas Operations: General”, 1983, [eCFR :: 43 CFR Part 3160 -- Onshore Oil and Gas Operations](#).
3. United States Department of the Interior, Bureau of Land Management. “Surface Operating Standards and Guidelines for Oil and Gas Exploration and Development – The Gold Book”, 2007, [The Gold Book | Bureau of Land Management \(blm.gov\)](#).
4. Herrcik, Jeffrey E, et al. “Monitoring Manual for Grassland, Shrubland and Savanna Ecosystems.” Monitoring Manual, 2nd Edition, USDA - ARS Jornada Experimental Range, 2009, <https://aim.landscapetoolbox.org/wp-content/uploads/2015/08/Monitoring-Manual-Volume-II.pdf>.
5. Bureau of Land Management, Colorado River Valley Field Office and Grand Junction Field Office. “Oil and Gas Reclamation Monitoring Protocols, 2023”.

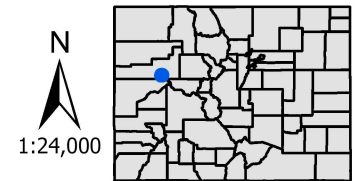
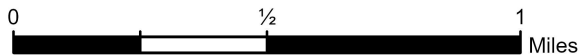


Topographic Location Map



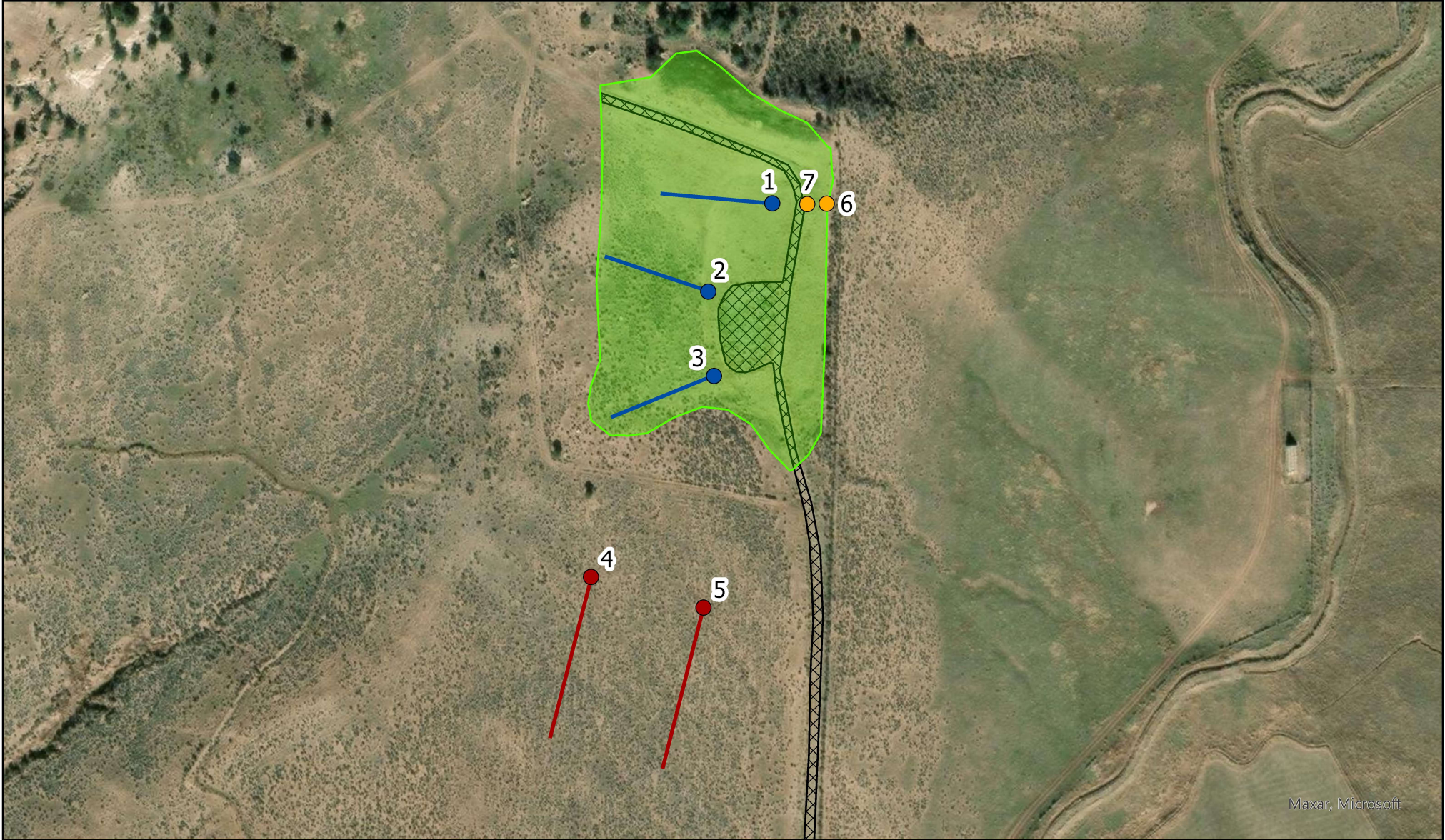
USGS The National Map: National Boundaries Dataset, 3DEP Elevation Program, Geographic Names Information System, National Hydrography Dataset, National Land Cover Database, National Structures Dataset, and National Transportation Dataset; USGS Global Ecosystems; U.S. Census Bureau TIGER/Line data; USFS Road data; Natural Earth Data; U.S. Department of State HIU; NOAA National Centers for Environmental Information

Caerus Oil and Gas LLC
A15 (Buerger 15-1D)
ECMC Location ID: 324226 | API: 05-045-09150
Lat/Long: 39.451063, -107.644164
Location: NENE 15 7S92W Garfield County



 **CONFLUENCE**
COMPLIANCE COMPANIES


Survey Diagram

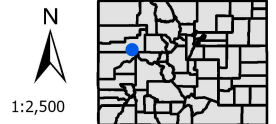


Maxar, Microsoft

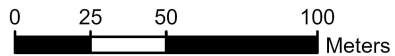
Caerus Oil and Gas LLC
A15 (Buerger 15-1D)
ECMC Location ID: 324226 | API: 05-045-09150
Lat/Long: 39.451063, -107.644164
Location: NENE 15 7S92W Garfield County

Legend

- Reclaim Transect Photo Point
- Reference Transect Photo Point
- Additional Photo Point
- Reclaim Transect
- Reference Transect
-  Variance Area
- Reclamation Area



1:2,500



Spatial data was collected using a handheld GPS unit with submeter accuracy. Illustration discrepancies may be present in this diagram due to the inherent limitations of data accuracy for both project data and the underlying aerial imagery. The position of illustrated data may have been manually adjusted to align with the aerial imagery in a manner more representative of field conditions for presentation purposes only.

Quantitative Vegetation Survey - Summary of Field Data

Client	Caerus Oil and Gas, Inc.	API(s)	
Operator Location	A15		05-045-09150
CCC Disturbance ID	COG240604.DIS0008		
ECMC Location ID	324226		
Reclamation Phase	Final Reclamation		
BLM Area	Private		
Latitude/Longitude	39.451063/-107.644164		
Assessment Date	6/17/2024		
Inspector Name	Alex Slorby		

The survey methodology employed by Confluence is the line-point intercept method with plot-level species inventories conducted in accordance with the Monitoring Manual for Grassland, Shrubland and Savanna Ecosystems. Vegetation cover data is collected along each transect. Foliar and basal cover, along with non-vegetated and noxious weed occurrences, are documented at each survey point. Transects are completed in the reclaim and reference areas. The desirable foliar cover (grasses, forbs, shrubs) in each survey transect area is calculated by summing the total number of foliar occurrences (#), excluding noxious weeds and undesirable species, and dividing by the total possible foliar occurrences in the transect. This is completed for both transects in the reclaim area and in the reference area. The resulting values from each transect in the respective areas are then averaged to surmise an overall coverage and/or composition for the location. For this location:

Reclaim Area Vegetation

Desirable Foliar Cover = 42.7%
 $[(22 + 11 + 31) / 150] * 100$

Reference Area Vegetation

Desirable Foliar Cover = 43.3%
 $[(18 + 2 + 45) / 150] * 100$

For the purposes of this assessment, undesirable foliar cover is defined as introduced and non-native to the lower 48 states by the USDA NRCS and is not considered beneficial for reclamation purposes. The undesirable foliar cover (%) in each survey transect area is calculated by summing the total number of undesirable foliar occurrences (#), excluding noxious weeds, and dividing by the total possible foliar occurrences in the transect. This is completed for both transects in the reclaim area and in the reference area. The resulting values from each transect in the respective areas are then averaged to surmise an overall coverage and/or composition for the location. For this location:

Noxious Weed/Undesirable Foliar Cover = 18.7%
 $[(18 + 10) / 150] * 100$

Noxious Weed/Undesirable Foliar Cover = 12.7%
 $[(4 + 15) / 150] * 100$

The percent of reference used to evaluate the reclamation area for compliance with ECMC Rule 1003.e(2) is calculated by dividing the averaged foliar cover (%) in the reclaim area by the averaged foliar cover (%) in the reference area. For this location:

Percent of Reference = 98%
 $42.7% / 43.3%$

Cover Type	Reclaim Transect(s) x 3		Reference Transect(s) x 2	
	#	Overall Cover	#	Overall Cover
Desirable Foliar Cover	64	42.7%	65	43.3%
Grass	22	14.7%	18	12.0%
Forb	11	7.3%	2	1.3%
Shrub	31	20.7%	45	30.0%
Desirable Basal Cover	25	16.7%	24	16.0%
Grass	11	7.3%	14	9.3%
Forb	7	4.7%	1	0.7%
Shrub	7	4.7%	9	6.0%
Undesirable Cover	31	20.7%	8	5.3%
Foliar	18	12.0%	4	2.7%
Basal	13	8.7%	4	2.7%
Unvegetated	58	38.7%	66	44.0%
Bare Ground	28	18.7%	24	16.0%
Litter	28	18.7%	42	28.0%
Rock	2	1.3%	0	0.0%
Other	0	0.0%	0	0.0%
Noxious Weeds Cover	14	9.3%	24	16.0%
Foliar	10	6.7%	15	10.0%
Basal	4	2.7%	9	6.0%
Foliar Quality Assurance Total	150	100%	150	100%

Reclaim Transect Global ID(s):
 33295855-4ba5-4c0b-a42e-cfedae70a182,
 3f1dc1c8-8d32-4e6b-a6e4-a933af1a70f3,
 6405bf21-5ec5-4df5-ba1b-379916fabfct.

Reference Transect Global ID(s):
 52d79af2-563c-44ec-a608-548e67971aca,
 ebd461a2-57aa-4032-8e96-b328165befc3.

Client Caerus Oil and Gas, Inc.
Operator Location A15
Assessment Date 6/17/2024
Inspector Name Alex Slorby

Transect Detail - Reclamation Area Observation Summary

Plant species indicated by red text include all State-listed noxious weeds and undesirable species identified as introduced and non-native to the lower 48 states by the USDA NRCS not considered beneficial for reclamation purposes.

Observation Summary				
Life Cycle	Foliar Occurrence	Foliar Cover	Basal Occurrence	Basal Cover
Annual	29	19%	19	13%
Perennial	63	42%	23	15%
Unvegetated	58	39%	108	72%
Grand Total	150	100%	150	100%

Life Cycle	Species Code	Scientific Name	Common Name	Cover Type	Foliar Occurrence	Foliar Cover	Basal Occurrence	Basal Cover
Annual	ALS18	<i>Alyssum simplex</i>	Alyssum	Undesirable	15	10%	11	7%
Annual	BRTE	<i>Bromus tectorum</i>	Downy brome	Noxious List C	6	4%	4	3%
Annual	KOSC	<i>Kochia scoparia</i>	Kochia	Undesirable	2	1%	2	1%
Annual	MEOF	<i>Melilotus officinalis</i>	Sweet clover	Forb	5	3%	2	1%
Annual	TRDU	<i>Tragopogon dubius</i>	Yellow salsify	Undesirable	1	1%	0	0%
NA	NA	NA	Bare Ground	Unvegetated	28	19%	46	31%
NA	NA	NA	Litter	Unvegetated	28	19%	60	40%
NA	NA	NA	Rock	Unvegetated	2	1%	2	1%
Perennial	ARTR2	<i>Artemisia tridentata</i>	Big Sagebrush	Shrub	9	6%	2	1%
Perennial	ELCA4	<i>Elymus canadensis</i>	Canada Wildrye	Grass	1	1%	0	0%
Perennial	ELTR7	<i>Elymus trachycaulus</i>	Slender wheatgrass	Grass	1	1%	0	0%
Perennial	ERNA10	<i>Ericameria nauseosa</i>	Rubber Rabbitbrush	Shrub	15	10%	1	1%
Perennial	GRSQ	<i>Grindelia squarrosa</i>	Curlycup gumweed	Forb	2	1%	1	1%
Perennial	GUSA2	<i>Gutierrezia sarothrae</i>	Broom snakeweed	Shrub	7	5%	4	3%
Perennial	MESA	<i>Medicago sativa</i>	Alfalfa	Forb	4	3%	4	3%
Perennial	PASM	<i>Pascopyrum smithii</i>	Western Wheatgrass	Grass	20	13%	11	7%
Perennial	POBU	<i>Poa bulbosa</i>	Bulbous bluegrass	Noxious List C	4	3%	0	0%

Client Caerus Oil and Gas, Inc.
Operator Location Reference location(s) for A15
Assessment Date 6/17/2024
Inspector Name Alex Slorby

Transect Detail - Reference Area Observation Summary

Plant species indicated by red text include all State-listed noxious weeds and undesirable species identified as introduced and non-native to the lower 48 states by the USDA NRCS not considered beneficial for reclamation purposes.

Observation Summary				
Life Cycle	Foliar Occurrence	Foliar Cover	Basal Occurrence	Basal Cover
Annual	5	3%	5	3%
Perennial	79	53%	32	21%
Unvegetated	66	44%	113	75%
Grand Total	150	100%	150	100%

Life Cycle	Species Code	Scientific Name	Common Name	Cover Type	Foliar Occurrence	Foliar Cover	Basal Occurrence	Basal Cover
Annual	ALS18	<i>Alyssum simplex</i>	Alyssum	Undesirable	4	3%	4	3%
Annual	BRTE	<i>Bromus tectorum</i>	Downy brome	Noxious List C	1	1%	1	1%
NA	NA	NA	Litter	Unvegetated	42	28%	78	52%
NA	NA	NA	Bare Ground	Unvegetated	24	16%	35	23%
Perennial	AGCR	<i>Agropyron cristatum</i>	Crested wheatgrass	Grass	1	1%	0	0%
Perennial	ARTR2	<i>Artemisia tridentata</i>	Big Sagebrush	Shrub	43	29%	9	6%
Perennial	GUSA2	<i>Gutierrezia sarothrae</i>	Broom snakeweed	Shrub	2	1%	0	0%
Perennial	Various	<i>Opuntia Spp.</i>	Prickly pear	Forb	1	1%	0	0%
Perennial	PASM	<i>Pascopyrum smithii</i>	Western Wheatgrass	Grass	17	11%	14	9%
Perennial	POBU	<i>Poa bulbosa</i>	Bulbous bluegrass	Noxious List C	14	9%	8	5%
Perennial	SPCO	<i>Sphaeralcea coccinea</i>	Scarlet globemallow	Forb	1	1%	1	1%

Client Caerus Oil and Gas, Inc.
 Operator Location Information A15
 Assessment Date 6/17/2024
 Inspector Name Alex Slorby
 Transect Length (m) 50

Reclaim Transect 1

Point #	Cover Type - Foliar	Species - Foliar	Cover Type - Basal	Species - Basal
1	Grass	Western Wheatgrass (Pascopyrum smithii) - PASM	Grass	Western Wheatgrass (Pascopyrum smithii) - PASM
2	Unvegetated	Bare Ground	Unvegetated	Bare Ground
3	Grass	Western Wheatgrass (Pascopyrum smithii) - PASM	Unvegetated	Bare Ground
4	Grass	Western Wheatgrass (Pascopyrum smithii) - PASM	Grass	Western Wheatgrass (Pascopyrum smithii) - PASM
5	Grass	Canada Wildrye (Elymus canadensis) - ELCA4	Unvegetated	Bare Ground
6	Unvegetated	Bare Ground	Unvegetated	Bare Ground
7	Grass	Western Wheatgrass (Pascopyrum smithii) - PASM	Unvegetated	Litter
8	Unvegetated	Bare Ground	Unvegetated	Bare Ground
9	Unvegetated	Bare Ground	Unvegetated	Bare Ground
10	Grass	Western Wheatgrass (Pascopyrum smithii) - PASM	Unvegetated	Bare Ground
11	Unvegetated	Bare Ground	Unvegetated	Bare Ground
12	Unvegetated	Bare Ground	Unvegetated	Bare Ground
13	Undesirable	Yellow salsify (Tragopogon dubius) - TRDU	Unvegetated	Bare Ground
14	Unvegetated	Bare Ground	Unvegetated	Bare Ground
15	Grass	Western Wheatgrass (Pascopyrum smithii) - PASM	Grass	Western Wheatgrass (Pascopyrum smithii) - PASM
16	Grass	Western Wheatgrass (Pascopyrum smithii) - PASM	Unvegetated	Bare Ground
17	Unvegetated	Bare Ground	Unvegetated	Bare Ground
18	Unvegetated	Bare Ground	Unvegetated	Bare Ground
19	Undesirable	Kochia (Kochia scoparia) - KOSC	Undesirable	Kochia (Kochia scoparia) - KOSC
20	Shrub	Rubber Rabbitbrush (Ericameria nauseosa) - ERNA10	Unvegetated	Bare Ground
21	Grass	Slender wheatgrass (Elymus trachycaulus) - ELTR7	Unvegetated	Bare Ground
22	Unvegetated	Bare Ground	Unvegetated	Bare Ground
23	Undesirable	Kochia (Kochia scoparia) - KOSC	Undesirable	Kochia (Kochia scoparia) - KOSC
24	Unvegetated	Bare Ground	Unvegetated	Bare Ground
25	Unvegetated	Bare Ground	Unvegetated	Bare Ground
26	Unvegetated	Bare Ground	Unvegetated	Bare Ground
27	Unvegetated	Litter	Unvegetated	Litter
28	Unvegetated	Bare Ground	Unvegetated	Bare Ground
29	Shrub	Broom snakeweed (Gutierrezia sarothrae) - GUSA2	Shrub	Broom snakeweed (Gutierrezia sarothrae) - GUSA2
30	Noxious List C	Downy brome (Bromus tectorum) - BRTE	Unvegetated	Bare Ground
31	Grass	Western Wheatgrass (Pascopyrum smithii) - PASM	Unvegetated	Bare Ground
32	Grass	Western Wheatgrass (Pascopyrum smithii) - PASM	Grass	Western Wheatgrass (Pascopyrum smithii) - PASM
33	Undesirable	Alyssum (Alyssum simplex) - ALSI8	Unvegetated	Bare Ground
34	Grass	Western Wheatgrass (Pascopyrum smithii) - PASM	Grass	Western Wheatgrass (Pascopyrum smithii) - PASM
35	Noxious List C	Downy brome (Bromus tectorum) - BRTE	Unvegetated	Bare Ground
36	Unvegetated	Rock	Unvegetated	Rock
37	Grass	Western Wheatgrass (Pascopyrum smithii) - PASM	Unvegetated	Litter
38	Unvegetated	Litter	Unvegetated	Litter
39	Undesirable	Alyssum (Alyssum simplex) - ALSI8	Unvegetated	Bare Ground
40	Grass	Western Wheatgrass (Pascopyrum smithii) - PASM	Grass	Western Wheatgrass (Pascopyrum smithii) - PASM
41	Noxious List C	Downy brome (Bromus tectorum) - BRTE	Unvegetated	Litter
42	Unvegetated	Litter	Unvegetated	Litter
43	Unvegetated	Litter	Unvegetated	Litter
44	Undesirable	Alyssum (Alyssum simplex) - ALSI8	Unvegetated	Bare Ground
45	Undesirable	Alyssum (Alyssum simplex) - ALSI8	Unvegetated	Litter
46	Forb	Curlycup gumweed (Grindelia squarrosa) - GRSQ	Forb	Curlycup gumweed (Grindelia squarrosa) - GRSQ
47	Grass	Western Wheatgrass (Pascopyrum smithii) - PASM	Unvegetated	Litter
48	Undesirable	Alyssum (Alyssum simplex) - ALSI8	Unvegetated	Litter
49	Unvegetated	Bare Ground	Unvegetated	Bare Ground
50	Shrub	Rubber Rabbitbrush (Ericameria nauseosa) - ERNA10	Unvegetated	Litter

Client Caerus Oil and Gas, Inc.
 Operator Location Information A15
 Assessment Date 6/17/2024
 Inspector Name Alex Slorby
 Transect Length (m) 50

Reclaim Transect 2

Point #	Cover Type - Foliar	Species - Foliar	Cover Type - Basal	Species - Basal
1	Forb	Sweet clover (Melilotus officinalis) - MEOF	Unvegetated	Litter
2	Unvegetated	Litter	Unvegetated	Litter
3	Unvegetated	Bare Ground	Unvegetated	Bare Ground
4	Undesirable	Alyssum (Alyssum simplex) - ALSI8	Undesirable	Alyssum (Alyssum simplex) - ALSI8
5	Unvegetated	Bare Ground	Unvegetated	Bare Ground
6	Unvegetated	Litter	Unvegetated	Litter
7	Noxious List C	Bulbous bluegrass (Poa bulbosa) - POBU	Unvegetated	Litter
8	Noxious List C	Bulbous bluegrass (Poa bulbosa) - POBU	Unvegetated	Litter
9	Forb	Sweet clover (Melilotus officinalis) - MEOF	Unvegetated	Litter
10	Unvegetated	Litter	Unvegetated	Litter
11	Noxious List C	Bulbous bluegrass (Poa bulbosa) - POBU	Unvegetated	Litter
12	Forb	Sweet clover (Melilotus officinalis) - MEOF	Unvegetated	Bare Ground
13	Forb	Curlycup gumweed (Grindelia squarrosa) - GRSQ	Unvegetated	Bare Ground
14	Shrub	Rubber Rabbitbrush (Ericameria nauseosa) - ERNA10	Unvegetated	Litter
15	Forb	Alfalfa (Medicago sativa) - MESA	Forb	Alfalfa (Medicago sativa) - MESA
16	Shrub	Rubber Rabbitbrush (Ericameria nauseosa) - ERNA10	Unvegetated	Litter
17	Shrub	Rubber Rabbitbrush (Ericameria nauseosa) - ERNA10	Unvegetated	Litter
18	Shrub	Rubber Rabbitbrush (Ericameria nauseosa) - ERNA10	Undesirable	Alyssum (Alyssum simplex) - ALSI8
19	Shrub	Broom snakeweed (Gutierrezia sarothrae) - GUSA2	Shrub	Broom snakeweed (Gutierrezia sarothrae) - GUSA2
20	Undesirable	Alyssum (Alyssum simplex) - ALSI8	Undesirable	Alyssum (Alyssum simplex) - ALSI8
21	Undesirable	Alyssum (Alyssum simplex) - ALSI8	Unvegetated	Litter
22	Undesirable	Alyssum (Alyssum simplex) - ALSI8	Unvegetated	Bare Ground
23	Grass	Western Wheatgrass (Pascopyrum smithii) - PASM	Unvegetated	Bare Ground
24	Unvegetated	Litter	Unvegetated	Litter
25	Shrub	Rubber Rabbitbrush (Ericameria nauseosa) - ERNA10	Shrub	Rubber Rabbitbrush (Ericameria nauseosa) - ERNA10
26	Shrub	Rubber Rabbitbrush (Ericameria nauseosa) - ERNA10	Unvegetated	Litter
27	Shrub	Broom snakeweed (Gutierrezia sarothrae) - GUSA2	Undesirable	Alyssum (Alyssum simplex) - ALSI8
28	Unvegetated	Litter	Unvegetated	Litter
29	Undesirable	Alyssum (Alyssum simplex) - ALSI8	Undesirable	Alyssum (Alyssum simplex) - ALSI8
30	Undesirable	Alyssum (Alyssum simplex) - ALSI8	Unvegetated	Litter
31	Unvegetated	Bare Ground	Unvegetated	Bare Ground
32	Shrub	Broom snakeweed (Gutierrezia sarothrae) - GUSA2	Unvegetated	Litter
33	Unvegetated	Litter	Unvegetated	Litter
34	Undesirable	Alyssum (Alyssum simplex) - ALSI8	Unvegetated	Litter
35	Unvegetated	Litter	Unvegetated	Litter
36	Shrub	Broom snakeweed (Gutierrezia sarothrae) - GUSA2	Unvegetated	Litter
37	Shrub	Big Sagebrush (Artemisia tridentata) - ARTR2	Shrub	Big Sagebrush (Artemisia tridentata) - ARTR2
38	Unvegetated	Bare Ground	Unvegetated	Bare Ground
39	Undesirable	Alyssum (Alyssum simplex) - ALSI8	Unvegetated	Litter
40	Shrub	Rubber Rabbitbrush (Ericameria nauseosa) - ERNA10	Undesirable	Alyssum (Alyssum simplex) - ALSI8
41	Shrub	Rubber Rabbitbrush (Ericameria nauseosa) - ERNA10	Unvegetated	Litter
42	Unvegetated	Litter	Unvegetated	Litter
43	Unvegetated	Litter	Unvegetated	Litter
44	Shrub	Broom snakeweed (Gutierrezia sarothrae) - GUSA2	Shrub	Broom snakeweed (Gutierrezia sarothrae) - GUSA2
45	Shrub	Broom snakeweed (Gutierrezia sarothrae) - GUSA2	Shrub	Broom snakeweed (Gutierrezia sarothrae) - GUSA2
46	Shrub	Rubber Rabbitbrush (Ericameria nauseosa) - ERNA10	Unvegetated	Litter
47	Unvegetated	Litter	Unvegetated	Litter
48	Unvegetated	Bare Ground	Unvegetated	Bare Ground
49	Unvegetated	Litter	Unvegetated	Litter
50	Unvegetated	Litter	Unvegetated	Litter

Client Caerus Oil and Gas, Inc.
 Operator Location Information A15
 Assessment Date 6/17/2024
 Inspector Name Alex Slorby
 Transect Length (m) 50

Reclaim Transect 3

Point #	Cover Type - Foliar	Species - Foliar	Cover Type - Basal	Species - Basal
1	Noxious List C	Downy brome (Bromus tectorum) - BRTE	Noxious List C	Downy brome (Bromus tectorum) - BRTE
2	Grass	Western Wheatgrass (Pascopyrum smithii) - PASM	Grass	Western Wheatgrass (Pascopyrum smithii) - PASM
3	Shrub	Rubber Rabbitbrush (Ericameria nauseosa) - ERNA10	Unvegetated	Litter
4	Shrub	Rubber Rabbitbrush (Ericameria nauseosa) - ERNA10	Forb	Sweet clover (Melilotus officinalis) - MEOF
5	Forb	Alfalfa (Medicago sativa) - MESA	Forb	Alfalfa (Medicago sativa) - MESA
6	Unvegetated	Bare Ground	Unvegetated	Bare Ground
7	Unvegetated	Litter	Unvegetated	Litter
8	Unvegetated	Litter	Unvegetated	Litter
9	Grass	Western Wheatgrass (Pascopyrum smithii) - PASM	Grass	Western Wheatgrass (Pascopyrum smithii) - PASM
10	Grass	Western Wheatgrass (Pascopyrum smithii) - PASM	Grass	Western Wheatgrass (Pascopyrum smithii) - PASM
11	Grass	Western Wheatgrass (Pascopyrum smithii) - PASM	Grass	Western Wheatgrass (Pascopyrum smithii) - PASM
12	Unvegetated	Litter	Unvegetated	Litter
13	Grass	Western Wheatgrass (Pascopyrum smithii) - PASM	Forb	Alfalfa (Medicago sativa) - MESA
14	Undesirable	Alyssum (Alyssum simplex) - ALSI8	Unvegetated	Litter
15	Unvegetated	Litter	Unvegetated	Litter
16	Unvegetated	Rock	Unvegetated	Rock
17	Forb	Sweet clover (Melilotus officinalis) - MEOF	Unvegetated	Litter
18	Unvegetated	Litter	Unvegetated	Litter
19	Shrub	Rubber Rabbitbrush (Ericameria nauseosa) - ERNA10	Undesirable	Alyssum (Alyssum simplex) - ALSI8
20	Undesirable	Alyssum (Alyssum simplex) - ALSI8	Undesirable	Alyssum (Alyssum simplex) - ALSI8
21	Forb	Alfalfa (Medicago sativa) - MESA	Forb	Alfalfa (Medicago sativa) - MESA
22	Unvegetated	Bare Ground	Unvegetated	Bare Ground
23	Unvegetated	Litter	Unvegetated	Litter
24	Forb	Sweet clover (Melilotus officinalis) - MEOF	Forb	Sweet clover (Melilotus officinalis) - MEOF
25	Unvegetated	Litter	Unvegetated	Litter
26	Noxious List C	Bulbous bluegrass (Poa bulbosa) - POBU	Unvegetated	Litter
27	Unvegetated	Litter	Unvegetated	Litter
28	Forb	Alfalfa (Medicago sativa) - MESA	Unvegetated	Litter
29	Noxious List C	Downy brome (Bromus tectorum) - BRTE	Undesirable	Alyssum (Alyssum simplex) - ALSI8
30	Unvegetated	Bare Ground	Unvegetated	Bare Ground
31	Unvegetated	Bare Ground	Unvegetated	Bare Ground
32	Shrub	Big Sagebrush (Artemisia tridentata) - ARTR2	Unvegetated	Litter
33	Unvegetated	Bare Ground	Unvegetated	Bare Ground
34	Shrub	Big Sagebrush (Artemisia tridentata) - ARTR2	Undesirable	Alyssum (Alyssum simplex) - ALSI8
35	Unvegetated	Bare Ground	Unvegetated	Bare Ground
36	Shrub	Big Sagebrush (Artemisia tridentata) - ARTR2	Unvegetated	Litter
37	Unvegetated	Litter	Unvegetated	Litter
38	Unvegetated	Litter	Unvegetated	Litter
39	Grass	Western Wheatgrass (Pascopyrum smithii) - PASM	Grass	Western Wheatgrass (Pascopyrum smithii) - PASM
40	Shrub	Big Sagebrush (Artemisia tridentata) - ARTR2	Noxious List C	Downy brome (Bromus tectorum) - BRTE
41	Unvegetated	Litter	Unvegetated	Litter
42	Shrub	Big Sagebrush (Artemisia tridentata) - ARTR2	Unvegetated	Bare Ground
43	Unvegetated	Bare Ground	Unvegetated	Bare Ground
44	Unvegetated	Bare Ground	Unvegetated	Bare Ground
45	Shrub	Big Sagebrush (Artemisia tridentata) - ARTR2	Noxious List C	Downy brome (Bromus tectorum) - BRTE
46	Shrub	Big Sagebrush (Artemisia tridentata) - ARTR2	Unvegetated	Litter
47	Shrub	Big Sagebrush (Artemisia tridentata) - ARTR2	Shrub	Big Sagebrush (Artemisia tridentata) - ARTR2
48	Noxious List C	Downy brome (Bromus tectorum) - BRTE	Noxious List C	Downy brome (Bromus tectorum) - BRTE
49	Unvegetated	Litter	Unvegetated	Litter
50	Shrub	Rubber Rabbitbrush (Ericameria nauseosa) - ERNA10	Undesirable	Alyssum (Alyssum simplex) - ALSI8

Client Caerus Oil and Gas, Inc.
 Operator Location Information A15
 Assessment Date 6/17/2024
 Inspector Name Alex Slorby
 Transect Length (m) 75

Reference Transect 1

Point #	Cover Type - Foliar	Species - Foliar	Cover Type - Basal	Species - Basal
1	Unvegetated	Litter	Unvegetated	Litter
2	Unvegetated	Litter	Unvegetated	Litter
3	Shrub	Big Sagebrush (Artemisia tridentata) - ARTR2	Undesirable	Alyssum (Alyssum simplex) - ALSI8
4	Shrub	Broom snakeweed (Gutierrezia sarothrae) - GUSA2	Unvegetated	Bare Ground
5	Noxious List C	Bulbous bluegrass (Poa bulbosa) - POBU	Unvegetated	Bare Ground
6	Unvegetated	Bare Ground	Unvegetated	Bare Ground
7	Noxious List C	Bulbous bluegrass (Poa bulbosa) - POBU	Unvegetated	Litter
8	Noxious List C	Bulbous bluegrass (Poa bulbosa) - POBU	Unvegetated	Litter
9	Unvegetated	Bare Ground	Unvegetated	Bare Ground
10	Shrub	Broom snakeweed (Gutierrezia sarothrae) - GUSA2	Unvegetated	Bare Ground
11	Unvegetated	Litter	Unvegetated	Litter
12	Unvegetated	Litter	Unvegetated	Litter
13	Unvegetated	Litter	Unvegetated	Litter
14	Undesirable	Alyssum (Alyssum simplex) - ALSI8	Undesirable	Alyssum (Alyssum simplex) - ALSI8
15	Grass	Western Wheatgrass (Pascopyrum smithii) - PASM	Grass	Western Wheatgrass (Pascopyrum smithii) - PASM
16	Unvegetated	Litter	Unvegetated	Litter
17	Shrub	Big Sagebrush (Artemisia tridentata) - ARTR2	Grass	Western Wheatgrass (Pascopyrum smithii) - PASM
18	Unvegetated	Bare Ground	Unvegetated	Bare Ground
19	Unvegetated	Bare Ground	Unvegetated	Bare Ground
20	Unvegetated	Bare Ground	Unvegetated	Bare Ground
21	Noxious List C	Bulbous bluegrass (Poa bulbosa) - POBU	Unvegetated	Bare Ground
22	Grass	Crested wheatgrass (Agropyron cristatum) - AGCR	Unvegetated	Litter
23	Unvegetated	Litter	Unvegetated	Litter
24	Noxious List C	Bulbous bluegrass (Poa bulbosa) - POBU	Unvegetated	Litter
25	Grass	Western Wheatgrass (Pascopyrum smithii) - PASM	Grass	Western Wheatgrass (Pascopyrum smithii) - PASM
26	Grass	Western Wheatgrass (Pascopyrum smithii) - PASM	Grass	Western Wheatgrass (Pascopyrum smithii) - PASM
27	Undesirable	Alyssum (Alyssum simplex) - ALSI8	Undesirable	Alyssum (Alyssum simplex) - ALSI8
28	Unvegetated	Litter	Unvegetated	Litter
29	Shrub	Big Sagebrush (Artemisia tridentata) - ARTR2	Unvegetated	Litter
30	Forb	Prickly pear (Opuntia Spp.) - Various	Unvegetated	Litter
31	Shrub	Big Sagebrush (Artemisia tridentata) - ARTR2	Noxious List C	Bulbous bluegrass (Poa bulbosa) - POBU
32	Unvegetated	Bare Ground	Unvegetated	Bare Ground
33	Unvegetated	Litter	Unvegetated	Litter
34	Unvegetated	Bare Ground	Unvegetated	Bare Ground
35	Shrub	Big Sagebrush (Artemisia tridentata) - ARTR2	Shrub	Big Sagebrush (Artemisia tridentata) - ARTR2
36	Unvegetated	Litter	Unvegetated	Litter
37	Grass	Western Wheatgrass (Pascopyrum smithii) - PASM	Grass	Western Wheatgrass (Pascopyrum smithii) - PASM
38	Shrub	Big Sagebrush (Artemisia tridentata) - ARTR2	Unvegetated	Litter
39	Unvegetated	Litter	Unvegetated	Litter
40	Grass	Western Wheatgrass (Pascopyrum smithii) - PASM	Unvegetated	Litter
41	Unvegetated	Litter	Unvegetated	Litter
42	Unvegetated	Litter	Unvegetated	Litter
43	Unvegetated	Litter	Unvegetated	Litter
44	Shrub	Big Sagebrush (Artemisia tridentata) - ARTR2	Unvegetated	Bare Ground
45	Unvegetated	Bare Ground	Unvegetated	Bare Ground
46	Unvegetated	Litter	Unvegetated	Litter
47	Shrub	Big Sagebrush (Artemisia tridentata) - ARTR2	Unvegetated	Litter
48	Grass	Western Wheatgrass (Pascopyrum smithii) - PASM	Grass	Western Wheatgrass (Pascopyrum smithii) - PASM
49	Grass	Western Wheatgrass (Pascopyrum smithii) - PASM	Grass	Western Wheatgrass (Pascopyrum smithii) - PASM
50	Unvegetated	Bare Ground	Unvegetated	Bare Ground
51	Shrub	Big Sagebrush (Artemisia tridentata) - ARTR2	Unvegetated	Litter
52	Unvegetated	Litter	Unvegetated	Litter
53	Unvegetated	Bare Ground	Unvegetated	Bare Ground
54	Unvegetated	Bare Ground	Unvegetated	Bare Ground
55	Shrub	Big Sagebrush (Artemisia tridentata) - ARTR2	Undesirable	Alyssum (Alyssum simplex) - ALSI8
56	Shrub	Big Sagebrush (Artemisia tridentata) - ARTR2	Unvegetated	Litter
57	Shrub	Big Sagebrush (Artemisia tridentata) - ARTR2	Unvegetated	Litter
58	Unvegetated	Litter	Unvegetated	Litter
59	Shrub	Big Sagebrush (Artemisia tridentata) - ARTR2	Noxious List C	Bulbous bluegrass (Poa bulbosa) - POBU
60	Unvegetated	Bare Ground	Unvegetated	Bare Ground
61	Shrub	Big Sagebrush (Artemisia tridentata) - ARTR2	Unvegetated	Litter
62	Grass	Western Wheatgrass (Pascopyrum smithii) - PASM	Grass	Western Wheatgrass (Pascopyrum smithii) - PASM
63	Shrub	Big Sagebrush (Artemisia tridentata) - ARTR2	Unvegetated	Litter
64	Unvegetated	Litter	Unvegetated	Litter
65	Unvegetated	Bare Ground	Unvegetated	Bare Ground
66	Unvegetated	Litter	Unvegetated	Litter
67	Unvegetated	Litter	Unvegetated	Litter
68	Unvegetated	Litter	Unvegetated	Litter
69	Shrub	Big Sagebrush (Artemisia tridentata) - ARTR2	Noxious List C	Bulbous bluegrass (Poa bulbosa) - POBU
70	Shrub	Big Sagebrush (Artemisia tridentata) - ARTR2	Shrub	Big Sagebrush (Artemisia tridentata) - ARTR2
71	Shrub	Big Sagebrush (Artemisia tridentata) - ARTR2	Shrub	Big Sagebrush (Artemisia tridentata) - ARTR2
72	Unvegetated	Litter	Unvegetated	Litter
73	Shrub	Big Sagebrush (Artemisia tridentata) - ARTR2	Noxious List C	Bulbous bluegrass (Poa bulbosa) - POBU
74	Undesirable	Alyssum (Alyssum simplex) - ALSI8	Unvegetated	Bare Ground
75	Unvegetated	Litter	Unvegetated	Litter

Client Caerus Oil and Gas, Inc.
 Operator Location Information A15
 Assessment Date 6/17/2024
 Inspector Name Alex Slorby
 Transect Length (m) 75

Reference Transect 2

Point #	Cover Type - Foliar	Species - Foliar	Cover Type - Basal	Species - Basal
1	Forb	Scarlet globemallow (Sphaeralcea coccinea) - SPCO	Forb	Scarlet globemallow (Sphaeralcea coccinea) - SPCO
2	Shrub	Big Sagebrush (Artemisia tridentata) - ARTR2	Unvegetated	Litter
3	Shrub	Big Sagebrush (Artemisia tridentata) - ARTR2	Unvegetated	Bare Ground
4	Unvegetated	Litter	Unvegetated	Litter
5	Unvegetated	Litter	Unvegetated	Litter
6	Shrub	Big Sagebrush (Artemisia tridentata) - ARTR2	Unvegetated	Litter
7	Noxious List C	Bulbous bluegrass (Poa bulbosa) - POBU	Unvegetated	Litter
8	Shrub	Big Sagebrush (Artemisia tridentata) - ARTR2	Shrub	Big Sagebrush (Artemisia tridentata) - ARTR2
9	Shrub	Big Sagebrush (Artemisia tridentata) - ARTR2	Noxious List C	Bulbous bluegrass (Poa bulbosa) - POBU
10	Grass	Western Wheatgrass (Pascopyrum smithii) - PASM	Unvegetated	Litter
11	Grass	Western Wheatgrass (Pascopyrum smithii) - PASM	Unvegetated	Litter
12	Unvegetated	Litter	Unvegetated	Litter
13	Noxious List C	Bulbous bluegrass (Poa bulbosa) - POBU	Noxious List C	Bulbous bluegrass (Poa bulbosa) - POBU
14	Shrub	Big Sagebrush (Artemisia tridentata) - ARTR2	Unvegetated	Litter
15	Noxious List C	Bulbous bluegrass (Poa bulbosa) - POBU	Unvegetated	Litter
16	Shrub	Big Sagebrush (Artemisia tridentata) - ARTR2	Unvegetated	Litter
17	Unvegetated	Litter	Unvegetated	Litter
18	Noxious List C	Bulbous bluegrass (Poa bulbosa) - POBU	Shrub	Big Sagebrush (Artemisia tridentata) - ARTR2
19	Grass	Western Wheatgrass (Pascopyrum smithii) - PASM	Grass	Western Wheatgrass (Pascopyrum smithii) - PASM
20	Unvegetated	Bare Ground	Unvegetated	Bare Ground
21	Shrub	Big Sagebrush (Artemisia tridentata) - ARTR2	Unvegetated	Litter
22	Unvegetated	Litter	Unvegetated	Litter
23	Shrub	Big Sagebrush (Artemisia tridentata) - ARTR2	Shrub	Big Sagebrush (Artemisia tridentata) - ARTR2
24	Shrub	Big Sagebrush (Artemisia tridentata) - ARTR2	Unvegetated	Litter
25	Grass	Western Wheatgrass (Pascopyrum smithii) - PASM	Grass	Western Wheatgrass (Pascopyrum smithii) - PASM
26	Grass	Western Wheatgrass (Pascopyrum smithii) - PASM	Grass	Western Wheatgrass (Pascopyrum smithii) - PASM
27	Shrub	Big Sagebrush (Artemisia tridentata) - ARTR2	Unvegetated	Litter
28	Unvegetated	Bare Ground	Unvegetated	Bare Ground
29	Unvegetated	Litter	Unvegetated	Litter
30	Unvegetated	Litter	Unvegetated	Litter
31	Shrub	Big Sagebrush (Artemisia tridentata) - ARTR2	Shrub	Big Sagebrush (Artemisia tridentata) - ARTR2
32	Shrub	Big Sagebrush (Artemisia tridentata) - ARTR2	Unvegetated	Litter
33	Noxious List C	Bulbous bluegrass (Poa bulbosa) - POBU	Noxious List C	Bulbous bluegrass (Poa bulbosa) - POBU
34	Unvegetated	Litter	Unvegetated	Litter
35	Unvegetated	Bare Ground	Unvegetated	Bare Ground
36	Shrub	Big Sagebrush (Artemisia tridentata) - ARTR2	Unvegetated	Litter
37	Unvegetated	Litter	Unvegetated	Litter
38	Noxious List C	Bulbous bluegrass (Poa bulbosa) - POBU	Noxious List C	Bulbous bluegrass (Poa bulbosa) - POBU
39	Unvegetated	Bare Ground	Unvegetated	Bare Ground
40	Grass	Western Wheatgrass (Pascopyrum smithii) - PASM	Grass	Western Wheatgrass (Pascopyrum smithii) - PASM
41	Unvegetated	Litter	Unvegetated	Litter
42	Unvegetated	Litter	Unvegetated	Litter
43	Shrub	Big Sagebrush (Artemisia tridentata) - ARTR2	Noxious List C	Downy brome (Bromus tectorum) - BRTE
44	Unvegetated	Bare Ground	Unvegetated	Bare Ground
45	Shrub	Big Sagebrush (Artemisia tridentata) - ARTR2	Unvegetated	Litter
46	Unvegetated	Litter	Unvegetated	Litter
47	Undesirable	Alyssum (Alyssum simplex) - ALSI8	Unvegetated	Litter
48	Unvegetated	Bare Ground	Unvegetated	Bare Ground
49	Unvegetated	Bare Ground	Unvegetated	Bare Ground
50	Grass	Western Wheatgrass (Pascopyrum smithii) - PASM	Unvegetated	Bare Ground
51	Unvegetated	Bare Ground	Unvegetated	Bare Ground
52	Unvegetated	Litter	Unvegetated	Litter
53	Shrub	Big Sagebrush (Artemisia tridentata) - ARTR2	Unvegetated	Litter
54	Unvegetated	Bare Ground	Unvegetated	Bare Ground
55	Shrub	Big Sagebrush (Artemisia tridentata) - ARTR2	Unvegetated	Litter
56	Noxious List C	Downy brome (Bromus tectorum) - BRTE	Unvegetated	Bare Ground
57	Unvegetated	Bare Ground	Unvegetated	Bare Ground
58	Unvegetated	Litter	Unvegetated	Litter
59	Unvegetated	Litter	Unvegetated	Litter
60	Grass	Western Wheatgrass (Pascopyrum smithii) - PASM	Unvegetated	Litter
61	Shrub	Big Sagebrush (Artemisia tridentata) - ARTR2	Unvegetated	Bare Ground
62	Grass	Western Wheatgrass (Pascopyrum smithii) - PASM	Grass	Western Wheatgrass (Pascopyrum smithii) - PASM
63	Unvegetated	Litter	Unvegetated	Litter
64	Shrub	Big Sagebrush (Artemisia tridentata) - ARTR2	Shrub	Big Sagebrush (Artemisia tridentata) - ARTR2
65	Unvegetated	Bare Ground	Unvegetated	Bare Ground
66	Noxious List C	Bulbous bluegrass (Poa bulbosa) - POBU	Unvegetated	Litter
67	Shrub	Big Sagebrush (Artemisia tridentata) - ARTR2	Unvegetated	Litter
68	Unvegetated	Litter	Unvegetated	Litter
69	Shrub	Big Sagebrush (Artemisia tridentata) - ARTR2	Shrub	Big Sagebrush (Artemisia tridentata) - ARTR2
70	Unvegetated	Litter	Unvegetated	Litter
71	Noxious List C	Bulbous bluegrass (Poa bulbosa) - POBU	Unvegetated	Bare Ground
72	Unvegetated	Litter	Unvegetated	Litter
73	Noxious List C	Bulbous bluegrass (Poa bulbosa) - POBU	Unvegetated	Litter
74	Shrub	Big Sagebrush (Artemisia tridentata) - ARTR2	Grass	Western Wheatgrass (Pascopyrum smithii) - PASM
75	Shrub	Big Sagebrush (Artemisia tridentata) - ARTR2	Unvegetated	Litter

Quantitative Vegetation Survey - Photo Log

Operator Location Name A15
Location Type Well Site
Event ID COG240604-QVS0008

Directional Photos

Photo Point 1



Photo Point 2



NOTE: Geographic coordinate were collected with a sub-meter accurate GPS unit.

Quantitative Vegetation Survey - Photo Log

Operator Location Name A15
Location Type Well Site
Event ID COG240604-QVS0008

Directional Photos

Photo Point 3



Photo Point 4



NOTE: Geographic coordinate were collected with a sub-meter accurate GPS unit.

Quantitative Vegetation Survey - Photo Log

Operator Location Name A15

Location Type Well Site

Event ID COG240604-QVS0008

Directional Photos

Photo Point 5



NOTE: Geographic coordinate were collected with a sub-meter accurate GPS unit.