

# Flanigan 1B-6H

NWNE Sec. 6-T1N-R64W

API #: 123-35695

Facility ID: 473649

Remediation Project #: 36987

Form 19 Data Package

January 2025

Prepared by Tasman, Inc.



On behalf of Crestone Peak Resources Operating, LLC



# PHOTO LOG



# Photographic Log

<p>☉ 31°NE (T) ● 40°5'13"N, 104°35'30"W ±16ft ▲ 4994ft</p>			<p>☉ 61°NE (T) ● 40°5'13"N, 104°35'30"W ±16ft ▲ 4993ft</p>		
03 Jan 2025 10:02:59			03 Jan 2025 10:03:08		
<b>Equipment ID:</b>		<b>Equipment Type:</b>	<b>Equipment ID:</b>		<b>Equipment Type:</b>
<b>Material:</b>	<b>Volume:</b>	<b>Contents:</b>	<b>Material:</b>	<b>Volume:</b>	<b>Contents:</b>
<b>Notes/Conditions:</b> Soil Sample Location			<b>Notes/Conditions:</b> Soil Sample Location		



# Photographic Log

<p>⊙ 211°SW (T) ● 40°5'13"N, 104°35'34"W ±16ft ▲ 4991ft</p>			<p>⊙ 331°NW (T) ● 40°5'13"N, 104°35'34"W ±16ft ▲ 4991ft</p>		
<b>Equipment ID:</b>		<b>Equipment Type:</b>	<b>Equipment ID:</b>		<b>Equipment Type:</b>
<b>Material:</b>	<b>Volume:</b>	<b>Contents:</b>	<b>Material:</b>	<b>Volume:</b>	<b>Contents:</b>
<b>Notes/Conditions:</b> Soil Sample Location			<b>Notes/Conditions:</b> Soil Sample Locations		

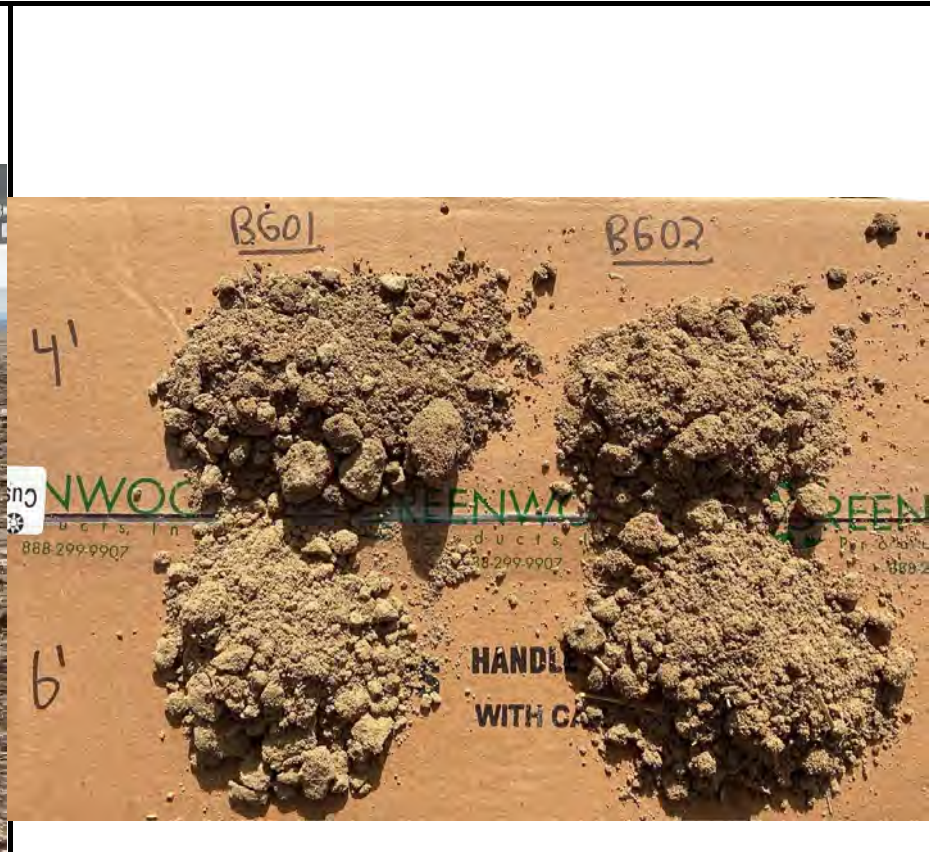
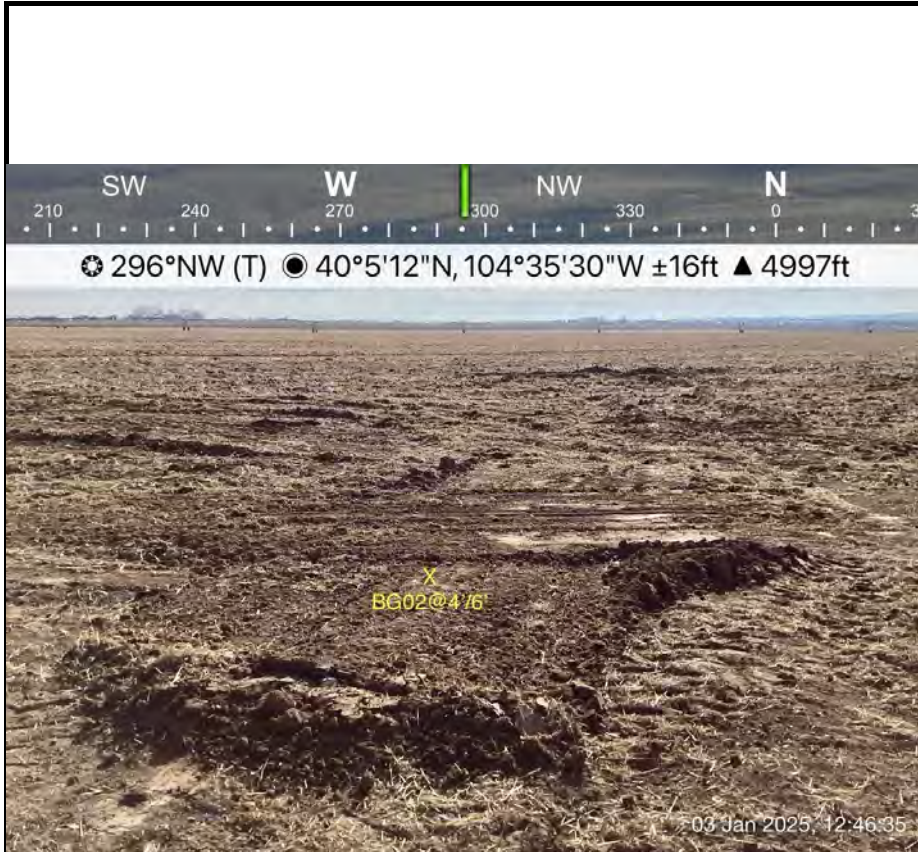


# Photographic Log

<p>Equipment ID: _____ Equipment Type: _____</p>			<p>Equipment ID: _____ Equipment Type: _____</p>		
<p>Material: _____</p>	<p>Volume: _____</p>	<p>Contents: _____</p>	<p>Material: _____</p>	<p>Volume: _____</p>	<p>Contents: _____</p>
<p>Notes/Conditions: Soil Sample Locations</p>			<p>Notes/Conditions: Background Soil Sample Location</p>		



# Photographic Log



Equipment ID:		Equipment Type:	
Material:	Volume:	Contents:	
Notes/Conditions: Background Soil Sample Location			

Equipment ID:		Equipment Type:	
Material:	Volume:	Contents:	
Notes/Conditions: Background Soil Sample Lithology			



# Photographic Log

<p>W 270 NW 300 330 N 0 NE 30 60 E 90</p> <p>☉ 2°N (T) ● 40°5'14"N, 104°35'35"W ±32ft ▲ 4996ft</p>			<p>W 270 NW 300 330 N 0 NE 30 60 E 90</p> <p>☉ 357°N (T) ● 40°5'14"N, 104°35'34"W ±39ft ▲ 4997ft</p>				
<p style="text-align: center;">29 Jan 2025, 11:15:13</p>			<p style="text-align: center;">29 Jan 2025, 11:18:41</p>				
<b>Equipment ID:</b>		<b>Equipment Type:</b>		<b>Equipment ID:</b>		<b>Equipment Type:</b>	
<b>Material:</b>	<b>Volume:</b>	<b>Contents:</b>		<b>Material:</b>	<b>Volume:</b>	<b>Contents:</b>	
<b>Notes/Conditions:</b> Soil Sample Locations				<b>Notes/Conditions:</b> Soil Sample Locations			



# Photographic Log

<p>☉ 97°E (T) ● 40°5'14"N, 104°35'34"W ±16ft ▲ 4993ft</p>			<p>☉ 199°S (T) ● 40°5'14"N, 104°35'34"W ±16ft ▲ 4991ft</p>		
<p>29 Jan 2025, 11:36:39</p>			<p>29 Jan 2025, 11:36:54</p>		
<b>Equipment ID:</b>		<b>Equipment Type:</b>	<b>Equipment ID:</b>		<b>Equipment Type:</b>
<b>Material:</b>	<b>Volume:</b>	<b>Contents:</b>	<b>Material:</b>	<b>Volume:</b>	<b>Contents:</b>
<b>Notes/Conditions:</b> Soil Sample and Screening Locations			<b>Notes/Conditions:</b> Soil Sample and Screening Locations		



# Photographic Log

<b>Equipment ID:</b>		<b>Equipment Type:</b>		<b>Equipment ID:</b>		<b>Equipment Type:</b>	
<b>Material:</b>		<b>Volume:</b>		<b>Material:</b>		<b>Volume:</b>	
<b>Contents:</b>				<b>Contents:</b>			
<b>Notes/Conditions:</b> Soil Sample and Screening Locations				<b>Notes/Conditions:</b> Soil Sample and Screening Locations			



# Photographic Log

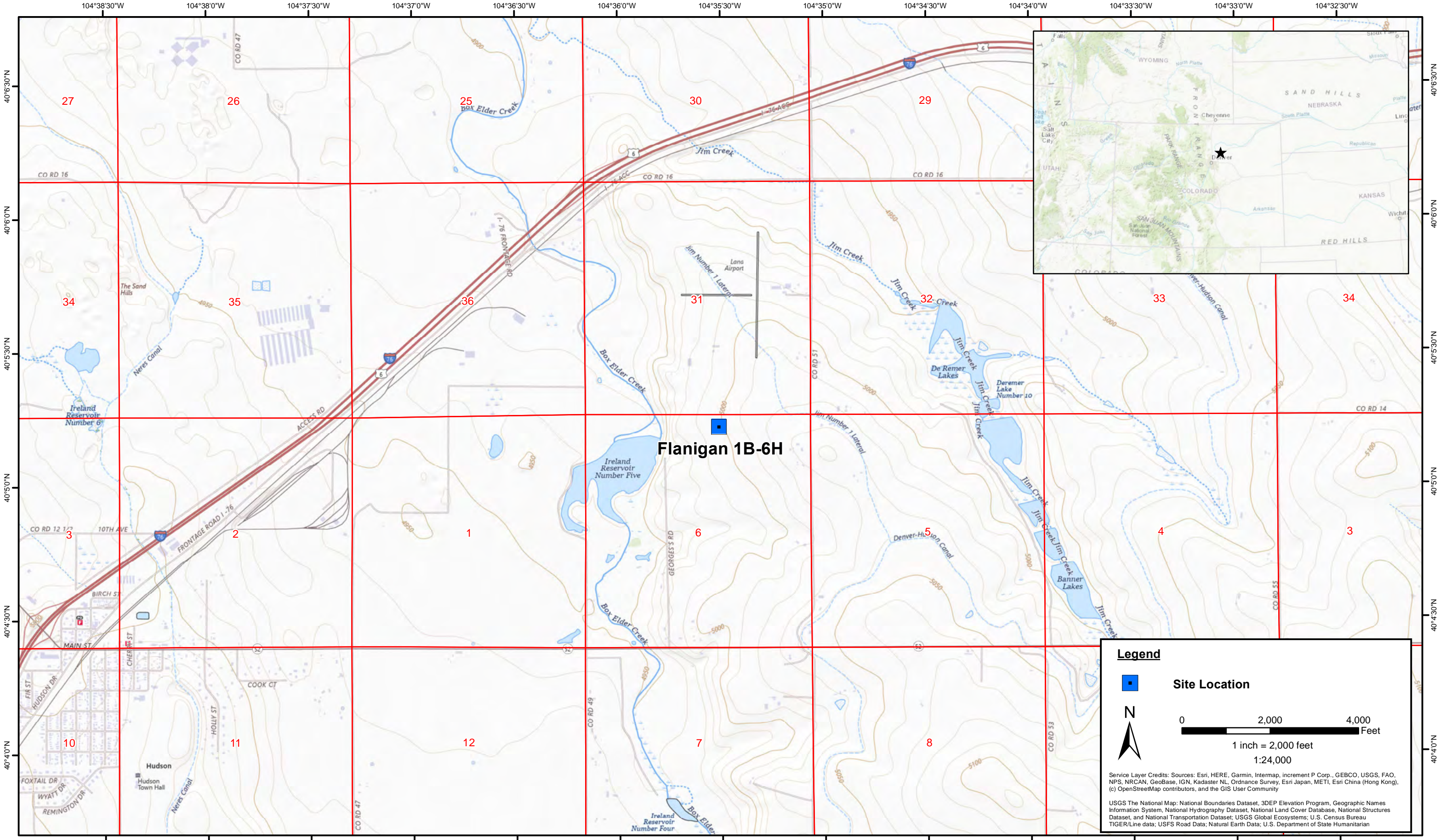
<b>Equipment ID:</b>		<b>Equipment Type:</b>	<b>Equipment ID:</b>		<b>Equipment Type:</b>
<b>Material:</b>	<b>Volume:</b>	<b>Contents:</b>	<b>Material:</b>	<b>Volume:</b>	<b>Contents:</b>
<b>Notes/Conditions:</b> Soil Sample and Screening Locations			<b>Notes/Conditions:</b> Soil Screening Locations		



# Photographic Log

<b>Equipment ID:</b>		<b>Equipment Type:</b>	<b>Equipment ID:</b>		<b>Equipment Type:</b>
<b>Material:</b>	<b>Volume:</b>	<b>Contents:</b>	<b>Material:</b>	<b>Volume:</b>	<b>Contents:</b>
<b>Notes/Conditions:</b> Soil Sample and Screening Locations			<b>Notes/Conditions:</b> Soil Sample and Screening Locations		

# FIGURES



DATE:	January 2025
DESIGNED BY:	S. Vogt
DRAWN BY:	J. Woffinden



**Tasman, Inc.**  
**6855 W. 119th Ave**  
**Broomfield, CO 80020**

**Crestone Peak Resources Operating, LLC**  
**Flanigan 1B-6H**  
 NWNE Sec. 6-T1N-R64W  
 Weld County, Colorado

Site Location Map

Figure  
1



DATE:	March 10, 2025
DESIGNED BY:	S. Vogt
DRAWN BY:	L. Molson



**Tasman, Inc.**  
 6855 W119th Ave.  
 Broomfield, CO 80020

**Crestone Peak Resources Operating, LLC**  
**Flanigan 1B-6H**  
 NWNE Sec. 6-T1N-R64W  
 Weld County, Colorado

Wellhead Soil Sample  
 Location Map  
 (01/03/2025)

Figure  
 2



**Legend**

- + Soil sample location – Exceeded ECMC Table 915-1 Soil Standards (Collected via Trimble GPS)
- Excavation extent (Collected via Trimble GPS)
- Flowline Location

**Notes**

Crestone Peak Resources Operating, LLC site infrastructure has been removed.

All locations are approximate unless otherwise noted.

GPS = Global Positioning System

ECMC = Colorado Energy & Carbon Management Commission

0 ft.      50 ft.      100 ft.

Image Source: Google Earth

DATE:	March 10, 2025
DESIGNED BY:	S. Vogt
DRAWN BY:	L. Molson

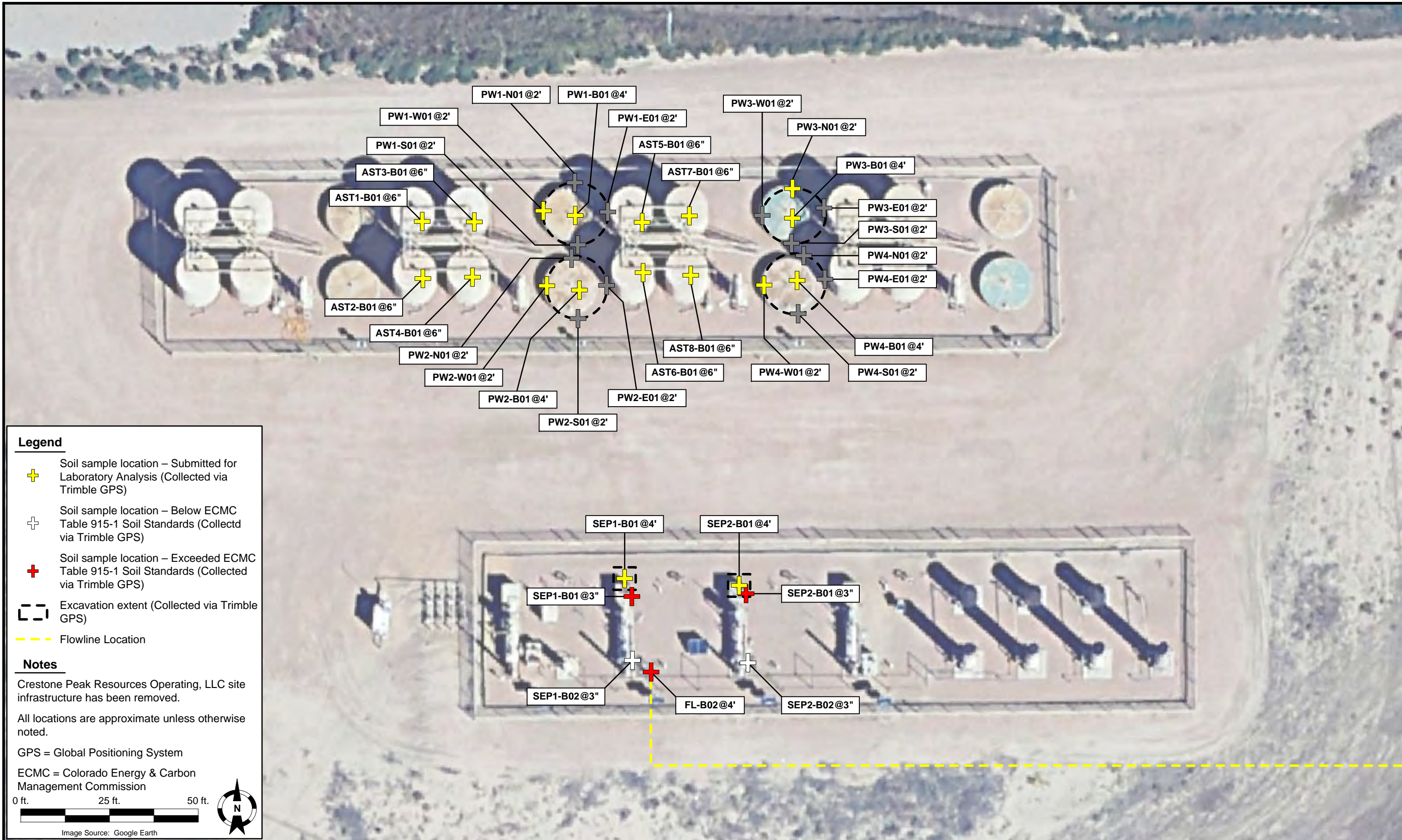


**Tasman, Inc.**  
 6855 W119th Ave.  
 Broomfield, CO 80020

**Crestone Peak Resources Operating, LLC**  
**Flanigan 1B-6H**  
 NWNE Sec. 6-T1N-R64W  
 Weld County, Colorado

Flowline Soil Sample  
 Location Map  
 (01/03/2025)

Figure  
 3



**Legend**

- + Soil sample location – Submitted for Laboratory Analysis (Collected via Trimble GPS)
- + Soil sample location – Below ECMC Table 915-1 Soil Standards (Collected via Trimble GPS)
- + Soil sample location – Exceeded ECMC Table 915-1 Soil Standards (Collected via Trimble GPS)
- Excavation extent (Collected via Trimble GPS)
- Flowline Location

**Notes**

Crestone Peak Resources Operating, LLC site infrastructure has been removed.

All locations are approximate unless otherwise noted.

GPS = Global Positioning System

ECMC = Colorado Energy & Carbon Management Commission

0 ft.      25 ft.      50 ft.



Image Source: Google Earth

DATE: March 10, 2025

DESIGNED BY: S. Vogt

DRAWN BY: L. Molson



**Tasman, Inc.**  
 6855 W119th Ave.  
 Broomfield, CO 80020


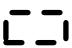

**Crestone Peak Resources Operating, LLC**  
**Flanigan 1B-6H**  
 NWNE Sec. 6-T1N-R64W  
 Weld County, Colorado

Facility Soil Sample  
 Location Map  
 (01/03/2025 & 01/29/2025)

Figure  
 4



**Legend**

-  Background soil sample location (Collected via Trimble GPS)
-  Excavation extent (Collected via Trimble GPS)
-  Flowline Location

**Notes**

Crestone Peak Resources Operating, LLC site infrastructure has been removed.

All locations are approximate unless otherwise noted.

GPS = Global Positioning System

0 ft.      50 ft.      100 ft.



Image Source: Google Earth

DATE: March 10, 2025

DESIGNED BY: S. Vogt

DRAWN BY: L. Molson



**Tasman, Inc.**  
 6855 W119th Ave.  
 Broomfield, CO 80020

**Crestone Peak Resources Operating, LLC**  
**Flanigan 1B-6H**  
 NWNE Sec. 6-T1N-R64W  
 Weld County, Colorado

Background Soil Sample  
 Location Map  
 (01/03/2025)

Figure  
 5

# **TABLES**

**TABLE 1**  
**FLANIGAN 1B-6H**  
**SOIL SAMPLE LOCATIONS**  
**CRESTONE PEAK RESOURCES OPERATING, LLC**



Soil Sample Location	Depth	Date	PID Reading (ppm)	Latitude	Longitude	GPS PDOP Value	Lab (Y/N)
WH-B01@4'	4'	01/03/2025	2.6	40.086979	-104.591723	1	Y
FL-B01@6'	6'	01/03/2025	1.9	40.087002	-104.591737	1	Y
FL-B02@4'	4'	01/03/2025	1.2	40.087079	-104.592943	0.8	Y
SEP1-B01@3"	3"	01/03/2025	7.7	40.087138	-104.592962	0.7	Y
SEP1-B02@3"	3"	01/03/2025	0.2	40.087089	-104.592962	0.7	Y
SEP2-B01@3"	3"	01/03/2025	249.1	40.087140	-104.592846	0.8	Y
SEP2-B02@3"	3"	01/03/2025	0.5	40.087087	-104.592846	0.7	Y
SEP1-B01@4'	4'	01/29/2025	0.7	40.087152	-104.592969	0.9	Y
SEP2-B01@4'	4'	01/29/2025	1.2	40.087145	-104.592853	0.9	Y
PW1-B01@4'	4'	01/29/2025	0.6	40.087433	-104.593018	0.9	Y
PW1-N01@2'	2'	01/29/2025	0.6	40.087456	-104.593017	0.9	N
PW1-S01@2'	2'	01/29/2025	0.9	40.087411	-104.593015	0.9	N
PW1-E01@2'	2'	01/29/2025	0.9	40.087435	-104.592988	0.9	N
PW1-W01@2'	2'	01/29/2025	1.1	40.087436	-104.593045	1	Y
PW2-B01@4'	4'	01/29/2025	0.6	40.087376	-104.593015	0.9	Y
PW2-N01@2'	2'	01/29/2025	0.4	40.087399	-104.593014	0.9	N
PW2-S01@2'	2'	01/29/2025	0.6	40.087356	-104.593016	1	N
PW2-E01@2'	2'	01/29/2025	0.8	40.087379	-104.592990	1	N
PW2-W01@2'	2'	01/29/2025	0.9	40.087379	-104.593045	1	Y
PW3-B01@4'	4'	01/29/2025	0.9	40.087430	-104.592798	1	Y
PW3-N01@2'	2'	01/29/2025	1.5	40.087452	-104.592799	1	Y
PW3-S01@2'	2'	01/29/2025	0.8	40.087410	-104.592798	1	N
PW3-E01@2'	2'	01/29/2025	0.6	40.087436	-104.592770	1	N
PW3-W01@2'	2'	01/29/2025	0.7	40.087432	-104.592827	1	N
PW4-B01@4'	4'	01/29/2025	0.3	40.087382	-104.592794	1	Y
PW4-N01@2'	2'	01/29/2025	0.3	40.087402	-104.592797	1	N
PW4-S01@2'	2'	01/29/2025	0.5	40.087358	-104.592793	1	N
PW4-E01@2'	2'	01/29/2025	0.7	40.087383	-104.592769	1	N
PW4-W01@2'	2'	01/29/2025	1.5	40.087378	-104.592823	1.1	Y
AST1-B01@6"	6"	01/29/2025	0.5	40.087429	-104.593171	0.9	Y
AST2-B01@6"	6"	01/29/2025	0.6	40.087385	-104.593172	0.9	Y
AST3-B01@6"	6"	01/29/2025	0.6	40.087428	-104.593118	0.9	Y
AST4-B01@6"	6"	01/29/2025	0.4	40.087385	-104.593120	0.9	Y
AST5-B01@6"	6"	01/29/2025	0.3	40.087427	-104.592950	0.9	Y
AST6-B01@6"	6"	01/29/2025	0.2	40.087389	-104.592948	0.9	Y

**TABLE 1**  
**FLANIGAN 1B-6H**  
**SOIL SAMPLE LOCATIONS**  
**CRESTONE PEAK RESOURCES OPERATING, LLC**



Soil Sample Location	Depth	Date	PID Reading (ppm)	Latitude	Longitude	GPS PDOP Value	Lab (Y/N)
AST7-B01@6"	6"	01/29/2025	0.2	40.087432	-104.592903	0.9	Y
AST8-B01@6"	6"	01/29/2025	2.6	40.087386	-104.592902	0.9	Y
<b>BACKGROUND</b>							
BG01@4'	4'	01/03/2025	0.2	40.087294	-104.591906	1	Y
BG01@6'	6'	01/03/2025	0.2	40.087294	-104.591906	1	Y
BG02@4'	4'	01/03/2025	0.2	40.086731	-104.591705	1.1	Y
BG02@6'	6'	01/03/2025	0.1	40.086731	-104.591705	1.1	Y

**Notes:**

PID = Photoionization Detector

ppm = parts per million

GPS = Global Positioning System

PDOP = Position Dilution of Precision

- = Not Applicable



**TABLE 2**  
**FLANIGAN 1B-6H**  
**SOIL ANALYTICAL DATA - VOCs**  
**CRESTONE PEAK RESOURCES OPERATING, LLC**



Soil Sample Location	Depth	Date	Benzene (mg/kg)	Toluene (mg/kg)	Ethylbenzene (mg/kg)	Total Xylenes (mg/kg)	Naphthalene (mg/kg)	TVPH-GRO (mg/kg)	TEPH-DRO (mg/kg)	TEPH-ORO (mg/kg)	1,2,4-TMB (mg/kg)	1,3,5-TMB (mg/kg)
ECMC Organic Compounds in Soils - GSSL <sup>(1)</sup>			0.0026	0.69	0.78	9.9	0.0038	500			0.0081	0.0087
ECMC Organic Compounds in Soils - RSL <sup>(2)</sup>			1.2	490	5.8	58	2	500			30	27
AST8-B01@6"	6"	01/29/2025	Pending	Pending	Pending	Pending	Pending	Pending	Pending	Pending	Pending	Pending

**Notes:**

VOCs = Volatile Organic Compounds

(1) Standards for soil are taken from ECMC Table 915-1: Organic Compounds in Soils - Protection of Groundwater Soil Screening Level Concentrations (Effective January 15, 2021)

(2) Standards for soil are taken from ECMC Table 915-1: Organic Compounds in Soils - Residential Soil Screening Level Concentrations (Effective January 15, 2021)

ECMC = Colorado Energy & Carbon Management Commission

GSSL = Protection of Groundwater Screening Level

RSL = Residential Soil Screening Level

(<) = Analytical result is less than the indicated laboratory reporting limit

mg/kg = milligrams per kilogram

TVPH - GRO = Total Volatile Petroleum Hydrocarbons - Gasoline Range Organics

TEPH - DRO = Total Extractable Petroleum Hydrocarbons - Diesel Range Organics

TEPH - ORO = Total Extractable Petroleum Hydrocarbons - Oil Range Organics

1,2,4 - TMB = 1,2,4 - Trimethylbenzene

1,3,5 - TMB = 1,3,5 - Trimethylbenzene

**BOLD** = Analytical result is in exceedance of ECMC Table 915-1: Organic Compounds in Soils - Protection of Groundwater Soil Screening Level Concentrations

**BOLD** = Analytical result is in exceedance of ECMC Table 915-1: Organic Compounds in Soils - Residential Soil Screening Level Concentrations

*Italics* = Laboratory minimum detection limit exceeds the ECMC Table 915-1 standard

Pending = Analytical results pending final laboratory reporting



**TABLE 3**  
**FLANIGAN 1B-6H**  
**SOIL ANALYTICAL DATA - PAHs**  
**CRESTONE PEAK RESOURCES OPERATING, LLC**



Soil Sample Location	Depth	Date	Acenaphthene (mg/kg)	Anthracene (mg/kg)	Benzo(a)A (mg/kg)	Benzo(b)F (mg/kg)	Benzo(k)F (mg/kg)	Benzo(a)P (mg/kg)	Chrysene (mg/kg)	D (a,h) A (mg/kg)	Fluoranthene (mg/kg)	Fluorene (mg/kg)	1,2,3-CD (mg/kg)	1-M (mg/kg)	2-M (mg/kg)	Pyrene (mg/kg)
ECMC Organic Compounds in Soils - GSSL <sup>(1)</sup>			0.55	5.8	0.011	0.3	2.9	0.24	9	0.96	8.9	0.54	0.98	0.006	0.019	1.3
ECMC Organic Compounds in Soils - RSL <sup>(2)</sup>			360	1,800	1.1	1.1	11	0.11	110	0.11	240	240	1.1	18	24	180

**Notes:**

PAHs = Polycyclic Aromatic Hydrocarbons

(1) Standards for soil are taken from ECMC Table 915-1: Organic Compounds in Soils - Protection of Groundwater Soil Screening Level Concentrations (Effective January 15, 2021)

(2) Standards for soil are taken from ECMC Table 915-1: Organic Compounds in Soils - Residential Soil Screening Level Concentrations (Effective January 15, 2021)

ECMC = Colorado Energy & Carbon Management Commission

GSSL = Protection of Groundwater Screening Level

RSL = Residential Soil Screening Level

(<) = Analytical result is less than the indicated laboratory reporting limit

mg/kg = milligrams per kilogram

Benzo(a)A = Benzo(a)Anthracene

Benzo(b)F = Benzo(b)Fluoranthene

Benzo(k)F = Benzo(k)Fluoranthene

Benzo(a)P = Benzo(a)Pyrene

D (a,h) A = Dibenz(a,h)Anthracene

1,2,3-CD = Indeno(1,2,3-cd)Pyrene

1-M = 1-Methylnaphthalene

2-M = 2-Methylnaphthalene

**BOLD** = Analytical result is in exceedance of ECMC Table 915-1: Organic Compounds in Soils - Protection of Groundwater Soil Screening Level Concentrations

**BOLD** = Analytical result is in exceedance of ECMC Table 915-1: Organic Compounds in Soils - Residential Soil Screening Level Concentrations

*Italics* = Laboratory minimum detection limit exceeds the ECMC Table 915-1 standard

Pending = Analytical results pending final laboratory reporting



**TABLE 4**  
**FLANIGAN 1B-6H**  
**SOIL ANALYTICAL DATA - METALS**  
**CRESTONE PEAK RESOURCES OPERATING, LLC**



Soil Sample Location	Depth	Date	Arsenic (mg/kg)	Barium (mg/kg)	Cadmium (mg/kg)	Chromium (VI) (mg/kg)	Copper (mg/kg)	Lead (mg/kg)	Nickel (mg/kg)	Selenium (mg/kg)	Silver (mg/kg)	Zinc (mg/kg)
ECMC Metals in Soils - GSSL <sup>(1)</sup>			0.29	82	0.38	0.00067	46	14	26	0.26	0.8	370
ECMC Metals in Soils - RSL <sup>(2)</sup>			0.68	15,000	71	0.3	3,100	400	1,500	390	390	23,000
AST7-B01@6"	6"	01/29/2025	Pending	Pending	Pending	Pending	Pending	Pending	Pending	Pending	Pending	Pending
AST8-B01@6"	6"	01/29/2025	Pending	Pending	Pending	Pending	Pending	Pending	Pending	Pending	Pending	Pending
<b>BACKGROUND</b>												
BG01@4'	4'	01/03/2025	4.98	134	0.340	<0.30	6.58	<b>12.0</b>	7.58	<0.260	<b>0.0743</b>	<b>26.9</b>
BG02@4'	4'	01/03/2025	4.85	130	0.350	<0.30	6.89	11.6	8.00	<0.260	0.0533	26.2
BG01@6'	6'	01/03/2025	<b>5.25</b>	<b>142</b>	<b>0.365</b>	<0.30	<b>6.93</b>	11.4	<b>8.01</b>	<0.260	0.0518	25.7
BG02@6'	6'	01/03/2025	4.48	139	0.326	<0.30	6.43	10.1	7.51	<0.260	0.0691	24.5
<b>Highest Background @ 0 - 6' x1.25 (SW/SM)</b>			<b>6.56</b>	<b>178</b>	<b>0.456</b>	-	<b>8.66</b>	<b>15.0</b>	<b>10.0</b>	-	<b>0.0929</b>	<b>33.6</b>

**Notes:**

(1) Standards for soil are taken from ECMC Table 915-1: Metals in Soils - Protection of Groundwater Soil Screening Level Concentrations (Effective January 15, 2021)

(2) Standards for soil are taken from ECMC Table 915-1: Metals in Soils - Residential Soil Screening Level Concentrations (Effective January 15, 2021)

ECMC = Colorado Energy & Carbon Management Commission

GSSL = Protection of Groundwater Screening Level

RSL = Residential Soil Screening Level

(<) = Analytical result is less than the indicated laboratory minimum detection limit

mg/kg = milligrams per kilogram

SW = Well-Graded Sand

SM = Silty Sand

**BOLD** = Analytical result is in exceedance of ECMC Table 915-1: Metals in Soils - Protection of Groundwater Soil Screening Level Concentrations

**BOLD** = Analytical result is in exceedance of ECMC Table 915-1: Metals in Soils - Residential Soil Screening Level Concentrations

**Highest background concentration x1.25**

*Italics* = Laboratory minimum detection limit exceeds the ECMC Table 915-1 Standard

\* Result exceeded the ECMC Table 915-1 standard, but was within site-specific 1.25x background multiplier levels

Pending = Analytical results pending final laboratory reporting

**TABLE 5**  
**FLANIGAN 1B-6H**  
**SOIL ANALYTICAL DATA - SOIL RECLAMATION**  
**CRESTONE PEAK RESOURCES OPERATING, LLC**



Soil Sample Location	Depth	Date	pH	SAR	EC (mmhos/cm)	Boron (mg/L)
<b>ECMC Soil Suitability for Reclamation<sup>(1)</sup></b>			<b>6 - 8.3</b>	<b>&lt; 6</b>	<b>&lt; 4</b>	<b>2</b>
WH-B01@4'	4'	01/03/2025	<b>12.0</b>	<b>9.30</b>	1.97	<b>5.12</b>
FL-B01@6'	6'	01/03/2025	<b>8.32</b>	2.24	0.436	<2.00
FL-B02@4'	4'	01/03/2025	<b>8.63</b>	0.0725	0.139	<2.00
SEP1-B01@3"	3"	01/03/2025	7.10	4.93	2.66	<2.00
SEP1-B02@3"	3"	01/03/2025	7.84	0.808	0.541	<2.00
SEP2-B01@3"	3"	01/03/2025	7.11	<b>14.6</b>	<b>4.65</b>	<2.00
SEP2-B02@3"	3"	01/03/2025	7.94	0.390	0.341	<2.00
SEP1-B01@4'	4'	01/29/2025	Pending	Pending	Pending	Pending
SEP2-B01@4'	4'	01/29/2025	Pending	Pending	Pending	Pending
PW1-B01@4'	4'	01/29/2025	Pending	Pending	Pending	Pending
PW1-W01@2'	2'	01/29/2025	Pending	Pending	Pending	Pending
PW2-B01@4'	4'	01/29/2025	Pending	Pending	Pending	Pending
PW2-W01@2'	2'	01/29/2025	Pending	Pending	Pending	Pending
PW3-B01@4'	4'	01/29/2025	Pending	Pending	Pending	Pending
PW3-N01@2'	2'	01/29/2025	Pending	Pending	Pending	Pending
PW4-B01@4'	4'	01/29/2025	Pending	Pending	Pending	Pending
PW4-W01@2'	2'	01/29/2025	Pending	Pending	Pending	Pending
AST1-B01@6"	6"	01/29/2025	Pending	Pending	Pending	Pending
AST2-B01@6"	6"	01/29/2025	Pending	Pending	Pending	Pending
AST3-B01@6"	6"	01/29/2025	Pending	Pending	Pending	Pending
AST4-B01@6"	6"	01/29/2025	Pending	Pending	Pending	Pending
AST5-B01@6"	6"	01/29/2025	Pending	Pending	Pending	Pending
AST6-B01@6"	6"	01/29/2025	Pending	Pending	Pending	Pending
AST7-B01@6"	6"	01/29/2025	Pending	Pending	Pending	Pending
AST8-B01@6"	6"	01/29/2025	Pending	Pending	Pending	Pending
<b>BACKGROUND</b>						
BG01@4'	4'	01/03/2025	8.17	2.84	0.621	<2.00
BG02@4'	4'	01/03/2025	8.23	<b>3.94</b>	1.70	<2.00
BG01@6'	6'	01/03/2025	<b>8.25</b>	3.68	<b>2.10</b>	<2.00
BG02@6'	6'	01/03/2025	8.19	3.82	0.920	<2.00

**TABLE 5**  
**FLANIGAN 1B-6H**  
**SOIL ANALYTICAL DATA - SOIL RECLAMATION**  
**CRESTONE PEAK RESOURCES OPERATING, LLC**



Soil Sample Location	Depth	Date	pH	SAR	EC (mmhos/cm)	Boron (mg/L)
ECMC Soil Suitability for Reclamation <sup>(1)</sup>			6 - 8.3	< 6	< 4	2
Highest Background @ 0 - 6' (SW/SM)			8.25	3.94	2.10	-

**Notes:**

(1) Standards for soil are taken from ECMC Table 915-1: Soil Suitability for Reclamation (Effective January 15, 2021)

ECMC = Colorado Energy & Carbon Management Commission

(<) = Analytical result is less than the indicated laboratory reporting limit

mmhos/cm = millimhos per centimeter

mg/L = milligrams per liter

pH = Potential of Hydrogen

SAR = Sodium Adsorption Ratio

EC = Electrical Conductivity

SW = Well-Graded Sand

SM = Silty Sand

**BOLD** = Analytical result is in exceedance of ECMC Table 915-1: Soil Suitability for Reclamation Concentrations

**Highest background concentration**

\* Result exceeded the ECMC Table 915-1 standard, but was within site-specific background concentrations

Pending = Analytical results pending final laboratory reporting