

Final Reclamation Inspection

March 5, 2025

Operator: KERR MCGEE OIL & GAS ONSHORE LP - 47120

Location ID: 332516

Inspection Document #: 718800017

Weld County, CO

Katelyn Mitchem
Reclamation Specialist, ECMC



COLORADO

**Energy & Carbon Management
Commission**

Department of Natural Resources

Inspection Photos

Location Name: THOMPSON #23-6, LUCKY 2 AMOCO #34-6

Location ID: 332516

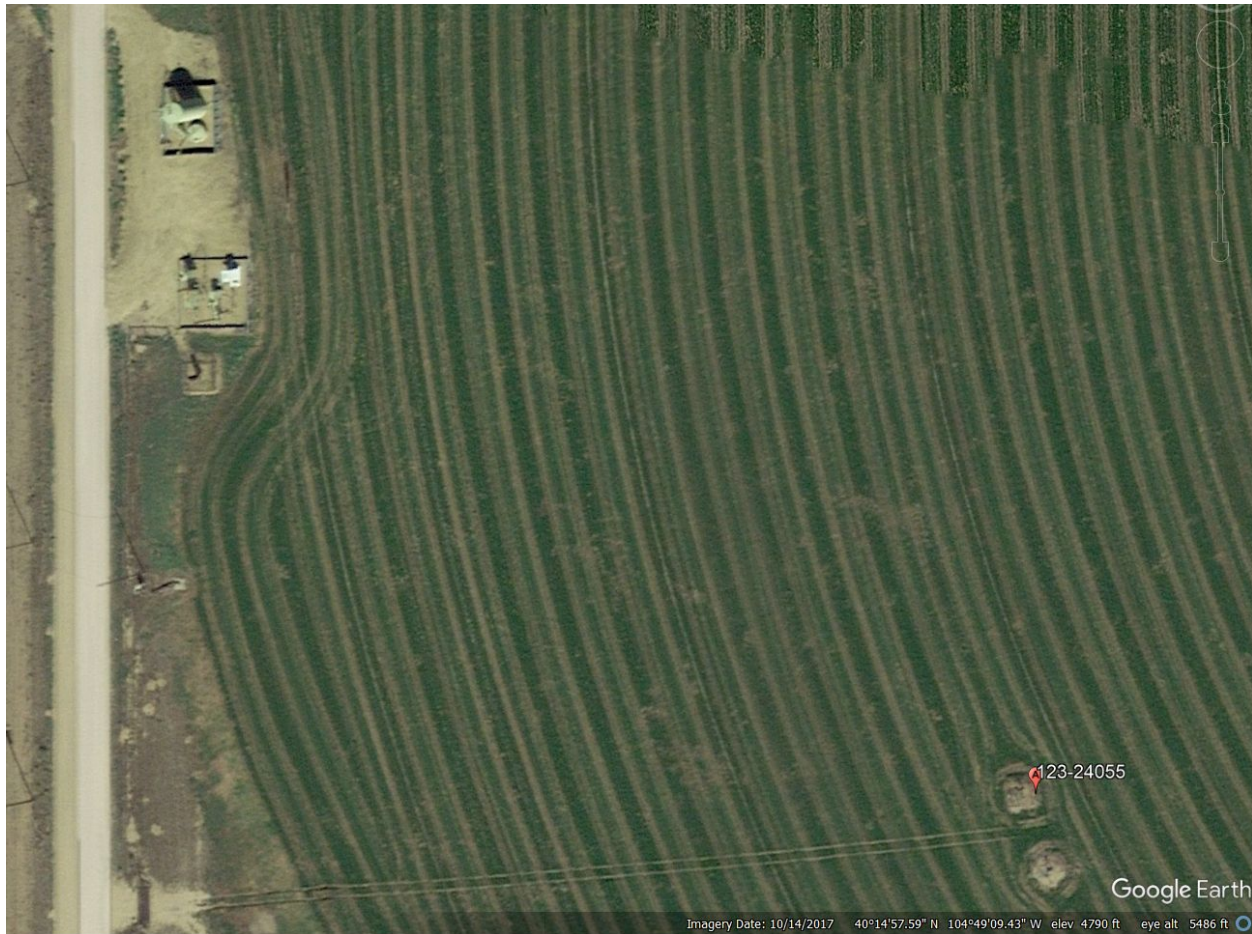


Photo 1. Google Earth aerial imagery from October 14, 2017. Photo illustrates the well location access road and associated off-location tank battery during active operations.



COLORADO
Energy & Carbon Management
Commission
Department of Natural Resources

Inspection Number: 718800017

Inspection Photos
Location Name: THOMPSON #23-6, LUCKY 2
AMOCO #34-6
Location ID: 332516

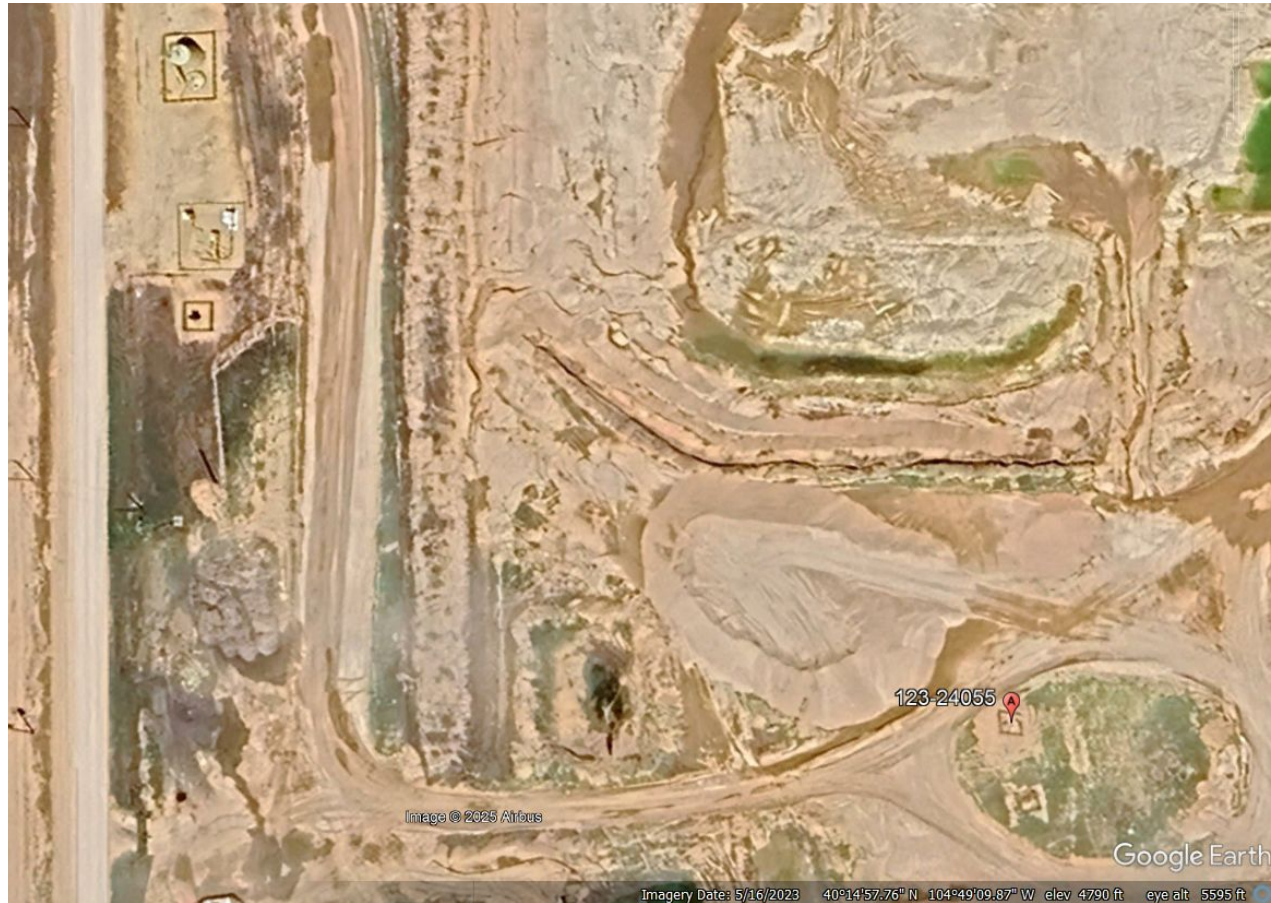


Photo 2. Google Earth aerial imagery from May 16, 2023. Photo illustrates the well location access road and associated off-location tank battery after plugging operations. The associated disturbances are now within an active gravel mine, Mine ID M2018027.

Inspection Photos
Location Name: THOMPSON #23-6
Location ID: 332516



Photo 3. Photo taken from the THOMPSON #23-6 well location, facing Southeast. Photo illustrates that all equipment and stormwater BMPs have been removed and there is no weed growth on the well location. The well location is in a land-use change to an active Gravel Mine, Mine ID M2018027.



Inspection Photos
Location Name: LUCKY 2 AMOCO #34-6
Location ID: 332516



Photo 4. Photo taken from the LUCKY 2 AMOCO #34-6 well location, facing North. See comments under photo 3.



Inspection Photos
Location Name: LUCKY 2 AMOCO #34-6
Location ID: 332516



Photo 5. Photo taken at the tank battery location, facing East. Photo illustrates that the meter house remains.



Photo 6. Photo taken from the tank battery location, facing South. Photo illustrates that reclamation has been performed, however, it appears this is being used as a storage area for mining operations.