

Well Name & API: **NC FARMS 16-32, 05-123-34782**



Flowline Abandonment Type:
Comingled flowline. Removal from well to common segment.

Flowlines

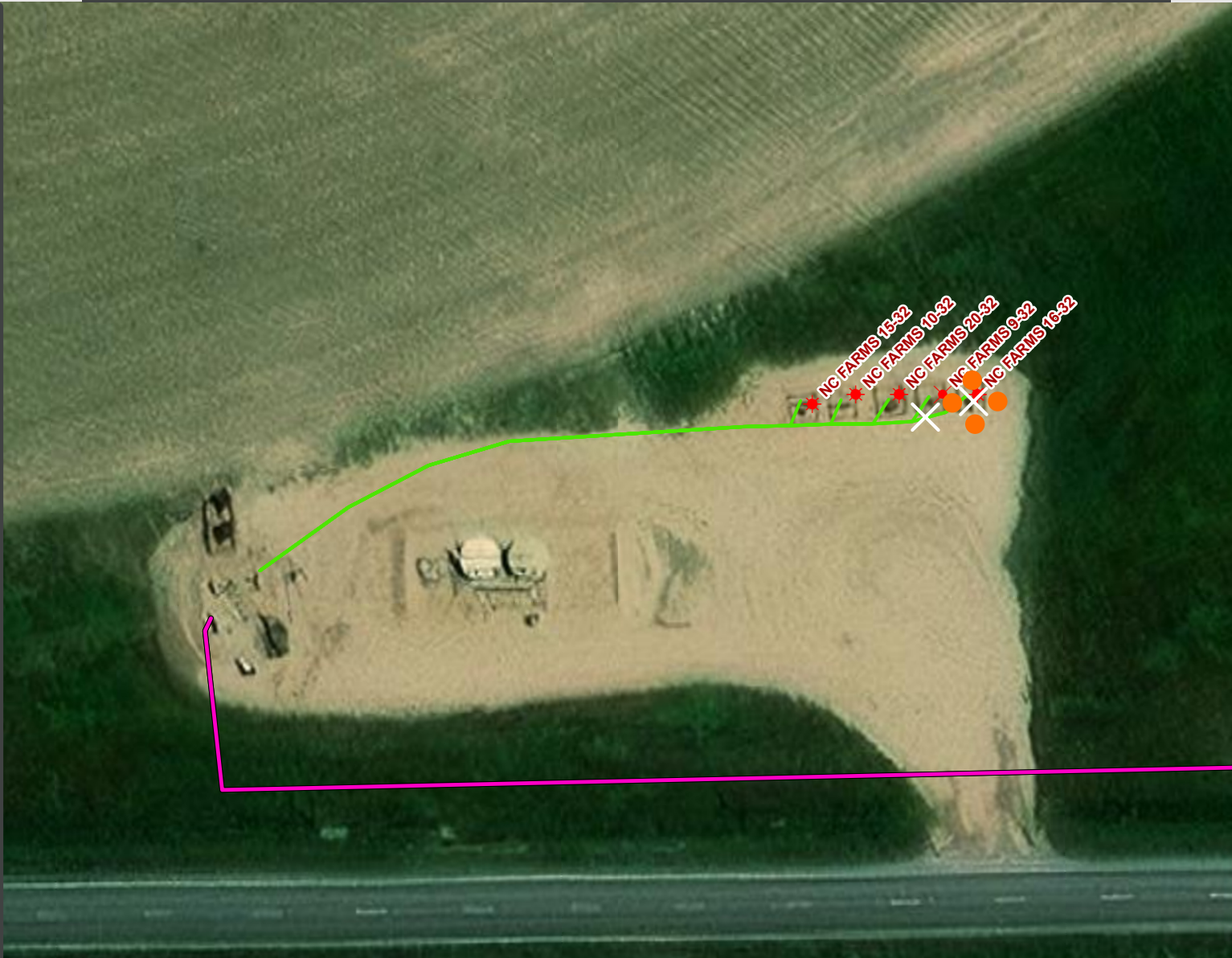
- Abandoned
- Active
- Out of Service
- Pre-Commissioned
- Removed
- Turned into Air Line
- Area of Conflict (Proposed Abandon-in-Place Area)
- Proposed Soil Sample Location
- Field Screening Location

Wells

- Active Well
- Abandoned Location
- Plugged & Abandoned
- Producing
- Shut-In
- Temporarily Abandoned
- Waiting on Completion

Third-Party Pipelines

- NWI Wetlands



Well Latitude/Longitude: 40.5228770/-104.5672840
Flowline Length (ft): 283

Flowline Point A Latitude/Longitude: 40.5228759/-104.5673009
Flowline Point B Latitude/Longitude: 40.5227013/-104.5682655

Created by: CJENCK
Date: 2/28/2025

