

WGS84 ±28ft 40.20241, -104.65907 ft ±15ft 4828 °T ±12 NW336

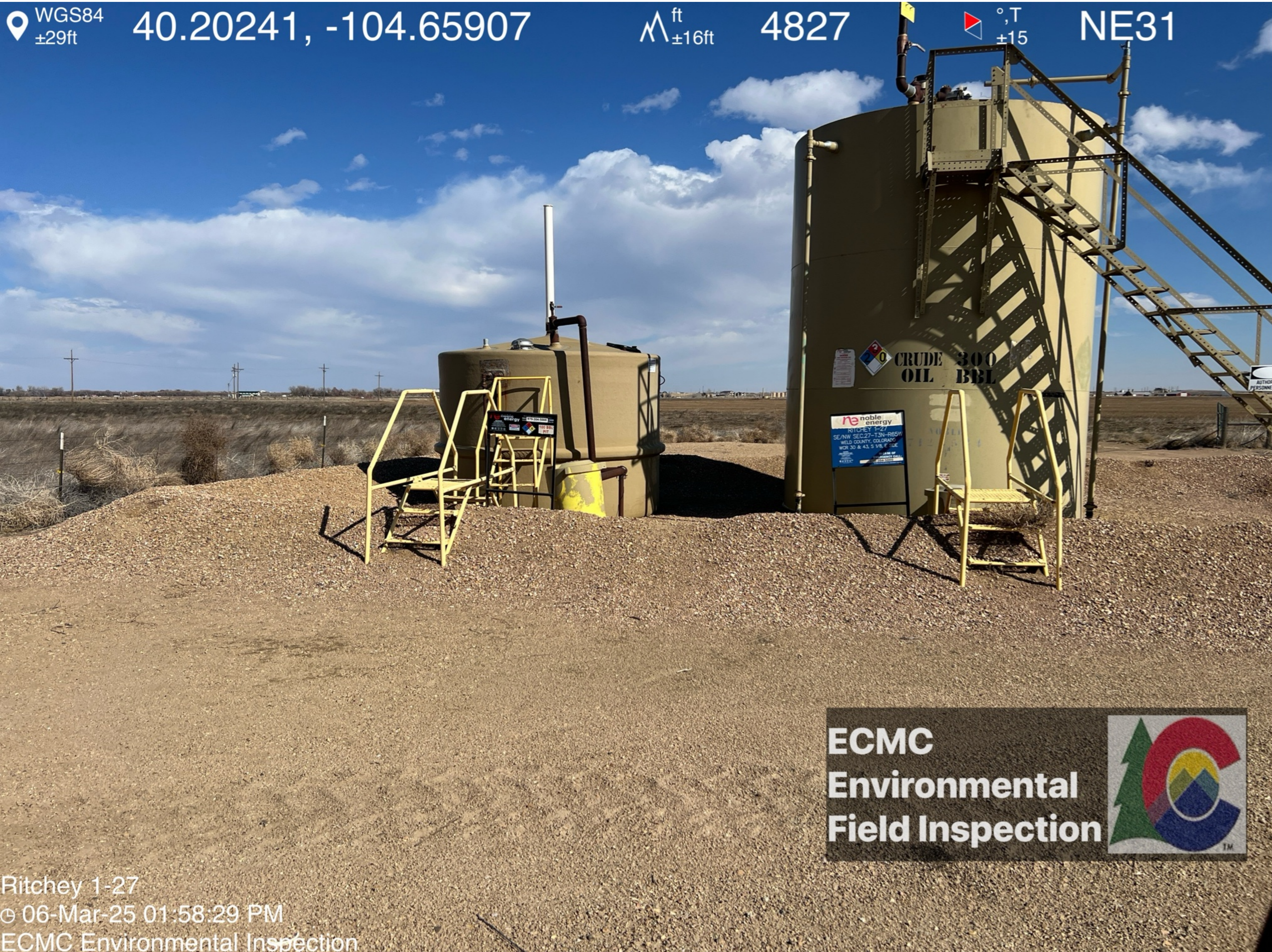


ECMC
Environmental
Field Inspection



Ritchey 1-27
© 06-Mar-25 01:58:24 PM
ECMC Environmental Inspection

WGS84 ±29ft 40.20241, -104.65907 ft ±16ft 4827 °T ±15 NE31



ECMC
Environmental
Field Inspection



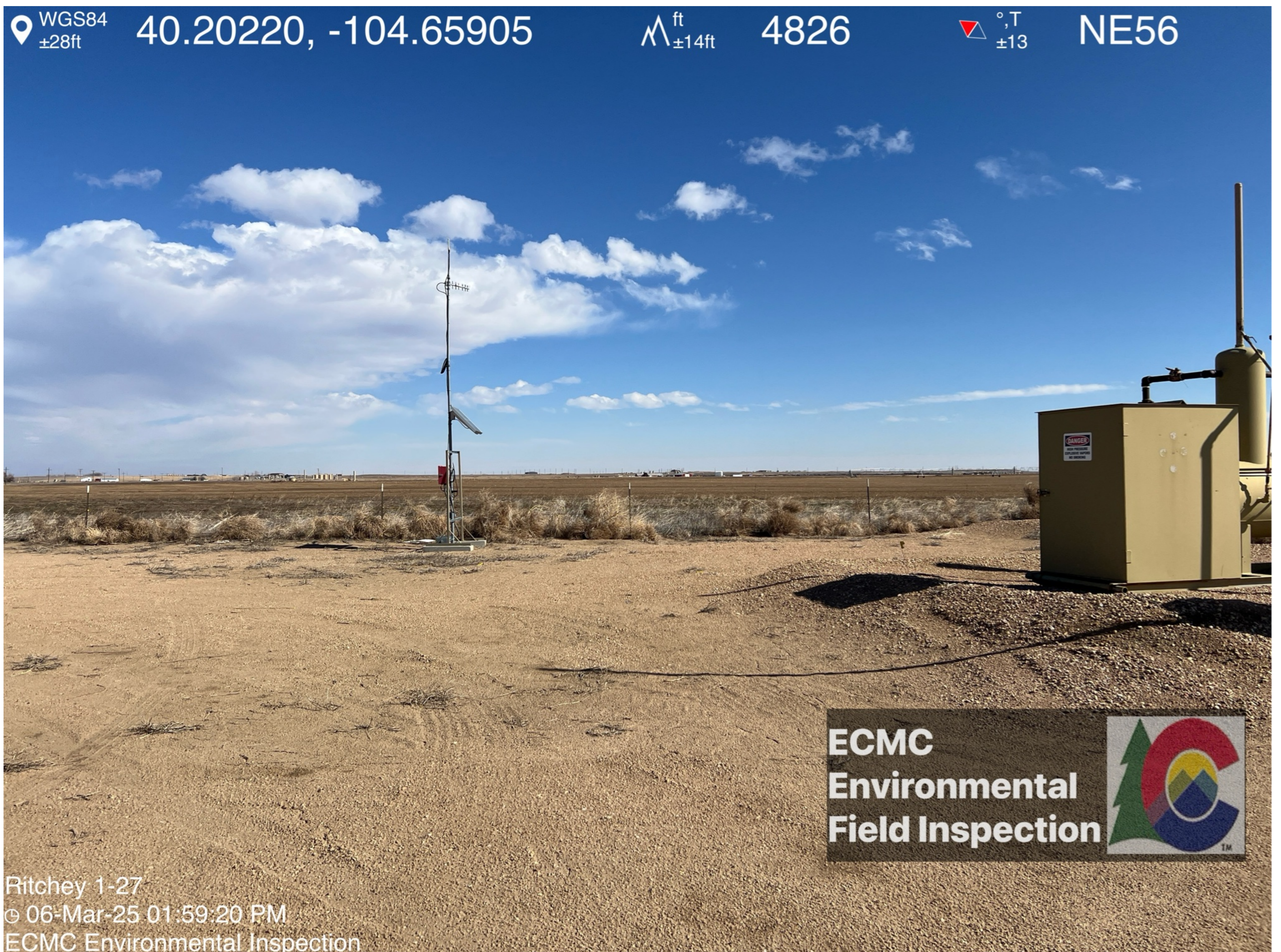
Ritchey 1-27
© 06-Mar-25 01:58:29 PM
ECMC Environmental Inspection

WGS84 ±31ft 40.20242, -104.65907 Δ ft ±18ft 4827 °T ±16 NE46



WGS84 ±28ft 40.20238, -104.65905 Δ ft ±15ft 4826 °T ±12 NE16





WGS84
±24ft

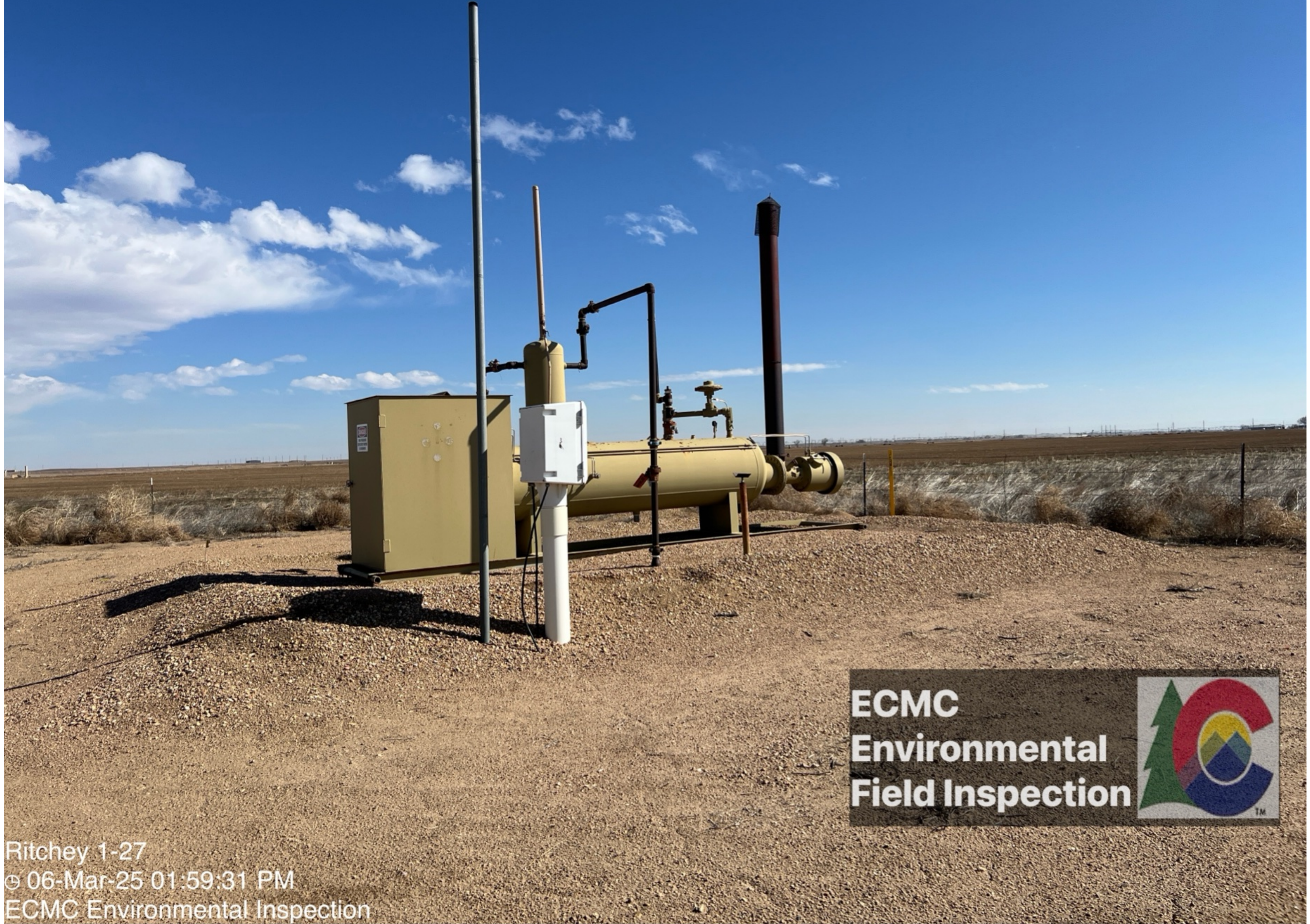
40.20216, -104.65905

ft
±12ft

4827

°T
±12

NW328



**ECMC
Environmental
Field Inspection**



Ritchey 1-27
© 06-Mar-25 01:59:31 PM
ECMC Environmental Inspection