

Well Name & API: STROH 35-1, 05-123-13883

Flowline Abandonment Type:
Full Removal



Flowlines

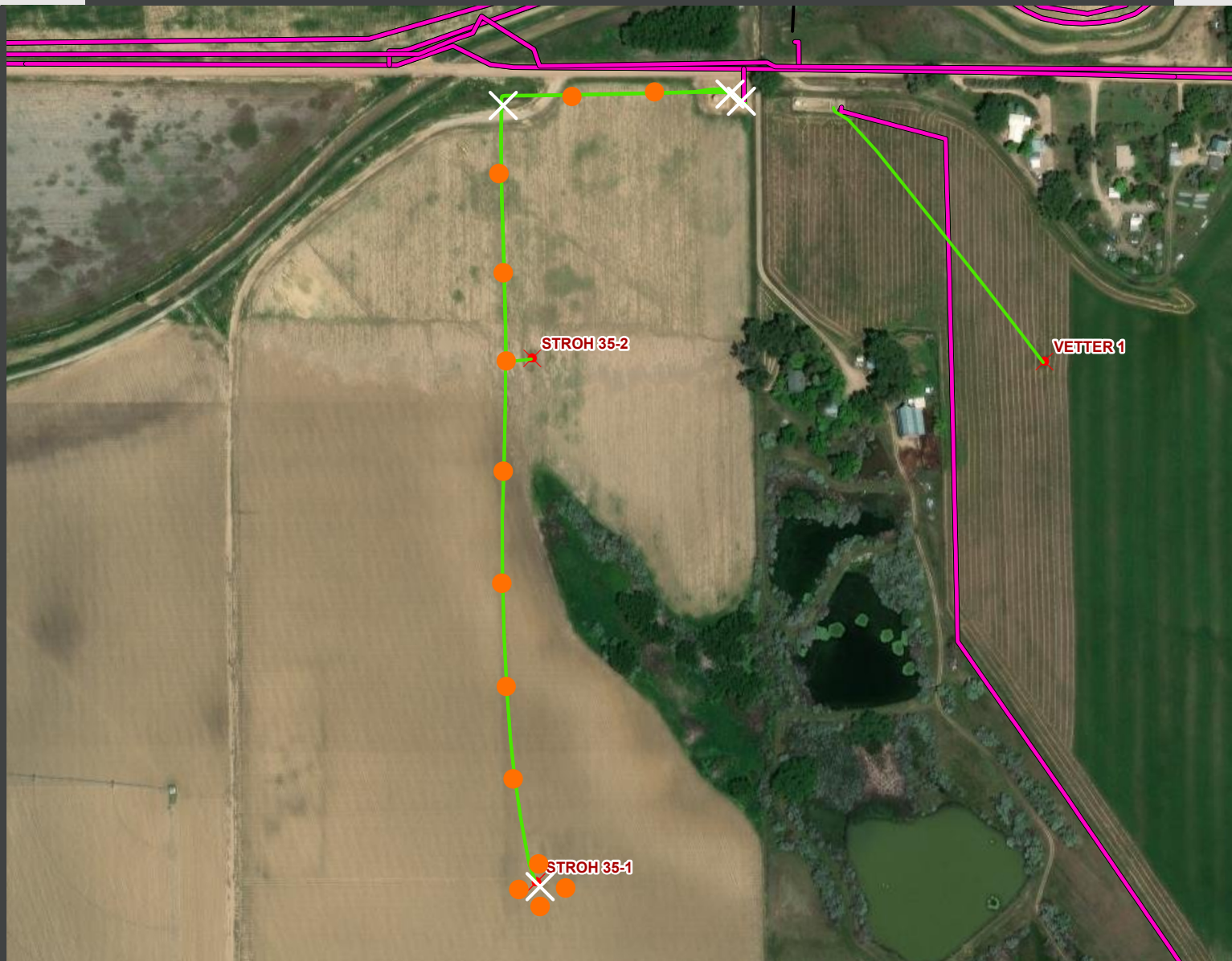
- Abandoned
- Active
- Out of Service
- Pre-Commissioned
- Removed
- Turned into Air Line
- Area of Conflict
(Proposed Abandon-in-Place Area)
- Proposed Soil Sample Location
- Field Screening Location

Wells

- Active Well
- Abandoned Location
- Plugged & Abandoned
- Producing
- Shut-In
- Temporarily Abandoned
- Waiting on Completion

Third-Party Pipelines

-
-
- NWI Wetlands



Well Latitude/Longitude: 40.3582600/-104.8575630

Flowline Length (ft): 2348

Flowline Point A Latitude/Longitude: 40.3582680/-104.8575689

Flowline Point B Latitude/Longitude: 40.3631040/-104.8558355

Created by: CJENCK

Date: 2/28/2025

