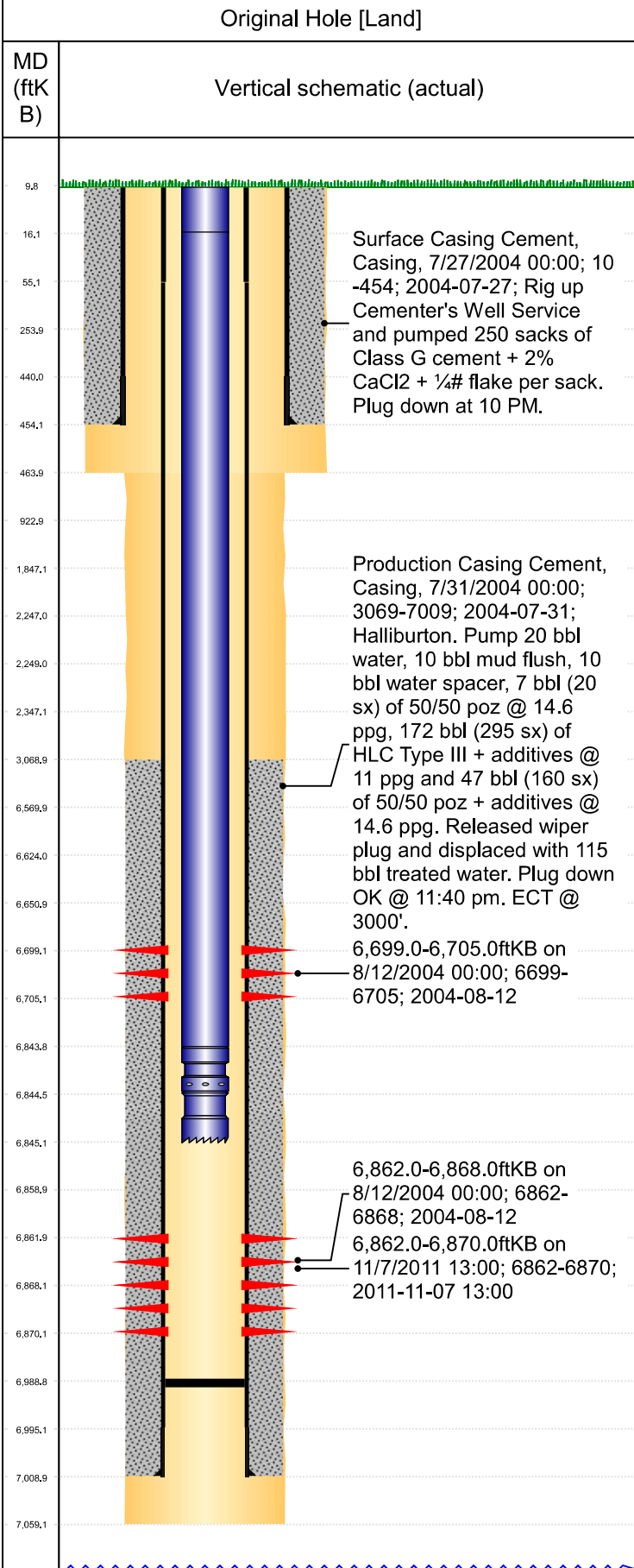




PA Wellbore For State - Vertical

Well Name: Schrant 23-12



Well Header				
Surface UWI	Business Unit	Gov Auth Dist	Prod Tree Loc	
0512322290	Rockies	Evans	Land	
Orig. KB to Gnd (ft)	Original Spud Date	Abandon Date	Well Sub-Status	High...
10.00	7/27/2004		PR	N
Comment				

Geologic Horizons	
Formation Name	Final Top MD (ftKB)
A_Sand-Top_Prod	2,367.0
Formation Name	Final Top MD (ftKB)
Upper_Pierre_Aquifer-Base_Prod	1,501.0
Formation Name	Final Top MD (ftKB)
Niobrara-Top_Prod	6,570.0

Surface Location (Congressional)								
Qtr 3	Qtr 4	Section	Twonshp	Twonsh...	Range	Rng E/...	Latitude (°)	Longitude (°)
NE	SW	12	6	N	64	W	40.4985	-104.50067

Wellbore Sections			
Section Des	Hole Size (in)	Top Depth (ftKB)	Btm Depth (ftKB)
Surface	12 1/4	10.0	464.0
Production	7 7/8	464.0	7,059.0

Casing Strings						
Csg Des	Run Date	OD (in)	Wt/Len (lb/ft)	Grade	Top Depth (MD) (ftKB)	Set Depth (MD) (ftKB)
Surface	7/27/2004	8 5/8	24.00	J-55	10	454
Production	7/31/2004	4 1/2	10.50	M-65	10	7009

Cement			
Des	Start Date	Top (ftKB)	Btm (ftKB)
	7/27/2004	10.0	454.0
	7/31/2004	3,069.0	7,009.0

Stim/Frac Summary	
Min Top Depth (ftKB)	Max Btm Depth (ftKB)
Min Top Depth (ftKB)	Max Btm Depth (ftKB)

Perforations			
Linked Zone	Date	Top Depth (ftKB)	Bottom Depth (ftKB)
Niobrara, Original Hole	8/12/2004 00:00	6,699.0	6,705.0
Codell, Original Hole	8/12/2004 00:00	6,862.0	6,868.0
Codell, Original Hole	11/7/2011 13:00	6,862.0	6,870.0

Other In Hole					
Run Date	Des	Make	OD (in)	Top (ftKB)	Btm (ftKB)

Logs			
Date	Type	Depth Top (MD) (ftKB)	Btm (ftKB)

Wellbore Plug Back Total Depths			
Date	Type	Com	PBTD (ftKB)
7/31/2004	Plug		6,989