

Company : Laramie Energy
Rig : 542
Well : CC 0697-15-03E
Field : Cascade Creek

Country : US
Field : Cascade Creek
Location : 39.526222
-108.199016
Well : CC 0697-15-03E
Company : Laramie Energy
Rig : 542

County/Parish : Garfield
State/Province : Colorado
Well ID : 05-045-24568-00-00

Latitude : 39.526222
Longitude : -108.199016
Location : CC 0697-15-03E PAD
Sect: 15 Twp: T6S Range: R97W
Permament Datum : MSL
Elev. KB : 8533
Log Measured From: RMB
Elevation 0
GL/VD : 8503

Run	1	14:25	8:15	2618	9242
Run	2	8:15	2618	9242	
Run	0	2618	9242		

Depth Logged : 1:240
Standard Depth MD : 9242.00
Slud Date : 1/11/24
TVD : 9196.8
Log Number : CC 0697-15-03E
Date Logged : 1/11/24

DISCLAIMER

KLX does not guarantee the accuracy or correctness of interpretations in or from this log. Since all interpretations are opinions based on measurements KLX shall under no circumstance be responsible for consequential damages or and other loss, cost or expense incurred or sustained in connection with the use of such interpretations.

LOGGING SUMMARY

Log Run	1
Bit Run	1
Hole Size (in)	8.75
Sensor Suite	WPR

Measured Depth

In Hole From	2570.03
In Hole To	9242
Log From	2570.03
Log To	9154.00

Date/Time

In Hole Date	2024-11-12
In Hole Time	11:48:32
Out Hole Date	2024-11-16
Out Hole Time	17:12:45
Begin Log Date	2024-11-12
Begin Log Time	13:48:31
End Log Date	2024-11-16
End Log Time	17:12:44

DRILLING FLUID SUMMARY

Mud Type	YBM
Density (lb/gal)	9.20
Funnel Viscosity	96
Plastic Viscosity	16
Chlorides	800
Oil/Water Ratio	0
Maximum Circ Temp (F)	149

CORRECTIONS

Log Run	1
Bit Run	1
Start Date/Time	2024-11-12 11:49:33
Start Depth (ft)	2570.03
End Date/Time	2024-11-16 17:33:21
End Depth (ft)	9242

Gamma Ray Corrections

Collar Correction	2.228
Mud Density (lb/gal)	9
Mud Correction	1.434
Calibration	1.35
%K	0

WPR Corrections

Effective Hole Diam (in)	8.75
Surface Rm (ohm-m)	3.5
Surface Mud Temp (F)	85
Bottom Hole Circ Temp (F)	149
Rm @ BHT	2.061

EQUIPMENT

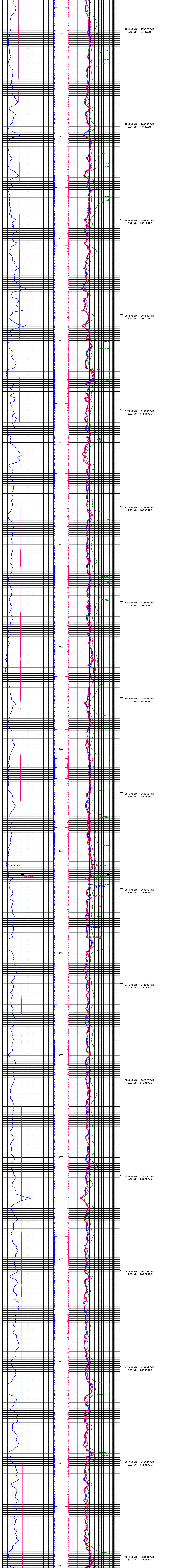
Log Run	1
Bit Run	1
Start Date/Time	2024-11-12 11:48:32
Start Depth (ft)	2570.03
End Date/Time	2024-11-16 17:12:45
End Depth (ft)	9242

Serial Numbers

Surface Gear	
Flow Sub	
Pulsar	
Battery 1	
Battery 2	
Turbine Alternator	
Directional Sensor	
Gamma Sensor	889
WPR Sensor	
Vibration Sensor	

Sensor Offsets To Bit

Directional (ft)	
WPR (ft)	88.28
PWD (ft)	
Vibration (ft)	



Resistivity Compensation Temperature
TRMRAC
F (1.00 ft Smoothing) 300

Conductivity Phase Diff. BHC 400 kHz Long
RACECLM
mmho (0.20 ft Smoothing) 1000

Directional Surveys
7.95 INC. 349.51 AZC

2707.00 MD, 2700.84 TVD
8.61 INC. 4.71 AZC

2801.00 MD, 2793.79 TVD
8.57 INC. 4.10 AZC

2895.00 MD, 2886.80 TVD
8.04 INC. 0.76 AZC

2990.00 MD, 2981.05 TVD
6.42 INC. 356.19 AZC

3084.00 MD, 3074.42 TVD
6.81 INC. 354.17 AZC

3178.00 MD, 3167.86 TVD
5.63 INC. 354.69 AZC

3273.00 MD, 3262.26 TVD
7.29 INC. 345.82 AZC

3367.00 MD, 3356.42 TVD
6.09 INC. 351.18 AZC

3462.00 MD, 3449.48 TVD
8.00 INC. 346.61 AZC

3556.00 MD, 3542.66 TVD
7.16 INC. 349.24 AZC

3651.00 MD, 3636.79 TVD
6.35 INC. 348.96 AZC

3745.00 MD, 3729.85 TVD
7.25 INC. 346.19 AZC

3839.00 MD, 3823.25 TVD
6.37 INC. 346.08 AZC

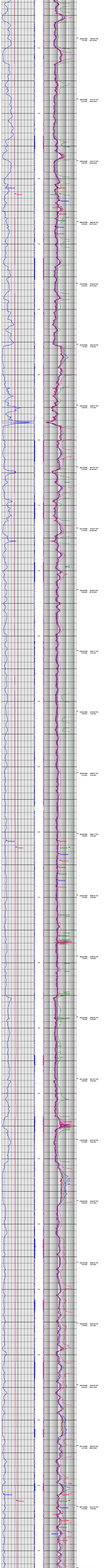
3934.00 MD, 3917.46 TVD
8.40 INC. 350.70 AZC

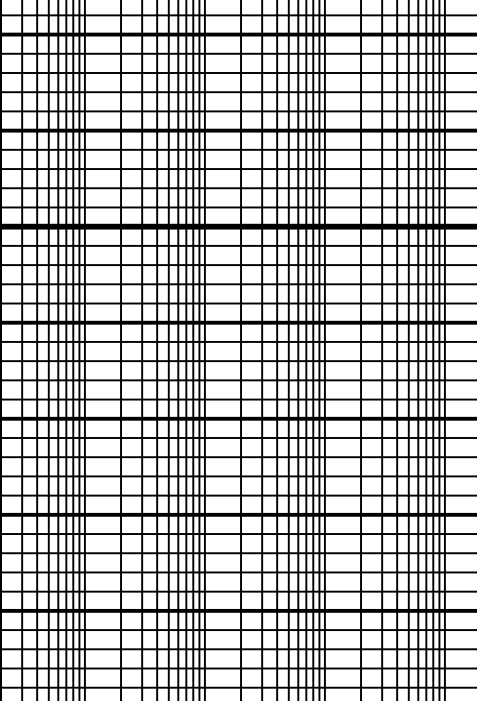
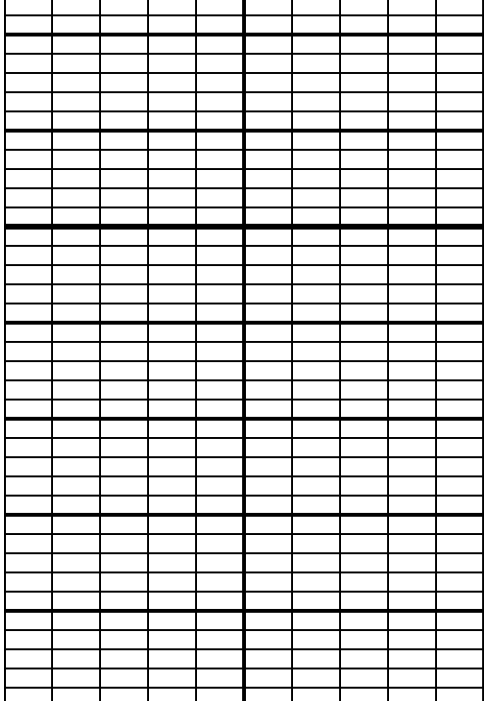
4028.00 MD, 4010.59 TVD
7.20 INC. 349.20 AZC

4123.00 MD, 4104.61 TVD
8.23 INC. 352.67 AZC

4217.00 MD, 4197.45 TVD
8.83 INC. 351.88 AZC

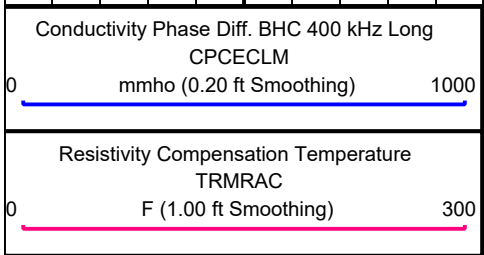
4311.00 MD, 4290.41 TVD
8.22 INC. 351.35 AZC



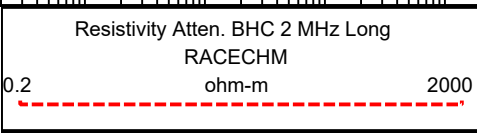


9190.00 MD, 9144.95 TVD
4.39 INC, 258.01 AZC

9200



1:240
FEET
TVD



Directional Surveys

