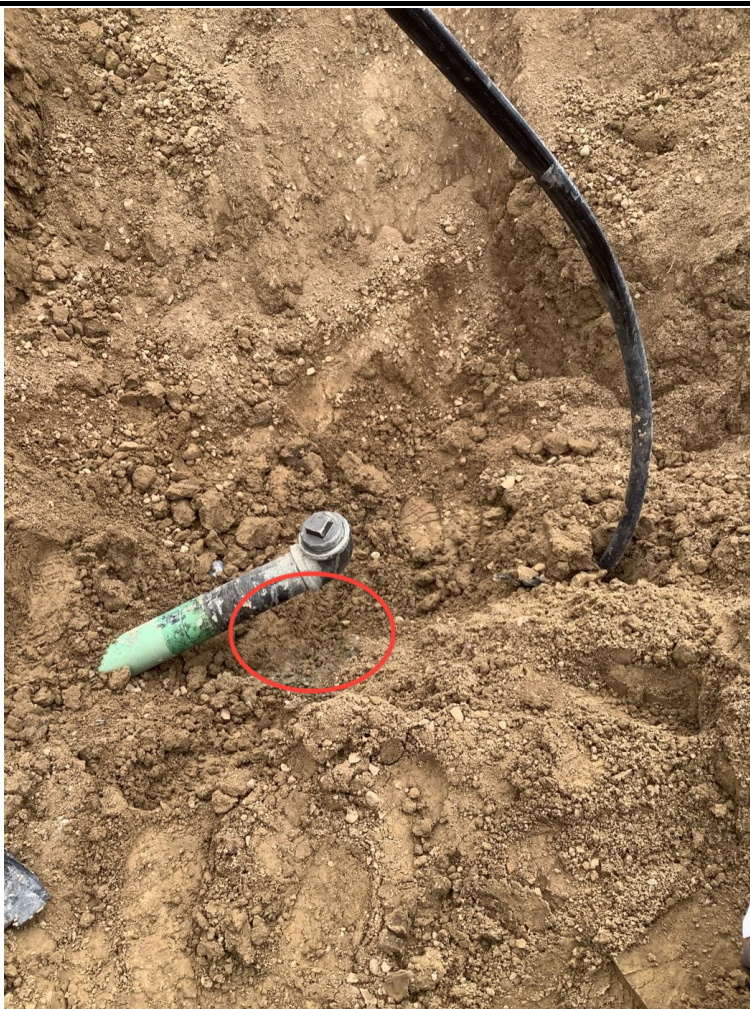




SITE NAME: Feuerstein I28-63-1HN							DATE: 5/6/2024	REM. PROJECT #: 33105	WEATHER: 50s sunny/windy	
SITE DIRECTIONS: CR29/CR64, 0.1N, 0.1E into							CLIENT: Noble			
LEGALS AND LAT/LONG: 40.456706, -104.791279							TASMAN PERSONNEL: David Vigil			
SOIL TYPES: Silty Sand - SM							SURFACE GRADIENT: East			
SOIL SAMPLING							FACILITY INFRASTRUCTURE			
Date/Time	Soil Sample ID	PID (ppm)	Visual	Olfactory	Photo?	Grab or Lab Sample?	EQUIPMENT		Quantity	
							Above Ground Storage Tank (AST)			
5/6/2024 11:55	FLR01-S @ 4'	0.0	No Staining	No Odor	Yes	Lab	Buried or Partially Buried Vessel			
5/6/2024 12:25	FLR01-W @ 4'	0.1	No Staining	No Odor	Yes	Lab	Separator			
							Emission Control Device (ECD)			
							Dump Line			
							Wellhead			
							Flowline		1	
							Other:			
							Soil Loads Removed			
							IMPACTED SOIL IDENTIFIED?			
							ESTIMATED VOLUME OF IMPACTS:			
							Date		Number	CY
							Total Removed		0	0
							Disposal Facility:			
							Groundwater Recovery			
							DATE GW ENCOUNTERED:		DEPTH:	
							GROUNDWATER IN CONTACT WITH IMPACTED SOIL?			
							LNAPL OR SHEEN OBSERVED ON GW?			
GROUNDWATER SAMPLING							Date		BBLS	
Date/Time	Groundwater Sample ID	Depth Collected	Turbid?	Sheen?	Odor?	Photo?				
							Total Removed		0	
							Disposal Facility:			



Equipment ID:FLR01-S @ 4'

Equipment Type:

Material:

Volume:

Contents:

Notes/Conditions: East facing
(Separator flowline riser) n



Equipment ID:FLR01-W @ 4'

Equipment Type:

Material:

Volume:

Contents:

Notes/Conditions: South facing
(Wellhead flowline riser)

TABLE 1
SOIL SAMPLE LOCATIONS
NOBLE ENERGY, INC. (100322) - FEURSTEIN I28-63-1HN

Soil Sample ID	Date	PID (ppm)	Visual	Olfactory	Sample Type (Grab/Lab)	Latitude ¹	Longitude	PDOP
FLR01-S@4'	05/06/24	0.0	No Staining	No Odor	Lab	40.454243	-104.789468	1.3
FLR01-W@4'	05/06/24	0.1	No Staining	No Odor	Lab	40.456717	-104.791458	0.8

Notes:

PID = Photoionization detector

ppm = parts per million

PDOP = Position dilution of precision

1.) Latitude and longitude coordinates will be provided in decimal degrees with an accuracy and precision of 6 decimals of a degree using the North American Datum ("NAD") of 1983

TABLE 2
SOIL ANALYTICAL DATA
NOBLE ENERGY, INC. (100322) - FEURSTEIN I28-63-1HN

Soil Sample ID	Date	¹ Benzene (mg/kg)	Toluene (mg/kg)	Ethylbenzene (mg/kg)	Total Xylenes (mg/kg)	1,2,4 - TMB (mg/kg)	1,3,5 - TMB (mg/kg)	Naphthalene (mg/kg)	TPH-GRO (mg/kg)	TPH-DRO (mg/kg)	TPH-ORO (mg/kg)	Acenaphthene (mg/kg)	Anthracene (mg/kg)	Benz(a) (mg/kg)	Benzo(a) (mg/kg)	Benzo(b) (mg/kg)	Benzo(k) (mg/kg)	Chrysene (mg/kg)	A,H (mg/kg)	Fluoranthene (mg/kg)	Fluorene (mg/kg)	1,2,3-CD (mg/kg)	Pyrene (mg/kg)	1-M (mg/kg)	2-M (mg/kg)
Residential SSL ²		1.2	490	5.8	58	30	27	2	500			360	1,800	1.1	0.11	1.1	11	110	0.11	240	240	1.1	180	18	24
Protection of Groundwater SSL ^{2,3}		0.0026	0.69	0.78	9.9	0.0081	0.0087	0.0038	500			0.55	6	0.011	0.24	0.3	2.9	9	0.096	8.9	0.54	0.98	1.3	0.006	0.019
FLR01-S@4'	05/06/24	<0.0020	<0.0050	<0.0050	<0.010	<0.0050	<0.0050	<0.0038	<50	<0.50	<50	<0.00500	<0.00500	<0.00500	<0.00500	<0.00500	<0.00500	<0.00500	<0.00500	<0.00500	<0.00500	<0.00500	<0.00500	<0.00500	<0.00500
FLR01-W@4'	05/06/24	<0.0020	<0.0050	<0.0050	<0.010	<0.0050	<0.0050	<0.0038	<50	<0.50	<50	<0.00500	<0.00500	<0.00500	<0.00500	<0.00500	<0.00500	<0.00500	<0.00500	<0.00500	<0.00500	<0.00500	<0.00500	<0.00500	<0.00500

Soil Sample ID	Date	pH	SAR	EC (mmhos/cm)	Boron (mg/L)
SSR ^{1,2}		6 - 8.3	<6	<4mmhos/cm	2
FLR01-S@4'	05/06/24	8.56	0.0429	0.185	<2.00
FLR01-W@4'	05/06/24	8.69	0.112	0.166	<2.00

Sample ID	Date Sampled	Arsenic (mg/kg)	Barium (mg/kg)	Cadmium (mg/kg)	Chromium (VI) (mg/kg)	Copper (mg/kg)	Lead (mg/kg)	Nickel (mg/kg)	Selenium (mg/kg)	Silver (mg/kg)	Zinc (mg/kg)
Residential SSL ^{1,2}		0.68	15,000	71	0.3	3,100	400	1,500	390	390	23,000
Protection of Groundwater SSL ^{1,2,3}		0.29	82	0.38	0.00067	46	14	26	0.26	0.8	370
FLR01-S@4'	05/06/24	4.45	93.9	<0.200	<0.30	6.22	6.39	8.14	<0.260	0.0323	18.6
FLR01-W@4'	05/06/24	5.13	250	0.252	<0.30	10.8	7.76	9.99	<0.260	0.0426	20.10

Notes:

1. Compounds referenced from 2 CCR 404-1, Table 915-1, effective January 15, 2021.

2. Soil Screening Levels (SSL) and Soil Suitability for Reclamation (SSR) standards referenced from EPA Regional Screening Levels (EPA RSLs) for Chemical Contaminants at Superfund Sites, effective November 2020.

3. SSLs are applicable if a pathway for communication with groundwater is present.

Definitions:

ECMC = Colorado Energy and Carbon Management Commission

TPH-GRO = Total petroleum hydrocarbons - gasoline range organics

TPH-DRO = Total petroleum hydrocarbons - diesel range organics

TPH-ORO = Total petroleum hydrocarbons - oil range organics

mg/kg = Milligrams per kilogram

SAR = Sodium Adsorption Ratio

EC = Electrical Conductivity

mmhos/cm = Millimhos per centimeter

mg/L = Milligrams per liter

< = Analytical result is less than the indicated laboratory reporting limit

Highlighted results are equal to or exceed the ECMC Table 915-1 standard

1,2,4 - TMB = 1,2,4 Trimethylbenzene

1,3,5 - TMB = 1,3,5 Trimethylbenzene

Benzo(a) = Benzanthrane

Benzo(b) = Benzofluoranthene

Benzo(k) = Benzofluoranthene

Benzo(a) = Benzopyrene

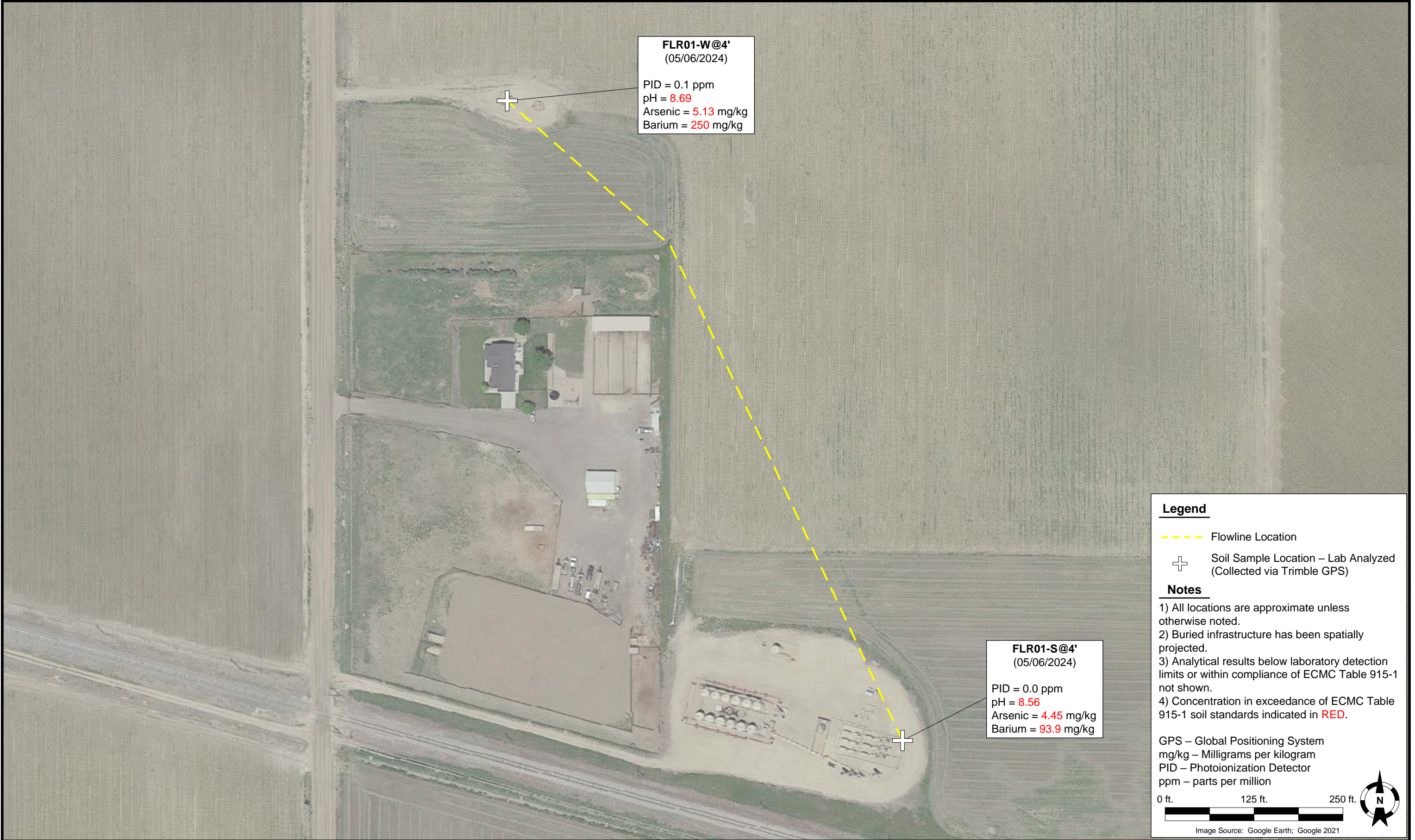
A,H = Dibenzoanthracene


1,2,3-CD = Indenopyrene

1-M = 1-methylnaphthalene

2-M = 2-methylnaphthalene

NA = Not analyzed



DATE:	06/14/2024	 TASMAN Tasman, Inc. 6855 W 119 th Avenue Broomfield, CO 80020	Noble Energy, Inc. (100322) – DJ Basin Fuerstein I28-63-1HN NWSW, Section 28, Township 6 North, Range 66 West Weld County, Colorado	Flowline Closure & Soil Analytical Results Map (05/06/2024)	FIGURE 1
DESIGNED BY:	JW				
DRAWN BY:	MW				