

Final Reclamation Inspection

March 5, 2025

Operator: KERR MCGEE OIL & GAS ONSHORE LP - 47120

Location ID: 329082

Inspection Document #: 718800013

Weld County, CO

Katelyn Mitchem
Reclamation Specialist, ECMC



COLORADO

**Energy & Carbon Management
Commission**

Department of Natural Resources

Inspection Photos
Location Name: THOMPSON #43-6
Location ID: 329082

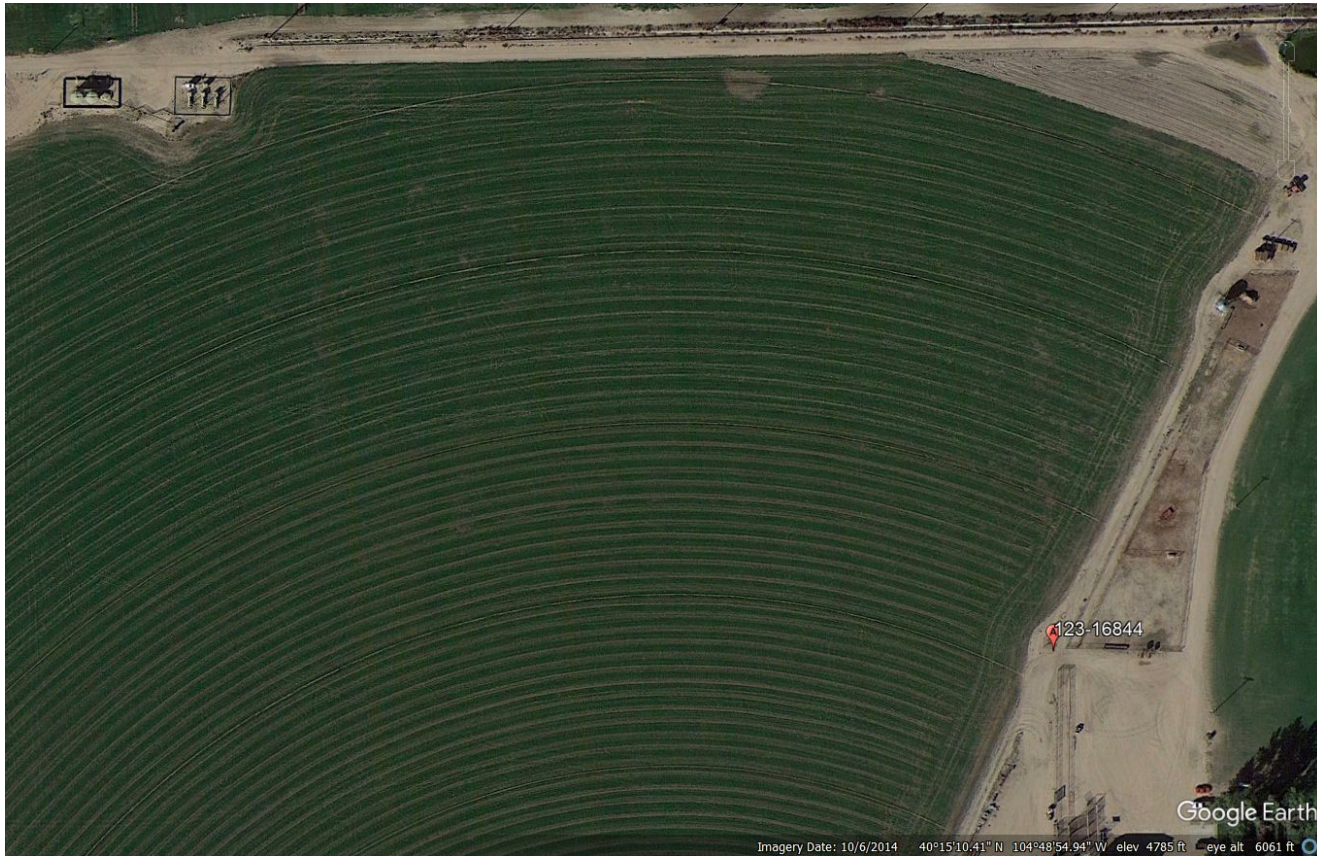


Photo 1. Google Earth aerial imagery from October 6, 2014. Photo illustrates the well location access road and associated off-location tank battery during active operations.

Inspection Photos
Location Name: THOMPSON #43-6
Location ID: 329082

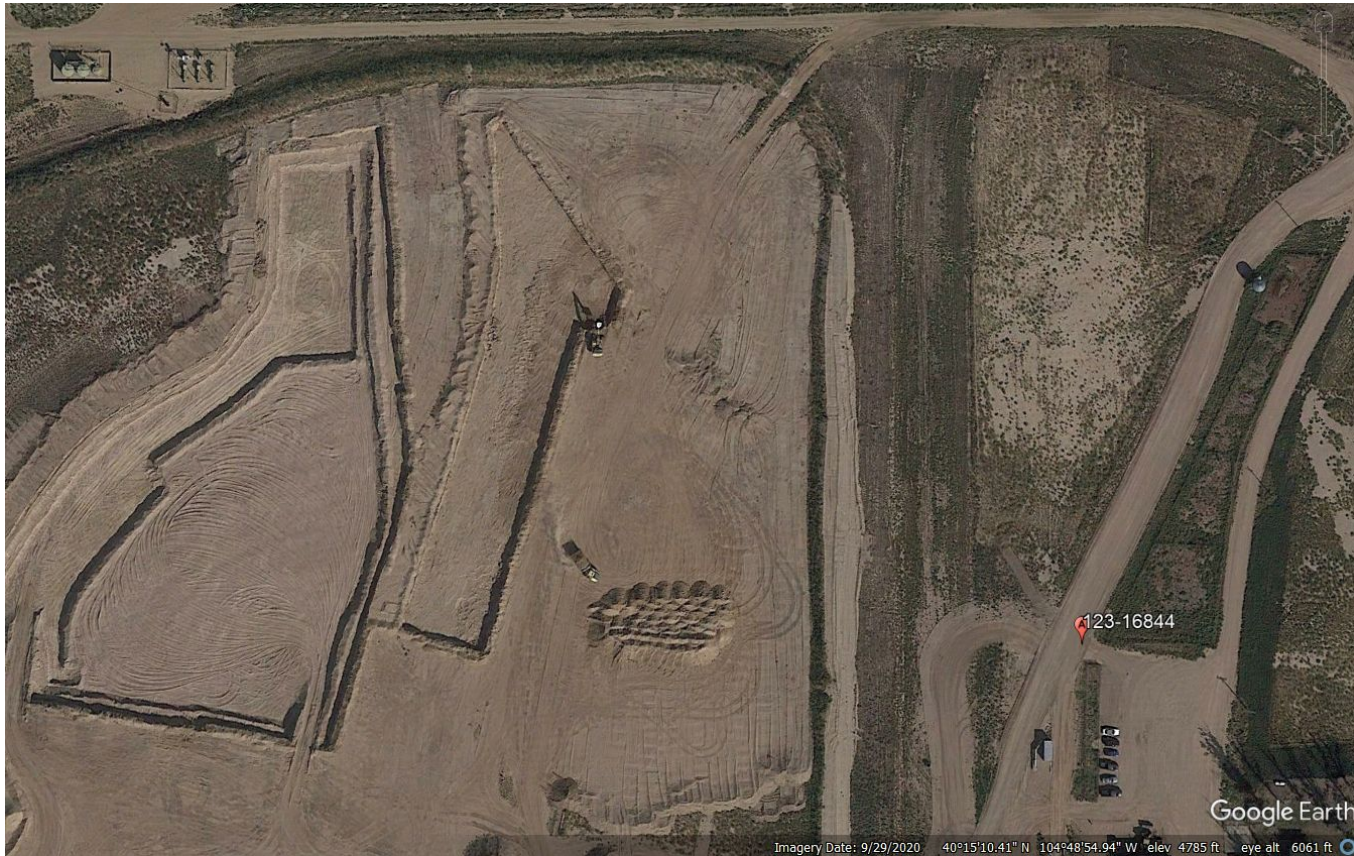


Photo 2. Google Earth aerial imagery from September 29, 2020. Photo illustrates the well location access road and associated off-location tank battery after plugging operations. This illustrates a land-use change from cropland to a gravel mine.



Inspection Photos
Location Name: THOMPSON #43-6
Location ID: 329082



Photo 3. Photo taken of the well location, facing North. Photo illustrates that all equipment and stormwater BMPs have been removed and there is no weed growth on the well location. The well location is in a land-use change to an active Gravel Mine, Mine ID M2018027.

