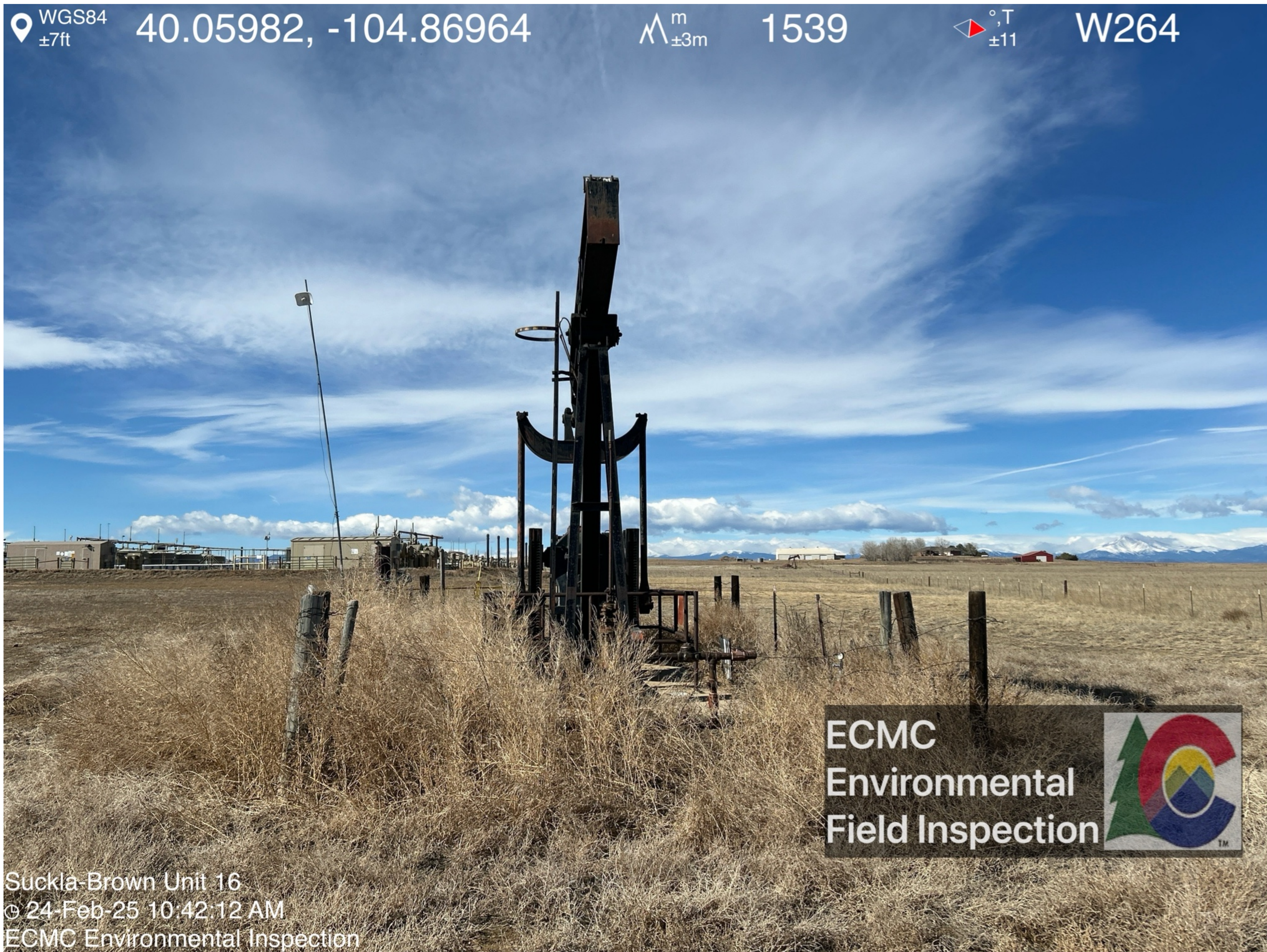


Signage with emergency contact number is visible.



Weeds surround wellhead. Pumping unit is disassembled and does not appear operational.

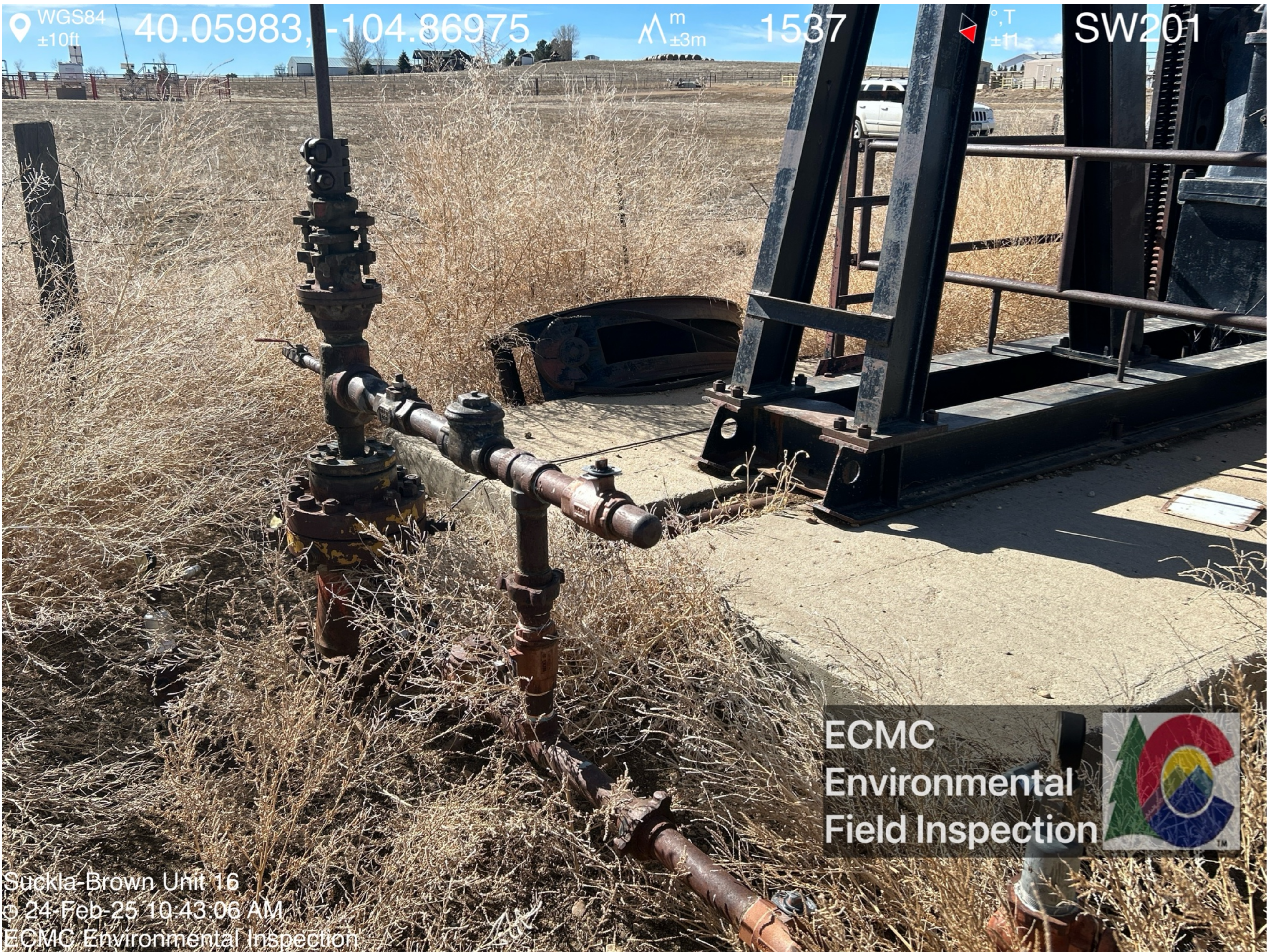




Pumping unit components visible on the ground surface adjacent to the wellhead.



Weeds surround the wellhead.

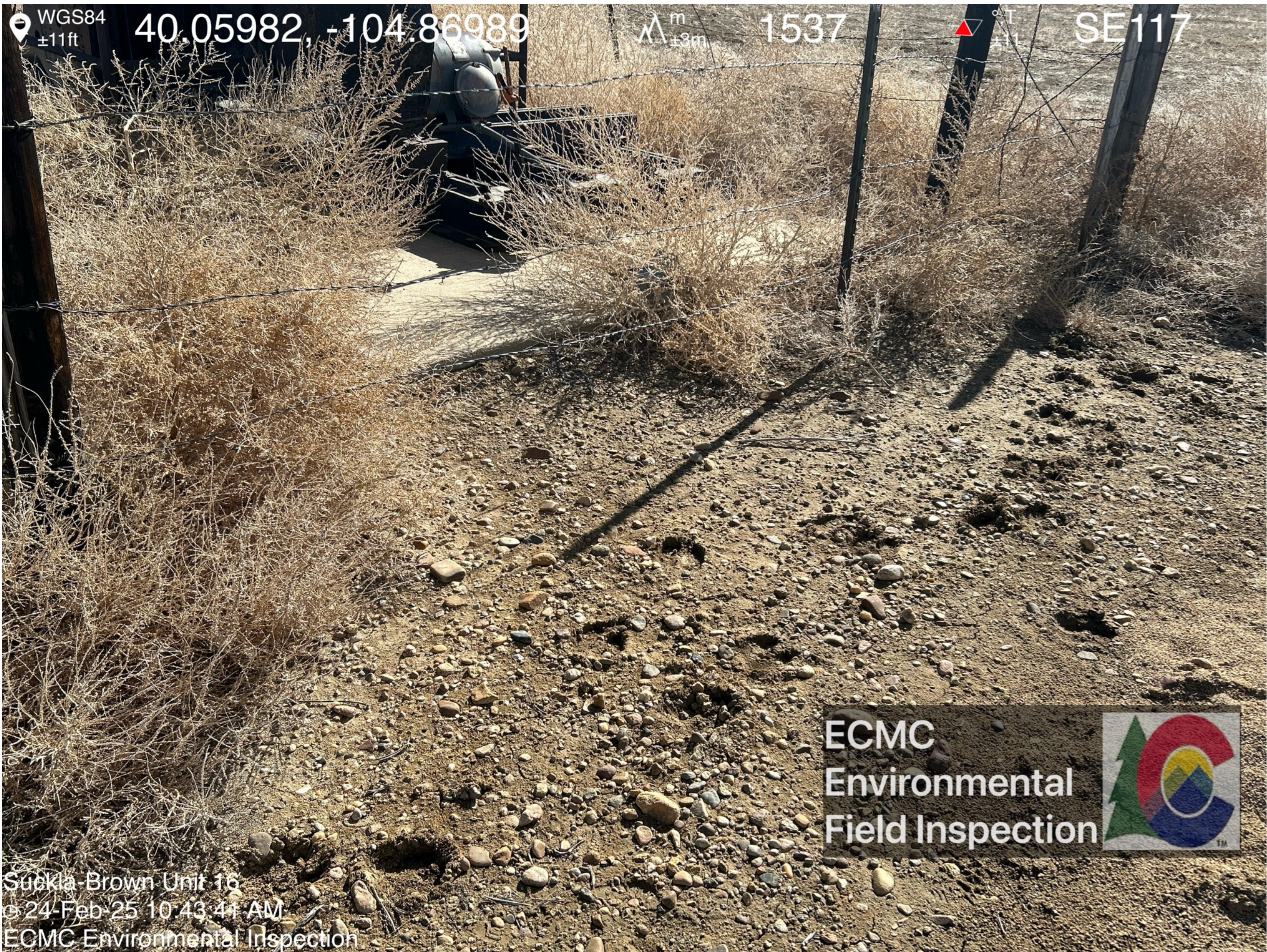




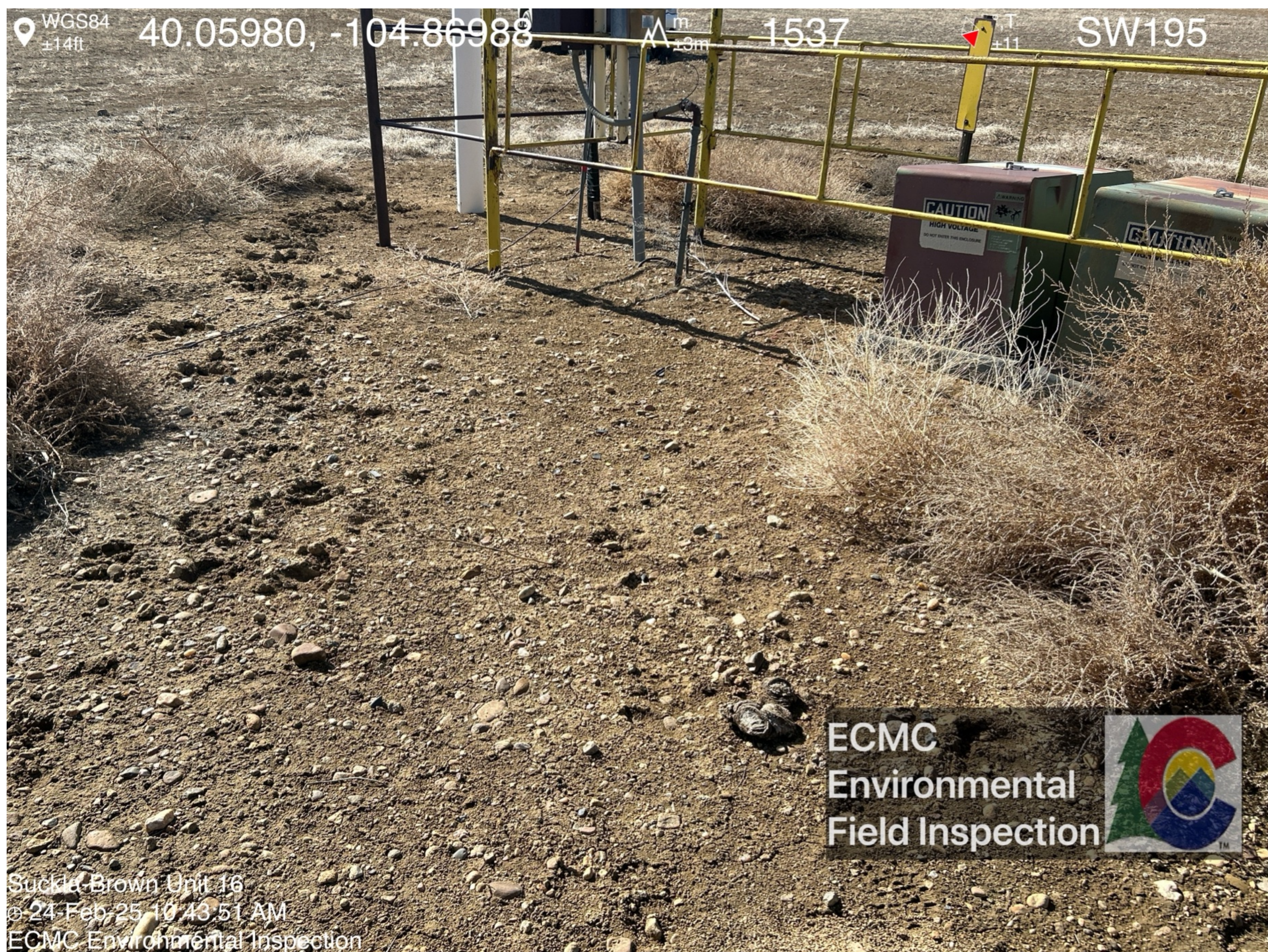
Pumping unit does not appear operational.



Livestock footprints visible adjacent to the wellhead.







Animal scat observed adjacent to the wellhead.





Weeds surround the wellhead.

