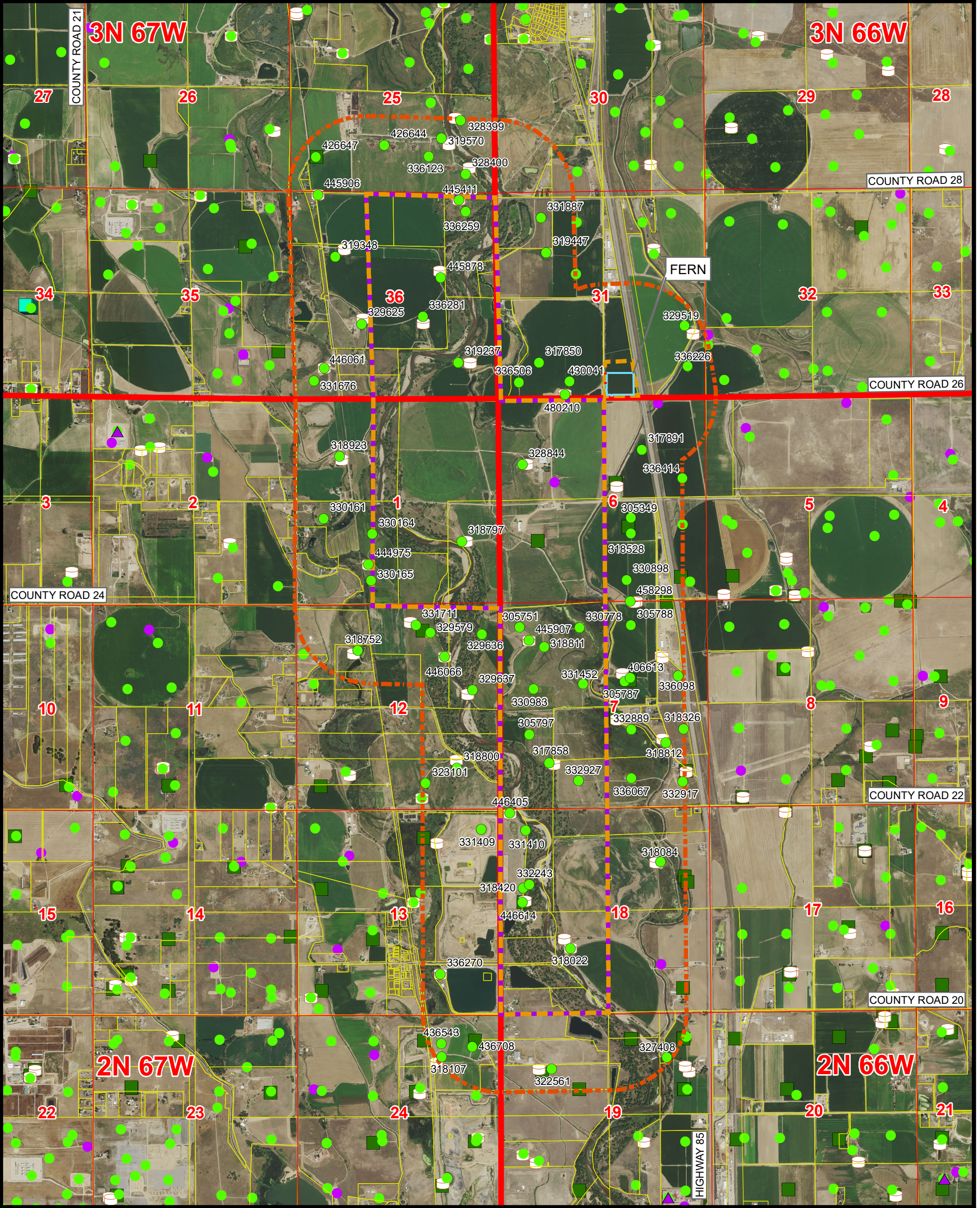


# FERN OGDG RELATED LOCATION & FLOWLINE MAP

## FERN

SECTION 31, TOWNSHIP 3 NORTH, RANGE 66 WEST, 6TH P.M., WELD COUNTY, COLORADO



K:\ANADARKO\2023\2023\_173\_FERN\_T3N\_R66W\_SEC\_31\GIS\FORM\_2A\MAPS\FERN\_RELATED\_LOCATION\_FLOWLINE\_MAP.mxd 8/23/2024 2:45:58 PM

### Legend

- - - PROPOSED ACCESS ROAD
- PROPOSED WORKING PAD SURFACE
- PROPOSED OGDP BOUNDARY
- PROPOSED MINERAL BOUNDARY
- 2000' BUFFER - PROPOSED OGDP BOUNDARY
- PARCEL BOUNDARY
- ACTIVE LOCATION
- VISIBLE LOCATION ON AERIAL NOT IN ECMC GIS
- ◆ PENDING LOCATION PERMIT (FORM 2A)
- APPROVED LOCATION PERMIT (FORM 2A)
- APPROVED WELL PERMIT (FORM 2)
- PENDING WELL PERMIT (FORM 2)
- ▲ WELD OIL AND GAS LOCATION ASSESSMENT (WOGLA)
- TANK BATTERY
- CLOSED PIT

NOTE: THIS MAP IS A COMPILATION OF PUBLICLY AVAILABLE DATA. THE ACCURACY AND COMPLETENESS OF SAID DATA HAS NOT BEEN VERIFIED BY 609 CONSULTING, LLC. EXISTING CONDITIONS MAY DIFFER FROM WHAT IS SHOWN.

**Kerr-McGee Oil & Gas Onshore LP**  
 1099 18th Street  
 Denver, Colorado 80202



**LOVELAND OFFICE**  
 6706 North Franklin Avenue  
 Loveland, Colorado 80538  
 Phone 970-776-4331

**SHERIDAN OFFICE**  
 1095 Saberton Avenue  
 Sheridan, Wyoming 82801  
 Phone 307-674-0609

N  
  
 NAD83 CO-Nft  
 Scale: 1" = 2,500ft

Drawn by: AK  
 Revised:

Date: 23 Aug 2024  
 Date:

1 Sheet of 2

**FERN OGDG RELATED LOCATION & FLOWLINE MAP  
FERN**

**SECTION 31, TOWNSHIP 3 NORTH, RANGE 66 WEST, 6TH P.M., WELD COUNTY, COLORADO**

LOCATION ID	LOCATION NAME	LOCATION NUMBER	OPERATOR NAME
305349	MILLER FEDERAL-62N66W	6NWSE	KERR MCGEE OIL & GAS ONSHORE LP
305751	MILLER-62N66W	7NWNW	KERR MCGEE OIL & GAS ONSHORE LP
305787	MILLER-62N66W	7SWNE	KERR MCGEE OIL & GAS ONSHORE LP
305788	MILLER-62N66W	7NWNW	KERR MCGEE OIL & GAS ONSHORE LP
305797	MILLER-62N66W	7NWSW	KERR MCGEE OIL & GAS ONSHORE LP
317850	VONDERLAGE	35-31	KERR MCGEE OIL & GAS ONSHORE LP
317858	ELTON N MILLER C GAS UNIT-62N66W	7SWSW	KERR MCGEE OIL & GAS ONSHORE LP
317891	ROBERT SAKATA G U-62N66W	6NWNE	KERR MCGEE OIL & GAS ONSHORE LP
318022	CLC GAS UNIT-62N66W	18NESW	KERR MCGEE OIL & GAS ONSHORE LP
318084	KELLY GAS UNIT-62N66W	18SENE	KERR MCGEE OIL & GAS ONSHORE LP
318107	GEE TANK BATTERY	15C-25HZ	KERR MCGEE OIL & GAS ONSHORE LP
318326	JOHNSON, ROLLAND A UNIT B-62N66W	7NESE	KP KAUFFMAN COMPANY INC
318420	FRANKLIN STERMOLE UNIT-62N66W	18SWNW	KP KAUFFMAN COMPANY INC
318528	ELTON N. MILLER 'E'-62N66W	6NWSE	KP KAUFFMAN COMPANY INC
318752	KUIPERS POOLING UNIT-62N67W	12NENW	KERR MCGEE OIL & GAS ONSHORE LP
318797	FLOYD C. SHAW UNIT-62N67W	1NESE	KERR MCGEE OIL & GAS ONSHORE LP
318800	ROLLIE J VINCENT B-62N67W	12SESE	KERR MCGEE OIL & GAS ONSHORE LP
318811	ELTON N. MILLER GU B-62N66W	7NWNW	KERR MCGEE OIL & GAS ONSHORE LP
318812	ELTON N. MILLER 'C'-62N66W	7NESE	KERR MCGEE OIL & GAS ONSHORE LP
318923	DONALD K NORGREN UNIT E-62N67W	1SWNW	KERR MCGEE OIL & GAS ONSHORE LP
319237	BREWER POOLING UNIT-63N67W	36SESE	KERR MCGEE OIL & GAS ONSHORE LP
319348	GEORGE NISHIMOTO GU TRUE-63N67W	36SWNW	KERR MCGEE OIL & GAS ONSHORE LP
319447	OLIN	30-31	KERR MCGEE OIL & GAS ONSHORE LP
319570	CASTOR HANSON UNIT-TRUE-63N67W	25NWSE	KERR MCGEE OIL & GAS ONSHORE LP
322561	MURATA-62N66W	19CNW	CRESTONE PEAK RESOURCES OPERATING LLC
323101	ROLLIE J VINCENT-62N67W	12SWSE	KP KAUFFMAN COMPANY INC
327408	BANGERT-62N66W	19NENE	CRESTONE PEAK RESOURCES OPERATING LLC
328399	MAGNESS-63N67W	25NESE	KERR MCGEE OIL & GAS ONSHORE LP
328400	MAGNESS-63N67W	25SESE	KERR MCGEE OIL & GAS ONSHORE LP
328844	MAGNESS RED W-62N66W	6SWNW	KERR MCGEE OIL & GAS ONSHORE LP
329519	UPRC-63N66W	31NESE	KERR MCGEE OIL & GAS ONSHORE LP
329579	GLOVER V	12-18D	KERR MCGEE OIL & GAS ONSHORE LP
329625	HSR-NISHIMOTO-63N67W	36NESW	KERR MCGEE OIL & GAS ONSHORE LP
329636	ELTON RED V-62N67W	12NENE	KERR MCGEE OIL & GAS ONSHORE LP
329637	ELTON RED V-62N67W	12SENE	KERR MCGEE OIL & GAS ONSHORE LP
330161	BAKER RED V-62N67W	1NWSW	KERR MCGEE OIL & GAS ONSHORE LP
330164	BAKER RED V-62N67W	1NESW	KERR MCGEE OIL & GAS ONSHORE LP
330165	BAKER RED V-62N67W	1SESW	KERR MCGEE OIL & GAS ONSHORE LP
330778	HSR-ELTON MILLER-62N66W	7NENW	KERR MCGEE OIL & GAS ONSHORE LP
330898	HSR-MILLER FEDERAL-62N66W	6SWSE	KERR MCGEE OIL & GAS ONSHORE LP
330983	HSR-MILLER FEDERAL-62N66W	7SWNW	KERR MCGEE OIL & GAS ONSHORE LP
331409	WINDELL-62N67W	13NENE	KERR MCGEE OIL & GAS ONSHORE LP
331410	WINDELL-62N66W	18NWNW	KERR MCGEE OIL & GAS ONSHORE LP
331452	MILLER FEDERAL-62N66W	7SENE	KERR MCGEE OIL & GAS ONSHORE LP
331676	WIRKNER-VANCE	3C-36HZ	KERR MCGEE OIL & GAS ONSHORE LP
331711	KUIPERS V-62N67W	12NWNW	KERR MCGEE OIL & GAS ONSHORE LP
331887	FT. VASQUEZ-63N66W	31NWNW	KERR MCGEE OIL & GAS ONSHORE LP
332243	WINDELL-62N66W	18SWNW	KERR MCGEE OIL & GAS ONSHORE LP
332889	JOHNSON, ROLLAND A-62N66W	7NWSE	KP KAUFFMAN COMPANY INC
332917	ALFRED HERMAN UNIT-62N66W	7SESE	KP KAUFFMAN COMPANY INC
332927	ALFRED HERMAN UNIT B-62N66W	7SESW	KP KAUFFMAN COMPANY INC
336067	HSR-HERMAN FEDERAL-62N66W	7SWSE	KP KAUFFMAN COMPANY INC
336098	JOHNSON, ROLLAND A UNIT D-62N66W	7SENE	KP KAUFFMAN COMPANY INC
336123	HSR-MAGNESS-63N67W	25SWSE	KERR MCGEE OIL & GAS ONSHORE LP
336226	UPRC-63N66W	31SESE	KERR MCGEE OIL & GAS ONSHORE LP
336259	FT VASQUEZ-63N67W	36NENE	KERR MCGEE OIL & GAS ONSHORE LP
336270	WELD COUNTY-62N67W	13SWSE	KERR MCGEE OIL & GAS ONSHORE LP
336281	NISHIMOTO-63N67W	36NWSE	KERR MCGEE OIL & GAS ONSHORE LP
336414	SAKATA RED W-62N66W	6SENE	KERR MCGEE OIL & GAS ONSHORE LP
336506	VONDERLAGE	29N-W31HZ	KERR MCGEE OIL & GAS ONSHORE LP
406613	ELTON N MILLER-62N66W	7SWNE	KP KAUFFMAN COMPANY INC
426644	MAGNESS P	25-24	NOBLE ENERGY INC
426647	MAGNESS P	36-29 TANK	NOBLE ENERGY INC
430041	VONDERLAGE	29N-E31HZ	KERR MCGEE OIL & GAS ONSHORE LP
436543	GEE	15C-25HZ	KERR MCGEE OIL & GAS ONSHORE LP
436708	GEE	16N-25HZ	KERR MCGEE OIL & GAS ONSHORE LP
444975	KUIPERS 15-1A/BAKER O SA	34002652	KERR MCGEE OIL & GAS ONSHORE LP
445411	FT VASQUEZ 1&8-36A O SA	34002657	KERR MCGEE OIL & GAS ONSHORE LP
445878	NISHIMOTO 7-36/CHARL O SA	34003657	KERR MCGEE OIL & GAS ONSHORE LP
445906	MAGNESS 3&4-36A/SAND O SA	34003672	KERR MCGEE OIL & GAS ONSHORE LP
445907	MILLER FD 5&6-7A O SA	34002746	KERR MCGEE OIL & GAS ONSHORE LP
446061	WIRKNER-VANCE 3C-36HZ FACILITY	36164732	KERR MCGEE OIL & GAS ONSHORE LP
446066	KUIPERS RD V12-2,7 CAROL V1-15 O SA	36155308	KERR MCGEE OIL & GAS ONSHORE LP
446405	WINDELL1-13&4&5-18 O SA	34003778	KERR MCGEE OIL & GAS ONSHORE LP
446614	FRANKLIN STERMOLE UNIT	1	KP KAUFFMAN COMPANY INC
458298	ELTON N MILLER UNIT B-62N66W	7SWNE	KERR MCGEE OIL & GAS ONSHORE LP
480210	31-3N-66W VONDERLAGE TB LOC		KERR MCGEE OIL & GAS ONSHORE LP

K:\ANADARKO\2023\173\_FERN\_T3N\_R66W\_SEC\_31\GIS\FORM\_2A\MAPS\FERN\_RELATED\_LOCATION\_FLOWLINE\_MAP\_TABLE.mxd 8/23/2024 2:40:34 PM

**Kerr-McGee Oil &  
Gas Onshore LP**  
1099 18th Street  
Denver, Colorado 80202



**609 Consulting, LLC**  
**LOVELAND OFFICE**  
 6706 North Franklin Avenue  
 Loveland, Colorado 80538  
 Phone 970-776-4331  
**SHERIDAN OFFICE**  
 1095 Saberton Avenue  
 Sheridan, Wyoming 82801  
 Phone 307-674-0609

NAD83 CO-Nft

Drawn by: AK  
Revised:

Date: 23 Aug 2024  
Date:

2 Sheet:  
of 2