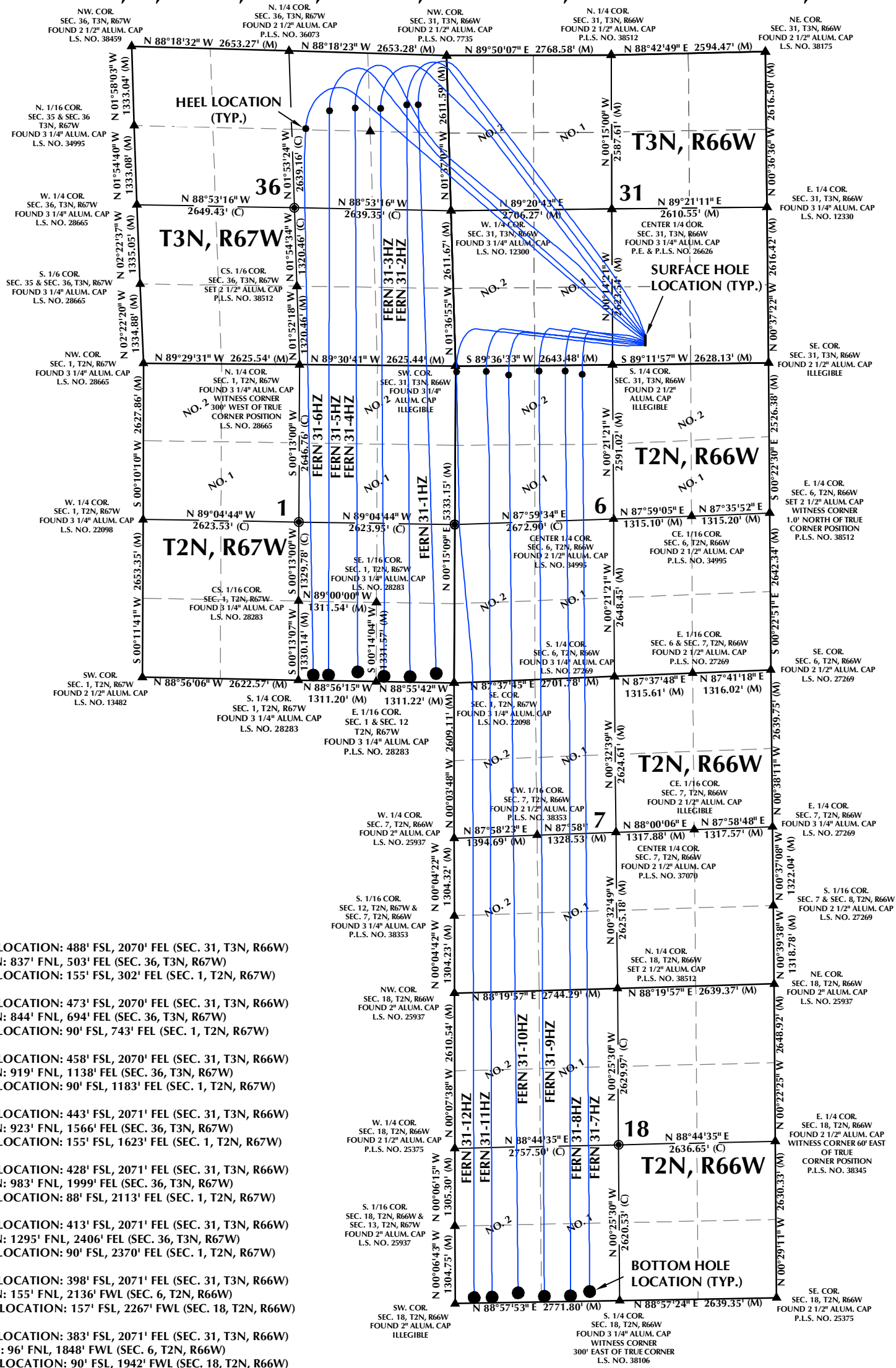


DIRECTIONAL WELL PLAT (ECMC) / MULTI-WELL PLAN (OGED)

SECTION 31, T3N, R66W, SECTION 36, T3N, R67W, SECTION 1, T2N, R67W & SECTIONS 6, 7, & 18, T2N, R66W, 6TH P.M., WELD COUNTY, COLORADO



WELL NOTES:

- FERN 31-1HZ**
SURFACE HOLE LOCATION: 488' FSL, 2070' FEL (SEC. 31, T3N, R66W)
HEEL LOCATION: 837' FNL, 503' FEL (SEC. 36, T3N, R67W)
BOTTOM HOLE LOCATION: 155' FSL, 302' FEL (SEC. 1, T2N, R67W)
- FERN 31-2HZ**
SURFACE HOLE LOCATION: 473' FSL, 2070' FEL (SEC. 31, T3N, R66W)
HEEL LOCATION: 844' FNL, 694' FEL (SEC. 36, T3N, R67W)
BOTTOM HOLE LOCATION: 90' FSL, 743' FEL (SEC. 1, T2N, R67W)
- FERN 31-3HZ**
SURFACE HOLE LOCATION: 458' FSL, 2070' FEL (SEC. 31, T3N, R66W)
HEEL LOCATION: 919' FNL, 1138' FEL (SEC. 36, T3N, R67W)
BOTTOM HOLE LOCATION: 90' FSL, 1183' FEL (SEC. 1, T2N, R67W)
- FERN 31-4HZ**
SURFACE HOLE LOCATION: 443' FSL, 2071' FEL (SEC. 31, T3N, R66W)
HEEL LOCATION: 923' FNL, 1566' FEL (SEC. 36, T3N, R67W)
BOTTOM HOLE LOCATION: 155' FSL, 1623' FEL (SEC. 1, T2N, R67W)
- FERN 31-5HZ**
SURFACE HOLE LOCATION: 428' FSL, 2071' FEL (SEC. 31, T3N, R66W)
HEEL LOCATION: 983' FNL, 1999' FEL (SEC. 36, T3N, R67W)
BOTTOM HOLE LOCATION: 88' FSL, 2113' FEL (SEC. 1, T2N, R67W)
- FERN 31-6HZ**
SURFACE HOLE LOCATION: 413' FSL, 2071' FEL (SEC. 31, T3N, R66W)
HEEL LOCATION: 1295' FNL, 2406' FEL (SEC. 36, T3N, R67W)
BOTTOM HOLE LOCATION: 90' FSL, 2370' FEL (SEC. 1, T2N, R67W)
- FERN 31-7HZ**
SURFACE HOLE LOCATION: 398' FSL, 2071' FEL (SEC. 31, T3N, R66W)
HEEL LOCATION: 155' FNL, 2136' FWL (SEC. 6, T2N, R66W)
BOTTOM HOLE LOCATION: 157' FSL, 2267' FWL (SEC. 18, T2N, R66W)
- FERN 31-8HZ**
SURFACE HOLE LOCATION: 383' FSL, 2071' FEL (SEC. 31, T3N, R66W)
HEEL LOCATION: 96' FNL, 1848' FWL (SEC. 6, T2N, R66W)
BOTTOM HOLE LOCATION: 90' FSL, 1942' FWL (SEC. 18, T2N, R66W)
- FERN 31-9HZ**
SURFACE HOLE LOCATION: 368' FSL, 2071' FEL (SEC. 31, T3N, R66W)
HEEL LOCATION: 95' FNL, 1408' FWL (SEC. 6, T2N, R66W)
BOTTOM HOLE LOCATION: 90' FSL, 1502' FWL (SEC. 18, T2N, R66W)
- FERN 31-10HZ**
SURFACE HOLE LOCATION: 353' FSL, 2071' FEL (SEC. 31, T3N, R66W)
HEEL LOCATION: 156' FNL, 897' FWL (SEC. 6, T2N, R66W)
BOTTOM HOLE LOCATION: 155' FSL, 1061' FWL (SEC. 18, T2N, R66W)
- FERN 31-11HZ**
SURFACE HOLE LOCATION: 338' FSL, 2071' FEL (SEC. 31, T3N, R66W)
HEEL LOCATION: 95' FNL, 518' FWL (SEC. 6, T2N, R66W)
BOTTOM HOLE LOCATION: 90' FSL, 621' FWL (SEC. 18, T2N, R66W)
- FERN 31-12HZ**
SURFACE HOLE LOCATION: 323' FSL, 2071' FEL (SEC. 31, T3N, R66W)
HEEL LOCATION: 97' FNL, 17' FWL (SEC. 6, T2N, R66W)
BOTTOM HOLE LOCATION: 88' FSL, 320' FWL (SEC. 18, T2N, R66W)

NOTES:

1. ▲ INDICATES SECTION CORNER.
2. ● INDICATES CALCULATED CORNER.
3. BASIS OF BEARINGS DERIVED FROM COLORADO COORDINATE SYSTEM OF 1983, NORTH ZONE.
4. ALL MEASURED DISTANCES ARE GRID. COMBINED SCALE FACTOR: .99972971 CALCULATED FROM THE SW. CORNER OF SECTION 6, T2N, R66W.
5. WELL FOOTAGES ARE MEASURED AT RIGHT ANGLES TO THE SECTION LINES.

WELL PAD - FERN

**DIRECTIONAL WELL PLAT (ECMC) /
MULTI-WELL PLAN (OGED)**
FERN 31-1HZ, FERN 31-2HZ, FERN 31-3HZ,
FERN 31-4HZ, FERN 31-5HZ, FERN 31-6HZ,
FERN 31-7HZ, FERN 31-8HZ, FERN 31-9HZ,
FERN 31-10HZ, FERN 31-11HZ & FERN 31-12HZ
LOCATED IN SECTION 31, T3N, R66W, SECTION 36,
T3N, R67W, SECTION 1, T2N, R67W
& SECTIONS 6, 7, & 18, T2N, R66W, 6TH P.M.
WELD COUNTY, COLORADO

**Kerr-McGee Oil &
Gas Onshore LP**
1099 18th Street
Denver, Colorado 80202



CONSULTING, LLC

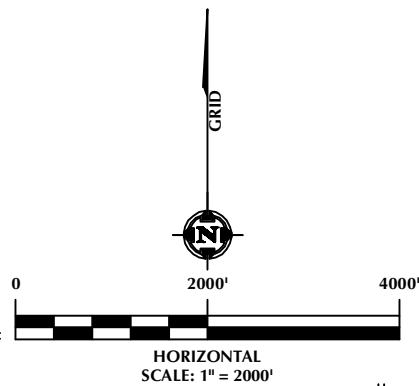
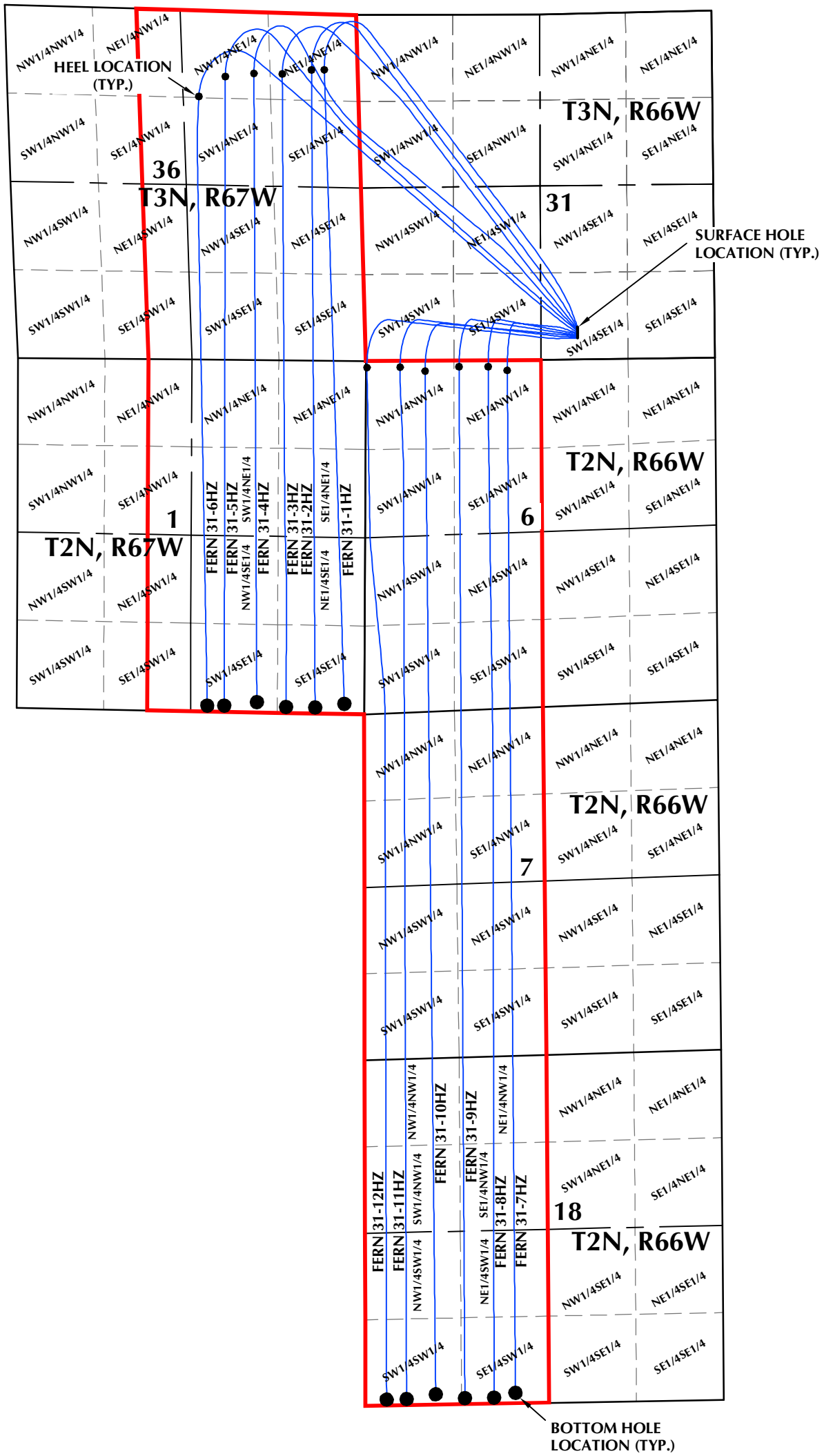
SHERIDAN OFFICE
1095 Saberton Avenue
Sheridan, Wyoming 82801
Phone 307-674-0609

LOVELAND OFFICE
6706 North Franklin Avenue
Loveland, Colorado 80538
Phone 970-776-4331

DRAFTED BY: SJM	CHECKED BY: RKF	SHEET NO: 1A
DATE DRAFTED: 9/24/24	DATE SURVEYED: 9/9/24	1A
REVISED:	FILE NAME: 23-173	

DIRECTIONAL WELL PLAT (ECMC) / MULTI-WELL PLAN (OGED)

SECTION 31, T3N, R66W, SECTION 36, T3N, R67W, SECTION 1, T2N, R67W & SECTIONS 6, 7, & 18, T2N, R66W, 6TH P.M., WELD COUNTY, COLORADO



- LEGEND:**
- DSU BOUNDARY
 - WELLBORE TRAJECTORY
 - HEEL LOCATION
 - BOTTOM HOLE LOCATION

WELL PAD - FERN

DIRECTIONAL WELL PLAT (ECMC) /
MULTI-WELL PLAN (OGED)
FERN 31-1HZ, FERN 31-2HZ, FERN 31-3HZ,
FERN 31-4HZ, FERN 31-5HZ, FERN 31-6HZ,
FERN 31-7HZ, FERN 31-8HZ, FERN 31-9HZ,
FERN 31-10HZ, FERN 31-11HZ & FERN 31-12HZ
LOCATED IN SECTION 31, T3N, R66W, SECTION 36,
T3N, R67W, SECTION 1, T2N, R67W
& SECTIONS 6, 7, & 18, T2N, R66W, 6TH P.M.
WELD COUNTY, COLORADO

**Kerr-McGee Oil &
Gas Onshore LP**
1099 18th Street
Denver, Colorado 80202



CONSULTING, LLC

SHERIDAN OFFICE
1095 Saberton Avenue
Sheridan, Wyoming 82801
Phone 307-674-0609

LOVELAND OFFICE
6706 North Franklin Avenue
Loveland, Colorado 80538
Phone 970-776-4331

DRAFTED BY: SJM	CHECKED BY: RKF	SHEET NO: 1B
DATE DRAFTED: 9/24/24	DATE SURVEYED: 9/9/24	1B 1B OF 1
REVISED:	FILE NAME: 23-173	