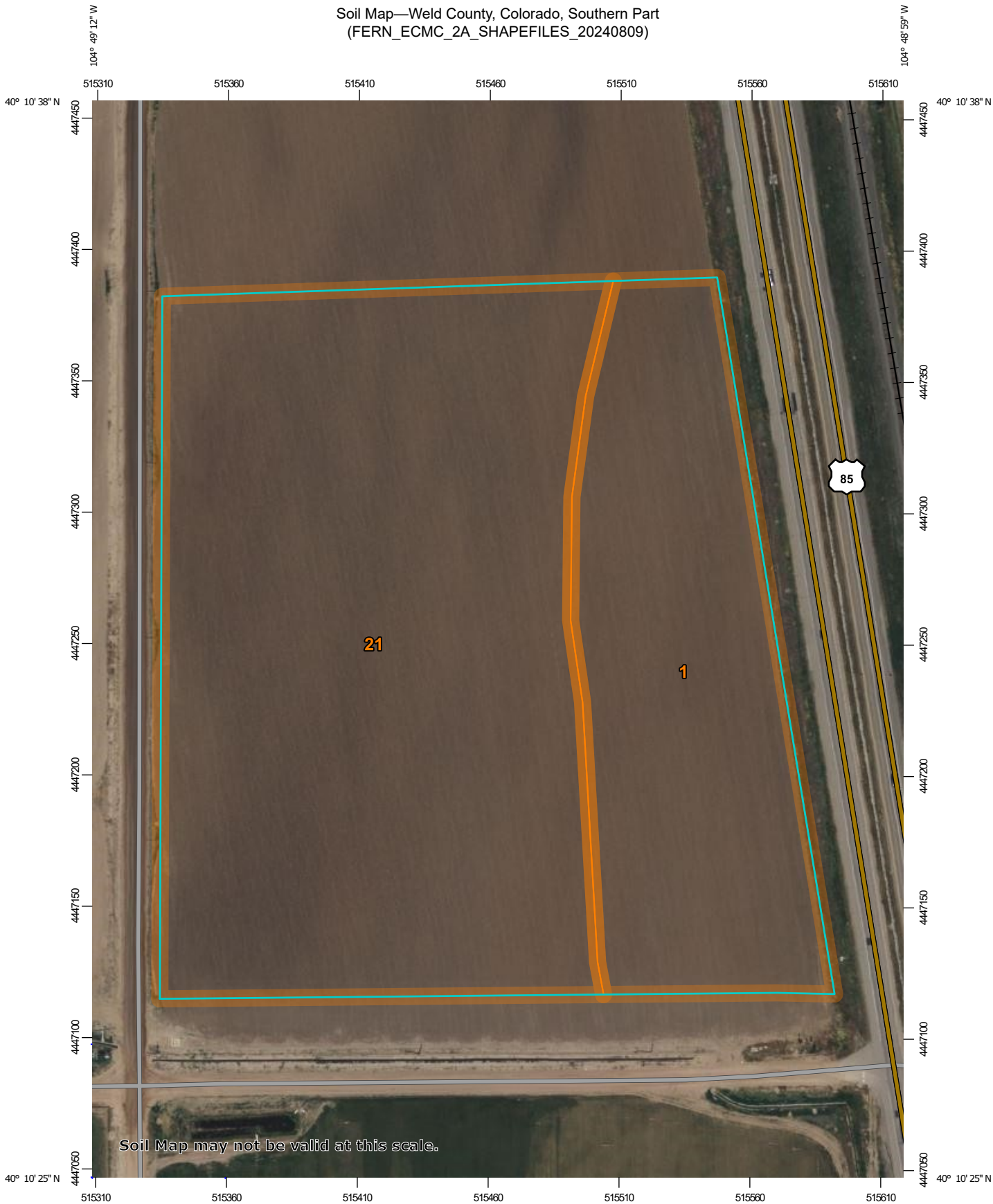
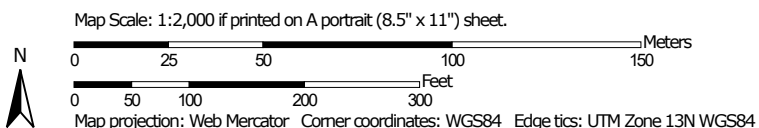


Soil Map—Weld County, Colorado, Southern Part
(FERN_ECMC_2A_SHAPEFILES_20240809)




Soil Map may not be valid at this scale.



MAP LEGEND

Area of Interest (AOI)

 Area of Interest (AOI)

Soils

 Soil Map Unit Polygons

 Soil Map Unit Lines

 Soil Map Unit Points

Special Point Features



Blowout



Borrow Pit



Clay Spot



Closed Depression



Gravel Pit



Gravelly Spot



Landfill



Lava Flow



Marsh or swamp



Mine or Quarry



Miscellaneous Water



Perennial Water



Rock Outcrop



Saline Spot



Sandy Spot



Severely Eroded Spot



Sinkhole



Slide or Slip



Sodic Spot



Spoil Area



Stony Spot



Very Stony Spot



Wet Spot



Other



Special Line Features

Water Features



Streams and Canals

Transportation



Rails



Interstate Highways



US Routes



Major Roads



Local Roads

Background



Aerial Photography

MAP INFORMATION

The soil surveys that comprise your AOI were mapped at 1:24,000.

Warning: Soil Map may not be valid at this scale.

Enlargement of maps beyond the scale of mapping can cause misunderstanding of the detail of mapping and accuracy of soil line placement. The maps do not show the small areas of contrasting soils that could have been shown at a more detailed scale.

Please rely on the bar scale on each map sheet for map measurements.

Source of Map: Natural Resources Conservation Service
Web Soil Survey URL:
Coordinate System: Web Mercator (EPSG:3857)

Maps from the Web Soil Survey are based on the Web Mercator projection, which preserves direction and shape but distorts distance and area. A projection that preserves area, such as the Albers equal-area conic projection, should be used if more accurate calculations of distance or area are required.

This product is generated from the USDA-NRCS certified data as of the version date(s) listed below.

Soil Survey Area: Weld County, Colorado, Southern Part
Survey Area Data: Version 22, Aug 24, 2023

Soil map units are labeled (as space allows) for map scales 1:50,000 or larger.

Date(s) aerial images were photographed: Jun 8, 2021—Jun 12, 2021

The orthophoto or other base map on which the soil lines were compiled and digitized probably differs from the background imagery displayed on these maps. As a result, some minor shifting of map unit boundaries may be evident.

Map Unit Legend

Map Unit Symbol	Map Unit Name	Acres in AOI	Percent of AOI
1	Altvan loam, 0 to 1 percent slopes	4.9	31.1%
21	Dacono clay loam, 0 to 1 percent slopes	10.8	68.9%
Totals for Area of Interest		15.7	100.0%

Weld County, Colorado, Southern Part

1—Altvan loam, 0 to 1 percent slopes

Map Unit Setting

National map unit symbol: 361j
Elevation: 4,500 to 4,900 feet
Mean annual precipitation: 14 to 16 inches
Mean annual air temperature: 46 to 48 degrees F
Frost-free period: 130 to 150 days
Farmland classification: Not prime farmland

Map Unit Composition

Altvan and similar soils: 90 percent
Minor components: 10 percent
Estimates are based on observations, descriptions, and transects of the mapunit.

Description of Altvan

Setting

Landform: Terraces
Down-slope shape: Linear
Across-slope shape: Linear
Parent material: Old alluvium

Typical profile

H1 - 0 to 10 inches: loam
H2 - 10 to 25 inches: clay loam
H3 - 25 to 60 inches: gravelly sand

Properties and qualities

Slope: 0 to 1 percent
Depth to restrictive feature: More than 80 inches
Drainage class: Well drained
Runoff class: Low
Capacity of the most limiting layer to transmit water (Ksat): Moderately high to high (0.20 to 2.00 in/hr)
Depth to water table: More than 80 inches
Frequency of flooding: None
Frequency of ponding: None
Calcium carbonate, maximum content: 5 percent
Available water supply, 0 to 60 inches: Low (about 5.7 inches)

Interpretive groups

Land capability classification (irrigated): 3s
Land capability classification (nonirrigated): 4e
Hydrologic Soil Group: B
Ecological site: R067BY002CO - Loamy Plains
Hydric soil rating: No

Minor Components

Cascajo

Percent of map unit: 9 percent

Hydric soil rating: No

Aquic haplustolls

Percent of map unit: 1 percent

Landform: Swales

Hydric soil rating: Yes

Data Source Information

Soil Survey Area: Weld County, Colorado, Southern Part

Survey Area Data: Version 22, Aug 24, 2023

Weld County, Colorado, Southern Part

21—Dacono clay loam, 0 to 1 percent slopes

Map Unit Setting

National map unit symbol: 361y
Elevation: 4,550 to 4,970 feet
Mean annual precipitation: 14 to 18 inches
Mean annual air temperature: 48 to 52 degrees F
Frost-free period: 140 to 160 days
Farmland classification: Prime farmland if irrigated

Map Unit Composition

Dacono and similar soils: 85 percent
Minor components: 15 percent
Estimates are based on observations, descriptions, and transects of the mapunit.

Description of Dacono

Setting

Landform: Terraces
Down-slope shape: Linear
Across-slope shape: Linear
Parent material: Mixed alluvium

Typical profile

H1 - 0 to 12 inches: clay loam
H2 - 12 to 21 inches: clay loam
H3 - 21 to 27 inches: clay loam
H4 - 27 to 60 inches: very gravelly sand

Properties and qualities

Slope: 0 to 1 percent
Depth to restrictive feature: More than 80 inches
Drainage class: Well drained
Runoff class: Low
Capacity of the most limiting layer to transmit water (Ksat): Moderately high (0.20 to 0.60 in/hr)
Depth to water table: More than 80 inches
Frequency of flooding: None
Frequency of ponding: None
Calcium carbonate, maximum content: 15 percent
Maximum salinity: Nonsaline to very slightly saline (0.0 to 2.0 mmhos/cm)
Available water supply, 0 to 60 inches: Moderate (about 6.3 inches)

Interpretive groups

Land capability classification (irrigated): 2s
Land capability classification (nonirrigated): 3s
Hydrologic Soil Group: C

Ecological site: R067BY042CO - Clayey Plains
Hydric soil rating: No

Minor Components

Heldt

Percent of map unit: 5 percent
Hydric soil rating: No

Nunn

Percent of map unit: 5 percent
Hydric soil rating: No

Altvan

Percent of map unit: 5 percent
Hydric soil rating: No

Data Source Information

Soil Survey Area: Weld County, Colorado, Southern Part
Survey Area Data: Version 22, Aug 24, 2023