

# Monaco Engineering, Inc.

RECEIVED  
JUN 1 1978  
COLO. OIL & GAS CONS. COMM.

COMPANY **KISSINGER PETROLEUM CORPORATION**  
WELL **FORD #6-8**  
COUNTY **BACA** STATE **COLORADO**  
LOCATION **C SE NW SEC 8 T34S R44W**

## HYDROCARBON ANALYSIS LOG

DATE LOGGED FROM **5/25/78** TO

DEPTH LOGGED FROM **1700'** TO

SCANNED

ELEVATION **K.B. 4127'**

ENGINEER **THOMAS HALLIDAY** **G.L. 4120'**

### LEGEND

ANHYDRITE  
 ARKOSE  
 CHERT  
 DOLOMITE  
 LIMESTONE  
 SANDSTONE  
 COAL  
 SHALE

### HYDROCARBON GASES

TOTAL GAS FROM CUTTINGS \_\_\_\_\_  
TOTAL GAS FROM HOT WIRE .....

### CHROMATOGRAPH ANALYSIS

1 - METHANE 3 - PROPANE 4 - BUTANES  
2 - ETHANE 5 - PENTANES

### ABBREVIATIONS

NB NEW BIT  
 NR NO RETURNS  
 CO CIRCULATE OUT  
 DST DRILL STEM TEST

### REMARKS

### MUD CHARACTERISTICS

WT - VIS - FILT - CK - PH - CL - OIL

### DRILLING RATE

MINUTES PER 5 FT.

DEPTH LITHOLOGY

10 20

DRLG 7 7/8" HOLE  
W/BIT 2" STC DTJ

WOB=30  
RPM=70  
PP=300

50

1800

50

1900

50

20 40 60 80

LAG = 12 MIN/8 OZ. CARBIDE

SH BRN-RED SLTY SDY

9.2-32

ANHY WH-CLR

SH AA

SS WH-RED FG SUG SLTY TT FRI

SH RED-GN SFT SLTY

SS AA ARG

SS WH VFG FRI TT

SH RED BRN SLTY TT SDY

SH AA SLTY



00598577



# Monaco Engineering

RECEIVED  
JUN 1 1978

## HYDROCARBON ANALYSIS LOG

COMPANY **KISSINGER PETROLEUM CORPORATION**

WELL **FORD #6-8**

COUNTY **BACA**

STATE **COLORADO**

LOCATION **C SE NW SEC 8 T34S R44W**

DATE LOGGED FROM **5/25/78**

TO

ELEVATION **K.B. 4127'**

DEPTH LOGGED FROM **1700'**

TO

ENGINEER **THOMAS HALLIDAY**

**G.L. 4120'**

### LEGEND

vvv ANHYDRITE    DOLOMITE    COAL  
 XXX ARKOSE    LIMESTONE    SHALE  
 AAA CHERT    SANDSTONE

### HYDROCARBON GASES

TOTAL GAS FROM CUTTINGS ———  
 TOTAL GAS FROM HOT WIRE .....

### ABBREVIATIONS

NB NEW BIT  
 NR NO RETURNS  
 CO CIRCULATE OUT  
 DST DRILL STEM TEST

### DRILLING RATE

MINUTES PER FT.

DEPTH

LITHOLOGY

POSSIBILITY

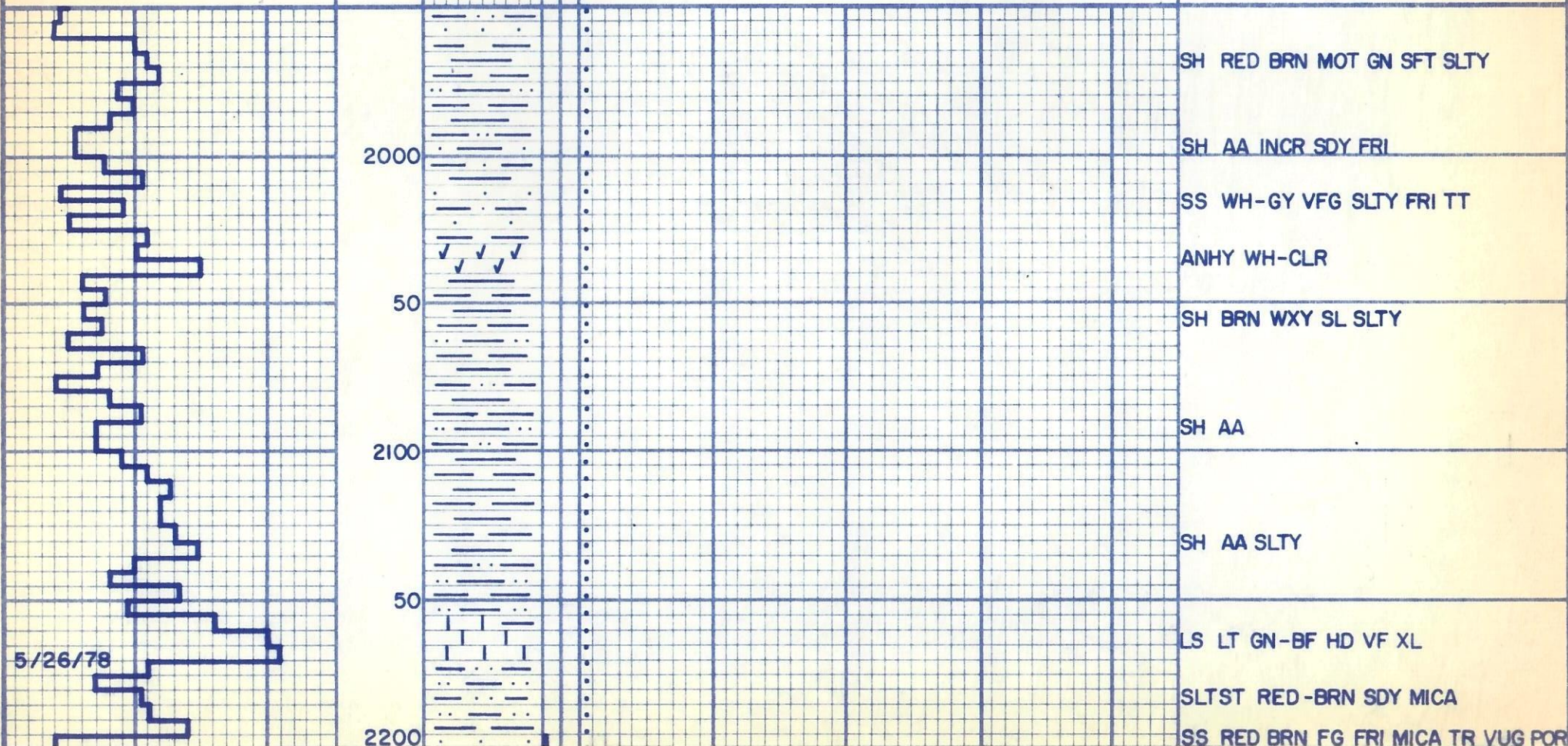
### CHROMATOGRAPH ANALYSIS

1 — METHANE    3 — PROPANE    4 — BUTANES  
 2 — ETHANE    5 — PENTANES

### REMARKS

MUD CHARACTERISTICS

WT-VIS-FILT-CK-PH-CL-OIL





# Monaco Engineering, Inc.

RECEIVED  
JUN 1 1978  
COLO. OIL & GAS CONS.

COMPANY **KISSINGER PETROLEUM CORPORATION**  
WELL **FORD #6-8**  
COUNTY **BACA** STATE **COLORADO**  
LOCATION **C SE NW SEC 8 T34S R44W**

## HYDROCARBON ANALYSIS LOG

DATE LOGGED FROM **5/25/78** TO

ELEVATION **K.B. 4127'**

DEPTH LOGGED FROM **1700'** TO

ENGINEER **THOMAS HALLIDAY** **G.L. 4120'**

### LEGEND

ANHYDRITE    DOLOMITE    COAL  
 ARKOSE    LIMESTONE    SHALE  
 CHERT    SANDSTONE   

### HYDROCARBON GASES

TOTAL GAS FROM CUTTINGS   
TOTAL GAS FROM HOT WIRE

### CHROMATOGRAPH ANALYSIS

1 - METHANE    3 - PROPANE    4 - BUTANES  
2 - ETHANE    5 - PENTANES

### ABBREVIATIONS

NB NEW BIT  
 NR NO RETURNS  
 CO CIRCULATE OUT  
 DST DRILL STEM TEST

### REMARKS

### MUD CHARACTERISTICS

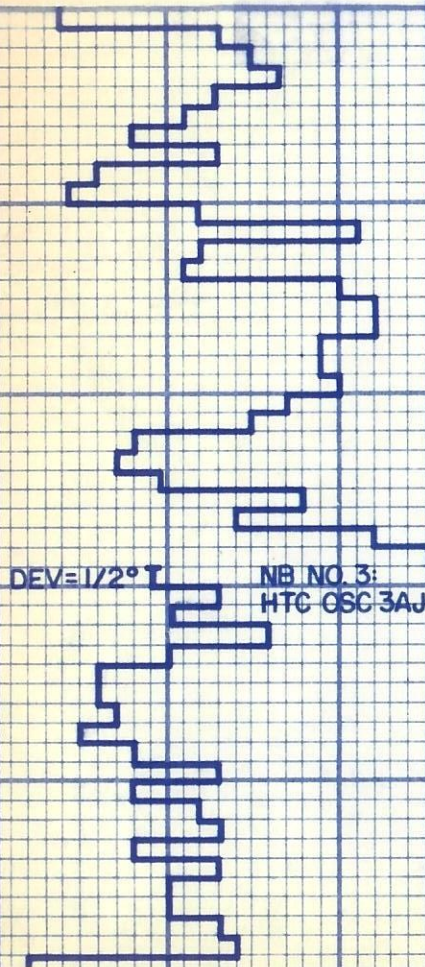
WT - VIS - FILT - CK - PH - CL - OIL

### DRILLING RATE

MINUTES PER FT.

### DEPTH LITHOLOGY

POSSIBLY OIL SHOW



50

2300

50

2400

50

LAG = 18 MIN / 8 OZ CARBIDE - 55 UNITS H.W.

SH RED BRN SLTY

SS AA SLTY ARG TT

SH RED-BRN-GN SFT SL SLTY  
9.5-32

SS AA SLTY SL FRI

SH BRN SFT - SLTY

SH AA LMY

SH BRN SLTY HD GN-GY TT SLTST

SH AA SLTY

SS WH-GY VFG SUG SLTY TT FRI



# Monaco Engineering Inc.

JUN 1 1978

## HYDROCARBON ANALYSIS LOG

COLO. OIL & GAS CONS. COMM.

COMPANY **KISSINGER PETROLEUM CORPORATION**

WELL **FORD #6-8**

COUNTY **BACA**

STATE **COLORADO**

LOCATION **C SE NW SEC 8 T34S R44W**

ELEVATION **K.B. 4127'**

ENGINEER **THOMAS HALLIDAY**

**G.L. 4120'**

DATE LOGGED FROM **5/25/78**

TO

DEPTH LOGGED FROM **1700'**

TO

### LEGEND

√√√ ANHYDRITE    ▨ DOLOMITE    ▩ COAL  
 XXX ARKOSE    ▤ LIMESTONE    ▨ SHALE  
 AAA CHERT    . . . SANDSTONE    ▭

### HYDROCARBON GASES

TOTAL GAS FROM CUTTINGS ———  
 TOTAL GAS FROM HOT WIRE . . . . .

### CHROMATOGRAPH ANALYSIS

1 — METHANE    3 — PROPANE    4 — BUTANES  
 2 — ETHANE    5 — PENTANES

### ABBREVIATIONS

NB NEW BIT  
 NR NO RETURNS  
 CO CIRCULATE OUT  
 DST DRILL STEM TEST

### REMARKS

### MUD CHARACTERISTICS

WT-VIS-FILT-CK-PH-CL-OIL

### DRILLING RATE

MINUTES PER FT.

DEPTH

LITHOLOGY

OIL SHOW

5/27/78

2500

50

2600

50

2700

LS GY-GN HD VF XL

SH AA

SS WH-GY-BRN F-MG FRI ARG TT  
SLTY

SS AA SLTY CALC

LS WH-GY HD VF XL

SH BRN V CALC SL CHKY WH

SH AA SDY

LS BF-GY HD VF XL SL FOS

LS AA SDY VUG POR

ANHY WH-CLR

SH BRN SLTY SDY FRI