

KT Resources LLC
Ant Hill Unit 19-12
Location ID: 316339



Missing information



Missing required information



**KT Resources LLC
Ant Hill Unit 19-12
Location ID: 316339**



Berm leak at Southwest corner

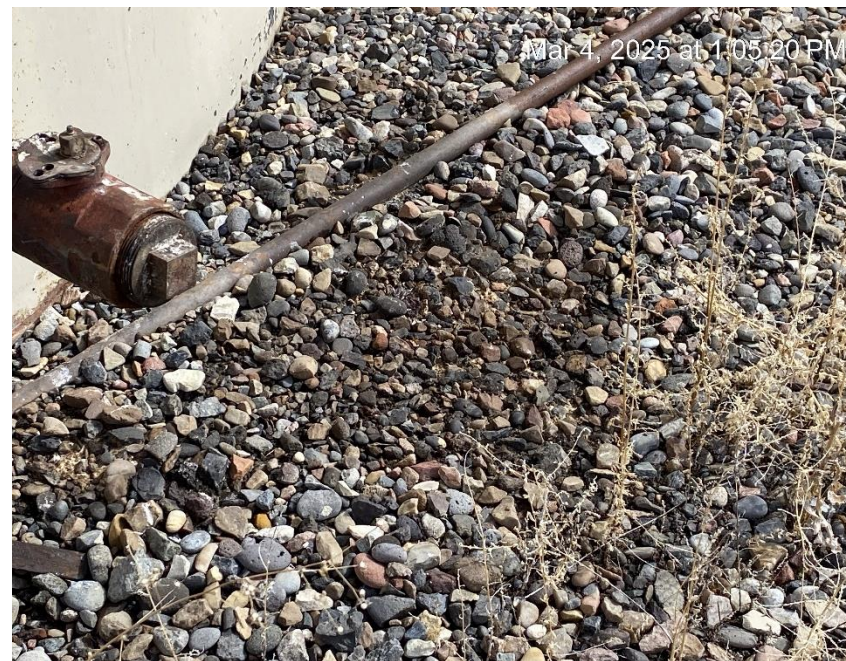


Berm leak at Southwest corner

KT Resources LLC
Ant Hill Unit 19-12
Location ID: 316339



Berm leak at Southeast corner



Staining

**KT Resources LLC
Ant Hill Unit 19-12
Location ID: 316339**



Unused equipment



Disconnected lines off separator

KT Resources LLC
Ant Hill Unit 19-12
Location ID: 316339

Est. 6070' Rio Blanco ROC 503
Mar 4, 2025 at 1:09:07 PM

IMPACT ANALYTICAL SYSTEMS INC.
365 SOUTH MAIN
BRIGHTON, CO 80601
303-637-0150 www.impactanalytical.com

Meter S/N
15827666
0000127535

Station Name A.H.U. 19-12
Station No. 126275587 Producer 310P
Sec 19 Township 2N Range 96W
Diff 250" Temp Range 0-150° Tube Size 2069
Static 200" Absolute 11.80 psig

	Date	Orifice Plate Size	Meter Test Date	Sample Date
GM	11-30-17	0.500 ✓	11-30-17	
GM	5-16-18	0.500	5-16-18	5-16-18
KB	10-24-18	0.500	10-24-18	10-24-19
.8669	10-3-19	.500	10-3-19	10-3-19
	1-26-22	.500	1-26-22	

KB KB



Calibration overdue

Location from Northeast entrance



COLORADO
Energy & Carbon Management
Commission
Department of Natural Resources

**KT Resources LLC
Ant Hill Unit 19-12
Location ID: 316339**



Location from the West



Location from Southeast corner