



00516215

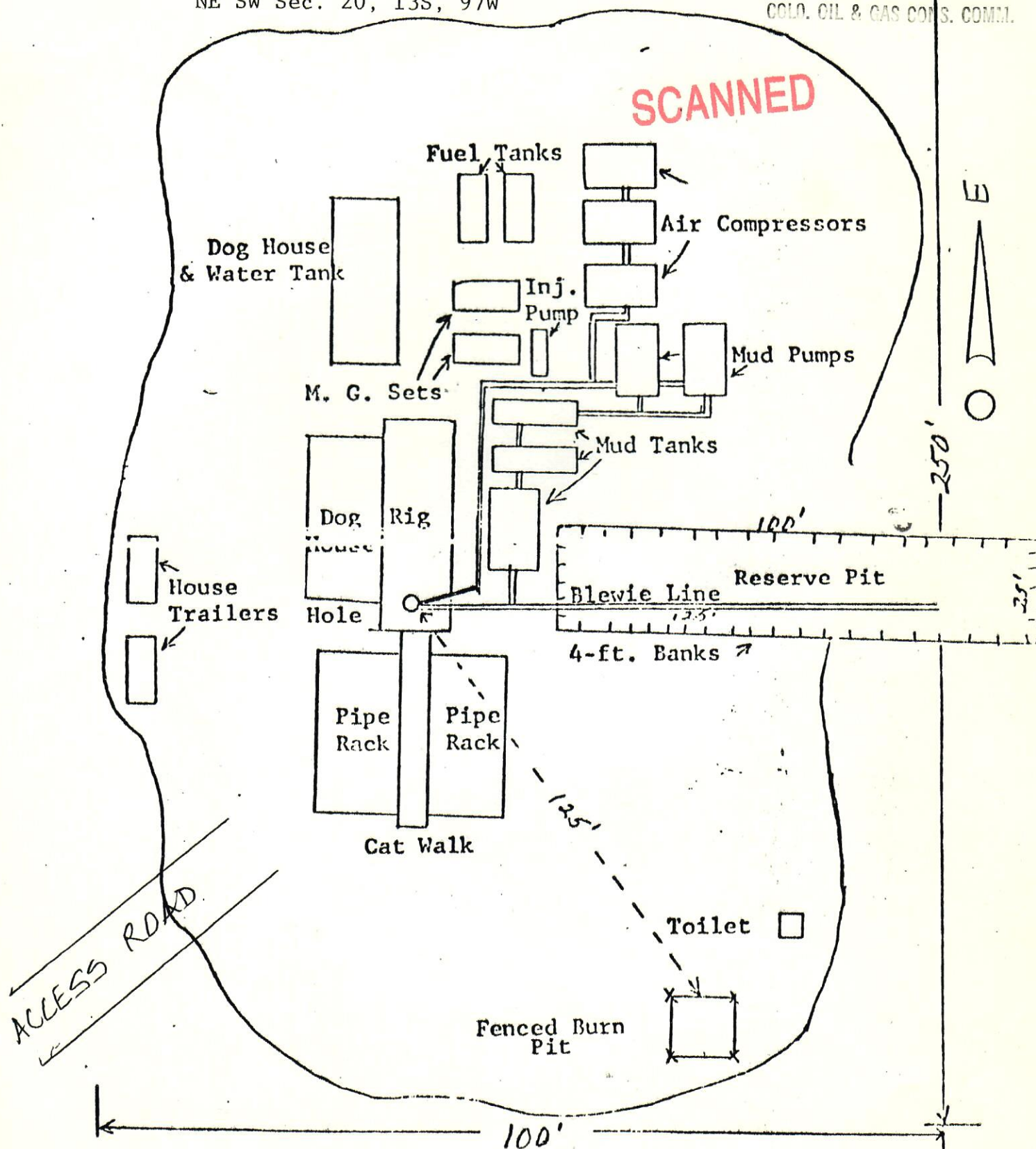
COLORADO-PACIFIC PETROLEUM CORPORATION

RECEIVED

SEP 14 1979

Well Name & Lease No. Kannah Creek Grazing Assoc. #1
NE SW Sec. 20, 13S, 97W

COLORADO OIL & GAS COMMISSION



Scale: 1 in. = approx. 30 ft.